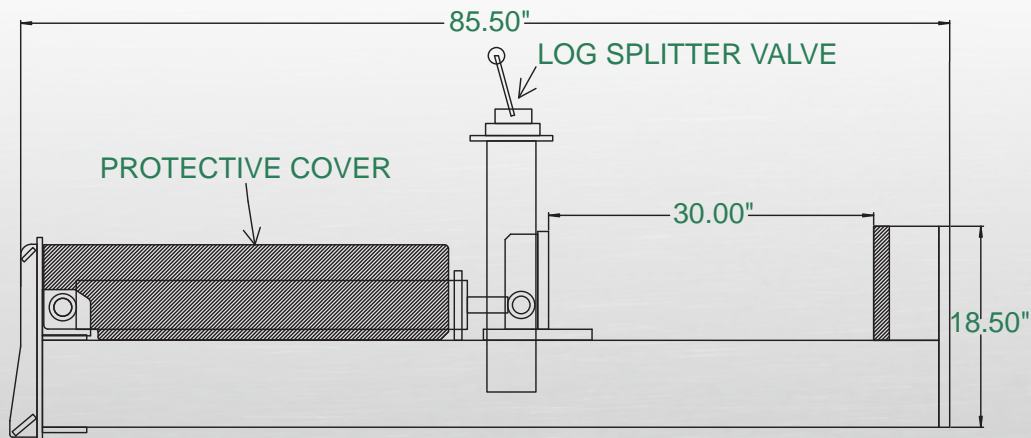


This log splitter is operated from the outside of the skid steer. Set your parking brake, raise the engine speed to  $\frac{3}{4}$ , engage the auxiliary hydraulics and the splitter is ready to go. Simply use the valve mounted on the splitter to operate the cylinder.

- Standard 20 ton 4" x 30" cylinder
- Optional 30 ton 5" x 30" cylinder
- 10" I beam

## Conventional Log Splitter Specs



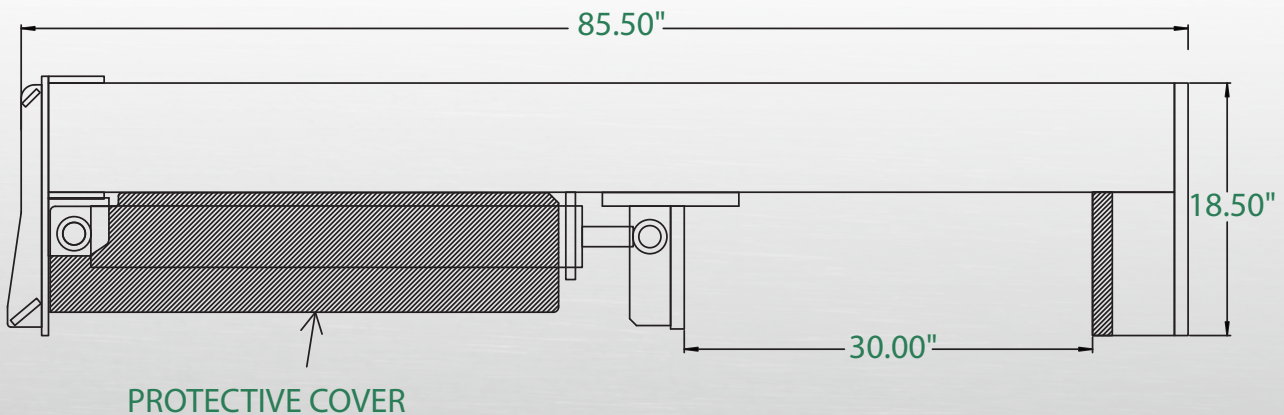
# Inverted Log Splitter



This log splitter is operated from inside your cab. Simply maneuver the splitter over the log and activate the auxiliary hydraulics to split the log. Logs can also be picked up and placed with this splitter.

- Standard 20 ton 4" x 30" cylinder
- Optional 30 ton 5" x 30" cylinder
- 10" I beam

## Inverted Log Splitter Specs



# Horizontal Log Splitter

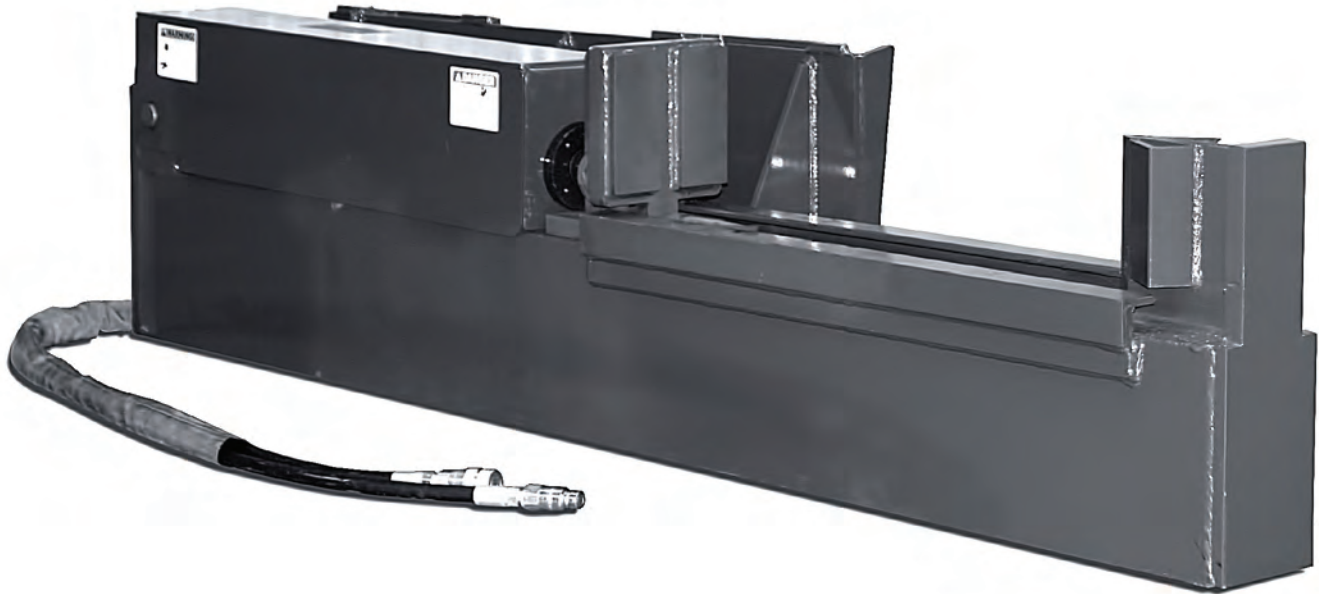


Image shown upside down.

This log splitter is operated from inside your cab. Simply maneuver the splitter over the log and activate the auxiliary hydraulics to split the log. Logs can also be picked up and placed with this splitter.

- Standard 20 ton 4" x 30" cylinder
- Optional 30 ton 5" x 30" cylinder
- 10" I beam

## Horizontal Log Splitter Specs

