



## 655 ROCK TRENCHER

For Skid Steers



Paladin Attachments is your single source for high quality attachments for skid steers, compact tool carriers, and excavators used for material handling, soil preparation, construction, and site preparation.

When the job requires trenching through asphalt, frozen ground, fracturable rock, or extremely compacted soils, the Bradco 655 Rock Trencher, by Paladin will handle the conditions with ease.



- Mount to skid-steer loaders
- Does not require a dedicated power unit
- Heavy duty crumpler & safety bar
- High flow
- 30" boom and 8" cutting width
- Tooth every station rock chain
- 1 year limited warranty

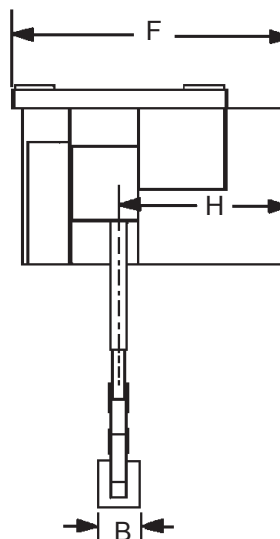
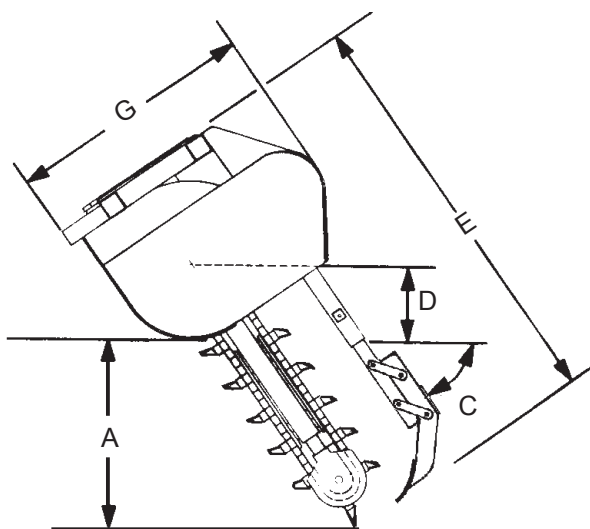


## 655 ROCK TRENCHER

Skid steers with high-flow hydraulics (22 to 43 gpm) can use the Bradco 655 Rock Trencher to cut a 30-in.-deep trench.

Specifications	655 Trencher 30" Boom
A. Trench depth with auger at 65° digging angle	30"
B. Chain widths	8"
C. Recommended trenching angle	65°
D. Headshaft height (auger touching ground)	11.25"
E. Length (overall)	58"
F. Width (overall)	43"
G. Height (overall)	37"
H. Spoil discharge reach	27"
Hydraulic Motor	35 cu. in. displacement
<b>Hydraulic System</b>	
GPM requirements	min 22 / max 42
Max operating pressure psi	3500

- 2" pitch, 43,000 lb. anti-back flex chain for maximum performance and life
- Double standard chain for tooth pattern versatility
- Heavy duty chain reduction drive system amplifies torque to cutting chain
- High torque hydraulic motor for maximum digging power
- Low profile dirt shield for better operator visibility
- Built-in skid shoe to provide positive depth control for auger
- Pivoting crumber shoe to assist with loose soil removal



Subject to change without notice.

*When work needs to get done you need to be able to depend on your equipment.  
Our material handling attachments are designed for maximum reliability,  
durability, and productivity.*