

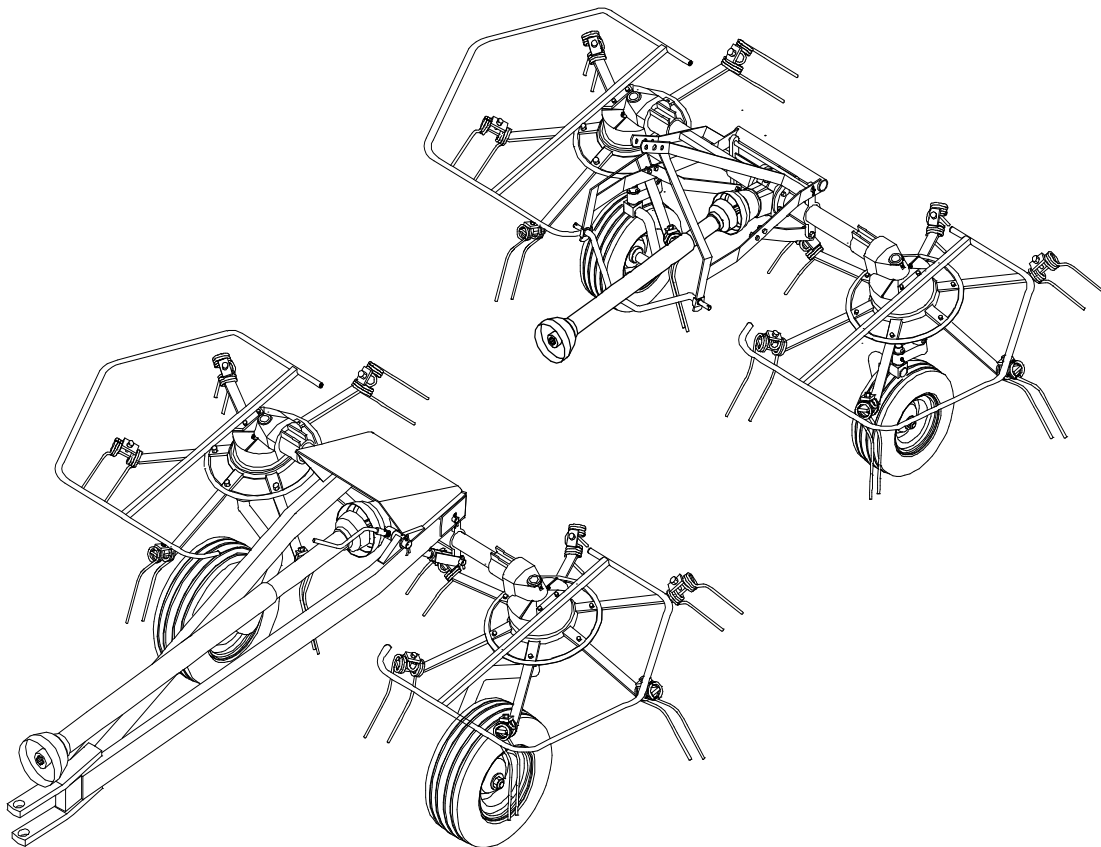
AGRICULTURAL MACHINERY

sitrex®
Spa

ASSEMBLY, USE AND MAINTENANCE SPARE PARTS LIST

2G-252 2GL-302

PULL TYPE AND 3rd POINT HITCH



ROTARY TEDDER

09/06

SPARE PARTS LIST

FOR CORRECT SPARE PARTS ORDER IT IS NECESSARY TO SPECIFY:
TABLE NUMBER, ITEM, PART NO, DESCRIPTION AND QUANTITY OF
PARTS REQUIRED.

ITEMS DESCRIBED AS RH AND LH ARE MEANT FACING REAR OF
MACHINE.

2G-2GL 3rd POINT HITCH

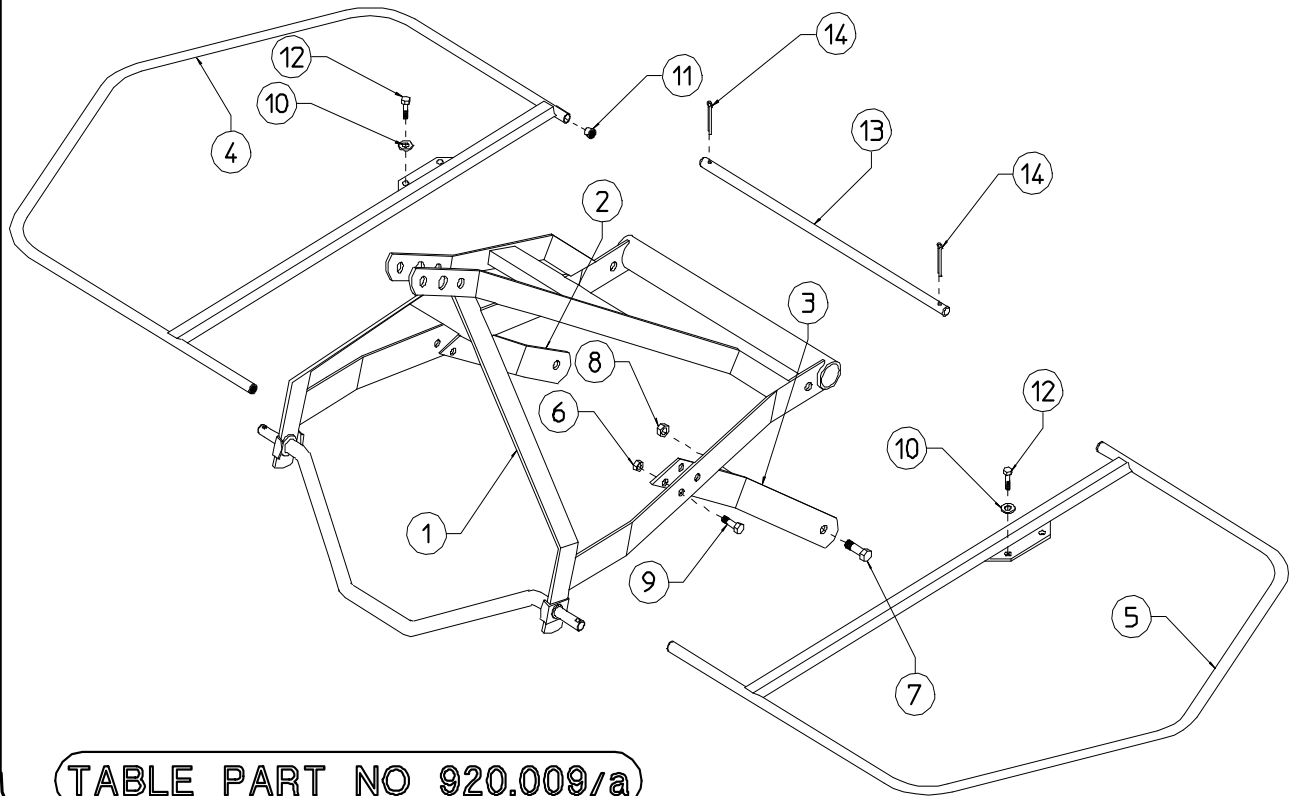


TABLE PART NO 920.009/a

2G-2GL PULL TYPE

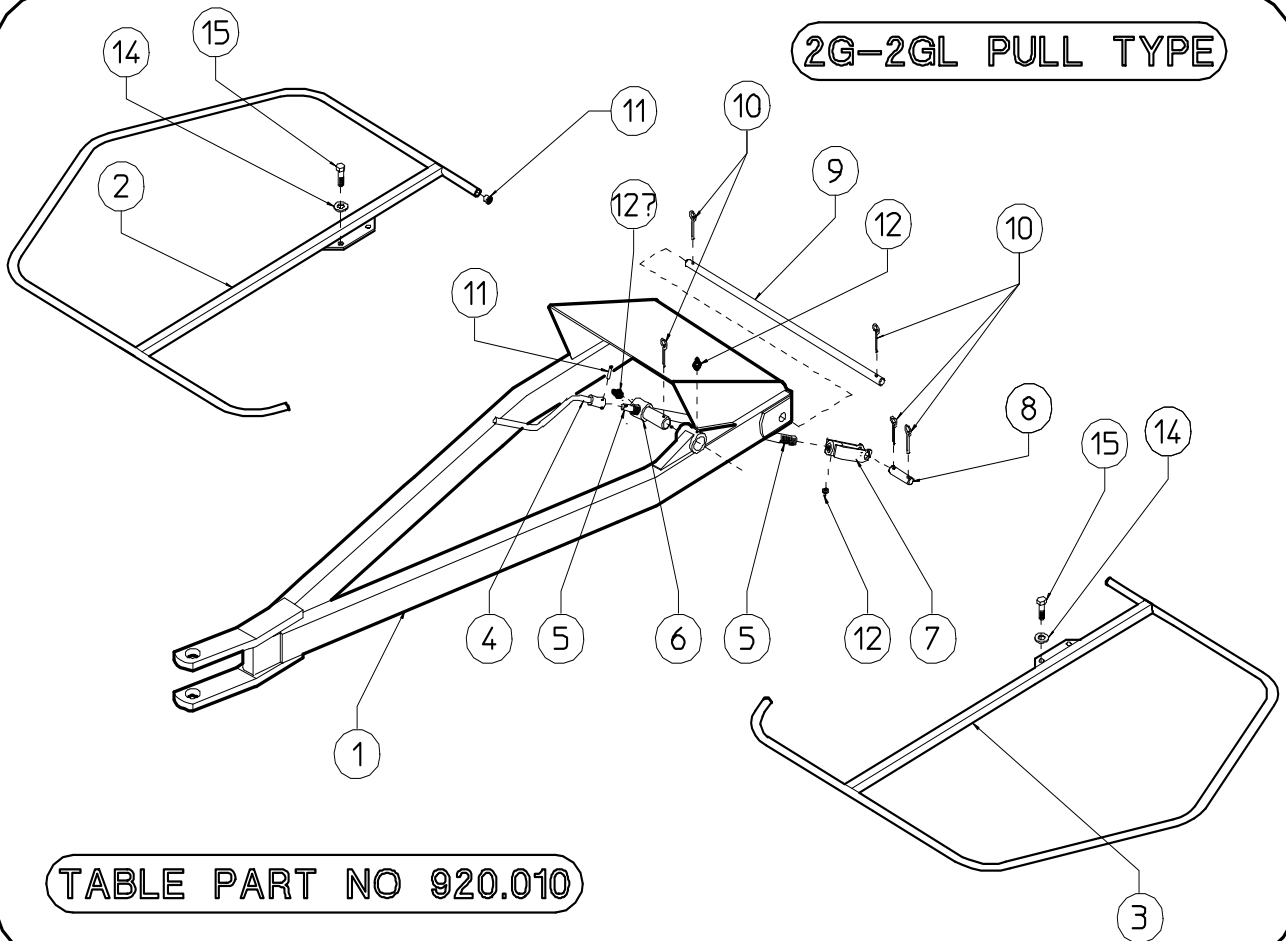


TABLE PART NO 920.010

2G-2GL - TABLE PART NO 920.009/a - 3rd POINT HITCH

| ITEM | Q.ty | PART NO | DESCRIPTION | NOTE |
|------|------|---------|-----------------------|------|
| 1 | 1 | 200.421 | 3rd POINT HITCH | |
| 2 | 1 | 200.427 | RH TIE ROD | |
| 3 | 1 | 200.424 | LH TIE ROD | |
| 4 | 1 | 210.072 | RH LATERAL GUARD | |
| 5 | 1 | 210.073 | LH LATERAL GUARD | |
| 6 | 4 | 600.077 | NUT (M12) | |
| 7 | 2 | 600.578 | SCREW (M18x50) | |
| 8 | 2 | 600.240 | NUT (M18) | |
| 9 | 4 | 600.443 | SCREW (M12x40) | |
| 10 | 4 | 600.634 | SPRING WASHER (ø12,5) | |
| 11 | 4 | 600.854 | PLUG | |
| 12 | 2 | 600.441 | SCREW (M12x25) | |
| 13 | 1 | 200.430 | PIN | |
| 14 | 2 | 600.112 | SPLIT PIN (ø4x30) | |

2G-2GL - TABLE PART NO 920.010 - PULL TYPE

| ITEM | Q.ty | PART NO | DESCRIPTION | NOTE |
|------|------|---------|-----------------------|------|
| 1 | 1 | 210.083 | DRAWBAR | |
| 2 | 1 | 210.072 | RH LATERAL GUARD | |
| 3 | 1 | 210.073 | LH LATERAL GUARD | |
| 4 | 1 | 200.438 | HANDLE | |
| 5 | 1 | 200.440 | TIE ROD | |
| 6 | 1 | 200.439 | PIN | |
| 7 | 1 | 200.441 | FORK | |
| 8 | 1 | 200.442 | PIN | |
| 9 | 1 | 210.082 | PIN | |
| 10 | 5 | 600.112 | SPLIT PIN (ø4x30) | |
| 11 | 1 | 600.580 | SPRING PIN (ø6x26) | |
| 12 | 2 | 600.124 | GREASE NIPPLE (M6) | |
| 13 | 4 | 600.854 | PLUG | |
| 14 | 4 | 600.634 | SPRING WASHER (ø12,5) | |
| 15 | 4 | 600.441 | SCREW (M12x25) | |

2G - 2GL

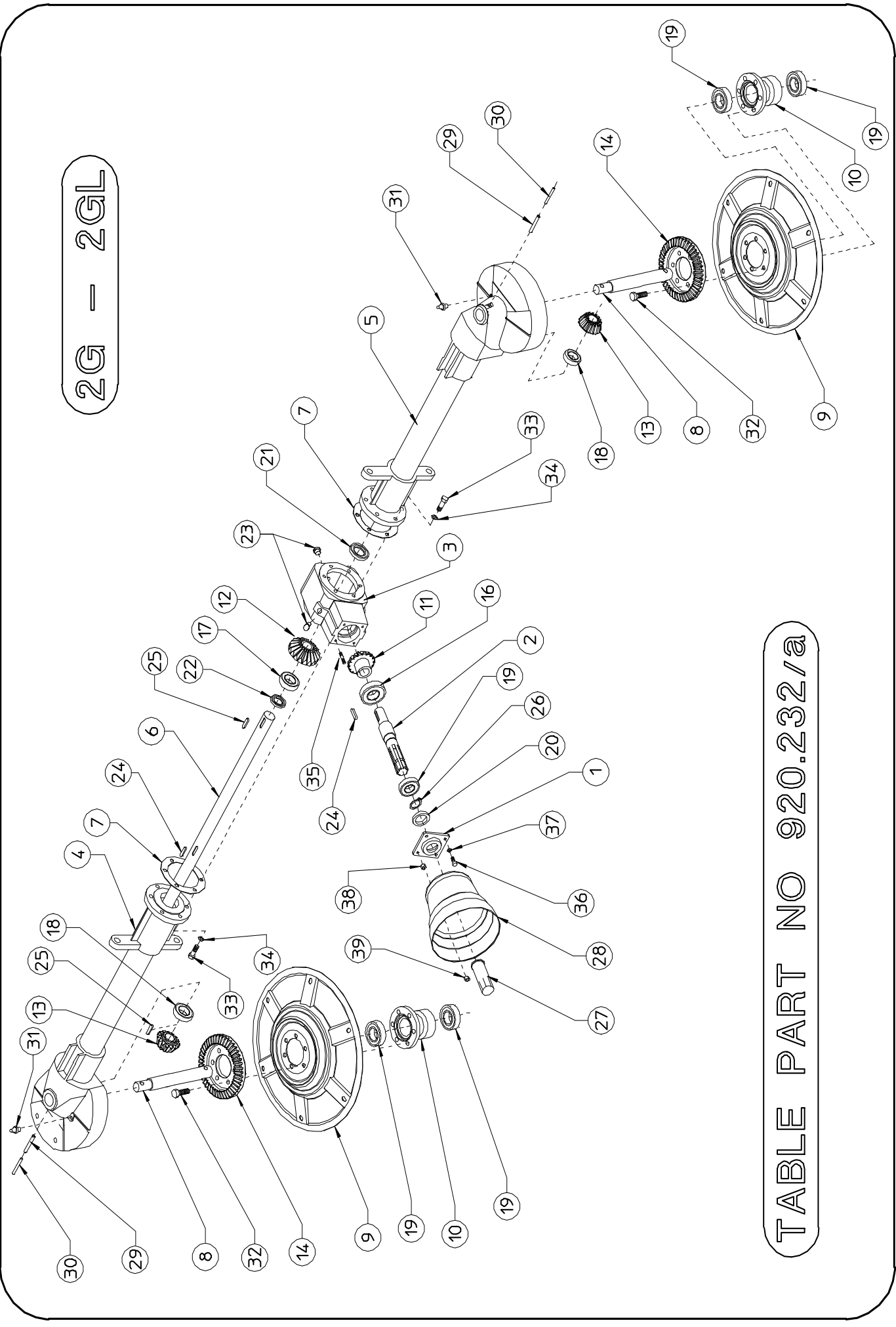


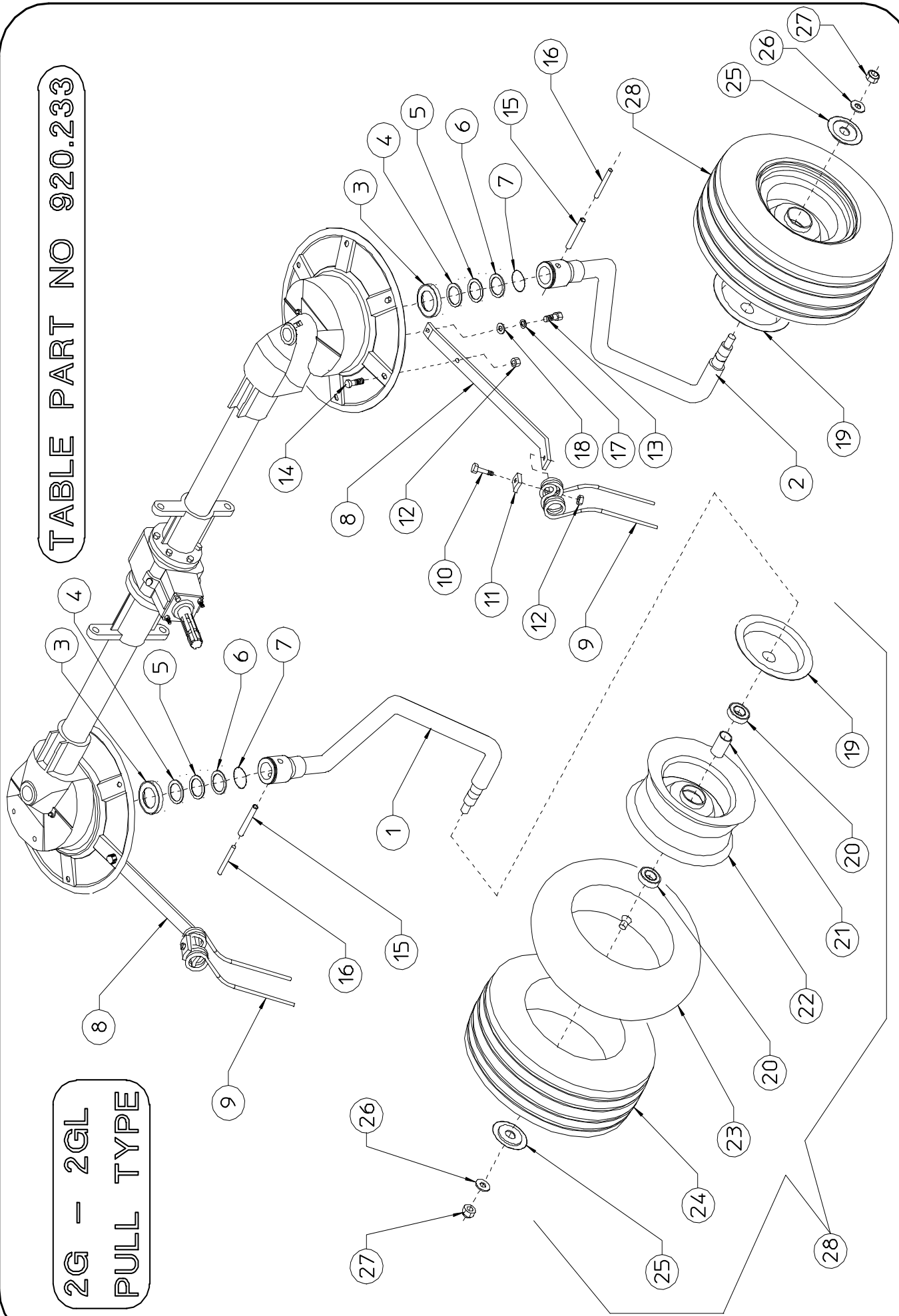
TABLE PART NO 920.232/a

2G - 2GL - TABLE PART NO 920.232/a

| ITEM | Q.ty | PART NO | PART NO | DESCRIPTION | NOTE |
|------|------|---------|---------|--------------------------|------|
| | | 2G | 2GL | | |
| 1 | 1 | 200.395 | 200.395 | GEARBOX CAP | |
| 2 | 1 | 200.396 | 200.396 | SHAFT | |
| 3 | 1 | 230.225 | 230.225 | GEARBOX | |
| 4 | 1 | 200.393 | 200.394 | RH CENTER AXLE | |
| 5 | 1 | 200.391 | 200.392 | LH CENTER AXLE | |
| 6 | 1 | 200.398 | 200.399 | DRIVE SHAFT | |
| 7 | 2 | 200.405 | 200.405 | GASKET | |
| 8 | 2 | 200.407 | 200.407 | PIN | |
| 9 | 2 | 220.820 | 220.834 | TINE DISC | |
| 10 | 2 | 220.836 | 220.836 | HUB | |
| 11 | 1 | 200.397 | 200.397 | PINION | |
| 12 | 1 | 200.400 | 200.400 | CROWN | |
| 13 | 2 | 200.464 | 200.420 | PINION | |
| 14 | 2 | 220.774 | 220.833 | CROWN | |
| 16 | 1 | 600.827 | 600.827 | BEARING (6209 2RS) | |
| 17 | 1 | 600.579 | 600.579 | BEARING (6206) | |
| 18 | 2 | 600.609 | 600.609 | BEARING (6206 2RS) | |
| 19 | 5 | 600.608 | 600.608 | BEARING (6207 2RS) | |
| 20 | 1 | 600.555 | 600.555 | OIL RETAINER (ø35/52x10) | |
| 21 | 1 | 600.561 | 600.561 | OIL RETAINER (ø30/62x10) | |
| 22 | 1 | 600.582 | 600.582 | OIL RETAINER (ø30/56x10) | |
| 23 | 2 | 600.560 | 600.560 | PLUG (3/8") | |
| 24 | 2 | 600.556 | 600.556 | FLAT KEY (B8x7x40-6604) | |
| 25 | 2 | 600.559 | 600.559 | FLAT KEY (B8x7x30-6604) | |
| 26 | 1 | 600.333 | 600.333 | SNAP RING (E35-7435) | |
| 27 | 1 | 600.172 | 600.172 | SHAFT GUARD | |
| 28 | 1 | 600.681 | 600.681 | HOOD | |
| 29 | 2 | 600.541 | 600.541 | SPRING PIN (ø10x55-6873) | |
| 30 | 2 | 600.562 | 600.562 | SPRING PIN (ø6x55-6873) | |
| 31 | 2 | 600.247 | 600.247 | GREASE NIPPLE (M10) | |
| 32 | 12 | 600.004 | 600.004 | SCREW (M12x30-5739) | |
| 33 | 12 | 600.615 | 600.615 | SCREW (M12x35-5739) | |
| 34 | 12 | 600.049 | 600.049 | SPRING WASHER (ø13) | |
| 35 | 2 | 600.558 | 600.558 | BOLT (M8x30-5911) | |
| 36 | 2 | 600.222 | 600.222 | SCREW (M8x20-5739) | |
| 37 | 2 | 600.228 | 600.228 | SPRING WASHER (ø8,4) | |
| 38 | 2 | 600.552 | 600.552 | NUT (M8-5587) | |
| 39 | 2 | 600.037 | 600.037 | NUT (M8-5588) | |

TABLE PART NO 920.233

2G - 2GL
PULL TYPE

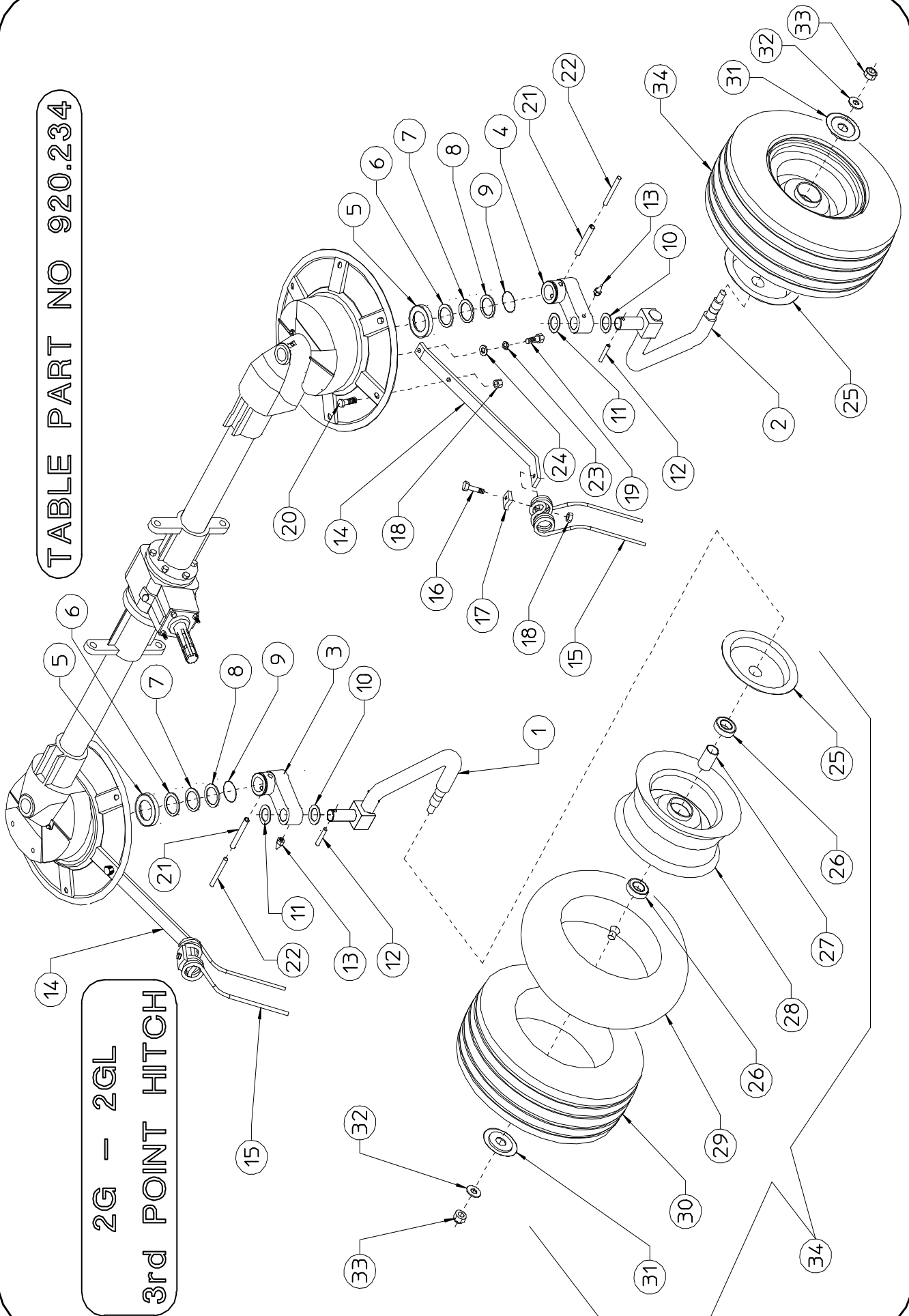


2G - 2GL - TABLE 920.233 - PULL TYPE VERSION

| ITEM | Q.ty | PART NO 2G | PART NO 2GL | DESCRIPTION | NOTE |
|------|------|---------------|----------------|----------------------------|-------------------|
| 1 | 1 | 210.590 | 210.590 | RH LATERAL SUPPORT | |
| 2 | 1 | 210.591 | 210.591 | LH LATERAL SUPPORT | |
| 3 | 2 | 220.821 | 220.970 | SPACER | |
| 4 | 2 | 200.419 | 200.419 | SHIM (ø35,2/51,8x1) | *Q.ty as required |
| 5 | 2 | 200.274 | 200.274 | SHIM (ø35,2/48x0,5) | *Q.ty as required |
| 6 | 2 | 200.490 | 200.490 | SHIM (ø35,2/51,8x0,3) | *Q.ty as required |
| 7 | 2 | 600.568 | 600.568 | GASKET (OR 47,63x3,53) | |
| 8 | 12 | 220.819 | 220.835 | ARM | |
| 9 | 12 | 210.574 | 210.574 | TINE | |
| 10 | 12 | 600.688 | 600.688 | SCREW (M12x45-5737 ZN) | |
| 11 | 12 | 200.402 | 200.402 | PLATE | |
| 12 | 24 | 600.077 | 600.077 | NUT (M12-DIN 980) | |
| 13 | 12 | 610.962 | 610.962 | SCREW (M12x30-5739 ZN) | |
| 14 | 12 | 600.616 | 600.616 | SCREW (M12x35-5739 ZN) | |
| 15 | 2 | 600.541 | 600.541 | SPRING PIN (ø10x55-6873) | |
| 16 | 2 | 600.562 | 600.562 | SPRING PIN (ø6x55-6873) | |
| 17 | 12 | 600.018 | 600.018 | SPRING WASHER (ø13 ZN) | |
| 18 | 12 | 220.864 | 220.864 | WASHER (ø12,3/28,5x3) | |
| 19 | 2 | 210.596 | 210.596 | DUST COVER, INNER | |
| 20 | 4 | 600.602 | 600.602 | BEARING (6205 2RS) | |
| 21 | 2 | 200.415 | 200.415 | SPACER | |
| 22 | 2 | 610.273 | 610.273 | RIM | |
| 23 | 2 | 610.274 | 610.274 | TUBE | |
| 24 | 2 | 610.275 | 610.275 | TIRE | |
| 25 | 2 | 200.416 | 200.416 | DUST COVER, OUTER | |
| 26 | 2 | 600.031 | 600.031 | WASHER (ø17 ZN) | |
| 27 | 2 | 600.080 | 600.080 | NUT (M16-DIN 980) | |
| 28 | 2 | 610.272 | 610.272 | TIRE ASSY (16x6,50-8 6PLY) | |

TABLE PART NO 920.234

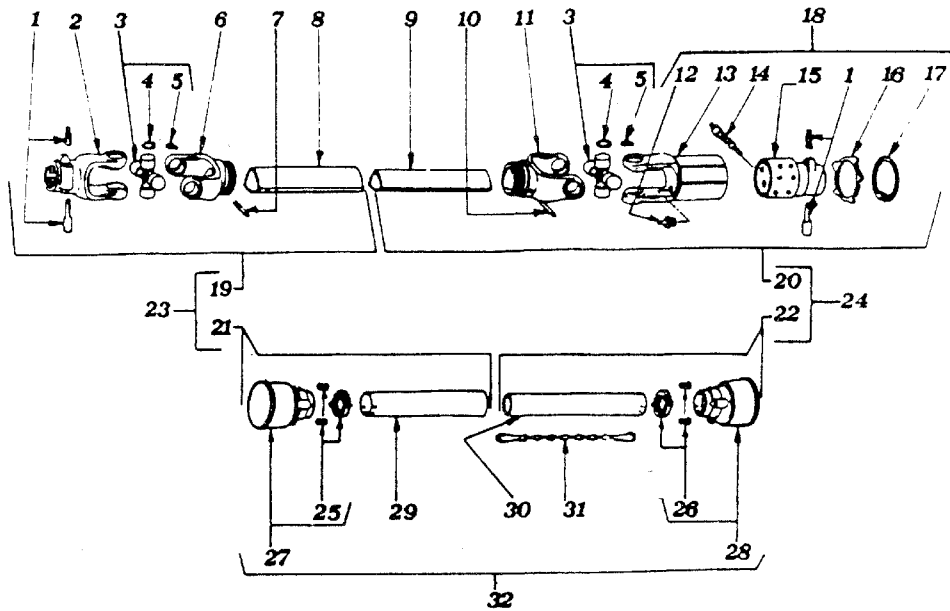
2G - 2GL
3rd POINT HITCH



2G - 2GL - TABLE 920.234 - 3rd POINT HITCH

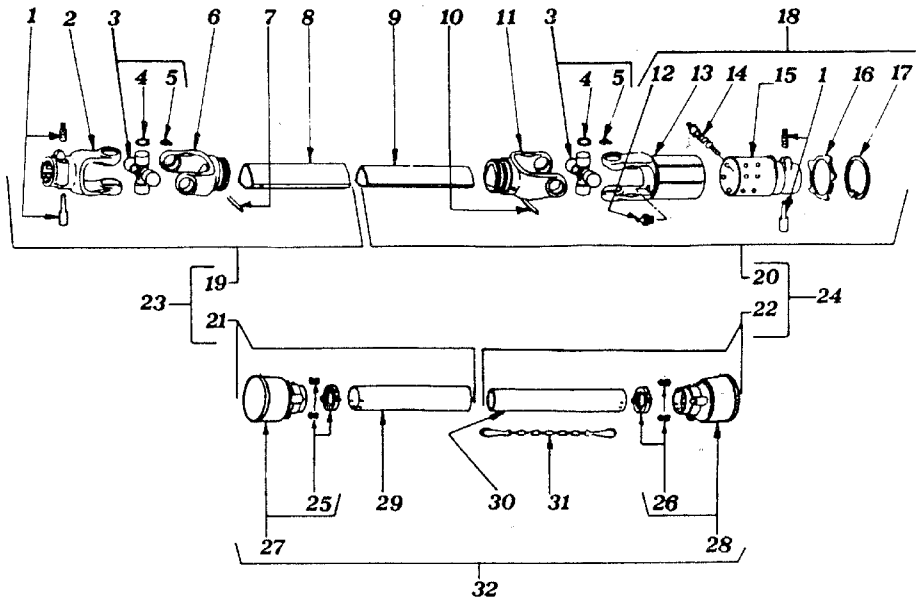
| ITEM | Q.ty | PART NO | PART NO | DESCRIPTION | NOTE |
|------|------|---------|---------|----------------------------|-------------------|
| | | 2G | 2GL | | |
| 1 | 1 | 230.231 | 230.231 | RH SUPPORT | |
| 2 | 1 | 230.232 | 230.232 | LH SUPPORT | |
| 3 | 1 | 200.467 | 200.467 | RH SUPPORT | |
| 4 | 1 | 200.468 | 200.468 | LH SUPPORT | |
| 5 | 2 | 220.821 | 220.970 | SPACER | |
| 6 | 2 | 200.419 | 200.419 | SHIM (ø35,2/51,8x1) | *Q.ty as required |
| 7 | 2 | 200.274 | 200.274 | SHIM (ø35,2/48x0,5) | *Q.ty as required |
| 8 | 2 | 200.490 | 200.490 | SHIM (ø35,2/51,8x0,3) | *Q.ty as required |
| 9 | 2 | 600.568 | 600.568 | GASKET (OR 47,63x3,53) | |
| 10 | 2 | 200.273 | 200.273 | SHIM (ø30,3/39,8x1) | *Q.ty as required |
| 11 | 2 | 200.272 | 200.272 | SHIM (ø30,3/39,8x0,5) | *Q.ty as required |
| 12 | 2 | 600.539 | 600.539 | SPRING PIN (ø6x45-6873) | |
| 13 | 2 | 600.124 | 600.124 | GREASE NIPPLE (M6) | |
| 14 | 12 | 220.819 | 220.835 | ARM | |
| 15 | 12 | 210.574 | 210.574 | TINE | |
| 16 | 12 | 600.688 | 600.688 | SCREW (M12x45-5737 ZN) | |
| 17 | 12 | 200.402 | 200.402 | PLATE | |
| 18 | 24 | 600.077 | 600.077 | NUT (M12-DIN 980) | |
| 19 | 12 | 610.962 | 610.962 | SCREW (M12x30-5739 ZN) | |
| 20 | 12 | 600.616 | 600.616 | SCREW (M12x35-5739 ZN) | |
| 21 | 2 | 600.541 | 600.541 | SPRING PIN (ø10x55-6873) | |
| 22 | 2 | 600.562 | 600.562 | SPRING PIN (ø6x55-6873) | |
| 23 | 12 | 600.018 | 600.018 | SPRING WASHER (ø13 ZN) | |
| 24 | 12 | 220.864 | 220.864 | WASHER (ø12,3/28,5x3) | |
| 25 | 2 | 210.596 | 210.596 | DUST COVER, INNER | |
| 26 | 4 | 600.602 | 600.602 | BEARING (6205 2RS) | |
| 27 | 2 | 200.415 | 200.415 | SPACER | |
| 28 | 2 | 610.273 | 610.273 | RIM | |
| 29 | 2 | 610.274 | 610.274 | TUBE | |
| 30 | 2 | 610.275 | 610.275 | TIRE | |
| 31 | 2 | 200.416 | 200.416 | DUST COVER, OUTER | |
| 32 | 2 | 600.031 | 600.031 | WASHER (ø17 ZN) | |
| 33 | 2 | 600.080 | 600.080 | NUT (M16-DIN 980) | |
| 34 | 2 | 610.272 | 610.272 | TIRE ASSY (16x6,50-8 6PLY) | |

CARDAN SHAFT B2 130 E + LW2
 PART NO.600.680
 2G/2GL PULL TYPE

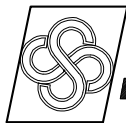


| CARDAN SHAFT 600.680 | | | | |
|----------------------|---------|------|----------------------------|------|
| ITEM | PART NO | Q.ty | DESCRIPTION | NOTE |
| 1 | 610.057 | 2 | COMPLETE PUSH BUTTON | |
| 2 | 610.051 | 1 | YOKE | |
| 3 | 610.052 | 2 | CROSS JOURNAL ASS. | |
| 4 | 610.248 | 8 | CIRCLIP | |
| 5 | 610.206 | 2 | GREASE NIPPLE | |
| 6 | 610.249 | 1 | OUTER TUBE YOKE | |
| 7 | 610.211 | 1 | FLEXIBLE PIN | |
| 8 | 610.210 | 1 | CM. CARDAN TUBE | |
| 9 | 610.123 | 1 | CM. CARDAN TUBE | |
| 10 | 600.027 | 1 | FLEXIBLE PIN | |
| 11 | 610.250 | 1 | INNER TUBE YOKE | |
| 12 | 610.216 | 1 | GREASE NIPPLE | |
| 13 | 610.251 | 1 | OUTER CASING WITH YOKE | |
| 14 | 610.218 | 16 | RATCHET TOOTH | |
| 15 | 610.252 | 1 | HUB | |
| 16 | 610.220 | 1 | REATING WASHER | |
| 17 | 610.253 | 1 | CIRCLIP | |
| 18 | 610.146 | 1 | TORQUE LW2 | |
| 19 | 610.254 | 1 | HALF SHAFT (WITHOUT GUARD) | |
| 20 | 610.255 | 1 | HALF SHAFT (WITHOUT GUARD) | |
| 21 | 610.256 | 1 | HALF SAFETY GUARD | |
| 22 | 610.257 | 1 | HALF SAFETY GUARD | |
| 23 | 610.258 | 1 | HALF SHAFT (WITH GUARD) | |
| 24 | 610.259 | 1 | HALF SHAFT (WITH GUARD) | |
| 25 | 610.060 | 1 | O. BEARING | |
| 26 | 610.061 | 1 | I. BEARING | |
| 27 | 610.062 | 1 | O. BASIC CONE | |
| 28 | 610.063 | 1 | I. BASIC CONE | |
| 29 | 610.260 | 1 | CM. SAFETY TUBE | |
| 30 | 610.261 | 1 | CM. SAFETY TUBE | |
| 31 | 610.068 | 1 | CHaine | |
| 32 | 610.262 | 1 | SAFETY GUARD | |

CARDAN SHAFT B2 090 E + LW2
 PART NO.600.732
 2G/2GL 3RD POINT HITCH



| CARDAN SHAFT 600.732 | | | | |
|----------------------|---------|------|----------------------------|------|
| ITEM | PART NO | Q.ty | DESCRIPTION | NOTE |
| 1 | 610.057 | 2 | COMPLETE PUSH BUTTON | |
| 2 | 610.051 | 1 | YOKE | |
| 3 | 610.052 | 2 | CROSS JOURNAL ASS. | |
| 4 | 610.248 | 8 | CIRCLIP | |
| 5 | 610.206 | 2 | GREASE NIPPLE | |
| 6 | 610.249 | 1 | OUTER TUBE YOKE | |
| 7 | 610.211 | 1 | FLEXIBLE PIN | |
| 8 | 610.210 | 1 | CM. CARDAN TUBE | |
| 9 | 610.123 | 1 | CM. CARDAN TUBE | |
| 10 | 600.027 | 1 | FLEXIBLE PIN | |
| 11 | 610.250 | 1 | INNER TUBE YOKE | |
| 12 | 610.216 | 1 | GREASE NIPPLE | |
| 13 | 610.251 | 1 | OUTER CASING WITH YOKE | |
| 14 | 610.218 | 16 | RATCHET TOOTH | |
| 15 | 610.252 | 1 | HUB | |
| 16 | 610.220 | 1 | REATING WASHER | |
| 17 | 610.253 | 1 | CIRCLIP | |
| 18 | 610.146 | 1 | TORQUE LW2 | |
| 19 | 610.404 | 1 | HALF SHAFT (WITHOUT GUARD) | |
| 20 | 610.430 | 1 | HALF SHAFT (WITHOUT GUARD) | |
| 21 | 610.428 | 1 | HALF SAFETY GUARD | |
| 22 | 610.429 | 1 | HALF SAFETY GUARD | |
| 23 | 610.431 | 1 | HALF SHAFT (WITH GUARD) | |
| 24 | 610.432 | 1 | HALF SHAFT (WITH GUARD) | |
| 25 | 610.060 | 1 | O. BEARING | |
| 26 | 610.061 | 1 | I. BEARING | |
| 27 | 610.062 | 1 | O. BASIC CONE | |
| 28 | 610.063 | 1 | I. BASIC CONE | |
| 29 | 610.402 | 1 | CM. SAFETY TUBE | |
| 30 | 610.403 | 1 | CM. SAFETY TUBE | |
| 31 | 610.068 | 1 | CHAINE | |
| 32 | 610.069 | 1 | SAFETY GUARD | |



sitrex[®] AGRICULTURAL MACHINERY s.r.l.

Zona Industriale-Viale Grecia, 8
06018 TRESTINA-(Perugia)-ITALY
Tel. +39.075.8540021-Telefax +39.075.8540523
e-mail: sitrex@sitrex.it www.sitrex.com

