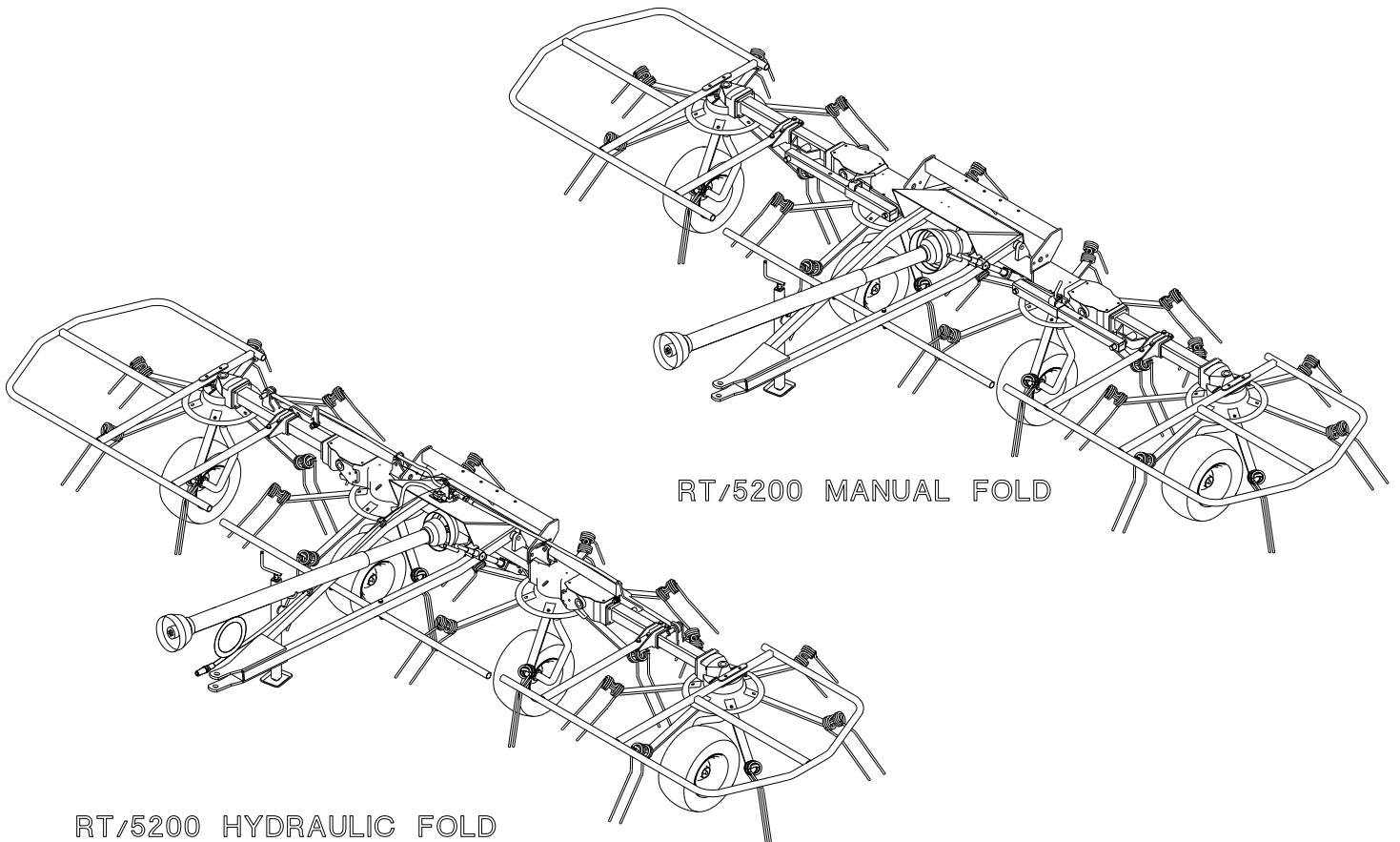


AGRICULTURAL MACHINERY

sitrex®
Spa

ASSEMBLY, USE AND MAINTENANCE SPARE PARTS LIST

RT/5200 – RT/5200 H



ROTARY TEDDER

05/16

SPARE PARTS LIST

FOR CORRECT SPARE PARTS ORDER IT IS NECESSARY TO SPECIFY:
TABLE NUMBER, ITEM, PART NO, DESCRIPTION AND QUANTITY OF
PARTS REQUIRED.

ITEMS DESCRIBED AS RH AND LH ARE MEANT FACING REAR OF
MACHINE.

TABLE 920.451

**RT/5200
SPRING LIFT VERSION**

**RT/5200
SPRING LIFT VERSION
AND
HYDRAULIC LIFT VERSION**

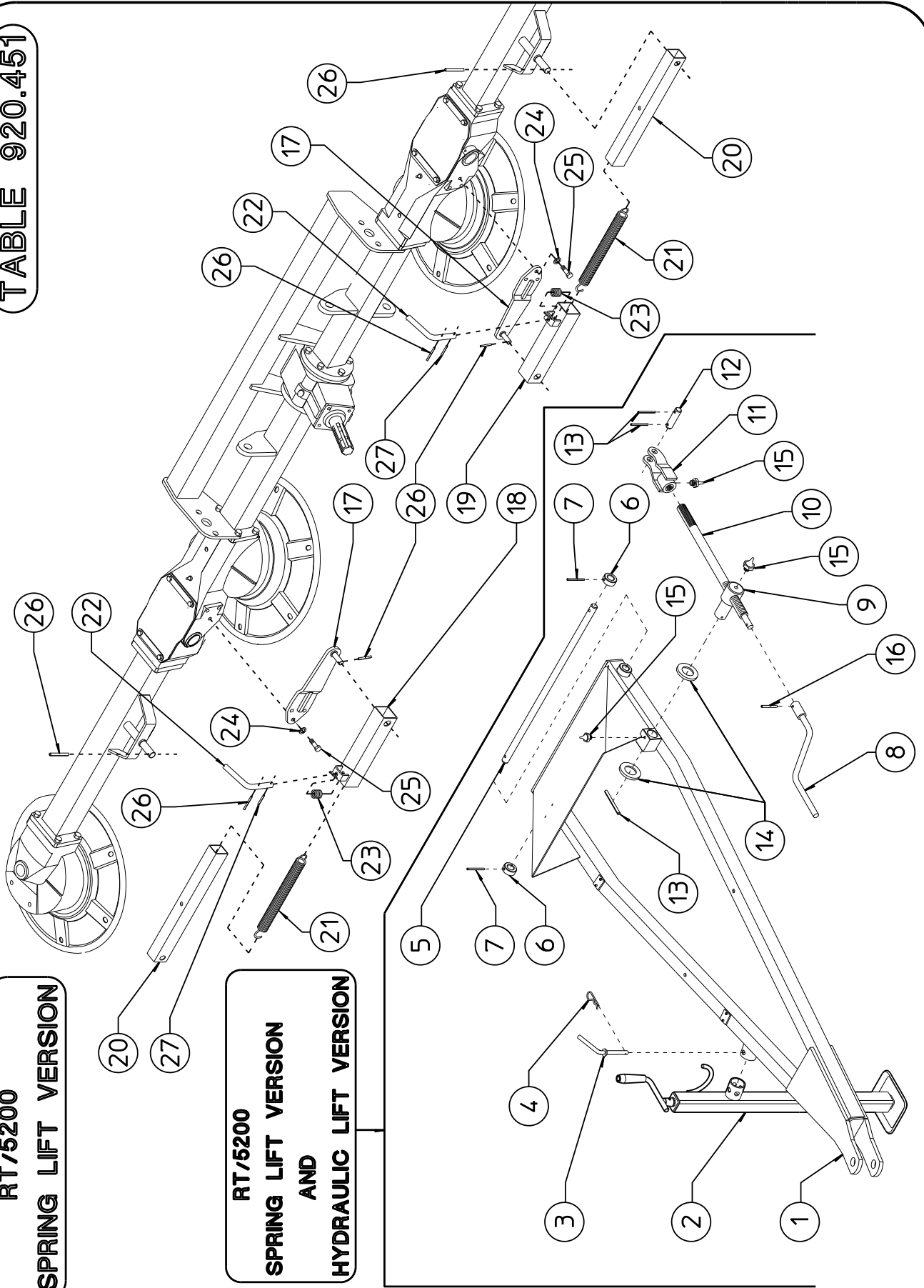


TABLE PART NO 920.451				
ITEM	PART NO	Q.ty	DESCRIPTION	NOTE
1	260.023	1	DRAWBAR (HYDRAULIC LIFT VERSION)	
1	260.209	1	DRAWBAR (SPRING LIFT VERSION)	
2	250.849	1	STAND	
3	200.959	1	PIN	
4	600.019	1	PIN	
5	250.927	1	PIN	
6	250.928	2	BUSH \varnothing 20,5-30x12	
7	600.182	2	SPRING PIN \varnothing 5x30 DIN1481	
8	200.438	1	HANDLE	
9	220.807	1	PIN	
10	200.766	1	TIE ROD M27	
11	220.808	1	FORK	
12	220.809	1	PIN	
13	600.673	3	SPRING PIN \varnothing 5x40 DIN1481	
14	200.273	2	SHIM \varnothing 30,3-39,8x1	
15	600.124	3	GREASE NIPPLE M6	
16	600.773	1	SPRING PIN \varnothing 6x30 DIN1481	
17	200.927	2	SPRING HITCH	
18	220.777	1	OUTER RH PIPER	
19	220.778	1	OUTER LH PIPER	
20	220.776	2	INNER PIPER	
21	200.772	2	SPRING	
22	200.932	2	PIN	
23	200.280	2	SPRING	
24	600.049	6	SPRING WASHER (\varnothing 13)	
25	600.615	6	SCREW M12x35 UNI 5739	
26	600.539	6	SPRING PIN \varnothing 6x45	
27	600.580	2	SPRING PIN \varnothing 6x26	

TABLE 920.452

RT/5200-H
HYDRAULIC LIFT VERSION

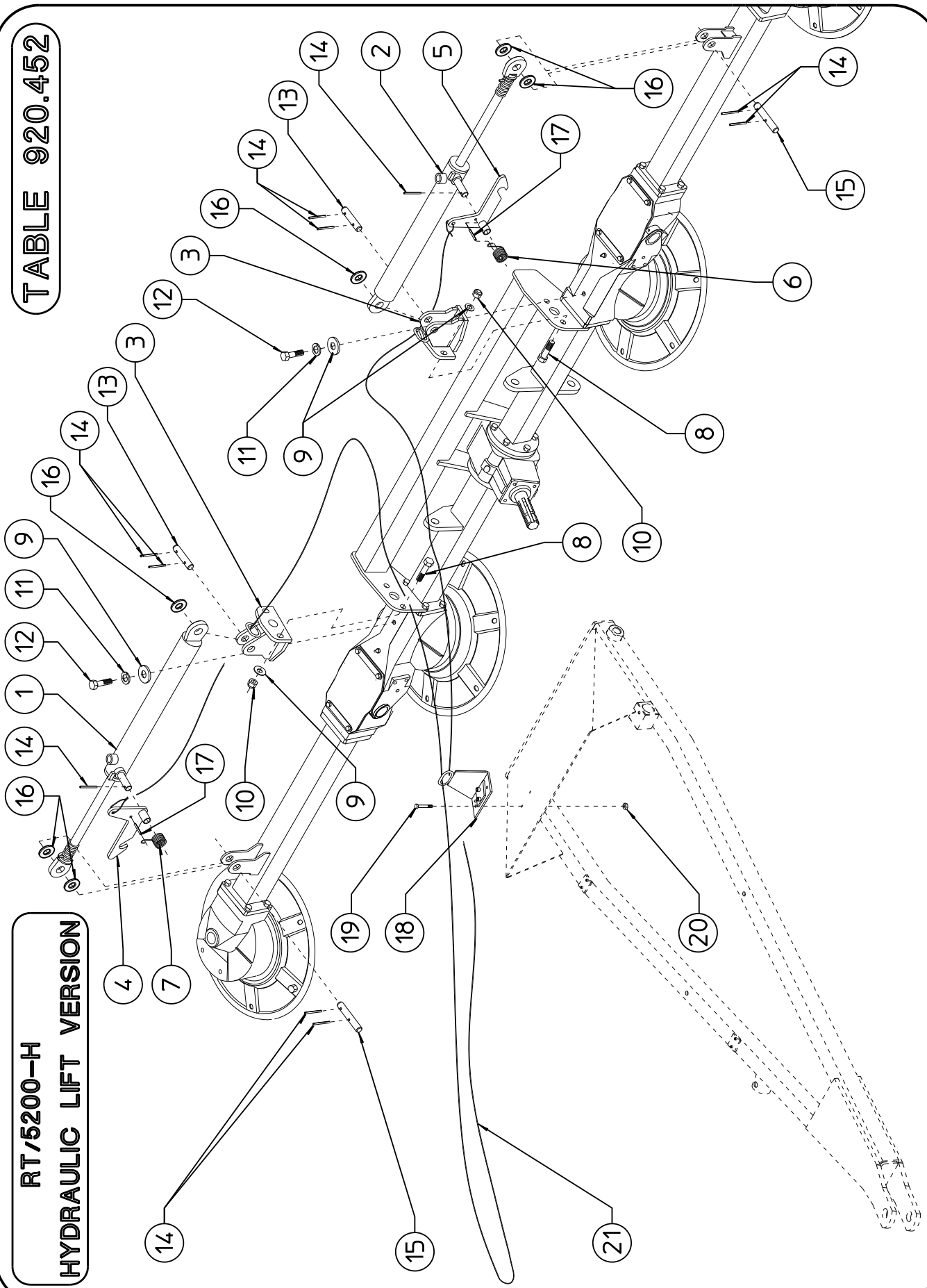


TABLE PART NO 920.452				
ITEM	PART NO	Q.ty	DESCRIPTION	NOTE
1	220.822	1	RH CYLINDER	
2	220.823	1	LH CYLINDER	
3	220.825	2	CYLINDER SUPPORT	
4	210.098	1	RH HOOK	
5	210.099	1	LH HOOK	
6	210.093	1	RH SPRING	
7	210.094	1	LH SPRING	
8	620.301	4	SCREW M12x35 DIN 933 10.9	
9	600.089	6	WASHER \varnothing 13 DIN 125A	
10	600.077	4	NUT M12 DIN 980 KL8	
11	600.018	2	SPRING WASHER \varnothing 13 similar to DIN 127B	
12	640.125	2	SCREW M12x25 DIN 933 10.9	
13	220.828	2	PIN	
14	600.538	10	SPRING PIN \varnothing 6x35 DIN 1481	
15	210.103	2	PIN	
16	230.018	4	SPACER \varnothing 20,5-40x6	
17	600.773	2	SPRING PIN \varnothing 6x30 DIN 1481	
18	220.826	1	HOSE SUPPORT	
19	630.003	2	SCREW M6x20 DIN 933 8.8	
20	600.472	2	NUT M6 DIN 980 KL8	
21	210.009	1	ROPE	

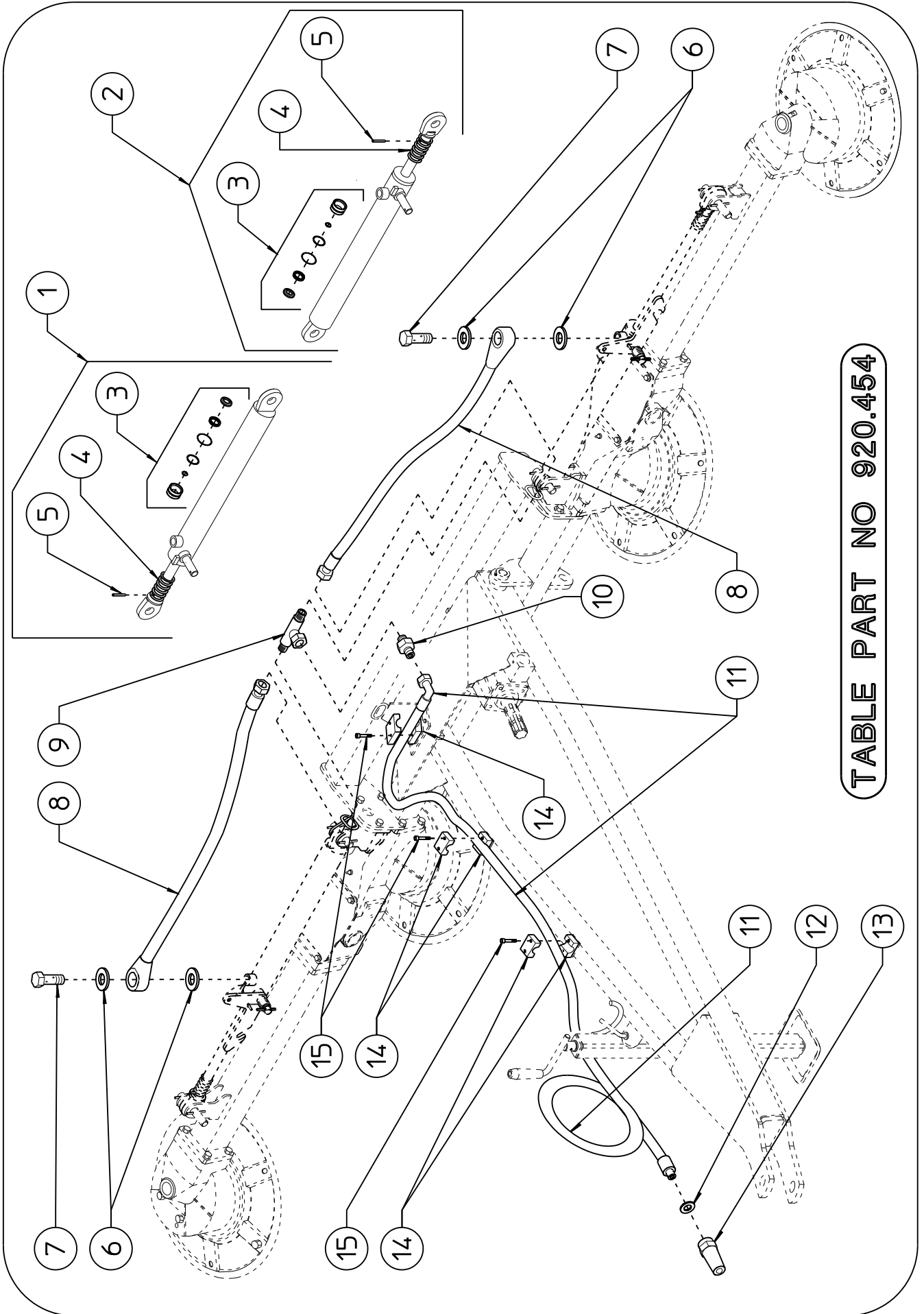


TABLE PART NO 920.454

TABLE PART NO 920.454 - HYDRAULIC KIT				
ITEM	Q.ty	PART NO	DESCRIPTION	NOTE
1	1	220.822	RH CYLINDER, COMPLETE	
2	1	220.823	LH CYLINDER, COMPLETE	
3	2	600.895	SET OF GASKET	
4	2	200.947	SPRING	
5	2	600.106	SPRING PIN \varnothing 3,5x18 DIN 1481	
6	4	630.376	WASHER \varnothing 1/4"	
7	2	600.820	SCREW 1/4"	
8	2	620.239	HOSE 1/4" L.1020mm - 40,2"	
9	1	600.880	"T" FITTING 1/4" MALE-FEMALE-MALE	
10	1	600.883	NIPPLE 1/4" - 3/8"	
11	1	620.240	HOSE 3/8" L.2900mm - 114"	
12	1	630.048	WASHER \varnothing 1/2"	
13	1	600.273	QUICK COUPLER 1/2"	
14	6	610.035	HALF HOSE COLLAR \varnothing 18	
15	6	610.037	SCREW M6x25 DIN 912 8.8	

RT/5200
 SPRING LIFT VERSION
 RT/5200
 HYDRAULIC LIFT VERSION

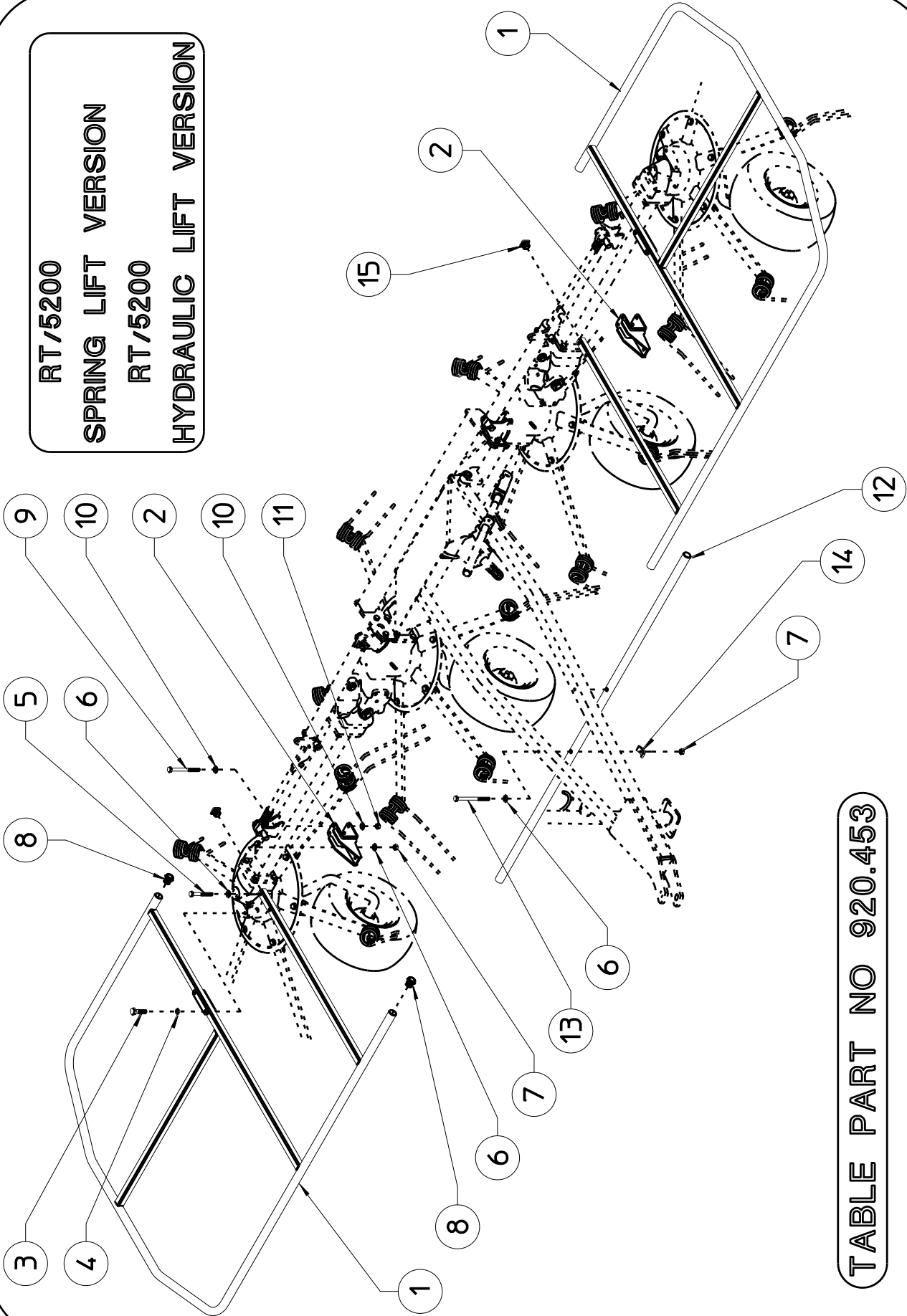
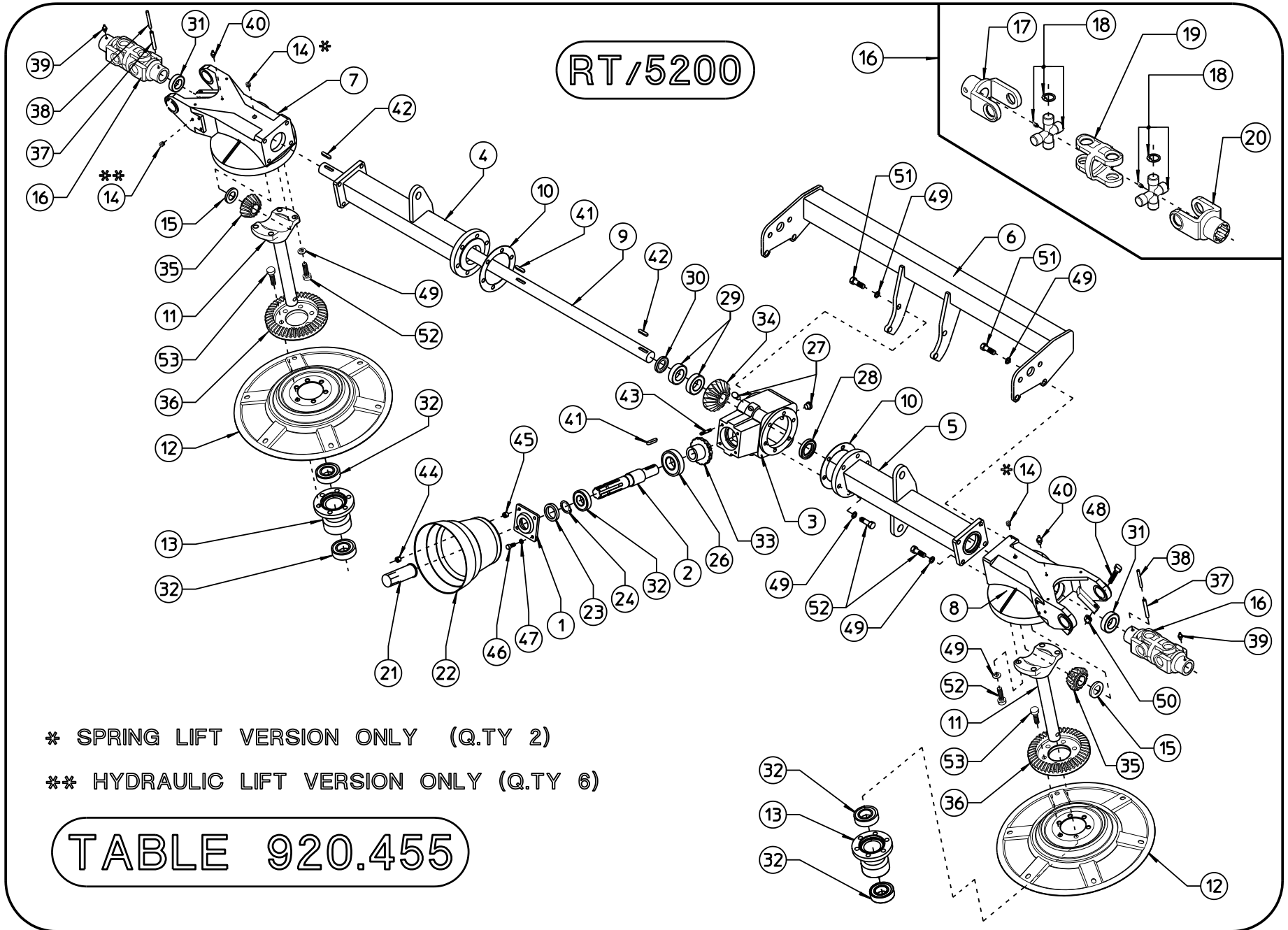


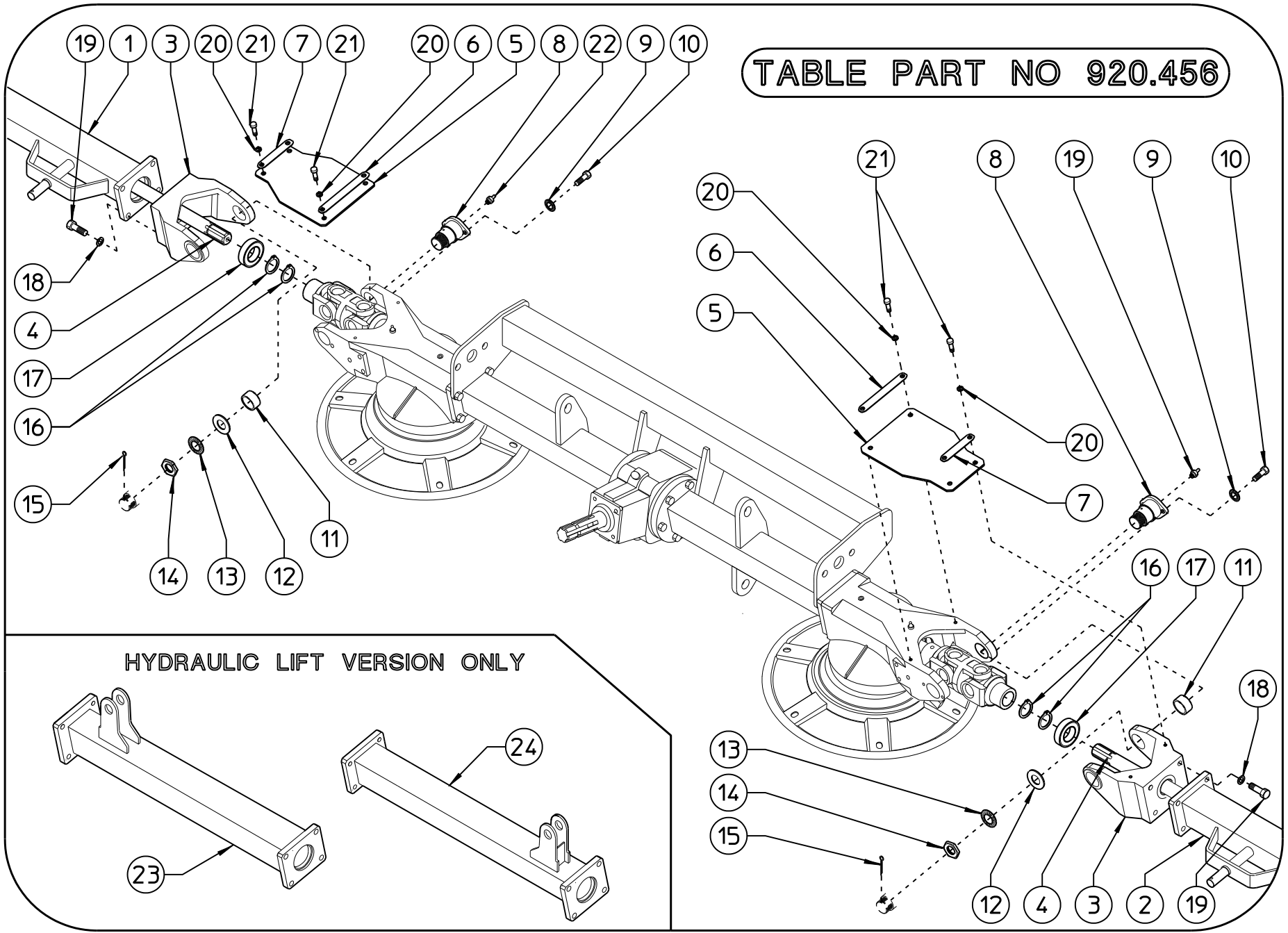
TABLE PART NO 920.453

TABLE PART NO 920.453				
ITEM	Q.ty	PART NO	DESCRIPTION	NOTE
1	2	260.058	LATERAL GUARD (DX-SX)	
2	2	250.914	SUPPORT	
3	4	600.618	SCREW M12x60 DIN 931 8.8	
4	4	600.634	SPRING WASHER (ø13-ZN)	
5	4	600.437	SCREW M10x55 DIN 931 8.8	
6	10	600.322	WASHER ø10,5 DIN 125 A	
7	6	600.029	NUT M10 DIN 980 KL 8.8	
8	6	200.309	PLUG	
9	4	600.156	SCREW M12x110 DIN 931 8.8	
10	8	600.089	WASHER ø13 DIN 125 A	
11	4	600.077	NUT M12 DIN 980 KL 8.8	
12	1	250.917	CENTER GUARD	
13	2	600.206	SCREW M10x120 DIN 931 8.8	
14	2	200.348	PLATE	
15	2	640.286	PLUG	



RT/5200 - TABLE PART NO 920.455 (HYDRAULIC AND SPRING LIFT VERSION)				
ITEM	Q.ty	PART NO	DESCRIPTION	NOTE
1	1	200.395	GEARBOX CAP	
2	1	200.396	SHAFT	
3	1	230.225	GEARBOX	
4	1	260.063	RH CENTER AXLE	
5	1	260.064	LH CENTER AXLE	
6	1	220.768	REINFORCEMENT	
7	1	220.652	RH FORK SUPPORT	
8	1	220.653	LH FORK SUPPORT	
9	1	220.527	DRIVE SHAFT	
10	2	200.405	GASCKET	
11	2	200.471	PIN	
12	2	220.820	TINE DISC	
13	2	220.836	HUB	
14	2*6	600.896	PLUG	
15	2	200.851	SHIM	
16	2	200.857	JOINT, COMPLETE	
17	2	600.813	FORK	
18	4	600.814	CROSS, COMPLETE	
19	2	600.815	CENTER JOINT	
20	2	600.816	SPLINED FORK	
21	1	600.172	SHAFT GUARD	
22	1	600.681	HOOD	
23	1	600.555	OIL RETAINER (ø35/52x10)	
24	1	600.333	SNAP RING (E35-7435)	
26	1	600.827	BEARING (6209 2RS)	
27	2	600.560	PLUG (3/8")	
28	1	600.561	OIL RETAINER (ø30/62x10)	
29	2	600.579	BEARING (6206)	
30	1	600.582	OIL RETAINER (ø30/56x10)	
31	2	600.609	BEARING (6206 2RS)	
32	5	600.608	BEARING (6207 2RS)	
33	1	200.397	PINION	
34	1	200.400	CROWN	
35	2	200.464	PINION	
36	2	220.774	CROWN	
37	2	600.541	SPRING PIN (ø10x55-6873)	
38	2	600.562	SPRING PIN (ø6x55-6873)	
39	2	600.124	GREASE NIPPLE (M6)	
40	2	600.247	GREASE NIPPLE (M10)	
41	2	600.556	FLAT KEY (B8x7x40-6604)	
42	2	600.559	FLAT KEY (B8x7x30-6604)	
43	2	600.558	BOLT (M8x30-5911)	
44	2	600.037	NUT (M8-5588)	
45	2	600.552	NUT (M8-5587)	
46	2	600.222	SCREW (M8x20-5739)	
47	2	600.228	SPRING WASHER (ø8,4)	
48	4	600.153	SCREW (M12x45-5739)	
49	28	600.049	SPRING WASHER (ø13)	
50	4	600.077	NUT (M12 DIN 980)	
51	8	600.687	SCREW (M12x45-5737)	
52	20	600.615	SCREW (M12x35-5739)	
53	12	600.004	SCREW (M12x30-5739)	

TABLE PART NO 920.456



HYDRAULIC LIFT VERSION ONLY

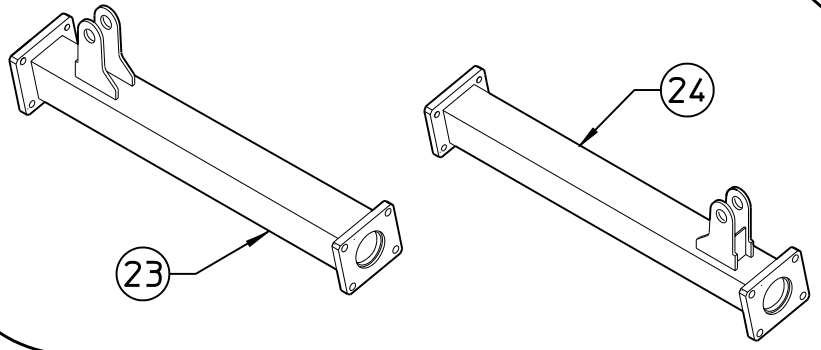
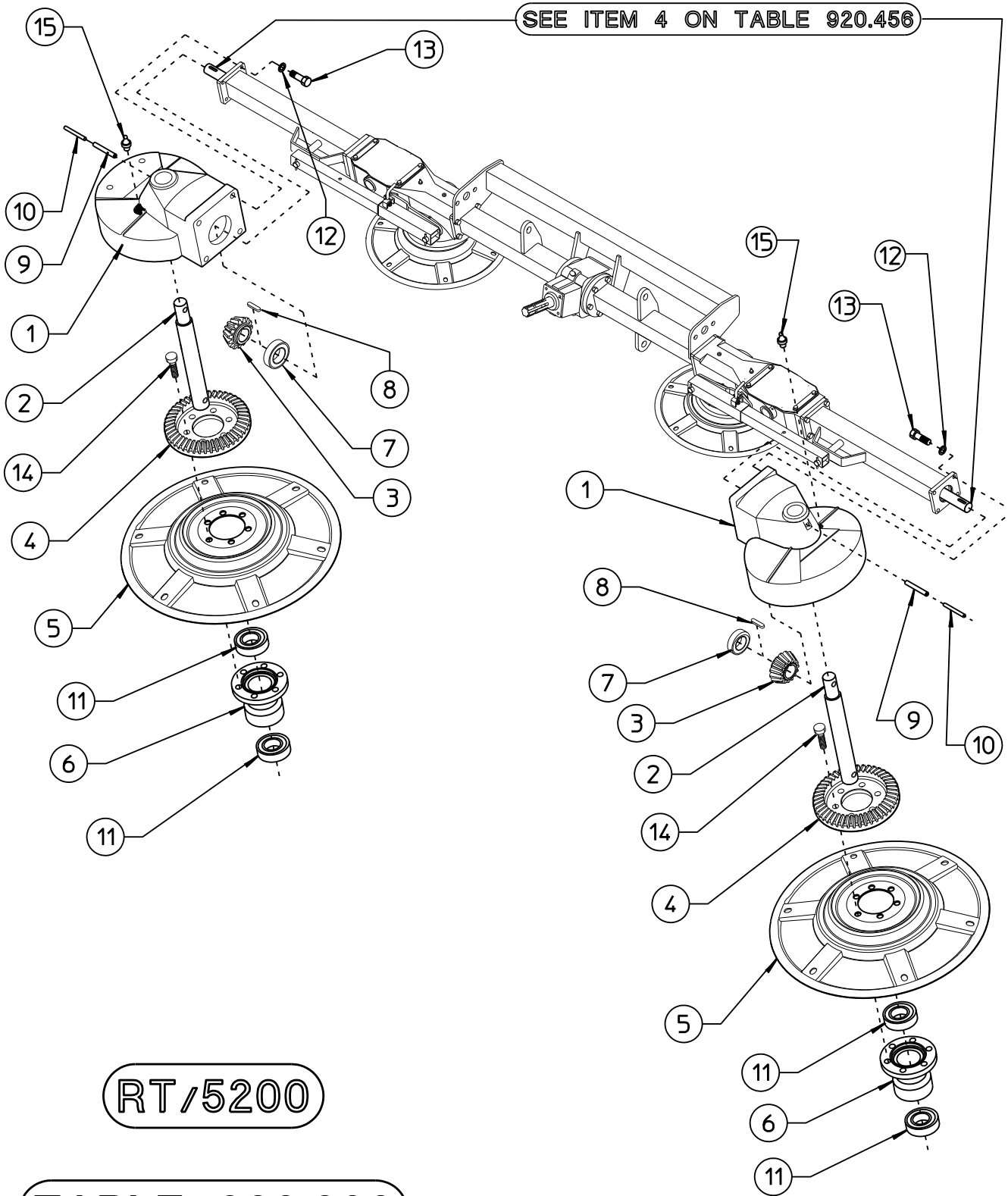


TABLE PART NO 920.456				
ITEM	Q.ty	PART NO	DESCRIPTION	NOTE
1	1	220.786	RH LATERAL AXLE	
2	1	220.787	LH LATERAL AXLE	
3	2	220.651	FORK	
4	2	200.852	LATERAL SHAFT	
5	2	220.810	GUARD	
6	2	220.811	PLATE	
7	2	220.812	PLATE	
8	4	250.963	PIN	
9	8	640.213	WASHER SCHNOOR S6	
10	8	630.003	SCREW M6x20 DIN 933 8.8	
11	4	600.808	BUSH ϕ 30/34x20	
12	4	250.977	SHIM ϕ 21-37x2,5	
13	4	640.212	WASHER SCHNOOR S20	
14	4	250.964	NUT M20x1	
15	4	600.306	SPLI PIN ϕ 3x30 DIN 94	
16	4	620.353	SNAP RING E29 DIN 471	
17	2	600.609	BEARING 6206 2RS	
18	8	600.018	SPRING WASHER ϕ 13 similar to DIN 127B	
19	8	620.301	SCREW M12x35 DIN 933 10.9	
20	8	600.115	WASHER ϕ 8,4 DIN 125A	
21	8	600.061	SCREW M8x16 DIN 933 8.8	
22	4	600.124	GREASE NIPPLE M6	
23	1	260.065	RH LATERAL AXLE (HYD. LIFT VERS.)	
24	1	260.066	LH LATERAL AXLE (HYD. LIFT VERS.)	

SEE ITEM 4 ON TABLE 920.456



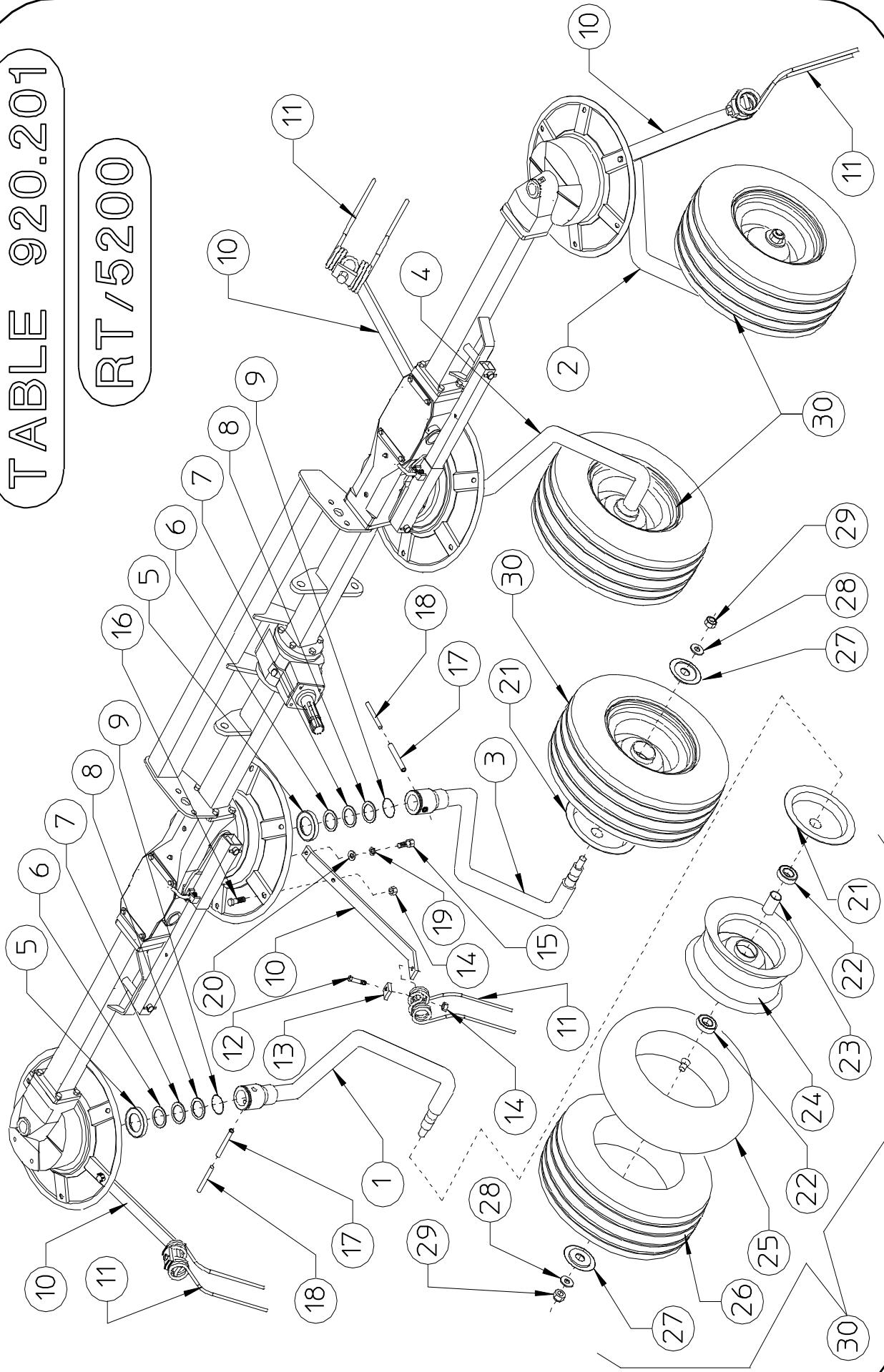
RT/5200

TABLE 920.200

RT/5200 -TABLE PART NO 920.200 (SPRING AND HYDRAULIC LIFT VERSION)				
ITEM	Q.ty	PART NO	DESCRIPTION	NOTE
1	2	220.637	GEAR BOX	
2	2	200.407	PIN	
3	2	200.464	PINION	
4	2	220.774	CROWN	
5	2	220.820	TINE DISC	
6	2	220.836	HUB	
7	2	600.609	BEARING (6206 2RS)	
8	2	600.559	FLAT KEY (B8x7x30-6604)	
9	2	600.541	SPRING PIN (ø10x55-6873)	
10	2	600.562	SPRING PIN (ø6x55-6873)	
11	4	600.608	BEARING (6207 2RS)	
12	8	600.049	SPRING WASHER (ø13)	
13	8	600.615	SCREW (M12x35-5739)	
14	12	600.004	SCREW (M12x30-5739)	
15	2	600.247	GREASE NIPPLES (M10)	

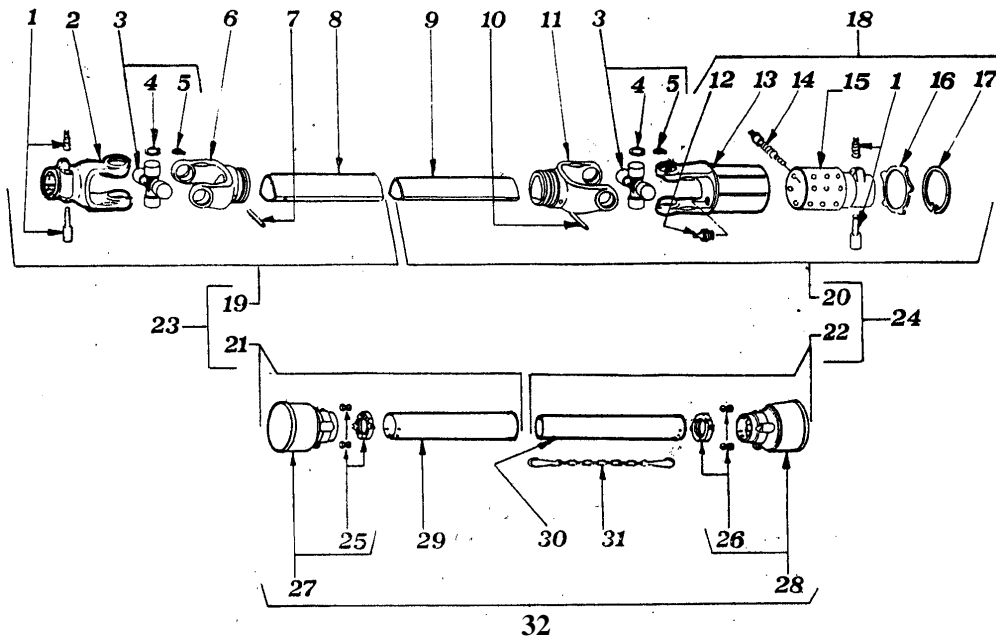
TABLE 920.201

RT/5200

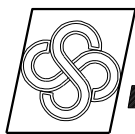


RT/5200 -TABLE PART NO 920.201 (SPRING AND HYDRAULIC LIFT VERSION)				
ITEM	Q.ty	PART NO	DESCRIPTION	NOTE
1	1	210.590	RH LATERAL SUPPORT	
2	1	210.591	LH LATERAL SUPPORT	
3	1	210.592	RH CENTER SUPPORT	
4	1	210.593	LH CENTER SUPPORT	
5	4	220.821	SPACER	
6	4*	200.419	SHIM (ø35,2/51,8x1)	*Q.ty as required
7	4*	200.274	SHIM (ø35,2/48x0,5)	*Q.ty as required
8	4*	200.490	SHIM (ø35,2/51,8x0,3)	*Q.ty as required
9	4	600.568	GASKET (OR 47,63x3,53)	
10	24	250.402	ARM	
11	24	210.574	TINE	
12	24	620.508	SCREW (M12x45-5737 ZN)	
13	24	200.402	PLATE	
14	48	620.355	NUT (M12-DIN 980)	
15	24	620.788	SCREW (M12x30-5739 ZN)	
16	24	600.616	SCREW (M12x35-5739 ZN)	
17	4	600.541	SPRING PIN (ø10x55-6873)	
18	4	600.562	SPRING PIN (ø6x55-6873)	
19	24	600.018	SPRING WASHER (ø13 ZN)	
20	24	220.864	WASHER (ø12,3/28,5x3)	
21	4	210.596	DUST COVER, INNER	
22	8	600.602	BEARING (6205 2RS)	
23	4	200.415	SPACER	
24	4	610.273	RIM	
25	4	610.274	TUBE	
26	4	610.275	TIRE	
27	4	200.416	DUST COVER, OUTER	
28	4	600.031	WASHER (ø17 ZN)	
29	4	600.080	NUT (M16-DIN 980)	
30	4	610.272	TIRE ASSY (16x6,50-8 6PLY)	

**CARDAN SHAFT B3 150E + LW3
PART NO. 620.241**



CARDAN SHAFT 620.241				
ITEM	PART NO	Q.ty	DESCRIPTION	NOTE
1	610.057	2	COMPLETE PUSH BUTTON	
2	610.071	1	YOKE	
3	610.070	2	CROSS JOURNAL ASS.	
4	610.205	8	CIRCLIP	
5	610.206	2	GREASE NIPPLE	
6	610.207	1	OUTER TUBE YOKE	
7	610.208	1	FLEXIBLE PIN	
8	620.287	1	CM. CARDAN TUBE	
9	620.288	1	CM. CARDAN TUBE	
10	610.211	1	FLEXIBLE PIN	
11	610.212	1	INNER TUBE YOKE	
12	610.216	1	GREASE NIPPLE	
13	610.217	1	OUTER CASING WITH YOKE	
14	610.218	24	RATCHET TOOTH	
15	610.219	1	HUB	
16	610.220	1	REATING WASHER	
17	610.221	1	CIRCLIP	
18	610.213	1	TORQUE LW3	
19	620.289	1	HALF SHAFT (WITHOUT GUARD)	
20	620.290	1	HALF SHAFT (WITHOUT GUARD)	
21	620.291	1	HALF SAFETY GUARD	
22	620.292	1	HALF SAFETY GUARD	
23	620.293	1	HALF SHAFT (WITH GUARD)	
24	620.294	1	HALF SHAFT (WITH GUARD)	
25	610.078	1	O. BEARING	
26	610.079	1	I. BEARING	
27	610.080	1	O. BASIC CONE	
28	610.081	1	I. BASIC CONE	
29	620.295	1	CM. SAFETY TUBE	
30	620.296	1	CM. SAFETY TUBE	
31	610.068	1	CHaine	
32	620.297	1	SAFETY GUARD	



AGRICULTURAL MACHINERY
sitrex® Spa

Zona Industriale-Viale Grecia, 8
06018 TRESTINA-(Perugia)-ITALY
Tel. +39.075.8540021-Telefax +39.075.8540523
e-mail: sitrex@sitrex.it www.sitrex.com

