



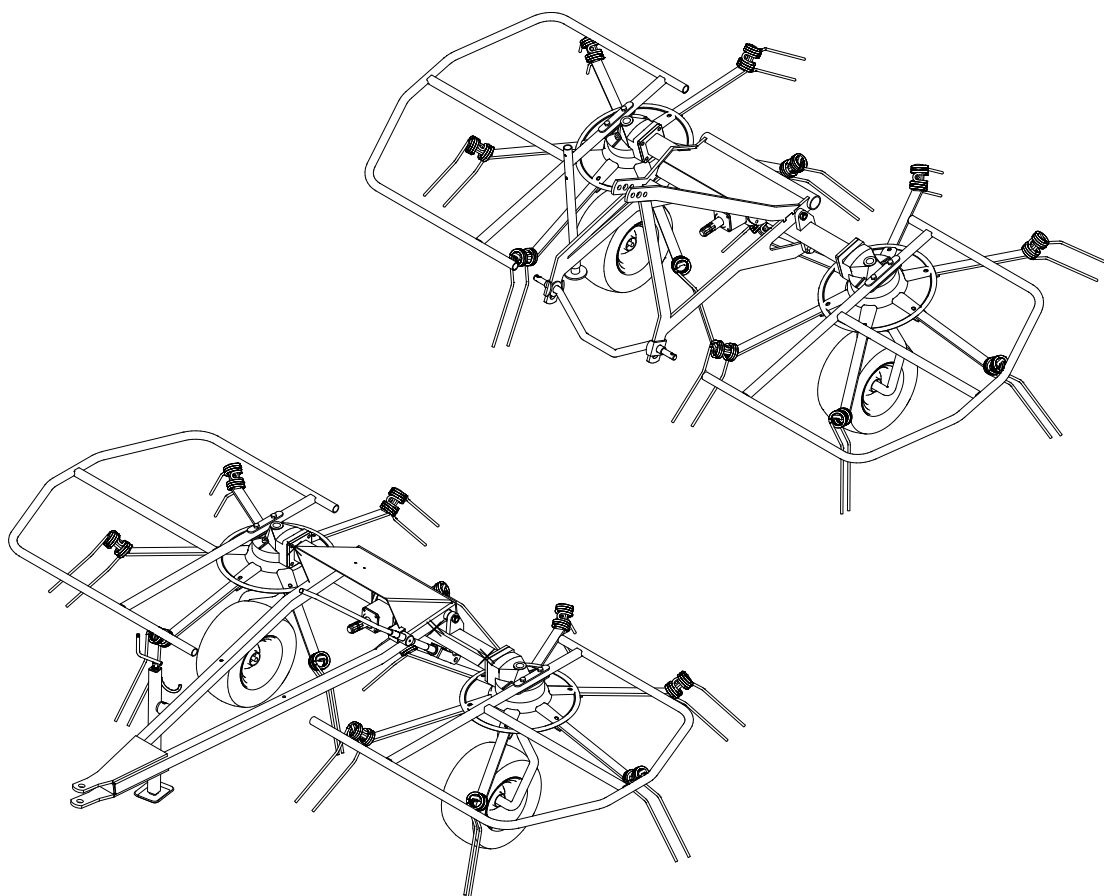
AGRICULTURAL MACHINERY

sitrex®
Spa

ASSEMBLY, USE AND MAINTENANCE SPARE PARTS LIST

RT/2500-RT/3000

PULL TYPE AND 3rd POINT HITCH



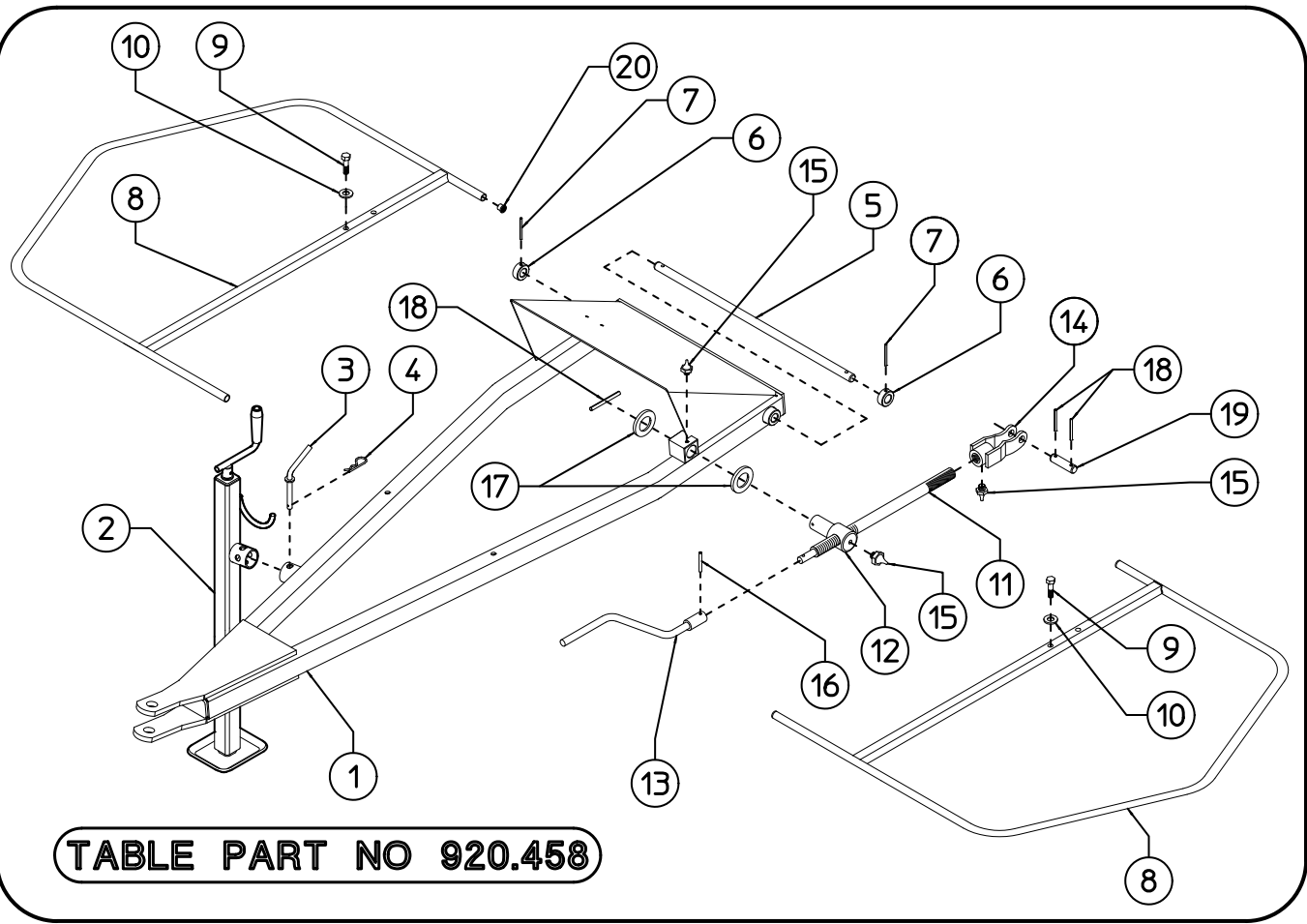
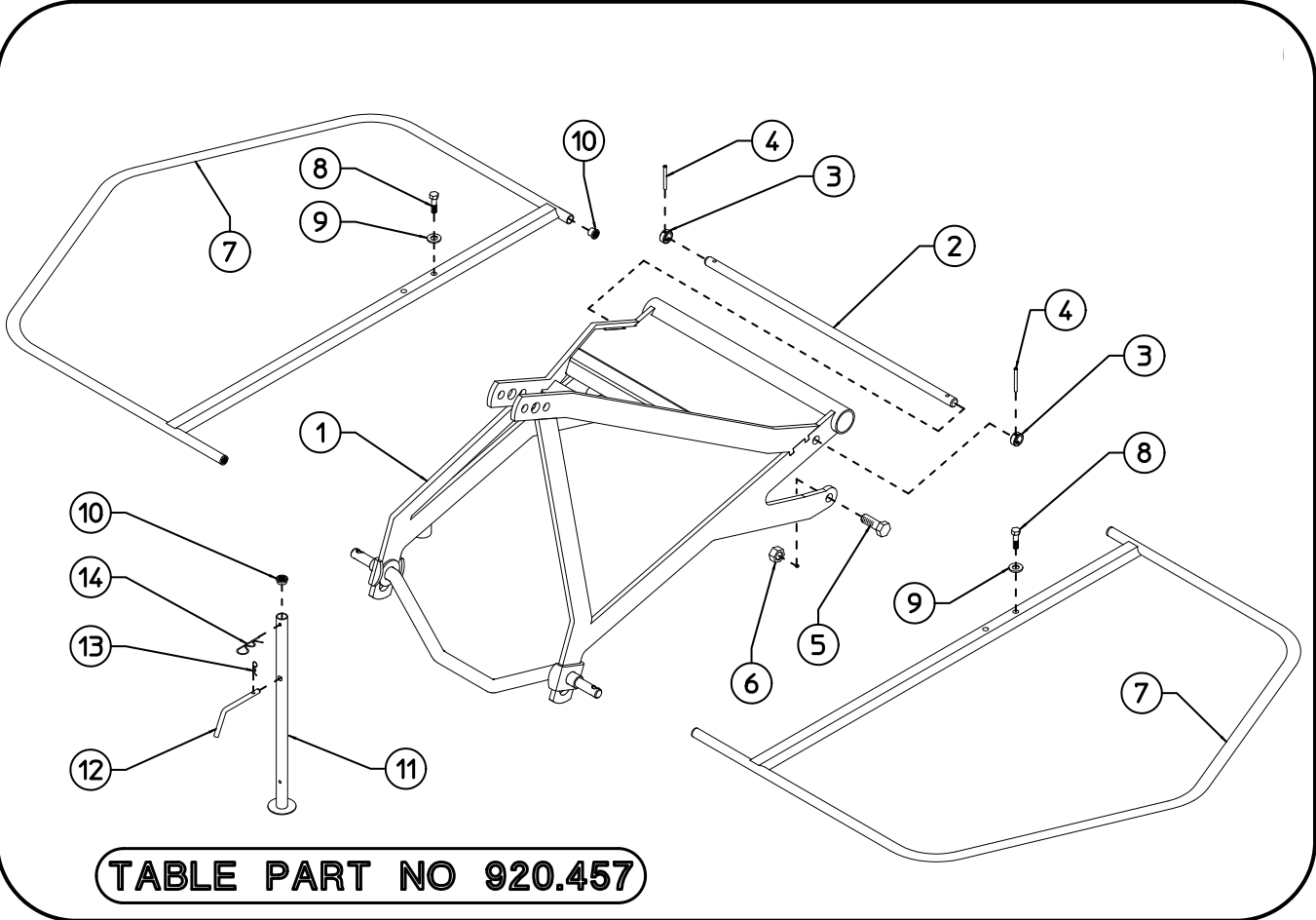
ROTARY TEDDER

09/16

SPARE PARTS LIST

FOR CORRECT SPARE PARTS ORDER IT IS NECESSARY TO SPECIFY:
TABLE NUMBER, ITEM, PART NO, DESCRIPTION AND QUANTITY OF
PARTS REQUIRED.

ITEMS DESCRIBED AS RH AND LH ARE MEANT FACING REAR OF
MACHINE.



RT/2500-RT/3000 - TABLE PART NO 920.457 - 3rd POINT HITCH				
ITEM	Q.ty	PART NO	DESCRIPTION	NOTE
1	1	260.154	3rd POINT HITCH	
2	1	250.927	PIN	
3	2	250.928	BUSH \varnothing 20,5-30x12	
4	2	600.182	SPRING PIN \varnothing 5x30 DIN 1481	
5	2	631.343	SCREW M20x55 DIN 933	
6	2	600.717	NUT M20 DIN 980 KL8	
7	2	260.155	LATERAL GUARD (RH-LH)	
8	4	600.618	SCREW M12x60 DIN 931 8.8	
9	4	600.634	SPRING WASHER \varnothing 13	
10	5	200.309	PLUG	
11	1	220.438	STAND	
12	1	200.328	PIN	
13	1	600.019	PIN	
14	1	600.020	PIN	

RT/2500-RT/3000 - TABLE PART NO 920.458 - PULL TYPE				
ITEM	Q.ty	PART NO	DESCRIPTION	NOTE
1	1	260.209	DRAWBAR	
2	1	250.849	STAND	
3	1	200.959	PIN	
4	1	600.019	PIN	
5	1	250.927	PIN	
6	2	250.928	BUSH \varnothing 20,5-30x12	
7	2	600.182	SPRING PIN \varnothing 5x30 DIN 1481	
8	2	260.036	LATERAL GUARD (RH-LH)	
9	4	600.618	SCREW M12x60 DIN 931 8.8	
10	4	600.634	SPRING WASHER \varnothing 13	
11	1	200.766	TIE ROD M27	
12	1	220.807	PIN	
13	1	200.438	HANDLE	
14	1	220.808	FORK	
15	3	600.124	GREASE NIPPLE M6	
16	1	600.773	SPRING PIN \varnothing 6x30 DIN 1481	
17	2	200.273	SHIM \varnothing 30,3-39,8x1	
18	3	600.673	SPRING PIN \varnothing 5x40 DIN 1481	
19	1	220.809	PIN	
20	4	200.309	PLUG	

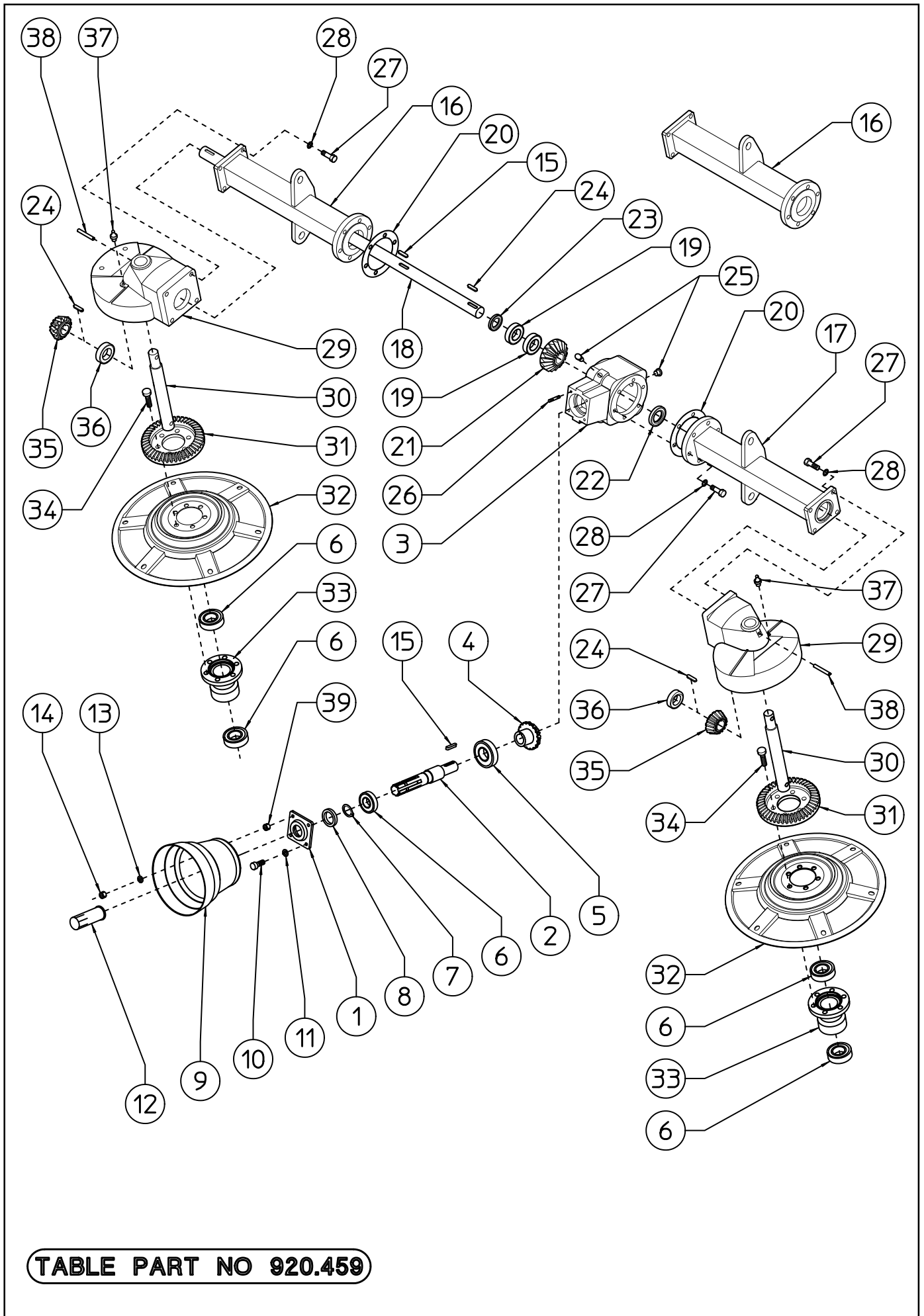
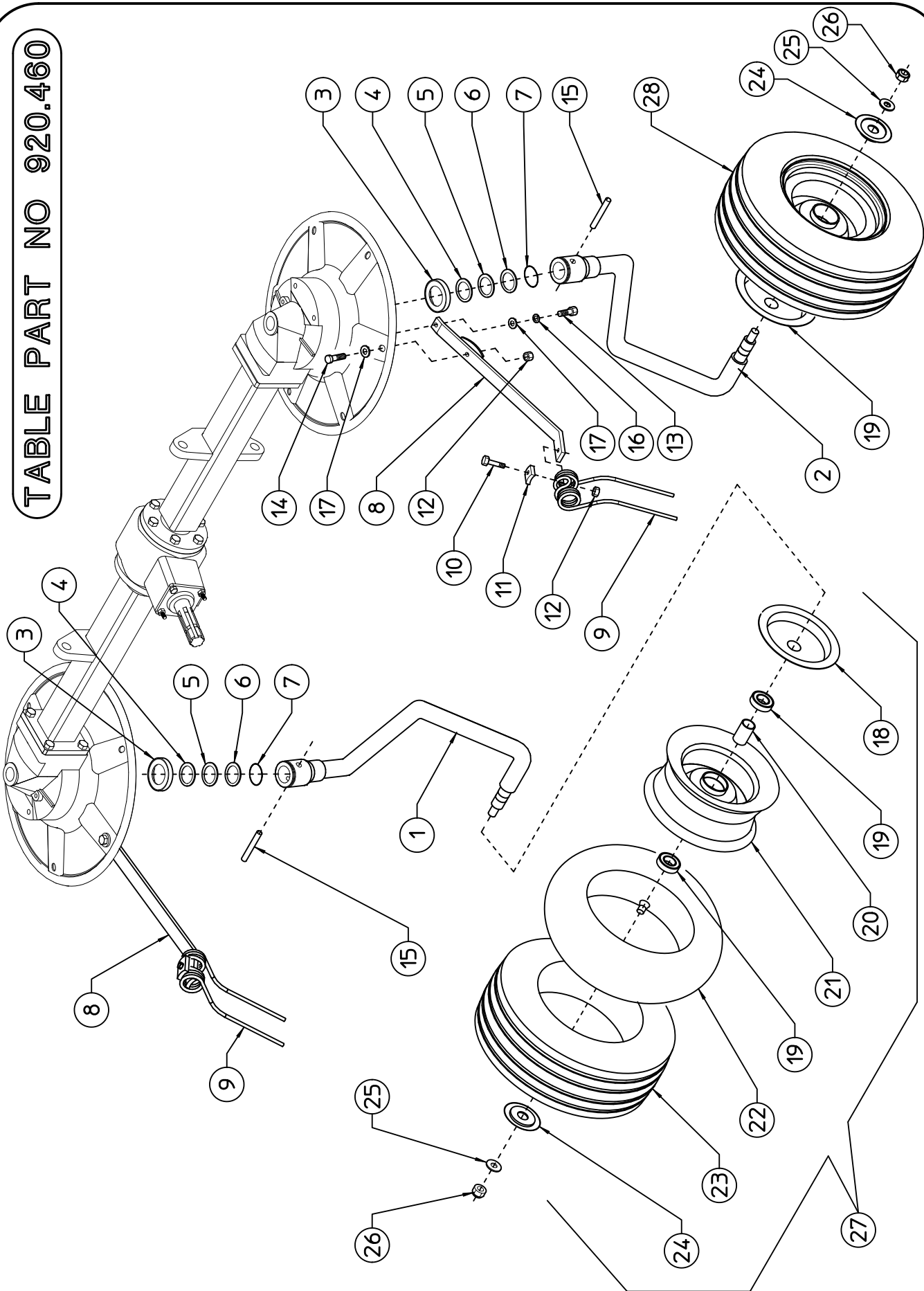


TABLE PART NO 920.459

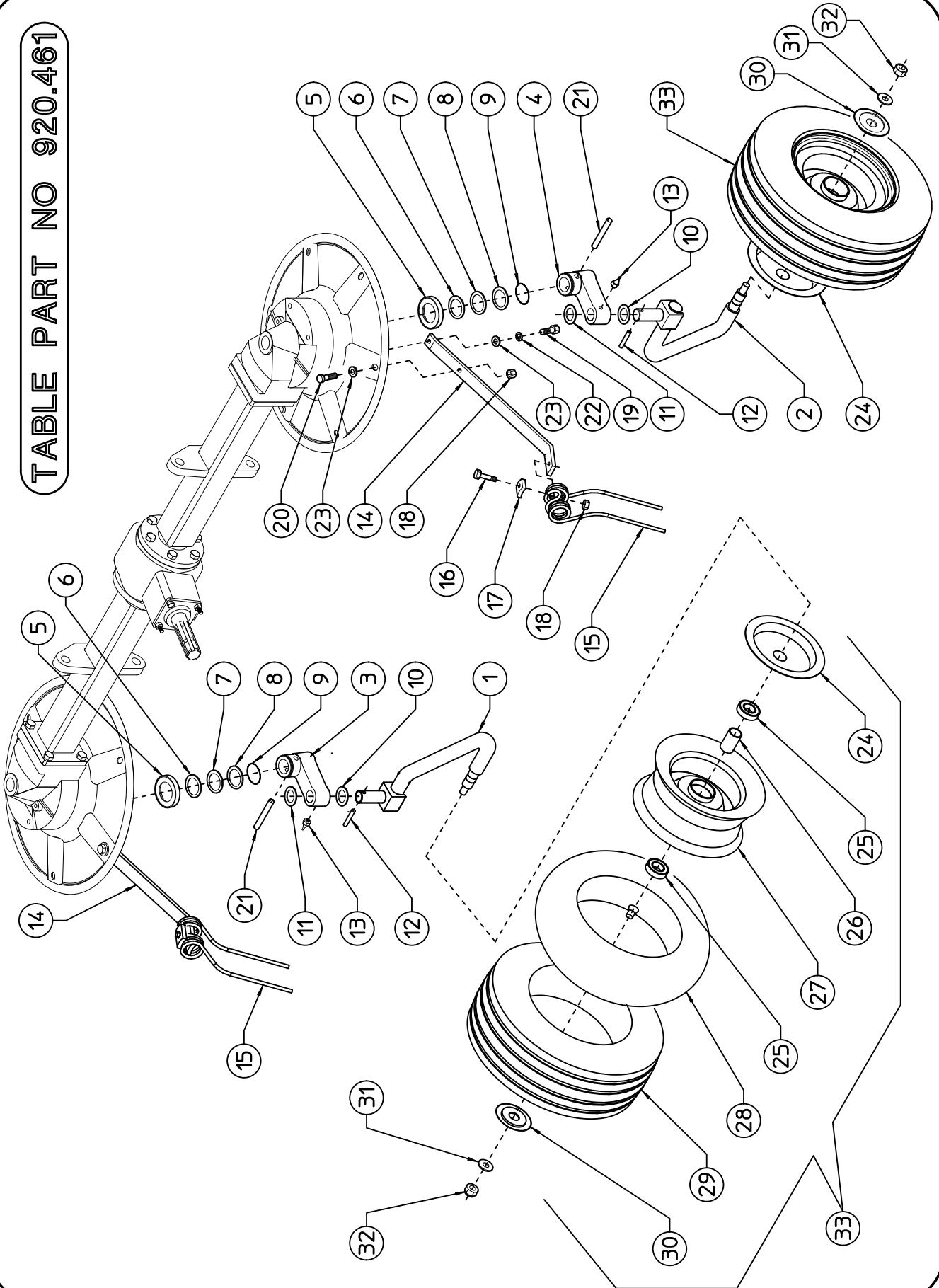
TABLE PART NO 920.459				
ITEM	PART NO	Q.ty	DESCRIPTION	NOTE
1	200.395	1	GEARBOX CAP	
2	200.396	1	SHAFT	
3	230.225	1	GEARBOX	
4	200.397	1	PINION Z16	
5	600.827	1	BEARING 6209 2RS	
6	600.608	5	BEARING 6207 2RS	
7	600.333	1	SNAP RING E35 DIN471	
8	600.555	1	OIL RETAINER \varnothing 35/52x10	
9	600.681	1	HOOD	
10	600.223	2	SCREW M8x20 DIN 933 8.8	
11	600.229	2	SPRING WASHER \varnothing 8,4 similar to DIN 127B	
12	600.172	1	SHAFT GUARD	
13	600.115	2	WASHER \varnothing 8,4 DIN 125A	
14	600.037	2	NUT M8 DIN 934	
15	600.556	2	FLAT KEY B8x7x40 DIN 6885	
16	260.156	1	RH CENTER AXLE	ONLY 3rd POINT
16	220.791	1	RH CENTER AXLE	ONLY PULL TYPE
17	220.792	1	LH CENTER AXLE	
18	220.788	1	DRIVE SHAFT	
19	600.579	2	BEARING 6206	
20	200.405	2	GASKET	
21	200.400	1	CROWN Z23	
22	600.561	1	OIL RETAINER \varnothing 30/62x10	
23	600.582	1	OIL RETAINER \varnothing 30/56x10	
24	600.559	3	FLAT KEY B8x7x30 DIN 6885	
25	600.580	2	PLUG 3/8"	
26	600.558	2	BOLT M8x30 UNI 5911 8.8	
27	620.301	20	SCREW M12x35 DIN 933 10.9	
28	600.018	20	SPRING WASHER \varnothing 13 similar to DIN 127B	
29	220.637	2	GEARBOX	
30	200.407	2	PIN	
31	220.833	2	CROWN Z35	
32	220.834	2	TINE DISC	
33	220.836	2	HUB	
34	620.788	12	SCREW M12x30 DIN 933 10.9	
35	200.420	2	PINION Z15	
36	600.609	2	BEARING 6206 2RS	
37	600.247	2	GREASE NIPPLES M10	
38	640.064	2	SPRING PIN \varnothing 10x55 DIN 7334	
39	600.553	2	NUT M8 UNI 5587	

TABLE PART NO 920.460



RT/2500-RT/3000 - TABLE 920.460 - PULL TYPE VERSION					
ITEM	Q.ty	PART NO	PART NO	DESCRIPTION	NOTE
		RT/2500	RT/3000		
1	1	210.590	210.590	RH LATERAL SUPPORT	
2	1	210.591	210.591	LH LATERAL SUPPORT	
3	2	220.821	220.970	SPACER	
4	2	200.419	200.419	SHIM (ø35,2/51,8x1)	*Q.ty as required
5	2	200.274	200.274	SHIM (ø35,2/48x0,5)	*Q.ty as required
6	2	200.490	200.490	SHIM (ø35,2/51,8x0,3)	*Q.ty as required
7	2	600.568	600.568	GASKET (OR 47,63x3,53)	
8	12	250.402	230.926	ARM	
9	12	210.574	210.574	TINE	
10	12	620.508	620.508	SCREW (M12x45-5737 ZN 10.9)	
11	12	200.402	200.402	PLATE	
12	24	600.077	600.077	NUT (M12-DIN 980)	
13	12	620.788	620.788	SCREW (M12x30-5739 ZN 10.9)	
14	12	640.218	640.218	SCREW (M12x40-5739 ZN 10.9)	
15	2	640.054	640.054	SPRING PIN (ø10x55-DIN 7334)	
16	12	600.018	600.018	SPRING WASHER (ø13 ZN)	
17	24	220.864	220.864	WASHER (ø12,3/28,5x3)	
18	2	210.596	210.596	DUST COVER, INNER	
19	4	600.602	600.602	BEARING (6205 2RS)	
20	2	200.415	200.415	SPACER	
21	2	610.273	610.273	RIM	
22	2	610.274	610.274	TUBE	
23	2	610.275	610.275	TIRE	
24	2	200.416	200.416	DUST COVER, OUTER	
25	2	600.031	600.031	WASHER (ø17 ZN)	
26	2	600.080	600.080	NUT (M16-DIN 980)	
27	2	610.272	610.272	TIRE ASSY (16x6,50-8 6PLY)	

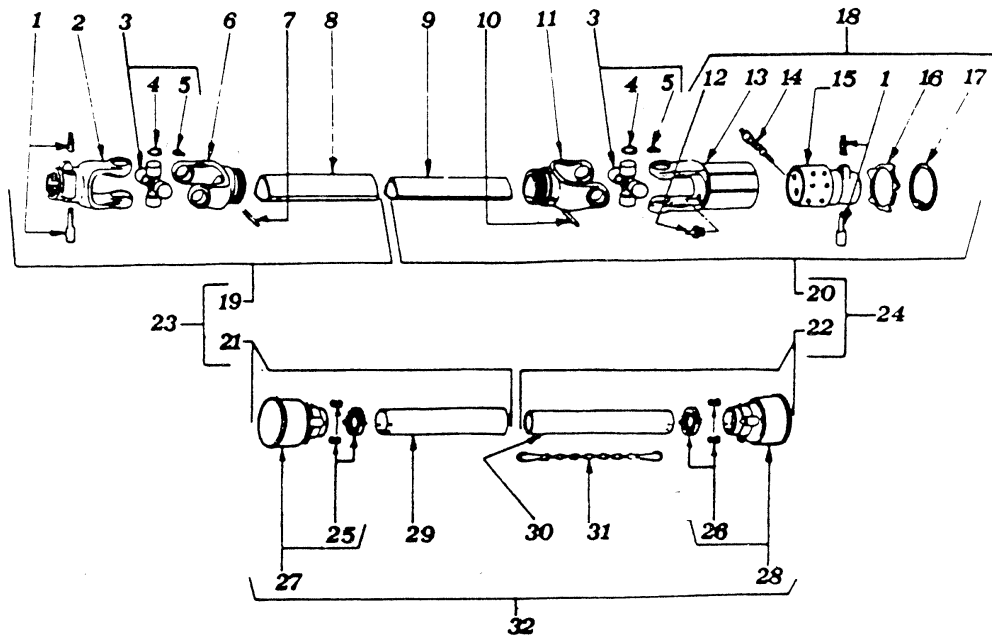
TABLE PART NO 920.461



RT/2500-RT/3000 - TABLE 920.461 - 3rd POINT HITCH

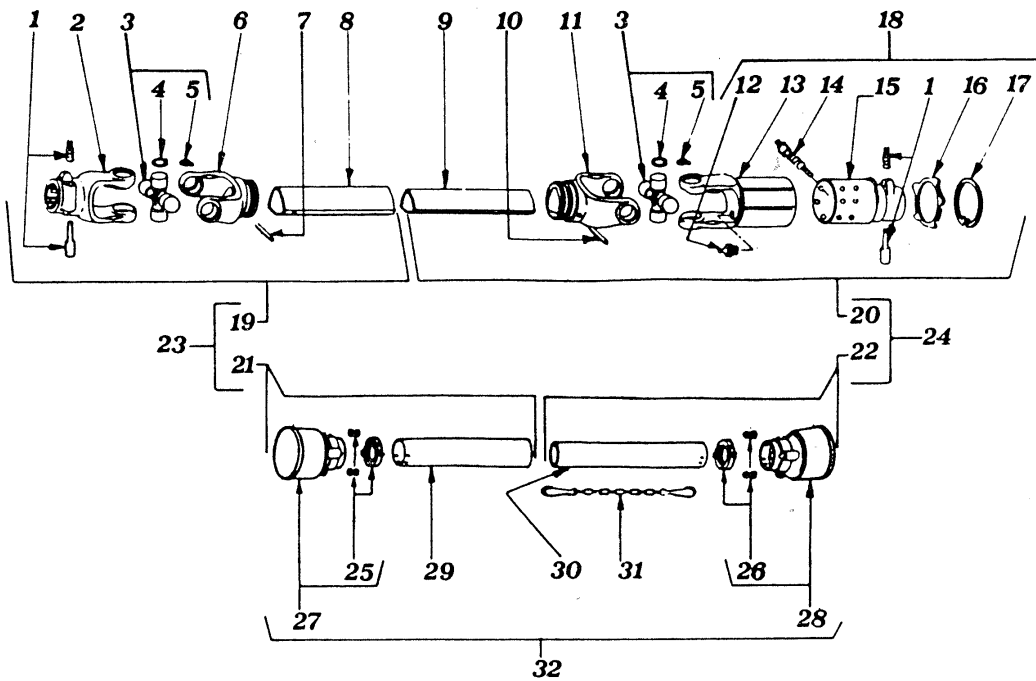
ITEM	Q.ty	PART NO		DESCRIPTION	NOTE
		RT/2500	RT/3000		
1	1	230.231	230.231	RH SUPPORT	
2	1	230.232	230.232	LH SUPPORT	
3	1	200.467	200.467	RH SUPPORT	
4	1	200.468	200.468	LH SUPPORT	
5	2	220.821	220.970	SPACER	
6	2	200.419	200.419	SHIM (ø35,2/51,8x1)	*Q.ty as required
7	2	200.274	200.274	SHIM (ø35,2/48x0,5)	*Q.ty as required
8	2	200.490	200.490	SHIM (ø35,2/51,8x0,3)	*Q.ty as required
9	2	600.568	600.568	GASKET (OR 47,63x3,53)	
10	2	200.273	200.273	SHIM (ø30,3/39,8x1)	*Q.ty as required
11	2	200.272	200.272	SHIM (ø30,3/39,8x0,5)	*Q.ty as required
12	2	600.539	600.539	SPRING PIN (ø6x45-6873)	
13	2	600.124	600.124	GREASE NIPPLE (M6)	
14	12	250.402	230.926	ARM	
15	12	210.574	210.574	TINE	
16	12	620.508	620.508	SCREW (M12x45-5737 ZN 10.9)	
17	12	200.402	200.402	PLATE	
18	24	600.077	600.077	NUT (M12-DIN 980)	
19	12	620.788	620.788	SCREW (M12x30-5739 ZN 10.9)	
20	12	640.218	640.218	SCREW (M12x40-5739 ZN 10.9)	
21	2	640.064	640.064	SPRING PIN (ø10x55-DIN 7334)	
22	12	600.018	600.018	SPRING WASHER (ø13 ZN)	
23	24	220.864	220.864	WASHER (ø12,3/28,5x3)	
24	2	210.596	210.596	DUST COVER, INNER	
25	4	600.602	600.602	BEARING (6205 2RS)	
26	2	200.415	200.415	SPACER	
27	2	610.273	610.273	RIM	
28	2	610.274	610.274	TUBE	
29	2	610.275	610.275	TIRE	
30	2	200.416	200.416	DUST COVER, OUTER	
31	2	600.031	600.031	WASHER (ø17 ZN)	
32	2	600.080	600.080	NUT (M16-DIN 980)	
33	2	610.272	610.272	TIRE ASSY (16x6,50-8 6PLY)	

CARDAN SHAFT B2 130 E + LW2
 PART NO. 600.680
 RT/2500-RT/3000

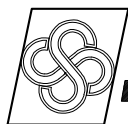


CARDAN SHAFT 600.680				
ITEM	PART NO	Q.ty	DESCRIPTION	NOTE
1	610.057	2	COMPLETE PUSH BUTTON	
2	610.051	1	YOKE	
3	610.052	2	CROSS JOURNAL ASS.	
4	610.248	8	CIRCLIP	
5	610.206	2	GREASE NIPPLE	
6	610.249	1	OUTER TUBE YOKE	
7	610.211	1	FLEXIBLE PIN	
8	610.210	1	CM. CARDAN TUBE	
9	610.123	1	CM. CARDAN TUBE	
10	600.027	1	FLEXIBLE PIN	
11	610.250	1	INNER TUBE YOKE	
12	610.216	1	GREASE NIPPLE	
13	610.251	1	OUTER CASING WITH YOKE	
14	610.218	16	RATCHET TOOTH	
15	610.252	1	HUB	
16	610.220	1	REATING WASHER	
17	610.253	1	CIRCLIP	
18	610.146	1	TORQUE LW2	
19	610.254	1	HALF SHAFT (WITHOUT GUARD)	
20	610.255	1	HALF SHAFT (WITHOUT GUARD)	
21	610.256	1	HALF SAFETY GUARD	
22	610.257	1	HALF SAFETY GUARD	
23	610.258	1	HALF SHAFT (WITH GUARD)	
24	610.259	1	HALF SHAFT (WITH GUARD)	
25	610.060	1	O. BEARING	
26	610.061	1	I. BEARING	
27	610.062	1	O. BASIC CONE	
28	610.063	1	I. BASIC CONE	
29	610.260	1	CM. SAFETY TUBE	
30	610.261	1	CM. SAFETY TUBE	
31	610.068	1	CHAINE	
32	610.262	1	SAFETY GUARD	
*	600.680	1	CARDAN SHAFT B2 130E + LW2	

CARDAN SHAFT B2 090 + LW2
 PART NO. 600.732
 RT/2500-RT/3000



CARDAN SHAFT 600.732				
ITEM	PART NO	Q.ty	DESCRIPTION	NOTE
1	610.057	2	COMPLETE PUSH BUTTON	
2	610.051	1	YOKE	
3	610.052	2	CROSS JOURNAL ASS.	
4	610.248	8	CIRCLIP	
5	610.206	2	GREASE NIPPLE	
6	610.249	1	OUTER TUBE YOKE	
7	610.211	1	FLEXIBLE PIN	
8	610.210	1	CM. CARDAN TUBE	
9	610.123	1	CM. CARDAN TUBE	
10	600.027	1	FLEXIBLE PIN	
11	610.250	1	INNER TUBE YOKE	
12	610.216	1	GREASE NIPPLE	
13	610.251	1	OUTER CASING WITH YOKE	
14	610.218	16	RATCHET TOOTH	
15	610.252	1	HUB	
16	610.220	1	REATING WASHER	
17	610.253	1	CIRCLIP	
18	610.146	1	TORQUE LW2	
19	610.404	1	HALF SHAFT (WITHOUT GUARD)	
20	610.430	1	HALF SHAFT (WITHOUT GUARD)	
21	610.428	1	HALF SAFETY GUARD	
22	610.429	1	HALF SAFETY GUARD	
23	610.431	1	HALF SHAFT (WITH GUARD)	
24	610.432	1	HALF SHAFT (WITH GUARD)	
25	610.060	1	O. BEARING	
26	610.061	1	I. BEARING	
27	610.062	1	O. BASIC CONE	
28	610.063	1	I. BASIC CONE	
29	610.402	1	CM. SAFETY TUBE	
30	610.403	1	CM. SAFETY TUBE	
31	610.068	1	CHAINE	
32	610.069	1	SAFETY GUARD	
*	600.732	1	CARDAN SHAFT B2 090 E + LW2	



AGRICULTURAL MACHINERY
sitrex® s.r.l.

Zona Industriale-Viale Grecia, 8
06018 TRESTINA-(Perugia)-ITALY
Tel. +39.075.8540021-Telefax +39.075.8540523
e-mail: sitrex@sitrex.it www.sitrex.com

