

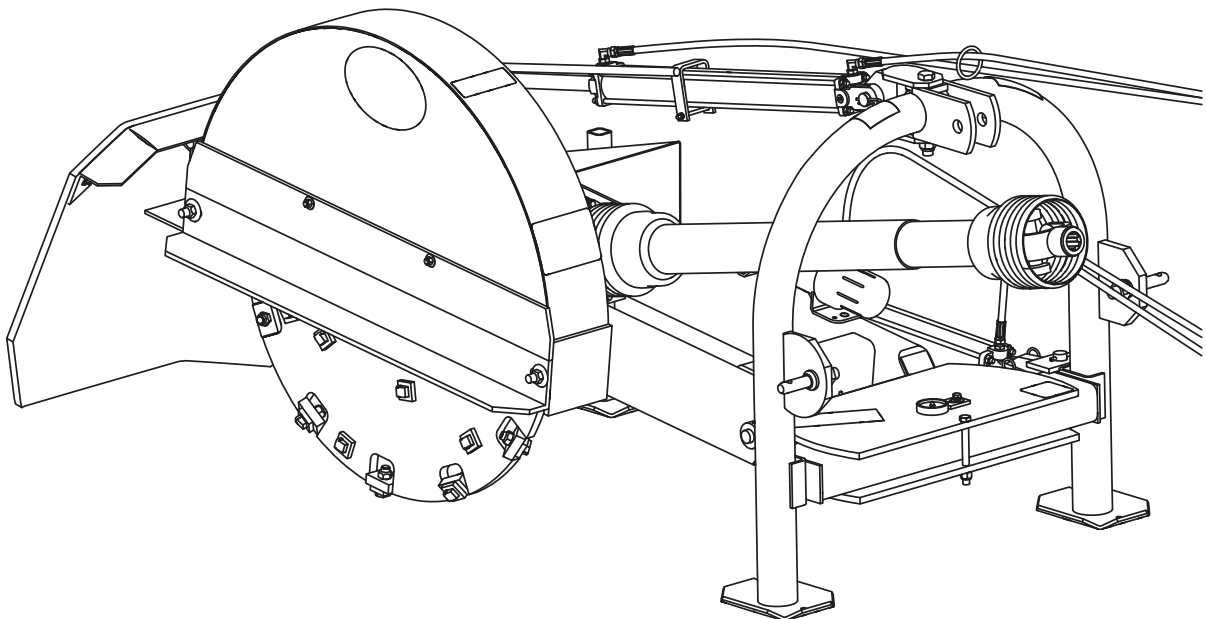


Operation and Parts Manual

3-Point PTO and Hydraulic
Stump Grinders

Models:
SC-25 and SC-25H
SC-50 and SC-50H

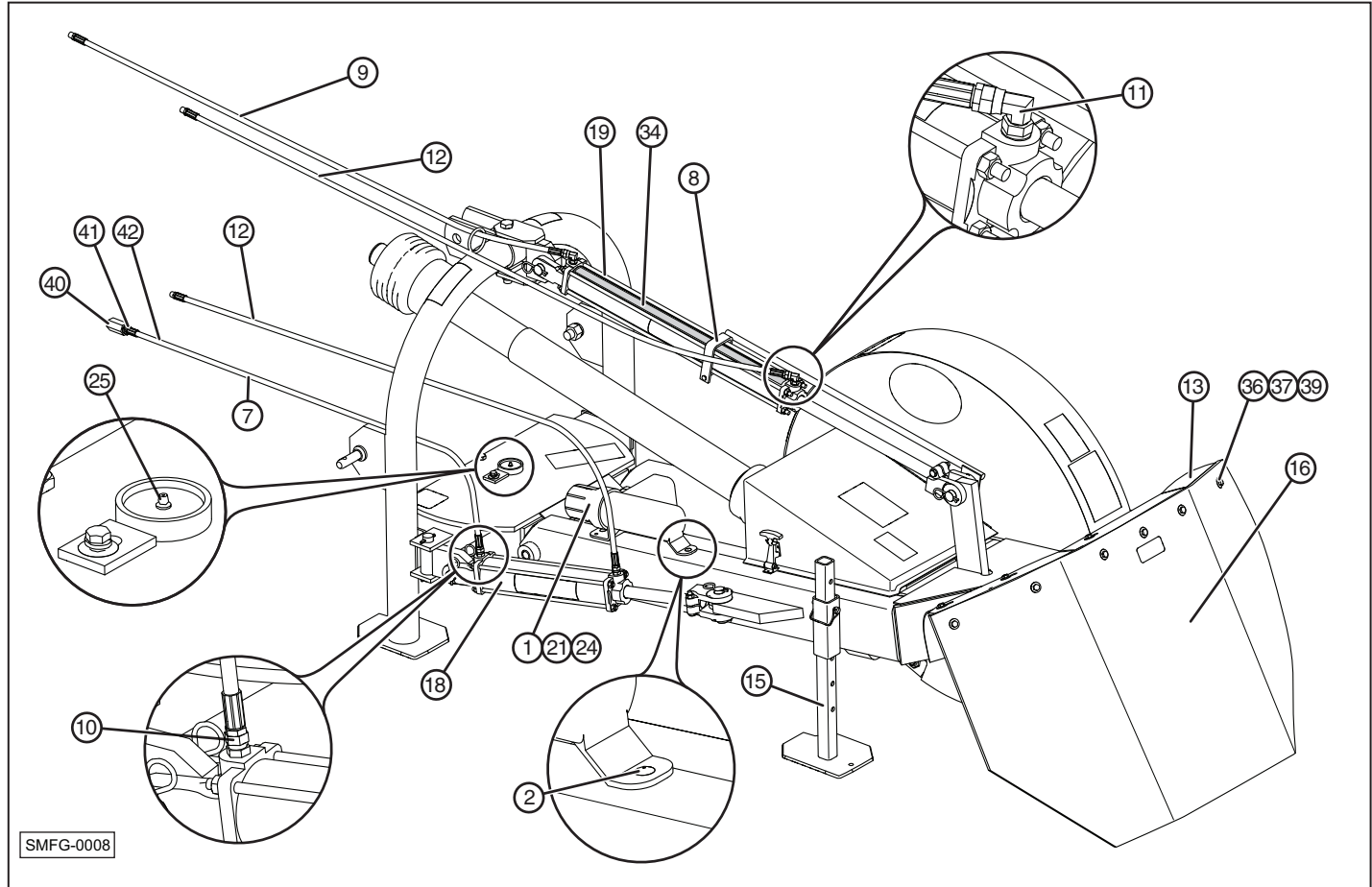
Safety
Operation
Maintenance
Repair
Troubleshooting
Parts



Parts

SC-50 and SC-50-H Stumpbuster

SC-50 Main Assembly

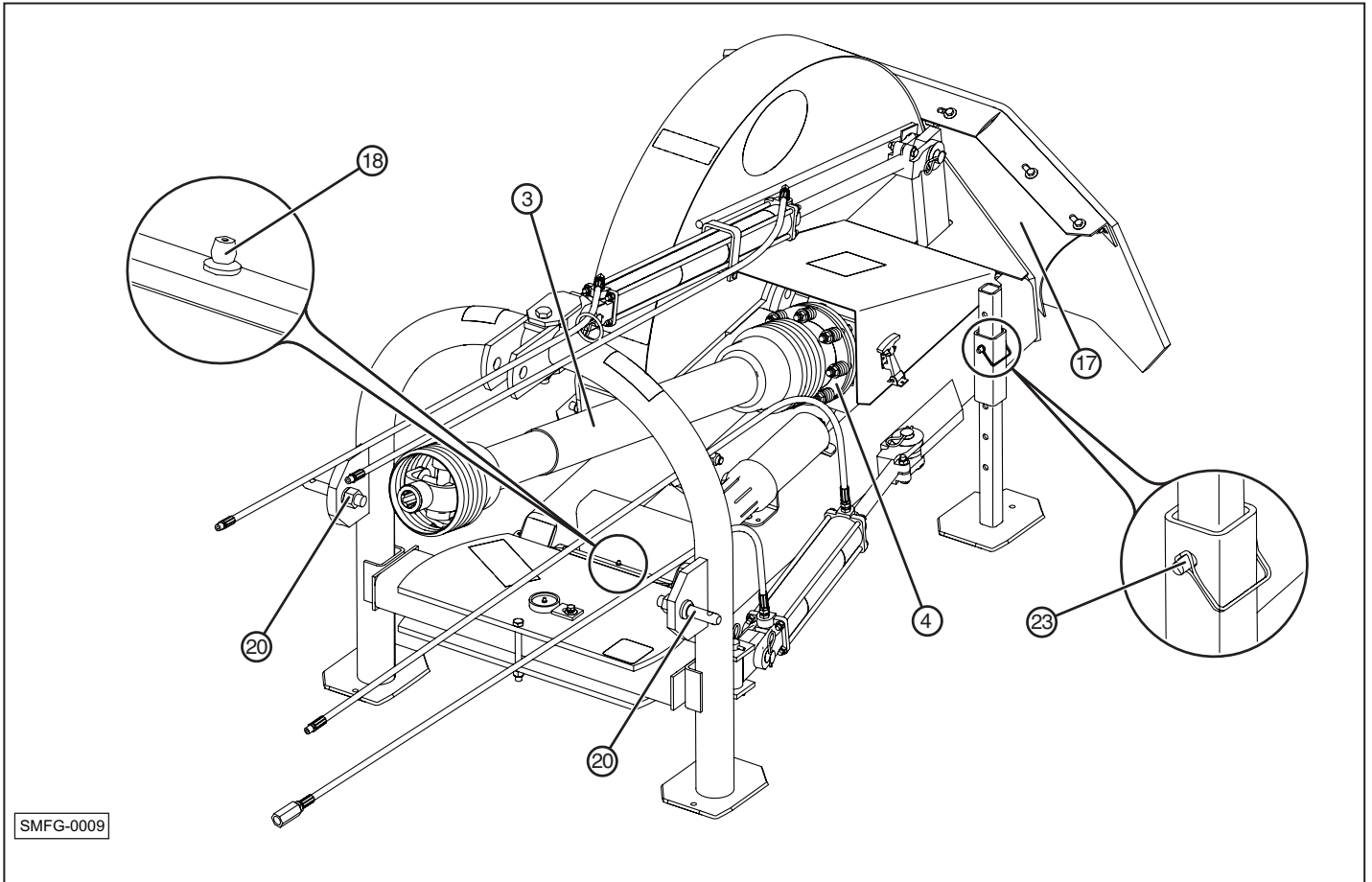


SMFG-0008

Item	Qty.	Part No.	Description
1	1	OPMAN-TUBE-3.25	Operator Manual Container 3-1/4
2	2	OPMAN-RIVET	Rivet for Operator Manual
7	1	SC-105	Restricted Hose Assy
8	1	SC-2550-DG	Depth Gauge
9	1	SC-50-12	Hose 1/4 x 5'
10	2	SC-50-13	Fitting 9/16 x 1/4
11	2	SC-50-131	O-Ring 9/16 x 1/4 90 Degree
12	2	SC-50-16	Hose 1/4 x 6'
13	1	SC-50-2U	Flap Holder Assy
15	1	SC-50-27	Jack Stand Leg
16	1	SC-50-30	Safety Shield w/Bolts
18	1	SC-50-614	Side Cylinder Only

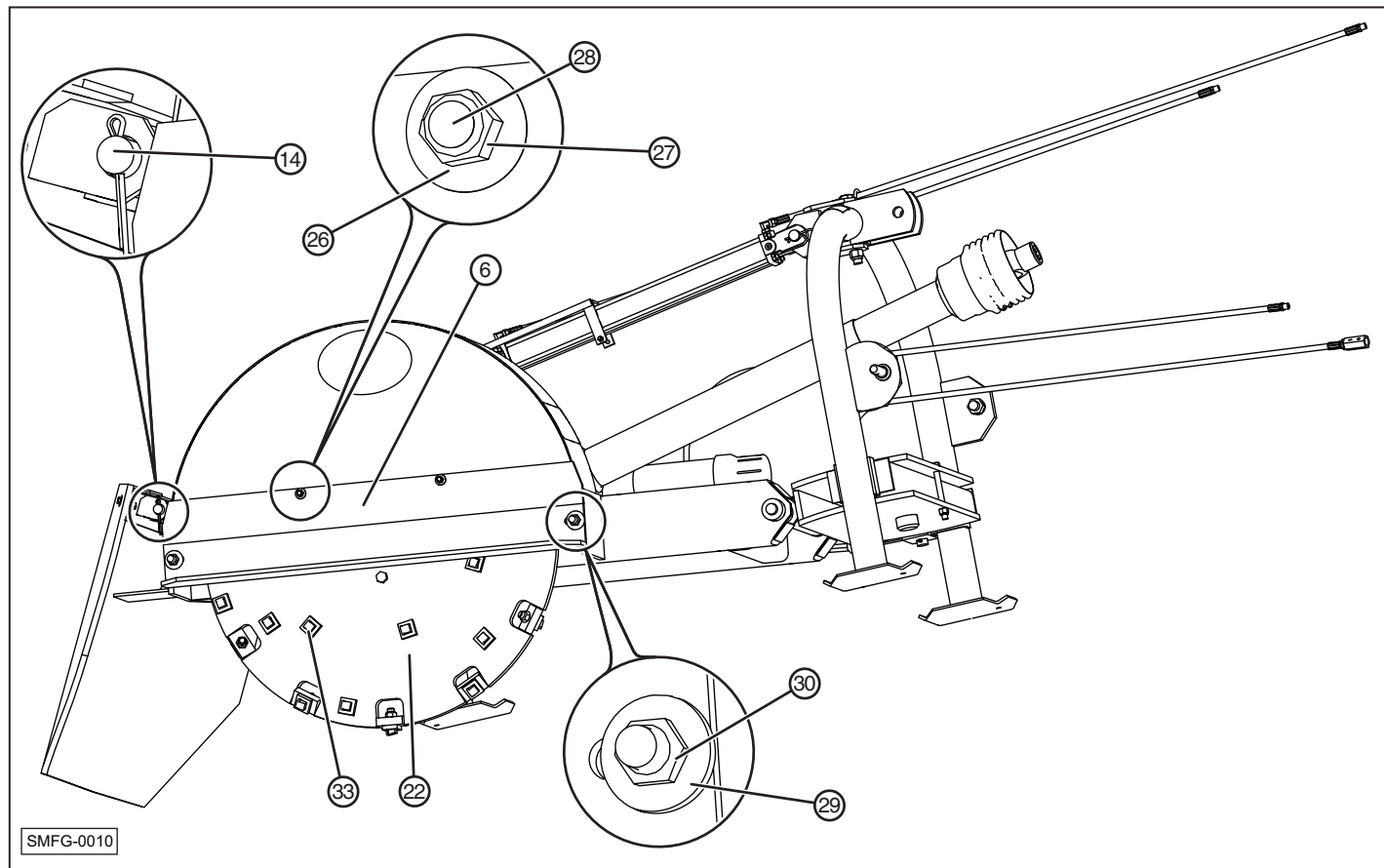
Item	Qty.	Part No.	Description
19	1	SC-50-622	Top Cylinder Complete
21	2	SC-50-83A	Tractor Attach Pin Cat II
24	1	SC-50OPMAN	Stumpbuster Operator Manual
25	2	SM-1256	Grease Zerk 5/16
34	1	MS-504-G	Decal, Depth Gauge
36	6	300178	Flatwasher 3/8
37	3	300181	Locknut 3/8
39	6	300184	Screw, Cap 3/8 x 1-1/2 HH
40	1	SC-50-14	Fitting, Restrictor
41	1	300240	Bushing, Reducer 1/2" x 1/4"
42	1	SC-50-12	Hose, 1/4" x 5'

SC-50 Main Assembly (continued)



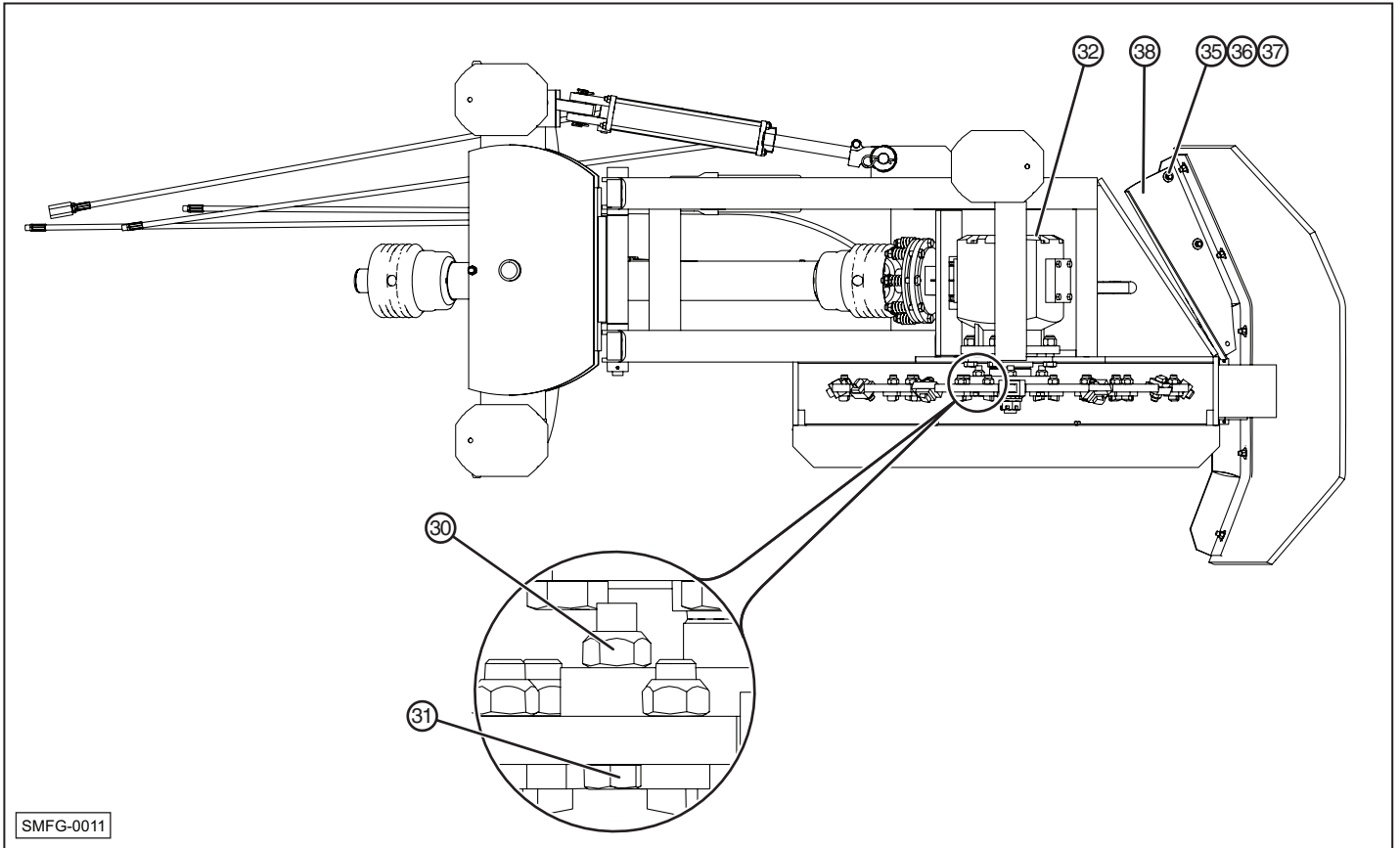
Item	Qty.	Part No.	Description
3	1	SC-101	PTO Shaft SC-50
4	1	SC-102	Slip Clutch
17	1	SC-50-40	Debris Guard Complete
18	1	SM-1256	Grease Zerk 5/16
20	2	SC-50-83	Tractor Attach Pin Cat I
23	1	SC-50-93	Lynch Pin 3/8 X 2-3/4

SC-50 Main Assembly (continued)



Item	Qty.	Part No.	Description
6	1	SC-104	Bottom Guard Assy
14	1	SC-50-2U3	Flap Holder Pin
22	1	SC-50-9	Cutting Wheel w/Teeth
26	2	300178	Flatwasher 3/8
27	2	300181	Cone Nut 3/8
28	2	300189	Tap Bolt - 3/8 X 1
29	2	300213	Flat Washer 5/8
30	6	300214	Locknut 5/8
33	25	SC-50-15	Cutting Teeth, Carbide

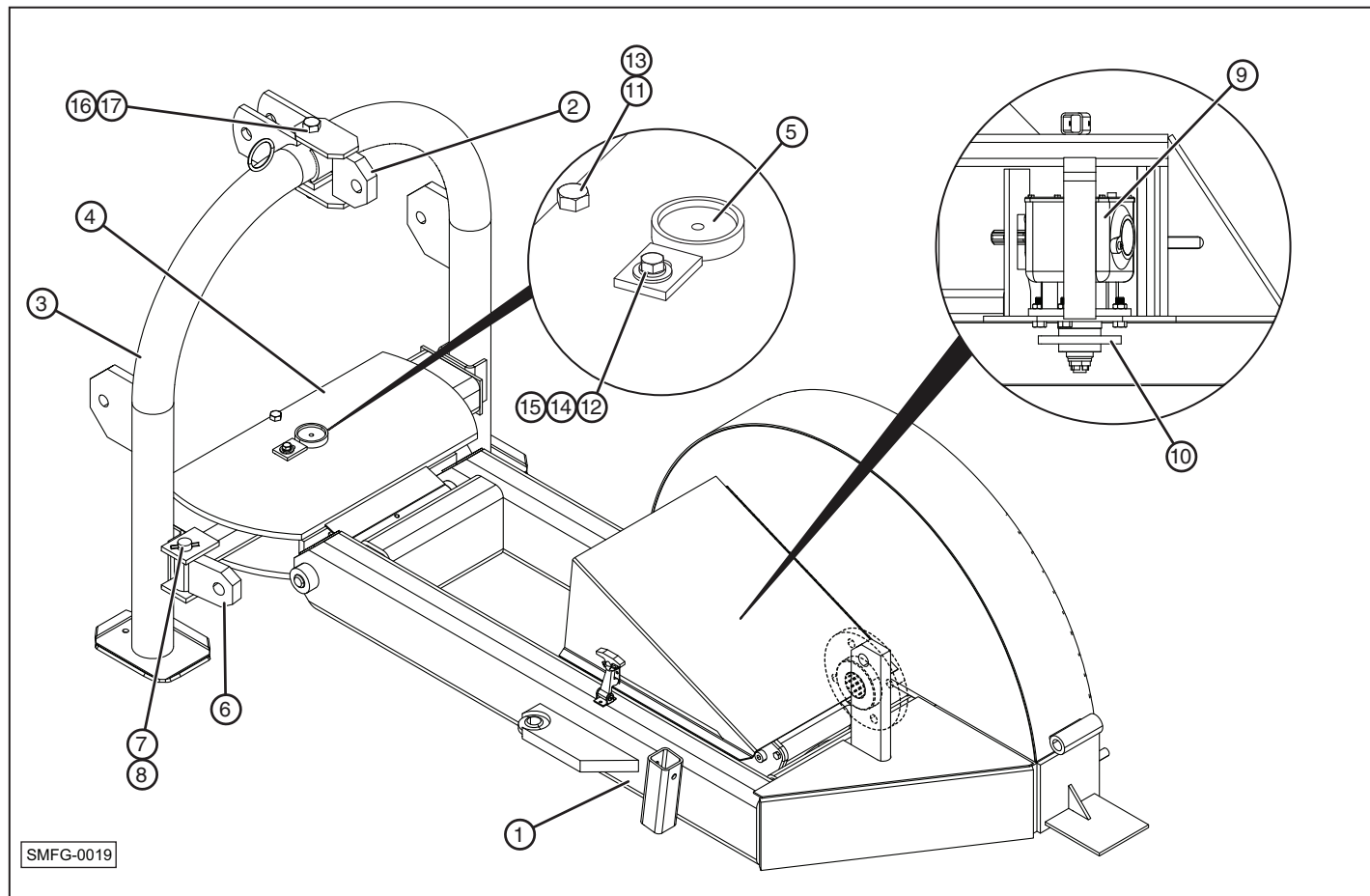
SC-50 Main Assembly (continued)



SMFG-0011

Item	Qty.	Part No.	Description
30	6	300214	Locknut 5/8
31	4	300220	Cap Screw 5/8 X 2-1/2 HH
32	1	SC-115	Gear Box, Complete
35	3	300189	Bolt, Tap 3/8" x 1
36	6	300178	Flatwasher 3/8
37	3	300181	Locknut 3/8
38	1	SC-50-40A	Shield, Debris

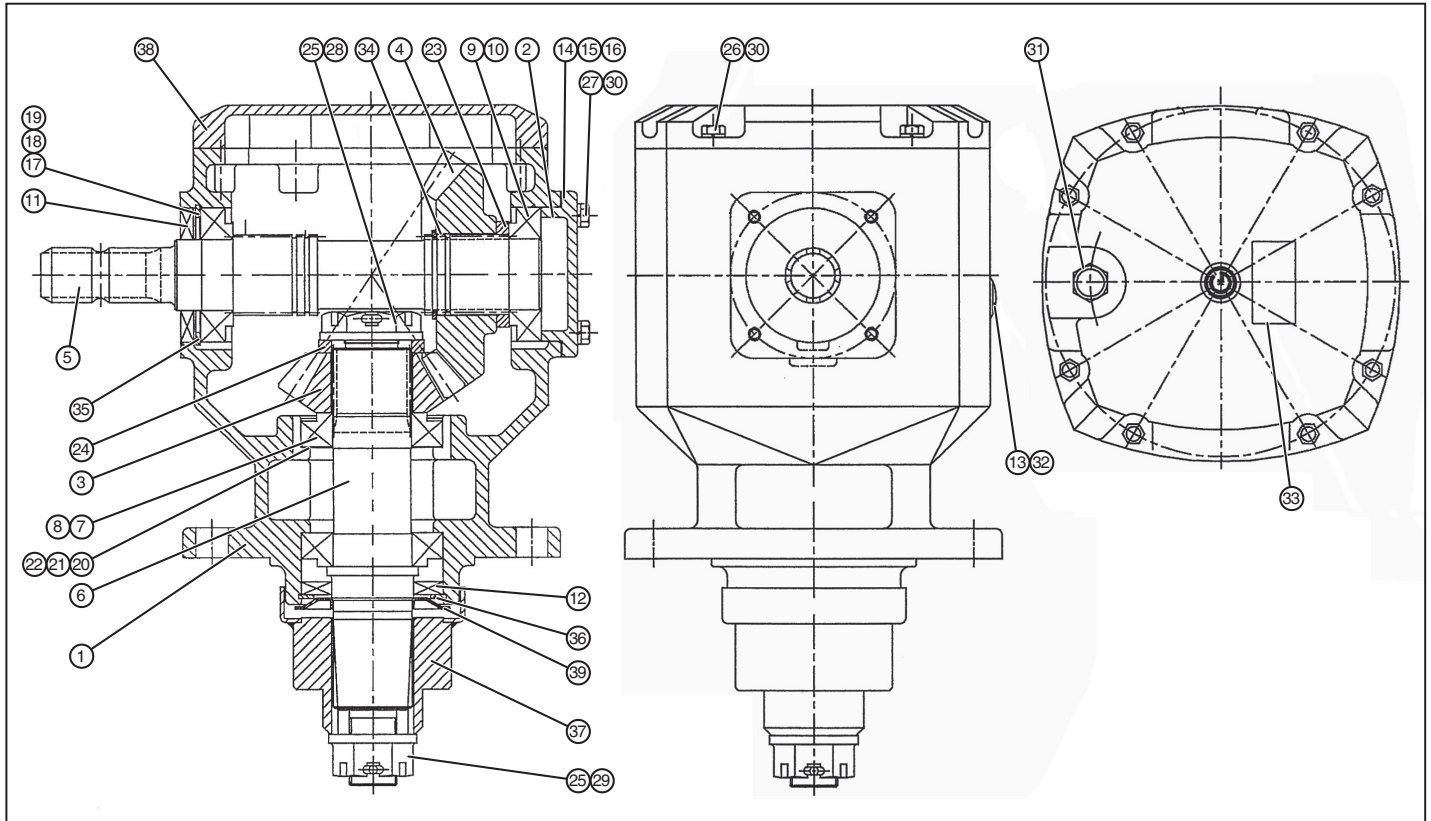
SC-50 Frame Assembly (continued)



Item	Qty.	Part No.	Description
1	1	SC-50-2	Cutter Frame
2	1	SC-50-62D	Top Cylinder Swivel, Complete
3	1	SC-50-8	3 Point Attachment Bracket
4	1	SC-50-70	Swivel Assembly
5	1	SC-50-72	Swivel, 3 Point Pin with Pin
6	1	SC-50-61-E	Side Cylinder Swivel Attachment Bracket
7	2	SC-50-39D1	Swivel Pin Only
8	2	300109	Roll Pin 1/4 x 2"
9	1	SC-50-5	Gearbox W/Bolts

Item	Qty.	Part No.	Description
10	1	SC-50-53	Gearbox Hub/Wheel Attachment
11	1	300124	Nylon, Locknut 1/2-13
12	4	300189	Bolt, Tap, 3/8-16 x 1"
13	1	300139	Cap Screw, 1/2-13 x 5" Hex Head
14	1	300178	Flat Washer, 3/8"
15	1	300182	Lock Washer, 3/8"
16	1	300177	Cap Screw, 3/4-10 x 6" Hex Head
17	1	300167	Nylon, Locknut 3/4-10

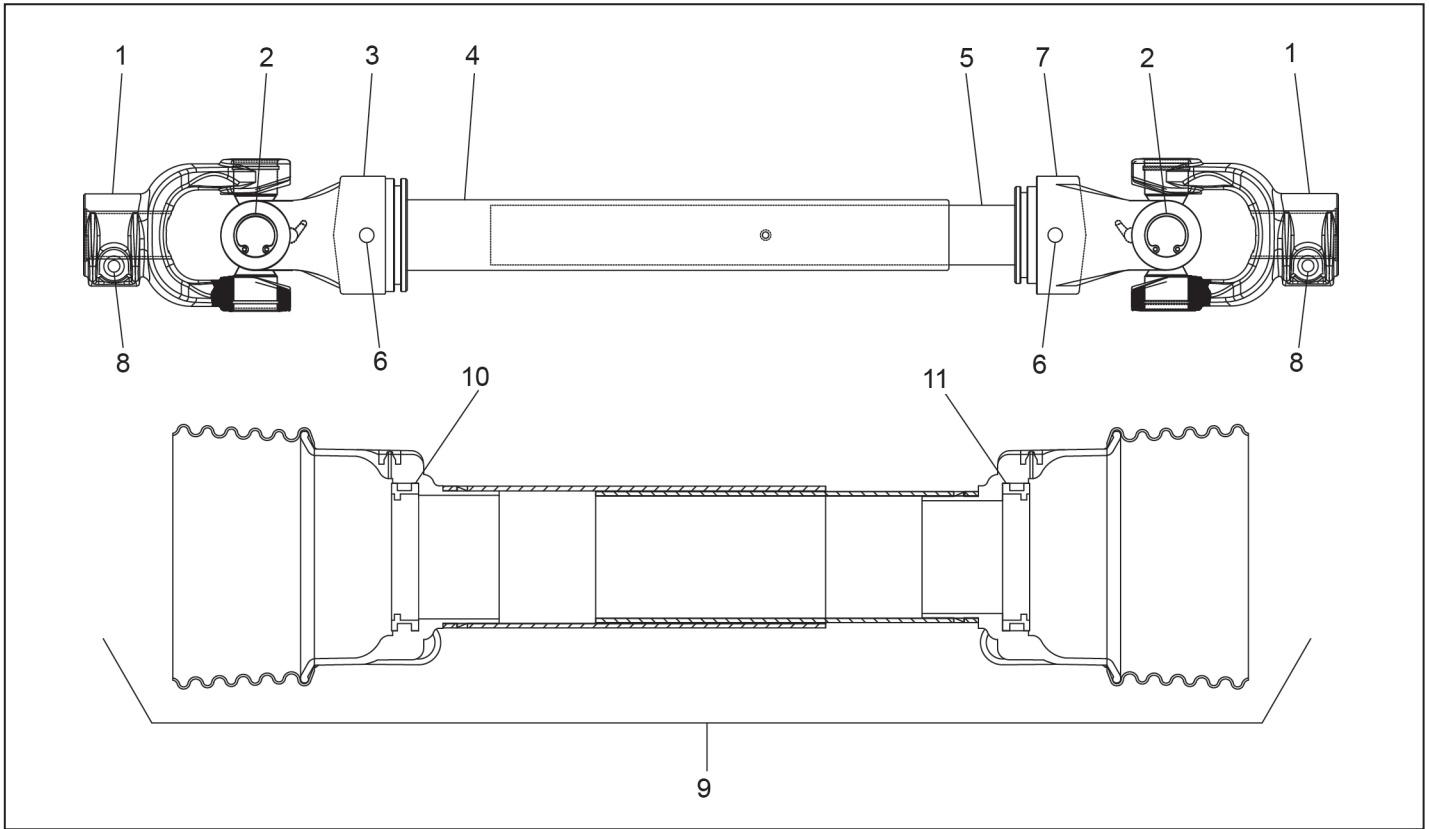
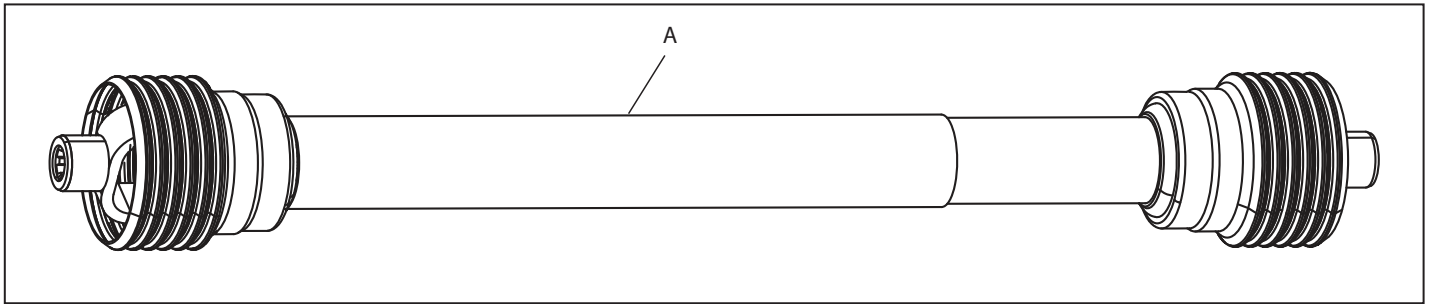
SC-50 Gearbox Assembly



Item	Qty.	Part No.	Description
1	1	010319	Housing, RC-100 Series
2	1	020371	Cap, Blank
3	1	030896	Pinion, 13T
4	1	030897	Gear, 19T
5	1	040763	Shaft, Input
6	1	040763	Shaft, Output
7	2	050200	Bearing, Cup 30210
8	2	050201	Bearing, Cone 30210
9	2	050239	Bearing, Cup 30209
10	2	050240	Bearing, Cone 30209
11	1	060168	Seal, Input
12	1	060243	Seal, Output
13	1	060251	O-ring
14	1	070349	Gasket, 0.2mm
15	1	070350	Gasket, 0.3mm
16	1	070351	Gasket, 0.5mm
17	1	090299	Shim, Input 0.1mm
18	1	090300	Shim, Input 0.2mm
19	1	090301	Shim, Input 0.5mm
20	1	090145	Shim, Output 0.1mm

Item	Qty.	Part No.	Description
21	1	090146	Shim, Output 0.2mm
22	1	090147	Shim, Output 0.5mm
23	1	090417	Spacer
24	1	090418	Spacer
25	2	100118	Pin, Cotter
26	8	110106	Screw, Hex Cap, M8-1.25x25
27	4	110222	Screw, Hex Cap, M8-1.25x30
28	1	120094	Nut, Hex Slotted, 3/8"-18
29	1	120141	Nut, Hex Slotted, W30x2-6H
30	12	130058	Lockwasher
31	1	140033	Plug, Pressure Relief, 1/2"-14NPT
32	1	140097	Oil Sight Gauge A10
33	1	190028	I.D. Tag
34	1	200003	Ring-Ret, External
35	1	200159	Ring-Ret, Internal 85
36	1	200151	Ring-Ret, Internal 90
37	1	210032	Blade, Hub
38	1	240427	Cover-Inspection
39	1	240428	Protector, Seal

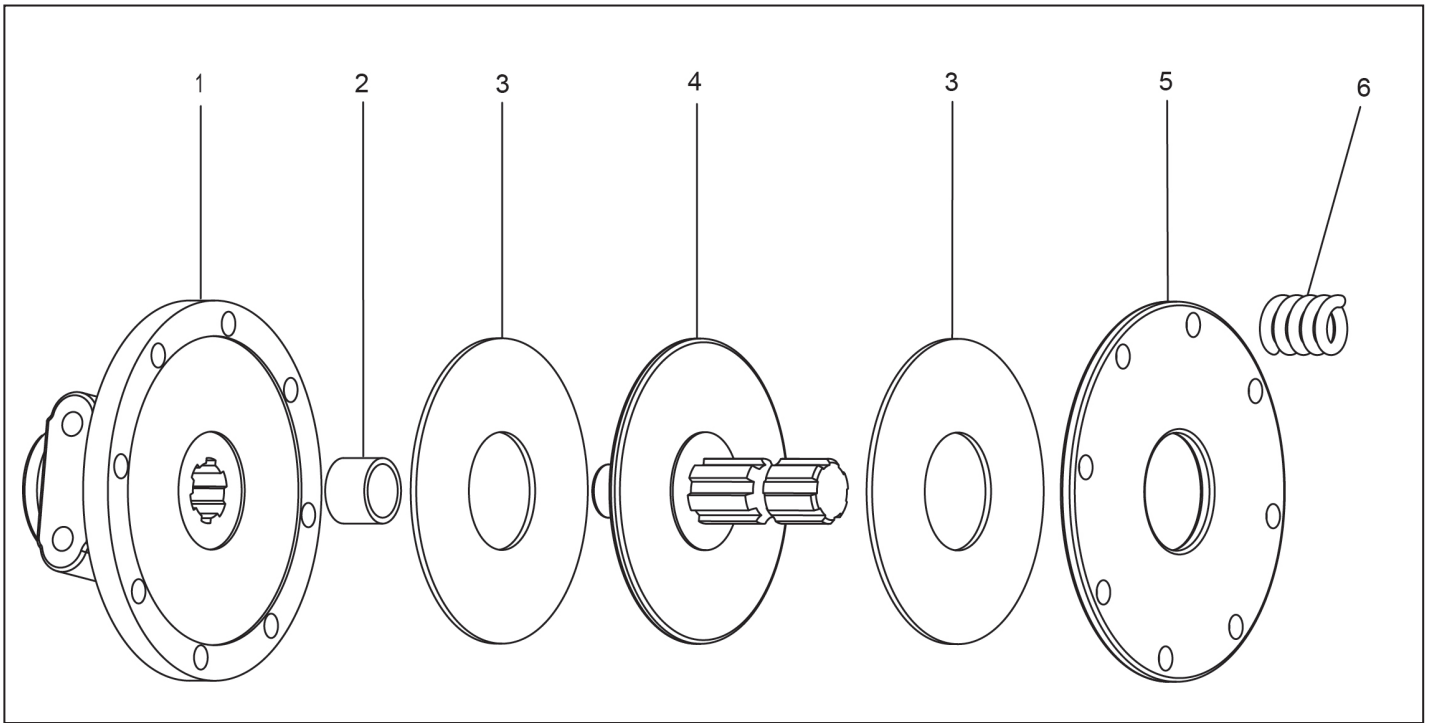
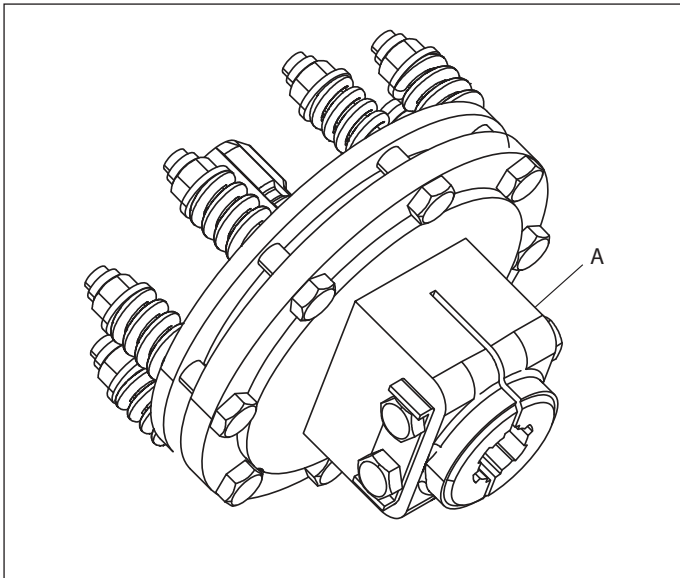
SC-50 Driveline Assembly



Item	Qty.	Part No.	Description
A	1	SC-101	Complete Drive Assembly Less Slip Clutch (S/N 1229940 and after)
1	2	A622138	Quick Release Yoke, 1-3/8" - 6 Spline
2	2	A622	Cross Bearing
3	1	A6254	Outer Tube Yoke
4	1	A544	Outer Drive Tube
5	1	A454	Inner Drive Tube
6	2	A1065	Roll Pin
7	1	A6245	Inner Tube Yoke
8	2	AB121	Quick Release Button
9	1	AS30090	Safety Guard, Complete With Bearings
10	1	AS301	Release Lever Kit
11	1	ASB3	Bearing Kit

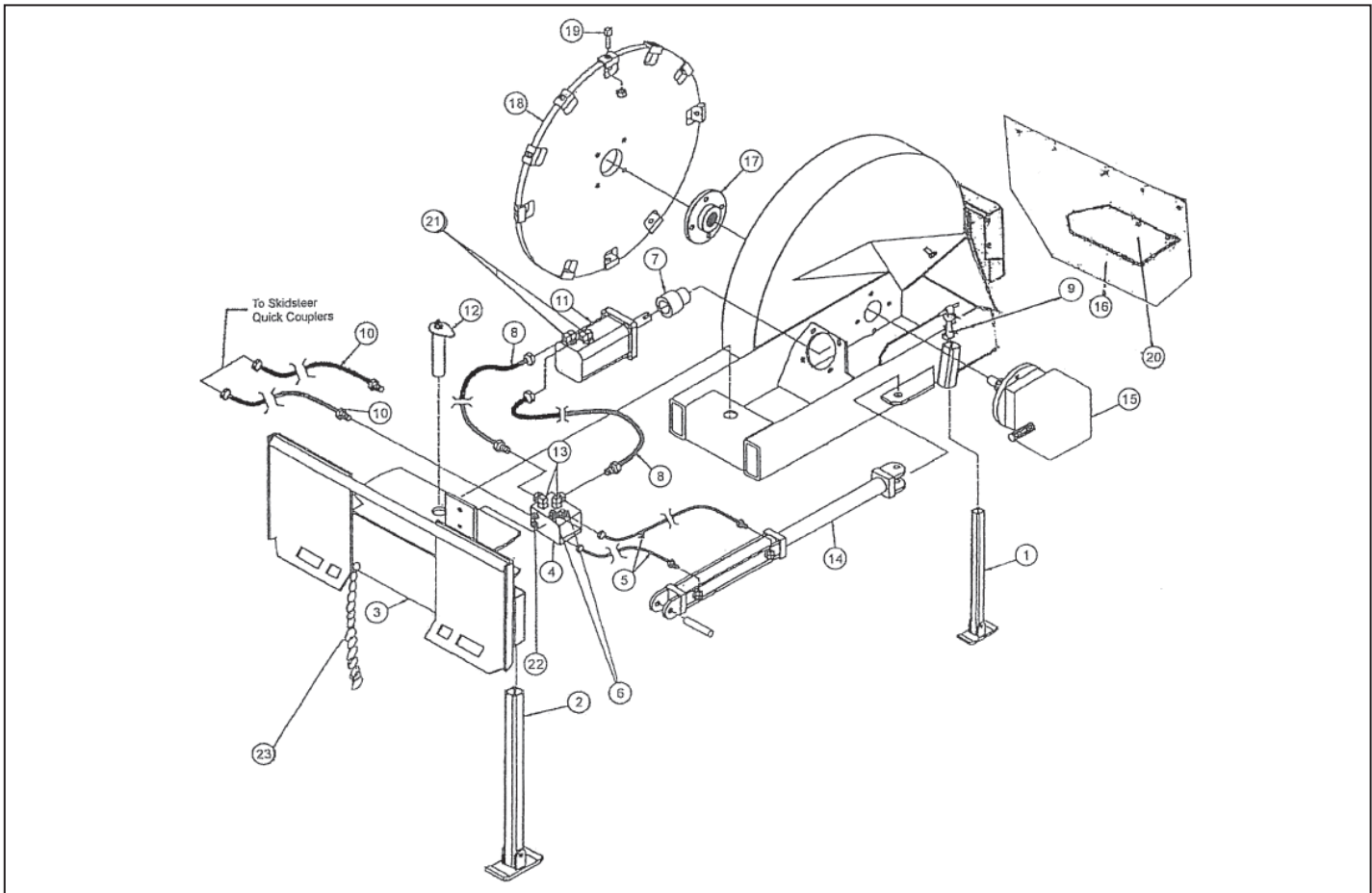
NSS - Not Serviced Separately

SC-50 Slip Clutch Assembly



Item	Qty.	Part No.	Description
A	1	SC-102	Complete Slip Clutch Assembly
1	1	B3720	1 3/8" X 6 Spline Base Assembly (includes bushing)
2	1	B4172	Bushing 1 1/8" ID
3	2	B3721	Friction Disc 6 1/2"OD x 2 1/2"ID
4	1	B3722	1 3/8" x 6 Spline Drive Plate 6 1/2"OD- 1 1/8" Dia. Spigot
5	1	B4155	Outer Pressure Plate
6	8	B3729	Spring

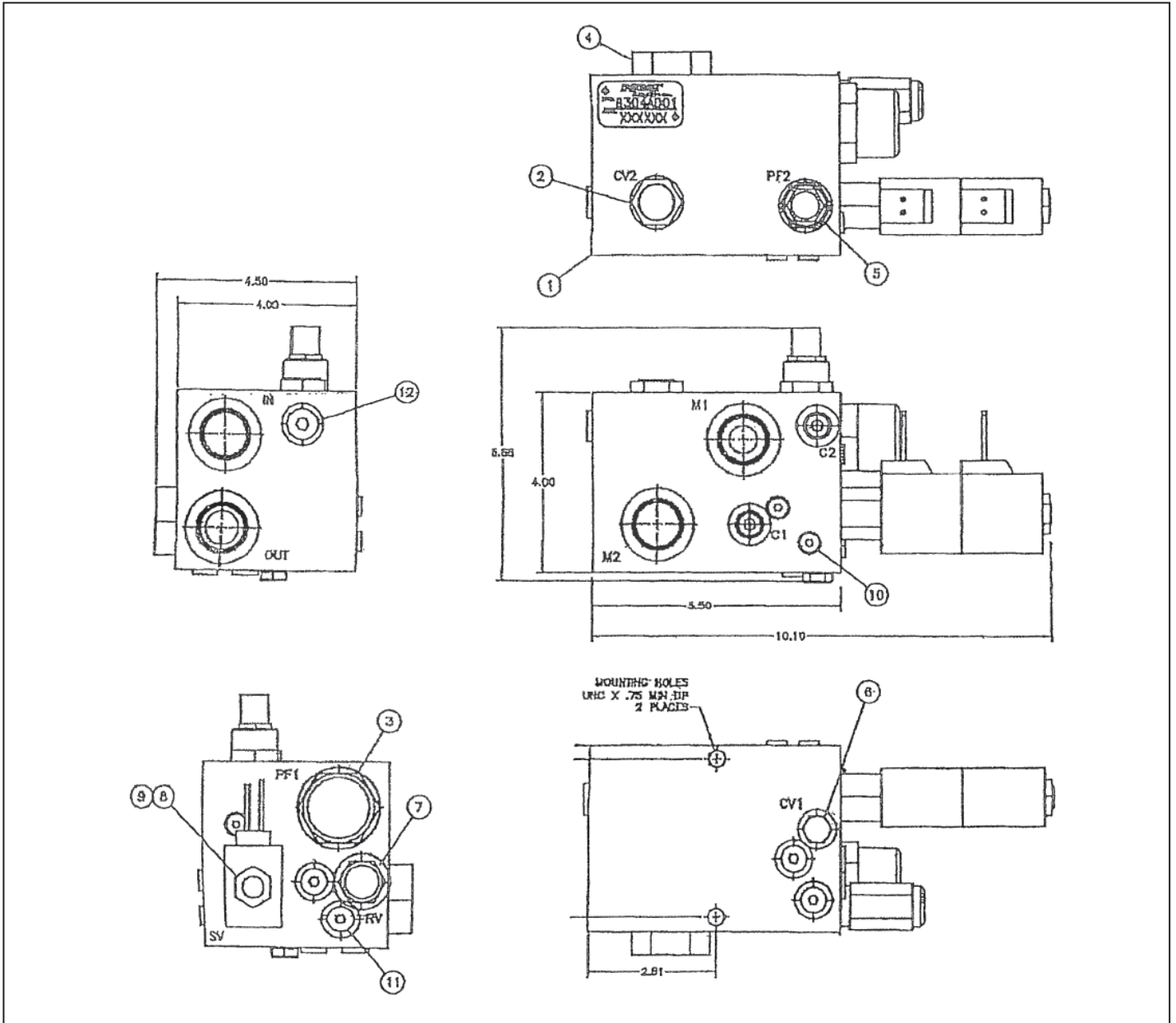
SC-50-H Stumpbuster



Item	Part No.	Description
1	SC-50-27	Jack Stand Leg
2	SC-50-H37	Stabilizer Leg (Cutter)
3	SC-50-H3	Skid Loader Bracket (Cutter)
4	SC-50-H6	Valve Complete
5	SC-50-H41	Cylinder Hose
6	SC-50-131	9/16" Oring x 90 Elbow
7	SC-50-H7	Gearbox to Motor Coupler
8	SC-50-H64	Pressure Hose (3/4" x 21")
9	SC-50-3A3	Rubber Strap
10	SC-50-H65	Pressure Hose (3/4" x 36")
11	SC-50-H5	Hydraulic Motor Complete
12	SC-50-H31	Swivel Plate Pin
13	SC-50-H52	Valve Fitting

Item	Part No.	Description
14	SC-50-61	Side Cylinder Complete
15	SC-115	Gearbox Complete
16	SC-50-3	Safety Shield with Bolts
17	SC-50-53	Gearbox Hub to Wheel Attachment
18	SC-50-9 SC-50-91A	Cutting Wheel with Teeth Cutting Wheel less Teeth
19	SC-50-15	Carbide Tooth
20	SC-50-40	Debris Guard Complete
21	SC-50-H54	Motor Fitting
22	SC-50-H53	Valve Fitting (1" x 3/4")
23	SC-50-H4	Lift Limit Chain
24	SM-0292-R2	Quick Coupler Set (not shown)

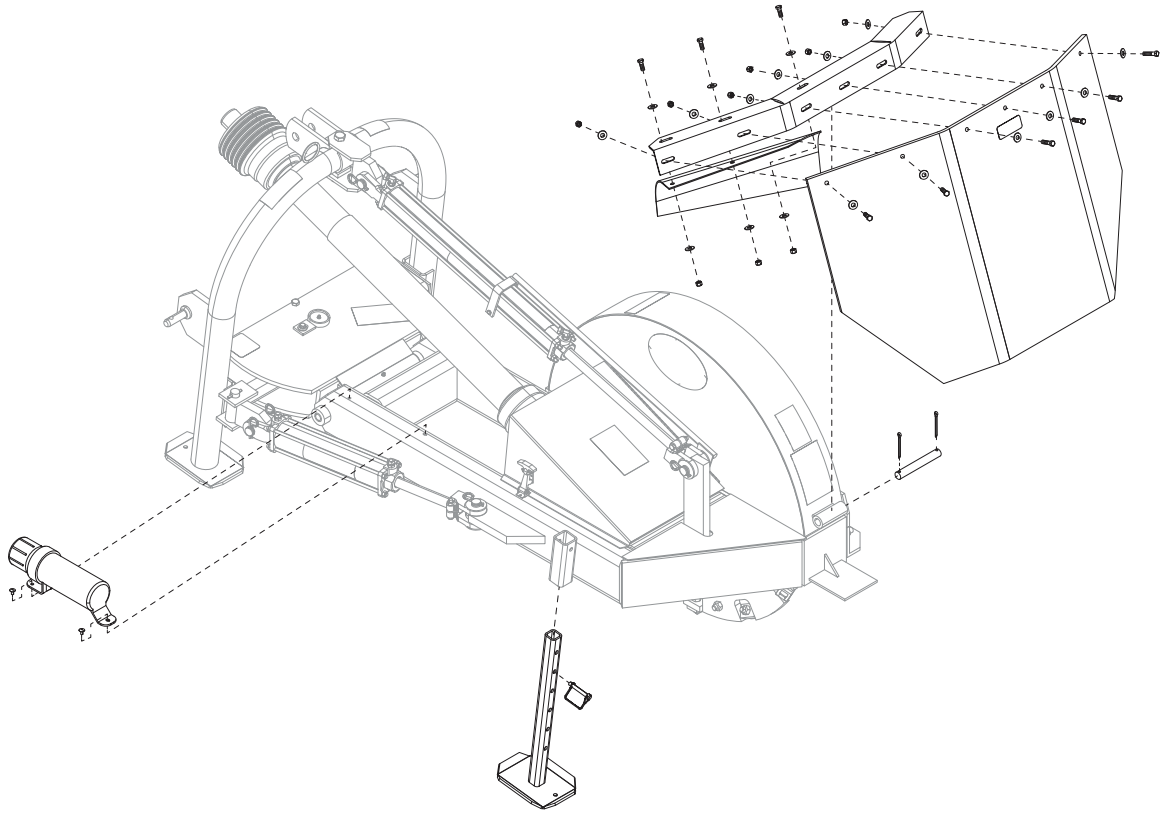
SC-50-H6 Valve Parts



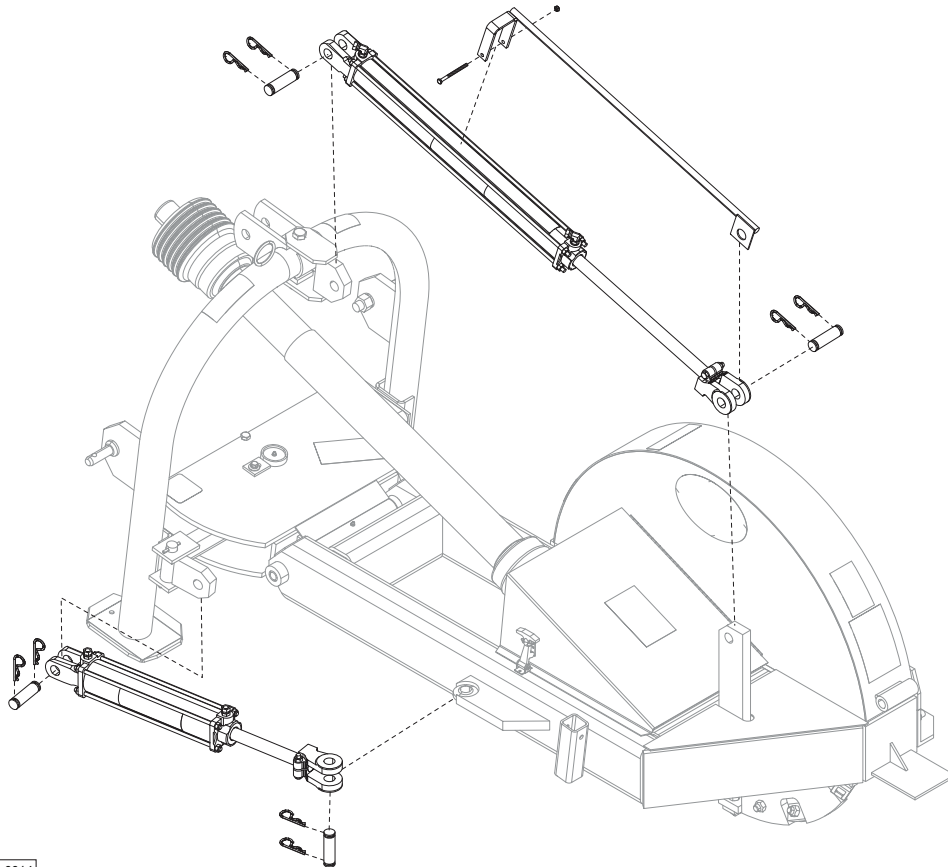
Item	Part No.	Description
1		Control Valve Body
2	SC-50-H614	Check Valve
3	SC-50-H615	Priority Flow Regulator
4	SC-50-H616	Check Valve
5	SC-50-H617	Priority Flow Regulator
6	SC-50-H618	Check Valve
7	SC-50-H618A	Relief Valve

Item	Part No.	Description
8	SC-50-H611	Directional Valve (4-way)
9	SC-50-H612	Valve Lead Wire Set
10	SC-50-H619	Hex Plug (1/8")
11	SC-50-H619A	Hex Plug (1/4")
12	SC-50-H619B	Hex Plug (3/8")
13	SC-50-H611	Cartridge
14	SC-50-H611A	Cartridge (9/2005 & Later)

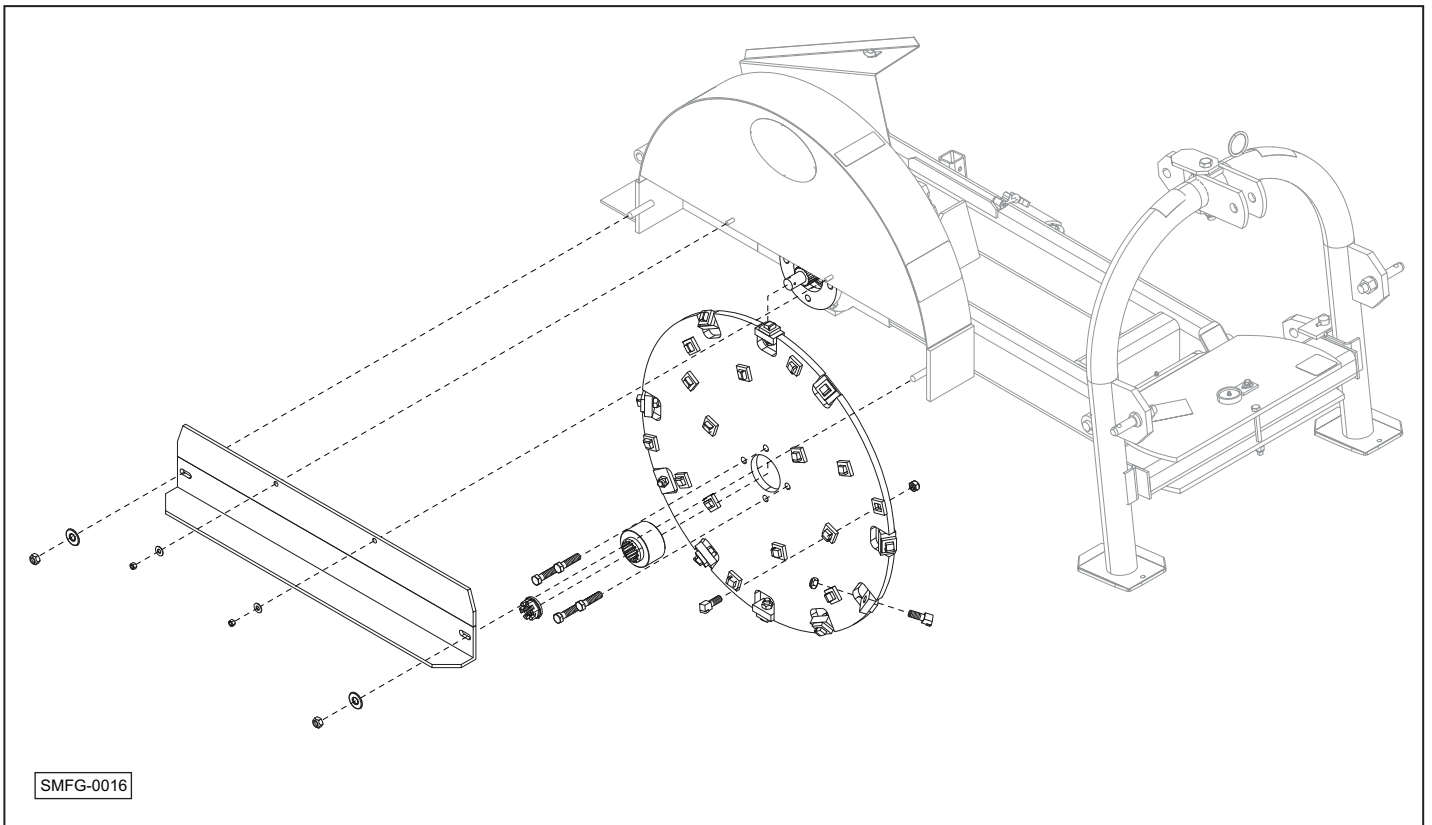
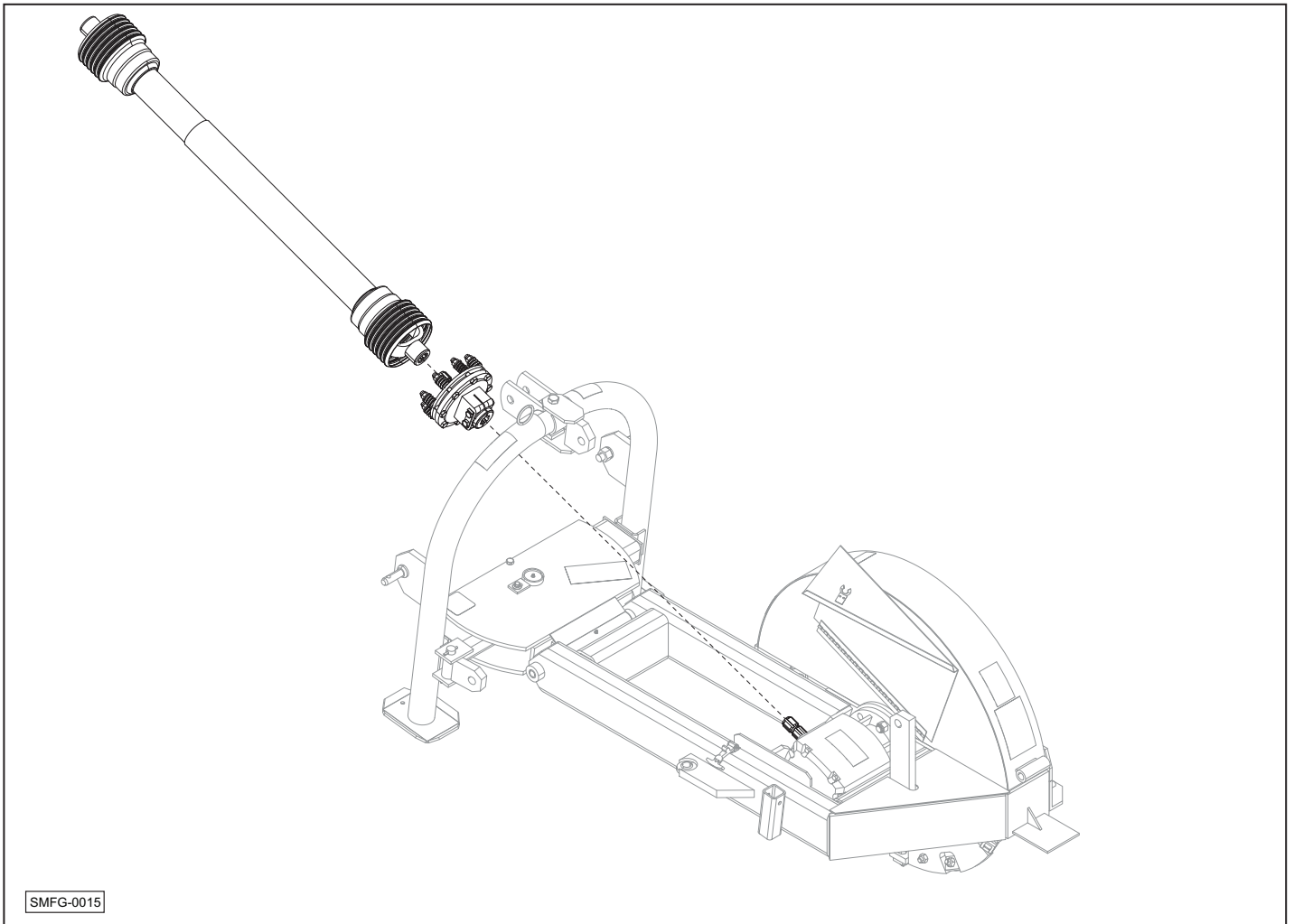
SC-50 Exploded View Illustrations



SMFG-0013

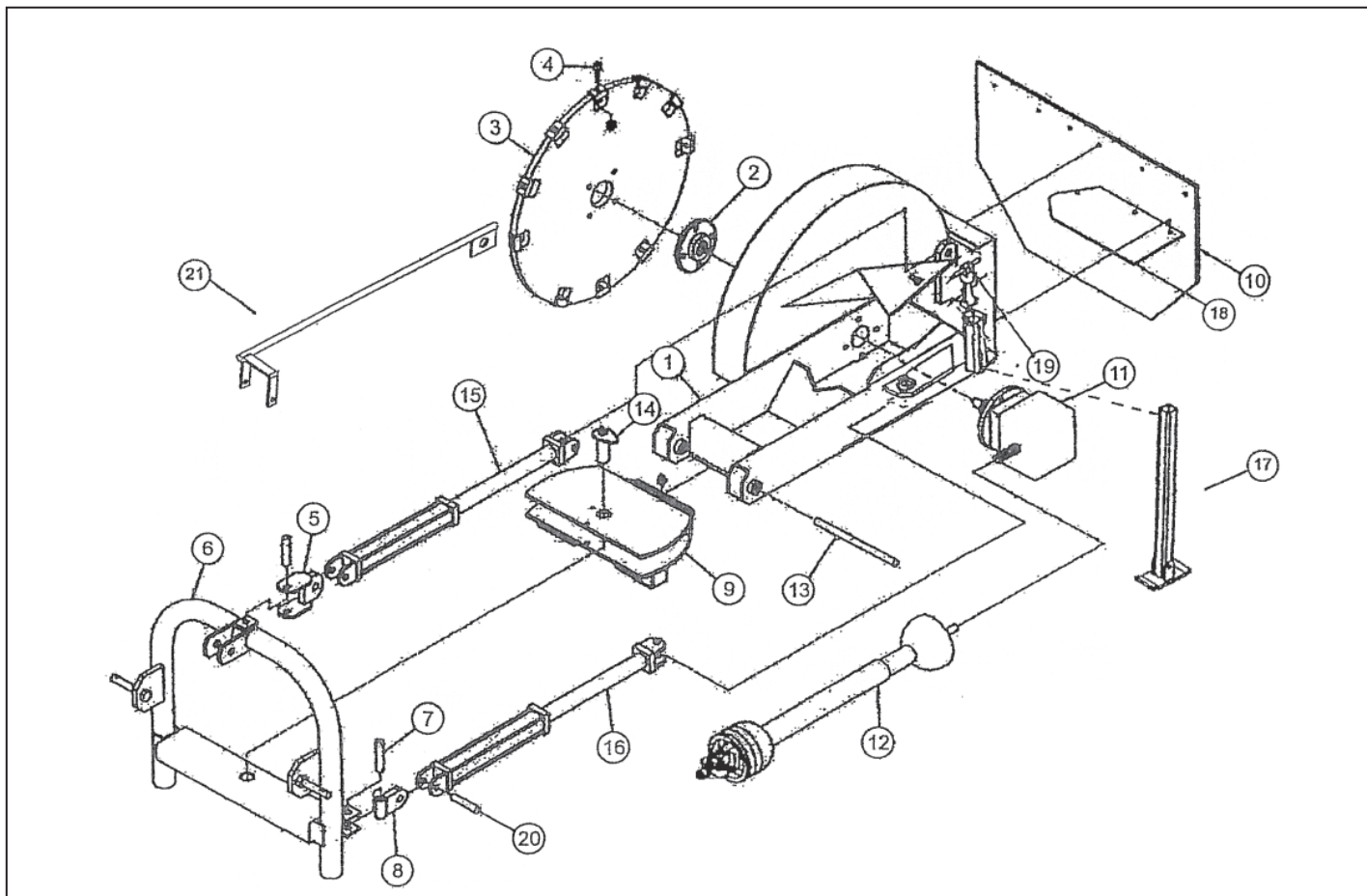


SMFG-0014



SC-25 and SC-25-H Stumpbuster

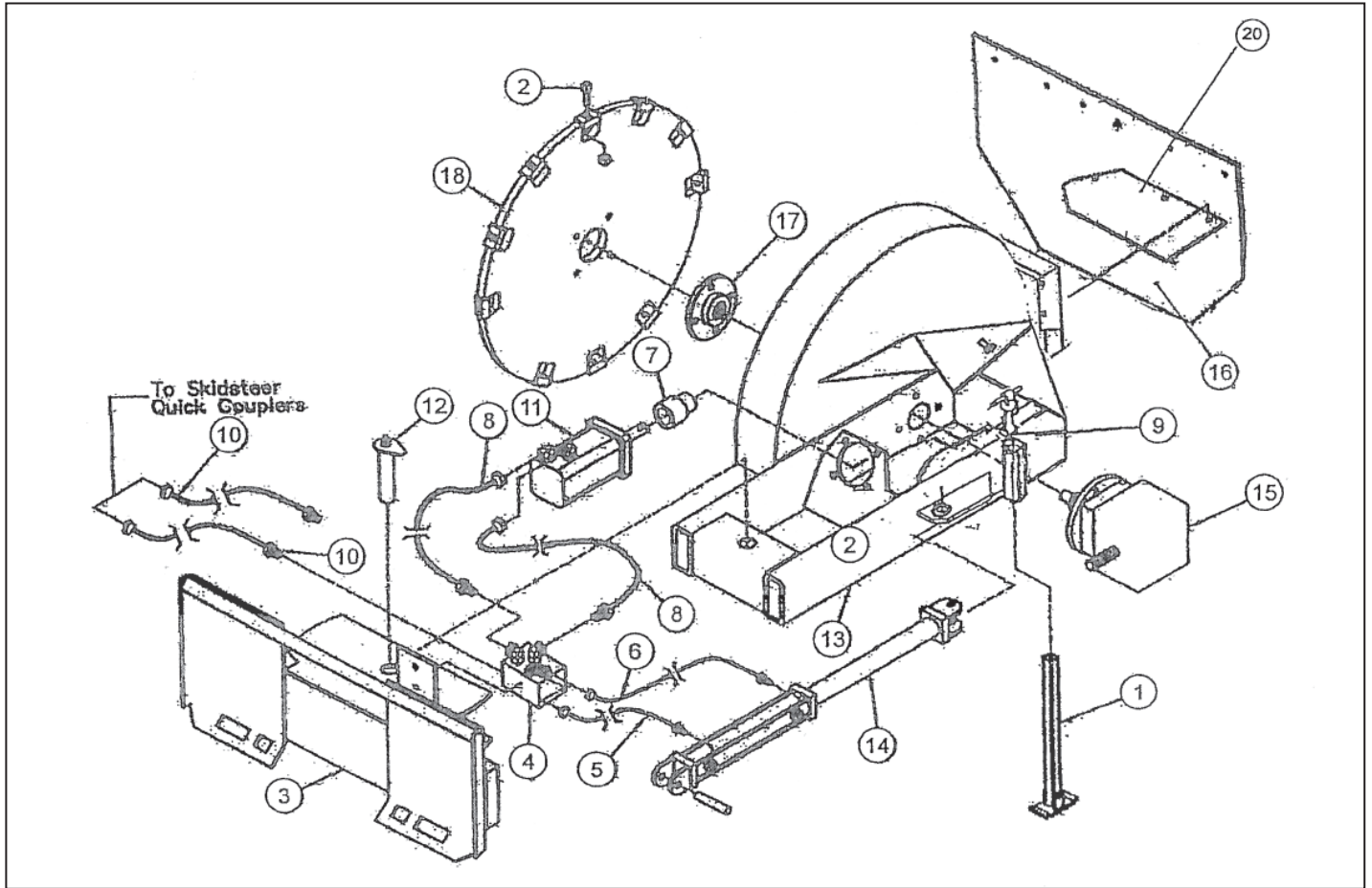
SC-25 3-Point Stumpbuster



Item	Part No.	Description
1	SC-50-73	Grease Zerk
2	SC-50-53 SC-50-54	Gearbox Hub to Wheel Attach Hub to Wheel Bolt & Locknut
3	SC-25-91A	Cutting Wheel less Teeth
4	SC-50-15	Carbide Teeth
5	SC-50-62D SC-50-81 SC-50-82a	Top Cylinder Swivel Attach. Top Cylinder / Swivel Bolt Top Cylinder / Swivel Nut
6	SC-25-8 SC-50-83	3-Pt. Attachment Bracket Tractor Attachment Pin (Cat. I)
7	SC-50-71	Side Cylinder / Swivel Pin
8	SC-50-61-E	Side Cylinder / Swivel Attach
9	SC-25-7 SC-50-74	Swivel Assembly Swivel Bolt & Locknut
10	SC-25-3 SC-50-32 SC-50-33 SC-50-34	Safety Shield w/ Bolts Safety Shield Bolt (1/4 x 1) Safety Shield Nut (1/4) Safety Shield Washer (1/4)

Item	Part No.	Description
11	SC-25-5 SC-50-52	Gearbox w/ Bolts Gearbox Bolt & Locknut
12	SC-25-4	PTO w/ Slip Clutch
13	SC-50-71	Swivel Assy. Pin
14	SC-50-72	Swivel / 3-Pt. Pin
15	SC-50-62 SC-50-621	Top Cylinder Complete Top Cylinder Pin
16	SC-50-61 SC-50-613	Side Cylinder Complete Side Cylinder Pin
17	SC-50-27	Jack Stand Leg w/ Linch Pin
18	SC-50-40A	Debris Shield
19	SC-50-3A3	Rubber Strap Assy.
20	SC-50-75	Swivel Ear Pin
21	SC-2550-DG	Depth Gauge

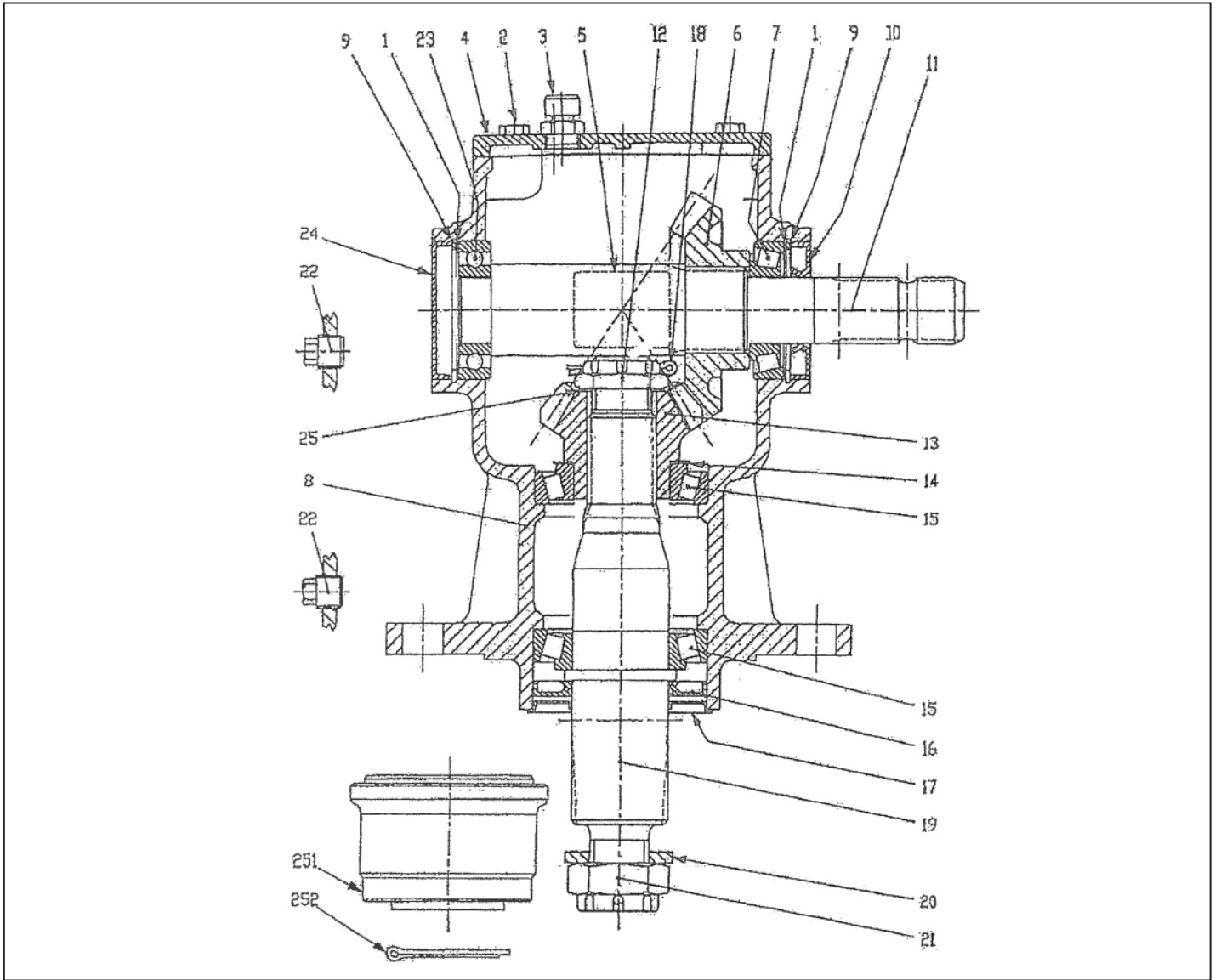
SC-25-H Stumpbuster



Item	Part No.	Description
1	SC-50-27	Jack Stand Leg
2	SC-50-15	Carbide Tooth
3	SC-50-H3	Skid Loader Bracket
4	SC-50-H6	Valve Complete
5	SC-50-H41	Cylinder Hose
6	SC-50-131	9/16" Oring x 90 Elbow
7	SC-25-H7	Gearbox to Motor Coupler
8	SC-50-H64	Pressure Hose (3/4" x 36")
9	SC-50-3A3	Rubber Strap
10	SC-50-H65	Pressure Hose (3/4" x 43")
11	SC-25-H5	Hydraulic Motor Complete
12	SC-50-H31	Swivel Plate Pin
13	SC-50-H52	Valve Fitting

Item	Part No.	Description
14	SC-50-61	Side Cylinder Complete
15	SC-25-5	Gearbox Complete
16	SC-25-3	Safety Shield with Bolts
17	SC-50-53	Gearbox Hub to Wheel Attachment
18	SC-25-9 SC-25-91A	Cutting Wheel with Teeth Cutting Wheel less Teeth
19	SM-0292-R2	Quick Coupler Set (Not Shown)
20	SC-50-40	Debris Guard Complete
21	SC-50-H54	Motor Fitting
22	SC-50-H53	Valve Fitting (1" x 3/4")
23	SC-50-H4	Lift Limit Chain (Not Shown)

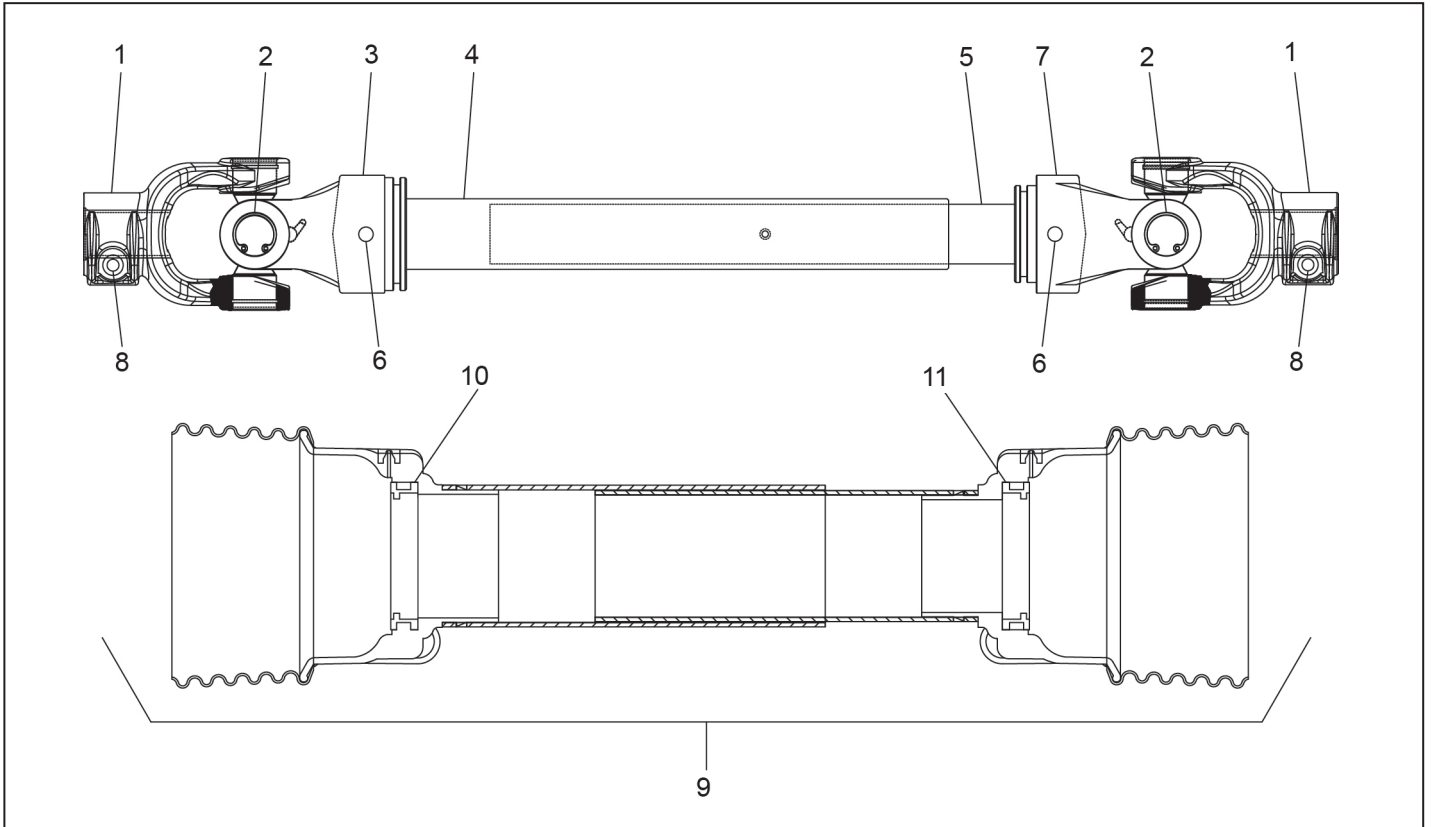
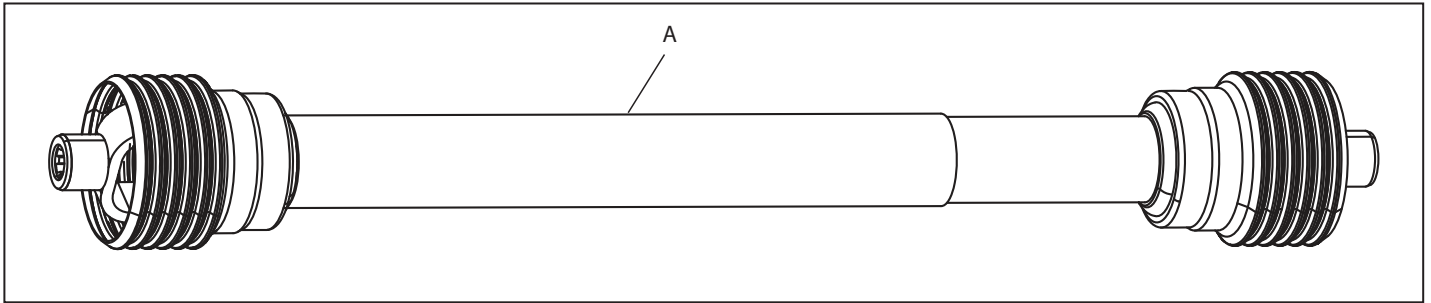
SC-25-5 Gearbox Parts



Item	Qty.	Part No.	Description
1	2	SC-25-5H	Shim Kit
2	4	SC-25-5B1	Bolt
3	1	SC-25-5B2	Vent Plug 1/2" Gas
4	1	SC-25-5B3	Cover
5	1	SC-50-5B4	Plate
6	1	SC-25-5C	Crown
7	1	SC-25-5D	Bearing 30207
8	1	SC-25-5B	Casting
9	2	SC-25-5J	Snap Ring For Holes
10	1	SC-25-5E	Oil Seal 35x72x10
11	1	SC-25-5F	Input Shaft
12	1	SC-25-5N	Castle Nut
13	1	SC-25-5V	Pinion
14	1	SC-25-5L	Shim

Item	Qty.	Part No.	Description
15	2	SC-50-5T	Bearing
16	1	SC-25-5R	Oil Seal 50x90x10
17	1	SC-25-5M	Screen Protection
18	1	SC-25-5W	Cotter Pin
19	1	SC-25-5U	Output Shaft
20	1	SC-25-5Q	Flat Washer
21	1	SC-25-SN1	Castle Nut
22	2	SC-50-5Y	Plug 3/8" Gas
23	1	SC-25-5D1	Bearing
24	1	SC-25-5R1	Oil Seal 72x10
25	1	SC-25-5X	Shim
251	1	SC-50-53A	Hub
252	1	SC-25-5B7	Cotter Pin

SC-25-4 PTO Shaft Parts



Item	Qty.	Part No.	Description
A	1	SC-101	Complete Drive Assembly Less Slip Clutch (S/N 1229940 and after)
1	2	A622138	Quick Release Yoke, 1-3/8" - 6 Spline
2	2	A622	Cross Bearing
3	1	A6254	Outer Tube Yoke
4	1	A544	Outer Drive Tube
5	1	A454	Inner Drive Tube
6	2	A1065	Roll Pin
7	1	A6245	Inner Tube Yoke
8	2	AB121	Quick Release Button
9	1	AS20090	Safety Guard, Complete With Bearings
10	1	AS301	Release Lever Kit
11	1	ASB3	Bearing Kit

NSS - Not Serviced Separately

Warranty

Limited Warranty

Shaver Manufacturing Company, LLC warrants each new Shaver product to be free from defects in material and workmanship. This warranty is applicable only for the normal service life expectancy of the product or components, not to exceed 12 consecutive months from the date of delivery of the new Shaver product to the original purchaser.

Genuine Shaver replacement parts and components will be warranted for 90 days from the date of purchase, or the remainder of the original equipment warranty period, whichever is longer.

Under no circumstances will it cover any merchandise or components thereof, which, in the opinion of the company, have been subjected to misuse, unauthorized modification, alteration, an accident, or if a repair has been made with parts other than those obtainable through Shaver.

Our obligation under this warranty shall be limited to repairing or replacing any part that, in our judgment, shall show evidence of such defect, provided further that such part shall be returned within thirty (30) days from the date of failure to Shaver, routed through the dealer and distributor from whom the purchase was made, transportation charges prepaid. These are the items that must be returned: gearboxes, valves, base plates, PTO shafts, boom, arch, whole good (ex: driver, stumpbuster), motors, driver cylinders, and short channels. If you are uncertain what to return, please call Shaver. Provide pictures if you are unable to return parts. Include pictures of the serial number of the unit and a copy of the invoice for date-of-purchase proof. All returned items must have an RGA number. Contact Shaver at 712-859-3293 to get authorization to return, file your warranty claim and, if needed, an RGA will be provided.

This warranty shall not be interpreted to render Shaver liable for injury or damages of any kind or nature to person or property. This warranty does not extend to the loss of crops, loss because of delay in harvesting, or any expense or loss incurred for labor, substitute machinery, rental, or for any other reason.

Except as set forth above, Shaver shall have no obligation or liability of any kind on account of any of its equipment and shall not be liable for special or consequential damages. Shaver makes no other warranty, expressed or implied, and specifically, Shaver disclaims any implied warranty of merchantability or fitness for a particular purpose. Some states or provinces do not permit limitations or exclusions of implied warranties or incidental or consequential damages, so the limitations or exclusion in this warranty may not apply.

This warranty is subject to any existing conditions of supply which may directly affect our ability to obtain materials or manufacture replacement parts.

Shaver reserves the right to make improvements in design or changes in specifications at any time, without incurring any obligation to owners of units previously sold.

No one is authorized to alter, modify, or enlarge this warranty, nor the exclusion, limitations, and reservations.

Shaver Manufacturing Co., LLC.
103 South Washington Avenue
P.O. Box 358
Graettinger, IA 51342

Phone: (712) 859-3293
Fax: (712) 859-3294

sales@shavermfg.com
www.shavermfg.com

