



PARTS MANUAL

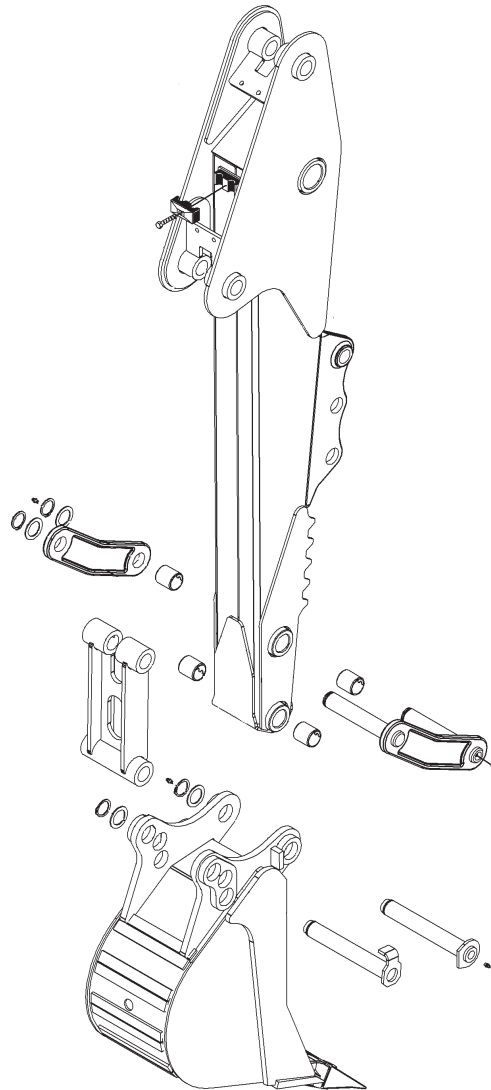
6100 & 6120 BACKHOES



PALADIN
LIGHT CONSTRUCTION GROUP



The Power of Combined Excellence



SERIAL NUMBER: _____

MODEL NUMBER: _____

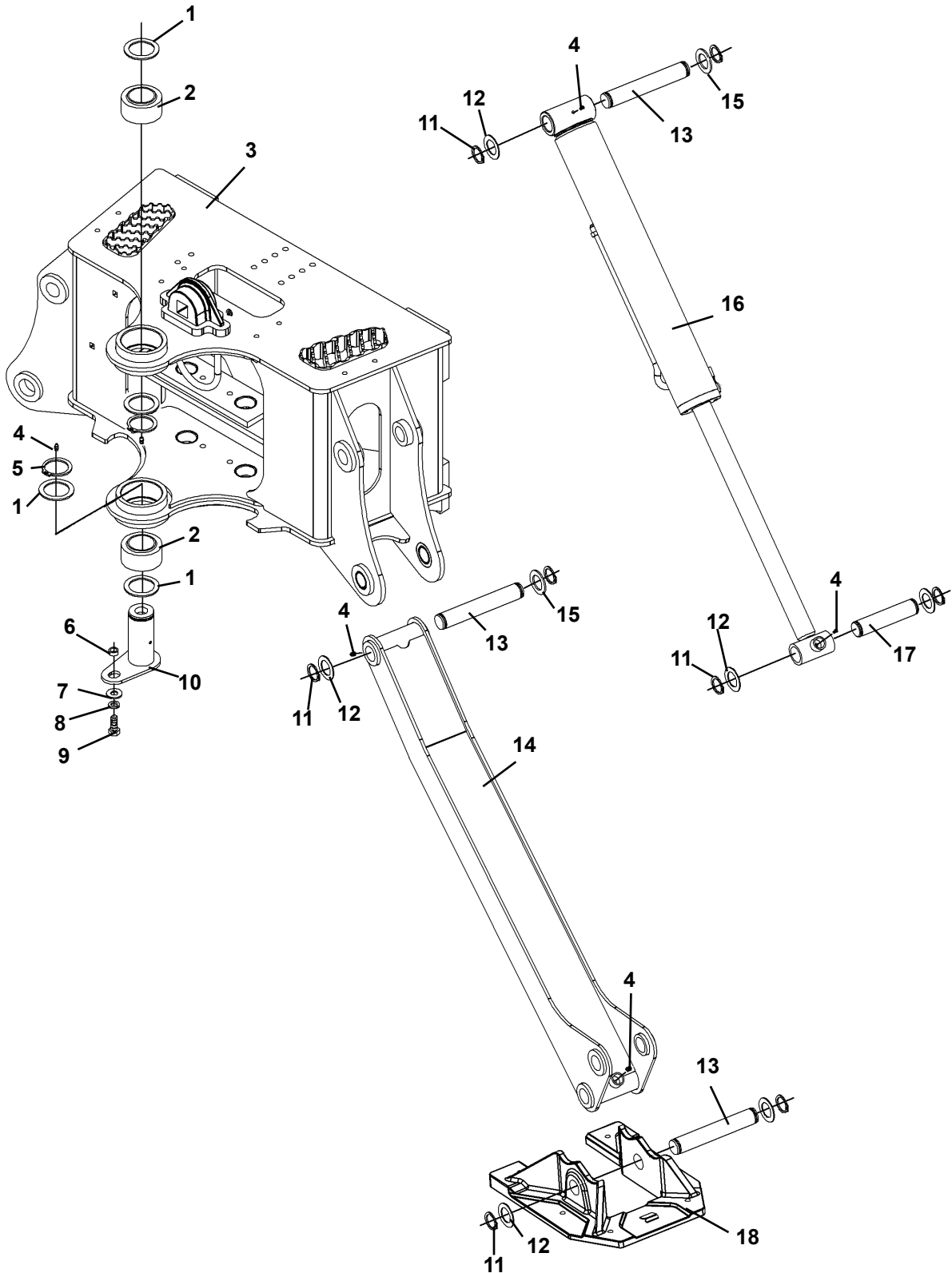
Manual Number: PM729
Part Number: 75629
Rev. 2

TABLE OF CONTENTS

MAINFRAME ASSEMBLY #109320	2-7
MAINFRAME	
SWING POST	
SWING CYLINDERS	
6100 BOOM AND DIPPER ASSEMBLY #110321	8-11
BOOM ASSEMBLY	
DIPPER ASSEMBLY	
6120 BOOM AND DIPPER ASSEMBLY #109321	12-15
BOOM ASSEMBLY	
DIPPER ASSEMBLY	
CONSOLE ASSEMBLY #109322	16-17
VALVE ASSEMBLY #2265	18-23
VALVE #110610	
VALVE #110610 SECTIONS	
MAINFRAME HOSE KIT #111437	24-25
6100 BOOM AND DIPPER HOSE KIT #111438	26-27
6120 BOOM AND DIPPER HOSE KIT #111439	28-29
CYLINDER ASSEMBLIES	
RIGHT SWING CYLINDER #109426	30-31
LEFT SWING CYLINDER #109366	32-33
STABILIZER CYLINDER #109419	34-35
6100 BOOM CYLINDER #110326	36-37
6120 BOOM CYLINDER #109372	38-39
6100 DIPPER CYLINDER #110333	40-41
6120 DIPPER CYLINDER #109381	42-43
6100 BUCKET CYLINDER #110340	44-45
6120 BUCKET CYLINDER #109389	46-47
HYDRAULIC THUMB CYLINDER #16955	48-49
BUCKET ASSEMBLIES	50-51
OPTIONS	
2-WAY BOOM HYDRAULIC KIT	52-53
FIXED THUMB ASSEMBLY	54-55
HYDRAULIC THUMB ASSEMBLY	56-57
RUBBER STREET PAD KIT	58-59
BUCKET MOUNTS	60-61
SPACER KITS	62-63
DECALS	64-66

MAINFRAME ASSEMBLY

ASSEMBLY #109320 - MAINFRAME

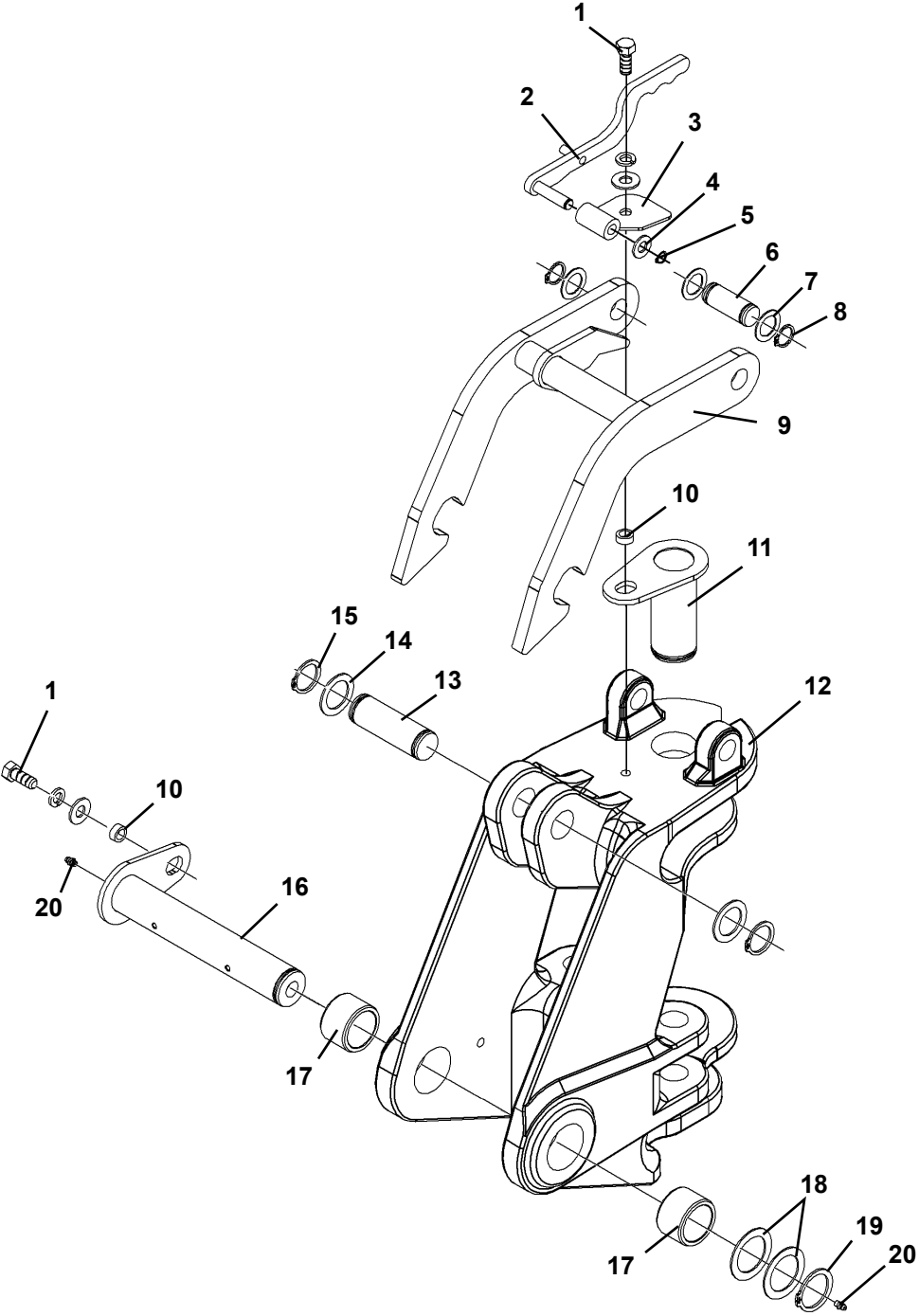


MAINFRAME ASSEMBLY
ASSEMBLY #109320 - MAINFRAME

<u>ITEM</u>	<u>REQ'D</u>	<u>PART NO.</u>	<u>DESCRIPTION</u>
1	4	82613	Thrust Washer 1.75"
2	2	82435	Self Aligning Bushing
3	1	109300	Mainframe
4	10	6616	Grease Fitting
5	2	1901	Snap Ring 2.00"
6	1	86149	Spacer Tube
7	1	1516	.50" Flat Washer
8	1	1505	.50" Lock Washer
9	1	1089	.50" UNC X 1.25" Hex Capscrew
10	1	109405	Pivot Pin
11	16	1652	Snap Ring 1.25"
12	12	57693	Thrust Washer 1.25" X .06"
13	6	109407	Pivot Pin
14	2	109447	Stabilizer Arm
15	4	64727	Thrust Washer 1.25" X .12"
16	2	109419	Stabilizer Cylinder Assembly
17	2	16702	Pivot Pin
18	2	109323	Flip Over Grouser Pad

MAINFRAME ASSEMBLY

ASSEMBLY #109320 - SWING POST

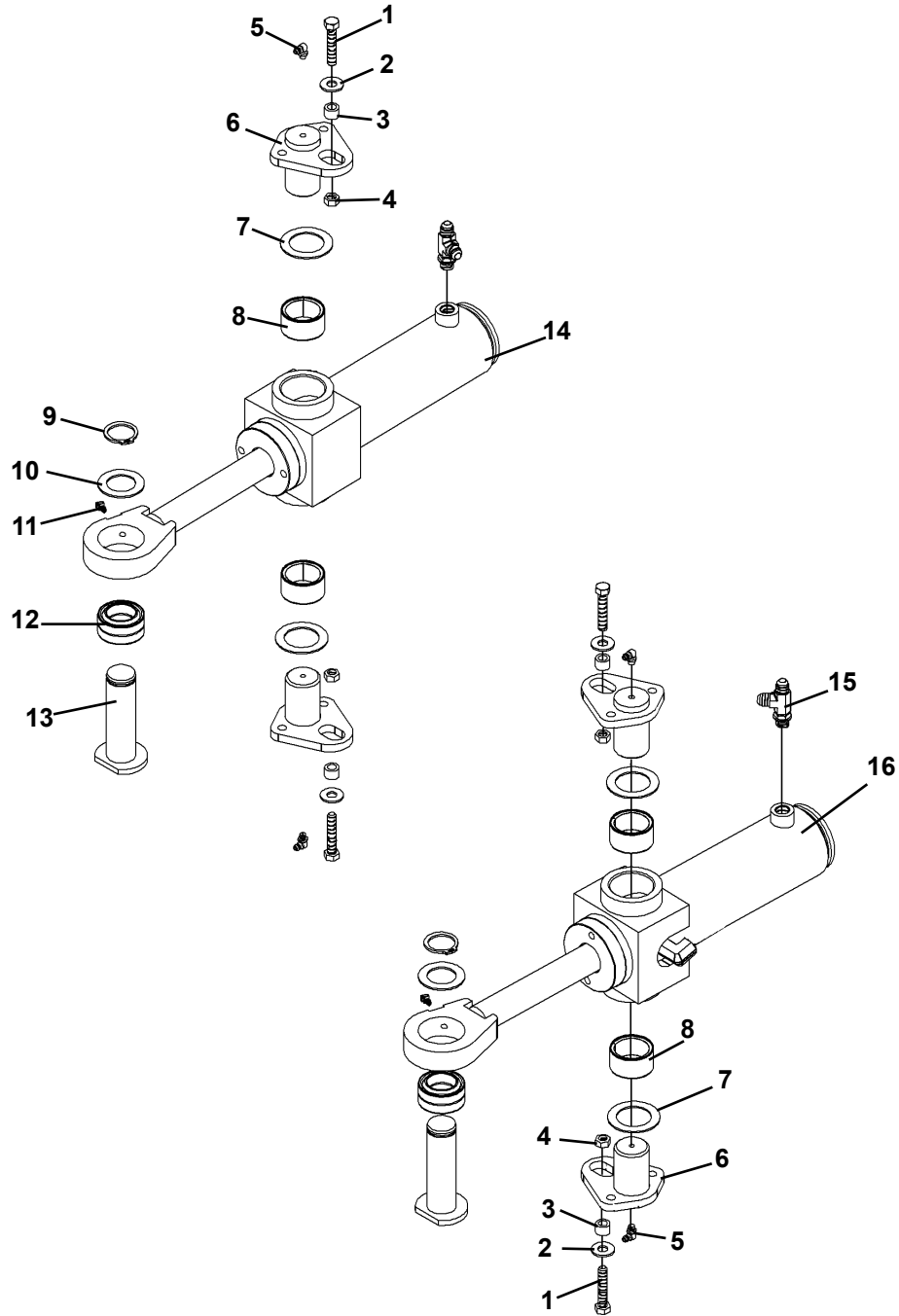


MAINFRAME ASSEMBLY
ASSEMBLY #109320 - SWING POST

<u>ITEM</u>	<u>REQ'D</u>	<u>PART NO.</u>	<u>DESCRIPTION</u>
1	2	1089	.50" UNC X 1.25" Hex Capscrew
	2	1505	.50" Lock Washer
	2	1516	.50" Flat Washer
2	1	109397	Bool Lock Handle
3	1	109425	Boom Lock Mount
4	1	1527	.50" Flat Washer
5	1	109446	Snap Ring .50"
6	2	63302	Pivot Pin
7	6	57462	Thrust Washer 1.00"
8	4	6612	Snap Ring 1.00"
9	1	109379	Bool Lock
10	2	86149	Spacer Tube
11	1	109405	Pivot Pin
12	1	109325	Swing Post
31	1	77589	Pivot Pin
14	2	64724	Thrust Washer
15	2	1650	Snap Ring 1.38"
16	1	109403	Pivot Pin
17	2	109318	Bushing
18	2	6622	Thrust Washer 1.75"
19	1	1651	Snap Ring 1.75"
20	2	6616	Grease Fitting

MAINFRAME ASSEMBLY

ASSEMBLY #109320 - SWING CYLINDERS

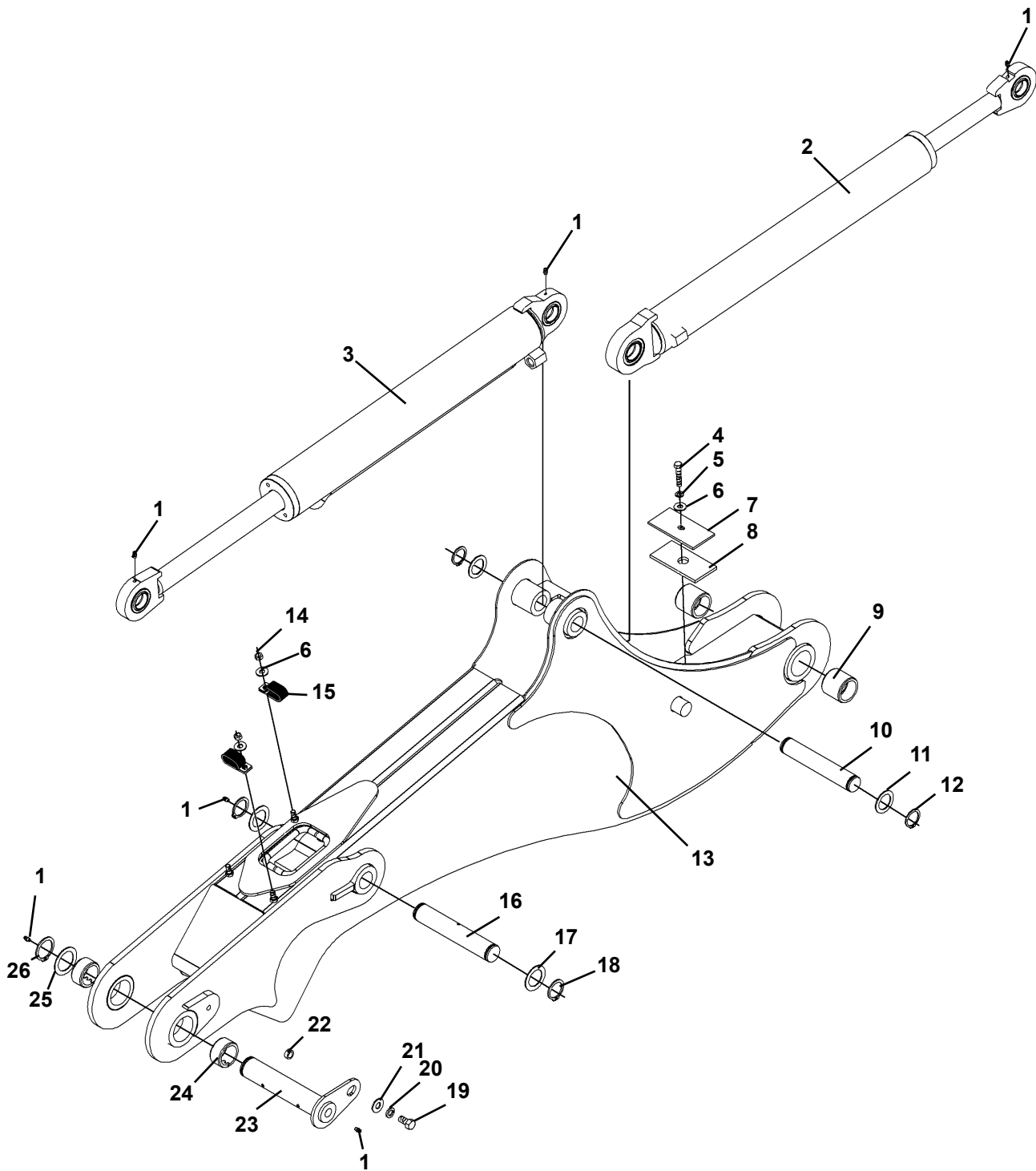


MAINFRAME ASSEMBLY
ASSEMBLY #109320 - SWING CYLINDERS

<u>ITEM</u>	<u>REQ'D</u>	<u>PART NO.</u>	<u>DESCRIPTION</u>
1	4	1047	.38" UNC X 2.00" Hex Capscrew
2	4	1514	.38" Flat Washer
3	4	81595	Spacer Tube
4	4	1837	.38" UNC Deformed Lock Nut
5	4	53031	90° Grease Fitting
6	4	82420	Pivot Pin
7	4	68057	Thrust Washer 1.50"
8	4	82441	Needle Bearing (Included in Swing Cylinder Assembly)
9	2	1652	Snap Ring
10	2	57693	Thrust Washer 1.25"
11	2	6616	Grease Fitting
12	2	62523	Self Aligning Bushing (Included in Swing Cylinder Assembly)
13	2	109401	Cylinder Pin
14	1	109426	Right Swing Cylinder
15	2	30243	Tee 6MBo ADJ - 6MJ-6MJ
16	1	109366	Left Swing Cylinder

6100 BOOM AND DIPPER ASSEMBLY

ASSEMBLY #110321



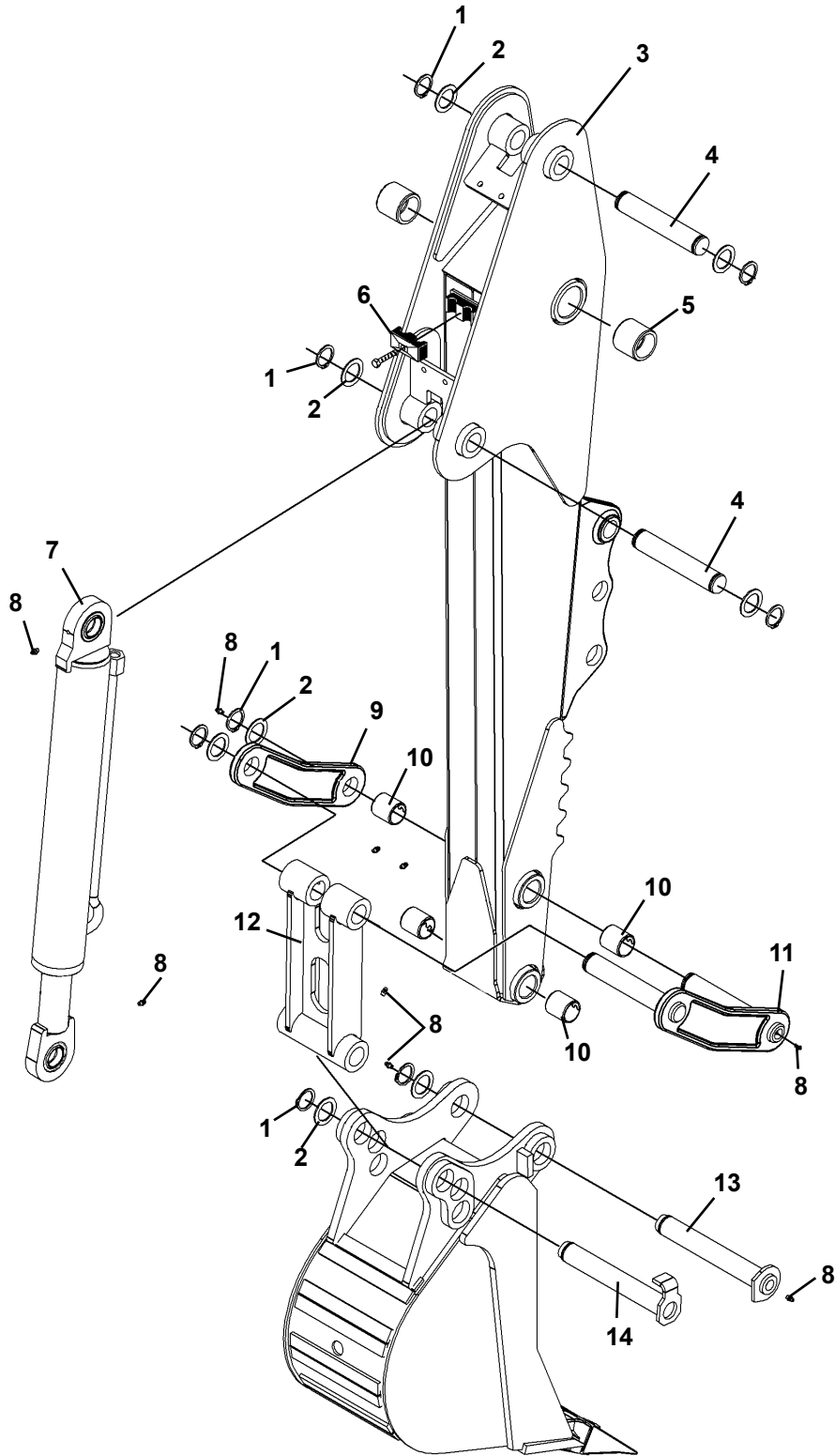
6100 BOOM AND DIPPER ASSEMBLY

ASSEMBLY #110321

<u>ITEM</u>	<u>REQ'D</u>	<u>PART NO.</u>	<u>DESCRIPTION</u>
1	6	6616	Grease Fitting
2	1	110326	Boom Cylinder Assembly
3	1	110333	Dipper Cylinder Assembly
4	1	1047	.38" UNC X 2.00" Hex Capscrew
5	1	1503	.38" Lock Washer
6	3	1514	.38" Flat Washer
7	1	82862	Hose Clamp
8	1	82863	Rubber Spacer
9	2	86673	Bushing (Included in Boom Assembly)
10	1	82533	Pivot Pin
11	2	64724	Thrust Washer 1.38"
12	2	1650	Snap Ring 1.38"
13	1	110300	Boom Assembly
14	2	1837	.38" UNC Deformed Lock Nut
15	2	82859	Hose Clamp
16	1	109414	Pivot Pin
17	2	68057	Thrust Washer 1.50"
18	2	1684	Snap Ring 1.50"
19	1	1088	.50" UNC X 1.00" Hex Capscrew
20	1	1505	.50" Lock Washer
21	1	1516	.50" Flat Washer
22	1	109415	Pivot Pin
23	1	86149	Spacer Tube
24	2	82402	Bushing (Included in Boom Assembly)
25	1	6622	Thrust Washer 1.75"
26	1	1651	Snap Ring 1.75"

6100 BOOM AND DIPPER ASSEMBLY

ASSEMBLY #110321



BUCKET
(NOT INCLUDED IN BOOM AND DIPPER ASSEMBLY)

11298 1-8-09

6100 BOOM AND DIPPER ASSEMBLY

ASSEMBLY #110321

<u>ITEM</u>	<u>REQ'D</u>	<u>PART NO.</u>	<u>DESCRIPTION</u>
1	8	1650	Snap Ring 1.38"
2	8	64724	Thrust Washer 1.38"
3	1	110311	Dipper Assembly
4	2	82534	Pivot Pin
5	2	86673	Bushing (Included in Dipper Assembly)
6	-	81358	Replacement Hose Clamp (Included in Dipper Assembly)
7	1	110340	Dipper Cylinder Assembly
8	9	6616	Grease Fitting
9	1	84914	Dipper Link Plate
10	4	81610	Bushing (Included in Dipper Assembly)
11	1	109353	Dipper Link
12	1	109441	Bucket Link
13	1	109410	Pivot Pin
14	1	109413	Pivot Pin

11299 1-8-09

6120 BOOM AND DIPPER ASSEMBLY

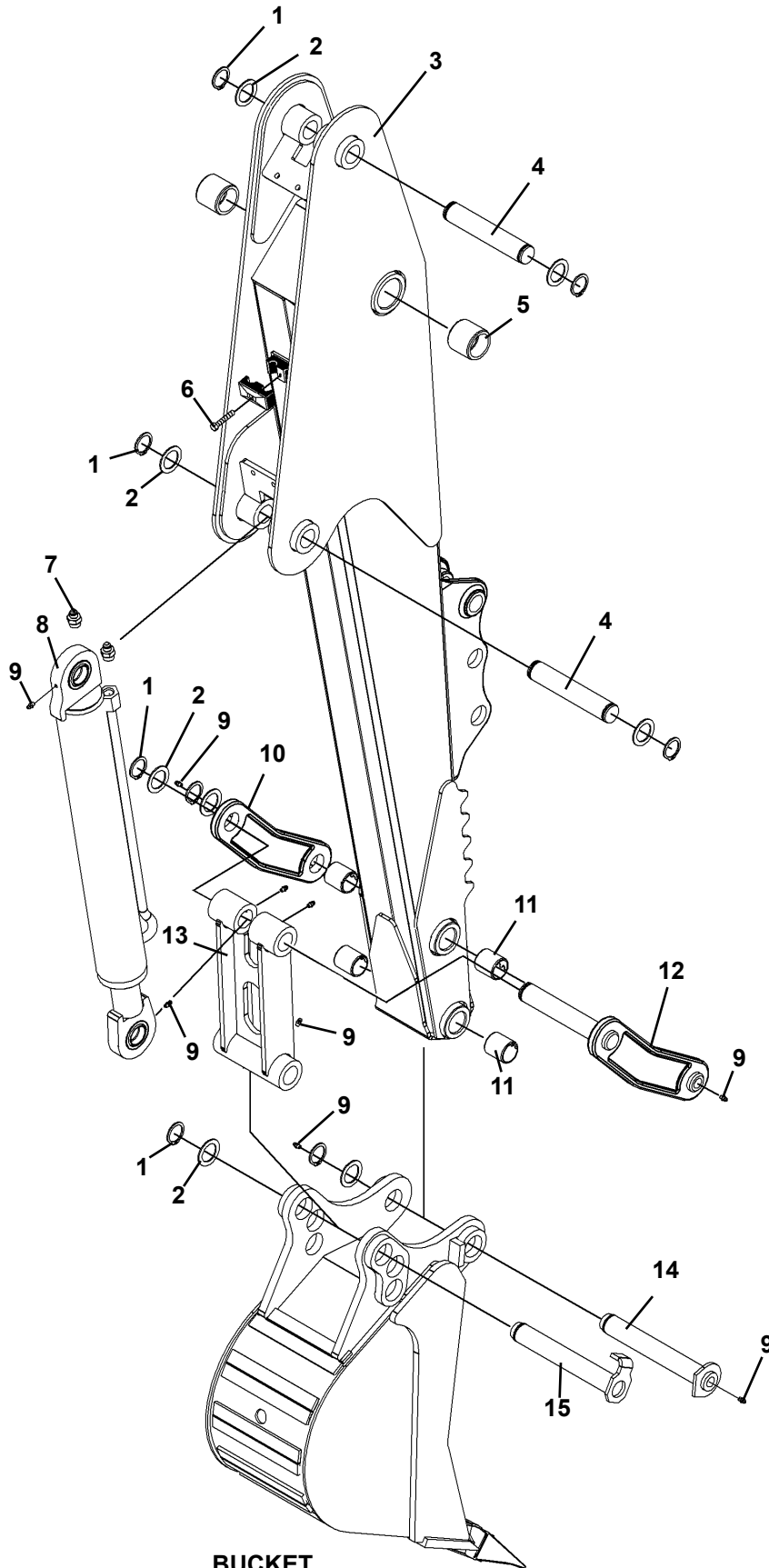
ASSEMBLY #109321

<u>ITEM</u>	<u>REQ'D</u>	<u>PART NO.</u>	<u>DESCRIPTION</u>
1	6	6616	Grease Fitting
2	1	109372	Boom Cylinder Assembly
3	1	109381	Dipper Cylinder Assembly
4	4	3269	Straight Connector 8MBo-6MJ
5	1	1047	.38" UNC X 2.00" Hex Capscrew
6	1	1503	.38" Lock Washer
7	1	82862	Hose Clamp
8	1	82863	Rubber Spacer
9	2	86673	Bushing (Included in Boom Assembly)
10	1	82533	Pivot Pin
11	2	64724	Thrust Washer 1.38"
12	2	1650	Snap Ring 1.38"
13	1	109327	Boom Assembly
14	3	1837	.38" UNC Deformed Lock Nut
15	2	54900	Hose Clamp - Single
16	1	109414	Pivot Pin
17	2	68057	Thrust Washer 1.50"
18	2	1684	Snap Ring 1.50"
19	1	1088	.50" UNC X 1.00" Hex Capscrew
20	1	1505	.50" Lock Washer
21	1	1516	.50" Flat Washer
22	1	109415	Pivot Pin
23	1	86149	Spacer Tube
24	2	82402	Bushing (Included in Boom Assembly)
25	1	6622	Thrust Washer 1.75"
26	1	1651	Snap Ring 1.75"
27	3	1514	.38" Flat Washer
28	1	82859	Hose Clamp

11301 1-8-09

6120 BOOM AND DIPPER ASSEMBLY

ASSEMBLY #109321



BUCKET
(NOT INCLUDED IN BOOM AND DIPPER ASSEMBLY)

11302 1-8-09

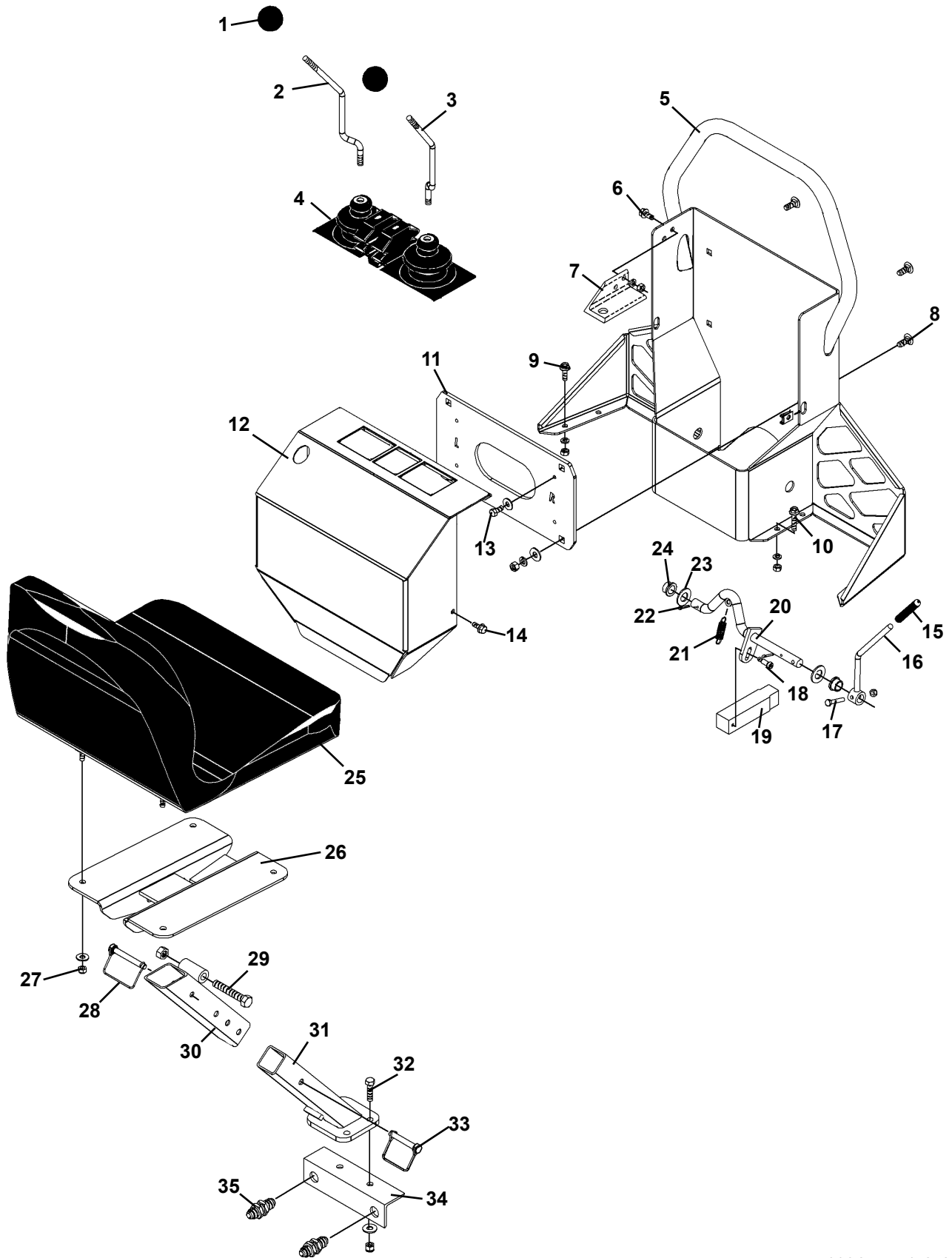
6120 BOOM AND DIPPER ASSEMBLY

ASSEMBLY #109321

<u>ITEM</u>	<u>REQ'D</u>	<u>PART NO.</u>	<u>DESCRIPTION</u>
1	8	1650	Snap Ring 1.38"
2	8	64724	Thrust Washer 1.38"
3	1	109354	Dipper Assembly
4	2	82534	Pivot Pin
5	2	86673	Bushing (Included in Dipper Assembly)
6	-	81358	Replacement Hose Clamp (Included in Dipper Assembly)
7	2	3269	Straight Connector 8MBo-6MJ
8	1	109389	Dipper Cylinder Assembly
9	9	6616	Grease Fitting
10	1	84914	Dipper Link Plate
11	4	81610	Bushing (Included in Dipper Assembly)
12	1	109353	Dipper Link
13	1	109441	Bucket Link
14	1	109410	Pivot Pin
15	1	109413	Pivot Pin

CONSOLE ASSEMBLY

ASSEMBLY #109322



11304 1-8-09

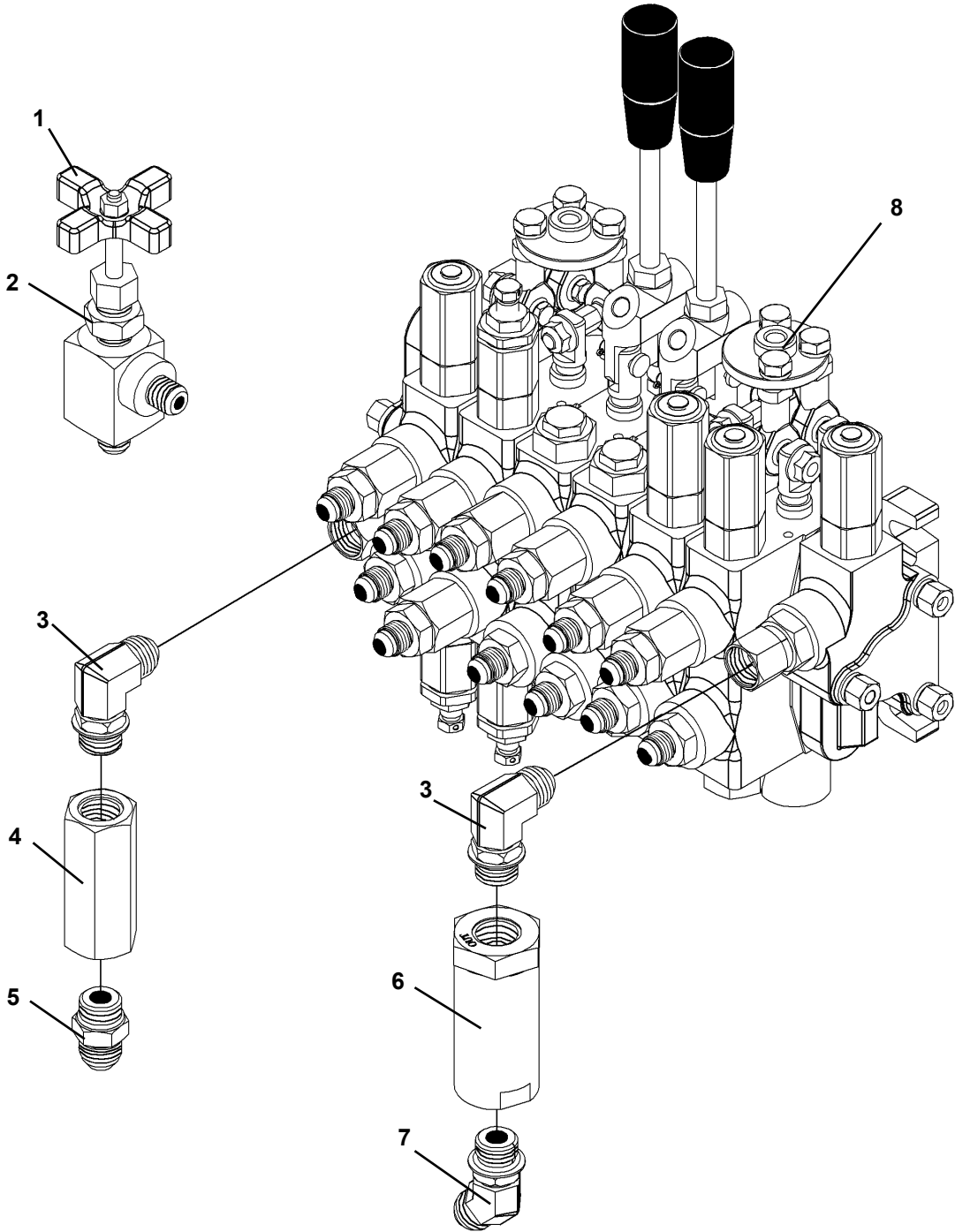
CONSOLE ASSEMBLY

ASSEMBLY #109322

<u>ITEM</u>	<u>REQ'D</u>	<u>PART NO.</u>	<u>DESCRIPTION</u>		
1	2	85838	Ball Knob		
2	1	87951	Left Control Handle		
3	1	87952	Right Control Handle		
4	1	83235	Rubber Boot - Control Levers		
5	1	110346	Console		
6	2	1930	.31" UNC X .75" Flange Head Capscrew		
	2	1502	.31" Lock Washer		
	2	1225	.31" UNC Hex Nut		
7	1	109315	Angle Mount		
8	4	10008	.38" UNC X 1.00" Carriage Bolt		
	4	1514	.38" Flat Washer		
	4	1503	.38" Lock Washer		
	4	1226	.38" UNC Hex Nut		
9	4	10193	.31" UNC X .75" Flange Head Capscrew		
	4	1502	.31" Lock Washer		
	4	1225	.31" UNC Hex Nut		
10	4	10192	.31" UNC X 1.00" Flange Head Capscrew		
	4	1502	.31" Lock Washer		
	4	1225	.31" UNC Hex Nut		
11	1	110350	Valve Mounting Plate		
12	1	109440	Valve Cover		
13	3	1021	.31" UNC X .75" Hex Capscrew		
	3	1513	.31" Flat Washer		
14	2	1930	.31" UNC X .75" Flange Head Capscrew		
	2	1926	.31" UNC U Clip		
15	1	83656	Handle Grip		
16	1	110323	Swing Lock Handle		
17	1	1005	.25" UNC X 1.50" Hex Capscrew		
	1	1629	.25" UNC Nylock Nut		
18	1	1982	.31" UNC X .62" Shoulder Screw		
19	1	109348	Swing Lock Pin		
20	1	109346	Swing Lock Rod		
21	1	110320	Extension Spring		
22	2	1611	Cotter Pin		
23	2	1528	.62" Flat Washer		
24	2	82794	Bushing		
25	1	105988	Seat		
26	1	107438	Seat Bracket		
27	4	1753	.31" UNC Nylock Nut		
	4	1513	.31" Flat Washer		
28	1	107439	Safety Snap Pin		
29	1	1096	.50" UNC X 3.00" Hex Capscrew		
	1	1841	.50" UNC Deformed Lock Nut		
30	1	105241	Seat Mount		
31	1	105240	Seat Mounting Base		
32	4	1045	.38" UNC X 1.50" Hex Capscrew		
	4	1514	.38" Flat Washer		
	4	1536	.38" UNC Nylock Nut		
33	1	105247	Lynch Pin		
34	1	109388	Hydraulic Mounting Angle Bracket		
35	2	3275	Straight Bulkhead Fitting 8MJ-8MJ	11305	1-8-09

VALVE ASSEMBLY

ASSEMBLY #2265



VALVE ASSEMBLY

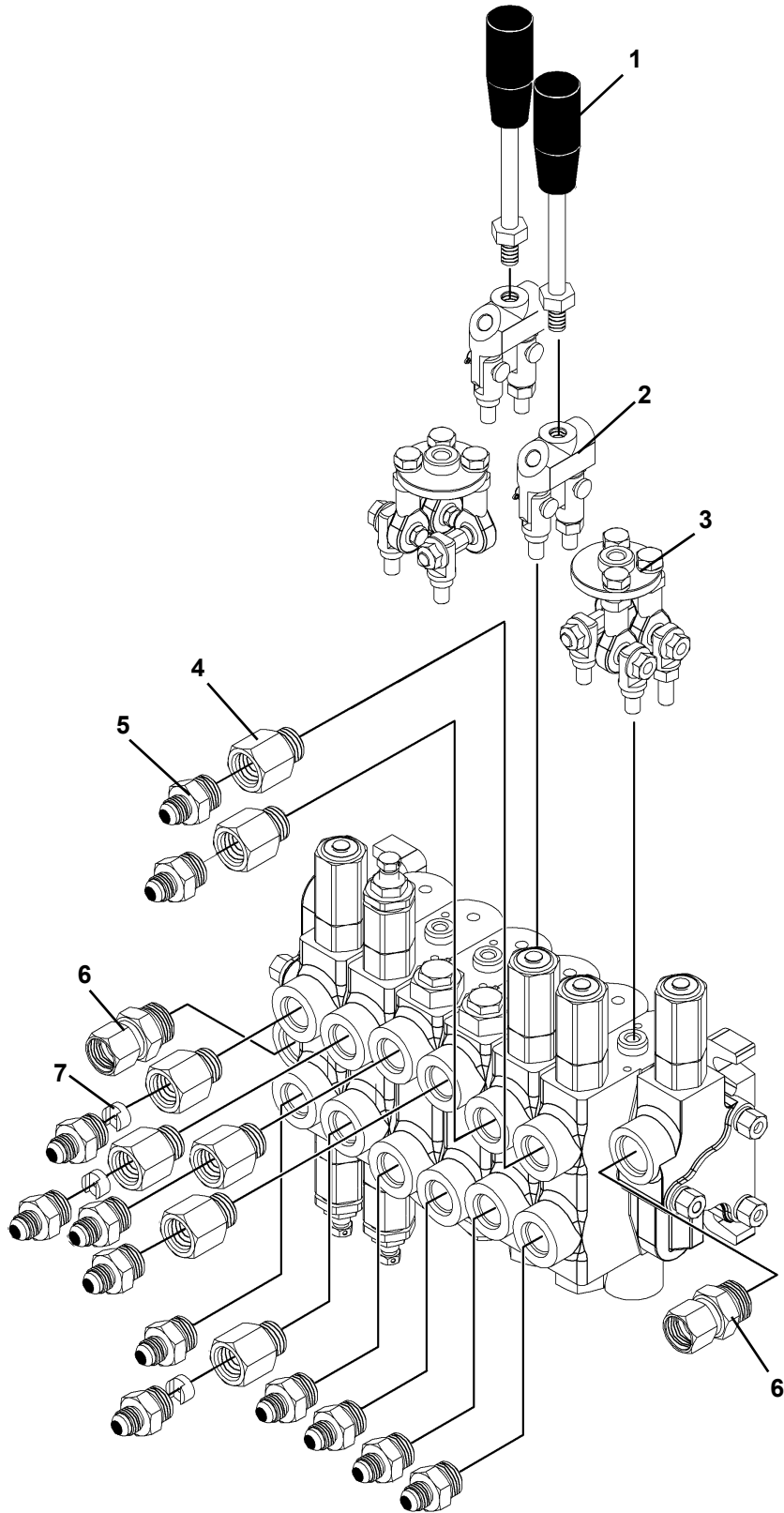
ASSEMBLY #2265

<u>ITEM</u>	<u>REQ'D</u>	<u>PART NO.</u>	<u>DESCRIPTION</u>
1	1	108110	Needle Valve
2	1	10190	.62" UNF Hex Jam Nut
3	2	3104	90° Elbow 8MBo-8MJ
4	1	107636	Check Valve (Hex)
5	1	3103	Straight Connector 8 MBo-8MJ
6	1	107635	In-line Filter (Round)
7	1	3272	45° Elbow 8MBo-8MJ
8	1	110610	6-Spool Valve Assembly

11307 1-9-09

VALVE ASSEMBLY

ASSEMBLY #110610



VALVE ASSEMBLY

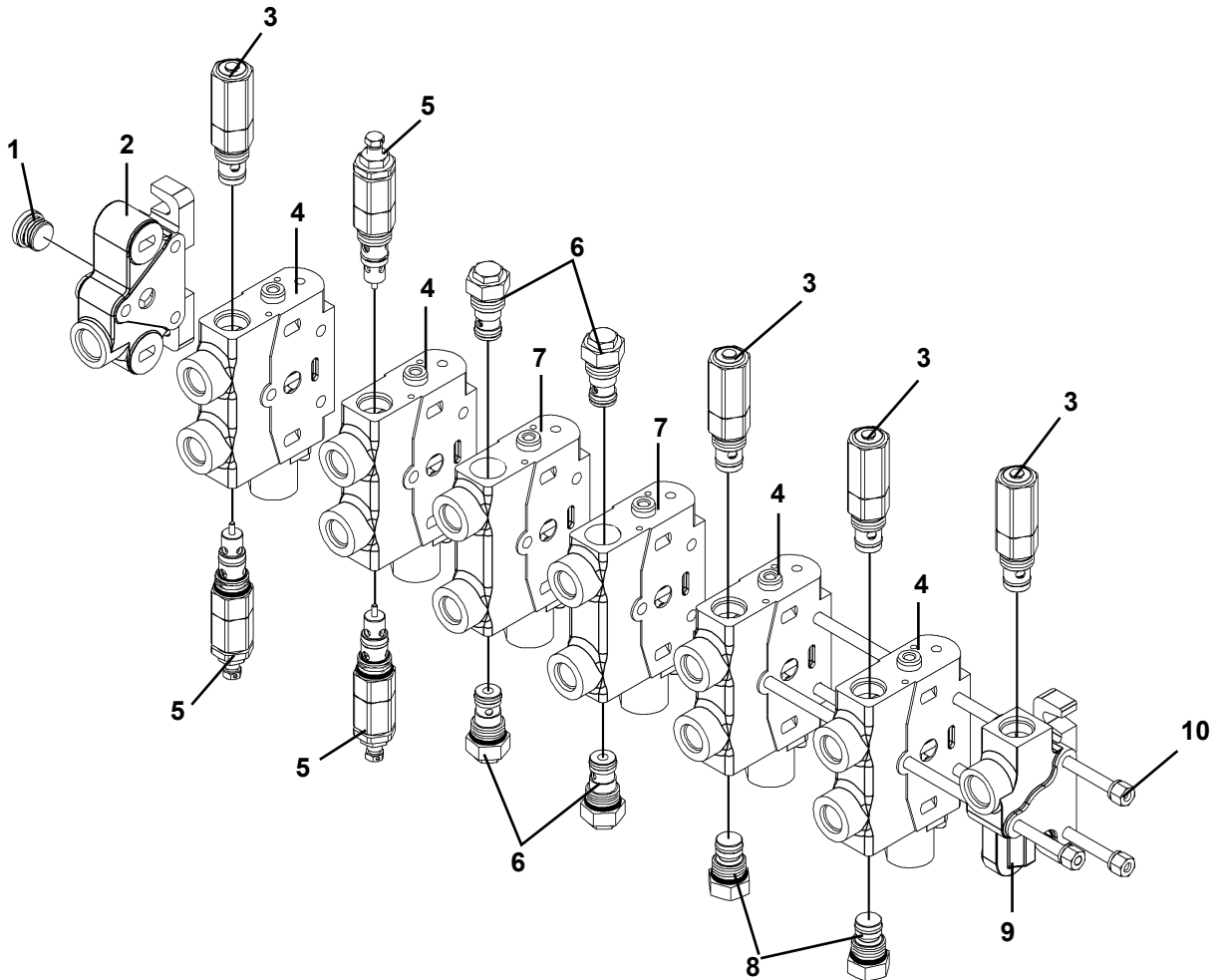
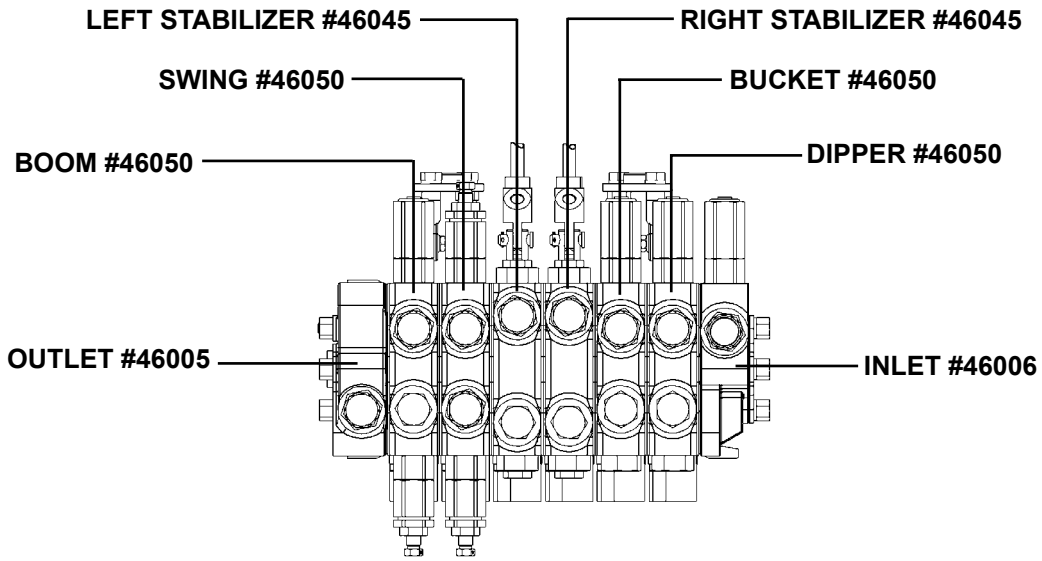
ASSEMBLY #110610

<u>ITEM</u>	<u>REQ'D</u>	<u>PART NO.</u>	<u>DESCRIPTION</u>
1	2	46052	Handle
2	2	46044	Joystick Pivot Block
3	2	46047	Joystick Mechanism
4	7	30346	Straight Connector 8MBo-8FBo
5	12	3269	Straight Connector 8MBo-6MJ
6	2	30433	Straight Connector 10MBo-8FJX
7	3	46004	Restrictor .098"

11309 1-9-09

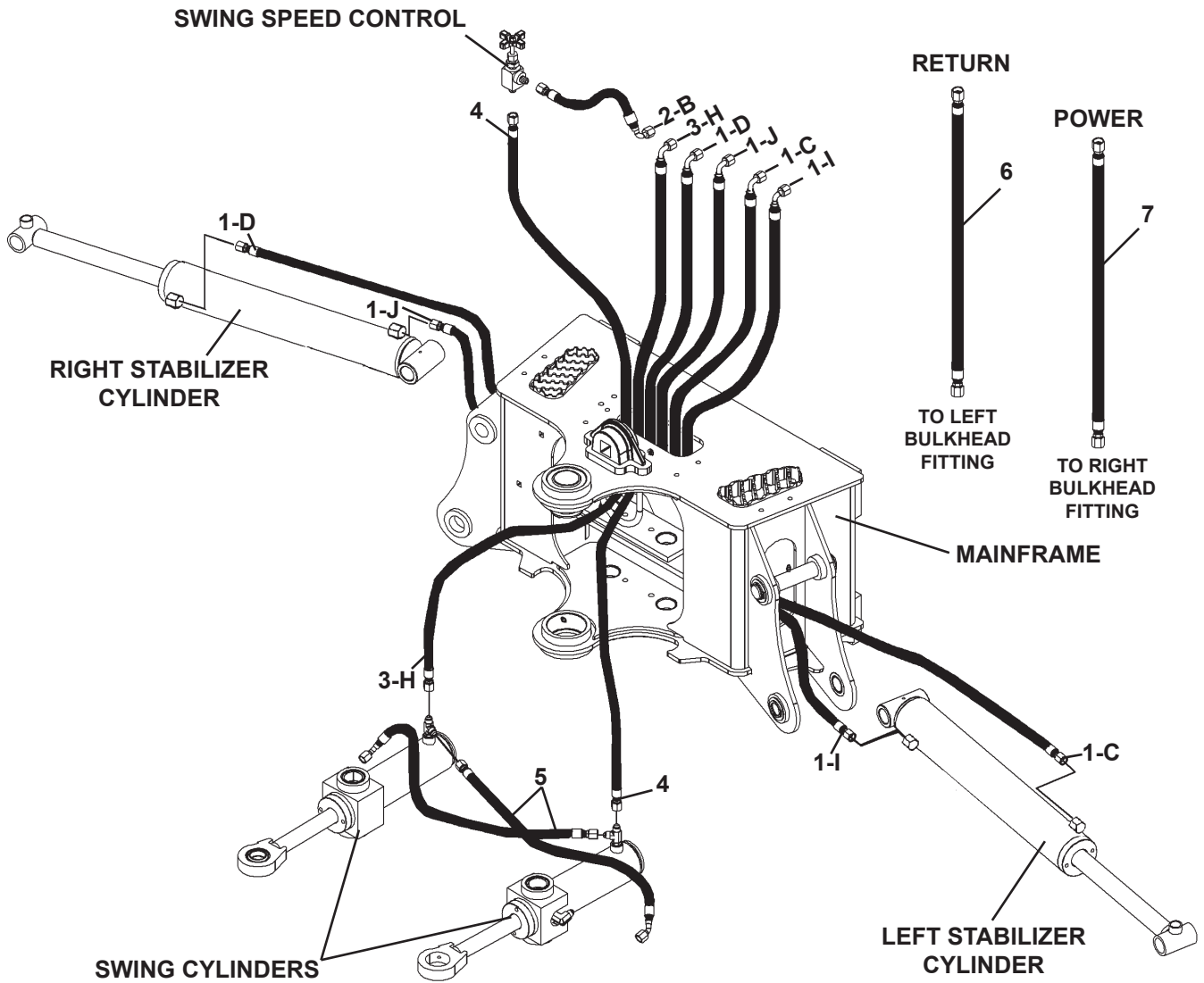
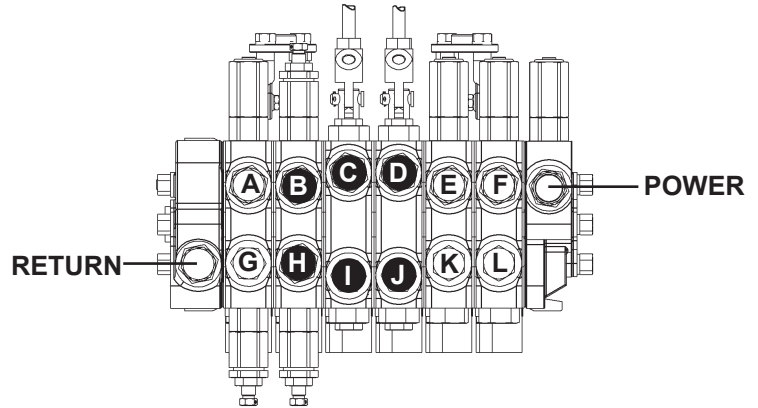
VALVE ASSEMBLY

ASSEMBLY #110610 - VALVE SECTIONS



MAINFRAME HOSE KIT

ASSEMBLY #111437



11312 1-9-09

MAINFRAME HOSE KIT

ASSEMBLY #111437

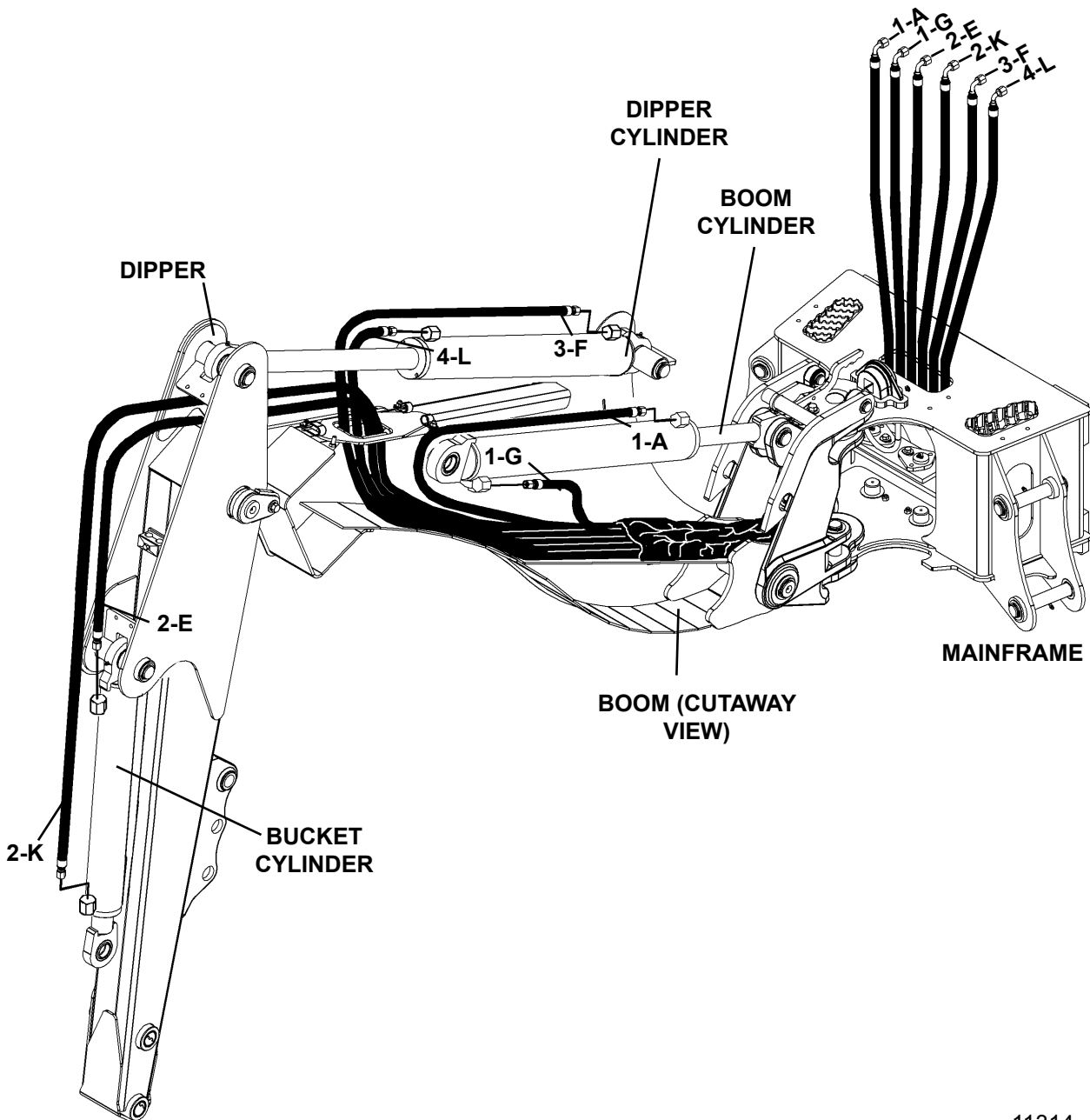
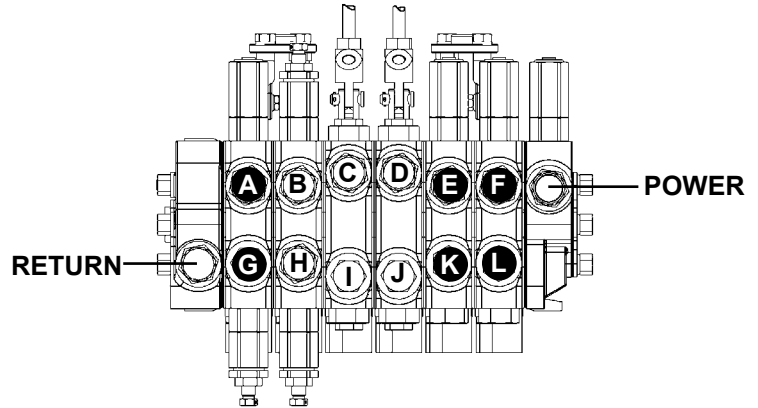
<u>ITEM</u>	<u>REQ'D</u>	<u>PART NO.</u>	<u>DESCRIPTION</u>
1	4	38568	Hose .25" X 45" 6FJX-6FJX 90°
2	1	38426	Hose .25" X 13.50" 6FJX-6FJX 90°
3	1	38566	Hose .25" X 31" 6FJX-6FJX 90°
4	1	38574	Hose .25" X 32" 6FJX-6FJX
5	2	38567	Hose .25" X 20" 6FJX-6FJX 45°
6	1	38573	Hose .50" X 14" 8FJX-8FJX
7	1	3641	Hose .50" X 16" 8FJX-8FJX

NOTE: The fittings on the hydraulic cylinders have been altered for clarity purposes. This will assist you in distinguishing between the rod end and the barrel end of the various hydraulic cylinders.

NOTE: Letters on the hose set diagram show the hydraulic hose routing between the backhoe control valve and the various hydraulic cylinders. Simply match the letter on the control valve port to the same letter on the hydraulic hose ends. Example: Hose Assembly labeled "C" runs from the upper left stabilizer port on the hydraulic control valve - through the mainframe to the rod end fitting on the left stabilizer cylinder.

6100 BOOM AND DIPPER HOSE KIT

ASSEMBLY #111438



6100 BOOM AND DIPPER HOSE KIT

ASSEMBLY #111438

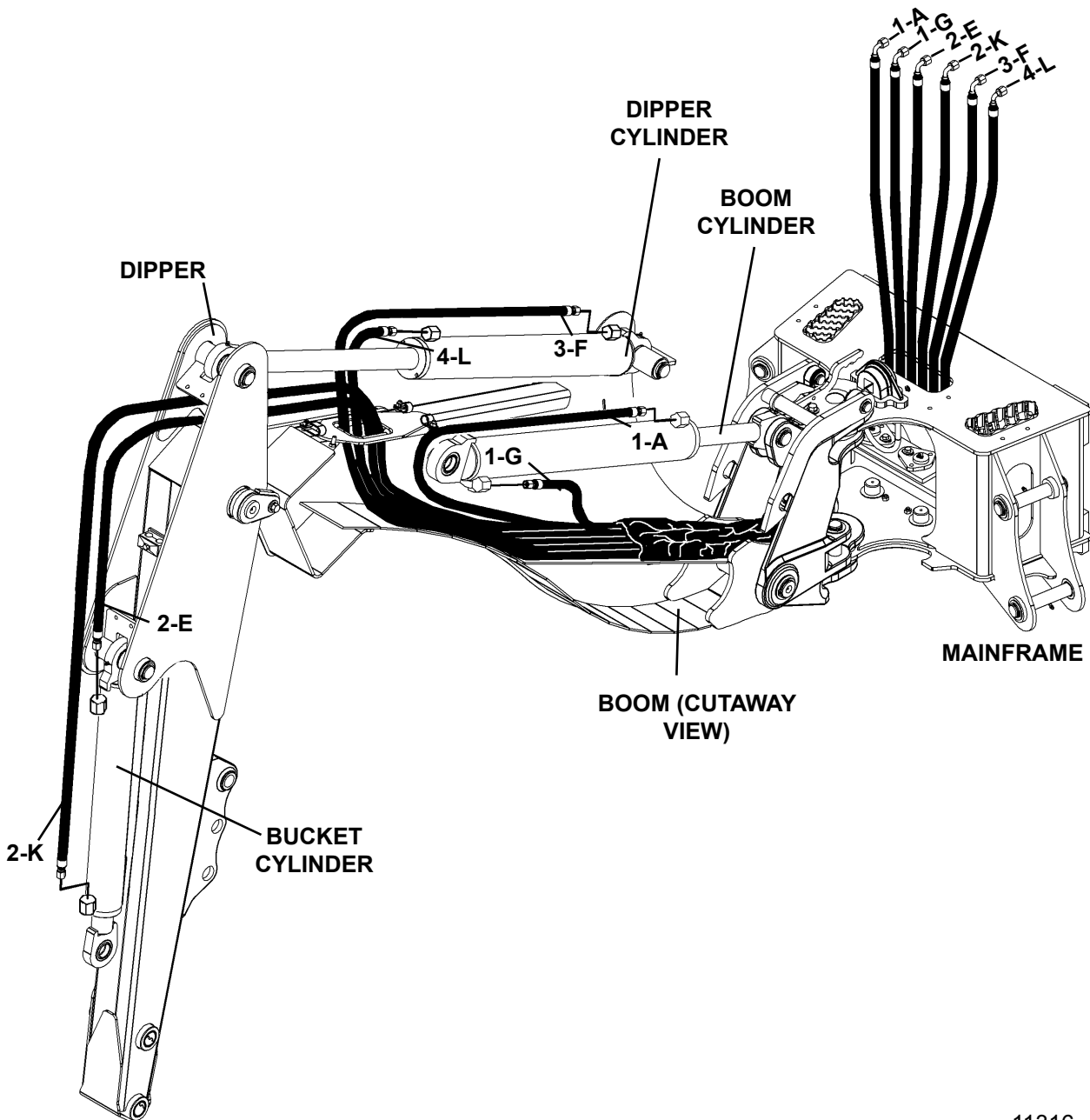
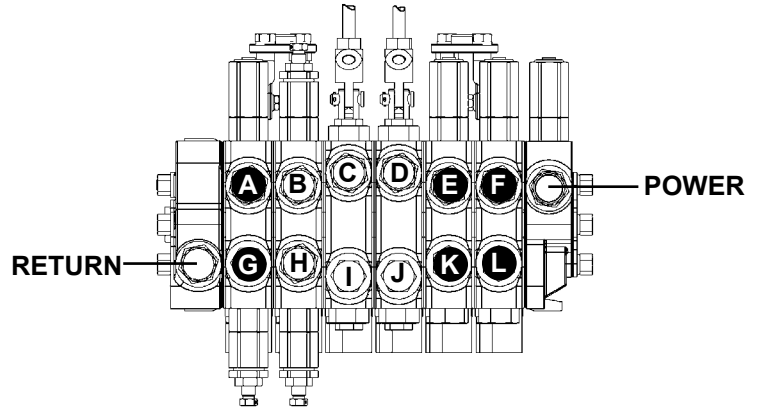
<u>ITEM</u>	<u>REQ'D</u>	<u>PART NO.</u>	<u>DESCRIPTION</u>
1	2	38562	Hose .25" X 85" 6FJX-6FJX 90°
2	2	38565	Hose .25" X 142" 6FJX-6FJX 90°
3	1	38564	Hose .25" X 128" 6FJX-6FJX 90°
4	1	38563	Hose .25" X 121" 6FJX-6FJX 90°

NOTE: The fittings on the hydraulic cylinders have been altered for clarity purposes. This will assist you in distinguishing between the rod end and the barrel end of the various hydraulic cylinders.

NOTE: Letters on the hose set diagram show the hydraulic hose routing between the backhoe control valve and the various hydraulic cylinders. Simply match the letter on the control valve port to the same letter on the hydraulic hose ends. Example: Hose Assembly labeled "G" runs from the lower boom port on the hydraulic control valve - through the mainframe to the barrel end fitting on the boom cylinder.

6120 BOOM AND DIPPER HOSE KIT

ASSEMBLY #111439



6120 BOOM AND DIPPER HOSE KIT

ASSEMBLY #111439

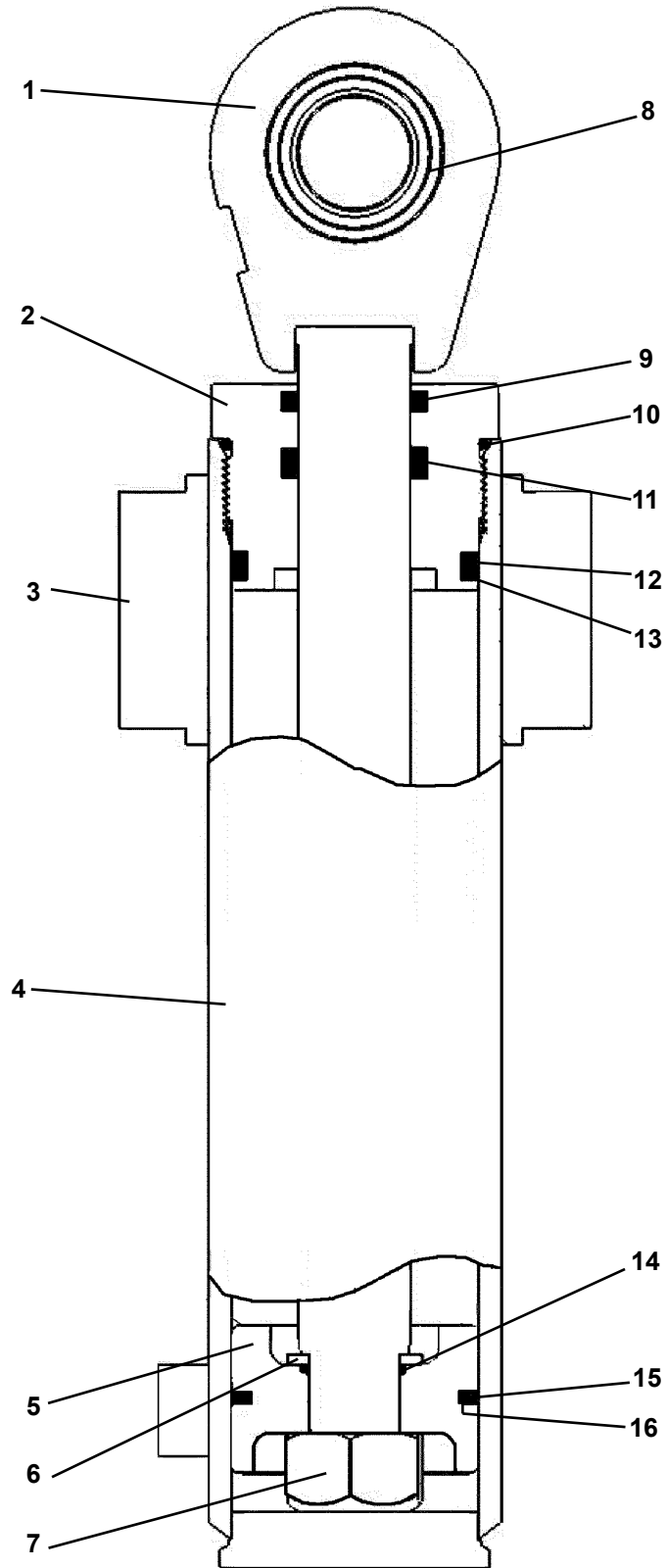
<u>ITEM</u>	<u>REQ'D</u>	<u>PART NO.</u>	<u>DESCRIPTION</u>
1	2	38569	Hose .25" X 87" 6FJX-6FJX 90°
2	2	38572	Hose .25" X 162" 6FJX-6FJX 90°
3	1	38565	Hose .25" X 142" 6FJX-6FJX 90°
4	1	38570	Hose .25" X 137" 6FJX-6FJX 90°

NOTE: The fittings on the hydraulic cylinders have been altered for clarity purposes. This will assist you in distinguishing between the rod end and the barrel end of the various hydraulic cylinders.

NOTE: Letters on the hose set diagram show the hydraulic hose routing between the backhoe control valve and the various hydraulic cylinders. Simply match the letter on the control valve port to the same letter on the hydraulic hose ends. Example: Hose Assembly labeled "G" runs from the lower boom port on the hydraulic control valve - through the mainframe to the barrel end fitting on the boom cylinder.

RIGHT SWING CYLINDER ASSEMBLY

ASSEMBLY #109426



RIGHT SWING CYLINDER ASSEMBLY

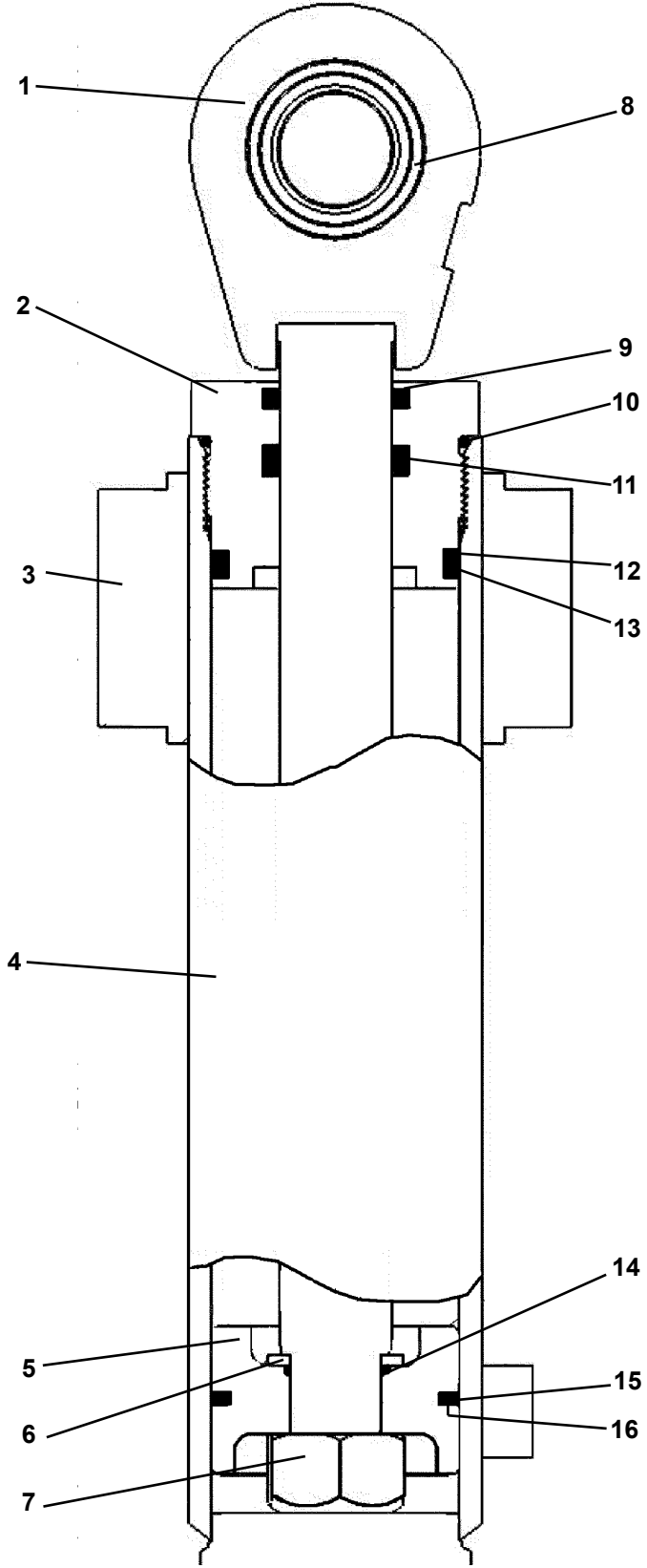
ASSEMBLY #109426

<u>ITEM</u>	<u>REQ'D</u>	<u>PART NO.</u>	<u>DESCRIPTION</u>
1	1	109369	Cylinder Rod
2	1	77441	Cylinder Gland
3	2	82441	Needle Bearing
4	1	109427	Cylinder Tube
5	1	105320	Dual Cushion Piston
6	1	5421	Spacer
7	1	1483	Hex Nut (Torque to 230-325 ft. lbs.)
8	1	62523	Self Aligning Bushing
9	1	45389*	Rod Wiper
10	1	4570*	O'Ring
11	1	45219*	Poly-Pak Seal
12	1	45249*	Back-Up Washer
13	1	45557*	O'Ring
14	1	4641*	O'Ring
15	1	45251*	Piston Ring
16	1	45250*	O'Ring

NOTE: Seal Kit #45551 includes all parts marked with an asterisk (*). Parts are not sold separately.

LEFT SWING CYLINDER ASSEMBLY

ASSEMBLY #109366



LEFT SWING CYLINDER ASSEMBLY

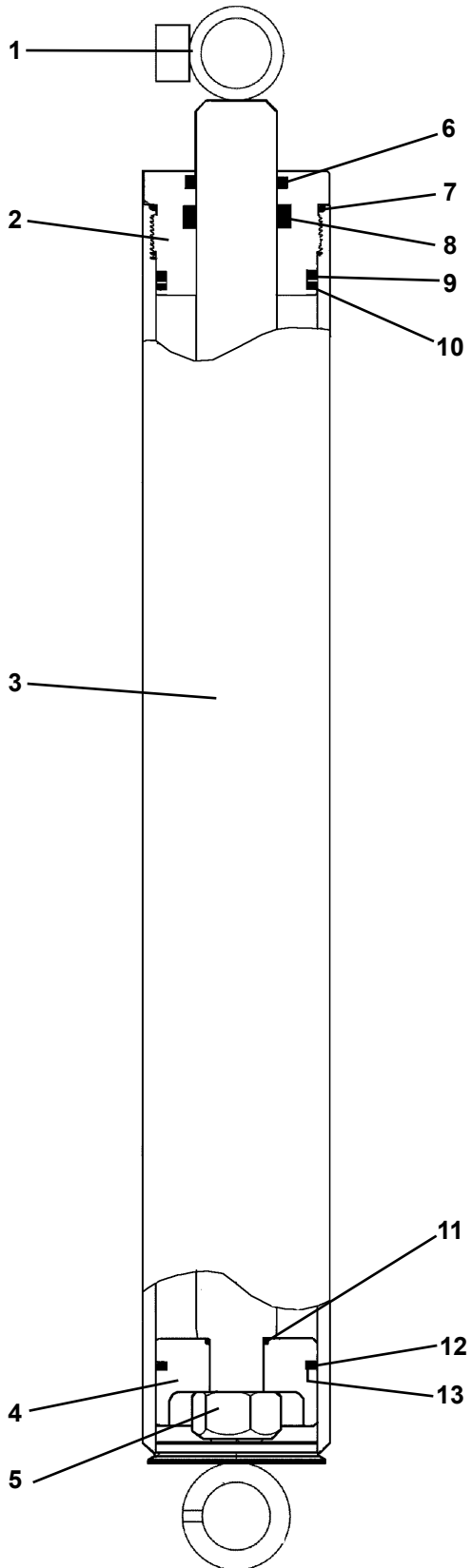
ASSEMBLY #109366

<u>ITEM</u>	<u>REQ'D</u>	<u>PART NO.</u>	<u>DESCRIPTION</u>
1	1	109369	Cylinder Rod
2	1	77441	Cylinder Gland
3	2	82441	Needle Bearing
4	1	109367	Cylinder Tube
5	1	105320	Dual Cushion Piston
6	1	5421	Spacer
7	1	1483	Hex Nut (Torque to 230-325 ft. lbs.)
8	1	62523	Self Aligning Bushing
9	1	45389*	Rod Wiper
10	1	4570*	O'Ring
11	1	45219*	Poly-Pak Seal
12	1	45249*	Back-Up Washer
13	1	45557*	O'Ring
14	1	4641*	O'Ring
15	1	45251*	Piston Ring
16	1	45250*	O'Ring

NOTE: Seal Kit #45551 includes all parts marked with an asterisk (*). Parts are not sold separately.

STABILIZER CYLINDER ASSEMBLY

ASSEMBLY #109419



11318 1-12-09

STABILIZER CYLINDER ASSEMBLY

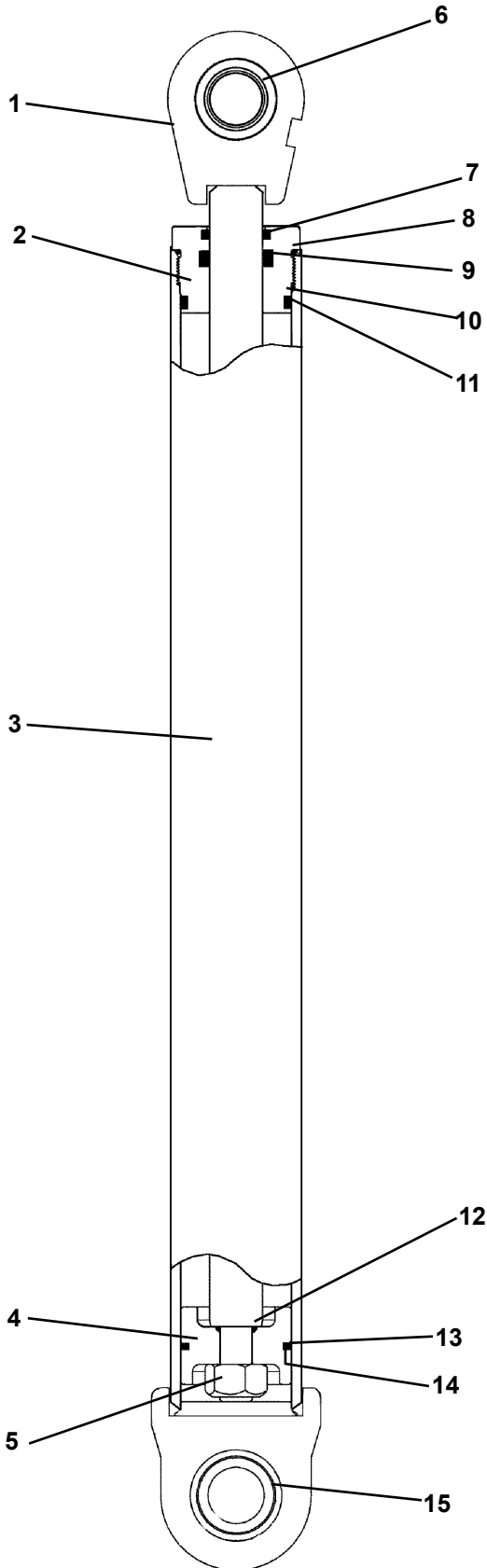
ASSEMBLY #109419

<u>ITEM</u>	<u>REQ'D</u>	<u>PART NO.</u>	<u>DESCRIPTION</u>
1	1	109423	Cylinder Rod
2	1	77445	Cylinder Gland
3	1	109420	Cylinder Tube
4	1	82793	Piston
5	1	1483	Hex Nut (Torque to 230-325 ft. lbs.)
6	1	45372*	Rod Wiper
7	1	4908*	O'Ring
8	1	45225*	Poly-Pak Seal
9	1	4631*	Back-Up Washer
10	1	45555*	O'Ring
11	1	4641*	O'Ring
12	1	4569*	Piston Ring
13	1	4570*	O'Ring

NOTE: Seal Kit #45550 includes all parts marked with an asterisk (*). Parts are not sold separately.

6100 BOOM CYLINDER ASSEMBLY

ASSEMBLY #110326



11326 1-12-09

6100 BOOM CYLINDER ASSEMBLY

ASSEMBLY #110326

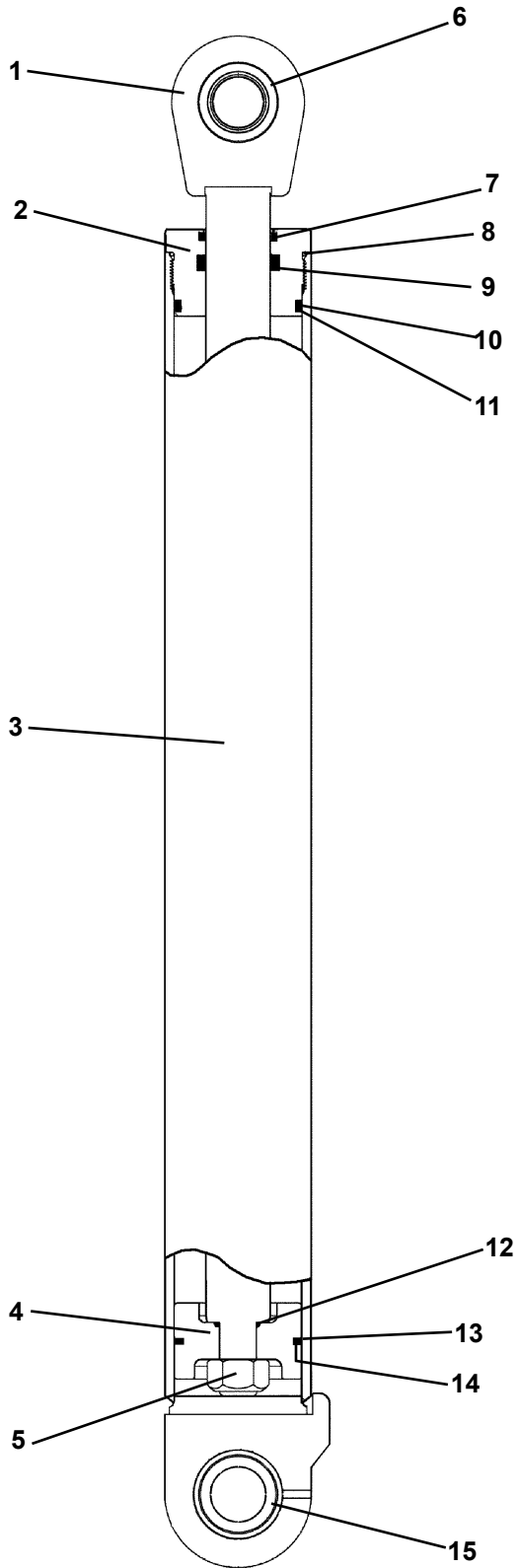
<u>ITEM</u>	<u>REQ'D</u>	<u>PART NO.</u>	<u>DESCRIPTION</u>
1	1	110330	Cylinder Rod
2	1	77445	Cylinder Gland
3	1	110327	Cylinder Tube
4	1	110332	Piston
5	1	1483	Hex Nut (Torque to 230-325 ft. lbs.)
6	1	6615	Self Aligning Bushing
7	1	45372*	Rod Wiper
8	1	4908*	O'Ring
9	1	45225*	Poly-Pak Seal
10	1	4531*	Back-Up Washer
11	1	45555*	O'Ring
12	1	4641*	O'Ring
13	1	45244*	Piston Ring
14	1	45245*	O'Ring
15	1	68721	Self Aligning Bushing

NOTE: Seal Kit #45550 includes all parts marked with an asterisk (*). Parts are not sold separately.

11327 1-12-09

6120 BOOM CYLINDER ASSEMBLY

ASSEMBLY #109372



6120 BOOM CYLINDER ASSEMBLY

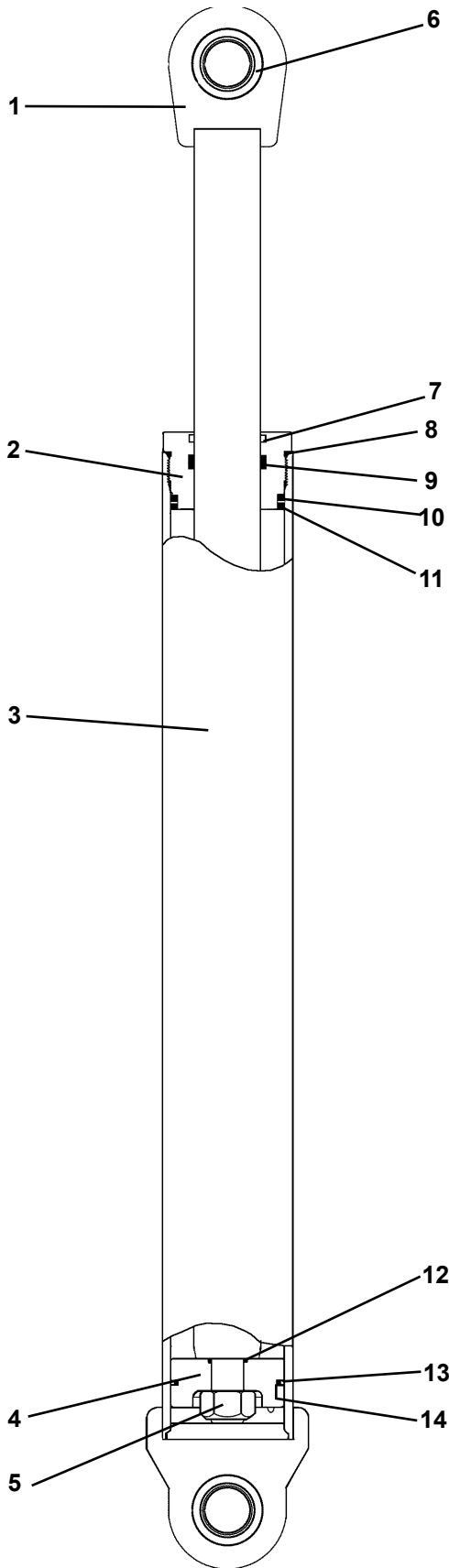
ASSEMBLY #109372

<u>ITEM</u>	<u>REQ'D</u>	<u>PART NO.</u>	<u>DESCRIPTION</u>
1	1	109376	Cylinder Rod
2	1	77451	Cylinder Gland
3	1	109373	Cylinder Tube
4	1	109378	Piston
5	1	1483	Hex Nut (Torque to 230-325 ft. lbs.)
6	1	6615	Self Aligning Bushing
7	1	45370*	Rod Wiper
8	1	45412*	O'Ring
9	1	45119*	Poly-Pak Seal
10	1	45243*	Back-Up Washer
11	1	45242*	O'Ring
12	1	4641*	O'Ring
13	1	45244*	Piston Ring
14	1	45245*	O'Ring
15	1	68721	Self Aligning Bushing

NOTE: Seal Kit #45415 includes all parts marked with an asterisk (*). Parts are not sold separately.

6100 DIPPER CYLINDER ASSEMBLY

ASSEMBLY #110333



11324 1-12-09

6100 DIPPER CYLINDER ASSEMBLY

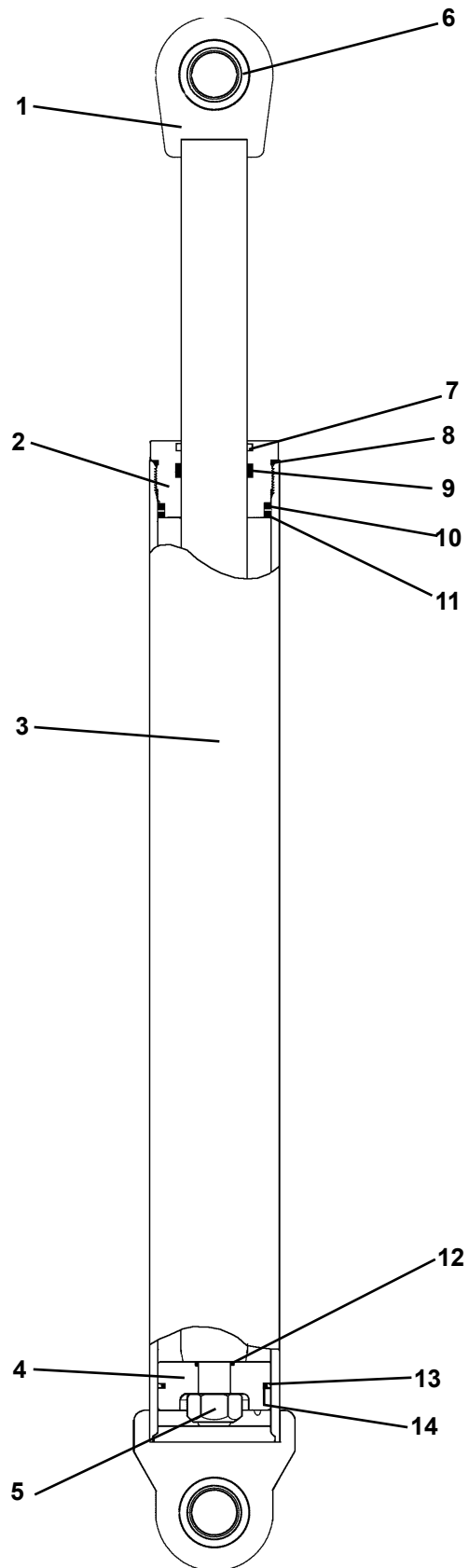
ASSEMBLY #110333

<u>ITEM</u>	<u>REQ'D</u>	<u>PART NO.</u>	<u>DESCRIPTION</u>
1	1	110337	Cylinder Rod
2	1	77451	Cylinder Gland
3	1	110334	Cylinder Tube
4	1	85461	Piston
5	1	1483	Hex Nut (Torque to 230-325 ft. lbs.)
6	2	6615	Self Aligning Bushing
7	1	45370*	Rod Wiper
8	1	45412*	O'Ring
9	1	45119*	Poly-Pak Seal
10	1	45243*	Back-Up Washer
11	1	45242*	O'Ring
12	1	4641*	O'Ring
13	1	45244*	Piston Ring
14	1	45245*	O'Ring

NOTE: Seal Kit #45415 includes all parts marked with an asterisk (*). Parts are not sold separately.

6120 DIPPER CYLINDER ASSEMBLY

ASSEMBLY #109381



11332 1-12-09

6120 DIPPER CYLINDER ASSEMBLY

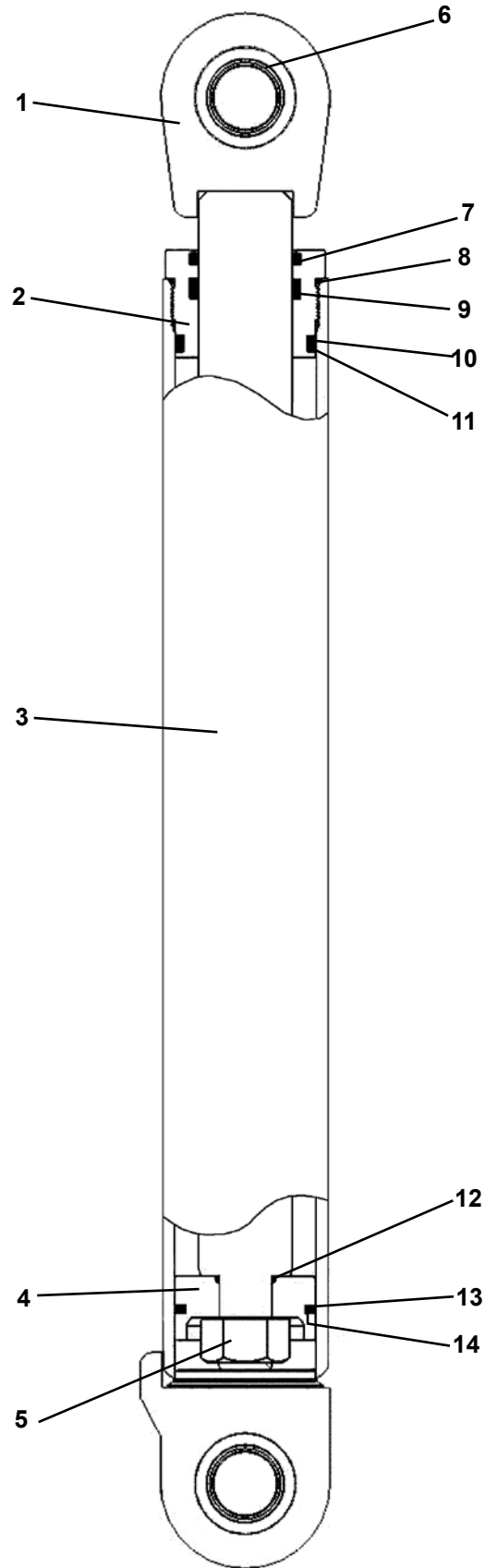
ASSEMBLY #109381

<u>ITEM</u>	<u>REQ'D</u>	<u>PART NO.</u>	<u>DESCRIPTION</u>
1	1	109385	Cylinder Rod
2	1	109387	Cylinder Gland
3	1	109382	Cylinder Tube
4	1	55904	Piston
5	1	1483	Hex Nut (Torque to 230-325 ft. lbs.)
6	2	6615	Self Aligning Bushing
7	1	45364*	Rod Wiper
8	1	45412*	O'Ring
9	1	45117*	Poly-Pak Seal
10	1	45243*	Back-Up Washer
11	1	45242*	O'Ring
12	1	4641*	O'Ring
13	1	45244*	Piston Ring
14	1	45245*	O'Ring

NOTE: Seal Kit #45992 includes all parts marked with an asterisk (*). Parts are not sold separately.

6100 BUCKET CYLINDER ASSEMBLY

ASSEMBLY #110340



11328 1-12-09

6100 BUCKET CYLINDER ASSEMBLY

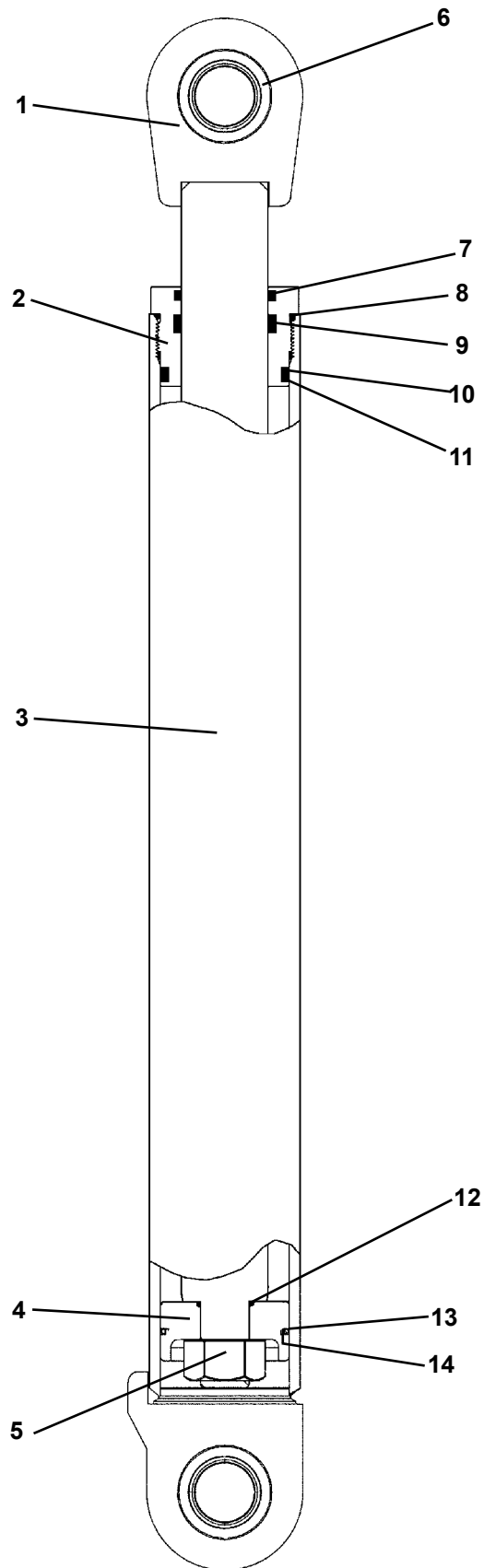
ASSEMBLY #110340

<u>ITEM</u>	<u>REQ'D</u>	<u>PART NO.</u>	<u>DESCRIPTION</u>
1	1	110344	Cylinder Rod
2	1	77444	Cylinder Gland
3	1	110341	Cylinder Tube
4	1	55904	Piston
5	1	1484	Hex Nut (Torque to 230-325 ft. lbs.)
6	2	6615	Self Aligning Bushing
7	1	45364*	Rod Wiper
8	1	4908*	O'Ring
9	1	45117*	Poly-Pak Seal
10	1	4631*	Back-Up Washer
11	1	45555*	O'Ring
12	1	4865*	O'Ring
13	1	4569*	Piston Ring
14	1	4570*	O'Ring

NOTE: Seal Kit #45547 includes all parts marked with an asterisk (*). Parts are not sold separately.

6120 BUCKET CYLINDER ASSEMBLY

ASSEMBLY #109389



11330 1-12-09

6120 BUCKET CYLINDER ASSEMBLY

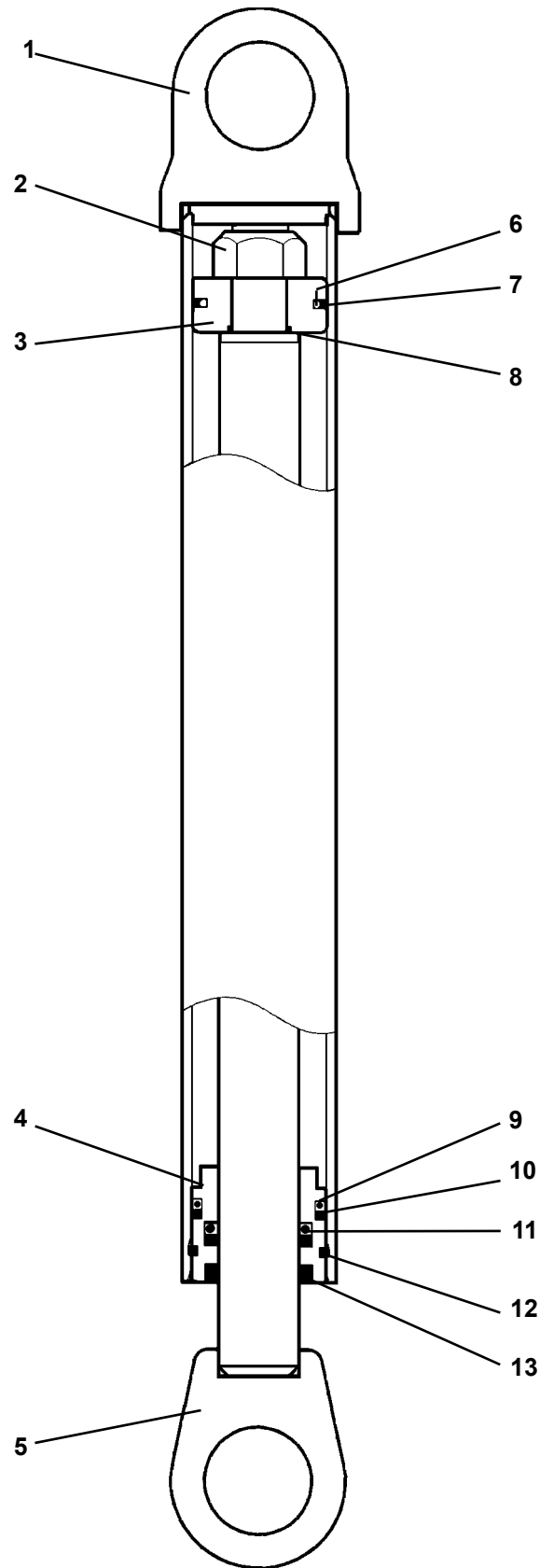
ASSEMBLY #109389

<u>ITEM</u>	<u>REQ'D</u>	<u>PART NO.</u>	<u>DESCRIPTION</u>
1	1	109393	Cylinder Rod
2	1	77444	Cylinder Gland
3	1	109390	Cylinder Tube
4	1	55904	Piston
5	1	1484	Hex Nut (Torque to 230-325 ft. lbs.)
6	2	6615	Self Aligning Bushing
7	1	45364*	Rod Wiper
8	1	4908*	O'Ring
9	1	45117*	Poly-Pak Seal
10	1	4631*	Back-Up Washer
11	1	45555*	O'Ring
12	1	4865*	O'Ring
13	1	4569*	Piston Ring
14	1	4570*	O'Ring

NOTE: Seal Kit #45547 includes all parts marked with an asterisk (*). Parts are not sold separately.

HYDRAULIC THUMB CYLINDER ASSEMBLY

ASSEMBLY #16955



11348 1-14-09

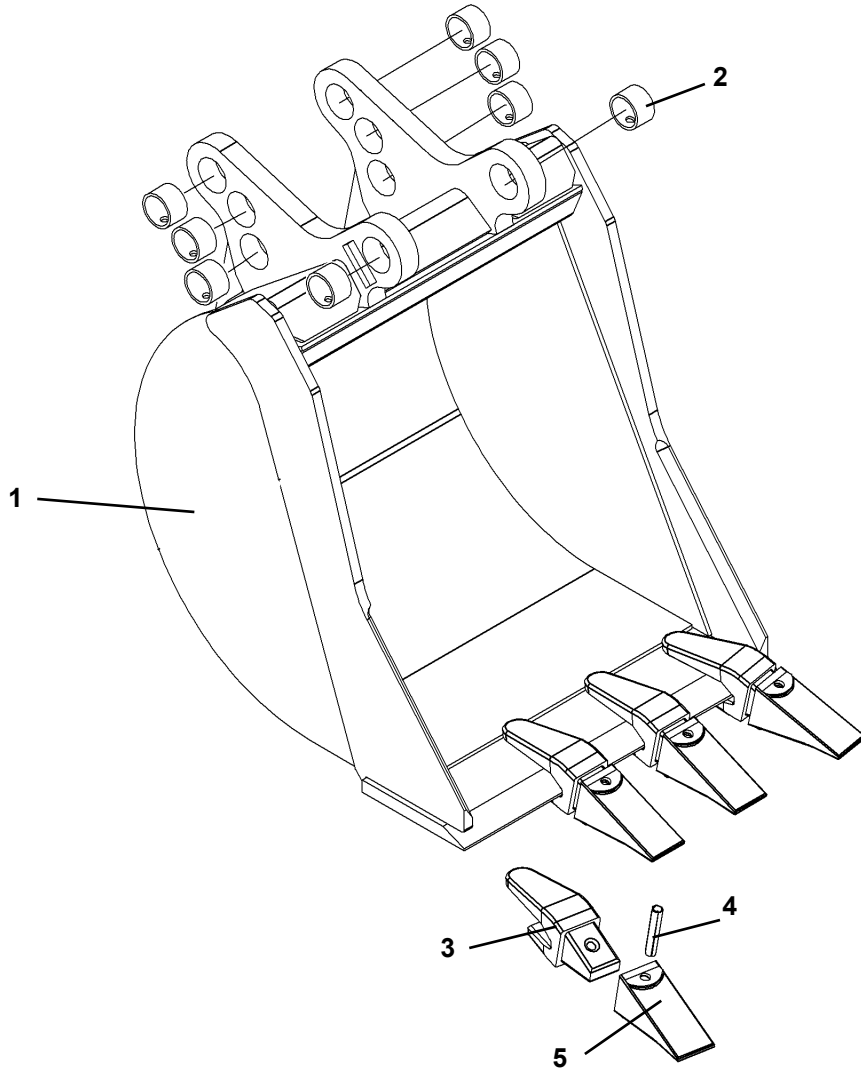
HYDRAULIC THUMB CYLINDER ASSEMBLY

ASSEMBLY #16955

<u>ITEM</u>	<u>REQ'D</u>	<u>PART NO.</u>	<u>DESCRIPTION</u>
1	1	16956	Cylinder Tube
2	1	1483	Hex Nut (Torque to 230-325 ft. lbs.)
3	1	50252	Piston
4	1	64531	Cylinder Gland
5	1	16958	Cylinder Rod
6	1	4645*	O'Ring
7	1	4644*	Piston Ring
8	1	4641*	O'Ring
9	1	4509*	O'Ring
10	1	4510*	Back-Up Washer
11	1	45225*	Poly-Pak Seal
12	1	7165*	Gland Retainer Ring
13	1	4914*	Rod Wiper

NOTE: Seal Kit #4980 includes all parts marked with an asterisk (*). Parts are not sold separately.

BUCKET ASSEMBLIES



BUCKET ASSEMBLIES

<u>ITEM</u>	<u>REQ'D</u>	<u>PART NO.</u>	<u>DESCRIPTION</u>
1	-	110012	12" Bucket (Includes Teeth and Bushings)
		110016	16" Bucket (Includes Teeth and Bushings)
		110018	18" Bucket (Includes Teeth and Bushings)
		110024	24" Bucket (Includes Teeth and Bushings)
		110034	34" Bucket (Includes Teeth and Bushings)
		110036	36" Bucket (Includes Teeth and Bushings)
		110038	38" Bucket (Includes Teeth and Bushings)
2	8	6355	Replacement Bushing
3	Varies	74228*	Replacement Tooth Shank (Weld On)
4	Varies	74227*	Replacement Spiral Roll Pin
5	Varies	84863*	Replacement Tooth (Bolt On)

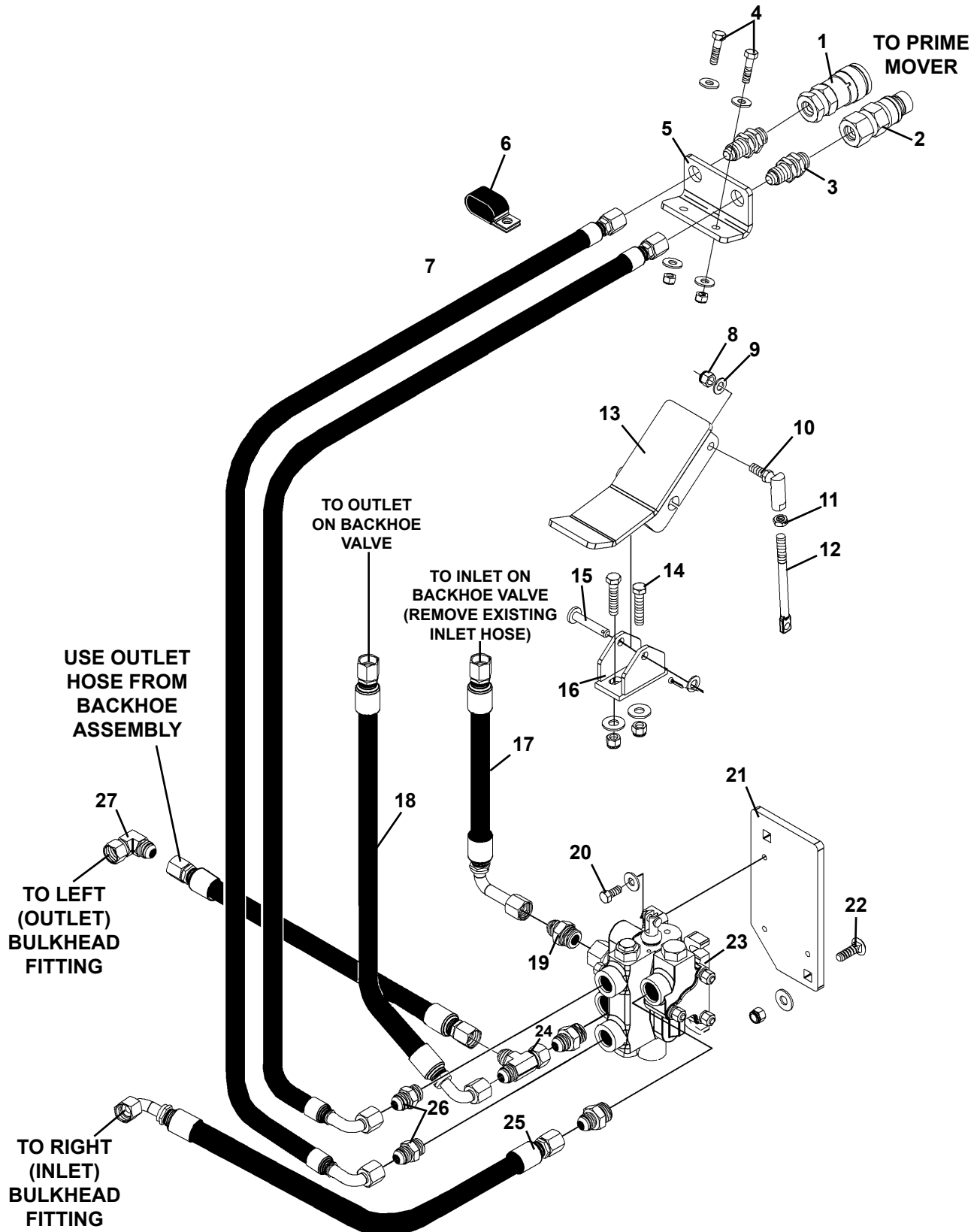
BUCKET SPECIFICATIONS				
BUCKET SIZE	TOOTH QTY	WEIGHT	STRUCK CAPACITY	RATED CAPACITY
12	3	125 LBS.	1.25 CU. FT.	1.53 CU. FT.
16	4	148 LBS.	1.72 CU. FT.	2.20 CU. FT.
18	4	156 LBS.	1.95 CU. FT.	2.54 CU. FT.
24	4	180 LBS.	2.65 CU. FT.	3.57 CU. FT.
34	7	238 LBS.	3.82 CU. FT.	5.31 CU. FT.
36	7	246 LBS.	4.05 CU. FT.	5.56 CU. FT.
38	7	255 LBS.	1.28 CU. FT.	5.99 CU. FT.

NOTE: Tooth and Shank Assembly #85003 includes one each of all parts marked with an asterisk (*).

2-WAY BOOM HYDRAULIC KIT

6100 BACKHOE KIT #111638

6120 BACKHOE KIT #111649



2-WAY BOOM HYDRAULIC KIT

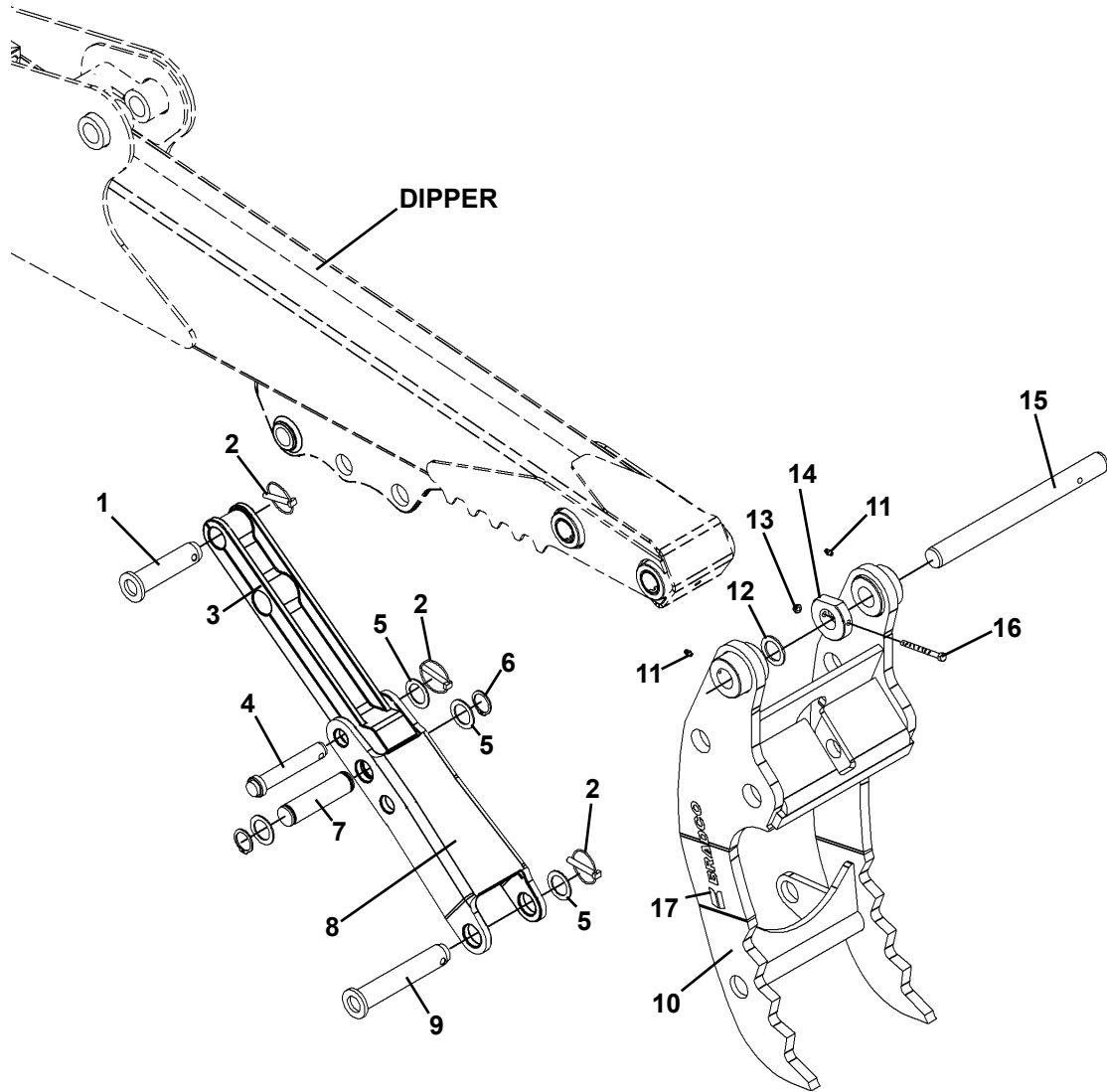
6100 BACKHOE KIT #111638

6120 BACKHOE KIT #111649

<u>ITEM</u>	<u>REQ'D</u>	<u>PART NO.</u>	<u>DESCRIPTION</u>
1	1	14175	Female Quick Coupler - .50" Body 8FBo
2	1	14176	Male Quick Coupler - .50" Body 8FBo
3	2	30195	Straight Bulkhead Fitting 8MJ-8MBo
4	2	1023	.31" UNC X 1.25" Hex Capscrew
	4	1513	.31" Flat Washer
	2	1753	.31"UNC Nylock Nut
5	1	112141	Mounting Bracket
6	1	82861	Hose Clamp
7	2	38581	Hose .38" X 132" 8FJX-8FJX 90° (6100 Backhoe Only)
	2	38589	Hose .38" X 156" 8FJX-8FJX 90° (6120 Backhoe Only)
8	1	1592	.38" UNF Nylock Nut
9	1	1525	.38" Flat Washer
10	1	5545	Ball Joint Fitting
11	1	1490	.38" UNF Hex Jam Nut
12	1	111642	Control Rod
13	1	111641	Pedal
14	2	1046	.38" UNC 1.75" Hex Capscrew
	2	1514	.38" Flat Washer
	2	1536	.38" UNC Nylock Nut
15	1	54418	Clevis Pin
	1	1525	.38" Flat Washer
	1	1611	Cotter Pin
16	1	15823	Pedal Pivot Base
17	1	38588	Hose .38" X 15" 8FJX-8FJX 90°L
18	1	38110	Hose .50" X 23" 8JFX-8JFX 90°
19	3	3270	Straight Connector 10MBo-8MJ
20	3	1021	.31" UNC X .75" Hex Capscrew
	3	1513	.31" Flat Washer
21	1	111639	Valve Mounting Plate
22	2	1829	.38" UNC X 1.25" Carriage Bolt
	2	1514	.38" Flat Washer
	2	1536	.38" UNC Nylock Nut
23	1	2266	Valve Assembly
24	1	3278	Tee 8MJ-8FJX-8MJ
25	1	38580	Hose .50" X 14.50" 8FJX-8FJX 90°
26	2	3103	Straight Connector 8MBo-8MJ
27	1	3149	90° Elbow 8MJ-8MBo

OPTIONS

FIXED THUMB ASSEMBLIES #111028 & #111029



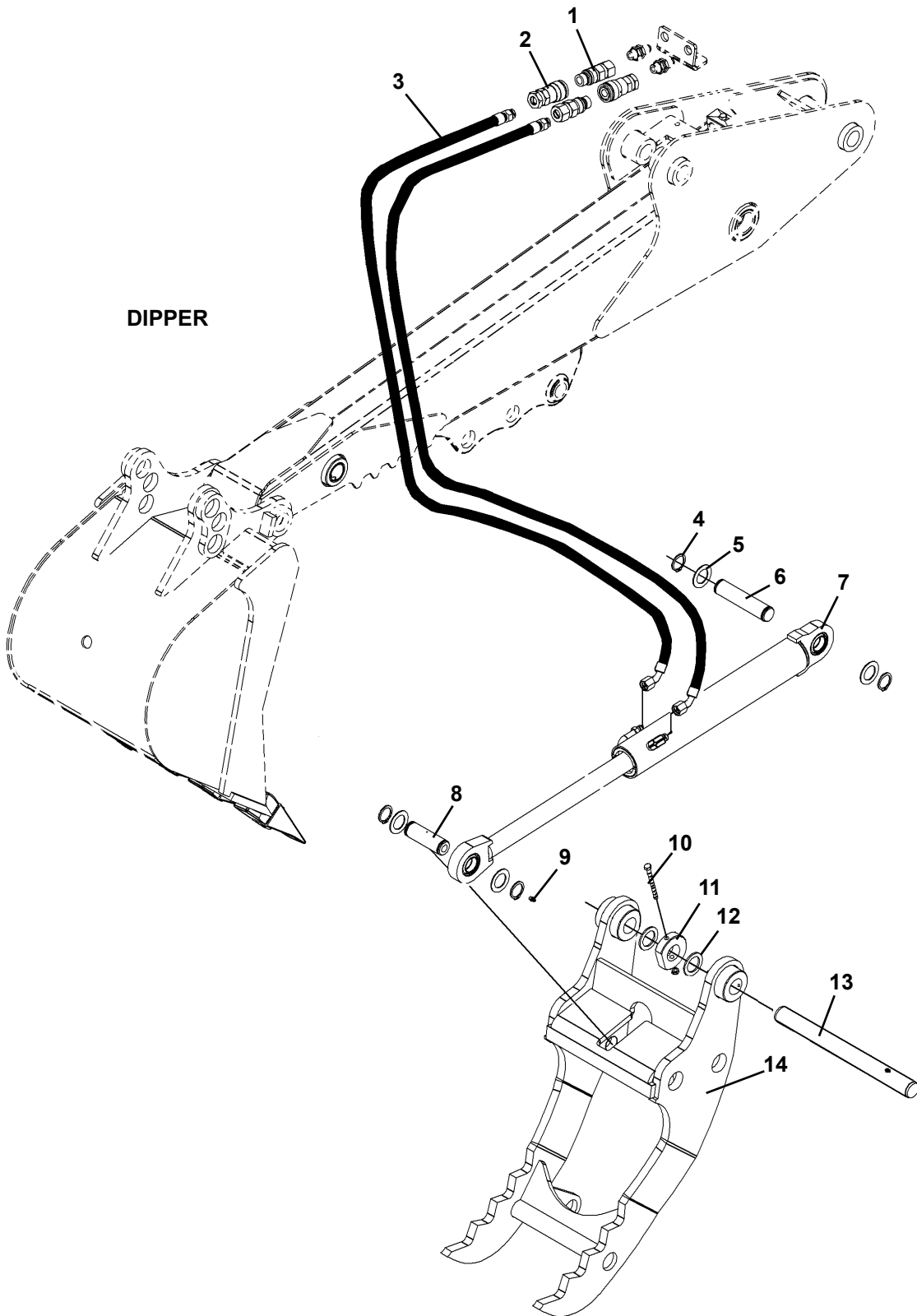
OPTIONS

FIXED THUMB ASSEMBLIES #111028 & #111029

<u>ITEM</u>	<u>REQ'D</u>	<u>PART NO.</u>	<u>DESCRIPTION</u>
1	1	17168	Pin 1.38" X 4.47"
2	3	10044	Klik Pin
3	1	107133	Long Arm
4	1	107443	Pin 1.00" X 4.86"
5	4	64724	Thrust Washer
6	2	1650	Snap Ring
7	1	107442	Pin 1.38" X 4.81"
8	1	107134	Short Arm
9	1	16459	Pin 1.38" X 6.72"
10	1	16460	Thumb
11	2	6616	Grease Fitting
12	1	64725	Thrust Washer
13	1	1942	.31" UNC Lock Nut
14	1	111027	Pin Lock
15	1	16453	Pin 1.38" X 15.00"
16	1	1282	.31" UNF X 3.50" Hex Capscrew
17	2	40113	Bradco Logo

OPTIONS

HYDRAULIC THUMB ASSEMBLIES #112138 & #112139



11344 1-14-09

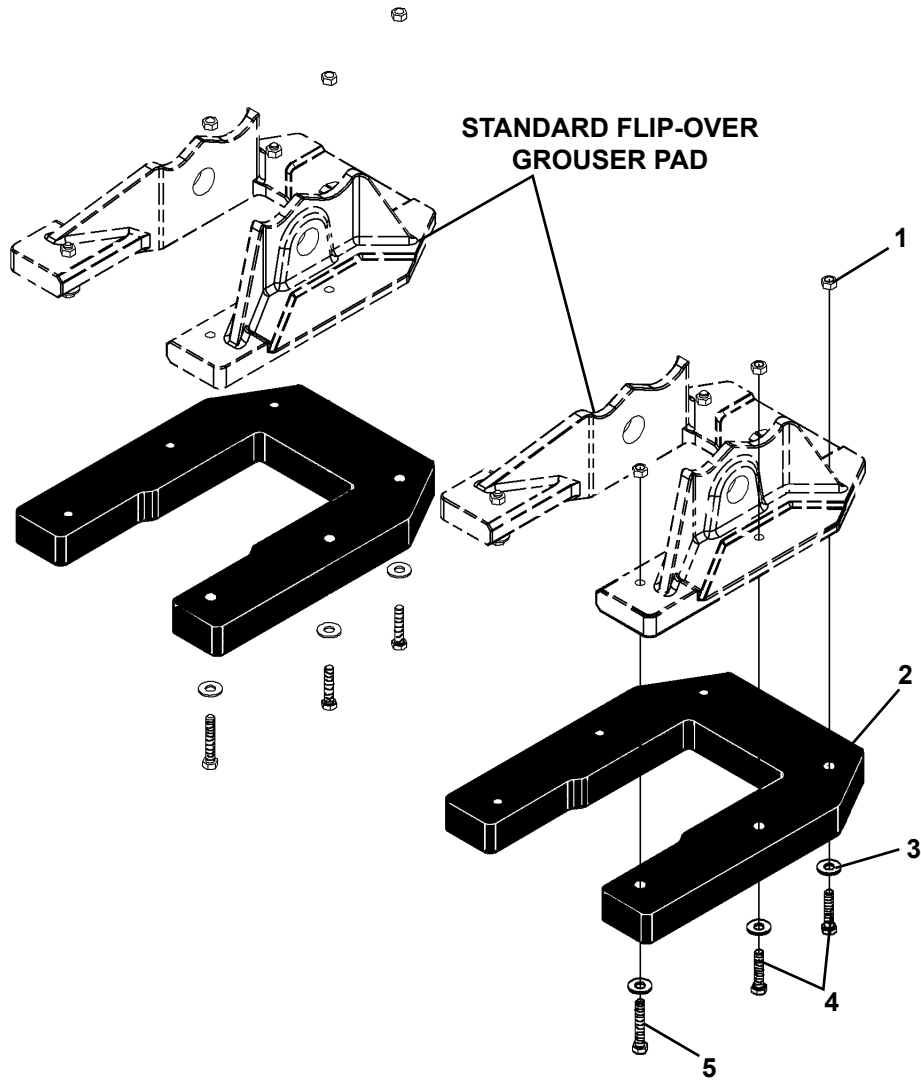
OPTIONS

HYDRAULIC THUMB ASSEMBLIES #112138 & #112139

<u>ITEM</u>	<u>REQ'D</u>	<u>PART NO.</u>	<u>DESCRIPTION</u>
1	2	14176	Male Coupler .50" Body 8FBo
2	2	14175	Female Coupler .50" Body 8FBo
3	2	38593	Hose .50" X 40" 8MBo-6FJX 45°
4	4	1652	Snap Ring
5	4	57693	Thrust Washer
6	1	16702	Pin 1.25" X 5.13"
7	1	16955	Cylinder Assembly
8	1	16703	Pin 1.25" X 3.44"
9	4	6616	Grease Fitting
10	1	1282	.31" UNF X 3.50" Hex Capscrew
	1	1942	.31" UNC Lock Nut
11	1	111027	Pin Lock
12	2	64725	Thrust Washer
13	1	16453	Pin 1.38" X 15.00"
14	1	16460	Thumb

OPTIONS

RUBBER STREET PAD KIT #110322



OPTIONS

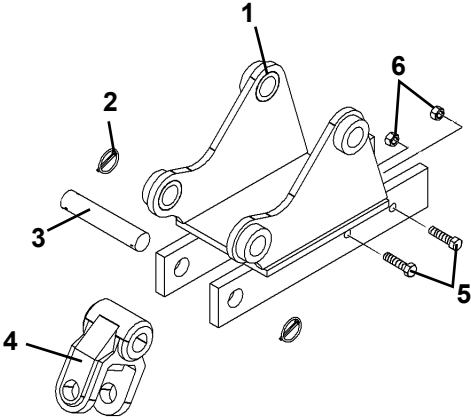
RUBBER STREET PAD KIT #110322

<u>ITEM</u>	<u>REQ'D</u>	<u>PART NO.</u>	<u>DESCRIPTION</u>
1	12	1837	.38" UNC Deformed Lock Nut
2	2	109350	Rubber Grouser Pad
3	12	1514	.38" Flat Washer
4	8	1046	.38" UNC X 1.75" Hex Capscrew
5	4	1048	.38" UNC X 2.25" Hex Capscrew

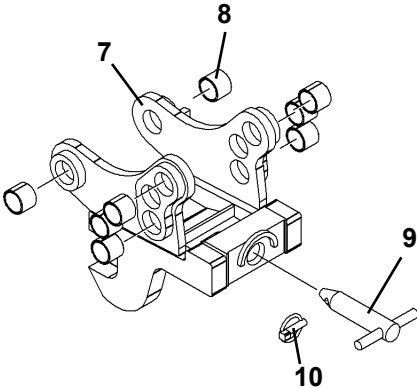
OPTIONS

BUCKET MOUNTS

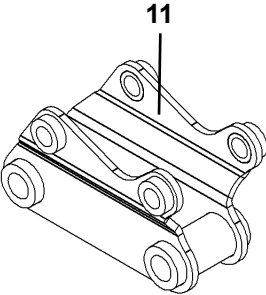
A



B



C



OPTIONS
BUCKET MOUNTS

A) AUGER MOUNTING KIT #111644

<u>ITEM</u>	<u>REQ'D</u>	<u>PART NO.</u>	<u>DESCRIPTION</u>
1	1	111643	Auger Mount
2	2	21169	Klik Pin
3	1	22255	Pivot Pin
4	1	21694	Swivel
5	4	1092	.50" UNC X 2.00" Hex Capscrew (Used for attaching cradle.)
6	4	1228	.50" UNC Hex Nut

B) C&P QUICK HITCH ASSEMBLY #111644

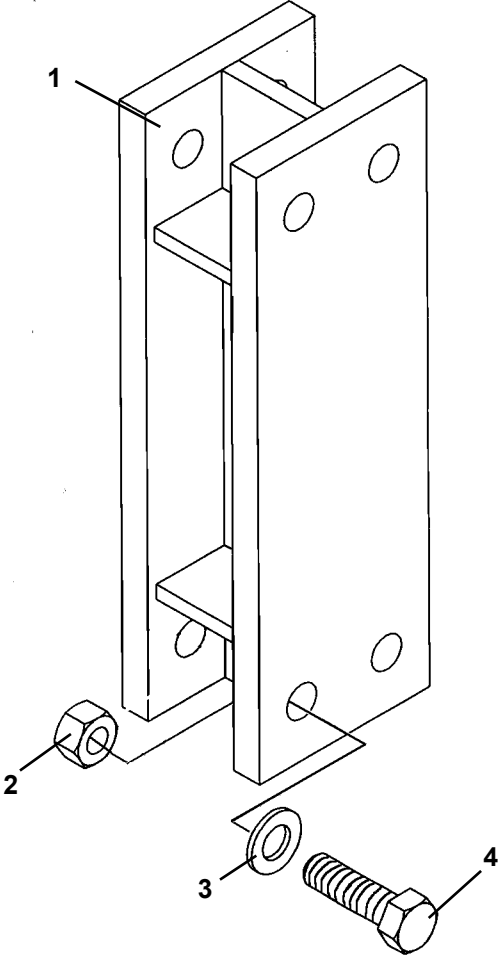
<u>ITEM</u>	<u>REQ'D</u>	<u>PART NO.</u>	<u>DESCRIPTION</u>
7	1	110971	Quick Hitch
8	8	6355	Bushing
9	1	57496	Klik Pin
10	1	15491	Pin

C) IPC HAMMER MOUNT

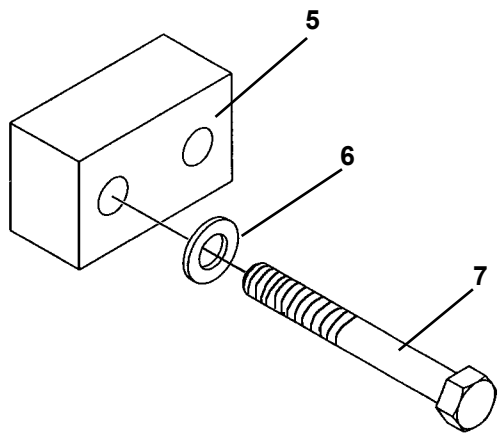
<u>ITEM</u>	<u>REQ'D</u>	<u>PART NO.</u>	<u>DESCRIPTION</u>
11	1	110979	Hammer Mount

OPTIONS SPACER KITS

A



B



OPTIONS
SPACER KITS

A 4" SPACER KIT #72854

<u>ITEM</u>	<u>REQ'D</u>	<u>PART NO.</u>	<u>DESCRIPTION</u>
1	2	72855	Spacer Bracket
2	4	1231	.75" UNC Hex Nut
3	4	1649	.75" Hard Flat Washer
4	4	1141	.75" UNC X 2.50" Hex Capscrew

B 2" SPACER KIT #83781

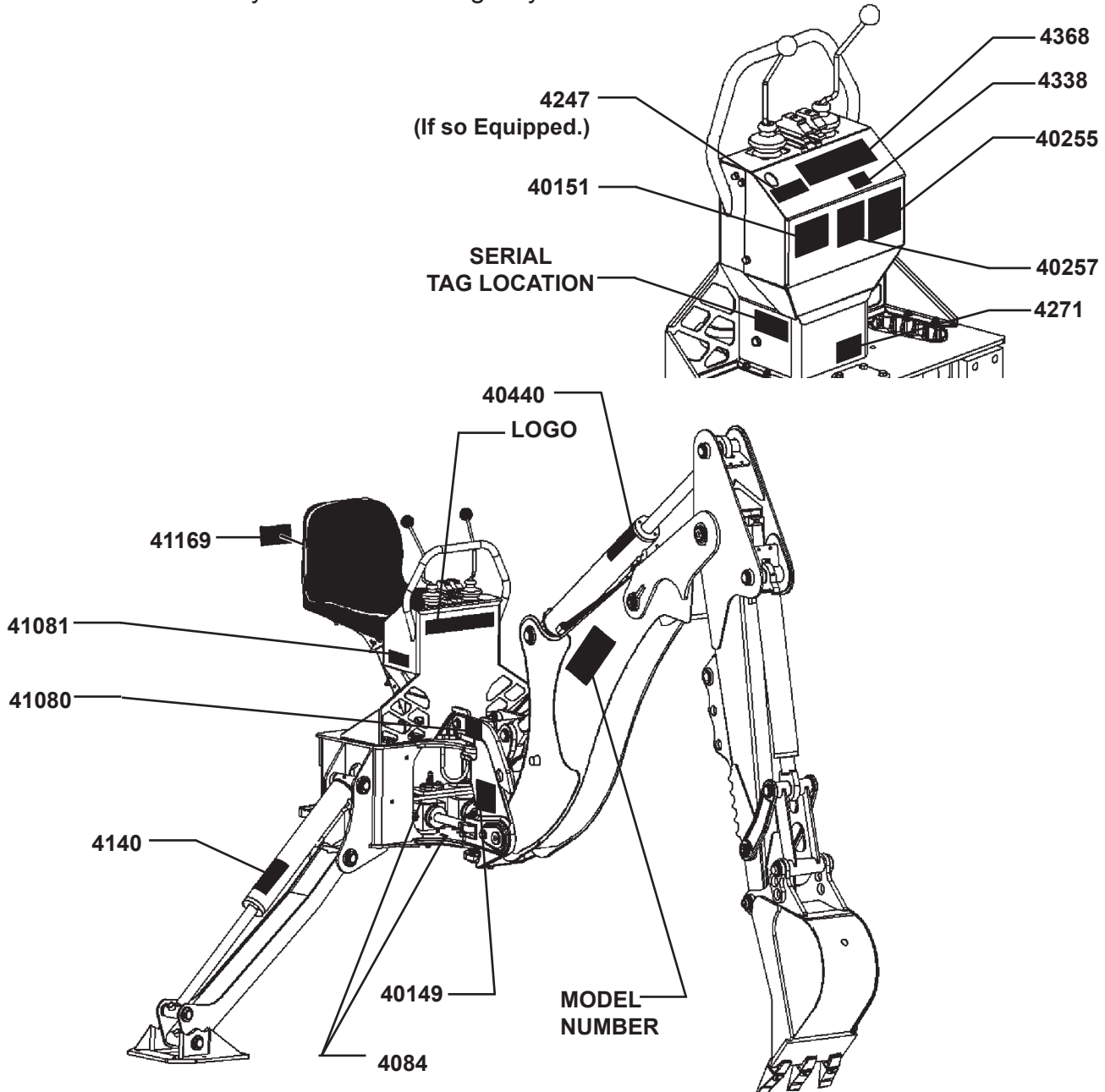
<u>ITEM</u>	<u>REQ'D</u>	<u>PART NO.</u>	<u>DESCRIPTION</u>
5	4	87913	Spacer Block
6	8	1649	.75" Hard Flat Washer
7	8	1141	.75" UNC X 3.75" Hex Capscrew

DECALS

DECAL PLACEMENT

GENERAL INFORMATION

The following diagrams show the location of all the decals used on the backhoes. The decals are identified by their part numbers, with the reductions of the actual decals shown on the following pages. Use this information to order replacements for lost or damaged decals. Be sure to read all decals before operating the backhoe. They contain information you need to know for both safety and backhoe longevity.



IMPORTANT: Keep all safety decals clean and legible. Replace all missing, illegible or damaged safety decals. When replacing parts with safety decals attached, the safety decals must also be replaced.

REPLACING SAFETY DECALS: Clean the area of application with a nonflammable solvent, then wash the same area with soap and water. Allow the surface to dry. Remove the backing from the safety decal, exposing the adhesive surface. Apply the safety decal to the position shown in the diagram, and smooth out any bubbles.

11352 7-7-10-2

DECALS



PART #40151
WARNING! HIGH PRESSURE FLUID



PART #40440
WARNING! CALL BEFORE YOU DIG



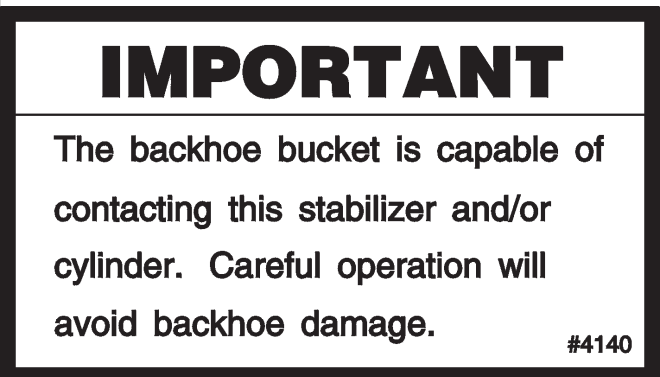
PART #40149
DANGER! PINCH POINT



PART #41169
DANGER! BACKHOE SECURE



PART #40255
WARNING! OPERATIONAL



PART #4140
IMPORTANT

DECALS

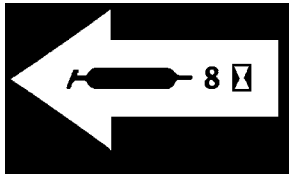
IMPORTANT
 TO PREVENT BACKHOE DAMAGE:

- DO NOT ATTACH TOW CHAIN TO DIPPER OR BUCKET.
- DO NOT REPEATEDLY SLAM SWING POST INTO SWING STOPS.

PREPARATION FOR STORAGE

LUBRICATE ALL GREASE POINTS. LEAVE AS MANY CYLINDERS IN CLOSED POSITION AS POSSIBLE. COVER ALL EXPOSED CYLINDER RODS WITH A LIGHT COAT OF GREASE. #40257

PART #40257
IMPORTANT

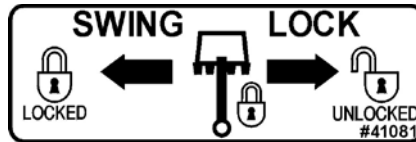


PART #4084
GREASE 8 HOURS

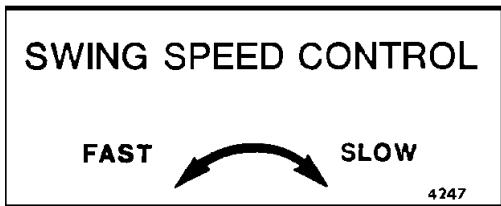
SERVICE INFORMATION 4271

THIS IS AN INLINE 90 MICRON SINTERED BRONZE FILTER. IF PLUGGED OR PARTIALLY FILLED IT WILL REDUCE BACKHOE PERFORMANCE. REMOVE AND WASH OUT REGULARLY. REPLACE ELEMENT #45689 IF DIFFICULT TO BLOW THROUGH AFTER WASHING. SEE FULL INSTRUCTIONS IN THE OWNERS MANUAL.

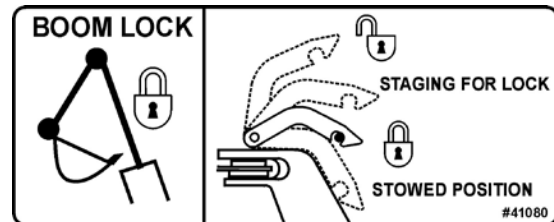
PART #4271
INLINE FILTER



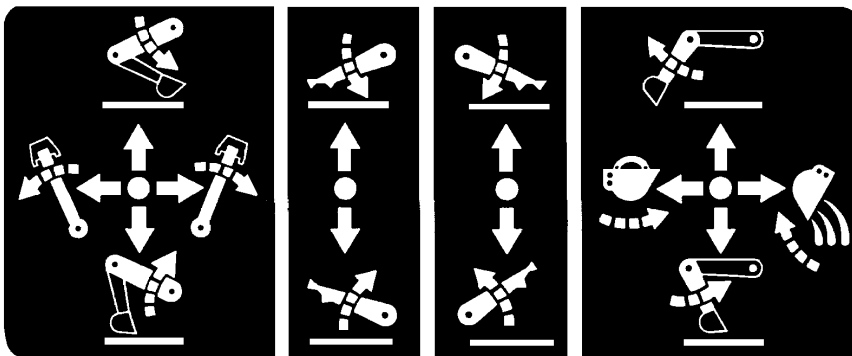
PART #41081
SWING LOCK



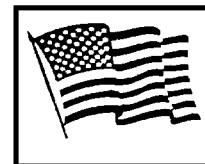
PART #4247
SWING SPEED CONTROL



PART #41080
BOOM LOCK



PART #4368
OPERATING CONTROL DECAL



PART #4338
MADE IN USA

NOTE: CONTACT YOUR LOCAL DEALER FOR MODEL NUMBER AND LOGO DECALS.

