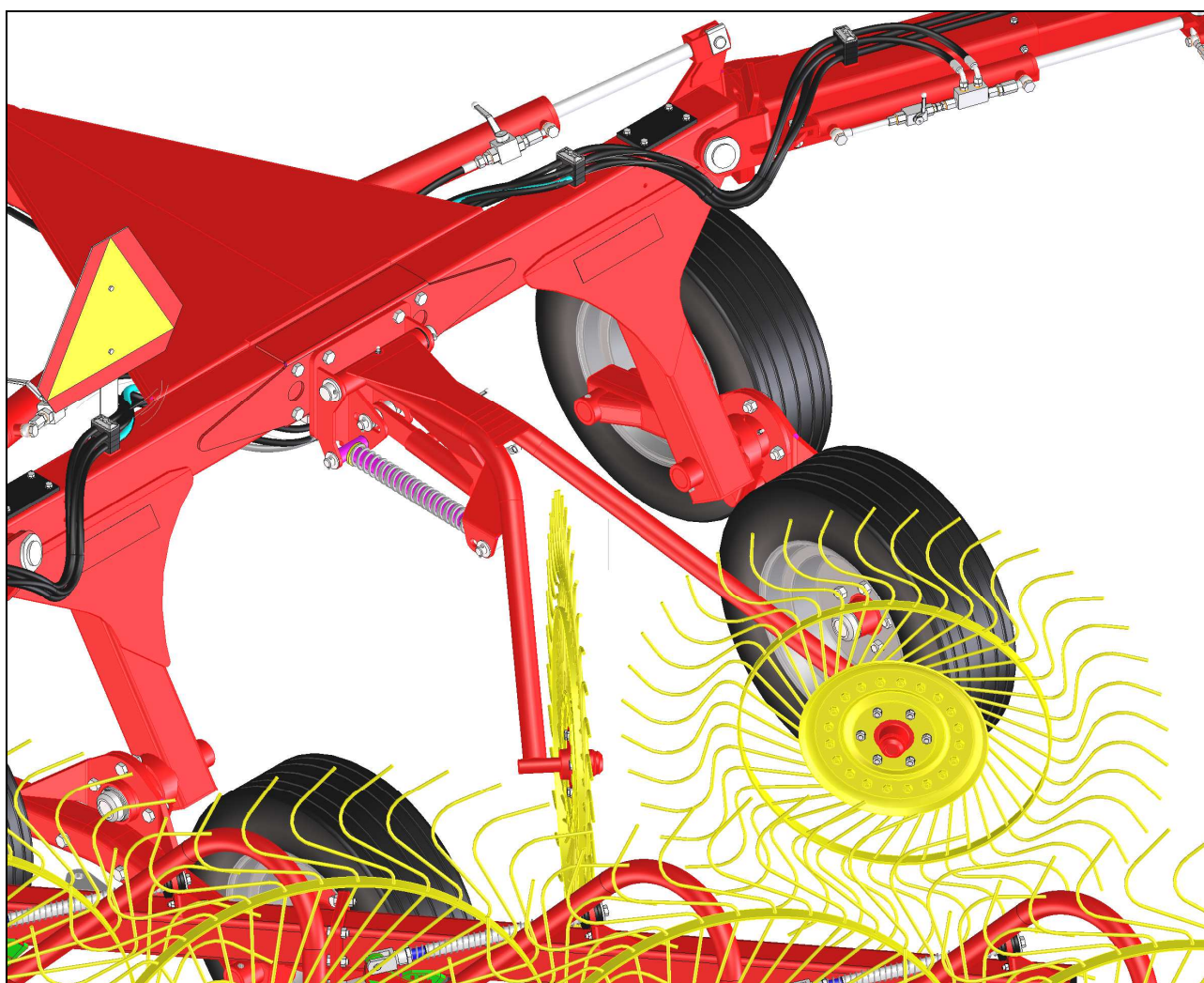




AGRICULTURAL MACHINERY  
**sitrex**®  
Spa

## REAR CENTER WHEELS KIT 260.698



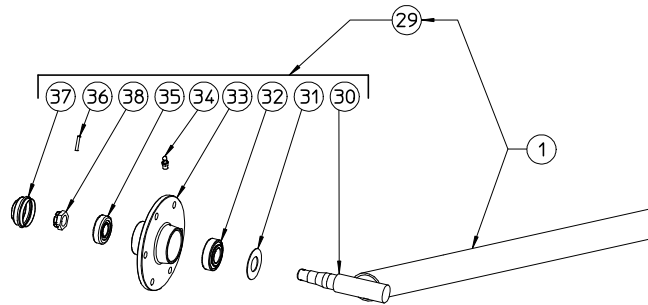
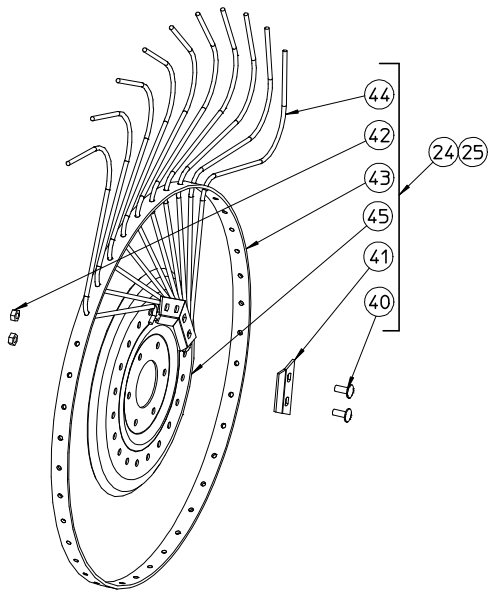
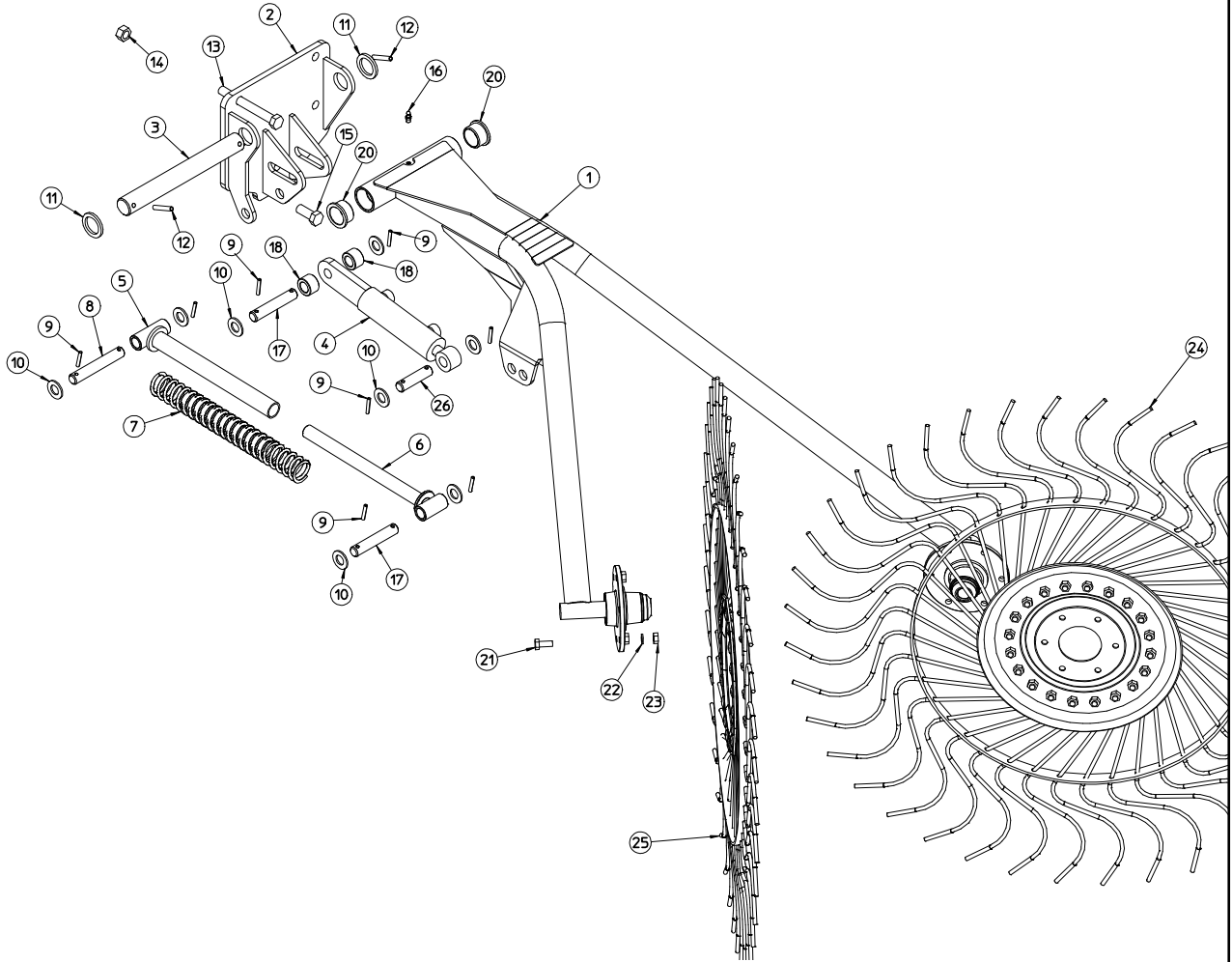
# QRX 12/14



---

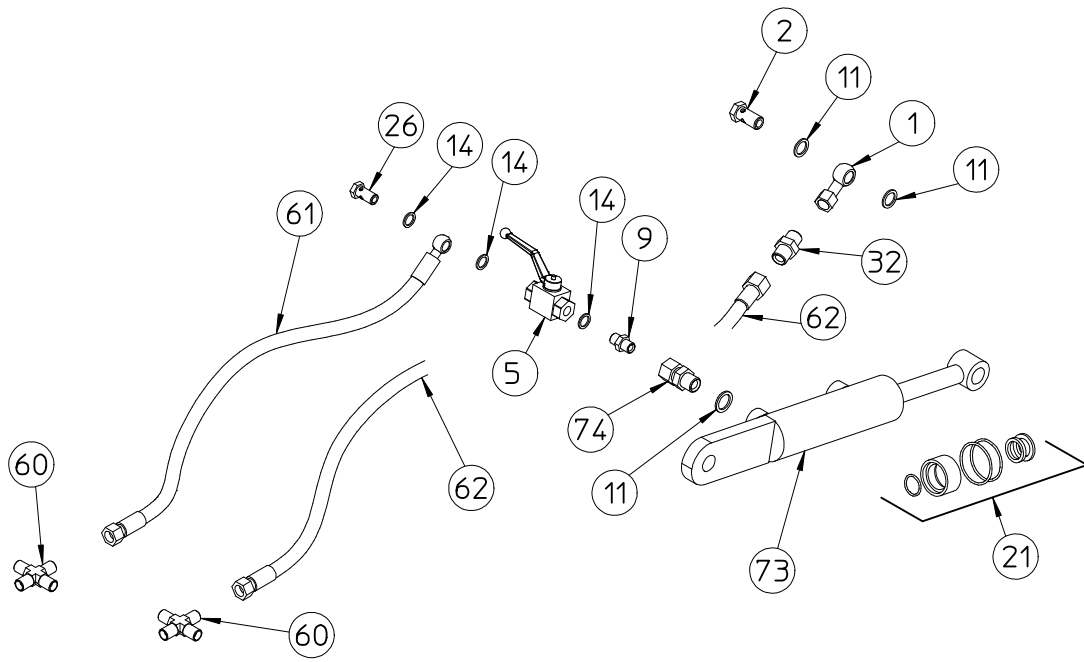
Order spare parts  
with the serial number of the machine.

# REAR CENTER WHEELS KIT 260.698



REAR CENTER WHEEL KIT 260.698				
Pos.	PART. NO	Qty	DESCRIPTION	NOTE
1	260.158	1	ARM	
2	260.160	1	SUPPORT	
3	260.159	1	PIN	
4	230.375	1	CYLINDER	
5	260.161	1	TIE ROD TUBE	
6	260.162	1	TIE ROD	
7	250.244	1	SPRING	
8	260.163	1	PIN	
9	600.538	8	SPING PIN $\phi$ 6x35 DIN 1481	
10	600.632	8	WASHER $\phi$ 21 DIN 125A	
11	200.028	2	WASHER $\phi$ 35	
12	600.027	2	SPING PIN $\phi$ 8x50 DIN 1481	
13	600.219	4	SCREW M16x150 DIN 931	
14	600.080	5	NUT M16 DIN 980	
15	600.035	1	SCREW M16x40 DIN 933	
16	600.124	1	GREASE NIPPLE M6	
17	230.378	2	PIN	
18	230.377	2	SPACER	
20	200.029	2	BUSH	
21	600.006	12	SCREW M10x25 DIN 603	
22	600.024	12	SPRING WASHER D 10,5 ( DIN 127B)	
23	600.010	12	SCREW M10 x 25 DIN 933	
24	250.453	1	WHEEL ASSY L.H. 44" (TINE DIA 0,276" 7mm)	Mounted on RH side
25	250.452	1	WHEEL ASSY R.H. 44" (TINE DIA 0,276" 7mm)	Mounted on LH side
26	260.164	1	PIN	
29	205.041	1	HUB ASSY	
30	205.277	1	PIN	
31	600.011	1	DUST COVER	
32	600.012	1	BEARING 30205	
33	600.013	1	WHEEL HUB	
34	600.034	1	GREASE NIPPLE M8	
35	600.014	1	BEARING 30204	
36	600.301	1	SPLIT PIN $\phi$ 3x30 DIN 94	
37	600.016	1	SAFETY CAP	
38	600.015	1	LOCKING NUT M18x1,5	
40	600.005	20	SCREW M10x25 DIN 603	
41	200.012	10	TINE CLAMP	
42	600.029	20	NUT M10 DIN 980	
43	230.352	1	RIM	
44	230.349	40	TINE DIA 0,276" (7mm)	
45	200.010	1	FLANGE	

REAR CENTER WHEELS KIT 260.698 HYDRAULIC SET



---

**HYDRAULIC SET**

<b>Pos.</b>	<b>PART.NO</b>	<b>Qty</b>	<b>DESCRIPTION</b>	<b>NOTE</b>
1	630.315	1	BANJO 3/8"	
2	600.040	1	FITTING 3/8"	
5	620.492	1	VALVE 1/4" 170 bar	
9	600.883	1	NIPPLE 1/4"-3/8"	
11	620.452	3	COPPER WASHER 3/8"	
14	630.376	3	COPPER WASHER 1/4"	
21	630.325	1	SET OF GASKET	
26	600.820	1	FITTING 1/4"	
32	200.192	1	NIPPLE 3/8"- 3/8" OREFICE 0,8	
60	620.978	2	FITTING CROSS 1/4" MALE	
61	640.285	1	HOSE 1/4" FO L. 640mm	
62	640.284	1	HOSE 1/4" FF L. 730mm	
73	230.375	1	CYLINDER	
74	600.271	1	FITTING 3/8" MALE-3/8" FEMALE	

## 1.1 REAR CENTER WHEELS KIT - ASSEMBLY

The center rake wheel kit is used to move the hay in the central part of the windrow.

The hydraulic cylinder is operated in parallel with the raising of the rake arms, therefore no further operations are necessary.

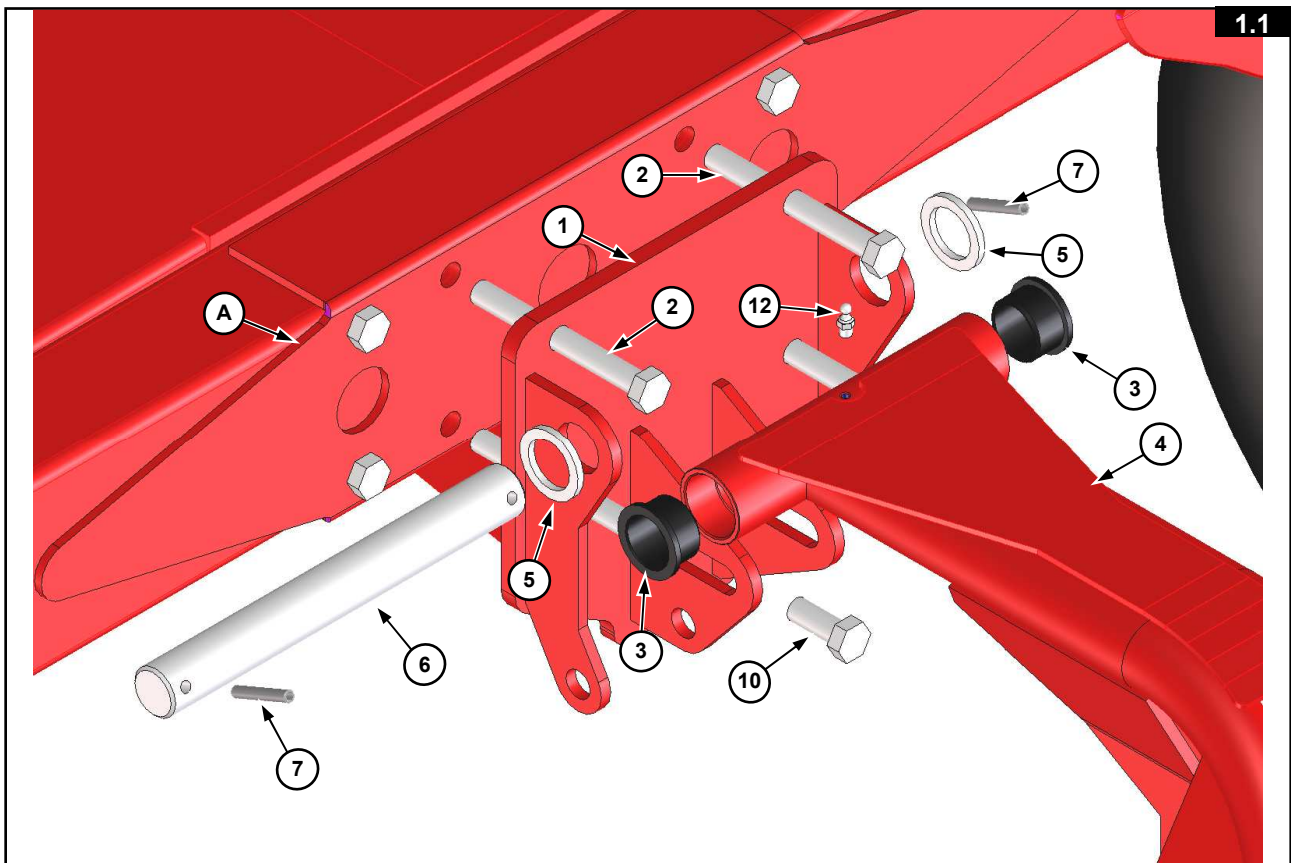
The center rake wheel normally moves very fast when working properly.

The compensating spring must be adjusted with the two holes (9) in Fig.1.3 in raking arm, so as to obtain the right pressure on the ground according to the desired working conditions. The shorter spring length decrease the pressure on the ground.

If the working conditions do not require the use of the center rake wheel, close the valve (5) in Fig.1.4 after having positioned the rake wheel arm in the raised position.

To lock the center rake wheel kit:

- 1) Activate the tractor hydraulic system and raise the fold-up arms up to the stops.
- 2) Turn off the tractor motor and remove the key.
- 3) Wait until all moving parts have stopped.
- 4) Close the valve (5) in Fig.1.4



To assemble the center rake wheel kit, proceed as follows (Fig. 1.1):

- 1) Remove the four bolts that connect the drawbar (A) at the four holes in the plate (1).
- 2) Fasten the plate (1) using the long bolts (2) and the bolt (10) and nuts M16.
- 3) Insert the nylon bush (3) into arm (4).
- 4) Attach the arm (4) to the plate (1) using the pin (6), washers (5) and spring pins (7). Mount grease nipple (12).

Pos.	Qty.	Description
2	4	BOLT TE M16 X150 (5/8"x5"57/64) DIN 931 8.8
3	2	NYLON BUSH
5	2	FLAT WASHER $\phi 35$ ( $\phi 1 \frac{3}{8}$ ")
6	1	PIN $\phi 35$ ( $\phi 1 \frac{3}{8}$ ")

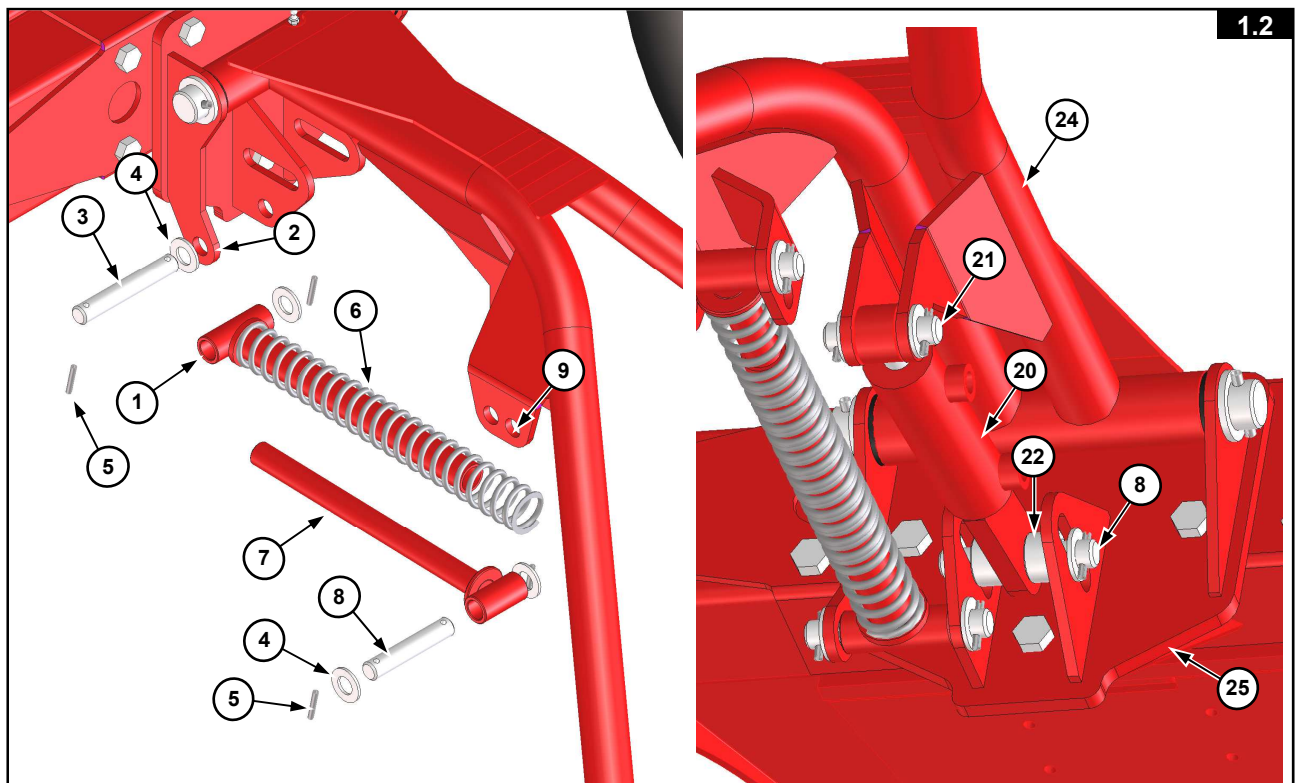


7	2	SPRING PIN $\varnothing 8 \times 50$ (5/16"x2") DIN 1481
10	1	BOLT M16x40 (5/8"x1"9/16) DIN 933 8.8
12	1	GREASE NIPPLE M6

Proceed as follows (Fig.1.2):

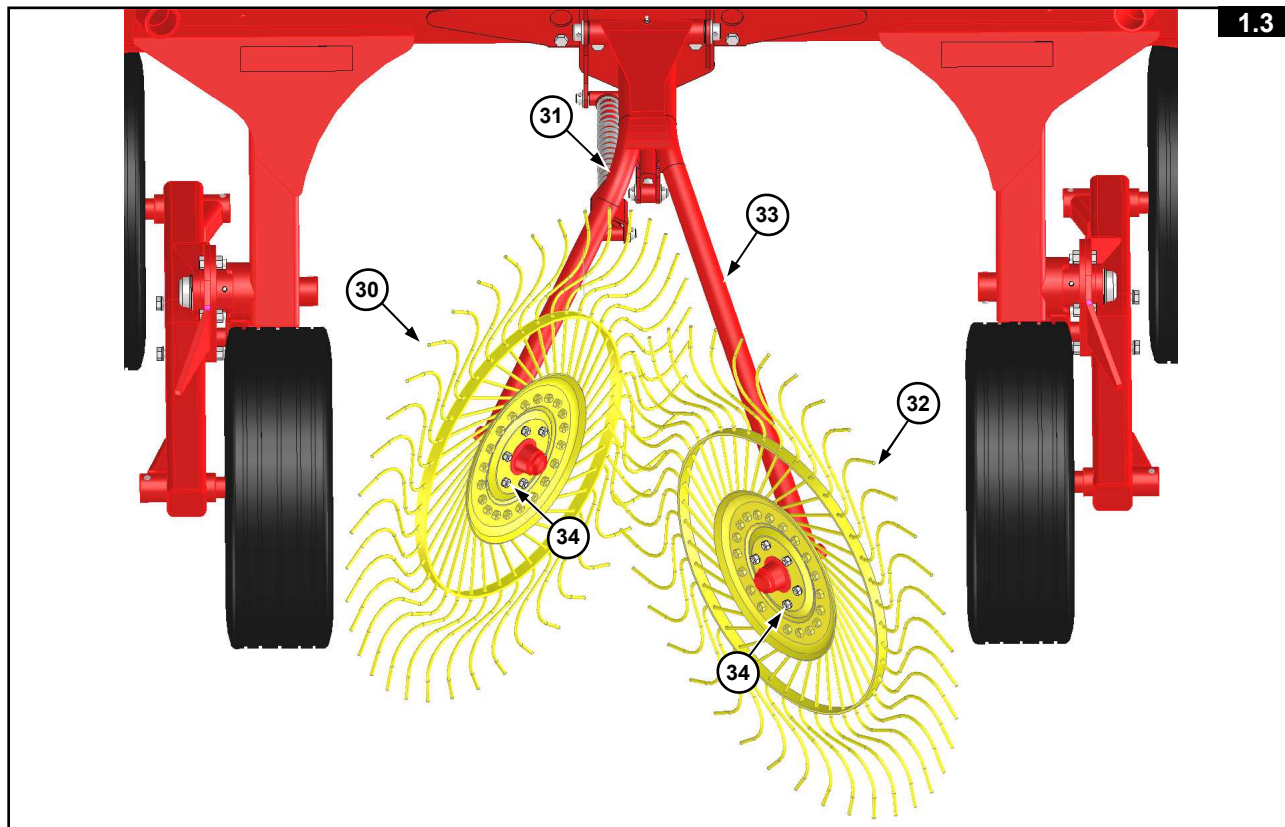
- 1) Attach the spring support (1) into hole (2), using the pin (3), washers (4) and spring pins (5).
- 2) Insert spring (6) between support (1) and support (7), then fasten support (7) with pin (8) washers (4) and spring pins (5) into hole (9) for standard adjusting of spring tension.
- 3) Attach the hydraulic cylinder (20) with the spacers (22) to the frame (25), using the pin (8), washers (4) and spring pins (5). Connect cylinder (20) to arm (24) with pin (21), washers (4) and spring pins (5).

Pos.	Qty.	Description
3	1	PIN $\varnothing 20$ L.130 ( $\varnothing 25/32"$ L.5"7/64)
4	8	FLAT WASHER $\varnothing 21$ ( $\varnothing 13/16"$ ) DIN 125A
5	8	SPRING PIN $\varnothing 6 \times 35$ (15/64"x1"3/8) DIN 1481
8	2	PIN $\varnothing 20$ L.110 ( $\varnothing 25/32"$ L.4"21/64)
21	1	PIN $\varnothing 20$ L.80 ( $\varnothing 25/32"$ L.3"9/64)

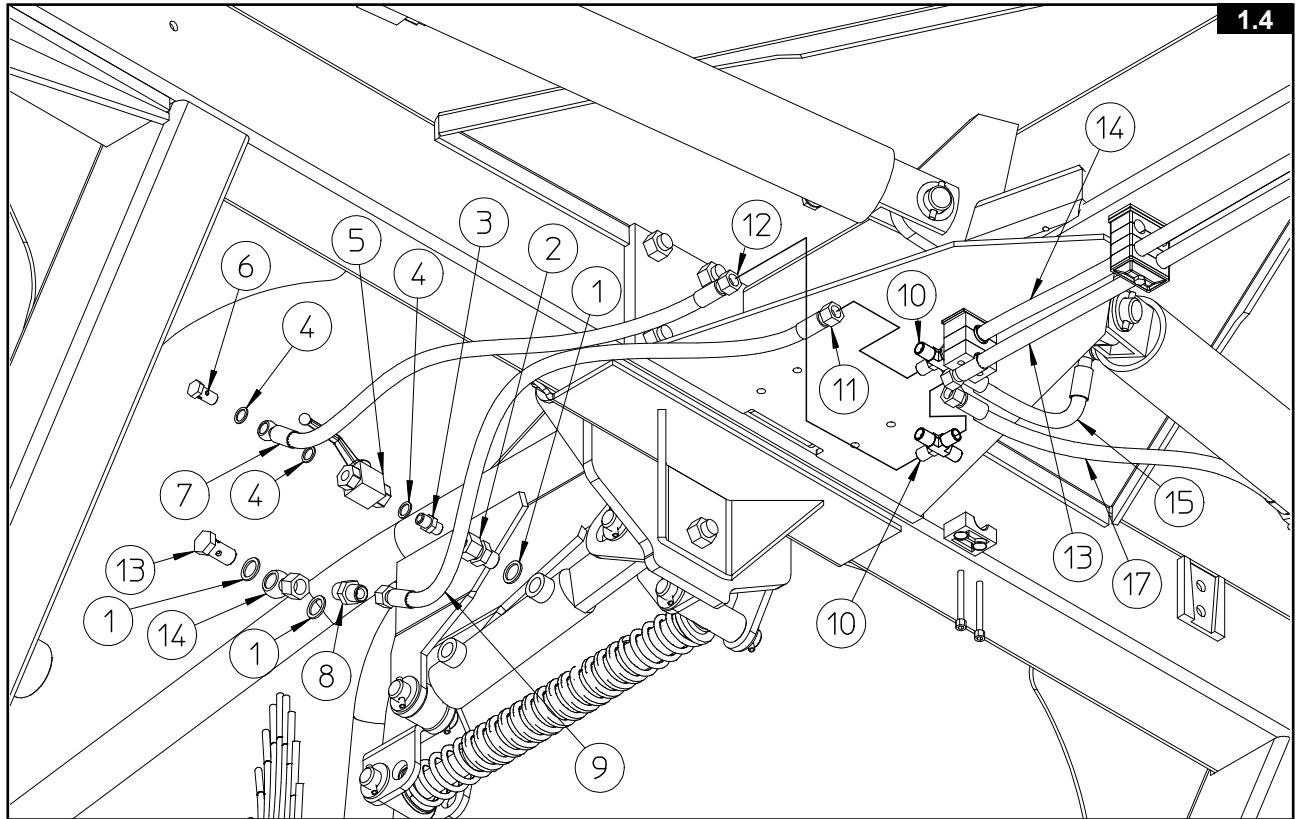


Proceed as follows (Fig.1.3):

- 1) Fasten the rake RH wheel (30) to the LH arm (31) using six bolts (34), with washers and nuts.
- 2) Fasten the rake LH wheel (32) to the RH arm (33) using six bolts (34) M10x25 (25/64"x1") DIN 933, split washer  $\varnothing 10.5$  ( $\varnothing 26/64$ ") DIN 127B and nut M10 (25/64") DIN 934.



### 1.1.1 REAR CENTER WHEELS KIT - HYDRAULIC SYSTEM ASSEMBLY

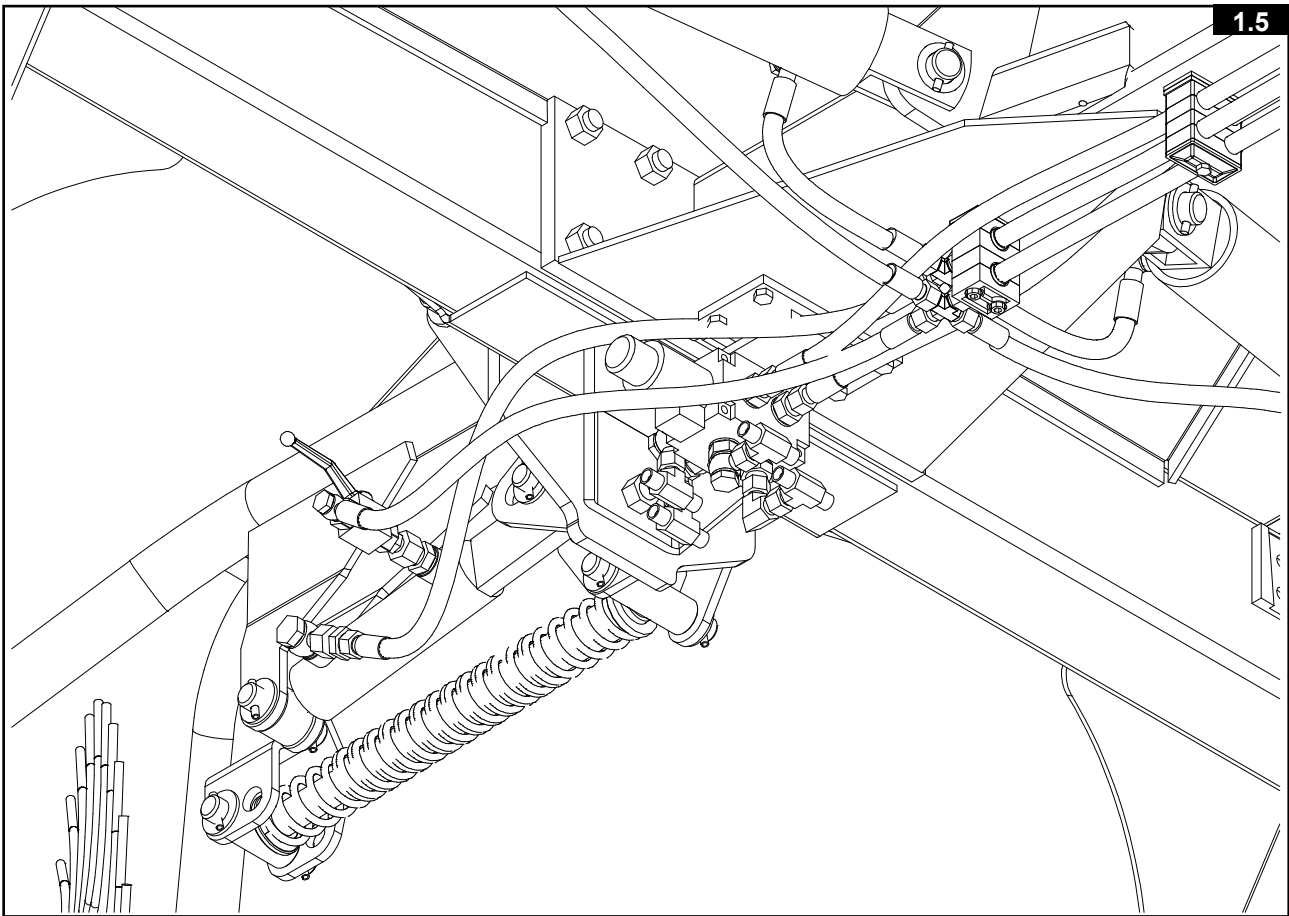


To assemble the center rake wheel kit hydraulic system, refer to Fig. 1.4 and proceed as follows (see also Fig. 1.5 , the result of the completed assembly):

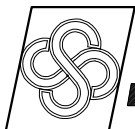
**Attention: before proceeding, make sure that the hydraulic system is not under pressure. Wear personal protective equipment (gloves, goggles, etc.). When loosening the fittings, proceed with care and caution.**

- 1) Remove the T fittings and replace them with cross fittings (10).
- 2) Connect the hose (9) from the 3/8" female fitting side to the boss of the cylinder using fitting (13), banjo (14), two washer (1) and throttling nipple (8). Do not fully tighten at this stage.
- 3) Connect the 1/4" female side (11) of the hose (9) to the T fitting (10). Position correctly the hose (9) so that it does not get deformed or crushed when the cylinder is operating. Once this is done, tighten all the various components that had been left untightened earlier.
- 4) Fasten the fitting (2) to the boss on the cylinder, with the washer (1).
- 5) Connect the valve (5) to the adaptor nipple (3) with the washer (4).
- 6) Screw the valve assembly just formed to the swiveling fitting (2).
- 7) Put the lever of the valve (5) in the open position so that it won't get in the way during the assembly. Screw the fitting (12) of the hose (7) onto the T fitting (10) and the eye fitting to the valve (5) with the washers (4) and the hollow screw (6). Do not fully tighten screw (6) at this stage.
- 8) Now correctly position the hose (7) so that it does not get deformed or crushed when the cylinder is operating, then fully tighten the screw (6).

Pos.	Qty.	Description
1	2	WASHER 3/8" BONDED
2	1	STRAIGHT FITTING M-F SWIVELING 3/8"
3	1	REDUCTION NIPPLE 3/8" - 1/4"
4	3	WASHER 1/4" BONDED
5	1	VALVE 1/4"
6	1	PERFORATED SCREW FITTING 1/4"
7	1	HOSE L. 640mm (28"47/64) FD 1/4"-OC 1/4"
8	1	NIPPLE 3/8"-3/8" THROTTLED
9	1	HOSE L. 730mm (25"3/16) FD 1/4"-FD 3/8"
10	2	CROSS FITTING, 1/4"
13	1	PERFORATED SCREW FITTING 3/8"
14	1	BANJO 3/8"







AGRICULTURAL MACHINERY  
**sitrex**® SpA .

Zona Industriale-Viale Grecia, 8  
06018 TRESTINA-(Perugia)-ITALY  
Tel. +39.075.8540021-Telefax +39.075.8540523  
e-mail: [sitrex@sitrex.it](mailto:sitrex@sitrex.it) [www.sitrex.com](http://www.sitrex.com)

