

# GASPARDO

# MOD. FBR



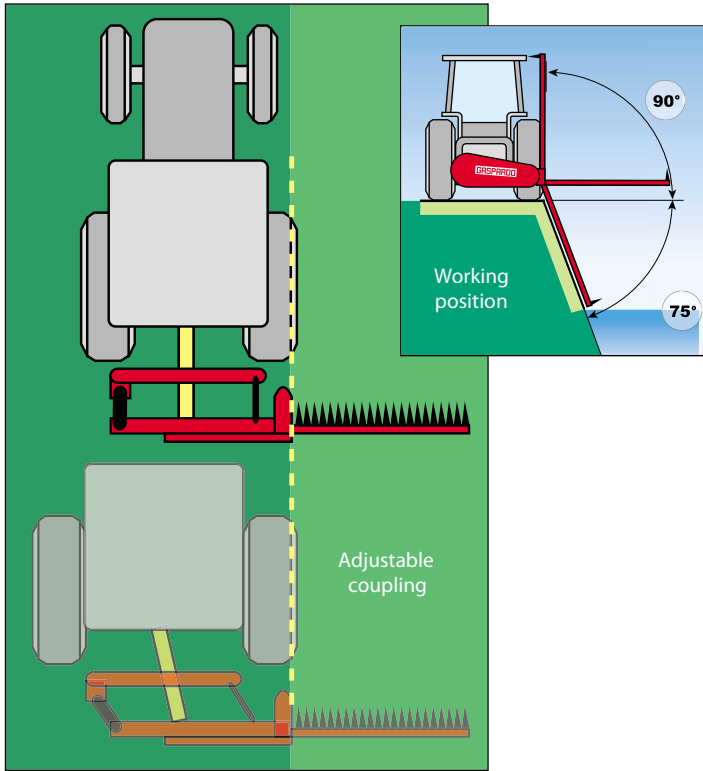
Mower with double connecting-rod and adjustable coupling for tractors with minimum 25 HP and 540 rpm P.T.O. shaft. Gaspardo sickle mowers use a double action tooth-blade combination to increase cutting speed. Increased blade speed allows for a cleaner, more efficient cut on any type of grass. The unique tooth-blade motion guarantees even damp or layed over material be cut cleanly. Machine configuration minimizes cutter bar contact with soil.

#### **Standard Equipments**

- Universal three point hitch
- Grass swath guide
- Bar safety protection
- Cardan shaft

#### **Optional Equipments**

- Hydraulic cutting bar lifting



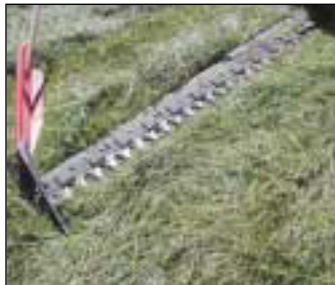
Mechanical lifting



Hydraulic lifting



Removable tooth



FBR
-----

--

--

--

--

--

kW	HP	
FBR 130 *	18	25
FBR 145 *	18	25
FBR 175 *	18	25
FBR 205 *	18	25

inch	r.p.m.	Tractor Speed miles/h	lbs
51	540	6-8	444
57	540	6-8	451
69	540	6-8	492
81	540	6-8	506

\* Mechanical or hydraulic lifting

# GASPARDO



MASCHIO-GASPARDO USA Inc.  
120 North Scott Park Road  
Eldridge, IA 52748  
Ph. (563) 285 9937  
Fax (563) 285 9938



MASCHIO-GASPARDO CANADA Inc.  
2275, rue Power  
Drummondville, QC J2C 6Z6  
Ph. (819) 477 1107  
Fax (819) 477 1108

COMPANY  
WITH QUALITY SYSTEM  
CERTIFIED BY DNV  
**ISO 9001/2000**

DEALER: