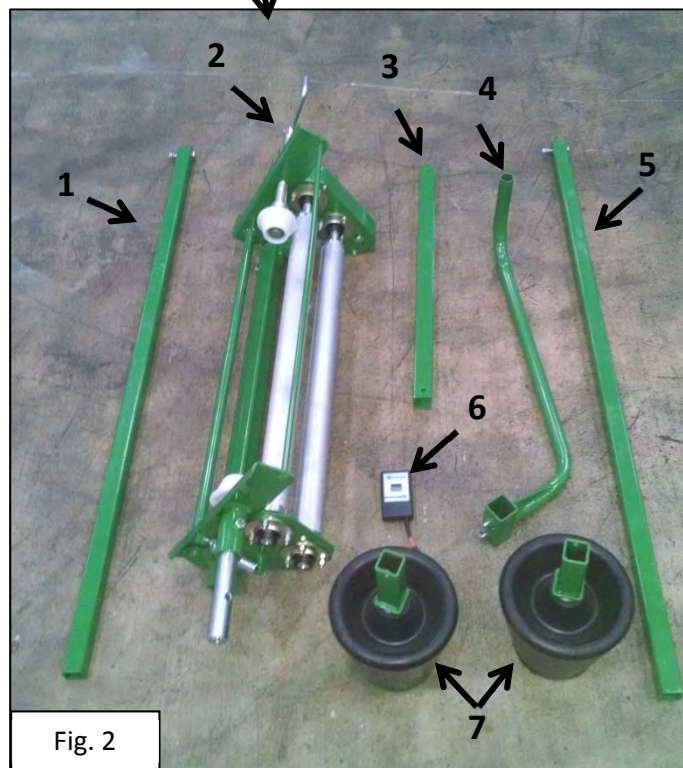


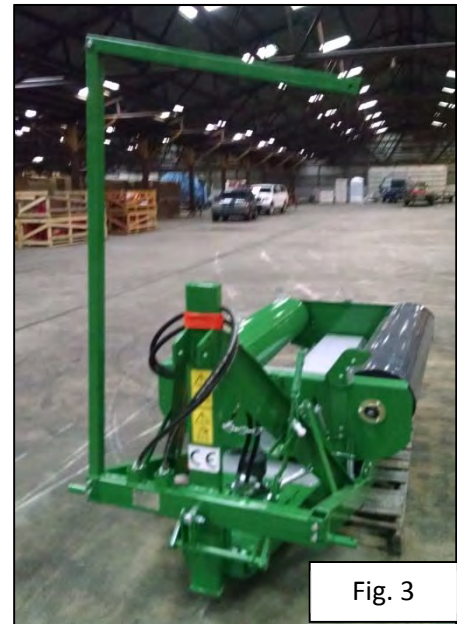
The following pages explain the light assembly of an EW-450A. Complete assembly should take between 8-15 minutes.

Fig. 1 shows how unit should appear upon delivery. Fig. 2 shows the contents packaged from warehouse.



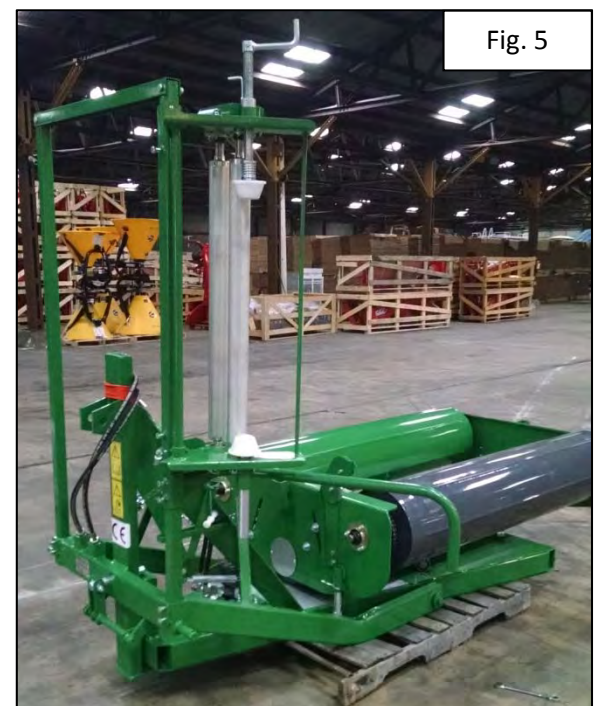
STEP 1 (Fig. 3):

- Place Piece (1) onto frame of wrapper and tighten bolts.
- Attach Piece (3) to Piece (1)



STEP 2 (Fig. 4, 5, & 6):

- Put Piece (5) through Piece (2) as seen in Fig. 4
- Put Piece (5) through Piece (4) as seen in Fig. 4
- Place Pieces (from Fig. 4) into frame of wrapper as seen in Fig. 5.
- Adjust Bracket for Film Dispenser as seen in Fig. 6.



STEP 3 (Fig. 4, 5, & 6):

- Put Piece (7) into frame of wrapper as seen in Fig. 7
- Attach Piece (6) to cable as seen in Fig. 8



Final Assembly should look like unit in Fig. 9. Please refer to the “First Time Users Guide” to start using the machine. Always read the Operator’s Manual before attempting to use a new product.

