



AGRICULTURAL MACHINERY
sitrex®

SPARE PARTS LIST

HD / 14 - HD / 16

TABLE NO. 920.170 REAR PART

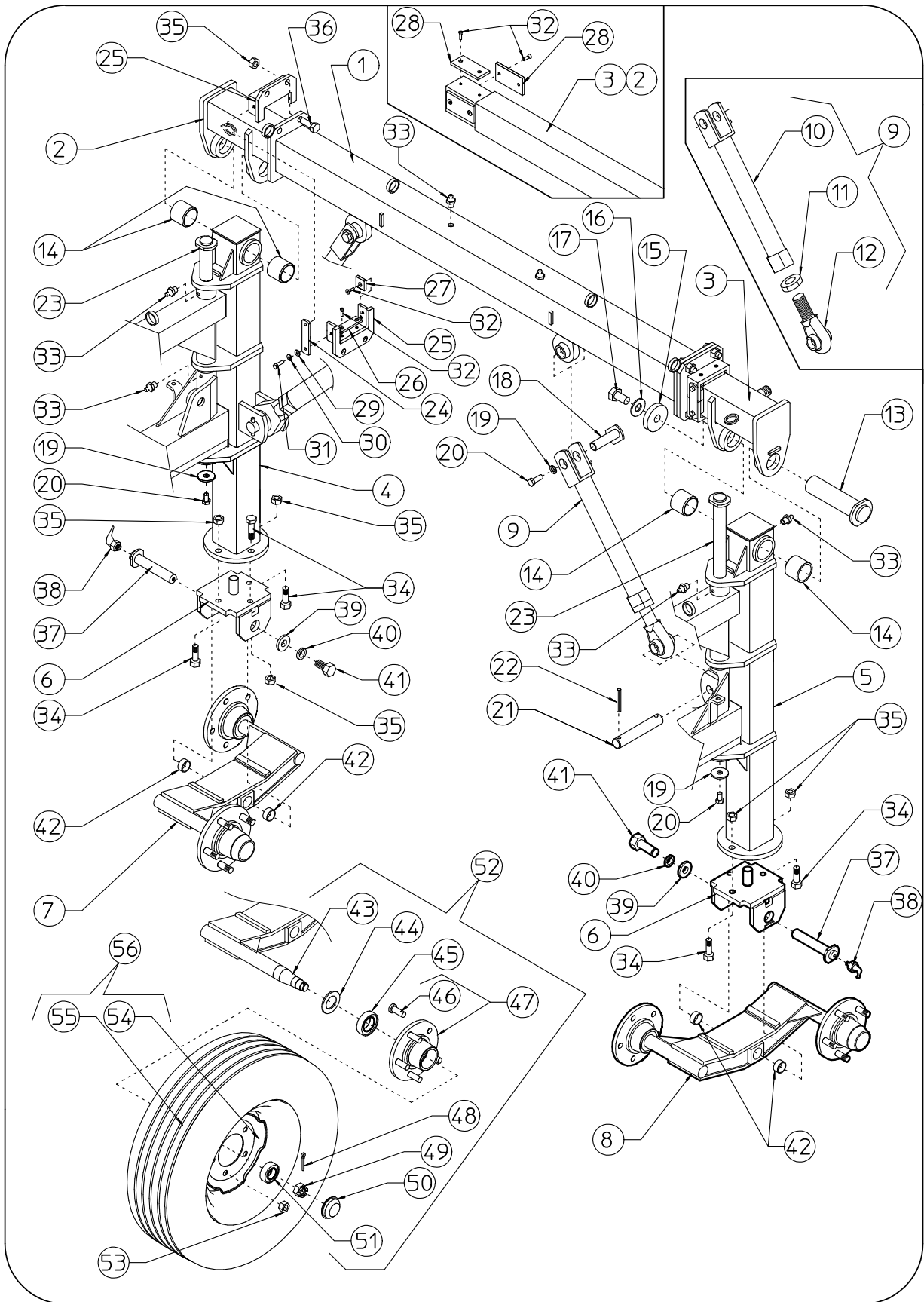


TABLE NO 920.170 REAR PART					
ITEM	Q.ty HD14	Q.ty HD16	PART NO	DESCRIPTION	NOTE
1	1	1	220.478	OUTER CROSSPIECE	
2	1	1	220.479	RH INNER CROSSPIECE	
3	1	1	220.480	LH INNER CROSSPIECE	
4	1	1	220.185	REAR WHEEL SUPPORT,RH	
5	1	1	220.186	REAR WHEEL SUPPORT,LH	
6	2	2	220.520	SUPPORT	
7	1	1	220.521	TANDEM SUPPORT, RH	
8	1	1	220.522	TANDEM SUPPORT, LH	
9	2	2	220.484	TIE ROD, COMPLETE	
10	2	2	220.486	TIE ROD PIPE	
11	2	2	610.813	NUT M30 DIN 936	
12	2	2	220.223	TIE ROD HEAD	
13	2	2	210.100	PIN	
14	4	4	200.199	BUSH	
15	2	2	200.822	WASHER	
16	2	2	600.214	SPRING WASHER D 23 DIN 127B	
17	2	2	600.150	SCREW M22x50 DIN 933 8.8	
18	2	2	220.209	PIN	
19	4	4	500.160	WASHER	
20	4	4	600.770	SCREW M12x20 DIN 933 8.8	
21	2	2	220.191	PIN	
22	4	4	600.027	SPRING PIN D 8 X 50 DIN 1481	
23	2	2	210.247	PIN	
24	4	4	220.043	LINKING PLATE	
25	4	4	220.042	SLIDING SUPPORT	
26	4	4	210.911	SLIDING	
27	8	8	210.912	SLIDING	
28	8	8	210.858	SLIDING	
29	8	8	600.322	WASHER ø10,5	
30	8	8	600.024	SPRING WASHER D 10.5	
31	8	8	600.006	SCREW M10 X 25 DIN 933 8.8	
32	32	32	610.663	SCREW M8x16 DIN 5933	
33	8	8	600.034	GREASE NIPPLE M8	
34	6	6	600.384	SCREW M16x50 DIN 933 8.8	
35	14	14	600.080	NUT M16 DIN 980	
36	8	8	610.167	SCREW M16x45 DIN 933 8.8	
37	2	2	220.330	PIN	
38	2	2	610.808	GREASE NIPPLE M8x90°	
39	2	2	220.469	WASHER	
40	2	2	600.259	GROWER ø21	
41	2	2	610.931	SCREW M20x1,5x20 DIN 961 8.8	
42	4	4	610.806	BUSH	
43	4	4	225.154	PIN	
44	4	4	600.284	DUST COVER	
45	4	4	600.285	BEARING 30208	
46	20	20	610.413	SPECIAL SCREW M16x1,5x50	
47	4	4	600.286	HUB WITH SCREW	
48	4	4	600.291	SPLIT PIN	
49	4	4	600.288	CASTLE NUT M27x1,5	
50	4	4	600.290	CAP	
51	4	4	600.287	BEARING 30206	
52	4	4	225.155	HUB ASSY	
53	20	20	600.289	NUT M16x1,5	
54	4	4	600.304	RIM	
55	4	4	600.303	TIRE	
56	4	4	600.281	WHEEL ASSY	

TABLE NO. 920.171 DRAWBAR					
ITEM	Q.ty HD14	Q.ty HD16	PART NO	DESCRIPTION	NOTE
1	1	1	220.265	COUNTER PLATE	
2	1	1	220.266	REAR DRAWBAR	
3	1	1	220.267	DRAWBAR	
4	1	1	220.268	DRAWBAR	
5	1	1	210.243	FRONT DRAWBAR	
6	1	1	220.471	TRACTOR HITCH	
7	1	1	220.487	FRONT TIE ROD	
8	1	1	220.488	REAR TIE ROD	
9	1	1	220.166	PARKING STAND	
10	1	1	200.222	PIN	
11	1	1	600.019	SPLIT PIN	
12	2	2	200.828	PIN	
13	4	4	500.160	WASHER	
14	6	6	600.770	SCREW M12x20 DIN 933 8.8	
15	2	2	200.818	BUSH	
16	1	1	600.618	SCREW M12x60 DIN 931 8.8	
17	1	1	600.077	NUT M12 DIN 980	
18	1	1	610.790	PLUG	
19	24	24	610.167	SCREW M16x45 DIN 933 8.8	
20	36	36	600.080	NUT M16 DIN 980	
21	12	12	610.839	SCREW M16x165	
22	1	1	220.277	PIN	
23	1	1	220.208	WASHER	
24	1	1	610.593	LOCK-NUT M30x1,5	
25	2	2	610.932	NUT M33 DIN 934	
26	2	2	610.933	NUT M33 DIN 936	
27	2	2	210.134	PIN	
28	4	4	600.034	GREASE NIPPLE M8	
29	2	2	210.135	PIN	
30	2	2	220.534	CYLINDER WITH ACCESSORIES	

TABLE NO. 920.172 INITIAL SECTIONS

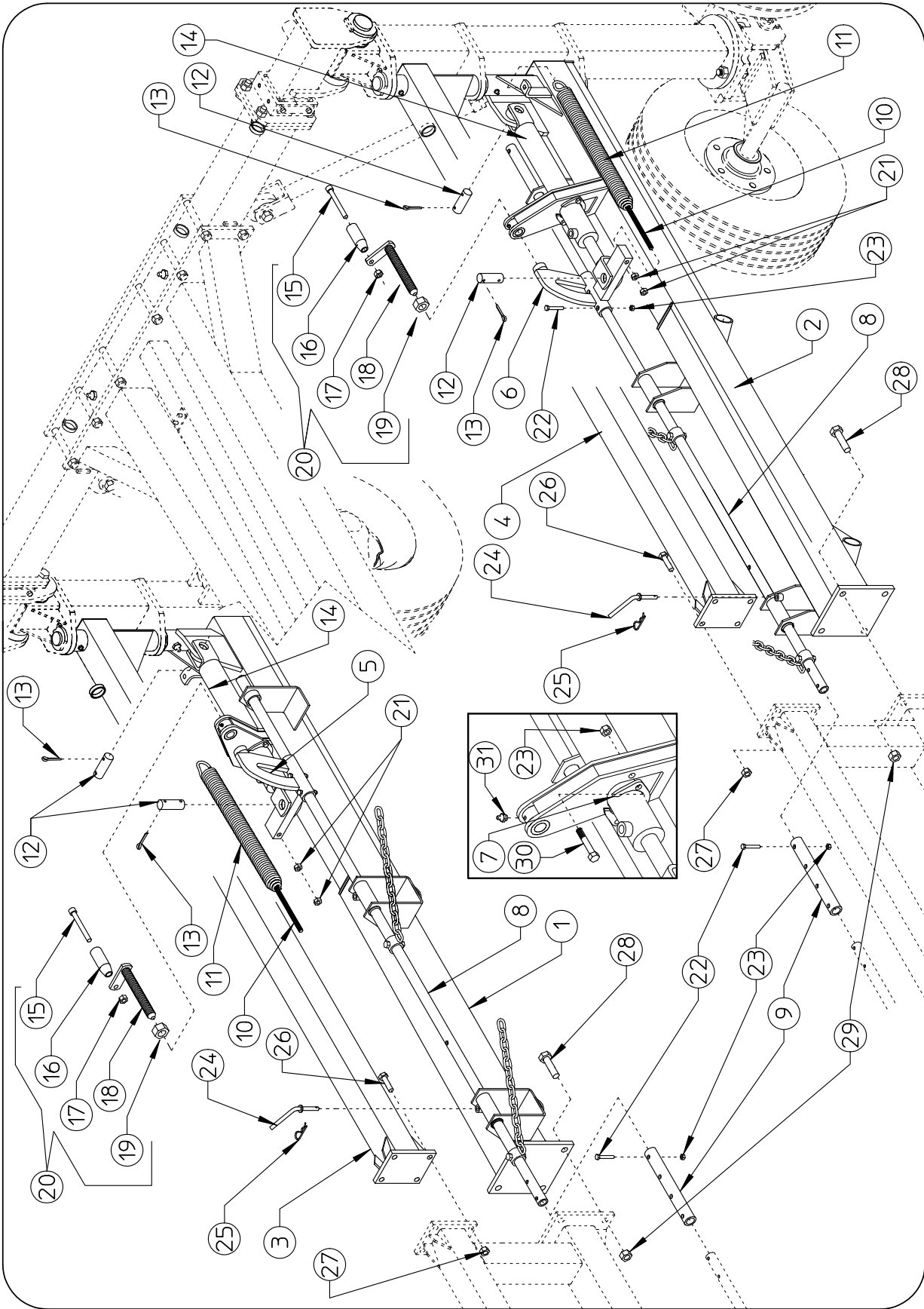


TABLE NO. 920.172 INITIAL SECTIONS					
ITEM	Q.ty HD14	Q.ty HD16	PART NO	DESCRIPTION	NOTE
1	1	1	220.512	INITIAL SECTION, RH	
2	1	1	220.513	INITIAL SECTION, LH	
3	1	1	210.736	R.H. REINFORCEMENT	
4	1	1	210.737	L.H. REINFORCEMENT	
5	1	1	220.358	RH SUPPORT	
6	1	1	220.359	LH SUPPORT	
7	2	2	220.526	SUPPORT	
8	2	2	220.535	PIPE	
9	2	2	220.357	BUSH	
10	2	2	210.173	TIE ROD	
11	2	2	210.152	SPRING	
12	4	4	200.032	PIN	
13	8	8	600.038	SPLIT PIN \varnothing 6x35 DIN 94	
14	2	2	210.816	CYLINDER	
15	2	2	600.967	SCREW M 12x100 DIN 912 8.8	
16	2	2	600.965	KNOB	
17	2	2	600.008	NUT M12 DIN 934	
18	2	2	210.177	HANDLE	
19	2	2	600.200	NUT M22 DIN 934	
20	2	2	210.178	HANDLE, COMPLETE	
21	4	4	600.010	NUT M10 DIN 934	
22	12	12	610.525	SCREW M8x60 DIN 931 8.8	
23	16	16	600.076	NUTS M8 DIN 980	
24	2	2	220.377	PIN	
25	2	2	600.019	SPLIT PIN	
26	8	8	600.752	SCREW M14 X 45 DIN 931 8.8	
27	8	8	600.075	NUT M14 DIN 980	
28	8	8	610.167	SCREW M16 X 45 DIN 933 8.8	
29	8	8	600.080	NUT M16 DIN 980	
30	4	4	600.735	SCREW M8 X 65 DIN 931 8.8	
31	2	2	600.124	GREASE NIPPLE M6	

TABLE NO. 920.173 CENTER SECTIONS

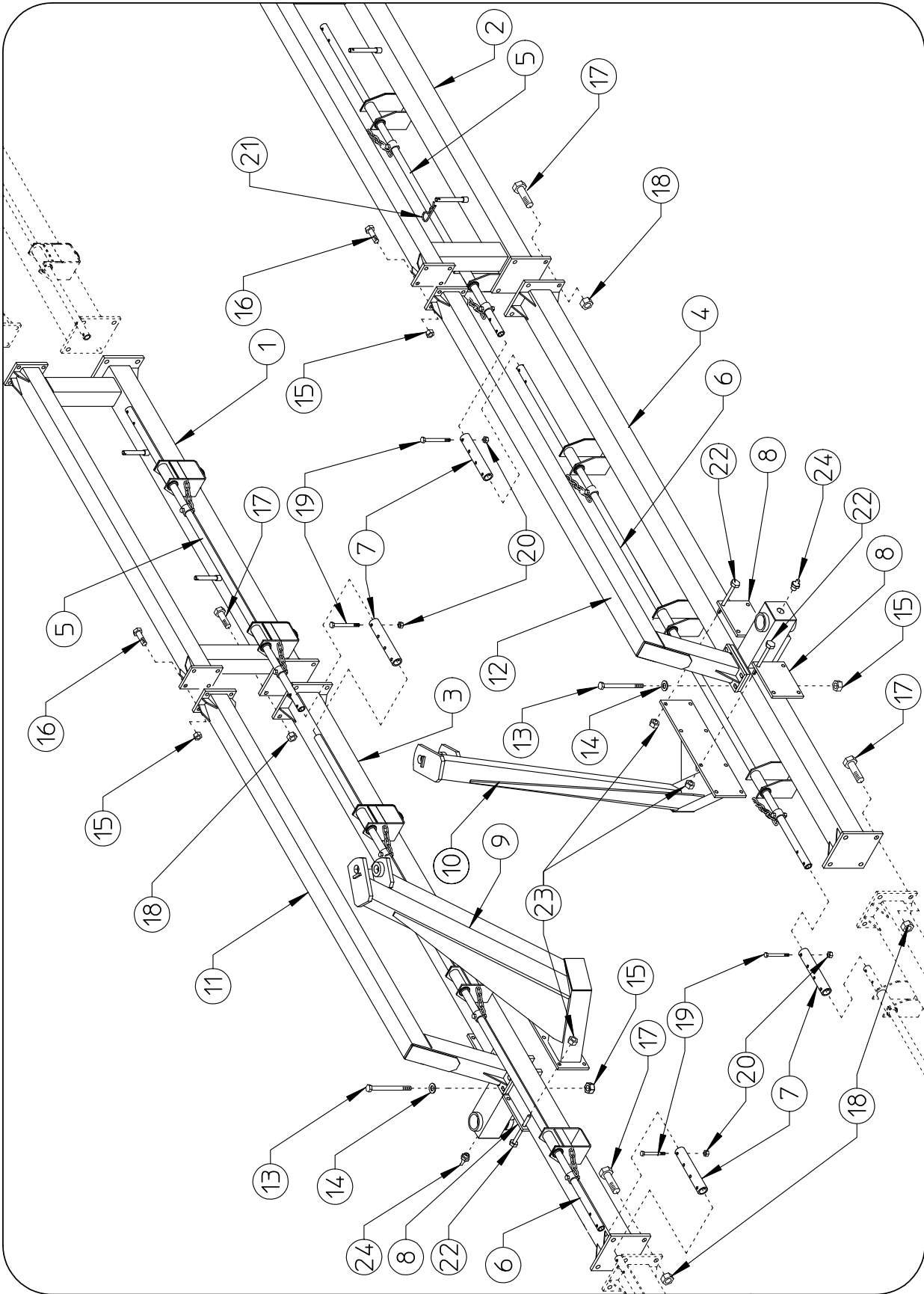


TABLE NO. 920.173 CENTER SECTIONS					
ITEM	Q.ty HD14	Q.ty HD16	PART NO	DESCRIPTION	NOTE
1	1	1	220.514	SECTION 2 RH WHEEL	
2	1	1	220.515	SECTION 2 LH WHEEL	
3	1	1	220.516	SECTION 3 RH WHEEL	
4	1	1	220.517	SECTION 3 LH WHEEL	
5	2	2	220.536	PIPE	
6	2	2	220.537	PIPE	
7	2	4	220.357	BUSH	
8	4	4	200.774	COUNTER PLATE	
9	1	1	210.840	RH ARM	
10	1	1	210.841	LH ARM	
11	1	1	210.738	RH REINFORCEMENT	
12	1	1	210.739	LH REINFORCEMENT	
13	8	8	610.908	SCREW M14x160 DIN 931 8.8	
14	8	8	600.188	WASHER ø15 DIN 125A	
15	16	16	600.075	NUT M14 DIN 980	
16	8	8	600.752	SCREW M 14x45 DIN 931	
17	8	16	610.167	SCREW M 16x45 DIN 933	
18	8	16	600.080	NUT M16 DIN 980	
19	8	16	610.525	SCREW M8x60 DIN 931	
20	8	16	600.076	NUT M8 DIN 980	
21	4	4	600.019	SPLIT PIN	
22	16	16	600.001	SCREW M12x140 DIN 931	
23	16	16	600.077	NUT M12 DIN 980	
24	2	2	600.034	GREASE NIPPLE M8	

TABLE NO. 920.174 FRONT PART

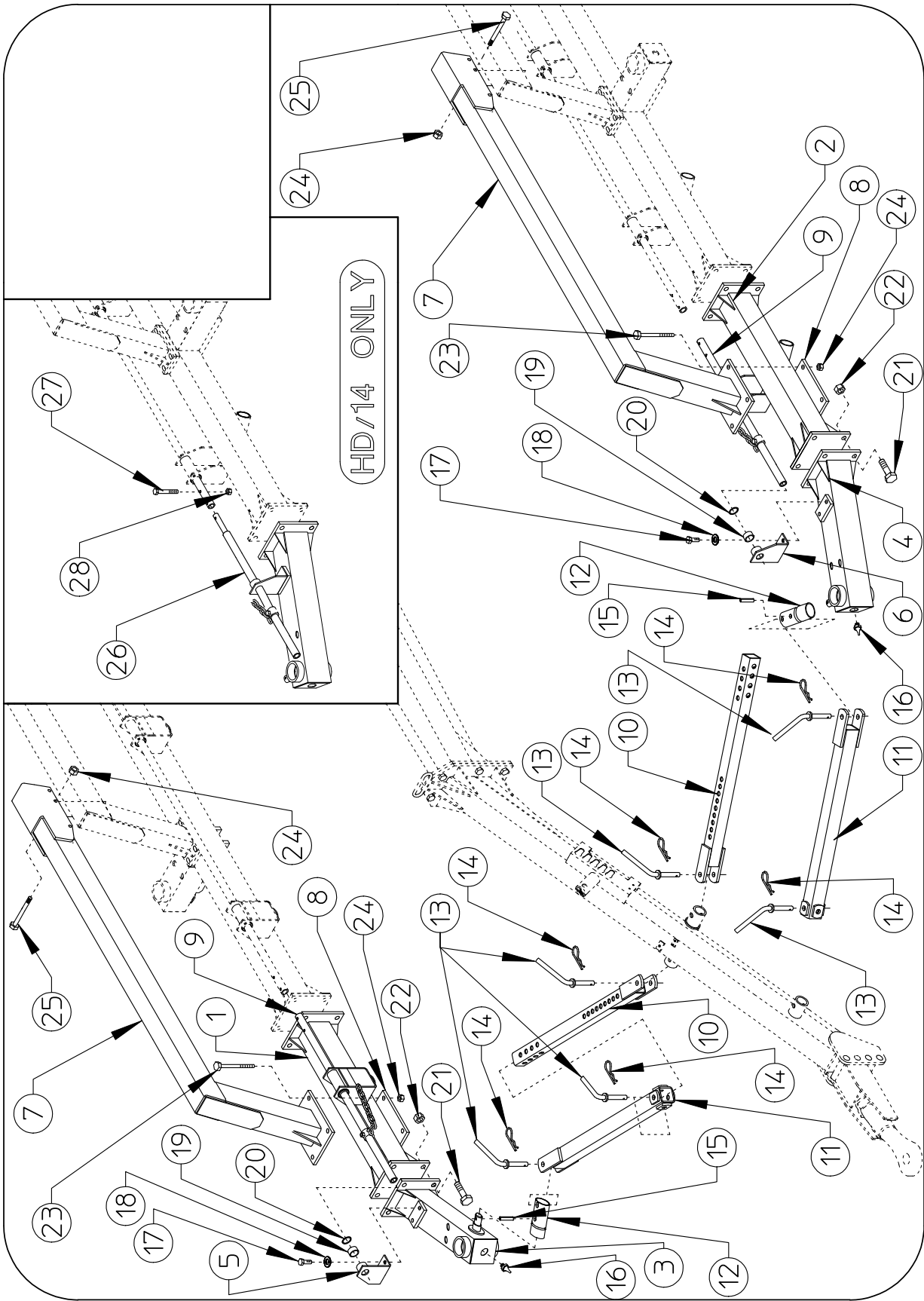


TABLE NO. 920.174 FRONT PART					
ITEM	Q.ty HD14	Q.ty HD16	PART NO	DESCRIPTION	NOTE
1	*	1	220.518	SECTION 1 RH WHEEL	
2	*	1	220.519	SECTION 1 LH WHEEL	
3	1	1	210.837	RH, SUPPORT	
4	1	1	210.838	LH, SUPPORT	
5	1	1	220.360	RH, SUPPORT	
6	1	1	220.361	LH, SUPPORT	
7	*	2	220.406	REINFORCEMENT	
8	*	2	220.691	COUNTER PLATE	
9	*	2	220.538	PIPE	
10	2	2	200.817	INNER ARM	
11	2	2	200.816	OUTER ARM	
12	2	2	220.204	BUSH	
13	6	6	200.820	PIN	
14	6	6	600.019	SPLIT PIN	
15	2	2	610.809	SPRING PIN \varnothing 10x32 DIN 1481	
16	2	2	600.034	GREASE NIPPLE M8	
17	4	4	610.843	SCREW M10 X 16 DIN 933 8.8	
18	4	4	600.322	WASHER \varnothing 10,5 DIN 125A	
19	2	2	220.342	NYLON BUSH	
20	2	2	610.898	ELASTIC RING SB 44	
21	8	8	610.167	SCREW M16 X 45 DIN 933 8.8	
22	8	8	600.080	NUT M16 DIN 980	
23	*	8	600.001	SCREW M12x140 DIN 931	
24	*	14	600.077	NUT M12 DIN 980	
25	*	6	600.225	SCREW M12x120 DIN 931	
26	2	*	220.539	PIPE	
27	2	*	600.551	SCREW M8x45 DIN 931	
28	2	*	600.076	NUT M8 DIN 980	

TABLE NO. 920.175 PNEUMATIC WHEEL ASSY

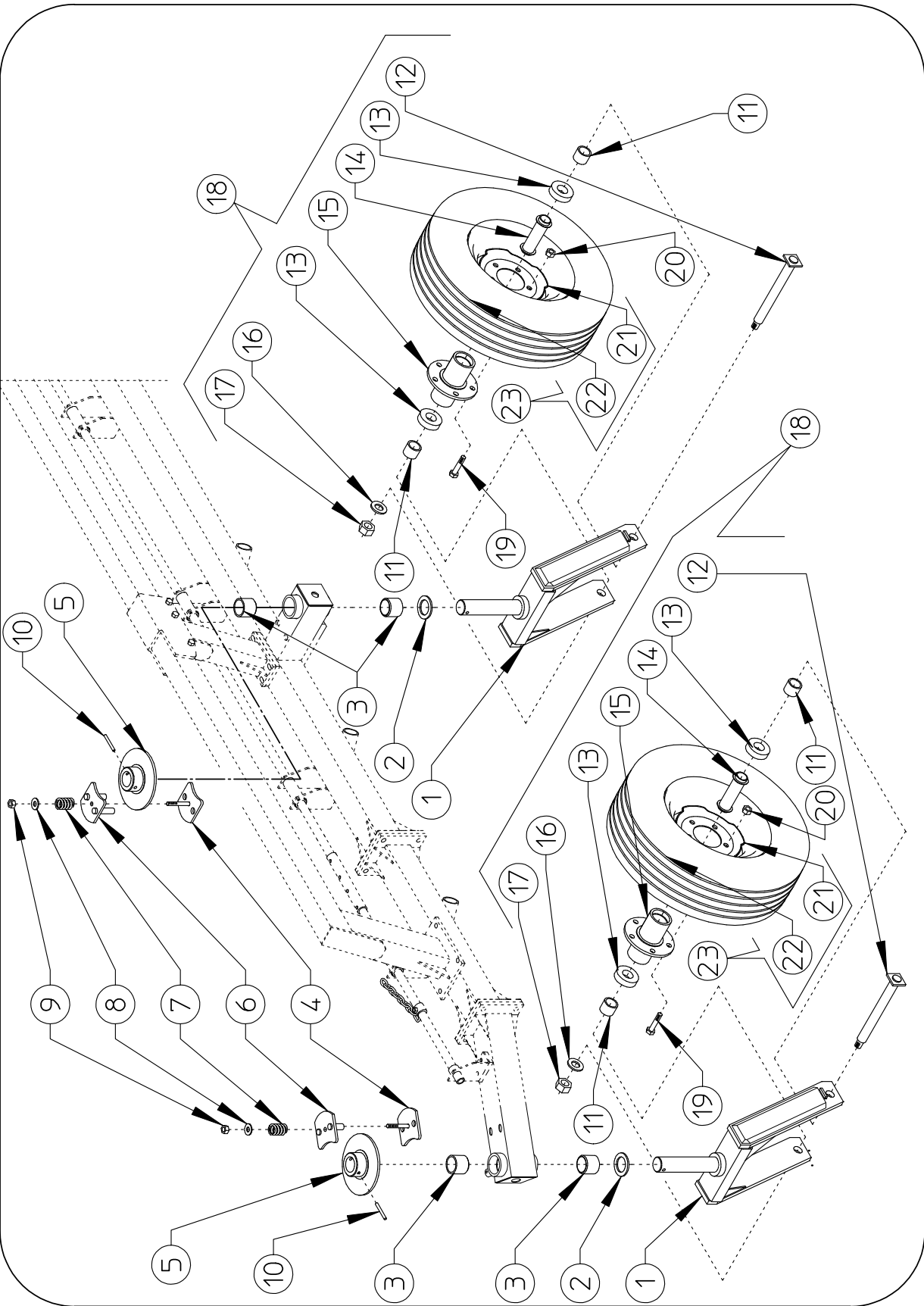


TABLE NO. 920.175 PNEUMATIC WHEELS ASSY					
ITEM	Q.ty HD14	Q.ty HD16	PART NO	DESCRIPTION	NOTE
1	4	4	220.523	SUPPORT	
2	4	4	210.179	WASHER	
3	8	8	200.199	BUSH	
4	4	4	210.931	BRAKE COUNTER PLATE	
5	4	4	200.025	BUSH	
6	4	4	200.810	BRAKE	
7	4	4	200.044	SPRING	
8	4	4	600.092	WASHER	
9	4	4	600.077	NUT M12 DIN 980	
10	4	4	600.033	SPRING PIN ø10x80 DIN 1481	
11	8	8	210.170	SPACER	
12	4	4	210.184	PIN	
13	8	8	600.609	BEARING 6206 2RS	
14	4	4	200.140	SPACER	
15	4	4	200.139	HUB	
16	4	4	200.165	WASHER	
17	4	4	600.079	NUT M22 DIN 980	
18	4	4	210.169	HUB ASSY	
19	20	20	600.144	SCREW M16x1,5x70 DIN 961 8.8	
20	20	20	600.289	NUT M16x1,5	
21	4	4	600.304	RIM	
22	4	4	600.303	TIRE	
23	4	4	600.281	WHEEL ASSY	

TABLE NO. 920.176 WHEEL AND ARM ASSY

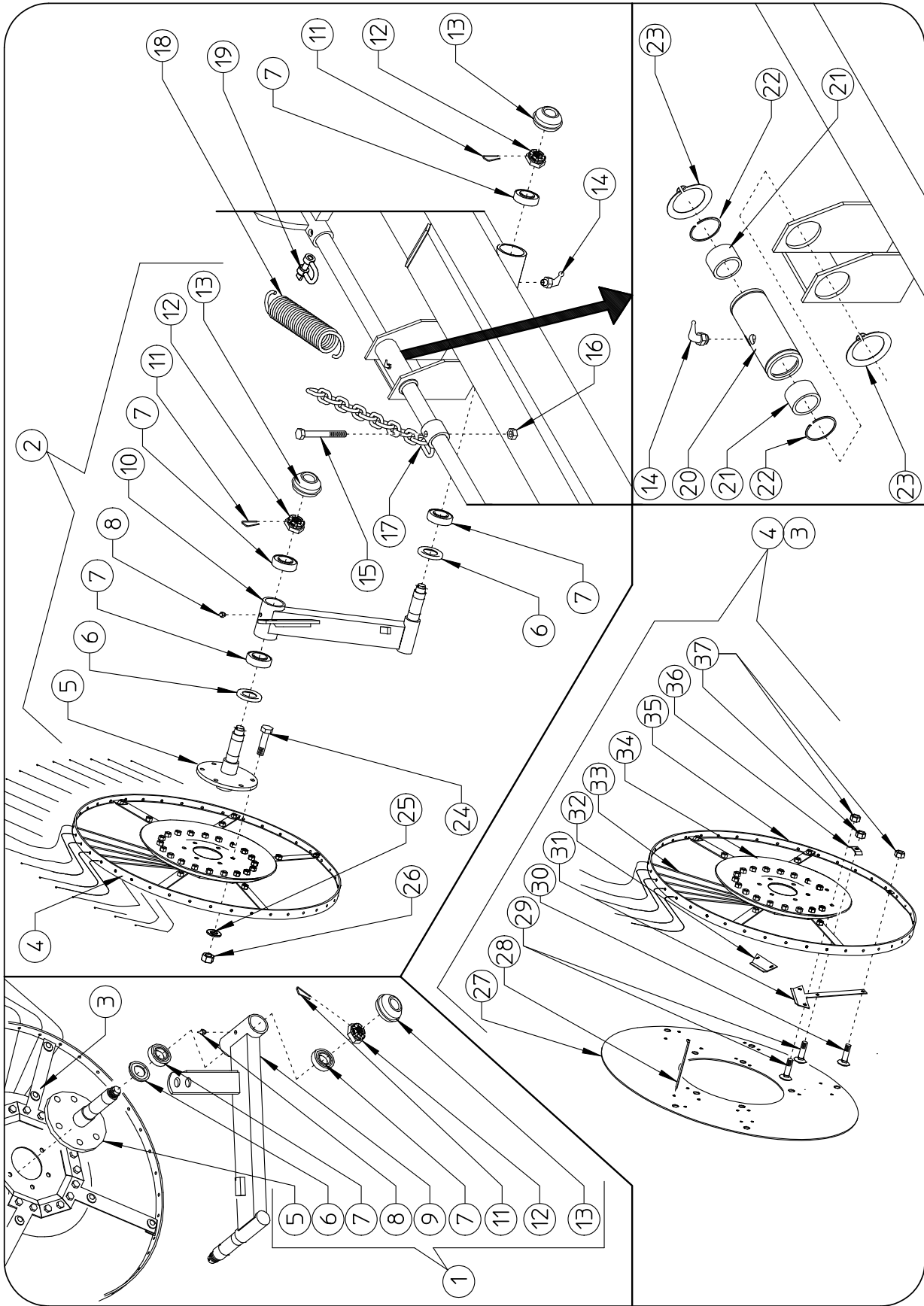


TABLE NO. 920.176 WHEELS AND ARMS ASSY					
ITEM	Q.ty HD14	Q.ty HD16	PART NO	DESCRIPTION	NOTE
1	7	8	220.261	RH ARM, ASSY	
2	7	8	220.262	LH ARM, ASSY	
3	7	8	220.269	RH FINGER WHEEL, ASSY	
4	7	8	220.270	LH FINGER WHEEL, ASSY	
5	14	16	220.278	FLANGE	
6	28	32	610.960	DUST COVER	
7	56	64	610.935	BEARING 32007X	
8	14	16	600.124	GREASE NIPPLE M6	
9	7	8	220.541	RH, ARM	
10	7	8	220.542	LH, ARM	
11	28	32	600.291	SPLIT PIN	
12	28	32	600.288	CASTLE NUT M27x1,5	
13	28	32	600.290	CAP	
14	28	32	600.968	GREASE NIPPLE M6x45°	
15	14	16	610.525	SCREW M8x60 DIN 931 8.8	
16	14	16	600.076	NUT M8 DIN 980	
17	14	16	220.540	CHAIN BUSH	
18	14	16	220.276	SPRING	
19	14	16	610.317	"D" SHACKLES	
20	14	16	220.343	BUSH	
21	28	32	220.342	NYLON BUSH	
22	28	32	610.898	ELASTIC RING SB 44	
23	28	32	610.833	SEEGER E 50 DIN 471	
24	84	96	600.148	SCREW M10 X 30 DIN 933 8.8	
25	84	96	600.024	SPRING WASHER ø10,5	
26	84	96	600.010	NUT M10 DIN 934	
27	14	16	220.273	NYLON FLANGE	
28	140	160	620.039	NYLON CLAMP	
29	350	400	610.823	SCREW M10x30 DIN 603	
30	70	80	600.005	SCREW M10x25 DIN 603	
31	70	80	220.274	TINE LOCK	
32	70	80	220.275	TINE LOCK	
33	560	640	210.864	TINE	
34	14	16	220.272	FLANGE	
35	14	16	220.271	RIM	
36	70	80	220.485	LOCK	
37	420	480	600.029	NUT M10 DIN 980	

TABLE NO. 920.177 HYDRAULIC KIT

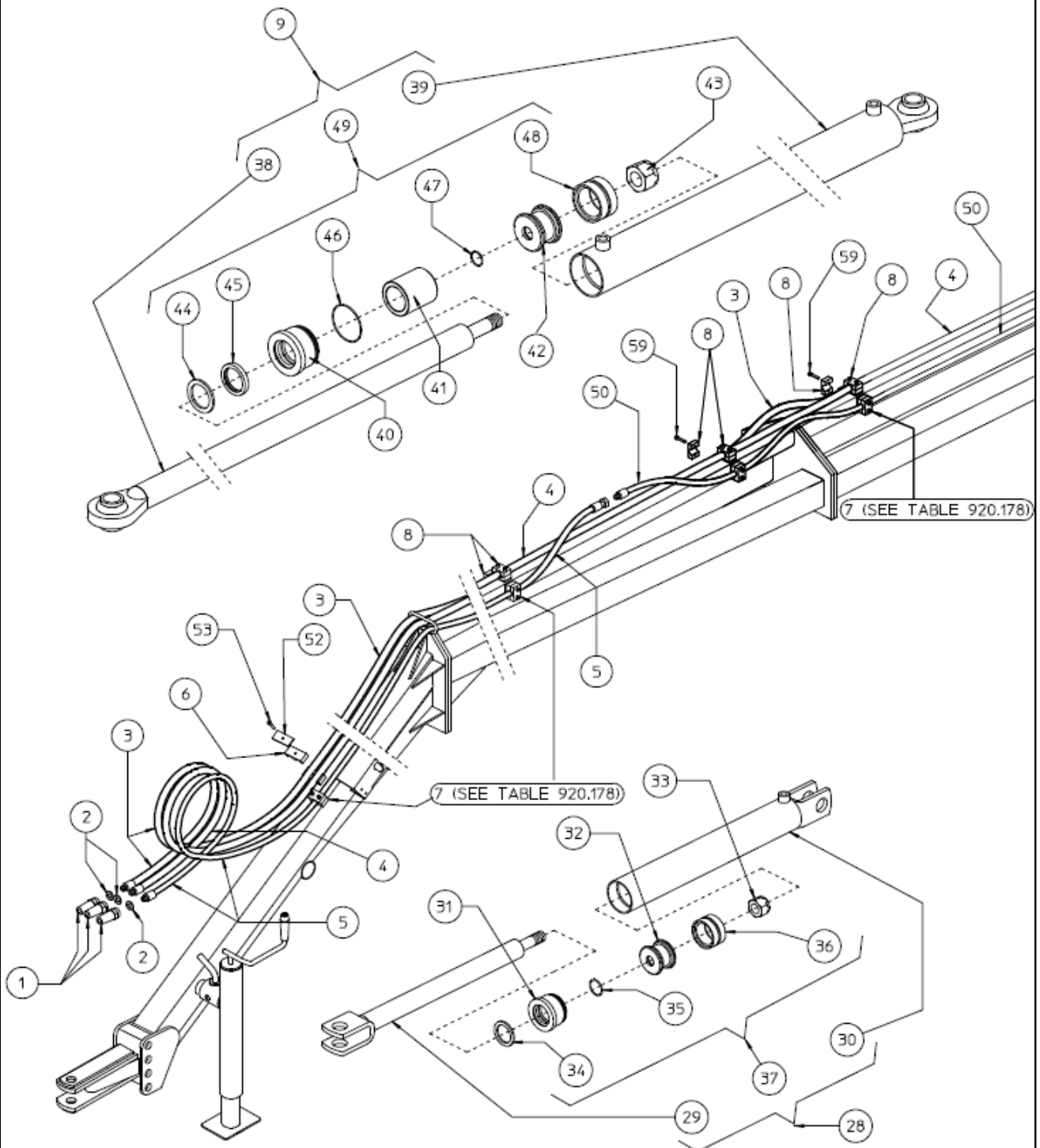


TABLE NO. 920.177 HYDRAULIC KIT

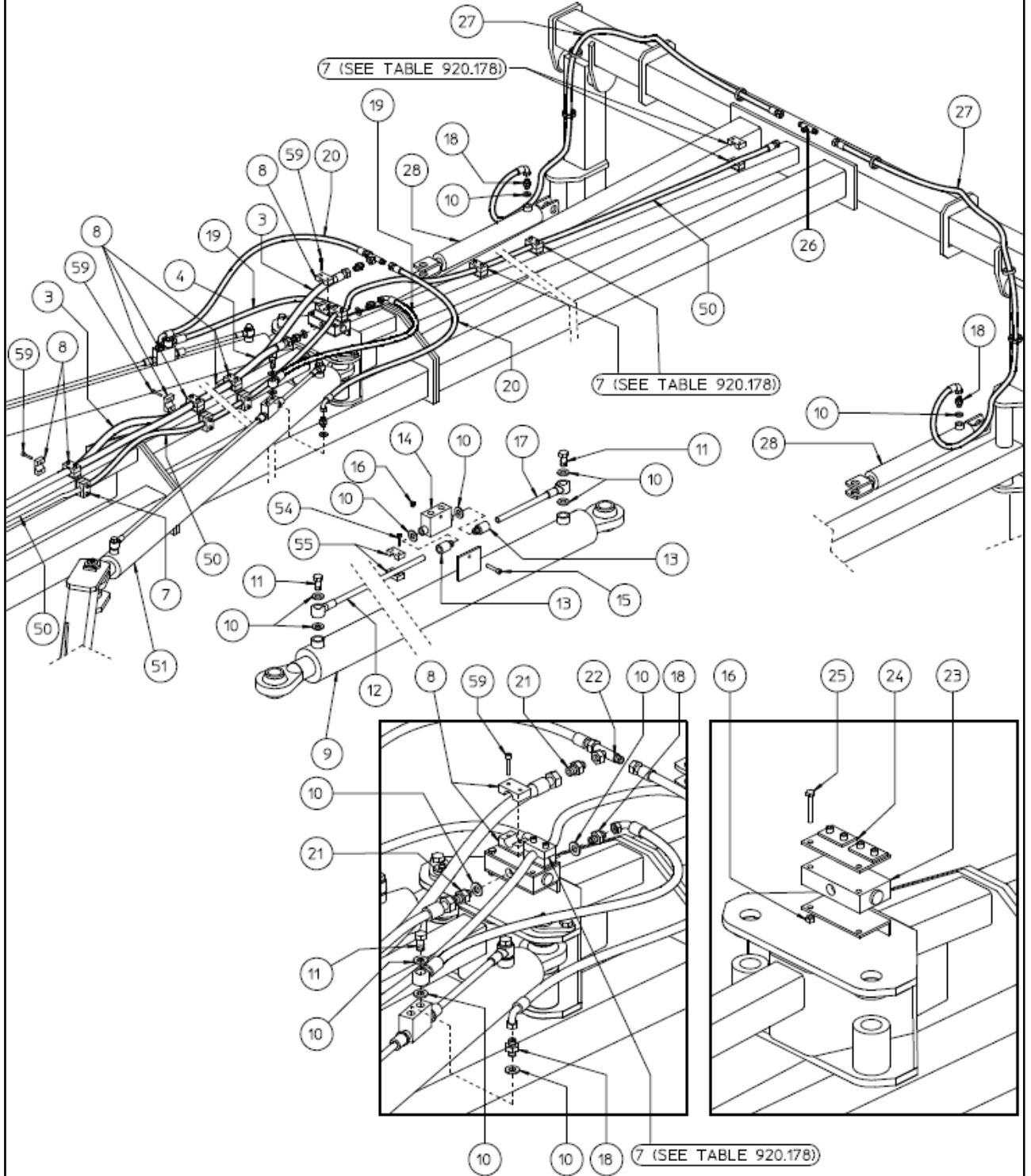


TABLE NO 920.177 HYDRAULIC KIT

ITEM	Q.ty HD14	Q.ty HD16	PART NO	DESCRIPTION	NOTE
1	3	3	600.273	RAPID COUPLING 1/2"	
2	3	3	600.269	COPPER WASHER 1/2"	
3	1	1	610.837	HOSE SAE100 R2AT 1/2 FP 1/2" - MP 1/2"	
4	1	1	610.836	HOSE SAE100 R2AT 1/2 FP 1/2" - MP 1/2"	
5	1	1	610.728	HOSE SAE100 R2AT 3/8 MP 1/2" - FP 3/8"	
6	2	2	610.041	HALF DOUBLE HOSE COLLAR	
7	18	18	610.035	HALF HOSE COLLAR (3/8")	
8	18	18	610.038	HALF HOSE COLLAR (1/2")	
9	2	2	220.476	CYLINDER	
10	23	23	600.039	COPPER WASHER 3/8"	
11	6	6	600.040	FITTING D 3/8"	
12	2	2	""	IRON PIPE	
13	4	4	610.469	FITTING	
14	2	2	600.799	LOCK VALVE VSD 3/8"	
15	2	2	600.869	SCREW M 6 X 40 DIN 931 8.8	
16	4	4	600.472	NUT M 6 DIN 980	
17	2	2	*****	IRON PIPE	
18	6	6	600.270	NIPPLE 3/8" - 3/8"	
19	2	2	610.729	HOSE SAE100 R2AT 3/8 O 3/8" - FP90 3/8"	
20	2	2	610.730	HOSE SAE100 R2AT 3/8 FP90 3/8" - FP 3/8"	
21	2	2	600.416	NIPPLE 3/8" - 1/2"	
22	1	1	600.977	FITTING MM-FG 3/8"	
23	1	1	600.974	FLOW DIVIDER	
24	1	1	210.188	PLATE	
25	2	2	600.970	SCREW M 6 X 60 DIN 931 8.8	
26	1	1	600.272	FITTING MM-M 3/8"	
27	2	2	620.031	HOSE SAE100 R2AT 3/8 FP 3/8" - FP90 3/8"	
28	2	2	210.816	CYLINDER	
29	2	2	210.221	ROD	
30	2	2	210.822	CYLINDER PIPE	

TABLE NO 920.177 HYDRAULIC KIT					
ITEM	Q.ty HD14	Q.ty HD16	PART NO	DESCRIPTION	NOTE
31	2	2	220.524	HEAD	
32	2	2	200.304	PISTON	
33	2	2	600.642	NUT M18 X1,5 DIN 982 - 8	
34	2	2	600.645	GASKET WRM 118149 (D 30)	
35	2	2	600.646	GASKET OR 117 (D 20,29 X 2,62)	
36	2	2	600.648	GASKET DBM 196133 BORE 50	
37	2	2	620.022	KIT GASKET	
38	2	2	****	ROD	
39	2	2	*****	CYLINDER PIPE	
40	2	2	220.432	HEAD	
41	2	2	****	SPACER	
42	2	2	220.433	PISTON	
43	2	2	610.928	NUT M30 X 2 DIN 985 - 8	
44	2	2	610.006	GASKET WRM 196228 (D 50)	
45	2	2	610.007	GASKET B 236196 (D 50)	
46	2	2	610.929	GASKET OR 845 + PBK (D 73,03 X 3,53)	
47	2	2	610.927	GASKET OR 123 (D 29,82 X 2,62)	
48	2	2	610.010	GASKET DBM 314236 BORE 80	
49	2	2	610.926	KIT GASKET	
50	1	1	610.838	HOSE SAE100 R2AT 3/8 MP 3/8" - FP 3/8"	
51	2	2	220.534	CYLINDER WITH ACCESOIRES	
52	1	1	610.043	PLATE	
53	1	1	610.044	SCREW	
54	2	2	610.424	SCREW	
55	2	2	610.423	HALF HOSE COLLAR	
56	2	2	620.012	PLUG 3/8"	
57	2	2	610.031	GASKET B 157118 (D.50)	
58	2	2	610.090	GASKET OR 826 (D.42,86 X 3,53)	
59	18	18	610.040	SCREW	

TABLE NO. 920.178 HYDRAULIC REAR OPENING

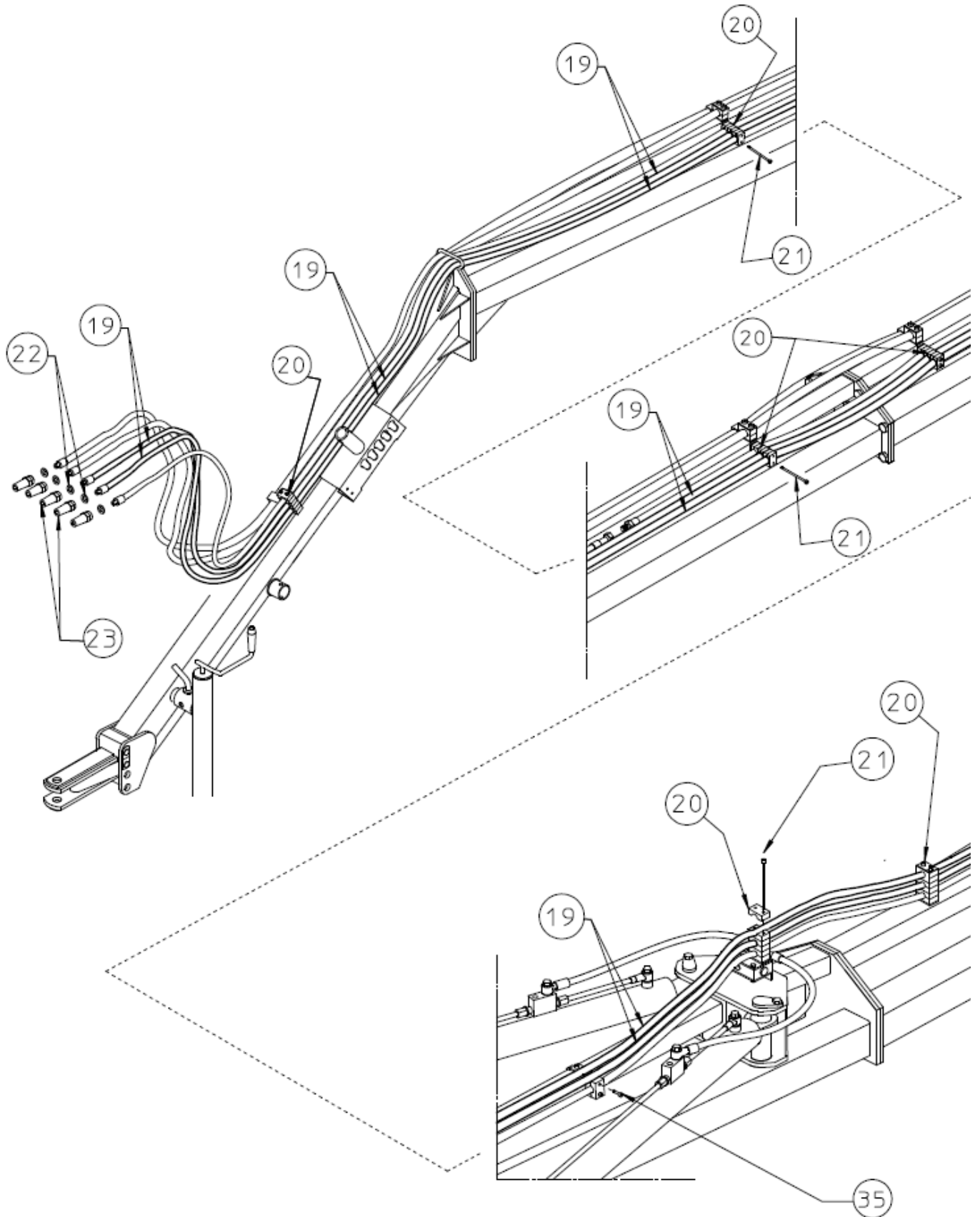


TABLE NO. 920.178 HYDRAULIC REAR OPENING

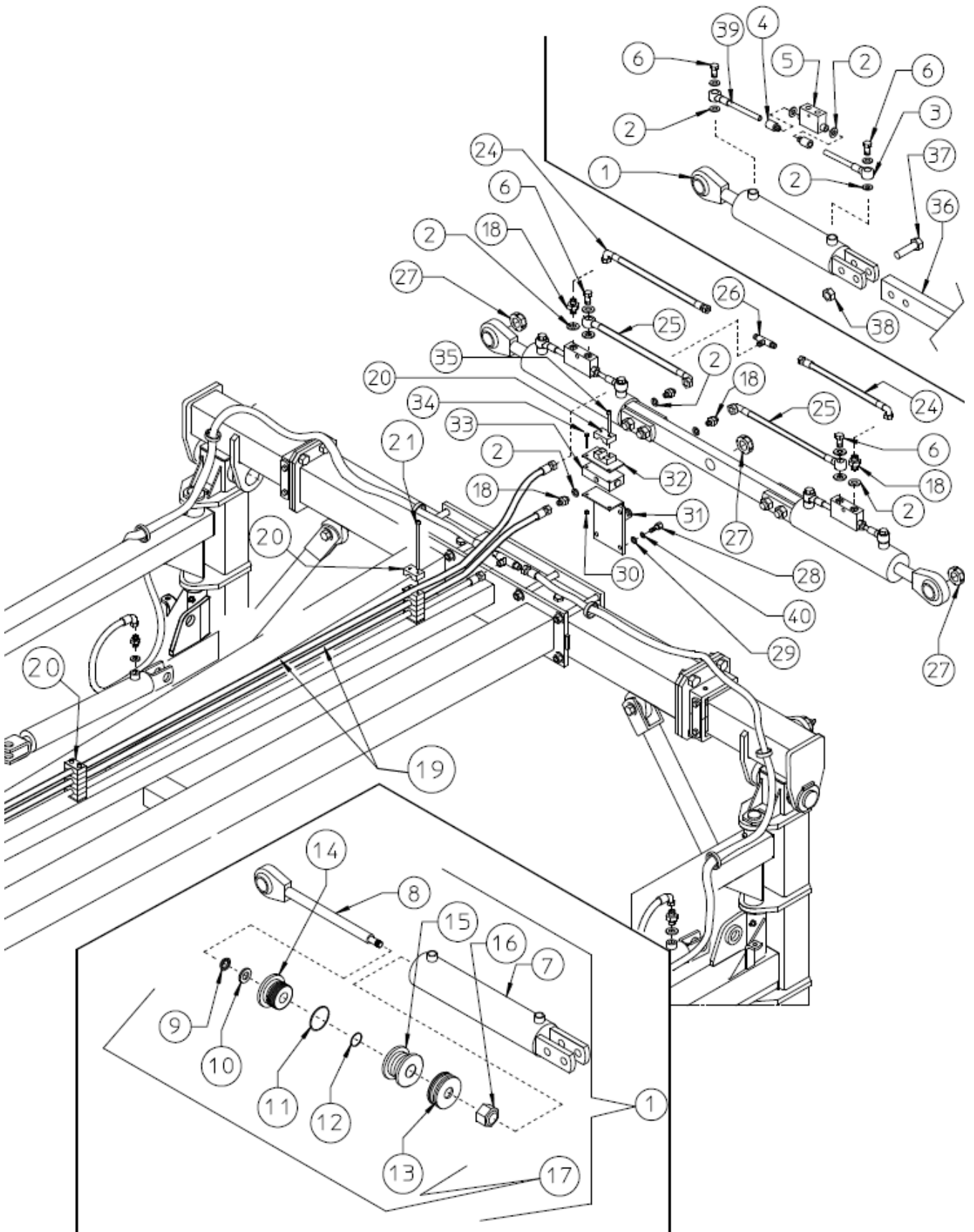
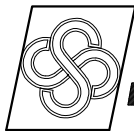


TABLE NO 920.178 HYDRAULIC REAR OPENING					
ITEM	Q.ty HD14	Q.ty HD16	PART NO	DESCRIPTION	NOTE
1	2	2	220.477	CYLINDER	
2	21	21	600.039	COPPER WASHER D 3/8"	*
3	2	2	610.511	IRON PIPE	*
4	4	4	610.469	FITTING	*
5	2	2	600.799	LOCK VALVE VSD 3/8"	*
6	6	6	600.040	FITTING D 3/8"	*
7	2	2	220.510	CYLINDER BARREL	
8	2	2	220.511	ROD	
9	2	2	600.645	GASKET WRM 118149 D 50	
10	2	2	610.031	GASKET B 157118 D 30	
11	2	2	600.875	GASKET OR 832 D 52,39 X 3,53	
12	2	2	600.646	GASKET OR117 D 20,29 X 2,62	
13	2	2	600.647	GASKET DBM 236173 BORE 60	
14	2	2	200.301	CYLINDER HEAD	
15	2	2	200.303	PISTON	
16	2	2	610.087	LOCK-NUT M20 X1.5 DIN 982 - 8	
17	2	2	610.030	SET OF GASKETS	
18	5	5	600.270	NIPPLE M 3/8"-M 3/8"	*
19	2	2	610.697	HOSE SAE100 R2AT 3/8 MP 1/2" - FP 3/8"	*
20	34	34	610.035	HALF HOSE COLLAR	
21	16	16	610.956	SCREW M6 X 95	
22	2	2	600.269	COPPER WASHER D 1/2"	*

TABLE NO 920.178 HYDRAULIC REAR OPENING					
ITEM	Q.ty HD14	Q.ty HD16	PART NO	DESCRIPTION	NOTE
23	2	2	600.273	RAPID COUPLING D 1/2"	*
24	2	2	620.032	HOSE SAE100 R2AT 3/8 FP 3/8" - F9P 3/8"	*
25	2	2	620.033	HOSE SAE100 R2AT 3/8 FP90 3/8" - O 3/8"	*
26	1	1	600.272	FITTING MM-M 3/8"	*
27	3	3	610.593	LOCK-NUT M30 X 1,5	
28	4	4	600.702	SCREW M8 X 25 DIN 933 8.8	
29	4	4	600.115	WASHER D 8,4 DIN 7972	
30	2	2	600.472	NUT M6 DIN 980	
31	1	1	220.259	CYLINDER SUPPORT	
32	1	1	220.283	HOSE SUPPORT	
33	1	1	600.974	FLOW DIVIDER	
34	2	2	600.970	SCREW M6 X 60 DIN 931 8.8	
35	4	4	610.037	SCREW M6 X 25 DIN 912 8.8	
36	1	1	220.483	CYLINDER TIE ROD	
37	4	4	600.292	SCREW M16 X 70 DIN 933 8.8	
38	4	4	600.080	NUT M16 DIN 980	
39	2	2	220.554	IRON PIPE	*
40	4	4	600.229	SPRING WASHER D 8,4	
*	1	1	220.498	HYDRAULIC KIT	HD/14-16



sitrex[®]

AGRICULTURAL MACHINERY

Zona Industriale-Viale Grecia, 8
06018 TRESTINA-(Perugia)-ITALY
Tel. +39.075.8540021-Telefax +39.075.8540523
e-mail: sitrex@sitrex.it www.sitrex.com

