

KODIAK

ROTARY CUTTERS

SAFETY FIRST:

Do not use or operate this equipment until this safety manual and assembly instructions (as applicable) have been read and understood.

 This Safety Alert Symbol calls your attention to important safety information in this manual.

Owner's Manual & Parts List

SAFETY - ASSEMBLY - OPERATION - MAINTENANCE - PARTS



Standard Duty Models
40", 48", 60", 72"

Medium Duty Models
60", 72"

Heavy Duty Models
60", 72", 84"

Roundbacks:

Medium Heavy Duty Models
60", 72"

Super Heavy Duty Models
72", 84"



KODIAK MFG., INC.

8849 Candies Creek Ridge Road NW • Charleston, TN 37310 • (423) 336-2390 • Fax (423) 336-8805
info@kodiakmfg.com • www.kodiakmfg.com For replacement manuals call (423) 336-2390



CONGRATULATIONS ON YOUR PURCHASE OF A KODIAK MFG., INC. ROTARY CUTTER.

Your new cutter is a durable, efficient and effective piece of equipment you can use with pride.
With proper care and use it will have a long and satisfying work life.

You must **READ** this safety manual before using your KODIAK cutter, even if you have had considerable experience with rotary cutters. We have worked hard to include vital information about safety, setup, operation and maintenance, as well as how to order parts and repair your cutter if needed. Taking the time now to read and understand the information from this manual will pay off later in a more trouble-free and safe operation that could prevent injury or death.

BECAUSE KODIAK MFG., INC., MAINTAINS AN ONGOING PROGRAM OF PRODUCT IMPROVEMENT, WE RESERVE THE RIGHT TO MAKE IMPROVEMENTS IN DESIGN OR CHANGES IN SPECIFICATIONS WITHOUT INCURRING ANY OBLIGATION TO INSTALL THEM ON UNITS PREVIOUSLY SOLD.

BECAUSE OF THE POSSIBILITY THAT SOME PHOTOGRAPHS IN THIS MANUAL WERE TAKEN OF PROTOTYPE MODELS, PRODUCTION MODELS MAY VARY IN SOME DETAIL. IN ADDITION, SOME PHOTOGRAPHS MAY SHOW SHIELDS REMOVED FOR PURPOSES OF CLARITY.
NEVER OPERATE THIS IMPLEMENT WITHOUT ALL SHIELDS IN PLACE.

NOTE

ALL REFERENCES MADE IN THIS MANUAL TO RIGHT, LEFT, FRONT, REAR, TOP OR BOTTOM ARE AS VIEWED FACING THE DIRECTION OF FORWARD TRAVEL WITH IMPLEMENT PROPERLY ATTACHED TO TRACTOR.



SAFETY FIRST

MUST READ ALL SAFETY INSTRUCTIONS BEFORE CUTTER IS OPERATED.

The information and illustrations in this manual were as correct and complete as possible at the time of printing. However, KODIAK continually makes minor changes and improvements, and your mower may have slight differences. KODIAK MFG., INC. reserves the right to change the design without notice.

PLEASE READ

IMPORTANT FEDERAL LAWS AND REGULATIONS* CONCERNING EMPLOYERS, EMPLOYEES AND OPERATORS

This sections is intended to explain in broad terms the concept and effect of the following federal laws and regulations. It is not intended as a legal interpretation of the laws and should not be considered as such.

U.S. PUBLIC LAW 91-596 (The Williams-Steiger Occupational and Health Act of 1970) OSHA

This Act Seeks:

“...to assure so far as possible every working man and woman in the nation safe and healthful working conditions and to preserve our human resources...”

DUTIES

Sec. 5(a) Each Employer –

- (1) shall furnish to each of its employees employment and a place of employment which are free from recognized hazards that are causing or are likely to cause death or serious physical harm to its employees.
- (2) shall comply with occupational safety and health standards promulgated under this Act.
 - (b) Each employee shall comply with occupational safety and health standards and all rules, regulations and orders issued pursuant to this Act which are applicable to his or her own actions and conduct.

OSHA Regulations

Current OSHA regulations state in part: “At the time of initial assignment and at least annually thereafter, the employer shall instruct every employee in the safe operation and servicing of all equipment with which the employee is, or will be involved.” These will include (but are not limited to) instructions to:

Keep all guards in place when the machine is in operation;

Permit no riders on equipment;

Stop engine, disconnect the power source, and wait for all machine movement to stop before servicing, adjusting, cleaning or unclogging the equipment, except where the machine must be running to be properly serviced or maintained, in which case the employer shall instruct employees as to all steps and procedures which are necessary to safely service or maintain equipment.

Make sure no one is within 300 ft. of machinery before starting the engine, engaging power, or operating the machine.

EMPLOYEE TRACTOR OPERATING INSTRUCTIONS:

1. Securely fasten your seat belt if the tractor has a ROPS.
2. Where possible, avoid operating the tractor near ditches, embankments, and holes.
3. Reduce speed when turning, crossing slopes, and on rough, slick, or muddy surfaces.
4. Stay off slopes too steep for safe operation.
5. Watch where you are going, especially at row ends, on roads, and around trees.
6. Do not permit others to ride.
7. Operate the tractor smoothly - no jerky turns, starts or stops.
8. Hitch only to the drawbar and hitch points recommended by tractor manufacturers.
9. When tractor is stopped, set brakes securely and use park lock if available.

Child Labor Under 16 Years Old

Some regulations specify that no one under the age of 16 may operate power machinery. It is your responsibility to know what these regulations are in your own area or situation. (Refer to U.S. Dept. of Labor, Employment Standard Administration, Wage & Home Division, Child Labor Bulletin #102.)



IMPORTANT SAFETY INFORMATION TO PREVENT INJURY OR DEATH



This symbol is used to call attention to safety information that should be followed by the operator to avoid accidents. When you see this symbol, carefully read the message that follows and heed its advice. Failure to comply with safety information could result in serious bodily injury or death.



DANGER: Indicates an imminently hazardous situation that, if not avoided, will result in death or serious injury. This signal word is to be limited to the most extreme situations typically for machine components which, for functional purposes, cannot be guarded.



WARNING: Indicates a potentially hazardous situation that, if not avoided, could result in death or injury, and includes hazards that are exposed when guards are removed. It may also be used to alert against unsafe practices.



CAUTION: Indicates a potentially hazardous situation that, if not avoided, may result in minor or moderate injury. It may also be used to alert against unsafe practices.

BEFORE OPERATING: Make sure there is nothing under the cutter (tools, feet, hands, etc.) that should not be there. Check to make sure all parts are assembled correctly. Set tractor lift control stop at a position that will prevent the drive shaft from contacting the front edge of the cutter when cutter is at full lift. (On some tractors, this won't be necessary.)

The cutter should only be engaged with the tractor PTO shaft when the tractor engine is at idle speed. Engaging the cutter at higher engine speeds will shorten the life of the cutter drive line. This may also damage the tractor.

For most cutting, ground speed of 3 to 5 MPH and a PTO speed of 540 RPM or 1000 RPM on specified 1000 RPM cutter is recommended. However, you may wish to adjust ground speeds for specific conditions.

After using the cutter for a full day, check the stumpjumper to make sure it is tight on the output shaft. If loose, torque the nut holding it at 350 ft-lbs of torque. Replace cotter key through output shaft to secure nut.

Check blade pivot bolts and blade carrier nuts frequently for looseness or wear. Loose blades can easily pierce a 1/4" steel plate and cause serious injury or death.

We recommend purchasing and properly installing chain guards with your rotary cutter. Make sure safety chain shielding and gearbox shields are in place at all times.

In addition to the design and configuration, hazard control and accident prevention are dependent upon the awareness, concern, prudence and proper training of personnel in the operation, transport, maintenance and storage of equipment. Lack of attention to safety can result in accident, personal injury, reduction of efficiency and worst of all... loss of life. Watch for safety hazards and correct deficiencies promptly. Use the following safety information as a general guide to safely operate this machine. Additional information is used throughout this manual for specific operating and maintenance procedures. **Read this manual and be familiar with limitations.**

PLEASE READ:

1. Read Operator's Manual. Failure to do so is considered misuse of this equipment.
2. Be familiar with machine's controls and read all the Caution, Warning and Danger decals on machine before starting/operating.
3. Before starting/operating, perform full inspection for obvious defects such as loose bolts, damaged components. Then correct.
4. Do not carry passengers or let children operate machine. Make sure all adults are properly instructed on operation.
5. Keep operation area clear of persons, children and pets. Cease operation if someone comes into operating area.
6. Clear the work area of objects that could be thrown or picked up by machine.
7. Use cardboard/wood rather than hands to search for hydraulic leaks! Escaping hydraulic oil under pressure can penetrate skin. Fluid injected into skin must be surgically removed within a few hours by a knowledgeable doctor or gangrene may result.
8. Do not operate without all guards and shields in place and in good condition.
9. Lower implement to ground, stop tractor engine, apply parking brake, and allow blades to completely stop before leaving tractor.
10. Keep hands and feet away from blades.
11. Do not operate this cutter along highways or in areas where people are present unless all sides of the unit are enclosed by permanent bands, safety chains or other factory approved safety shields that are in good repair.
12. Wear personal protective equipment such as, but not limited to, protection for eyes, ears, feet, hands and head when operating or repairing the equipment. Do not wear loose clothing or jewelry that may catch on equipment moving parts.
13. When performing adjustments/maintenance to cutter, first lower to ground or block securely at a workable height.
14. Never stand between tractor and cutter while tractor is being backed to the cutter hitch.
15. Reduce speed when transporting cutter to avoid bouncing and momentary loss of steering.
16. Use tractor flashing warning lights, day or night, when transporting cutter on road/highways unless prohibited by law.
17. Discuss all safety procedures, prior to operation, with anyone using the equipment other than yourself.
18. It is recommended that tractor be equipped with Rollover Protective System (ROPS) and seat belt be used during operations.

SAFETY FIRST

YOU MUST READ ALL SAFETY INSTRUCTIONS TO AVOID INJURY OR DEATH

YOU are responsible for the SAFE operation and maintenance of your Kodiak Rotary Cutter. YOU must ensure that you and anyone else who is going to operate, maintain, or work around the cutter be familiar with the operating and maintenance procedures and related SAFETY information contained in this manual. This manual will take you step-by-step through your working day and alerts you to all good safety practices that should be adhered to while operating the cutter.

The best safety device is an informed, careful operator. Remember, YOU are the key to safety. Good safety practices not only protect you but also the people around you. Make these practices a working part of your safety program.

PLEASE READ:

1. Rotary cutter owners must give operating instruction to operators or employees before allowing them to operate cutter, and at least annually thereafter per OSHA (Occupational Safety and Health Administration) regulation 1928.57.
 2. The most important safety device on this equipment is a safe operator. All accidents can be avoided when operators read, understand and follow the instructions and operating safety instructions in this manual.
 3. In addition to the design and configuration of equipment, hazard control and accident prevention are dependent upon the awareness, concern, prudence and proper training of personnel and review instructions frequently with existing workers. A person who has not read and understood all operating and safety instructions IS NOT QUALIFIED TO OPERATE THIS MACHINE. An untrained operator exposes himself and bystanders to possible serious injury or death.
 4. Do not modify the equipment in any way. Unauthorized modification may impair the function and/or safety and could affect the life of the equipment and also VOID the warranty.
-



SAFETY AT ALL TIMES

- OPERATOR SHOULD BE FAMILIAR WITH ALL FUNCTIONS OF THE UNIT.
 - OPERATE IMPLEMENT FROM THE DRIVER'S SEAT ONLY.
 - DO NOT LEAVE TRACTOR OR IMPLEMENT UNATTENDED WITH ENGINE RUNNING.
 - DISMOUNTING FROM A MOVING TRACTOR COULD CAUSE SERIOUS INJURY OR DEATH.
 - DO NOT ALLOW ANYONE TO STAND BETWEEN THE TRACTOR AND IMPLEMENT WHILE BACKING UP TO IMPLEMENT.
 - KEEP HANDS, FEET, AND CLOTHING AWAY FROM POWER-DRIVEN PARTS.
 - WEAR SNUG FITTING CLOTHING TO AVOID ENTANGLEMENT WITH MOVING PARTS.
 - CLEAR THE WORK AREA OF OBJECTS WHICH MIGHT BE PICKED UP/THROWN BY MOWER.
-

READ ALL SAFETY INSTRUCTIONS ON THE NEXT 4 PAGES BEFORE OPERATION.



This symbol is used to call attention to safety information that should be followed by the operator to avoid accidents. When you see this symbol, carefully read the message that follows and heed its advice. Failure to comply with safety information could result in serious bodily injury or death.



THINK SAFETY! WORK SAFELY!

NEVER OPERATE ROTARY CUTTERS NEAR PEOPLE, LIVESTOCK OR PETS. WARN CHILDREN TO STAY AWAY, AND STOP IF ONLOOKERS APPEAR. OBJECTS THROWN BY ROTATING BLADES CAN STRIKE WITH FATAL EFFECT.



DANGER

Keep hands and feet clear of mower while tractor engine is running. Failure to do so will result in serious injury or death from rotating blades or PTO shaft.



WARNING

Always keep the blade carrier and blade bolts tight. Loose blades could easily pierce a quarter inch steel plate and/or seriously injure personnel.



WARNING

Always keep all shields and chain guards furnished with machine in place and in good working order. Failure to do so could result in operator being struck by high speed rotating blades, thrown objects or being entangled in rotating parts, resulting in injury to personnel. Do not operate rotary cutter if any shields are missing.



CAUTION

Before operating the rotary cutter, carefully inspect the area on which the cutter will be used. Be sure to remove all objects that might be thrown by the rotating blades. Also, note any gullies, ditches, or rough terrain when you are inspecting the area.



DANGER

Wear personal protective equipment such as, but not limited to, protection for eyes, ears, feet, hands and head when operating or repairing the equipment. Do not wear loose clothing or jewelry that could catch on equipment moving parts.



DANGER

Always disengage driveline and block machine before performing any maintenance work on machine. Failure to do so will result in serious injury or death.



WARNING

ONLY the operator should ride on tractor and NO ONE SHOULD RIDE ON MOWER. Persons riding on tractor or mower could easily fall into the path of the tractor or mower resulting in serious injury or death. Persons riding on the mower could become entangled in the PTO resulting in serious injury or death.



CAUTION

Disengage PTO and turn off the tractor engine before leaving the tractor's operating station.

SAFETY FIRST

THINK SAFETY! WORK SAFELY!



WARNING

Check driveline connections to cutter and tractor before operation.

Be sure Quick Disconnect locks are operating and locked. Failure to do so could result in driveline becoming disconnected from the tractor and cutter. Personnel could be struck by fast rotating driveline resulting in serious injury or death.



CAUTION

Cutter blades should be replaced in pairs to maintain balance and avoid vibration.

Failure to do so may result in damage to machine.



DANGER

Use extreme care when operating on hillside or slope. Cutters are more likely to throw objects when operating on hillside and tractors can easily tip over if dropped in a hole. Either will result in serious injury to the operator.



WARNING

Always disengage PTO before transporting cutter. Failure to do so could result in persons being struck by loose objects thrown by rotating blades. Thrown objects from rotating blades can strike with killing force.



CAUTION

Operate tractor PTO at 540 rpm, or 1000 rpm on specified 1000 rpm cutters. Do not exceed.



WARNING

Always relieve pressure on hydraulic lines before disconnecting. Failure to do so could result in escaping fluid under pressure penetrating the skin causing serious injury. Use a piece of cardboard or wood rather than hands to search for hydraulic leaks.



WARNING

Keep mower deck clear of debris. There is a risk of fire when dry material accumulates and contacts heat generated from rotating blades.



SAFETY FIRST

ATTENTION!

Please observe all safety decals located on your mower.
Please read and observe all safety instructions on the next page
BEFORE OPERATING YOUR MOWER. Failure to observe safety instructions could result in personal injury or death.

KODIAK ROTARY CUTTERS

STANDARD DUTY MODELS

MEDIUM DUTY MODELS

HEAVY DUTY MODELS

40", 48", 60", 72"

60", 72"

60", 72", 84"

ROUNDBACKS

MEDIUM HEAVY DUTY MODELS

SUPER HEAVY DUTY MODELS

60", 72"

72", 84"



SET UP SAFETY

3-POINT LIFT TYPE SET UP

1. Loosen A-Frame and Lift Assembly to upright position.
2. Remove Bolt and Nut at top of A-Frame.
3. Back braces that were bolted to the outside of the upright arms should be moved to the inside of the upright arms and loosely tightened to the top of A-Frame. Attach back braces to the cutter deck. Tighten all bolts.
4. Remove check plug from each gearbox, inspect for proper EP-0 Grease level. Gearbox lube cannot be accurately checked until the unit has been operated for 15 - 20 minutes.
5. Install gearbox shield onto face of gearbox with the 4 bolts and washers provided in the face of the gearbox.
6. Grease both universal joints of the PTO shaft. Grease the telescoping surfaces of the PTO shaft. Grease universal joints of coupling shafts between gearboxes.
7. Grease tailwheel forks.
8. Install gearbox end (slip clutch) of PTO shaft onto center gearbox.
9. If shearbolt unit, take retaining ring off gearbox shaft, slide PTO shaft on, install shearbolt and retaining clip back on gearbox shaft. **Failure to install the drive shaft retaining clip can result in damage to mower and drive shaft, as well as injury or death.**

PULL TYPE SET UP

1. Place cutter on 4" blocks.
2. Attach wheel lift tube to cutter deck.
3. Attach turn buckle to the deck and then to the wheel lift bracket. This controls wheel height of unit.
4. Attach tongue with 3/4" x 2 1/4" bolts to the front cutter ears.
5. Attach strap to the center front angle hole, and then to the tongue.
6. Tighten all bolts and nuts.
7. Remove check plug from gearbox, inspect for proper EP-0 Grease level. Gearbox lube cannot be accurately checked until the unit has been operated for 15 - 20 minutes.
8. **INSTALL Gearbox SHIELD ONTO FACE OF GEARBOX WITH THE 4 BOLTS AND WASHERS PROVIDED ON THE FACE OF Gearbox.**
9. Grease both universal joints of the PTO shaft. Grease the telescoping surfaces of the PTO shaft. Grease universal joints of coupling shafts between gearboxes.
10. Grease tailwheel forks and tubes.
11. Install gearbox end (slip clutch) of PTO shaft onto center gearbox.
12. If shearbolt unit, take retaining ring off gearbox shaft, slide PTO shaft on, install shearbolt and retaining clip back on gearbox shaft. **Failure to install the drive shaft retaining clip can result in damage to mower and drive shaft, as well as injury or death.**
13. **BEFORE ENGAGING PTO, REMOVE BLOCKS FROM UNDER CUTTER.**



WARNING

USE ONLY A 1/2" X 3" GRADE 2 SHEARBOLT AND LOCK WASHER. IF WRONG SIZE OR GRADE SHEARBOLT IS USED, IT COULD RESULT IN THE FOLLOWING:
SERIOUS DAMAGE TO CUTTER AND/OR SERIOUS INJURY OR DEATH.



WARNING

FAILURE TO INSTALL RETAINING CLIP WILL ALLOW DRIVELINE TO SWING FREELY IF BOLT IS SHEARED, CAUSING POSSIBLE INJURY OR DEATH.



SLIP CLUTCH - OPERATIONAL CHECK

The slip clutch serves as overall protection for the tractor, driveline, and gearbox. Even though new clutch assemblies are “run-in” and checked for torque prior to shipment, re-adjustment may be advisable if the clutch has been exposed to weather for an extended period of time. The clutch facing and plates should be inspected for rust and/or corrosion. After implement has been stored for 30 days or more, perform the following operational check:

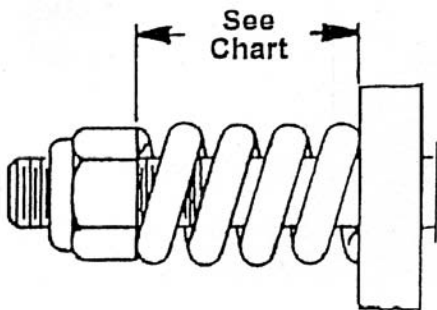
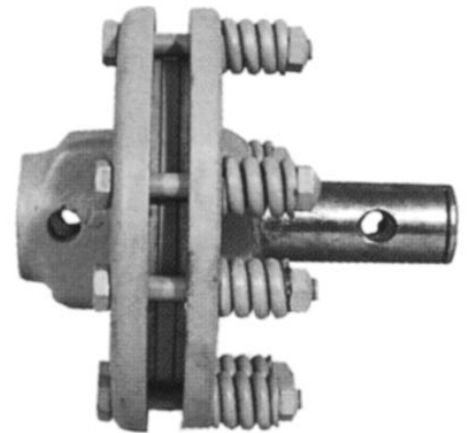
1. Make a trial run in the heaviest operating conditions expected. If the clutch slips noticeably, tighten the 8 adjusting bolts no more than 1/2 turn between trial runs until the clutch slippage is reduced.
2. Scribe a mark across the clutch facing. When subjected to shock loads, a separation of the marks will assure that clutch setting is correct. **NOTE: Check the clutch periodically during the first hour of operation for excessive heat build-up to undetected slippage.**

If the clutch is being rebuilt (new facing and/or plates), it is necessary to “run-in” these parts prior to final adjustment. The plates should be thoroughly cleaned and free of foreign material, as well as being checked with a straight edge for warping. Warped plates cannot be adjusted properly and will not hold. To accomplish the “run-in” after assembly, follow the procedure below:

1. Tighten all adjusting bolts evenly until the clutch cannot be slipped by hand.
2. With the blade carrier locked in a stationary position, operate with the PTO at idling speed (approx. 100 rpm) until evidence of heating is noted. **IMPORTANT: DO NOT ALLOW THE CLUTCH TO OVERHEAT.**
3. Discontinue operation and allow the clutch to cool completely. **This is very important.**
4. After the clutch has cooled, tighten all the adjusting bolts down evenly and proceed with regular clutch adjusting procedures as described above.

SLIP CLUTCH ADJUSTMENT

The slip clutch is factory preset to the correct torque for protecting implement and tractor. Periodic adjustment is recommended. Should adjustment be needed, first check to be sure all spring lengths are the same. Initial spring length is shown on chart below. If necessary, adjust nut on any spring that is unequal. Adjust all eight spring retaining nuts 1/3 of a turn (2 flats on a nut) and check clutch slippage. If further adjustment is necessary, do so in 1/3 turn increments. Adjust only to provide sufficient torque to prevent slippage under normal conditions. Occasional slippage is normal for drive train protection. If satisfactory results cannot be obtained, consult your Kodiak dealer.



CLUTCH SPRING LENGTH CHART

EG / Comer	Bondioli & Pavesi
1.27" (32.2mm)	1.15" (29.3mm)
1.28" (32.4mm)	1.12" (28.5mm)

IMPORTANT

DO NOT OVERTIGHTEN NUT AND CAUSE SPRING TO BECOME SOLID, AS THIS WILL CAUSE SHAFT TO FAIL.



CAUTION:

USE JACKSTANDS, BLOCKS AND SAFETY SHOES WHEN PERFORMING MAINTENANCE.

OPERATION

BEFORE OPERATING: Make sure there is nothing under the cutter (tools, feet, hands, etc.) that should not be there. Check to make sure all parts are assembled correctly. Set tractor lift control stop at a position that will prevent the drive shaft from contacting the front edge of the cutter when cutter is at full lift. (On some tractors, this won't be necessary.)

The cutter should only be engaged with the tractor PTO shaft when the tractor engine is at idle speed. Engaging the cutter at higher engine speeds will shorten the life of the cutter drive line. This may also damage the tractor.

For most cutting, ground speed of 3 to 5 MPH and a PTO speed of 540 RPM is recommended. However, you may wish to adjust ground speeds for specific conditions.

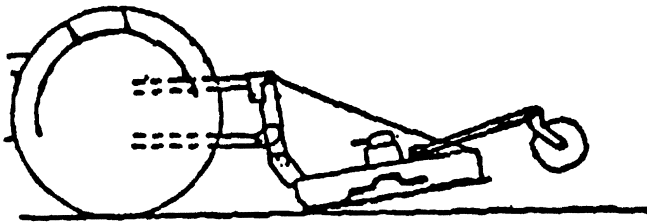
After using the cutter for a full day, check the stumpjumper to make sure it is tight on the output shaft. If loose, torque the nut holding it at 350 ft-lbs of torque. Replace cotter key through output shaft to secure nut.

Check blade pivot bolts and blade carrier nuts frequently for looseness or wear. Loose blades can easily pierce a 1/4" steel plate, and cause serious injury or death.

We recommend purchasing and properly installing chain guards with your rotary cutter. Make sure safety chain shielding and gearbox shields are in place at all times.

ADJUSTING LEVEL OF CUTTER ON YOUR TRACTOR

Cutter Too Low in Front

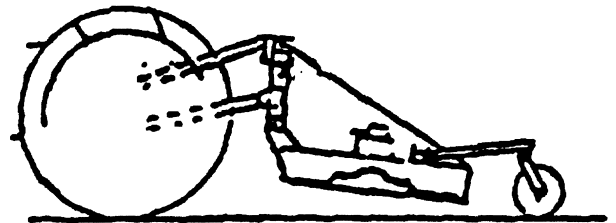


INCORRECT

Blade too high on sides causing skipping and uneven cutting; blades become worn.

Blade striking ground causing slip clutch to slip excessively.

Cutter Too Low in Rear

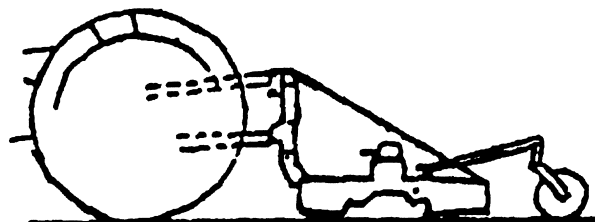


INCORRECT

Excessive wear and tear on tail wheel. Rear skirt dragging causing balling up problems.

Blade too high on sides causing skipping and uneven cutting.

Cutter Level



CORRECT

Blade cutting evenly with grass being spread evenly.

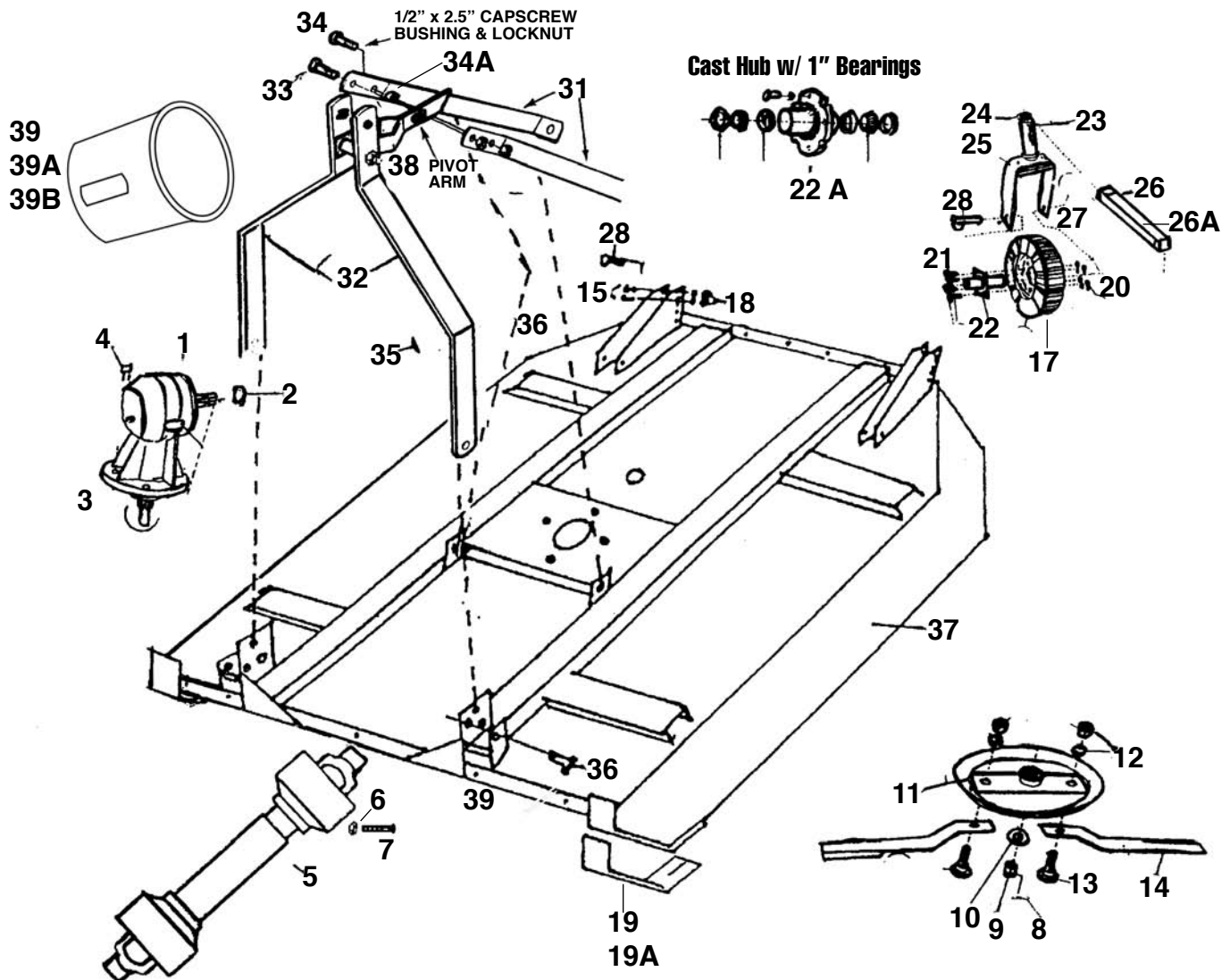


TROUBLESHOOTING

PROBLEM	CAUSE	SOLUTION
<i>Excessive Vibration</i>	<ol style="list-style-type: none"> 1. Blades are not free to swing 2. Blades are out of balance 	<ol style="list-style-type: none"> 1. Check bushing and blade movement 2. Check blades for damage or replace
<i>Unusual Noise</i>	<ol style="list-style-type: none"> 1. Loose blade bolts or worn bushings 2. Bent bar blade carrier, blades 3. Deck bent causing blades to hit 4. Gearbox low of grease 	<ol style="list-style-type: none"> 1. Tighten bolts, check busings for wear and change as needed. 2. Replace bar blade carrier 3. Straighten deck 4. Check seals in gearbox and fill to proper level
<i>Poor Cutting</i>	<ol style="list-style-type: none"> 1. Not maintaining proper PTO speed 2. Improperly adjusted 3. Forward speed is too fast for blade speed 4. Dull blades 5. Improper clutch adjustment 	<ol style="list-style-type: none"> 1. Check PTO with tachometer and operate at proper RPM 2. Adjust according to operator's manual 3. Coordinate forward speed with blade speed 4. Sharpen blades 5. Adjust clutch according to manual
<i>Machine Straking</i>	<ol style="list-style-type: none"> 1. Cutting too high, leaving wheel tracks 2. Not maintaining proper RPM speed 3. Forward speed too fast 	<ol style="list-style-type: none"> 1. Cut lower and slower forward speed 2. Maintain proper RPM speed 3. Slow down
<i>PTO Will Not Telescope</i>	<ol style="list-style-type: none"> 1. Improper lubrication 2. PTO twisted 3. Bent PTO 4. Shields damaged 	<ol style="list-style-type: none"> 1. Separate and fill female tube half full of grease 2. Replace twisted portion. Caution operator not to ground out machine 3. PTO too long. Size to tractor according to manual 4. Replace
<i>PTO Twisted</i>	<ol style="list-style-type: none"> 1. Over torqued 2. Not maintaining correct PTO speed 	<ol style="list-style-type: none"> 1. Do not allow blades to come in contact with the ground 2. Maintain proper PTO speed
<i>Excessive Clutch Slippage</i>	<ol style="list-style-type: none"> 1. Improperly adjusted 2. Burnt or damaged facing 	<ol style="list-style-type: none"> 1. Adjust according to manual 2. Rework clutch or replace according to manual



Kodiak Rotary Cutters - 3 Point Hitch



Ref. No.	Description	Part No.	ST-40	ST-48	ST-60	ST-72	MD-60 RB-60	MD-72 RB-72	HD-72 RB-SHD-72SC*	HD-84 RB-SHD-84SC*
1	Gearbox 40 hp - Splined	103 SP	1	1	1	1				
1	Gearbox 40 hp - Smooth	101 ST	1 (OP)	1 (OP)	1 (OP)	1 (OP)				
1	Gearbox 90 hp - Smooth	102 M					1	1		
1	Gearbox 90 hp - Splined	103 H					1	1		
2	1 3/8" Snap Ring	104 SMH	1	1	1	1	1	1	1	1
3	5/8" Nut & Lock Washer	105 S	4	4	4	4				
3	3/4" Nut & Lock Washer	106 MH					4	4	4	4
4	5/8" x 2" Bolt	107 R	4	4	4	4				
4	3/4" x 3" Bolt	108 MH					4	4	4	4
5	PTO, Complete	109-40	1							
5	PTO, Complete	110-48		1						
5	PTO, Complete	111-60			1		1			
5	PTO, Complete	112-72				1		1		
5	PTO, Complete Slip/Clutch	111-60-S					1 (OP)	1 (OP)		

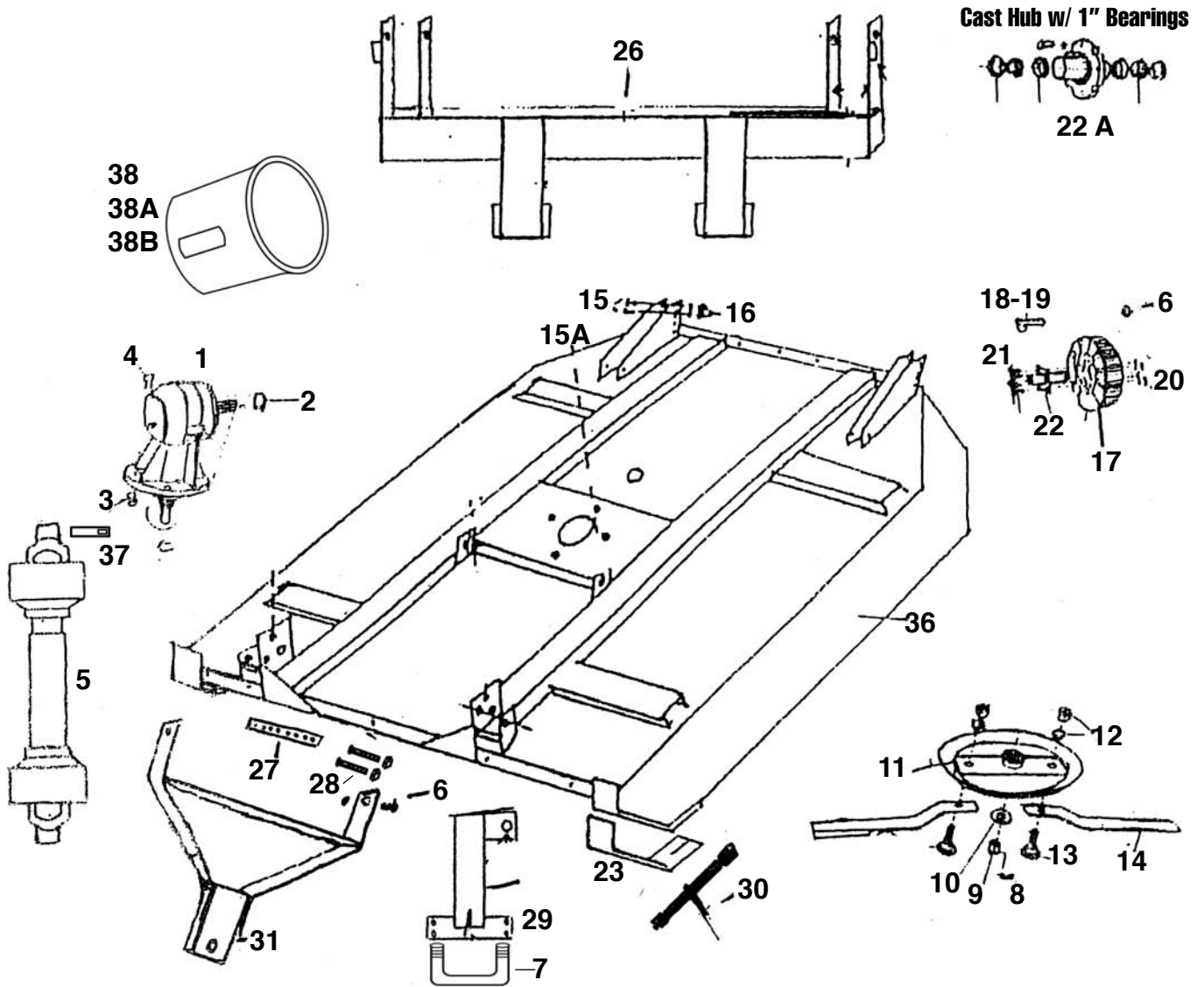
Kodiak Rotary Cutters - 3 Point Hitch

Ref. No.	Description	Part No.	ST-40	ST-48	ST-60	ST-72	MD-60 RB-60	MD-72 RB-72	HD-72 RB-SHD-72SC*	HD-84 RB-SHD-84SC*	
5	PTO, with Slip Clutch	113-72SC							1		
5	PTO, with Slip Clutch	113-84H								1	
6	1/2" Lock Nut	115 SMH	1	1	1	1	1	1			
7	1/2" x 3" Grade 2 Bolt w/nut	200 SBLT	1	1	1	1	1	1			
8	1/8" Cotter Pin	117 SMH	1	1	1	1	1	1	1	1	
9	1" Fine Thread Nut	118 SMH	1	1	1	1	1	1	1	1	
10	1" Washer - Flat	119 SMH	1	1	1	1	1	1	1	1	
11	Spun Metal Dish Blade Carrier	120 S	1	1	1	1					
11	1/2"x16 1/2" Flat Blade Carrier	121 MH					1	1	1		
11	5/8">x27 1/2" Flat Blade Carrier	(Oblong) 122 H								1	
12-13	1 1/8" Blade Bolt Kit	124 SMH	2	2	2	2	2	2	2	2	
14	Mower Blade Total Length 15"	K-215	2								
14	Mower Blade Total Length 18 1/2"	K-213		2							
14	Mower Blade Total Length 24 1/2"	K-214			2		2				
14	Mower Blade Total Length 30 1/4"	K-212				2		2			
14	HD Mower Blade 1/2"x4"x30 3/4"	K-210							2	2	
15	1/2" x 4 1/2" Bolt		2	2	2	2	2	2	4	4	
16	1/2" Nut, Self Locking	126 SMH	2	2	2	2	2	2	4	4	
17	Tail Wheel (No TAT)	127 SMH	1	1	1	1	1	1	2	2	
18	1/2" Lock Nuts		2	2	2	2	2	2	4	4	
19	Replaceable Skid Shoes	SS60-72			2	2	2	2	2		
19A	Replaceable Skid Shoes	SS84								2	
20	1/2" Nut, Lock Washer	130 SMH	4	4	4	4	4	4	8	8	
21	1/2" x 1 1/2" Bolt	131 SMH	4	4	4	4	4	4	8	8	
22	Tail Wheel Hub, Cast	132 SM	1	1	1	1	1	1			
22A	Sealed Bearing Hub	133 H							2	2	
23	Tail Wheel Bracket	134 SMH	1	1	1	1	1	1			
23A	Tail Wheel Bracket	134 H							2	2	
24	1/2" x 1 1/2" Bolt	135 SMH	1	1	1	1	1	1	2	2	
25	1 1/8" Flat Washer	136 SMH	1	1	1	1	1	1	2	2	
26	Tail Wheel Tube	137 SMH	1	1	1	1	1	1			
26A	Tail Wheel Tube	137 H							2	2	
27	3/4" x 7 1/2" Axle Bolt w/ Nut	128 SM	1	1	1	1	1	1			
28	1" x 8" Axle Bolt w/ Nut	128 H							2	2	
31	Back Braces	142 SM	2	2	2	2	2	2			
31A	Back Braces	143 H							2	2	
32	1/2" x 4" A-Frame	144 SM	2	2	2	2	2	2			
32	5/8" x 4" A-Frame	145 H							2	2	
33	1/2" x 3" Capscrew, Lock Nut	146 SMH	1	1	1	1	1	1	1	1	
34	1/2" x 2 1/2" Capscrew, -	147 SMH	1	1	1	1	1	1	1	1	
34A	Stop Bushing	S B	1	1	1	1	1	1	1	1	
35	7/8" Nut, Lock, Fine Thread	148 SM	2	2	2	2	2	2			
35	3/4" S-Lock Nut	149 H							2	2	
36	Lift Pin Bushing	L P B	2	2	2	2	2	2	2	2	
36A	Lift Pin Cat. #1	151 SM	2	2	2	2	2	2			
36A	Lift Pin Cat. #2	708							2	2	
37	Main Body	152 SMH	1	1	1	1	1	1	1	1	
38	Pivot Arm	153 H							1	1	
38A	Pivot Bushing	P B	1	1	1	1	1	1	1	1	
39	Gearbox Shield Shear Pin	GS - SM	1	1	1	1	1	1			
39A	Gearbox Shield Slip Clutch	GS - MD							1		
39B	Gearbox Shield 7' Cutter	GS - LG								1	
**	Metal gearbox shields are optional and available for all size cutters.										

* See Page 21 for Gearbox Requirements



Kodiak Rotary Cutters - Pull Type

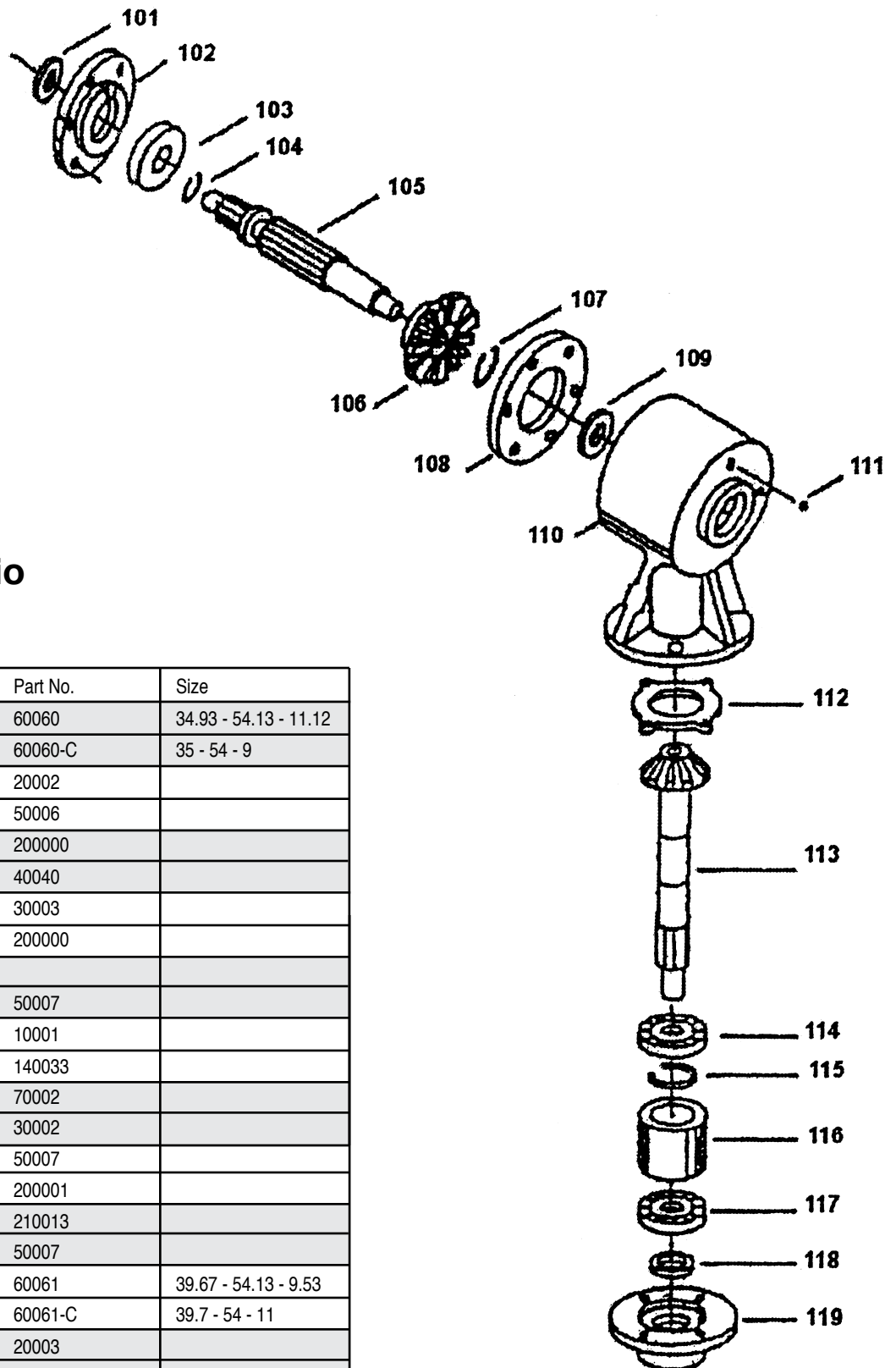


Ref. No.	Description	Part No.	PT-40	PT-48	PT-60	PT-72	PT-60 MD	PT-72 MD	PT-72 HD	PT-84 HD
1	Gearbox 40 hp - Splined	103 SP	1	1	1	1				
1	Gearbox 40 hp - Smooth	101 ST	1 (OP)	1 (OP)	1 (OP)	1 (OP)				
1	90 hp - Smooth	102 M					1	1		
1	90 hp - Splined	103 H					1 (OP)	1 (OP)	1	1
2	1 3/8" Snap Ring	104 SMH	1	1	1	1	1	1	1	1
3	5/8" Nut & Lock Washer	105 S	4	4	4	4	4			
3	3/4" Nut & Lock Washer	106 MH						4	4	4
4	5/8" x 2" Bolt	107 R	4	4	4	4	4			
4	3/4" x 3" Bolt	108 MH						4	4	4
5	PTO, Complete	111-60	1	1						
5	PTO, Complete	112-72			1					
5	PTO, Complete Slip/Clutch	113-72 HP				1		1	1	
5	PTO, Complete Slip/Clutch	113-84								1

40 HP Gearbox

Gearbox Assembly

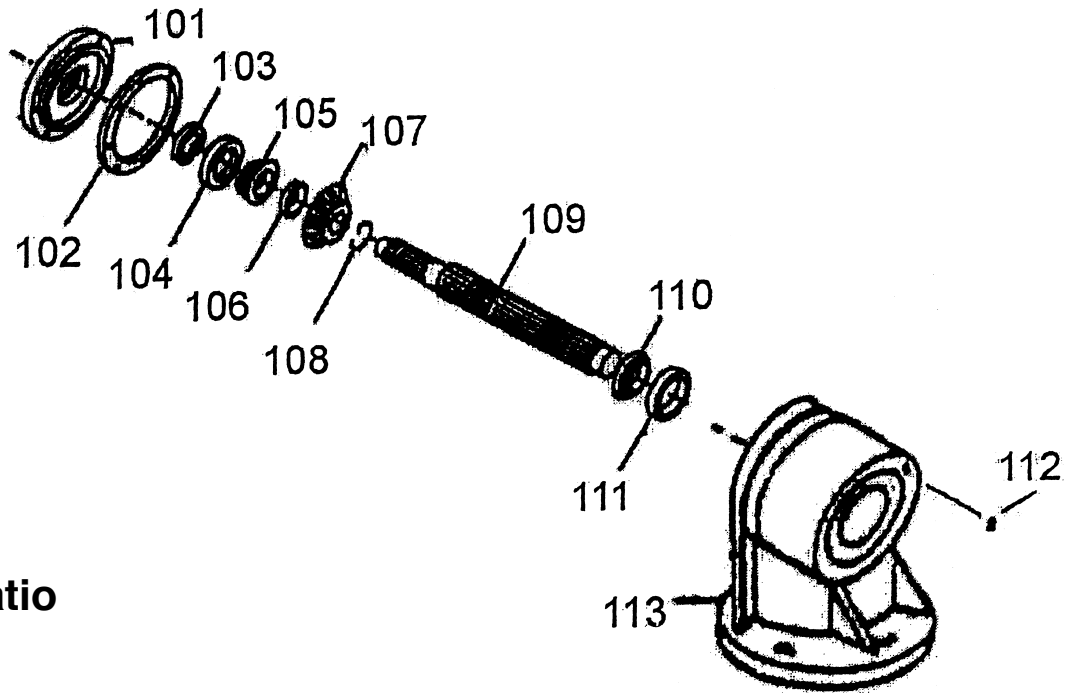
Model GB-30
40 HP - 1:1.47 Ratio



Key No.	Description	Part No.	Size
101	Input Seal 60002	60060	34.93 - 54.13 - 11.12
	Smooth Black Gearbox	60060-C	35 - 54 - 9
102	Face Plate	20002	
103	Ball Bearing 207K	50006	
104	Retaining Ring	200000	
105	Input Shaft	40040	
106	Input Gear 22T	30003	
107	Retaining Ring	200000	
108	Shim .004		
109	Ball Bearing 208K	50007	
110	Housing	10001	
111	Pressure Relief Plug	140033	
112	Gasket	70002	
113	Output Shaft w/ Gear 15T	30002	
114	Ball Bearing 208K	50007	
115	Retaining Ring	200001	
116	Spacer	210013	
117	Ball Bearing 208K	50007	
118	Output Seal 60003	60061	39.67 - 54.13 - 9.53
	Smooth Black Gearbox	60061-C	39.7 - 54 - 11
119	Bottom Cap	20003	



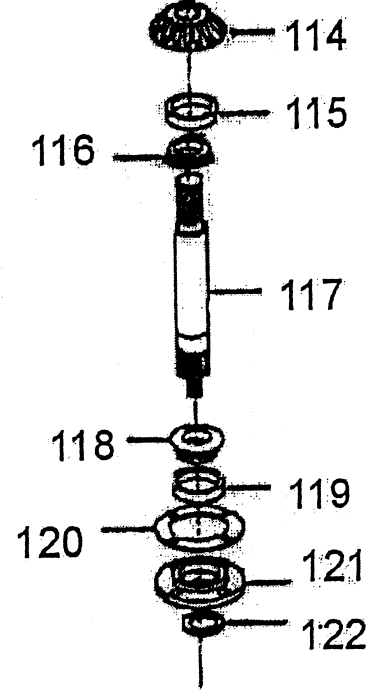
90 HP Gearbox



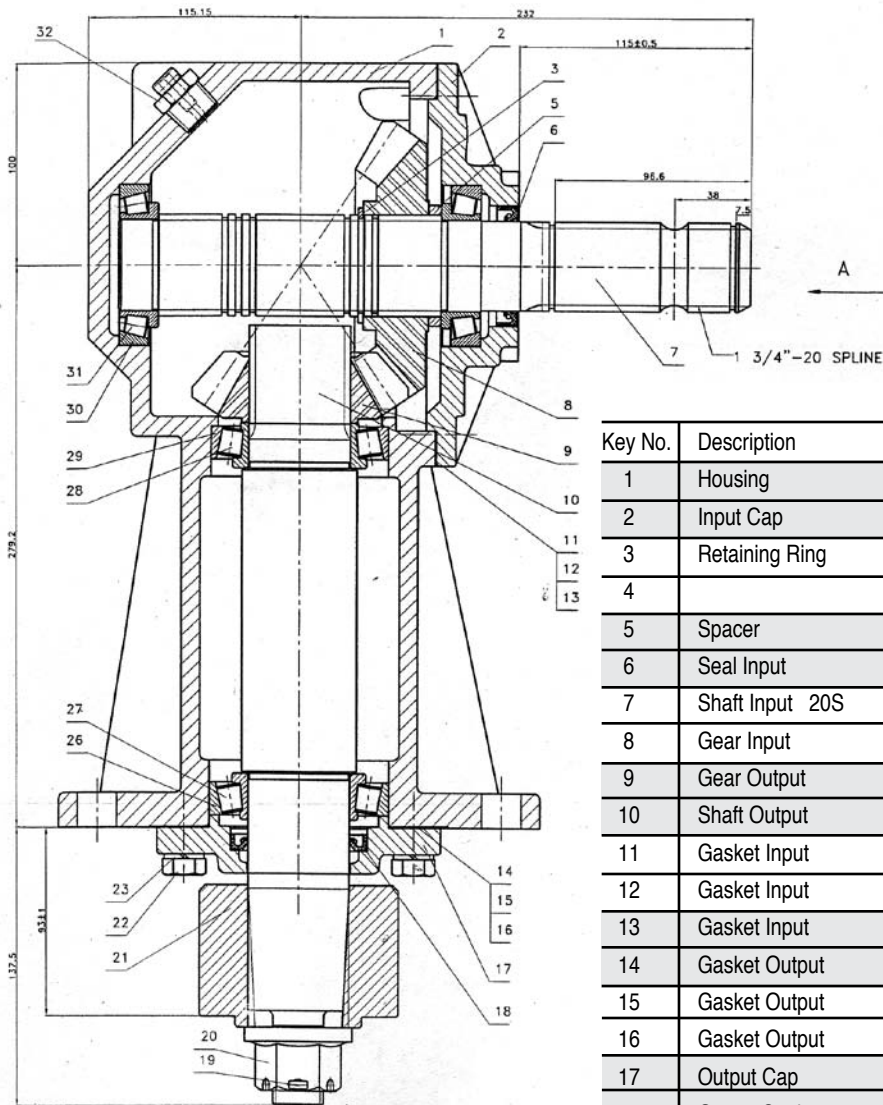
Gearbox Assembly

Model GB-61
90 HP - 1:1.46 Ratio

Key No.	Description	Part No.	Size
101	Face Plate	20162	
102	Shim	A/R	
103	Input Seal	60005	34.93 - 60.45 - 9.53
	Smooth Black Input Seal	60005-C	35 - 60 - 15
104	Cup LM603014	50013	
105	Bearing LM603049	50012	
106	Spacer	90055	
107	Input Gear 19T	30039	
108	Retaining Ring	200003	
109	Input Shaft	40135	
110	Bearing	50012	
111	Cup	50013	
112	Pressure Relief Valve	140033	
113	Housing	10112	
114	Output Gear 13T	30038	
115	Cup 362A	50014	
116	Bearing 368	50008	
117	Output Shaft	40112	
118	Bearing 368	50008	
119	Cup 362	50015	
120	Shim	A/R	
121	Bottom Cap	20005	
122	Output Seal	60004	50.80 - 68.38 - 11.12
	Smooth Black Output Seal	60004-C	50.84 - 68.5 - 11



ROUNDBACK Gearbox



Key No.	Description	Part No.	Qty.	Spec.
1	Housing	RW-R0811	1	
2	Input Cap	RW-R0512	1	
3	Retaining Ring	RW-404	1	58 - 48 - 2.5
4				
5	Spacer	RW-R0851	1	
6	Seal Input	RW-205	1	44 - 60 - 11
7	Shaft Input 20S	RW-R0821	1	
8	Gear Input	RW-R0522	1	19T 1:1.46
9	Gear Output	RW-R0524	1	13T 1:1.46
10	Shaft Output	RW-R0823	1	
11	Gasket Input	RW-R0541	A/R	
12	Gasket Input	RW-R0542	A/R	
13	Gasket Input	RW-R0543	A/R	
14	Gasket Output	RW-R0544	A/R	
15	Gasket Output	RW-R0545	A/R	
16	Gasket Output	RW-R0546	A/R	
17	Output Cap	RW-R0513	1	
18	Output Seal	RW-501	1	50.8 - 68.5 - 12
19	Cotter Pin	RW-501	1	5*45
20	Lock Nut	RW-R0132	1	1" - 14UNC
21	Blade Hub		1	
22	Screw	RW-303	4	1/2" - 13UNC #1.5
23	Washer	RW-304	4	1/2"
24	Screw	RW-301	8	3/8" - 16UNC #1
25	Washer	RW-302	8	3/8"
26	Bearing Cup	RW-103	1	362
27	Bearing Cone	RW-104	1	368
28	Bearing Cone	RW-106	1	368A
29	Bearing Cup	RW-105	1	362A
30	Bearing Cup	RW-107	2	LM603014
31	Bearing Cone	RW-108	2	LM603049
32	Plug Pressure Relief	RW-502	1	KG 1 1/2 - 14NPTF
33	Pipe Plug - SQ. HD	RW-503	1	KG 1/2 - 27NPTF
34	Tag	RW-R0852	1	50*25

Gearbox for Super Heavy Duty Roundback Cutters

Model GB-81
180 HP - 1:1.46 Ratio

For Roundback Models:
RB-SHD-72-SC • RB-SHD-84-SC

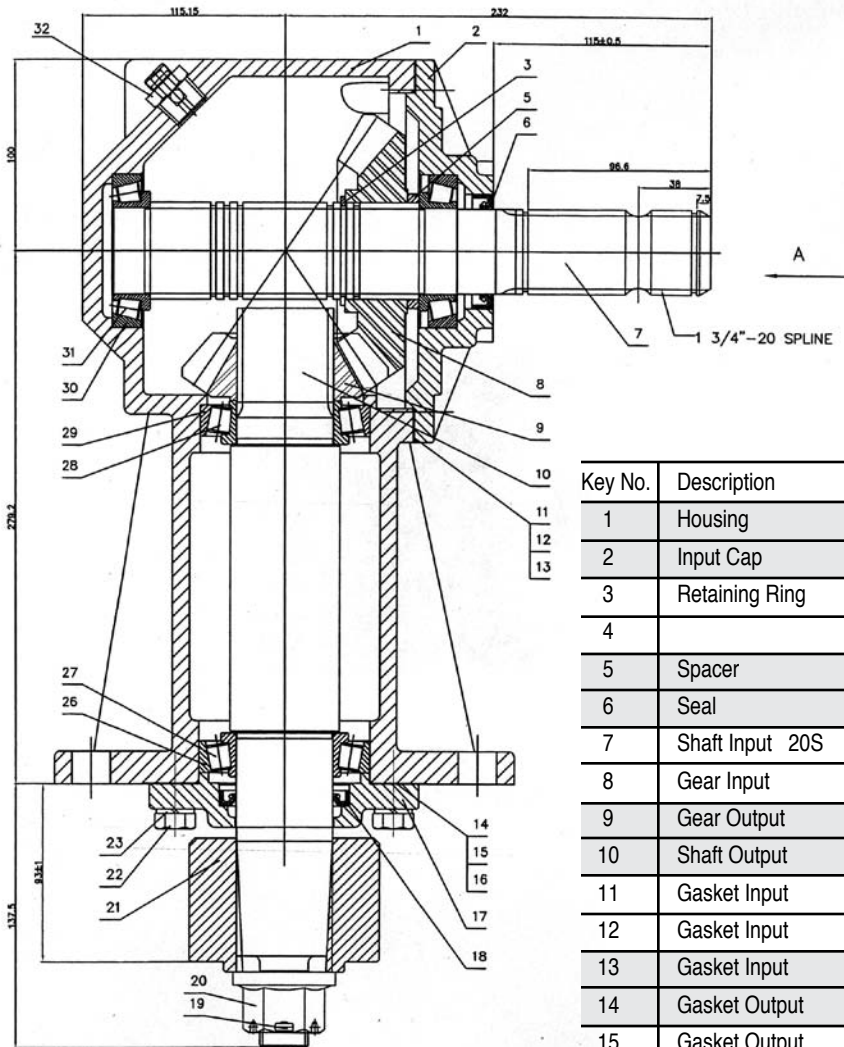


180 HP Gearbox

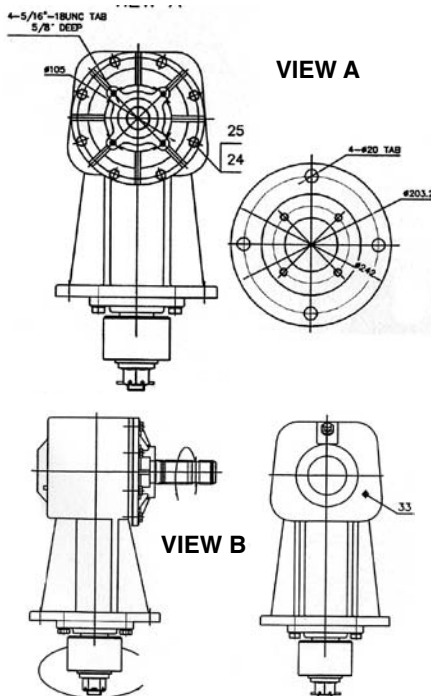
Gearbox for 1000 RPM Cutters

Model GB-81-121
180 HP - 1.21:1 Ratio

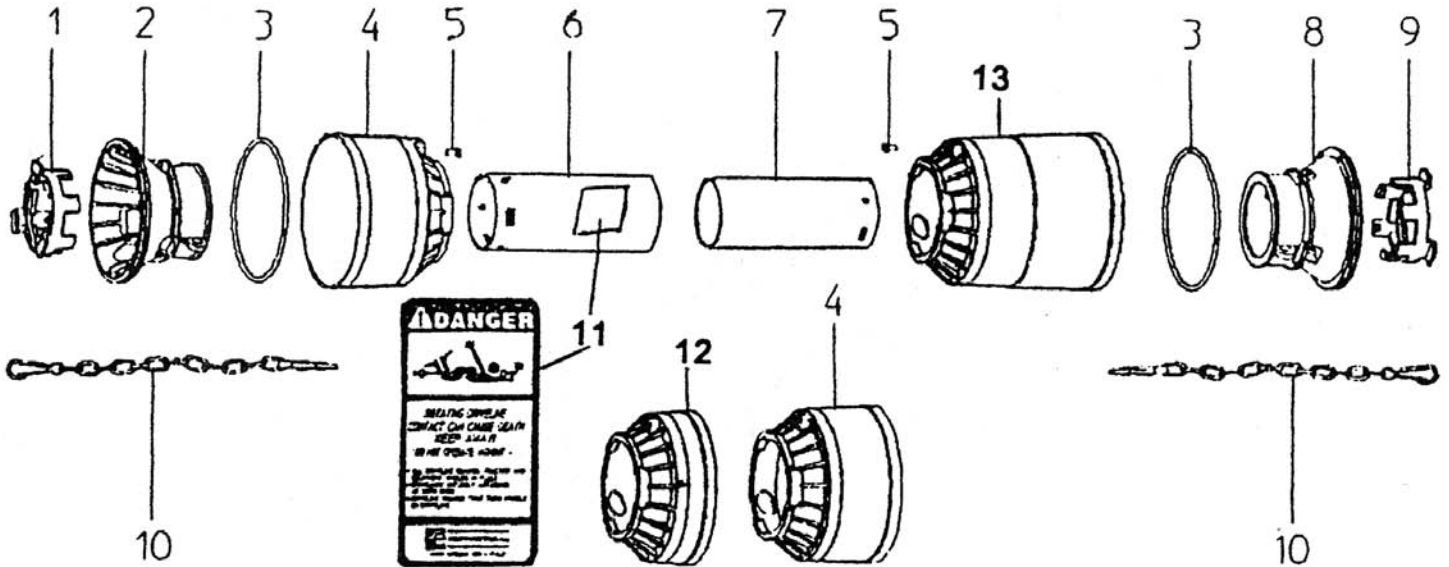
For 180 HP Extra HD Models:
XH-72 • XH-84 • XH-96 • XH-120



Key No.	Description	Part No.	Qty.	Spec.
1	Housing	RW-R0811	1	
2	Input Cap	RW-R0512	1	
3	Retaining Ring	RW-404	1	58 - 48- -2.5
4				
5	Spacer	RW-R0851	1	
6	Seal	RW-205	1	44.5 - 60 - 11
7	Shaft Input 20S	RW-R0821	1	
8	Gear Input	RW-R0924	1	14T 1:1.21
9	Gear Output	RW-R0922	1	17T 1:1.21
10	Shaft Output	RW-R0823	1	
11	Gasket Input	RW-R0541	VAR	
12	Gasket Input	RW-R0542	VAR	
13	Gasket Input	RW-R0543	VAR	
14	Gasket Output	RW-R0544	VAR	
15	Gasket Output	RW-R0545	VAR	
16	Gasket Output	RW-R0546	VAR	
17	Output Cap	RW-R0513	1	
18	Seal	RW-203	1	50.8 - 68.5 - 12
19	Splint	RW-501	1	5*45
20	Lock Nut	RW-R0132	1	1" - 14UNC
21	Blade Hub	RW-R0431	1	
22	Screw	RW-303	4	1/2" - 13UNC #1.5
23	Washer	RW-304	4	1/2"
24	Screw	RW-301	8	3/8" - 16UNC #1
25	Washer	RW-302	8	3/8"
26	Bearing Cup	RW-103	1	362
27	Bearing Cone	RW-104	1	368
28	Bearing Cone	RW-106	1	368A
29	Bearing Cup	RW-105	1	362A
30	Bearing Cup	RW-107	2	LM603014
31	Bearing Cone	RW-108	2	LM603049
32	Plug Pressure Relief	RW-502	1	KG 1/2 - 14NPTF
33	Pipe Plug - SQ. HD	RW-503	1	KG 1/8 - 27NPTF
34	Tag	RW-R0852	1	50*25



STD - PTO SHAFT



Series 4

Key No.	Description	Part No.
1	3 - Prong Lock Outer	K4101
2	Outer Tube Hard Core w/ Re-enforcement Ring	K4102
3	Metal Re-enforcement Ring	K4103
4	Standard Cone	K4104
5	Pin Stop Rotation	K4105
6	Outer Tube 910mm, 28" w/decal	K4106
6	Outer Tube 1210mm, 39" w/decal	K4107
7	Inner Tube 910mm, 28"	K4108
7	Inner Tube 1210mm, 39"	K4109
8	Inner Tube Hard Core w/ Re-enforcement Ring	K4110
9	3 - Prong Lock Inner	K4111
10	Chain	K4112
11	Danger Decal	K4113
12	Short Cone	K4114
13	Long Cone	K4115

Please call Kodiak Parts Dept. before ordering PTO parts at 423-336-2390.

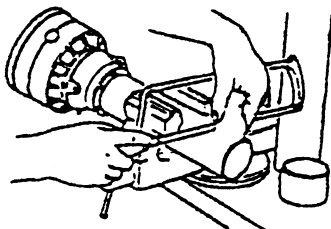
K-36725 [90SL4069] 910mm:
Complete Shield Series 4 – 40" and 48" STD Cutter

K-36728 [90SL4099] 1210mm:
Complete Shield Series 4 – 60" and 72" STD Cutter

LONG CONE USED ONLY ON SHEAR PIN / SP LINED YOKES (TRACTOR OR IMPLEMENT END).

ADD TO ABOVE K-4114 SHORT CONE:
Add price for complete shaft.
Shield with 1 STD Cone / 1 short cone - for slip clutch driveline.

ADD TO ABOVE K-4115 LONG CONE:
Add price for complete shaft.
Shield with 2 long cones - for splined yoke both ends.



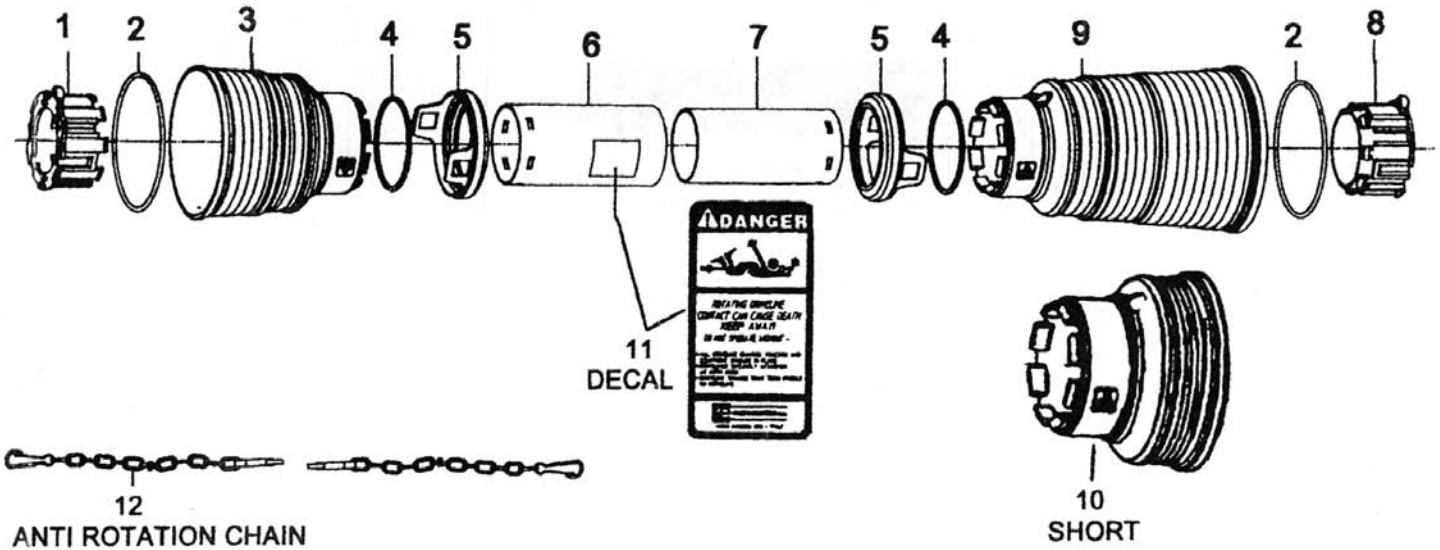
***NOTE: SHIELDS ARE FOR UP TO 910MM AND 1210MM X-X DRIVE LINES...CUT TUBES TO FIT

ASSEMBLE THE SHIELDS ON EACH HALF, THEN CUT THE TUBES THE SAME LENGTH AS THE SLIP TUBES. MAKE SURE THEY DO NOT COME TOGETHER AND BIND WHEN THE 2 HALVES ARE ASSEMBLED.

ALWAYS KEEP SHIELDING IN PROPER WORKING ORDER, USE PROPER LENGTH CONES, AND MAKE CERTAIN ALL SHIELDING FURNISHED WITH EQUIPMENT OR DRIVE LINE IS IN PLACE AND THAT THE CROSSES AND YOKES ARE COMPLETELY COVERED BY EITHER THE INSTALLED SHIELD OR EQUIPMENT. IT IS THE USER'S RESPONSIBILITY TO USE CORRECT SHIELDING.



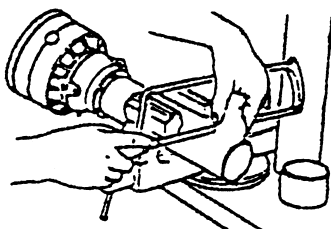
HD - PTO SHAFT



Series 5 - 6 - 7

Key No.	Description	Series	Part No.
1	Outer Tube Bearing	5	K5101
1	Outer Tube Bearing	6	K6101
2	Stiffner Bar	5-6	K5102
3	Standard Cone	5-6	K5103
4	Stop Snag Ring	5-6	K5104
5	Safety Sleeve	5-6	K5105
6	Outer Tube 910mm, 26" w/decals	5-6	K5106
6	Outer Tube 1210mm, 38" w/decals	5-6	K5107
7	Inner Tube 910mm, 26"	5-6	K5108
7	Inner Tube 1210mm, 38"	5-6	K5109
8	Inner Tube Bearing	5	K5110
8	Inner Tube Bearing	6	K6110
9	Long Cone	5-6	K5111
10	Short Cone	5-6	K5112
11	Danger Decal	5-6	K5113
12	Chain	5-6	K5114

**Please call Kodiak Parts Dept.
at 423-336-2390 BEFORE
ordering PTO parts.**



***NOTE: SHIELDS ARE FOR UP TO 910MM AND 1210MM X-X DRIVE LINES...CUT TUBES TO FIT

ASSEMBLE THE SHIELDS ON EACH HALF, THEN CUT THE TUBES THE SAME LENGTH AS THE SLIP TUBES. MAKE SURE THEY DO NOT COME TOGETHER AND BIND WHEN THE 2 HALVES ARE ASSEMBLED.

ALWAYS KEEP SHIELDING IN PROPER WORKING ORDER, USE PROPER LENGTH CONES, AND MAKE CERTAIN ALL SHIELDING FURNISHED WITH EQUIPMENT OR DRIVE LINE IS IN PLACE AND THAT THE CROSSES AND YOKES ARE COMPLETELY COVERED BY EITHER THE INSTALLED SHIELD OR EQUIPMENT. IT IS THE USER'S RESPONSIBILITY TO USE CORRECT SHIELDING.

PTO SHAFT COVERS



**PLEASE LOOK AT THE COVER FOR ANY MARKING,
SO THE CORRECT COVER WILL BE SENT TO YOU.**

40", 4', AND 5' STANDARD 3 POINT HITCH CUTTER PTO COVER
PART NUMBER CPC-5

6' STANDARD 3 POINT HITCH CUTTER PTO COVER
PART NUMBER CPC-6

7' SERIES 6 PTO COVER
PART NUMBER K-39589

FOR HEAVY DUTY PTO SERIES 5 PTO COVER
PART NUMBER IS CPCHD-5

LONG CONE USED
ONLY ON
SHEAR PIN/
SP LINED YOKES
(TRACTOR OR
IMPLEMENT END).

K-36725 [90SL4069] 910mm:
Complete Shield Series 4 – 40" and 48" STD Cutter

K-36728 [90SL4099] 1210mm:
Complete Shield Series 4 – 60" and 72" STD Cutter

**ADD TO ABOVE K-4114 SHORT CONE: Add price for complete shaft.
Shield with 1 STD Cone / 1 short cone - for slip clutch driveline.**

**ADD TO ABOVE K-4115 LONG CONE: Add price for complete shaft.
Shield with 2 long cones - for splined yoke both ends.**

Complete PTO's

STANDARD 3 POINT HITCH PTO

40" SERIES #4 PART NUMBER	109-40
4' SERIES #4 PART NUMBER	111-60
5' SERIES #4 PART NUMBER	111-60
6' SERIES #4 PART NUMBER	112-72
SLIP CLUTCH STANDARD PTO	
6" SERIES #4 PART NUMBER	113-72SC

MEDIUM DUTY 3 POINT HITCH PTO

5' SERIES #4 PART NUMBER	111-60
6' SERIES #4 PART NUMBER	112-72
SLIP CLUTCH MEDIUM DUTY	
5' SERIES #4 PART NUMBER	113-72SC
6' SERIES #4 PART NUMBER	113-72SC

HEAVY DUTY 3 POINT PTO

5' SERIES #5 PART NUMBER	111-60SC
6' SERIES #5 PART NUMBER	113-72H
7' SERIES #6 PART NUMBER	113-84H
8' SERIES #5 PART NUMBER	111-60SC
10' SERIES #5 PART NUMBER	111-60SC

PULL TYPE

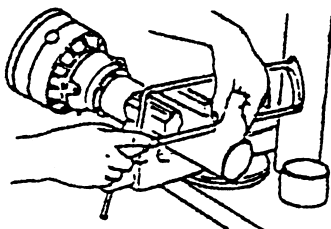
40" SERIES #4 PART NUMBER	111-60
4' SERIES #4 PART NUMBER	111-60
5' SERIES #4 PART NUMBER	112-72
6' SERIES #4 PART NUMBER	113-72 H-P

MEDIUM DUTY PULL

5' SERIES #4 PART NUMBER	112-72
5' SERIES #4 PART NUMBER	113-72SC
6' SERIES #4 PART NUMBER	113-72

HEAVY DUTY PULL

6' SERIES #5 PART NUMBER	113-72 H
7' SERIES #6 PART NUMBER	113-84 H



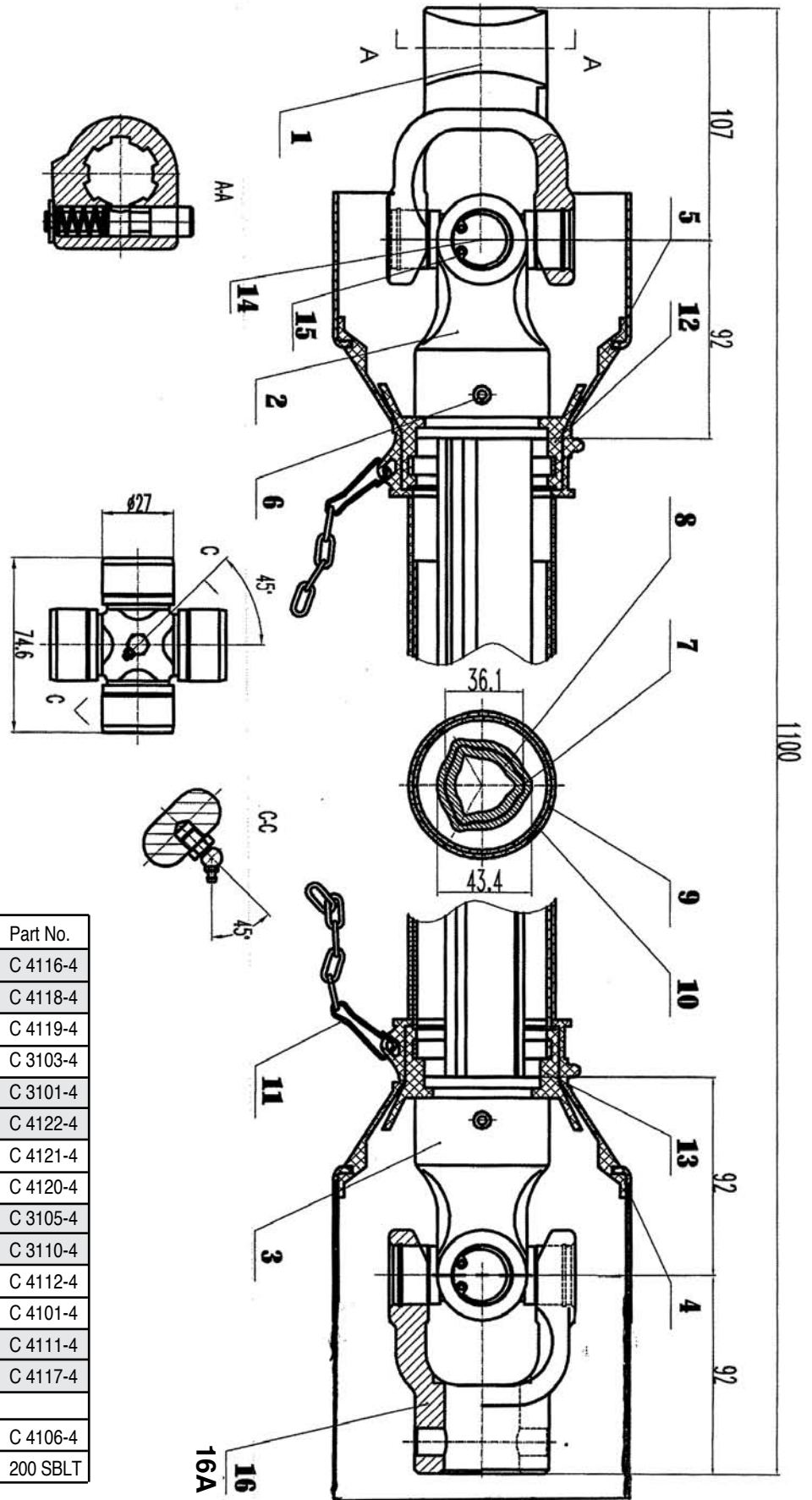
***NOTE: SHIELDS ARE FOR UP TO 910MM AND 1210MM X-X DRIVE LINES...CUT TUBES TO FIT

**ASSEMBLE THE SHIELDS ON EACH HALF, THEN CUT THE TUBES THE SAME LENGTH AS THE
SLIP TUBES. MAKE SURE THEY DO NOT COME TOGETHER AND BIND WHEN THE 2 HALVES
ARE ASSEMBLED.**

*ALWAYS KEEP SHIELDING IN PROPER WORKING ORDER, USE PROPER LENGTH CONES, AND
MAKE CERTAIN ALL SHIELDING FURNISHED WITH EQUIPMENT OR DRIVE LINE IS IN PLACE
AND THAT THE CROSSES AND YOKES ARE COMPLETELY COVERED BY EITHER THE INSTALLED
SHIELD OR EQUIPMENT. IT IS THE USER'S RESPONSIBILITY TO USE CORRECT SHIELDING.*

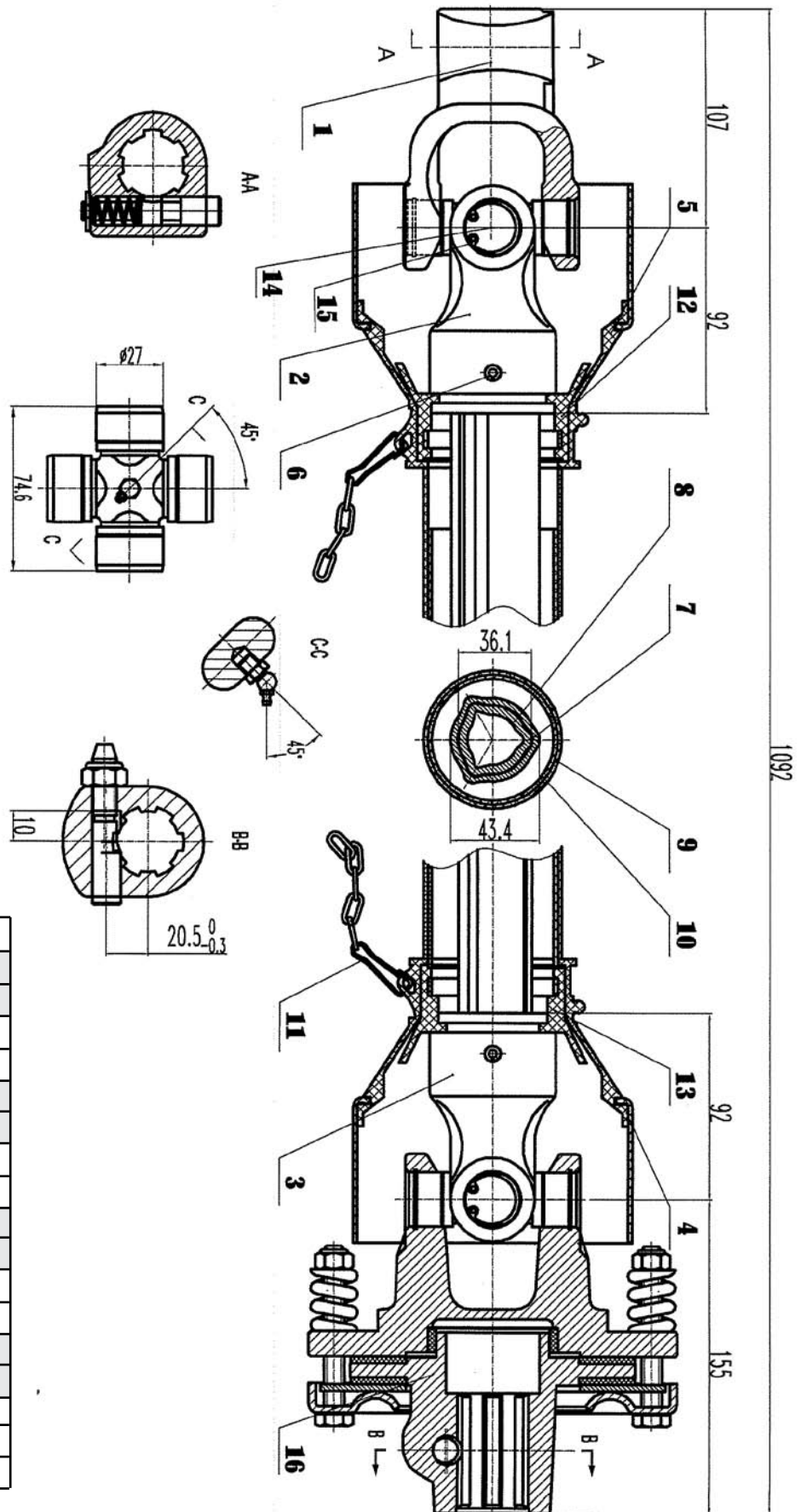


STD - SERIES 4 PTO PARTS



No.	Description	Part No.
1	4# 1 3/8 6S Yoke Tractor End	C 4116-4
2	4# Male Profile Yoke	C 4118-4
3	4# Female Profile Yoke	C 4119-4
4	4# Small Plastic Cone	C 3103-4
5	4# Tractor End Plastic Cover	C 3101-4
6	Roll Pin	C 4122-4
7	4# Male Tubing	C 4121-4
8	4# Female Tubing	C 4120-4
9	4# Plastic Shield	C 3105-4
10	4# Male Plastic Tubing	C 3110-4
11	Chain	C 4112-4
12	4# Outer Lock	C 4101-4
13	4# Inner Lock	C 4111-4
14	4# Bearing/Universal/Cross Kit	C 4117-4
15	N/A	
16	Implement Smooth Yoke	C 4106-4
16A	1/2"x 3" Gr.2 Shearbolt/nut	200 SBLT

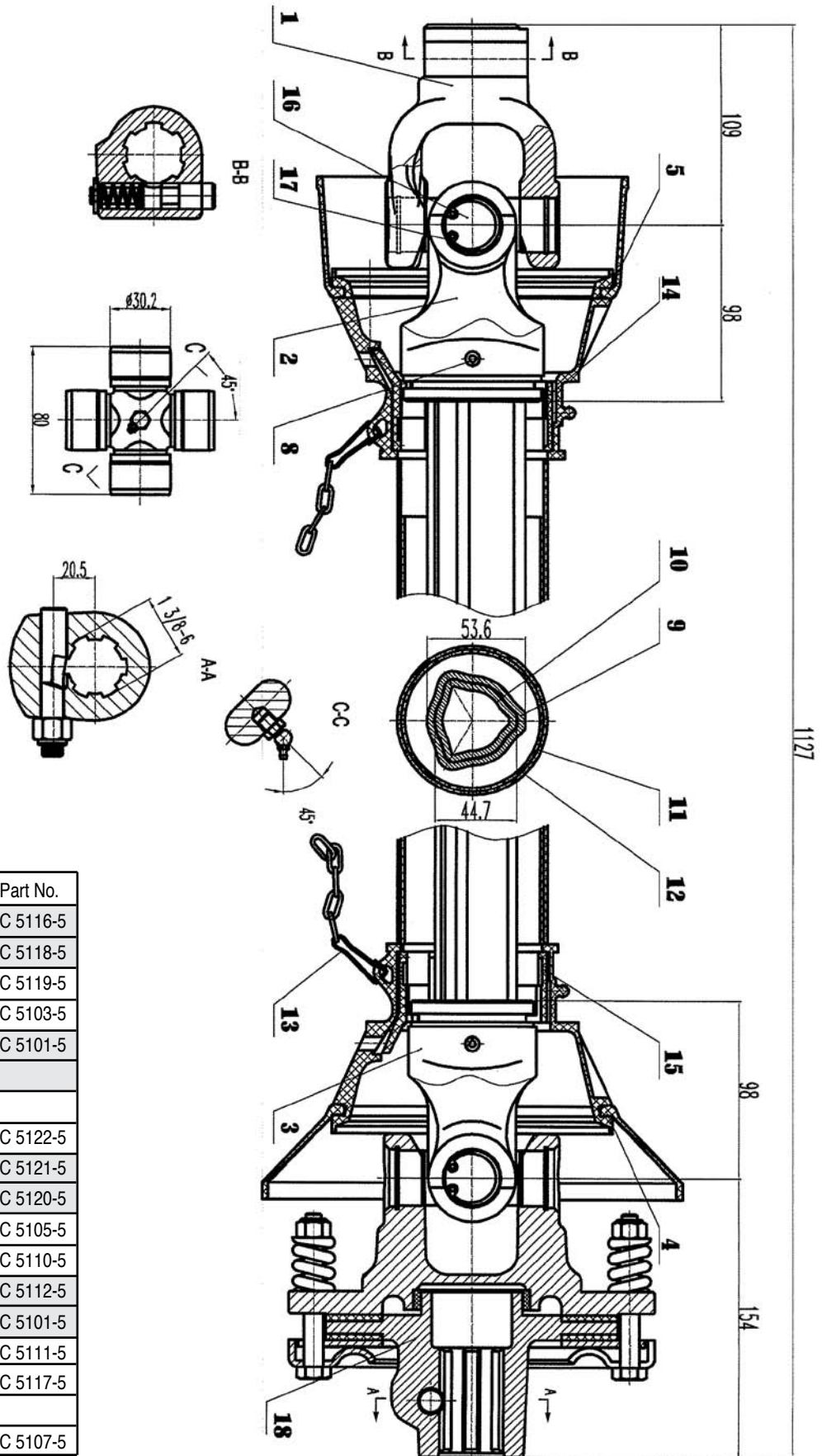
STD or MD - SERIES 4 S/C PTO PARTS



No.	Description	Part No.
1	4# 1 3/8 6S Yoke Tractor End	C 4116-4
2	4# Male Profile Yoke	C 4118-4
3	4# Female Profile Yoke	C 4119-4
4	4# Small Plastic Cone	C 3103-4
5	4# Tractor End Plastic Cover	C 3101-4
6	Roll Pin	C 4122-4
7	4# Male Tubing	C 4121-4
8	4# Female Tubing	C 4120-4
9	4# Plastic Shield	C 3105-4
10	4# Male Plastic Tubing	C 3110-4
11	Chain	C 4112-4
12	4# Outer Lock	C 4101-4
13	4# Inner Lock	C 4111-4
14	4# Bearing/Universal/Cross Kit	C 4117-4
15	N/A	
16	4# Slip Clutch 1 3/8 6 Spline	C 4107-4



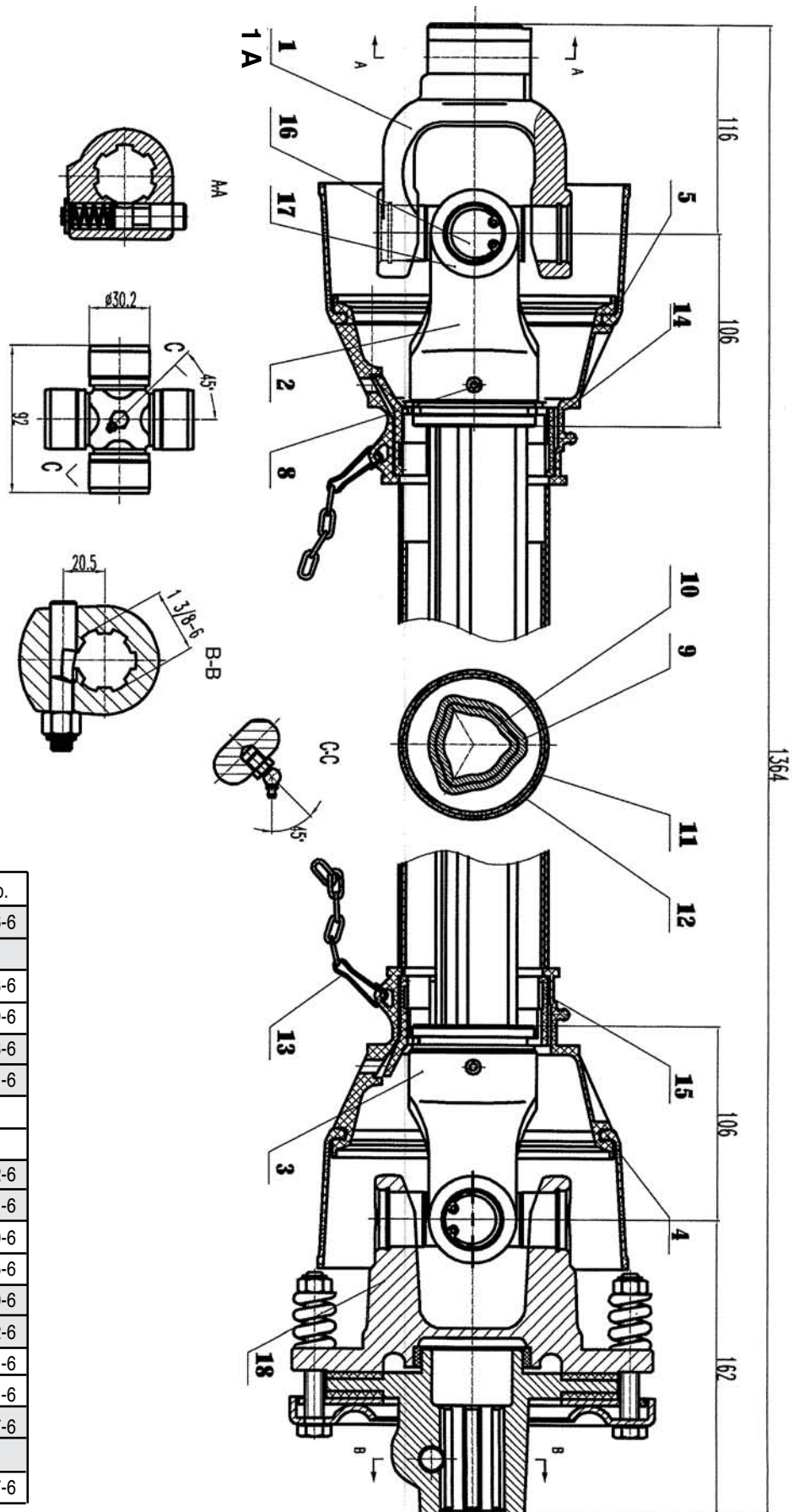
6' HD - SERIES 5 S/C PTO PARTS



No.	Description	Part No.
1	5# 1 3/8 6S Yoke Tractor End	C 5116-5
2	5# Male Profile Yoke	C 5118-5
3	5# Female Profile Yoke	C 5119-5
4	5# Small Plastic Cone	C 5103-5
5	5# Tractor End Plastic Cover	C 5101-5
6		
7		
8	Roll Pin	C 5122-5
9	5# Male Tubing	C 5121-5
10	5# Female Tubing	C 5120-5
11	5# Plastic Outside Shield	C 5105-5
12	5# Plastic Inside Tubing	C 5110-5
13	Chain	C 5112-5
14	5# Outer Lock	C 5101-5
15	5# Inner Lock	C 5111-5
16	5# Bearing/Universal/Cross Kit	C 5117-5
17	N/A	
18	5# 1 3/8 Slip Clutch 6 Spline	C 5107-5

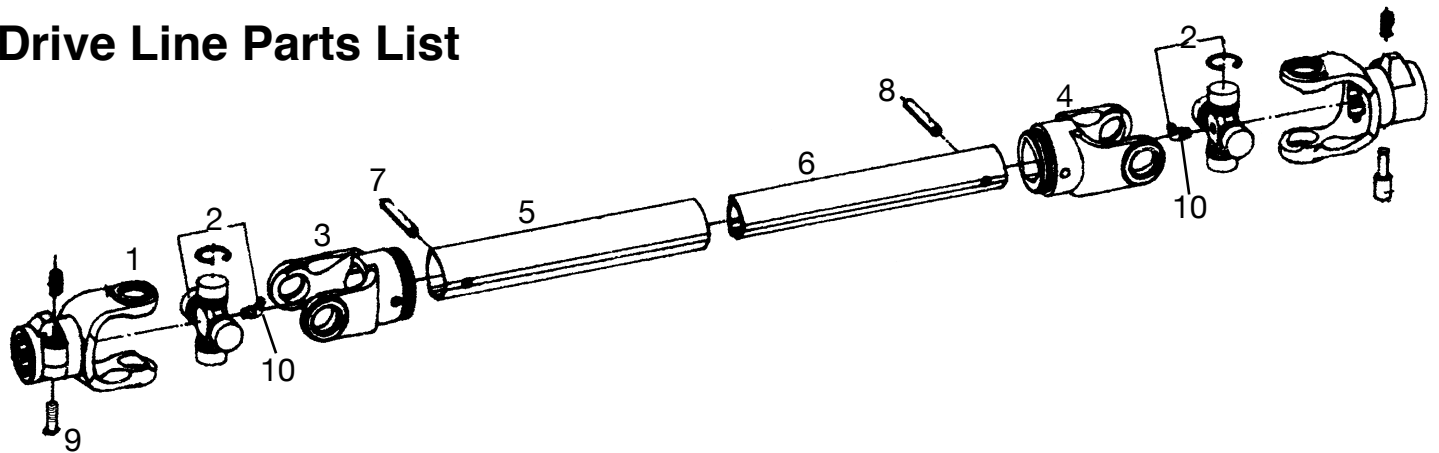
7' HD - SERIES 6 S/C PTO PARTS

No.	Description	Part No.
1	6# 1 3/8 6S Yoke Tractor End	C 6116-6
1A	6# 1 3/4 20S for 1,000 RPM	
2	6# Male Profile Yoke	C 6118-6
3	6# Female Profile Yoke	C 6119-6
4	6# Small Plastic Cone	C 6103-6
5	6# Tractor End Plastic Cover	C 6101-6
6		
7		
8	Roll Pin	C 6122-6
9	6# Male Tubing	C 6121-6
10	6# Female Tubing	C 6120-6
11	6# Plastic Outside Tubing	C 6105-6
12	6# Plastic Inside Tubing	C 6110-6
13	Chain	C 6112-6
14	6# Outer Lock	C 6101-6
15	6# Inner Lock	C 6111-6
16	6# Bearing/Universal/Cross Kit	C 6117-6
17	N/A	
18	6# 1 3/8 Slip Clutch 6 Spline	C 6107-6





Drive Line Parts List



		Series #	Price	Part #
1	1 3/8 - 6 Spline Yoke	4		K4116
1	1 3/8 - 6 Spline Yoke	5		K5116
1	1 3/8 - 6 Spline Yoke	6		K6116
2	Cross Bearing Kit	4		K4117
2	Cross Bearing Kit	5		K5117
2	Cross Bearing Kit	6		K6117
3	External Tube Yoke	4		K4118
3	External Tube Yoke	5		K5118
3	External Tube Yoke	6		K6118
4	Internal Tube Yoke	4		K4119
4	Internal Tube Yoke	5		K5119
4	Internal Tube Yoke	6		K6119
5	External Tube With Decal	4		K4120
5	External Tube With Decal	5		K5120
5	External Tube With Decal	6		K6120
6	Internal Tube	4		K4121
6	Internal Tube	5 & 6		K5121
7	External Tube Roll Pin	4		K4122
7	External Tube Roll Pin	5		K5122
7	External Tube Roll Pin	6		K6122
8	Internal Tube Roll Pin	4		K4123
8	Internal Tube Roll Pin	5		K5123
8	Internal Tube Roll Pin	6		K6123
9	1/2" x 3" Grade 2 Shearbolt	all		200 SBLT
9A	1 3/8 Quick Disconnect Pin	all		K4125
10	Grease Fitting 45 degree	all		K4126

KODIAK

ROTARY CUTTERS

LIMITED WARRANTY

KODIAK MFG., INC. (the "Manufacturer") warrants, only to the original Purchaser, this equipment will be free from defects in material and workmanship, under normal use and service, for one (1) year from date of purchase providing this equipment is purchased for individual use only. **Commercial use of this equipment is not covered under any warranty.** This warranty does not apply to any equipment which has been damaged or which has been subjected to change, misuse, negligence, abnormal wear and tear, alterations, tampering, or failure to follow operating instructions. This warranty does not cover any product or parts not manufactured by Kodiak Mfg., Inc.

A five (5) year Limited Warranty* on gearbox components provided they have been properly maintained and have not been subjected to abuse or misuse except as limited below.**

***Gearbox Warranty limitations:**

- i. Warranty is one (1) year for seals unless seals are damaged from debris wrapped around output shaft of gearbox. After one year, seals are considered to be wearing parts, and the replacement is the owner's responsibility.
- ii. Gearboxes that are subject to warranty may be replaced with new or rebuilt gearboxes at the discretion of Kodiak Mfg., Inc.
- iii. **Shearbolts must be approved Grade 2, 1/2" x 3" shearbolts.**

**** NOTE: "properly maintained" specifically includes, but is not limited to:**

- i. Running gearboxes with the proper amount of the correct lubricant.
- ii. Adjusting slip clutches correctly to provide proper protection for gearbox components and drive line.

Under this warranty, the Manufacturer will repair or replace any part which the Manufacturer determines has failed during the period of the warranty due to defects in material or workmanship. After written approval by the manufacturer, the equipment or defective part must be returned to Kodiak Mfg., Inc.

Warranty coverage and performance is expressly conditioned upon the return of the completed registration form to KODIAK MFG., INC., 8849 CANDIES CREEK RIDGE ROAD NW, CHARLESTON, TENNESSEE 37310

Kodiak Mfg., Inc. reserves the right to make improvements and changes in specifications without notice or obligation to modify previously sold units.

The Owner's Manual describes the proper assembly procedures for your implement and furnishes operating and maintenance recommendations to help you obtain long and satisfactory service.

PURCHASER'S EXCLUSIVE REMEDY FOR BREACH OF WARRANTY, OTHER DEFECT, OR CONDUCT GIVING RISE TO LIABILITY SHALL BE THE REPAIR OR REPLACEMENT OF THE PRODUCT SOLD, AND THE MANUFACTURER UNDER NO CIRCUMSTANCES SHALL BE LIABLE FOR ECONOMIC LOSS OR INCIDENTAL OR CONSEQUENTIAL DAMAGES. THE MANUFACTURER DISCLAIMS ALL IMPLIED WARRANTIES, INCLUDING THE WARRANTY OF MERCHANTABILITY AND FITNESS FOR PURPOSE.

Purchaser and Kodiak Mfg., Inc. hereby (a) submit to the non-exclusive jurisdiction of the courts of competent jurisdiction in Bradley County, Tennessee, and the United State District Court for the Eastern District of Tennessee for resolution of any dispute concerning this Limited Warranty or the rights or obligations of Purchaser and/or Kodiak Mfg., Inc.; (b) agree that any litigation commenced in Tennessee in connection with this Limited Warranty shall be venued in either the Bradley County, Tennessee District Court, or the United States District Court, Eastern District of Tennessee, Southern Division, and (c) waive any objection it may have as to any such action or proceeding brought in such court that such court is an inconvenient forum. Nothing herein shall limit the right of Purchaser or Kodiak Mfg., Inc. (or the right of any permitted successor or assign of either) to bring proceedings against the other in the courts of any other jurisdiction wherein any assets of such other party may be located.

KODIAK

ROTARY CUTTERS

PRODUCT REGISTRATION

THIS REGISTRATION FORM MUST BE ON FILE WITH KODIAK MFG., INC. WITHIN **30 DAYS** OF DELIVERY TO PURCHASER, OR WARRANTY CLAIM WILL NOT BE HONORED.

PLEASE RETURN COMPLETED FORM BY E-MAIL, FAX, OR MAIL:

E-MAIL: INFO@KODIAKMFG.COM

FAX: 423-336-8805

MAIL: 8849 CANDIES CREEK RIDGE ROAD NW, CHARLESTON, TN 37310

MODEL: _____ SERIAL #: _____ DELIVERY DATE: _____

TRACTOR MAKE & MODEL BEING USED WITH ABOVE UNIT: _____

PURCHASER'S NAME: _____

ADDRESS: _____

CITY: _____ STATE: _____ ZIP: _____

SELLING DEALER'S NAME: _____

CITY: _____ STATE: _____ ZIP: _____

I have read all warranties and agree with these conditions. I agree to read and obey all safety instructions outlined in this manual before operating this rotary cutter.

PURCHASER'S SIGNATURE: _____

KODIAK **ROTARY CUTTERS**



KODIAK MFG., INC.

8849 Candies Creek Ridge Road NW • Charleston, TN 37310 • (423) 336-2390 • Fax (423) 336-8805
info@kodiakmfg.com • www.kodiakmfg.com For replacement manuals call (423) 336-2390