

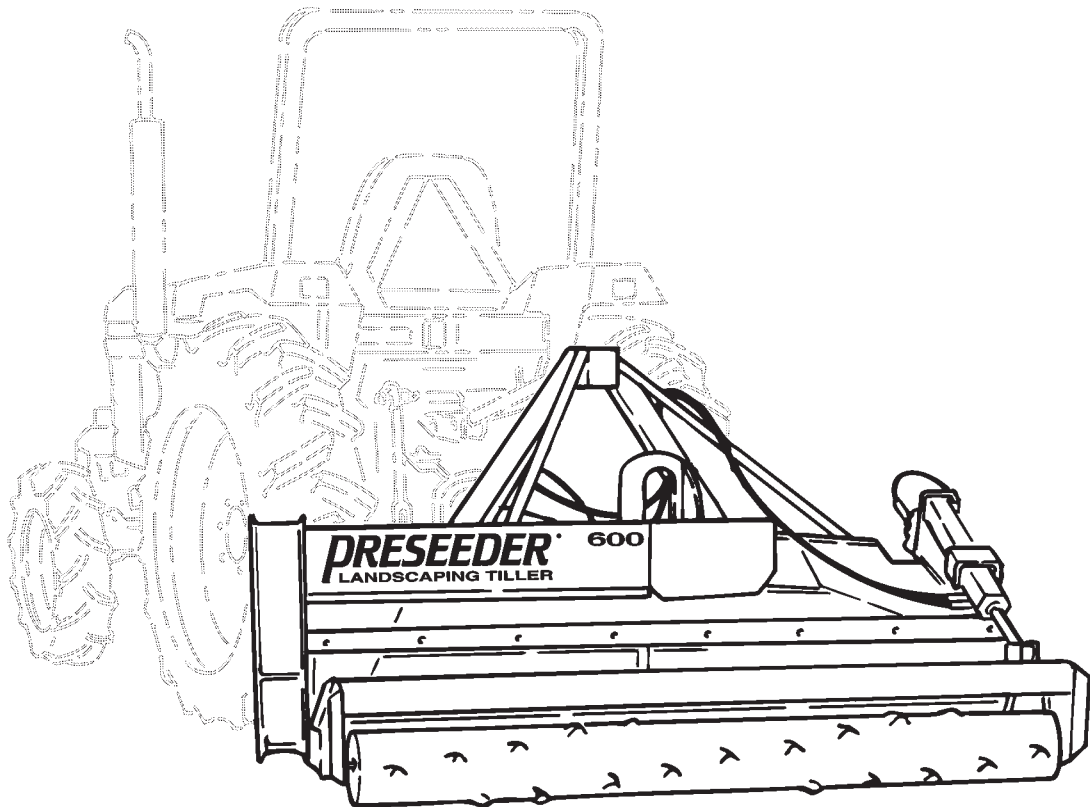
PRESEEDER[®]

LANDSCAPING TILLER

PARTS MANUAL

FOR

MODELS 600, 600A & 800



ATI 
CORPORATION

New Holland, PA 17557
Phone (717) 354-8721 • FAX (717) 354-2162
1-800-342-0905
www.preseeder.com

AUGUST 2003
CAT.# PS600/600A/800PM-0803

COPYRIGHT 2003 by
ATI Corporation
New Holland, PA 17557 U.S.A.

All rights reserved. No part of this publication may be reproduced, stored in a retrieval system, or transmitted in any form or by any means, electronic, mechanical, photocopying, recording, or otherwise, without prior written permission of ATI Corporation.

DISCLAIMER

THE INFORMATION IN THIS MANUAL IS PROVIDED TO PROMOTE THE SAFE USE OF, AND ASSIST THE OPERATOR IN ACHIEVING THE BEST PERFORMANCE FROM, MODELS 600 and 800 Preseeder® Landscaping Tillers DESCRIBED HEREIN, FOR THEIR INTENDED APPLICATIONS.

Preseeder® is a registered trademark of ATI Corporation.

Preseeder tiller Models 600, 600A & 800 PARTS LIST

TABLE OF CONTENTS



New Holland, PA 17557
Phone (717) 354-8721 • FAX (717) 354-2162
1-800-342-0905
www.preseeder.com

SUBJECT	PAGE NO.
WARRANTY	iv
SERIAL NUMBER INFORMATION	iv
WHERE TO GET PARTS AND SERVICE	iv
HOW TO ORDER PARTS	v
LIST OF PARTS ILLUSTRATIONS	1



New Holland, PA 17557
 Phone (717) 354-8721 • FAX (717) 354-2162
 1-800-342-0905
 www.preseeder.com

Preseeder tiller Models 600, 600A & 800 PARTS LIST

WARRANTY, SERIAL NUMBERS, PARTS & SERVICE

WARRANTY

This Preseeder tiller is designed and manufactured to high quality standards. ATI Corporation, therefore, guarantees this tiller to be free from defect in workmanship and materials for one year from purchase date. **If the machine is used for rental purposes, the warranty is limited to ninety (90) days.**

Rotor teeth and normal wear are not covered by this warranty.

Misuse, abuse, misapplication, and unauthorized alterations will void this warranty.

SERIAL NUMBER INFORMATION

It is very important that the correct serial number is provided when ordering parts. The serial number plate is located on the front right (non-drive end) corner of the main frame. Earlier units utilized a seven-digit alpha-numerical code, while newer models now use a four digit numeric-only. For instance, a unit with serial number E59893W was built before the unit with serial number 1000. Please mark the model and serial number of your Preseeder in the space provided below in case the plate on your preseeder gets lost or damaged.

Model **Serial Number**

Dealer Name **Dealer Phone Number**

WHERE TO GET PARTS AND SERVICE

When replacement parts and service are required for your Preseeder Tiller, ATI Corporation recommends returning to the dealer from which the machine was purchased. By going to the dealer, you are dealing with people that understand and know your machine. Our dealers have the experience servicing these machines and stock the most common parts required to keep your Preseeder in top working condition.

NOTE:

ATI Corporation reserves the right to discontinue models at any time, change specifications, and improve design without notice and without incurring obligation on goods previously purchased and to discontinue supplying any part listed, when the demand does not warrant production.

Preseeder tiller Models 600, 600A & 800 PARTS LIST

HOW TO ORDER PARTS



New Holland, PA 17557
Phone (717) 354-8721 • FAX (717) 354-2162
1-800-342-0905
www.preseeder.com

Parts lists contained in this book have been prepared to help you when ordering spare and/or replacement parts. Your order will be filled promptly and accurately when the following information is provided:

1. Model and serial number of the unit. (This specifically identifies the equipment you have and permits us to verify the part numbers in your order.)
2. The parts list page number and catalog number. Include catalog revision number, if applicable.
3. The **Item** number for each part. **Item** numbers on the parts list page correspond with the numbers shown on the illustration.
4. **Part Number** as it appears in the parts list. In most cases this will be a nine-digit number; for example: 200-147-000.
5. The **Description** for the part as it appears on the parts list page.

When a complete assembly is needed, use the assembly number given in the parts list. If no assembly number is given, order by main assembly title and list only the item numbers you want. For example: "PTO Shaft Assembly per 000-176-025, Items 6 through 12, inclusive".

The part ordered may have a new part number, or the part may have been replaced by a newer design with a different part number. In these cases your acknowledgement, shipping papers and invoices will be written listing the current part number first; the old part number you referred to will follow the part description.

Our purpose in doing this is to tell you that the parts are fully interchangeable. This will avoid any unnecessary correspondence or delay in processing your order. We suggest that you add any new number to your parts lists for future use.

Preseeder tiller Models 600, 600A & 800 PARTS LIST



New Holland, PA 17557
Phone (717) 354-8721 • FAX (717) 354-2162
1-800-342-0905
www.preseeder.com

LIST OF PARTS ILLUSTRATIONS

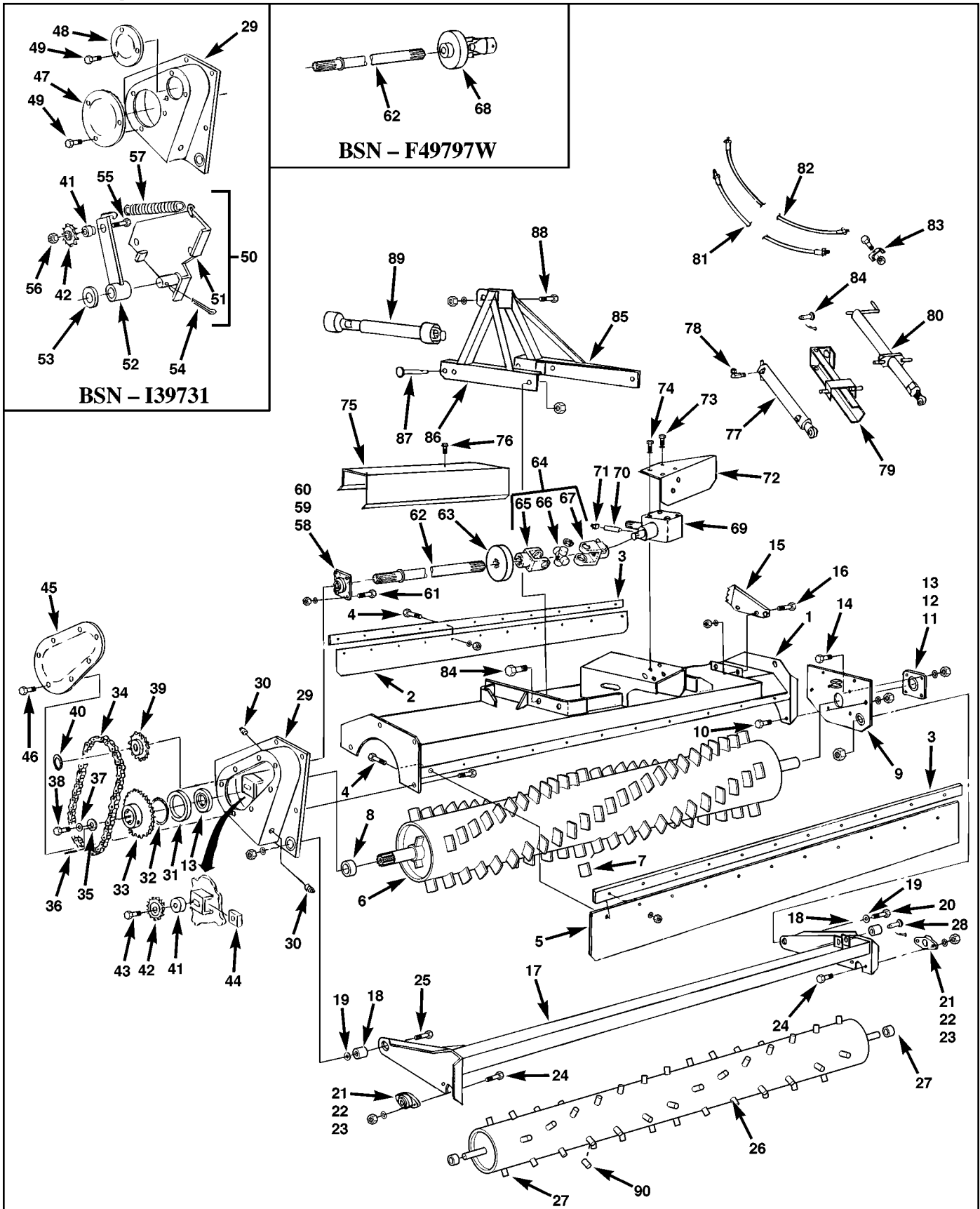
Figure 1. Preseeder Assembly	2
Figure 2. PTO Shaft Assembly BSN-F49797W	8
Figure 3. Friction Clutch Assembly BSN-F49797W	10
Figure 4. PTO Shaft Assembly ASN-49796	12
Figure 5. Friction Clutch Assembly ASN-49796	14
Figure 6. Decals.	16



New Holland, PA 17557
Phone (717) 354-8721 • FAX (717) 354-2162
1-800-342-0905
www.preseeder.com

Preseeder tiller Models 600, 600A & 800 PARTS LIST

Figure 1. Preseeder Assembly



Preseeder tiller Models 600, 600A & 800 PARTS LIST



New Holland, PA 17557
Phone (717) 354-8721 • FAX (717) 354-2162
1-800-342-0905
www.preseeder.com

Figure 1. Preseeder Assembly

Item	Part No.	Qty	Description
1	200-182-000	1	Frame, Main (Model 600) BSN-F29631
	200-100-000	1	Frame, Main (Model 600A) ASN-F29630
	200-125-000	1	Frame, Main (Model 800)
2	200-118-000	1	Shield, Rock, Front (Model 600)
	200-124-000	1	Shield, Rock, Front (Model 800)
3	200-117-000	2	Strip, Clamp, Shields (Model 600)
	200-123-000	2	Strip, Clamp, Shields (Model 800)
4	LP	AR	Capscrew, 1/4"-20UNC x 1" Long, With Nut, Flanged Hex
5	200-121-000	1	Shield, Dust, Rear (Model 600)
	200-128-000	1	Shield, Dust, Rear (Model 800)
6	200-122-000	1	Rotor (Model 600)
	200-129-000	1	Rotor (Model 800)
7	200-114-000	AR	Tooth, Rotor, Chamfered (Replacement)
8	200-166-000	1	Bushing, Rotor Shaft 1-3/4" Dia. x 5/8" Long
9	200-112-000	1	End Plate, Right Hand
10	LP	AR	Capscrew, 1/2"-13UNC x 1-1/4" Long, With Lockwasher and Nut
11	000-176-011	1	Bearing, Rotor Shaft, Includes Items 12 and 13
12	000-176-012	1	Flange only
13	000-176-013	1	Bearing Insert only
14	LP	AR	Capscrew, 9/16"-12UNC x 1-1/2" Long, With Lockwasher and Nut
15	200-111-000	1	Indicator, Depth
16	LP	AR	Capscrew, 7/16"-14UNC x 1" Long, With Lockwasher and Nut
17	200-119-000	1	Frame, Roller (Model 600) BSN-1000
	200-193-000	1	Frame, Roller (Model 600) ASN----999
	200-126-000	1	Frame, Roller (Model 800) BSN-1000
	200-196-000	1	Frame, Roller (Model 800) ASN----999
	200-199-000	2	Bushing, Roller Frame
19	LP	AR	Washer, Flat, 3/4" SAE
20	LP	AR	Capscrew, 3/4"-16UNC x 1-3/4" Long
21	000-176-020	2	Bearing, 1" Roller Shaft, Includes Items 22 and 23, BSN-1000
	000-176-121	2	Bearing, 1-1/4" Roller Shaft, Includes Items 22 and 23, ASN----999
22	000-176-021	2	Flange Only, BSN-1000
	000-176-122	2	Flange Only, ASN----999
23	000-176-022	2	Bearing, Insert Only, 1", BSN-1000
	000-176-117	2	Bearing, Insert Only, 1-1/4", ASN----999
24	LP	AR	Capscrew, 7/16"-14UNC x 1-1/4" Long, With Lockwasher and Nut, BSN-1000
	LP	AR	Capscrew, 1/2"-13UNC x 1-1/2" Long, With Lockwasher and Nut, ASN----999
25	LP	AR	Capscrew, 3/4"-10UNC x 2-3/4" Long, With Lock Nut
26	200-120-000	1	Roller, Rear (Model 600) BSN-1000
	200-144-000	1	Roller, Rear (Model 600) ASN----999
	200-127-000	1	Roller, Rear (Model 800) BSN-1000
	200-217-000	1	Roller, Rear (Model 800) ASN----999
	200-177-000	2	Bushing, Roller Shaft 1-1/16" x 1", BSN-1000
27	200-197-000	2	Bushing, Roller Shaft, ASN----999
	000-161-005	1	Pin, Clevis with Cotter Pin, Hydraulic Cylinder
28	200-194-000	1	End Plate, Chain Enclosure (Model 600) BSN-F29631
29	200-195-000	1	End Plate, Chain Enclosure (Models 600 & 800) BSN-I39731
	200-102-000	1	End Plate, Chain Enclosure (Models 600 & 800) ASN-I39730
30	200-166-001	2	Plug, Pipe 3/8"

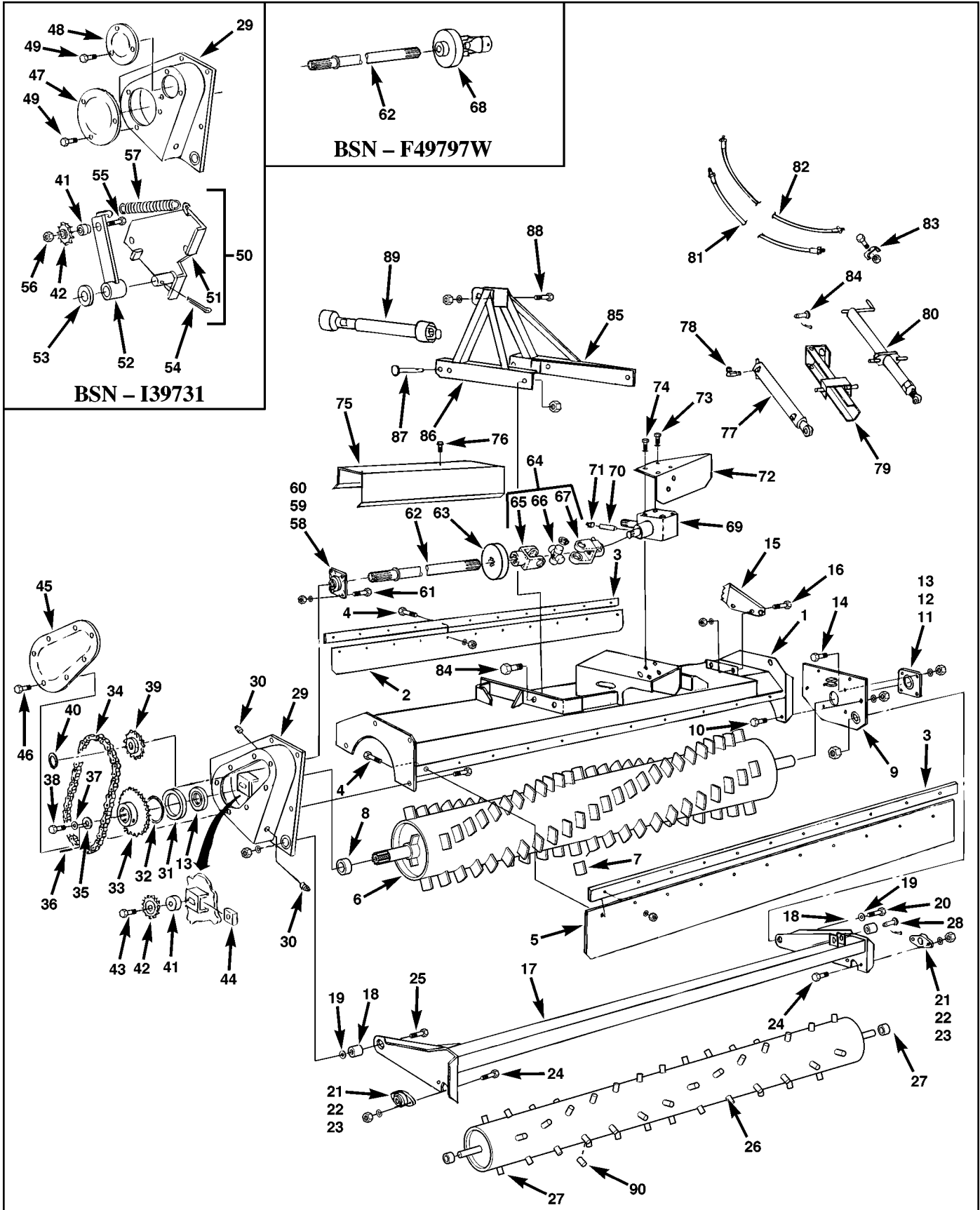
AR - As Required NSS - Not Serviced Separately ASN - After Serial No. BSN - Before Serial No. LP - Local Purchase



New Holland, PA 17557
 Phone (717) 354-8721 • FAX (717) 354-2162
 1-800-342-0905
 www.preseeder.com

Preseeder tiller Models 600, 600A & 800 PARTS LIST

Figure 1. Preseeder Assembly



Preseeder tiller Models 600, 600A & 800 PARTS LIST



New Holland, PA 17557
Phone (717) 354-8721 • FAX (717) 354-2162
1-800-342-0905
www.preseeder.com

Figure 1. Preseeder Assembly

Item	Part No.	Qty	Description
31	200-115-000	1	Retainer, Bearing
32	000-161-003	1	Ring, Retainer
33	000-176-017	1	Sprocket, Single 60, Rotor Shaft (Model 600) BSN-F29631
	000-176-092	1	Sprocket, Double 60, Rotor Shaft (Model 600) BSN-F29631
	000-176-016	1	Sprocket, Single 80H, Rotor Shaft (Models 600A ASN-F29630 & 800)
34	000-176-015	1	Chain, Single 60, Roller (Model 600) BSN-F29631
	000-176-094	1	Chain, Double 60, Roller (Model 600) BSN-F29631
	000-176-014	1	Chain, Single 80H, Roller (Models 600A ASN-F29630 & 800)
35	200-160-000	1	Washer, Retaining
36	000-161-004	1	Pin, Roll, 3/16" Dia. x 7/8" Long
37	200-161-000	1	Washer, Keeper
38	LP	AR	Capscrew, 1/2"-13UNC x 1" Long
39	000-176-018	1	Sprocket, Single 60, Drive Shaft (Model 600) BSN-F29631
	000-176-093	1	Sprocket, Double 60, Drive Shaft (Model 600) BSN-F29631
	000-176-010	1	Sprocket, Single 80H, Drive Shaft (Models 600A ASN-F29630 & 800)
40	000-161-002	1	Ring, Snap
41	200-162-000	1	Bushing, Idler (Model 600) ASN-F29630
	200-185-000	1	Bushing, Idler (Model 600) BSN-F29631
	200-162-000	1	Bushing, Idler (Model 800)
42	000-176-091	1	Sprocket, Idler (Model 600) BSN-F29631
	000-176-019	1	Sprocket, Idler (Models 600A ASN-F29630 & 800)
43	LP	1	Capscrew, 3/4"-16UNF x 2 " Long, ASN-I39730
44	200-163-000	1	Nut, Square, 3/4"-16UNF, ASN-I39730
45	200-103-000	1	Cover, Access, ASN-I39730
46	LP	AR	Capscrew, Flange Head, 5/16"-18UNC x 3/4" Long, With Nut Inserts
47	200-116-000	1	Cover, Access, Lower, BSN-I39731
48	200-184-000	1	Cover, Access, Upper, BSN-I39731
49	LP	AR	Capscrew, 3/8"-16UNC x 3/4" Long, With Nut Inserts
50	200-105-000	1	Sprocket Assembly, Idler, BSN-I39731 Includes Items 41, 42, 51 thru 57
51	200-106-000	1	Plate, Mounting (Model 600) BSN-F29631
	200-196-000	1	Plate, Mounting (Models 600A ASN-F29630 & 800)
52	200-107-000	1	Arm, Idler
53	LP	1	Washer, 3/4" SAE
54	LP	1	Pin, Cotter, 3/16" x 1-1/2" Long
55	LP	1	Capscrew, 5/8"-18UNF x 2-1/4" Long (Model 600) BSN-F29631
	LP	1	Capscrew, 3/4"-16UNF x 2-1/4" Long (Model 600A ASN-F29630 & 800)
56	LP	1	Nut, 5/8"-18UNF (Model 600) BSN-F29631
	LP	1	Nut, 3/4"-16UNF (Models 600A ASN-F29630 & 800)
57	000-161-010	1	Spring, Idler
58	000-176-007	1	Bearing Assembly, Drive Shaft, Includes Items 59 and 60
59	000-176-008	1	Flange Only
60	000-176-009	1	Bearing Insert Only
61	LP	AR	Capscrew, 1/2"-13UNC x 1-1/2" Long, With Lockwasher and Nut
62	200-168-000	1	Shaft, Drive, Splined (Model 600)
	200-169-000	1	Shaft, Drive, Splined (Model 800)
63	200-198-000	1	Damper, Vibration (Model 600) ASN-F49796

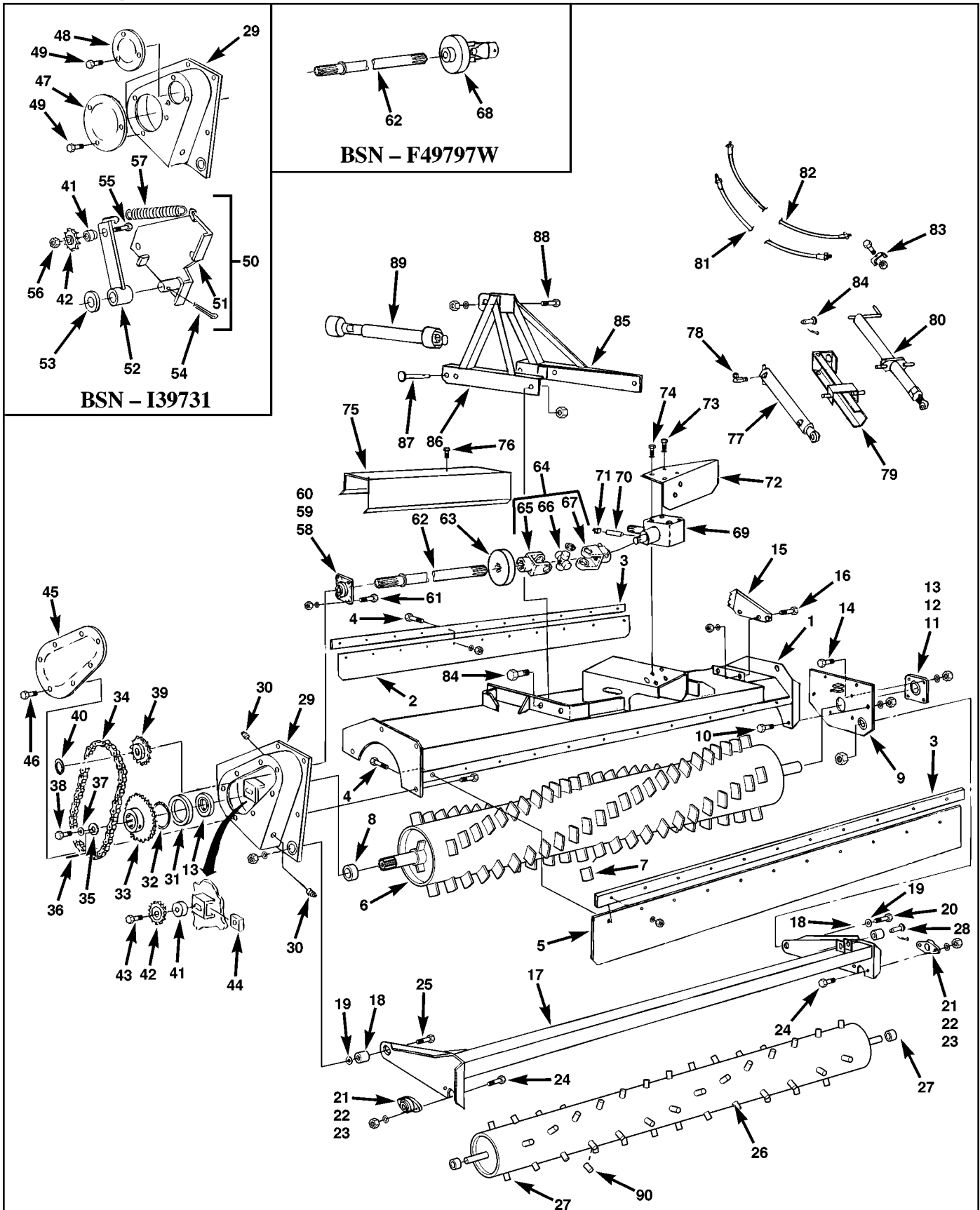
AR - As Required NSS - Not Serviced Separately ASN - After Serial No. BSN - Before Serial No. LP - Local Purchase



New Holland, PA 17557
Phone (717) 354-8721 • FAX (717) 354-2162
1-800-342-0905
www.preseeder.com

Preseeder tiller Models 600, 600A & 800 PARTS LIST

Figure 1. Preseeder Assembly



Preseeder tiller Models 600, 600A & 800 PARTS LIST



New Holland, PA 17557
Phone (717) 354-8721 • FAX (717) 354-2162
1-800-342-0905
www.preseeder.com

Figure 1. Preseeder Assembly

Item	Part No.	Qty	Description
64	000-176-003	1	Universal Joint Assembly ASN-F49796, Includes Items 65 thru 67
65	000-176-005	1	Yoke, Drive Shaft
66	000-176-006	1	Kit: Cross and Bearing, Retaining Rings, Lube Fitting
67	000-176-004	1	Yoke, Gearbox
68		1	Clutch Assembly, Friction, BSN-F49797W (See Figure 3 for Breakdown)
		1	Clutch Assembly, Friction, ASN-F49796 (See Figure 5 for Breakdown)
69	000-176-023	1	Gearbox (Model 600) BSN-F29631
	000-176-002	1	Gearbox (Models 600A ASN-F29630 & 800)
70	000-166-012	1	Tube, Oil Level, Gearbox (Model 600) BSN-F29631
71	000-166-013	1	Plug, Oil Level, Gearbox (Model 600) BSN-F29631
72	200-186-000	1	Shield, Gearbox (Model 600) BSN-F29631
	200-104-000	1	Shield, Gearbox (Models 600A ASN-F29630 & 800)
73	LP	AR	Capscrew, Hex Head, 12 mm x 31.75 x 30 mm Long, With Lockwasher
74	LP	AR	Capscrew, Hex Head, 12mm x 1.75 x 35 mm Long, With Lockwasher
75	200-187-000	1	Shield, Drive Shaft (Model 600) BSN-F29631
	200-101-000	1	Shield, Drive Shaft (Model 600A) ASN-F29630
	200-130-000	1	Shield, Drive Shaft (Model 800)
76	LP	AR	Capscrew, Flange Head, 7/16"-14UNC x 3/4" Long
77	000-166-010	1	Cylinder Assembly, Hydraulic
	000-166-019	AR	Kit, Cylinder Repair
78	000-166-008	1	Elbow, Swivel, With Orifice
79	200-110-000	1	Mount, Cylinder
80	200-167-000	1	Adjuster, Depth, Manual
81	000-166-014	1	Hose, Hydraulic, 1/4" x 110" Long (Model 600)
	000-166-015	1	Hose, Hydraulic 1/4" x 126" Long (Model 800)
82	000-166-016	1	Hose, Hydraulic, 1/4" x 80" Long (Model 600)
	000-166-017	1	Hose, Hydraulic, 1/4" x 96" Long (Model 800)
83	200-183-000	1	Clamp Hose, Capscrew, 5/16"-18UNC x 1-1/2" Long, & Locknut, Nylon, 5/16"-18UNC
84	000-161-011	1	Pin, Clevis, With Cotter Pin, Hydraulic Cylinder
85	200-108-000	1	Frame, 3-Point Hitch, Right Hand
86	200-109-000	1	Frame, 3-Point Hitch, Left Hand
87	000-161-001	2	Pin, Hitch, With Lynch Pin, Locking
88	LP	AR	Capscrew, 5/8"-11UNC x 3-1/2" Long, With Lockwasher and Nut
89	000-176-053	1	Shaft Assembly, PTO, BSN-F49797W (See Figure 2 for Breakdown)
	000-176-025	1	Shaft Assembly, PTO (Model 600) ASN-F49796 (See Figure 4 for Breakdown)
	000-176-120	1	Shaft Assembly, PTO (Model 800) ASN-F49796 (See Figure 4 for Breakdown)
90	200-190-001	AR	Pin, Rear Roller, Weld on Replacement

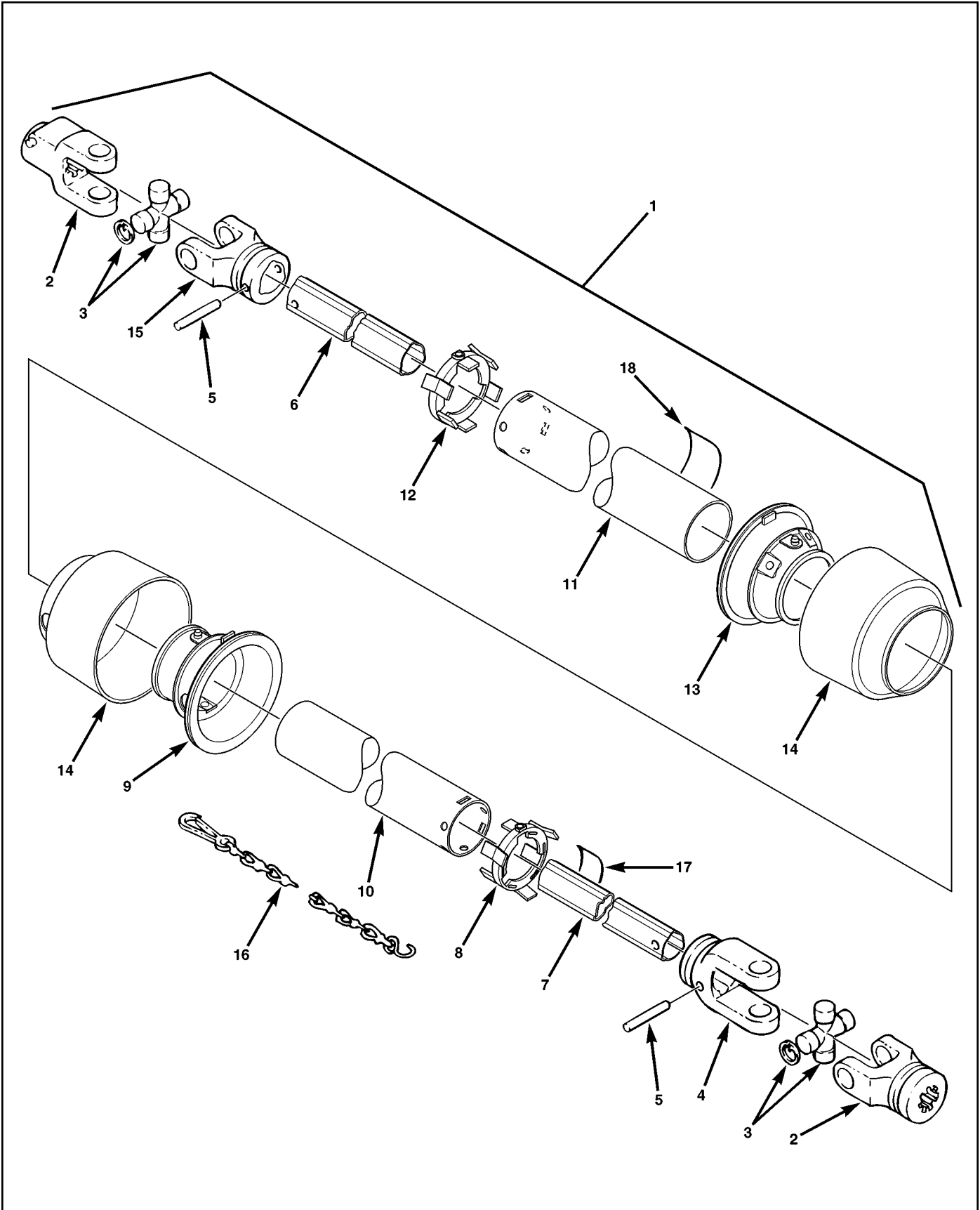
AR - As Required NSS - Not Serviced Separately ASN - After Serial No. BSN - Before Serial No. LP - Local Purchase



New Holland, PA 17557
Phone (717) 354-8721 • FAX (717) 354-2162
1-800-342-0905
www.preseeder.com

Preseeder tiller Models 600, 600A & 800 PARTS LIST

Figure 2. PTO Shaft Assembly BSN-49797W



Preseeder tiller Models 600, 600A & 800 PARTS LIST



New Holland, PA 17557
Phone (717) 354-8721 • FAX (717) 354-2162
1-800-342-0905
www.preseeder.com

Figure 2. PTO Shaft Assembly BSN-49797W

Item	Part No.	Qty	Description
1	000-176-053	1	Shaft Assembly, PTO, Includes Items 2 thru 18
2	000-176-054	2	Yoke, Splined
3	000-176-055	2	Kit, Cross and Bearing
4	000-176-060	1	Yoke, Inboard, Female Tube
5	000-176-057	2	Pin, Roll
6	000-176-058	1	Telescoping Member-Male
7	000-176-059	1	Telescoping Member-Female
8	000-176-134	1	Ring, Bearing-Inner
9	000-176-061	1	Base Cone, Inner
10	000-176-063	1	Tube, Inner Guard
11	000-176-062	1	Tube, Outer Guard
12	000-176-133	1	Ring, Bearing-Outer
13	000-176-135	1	Base Cone, Outer
14	000-176-136	2	Bell, Outer
15	000-176-056	1	Yoke, Inboard, Male Tube
16	000-176-064	1	Chain
17	000-186-016	1	Decal, Danger-Inner
18	000-186-015	1	Decal, Danger-Outer

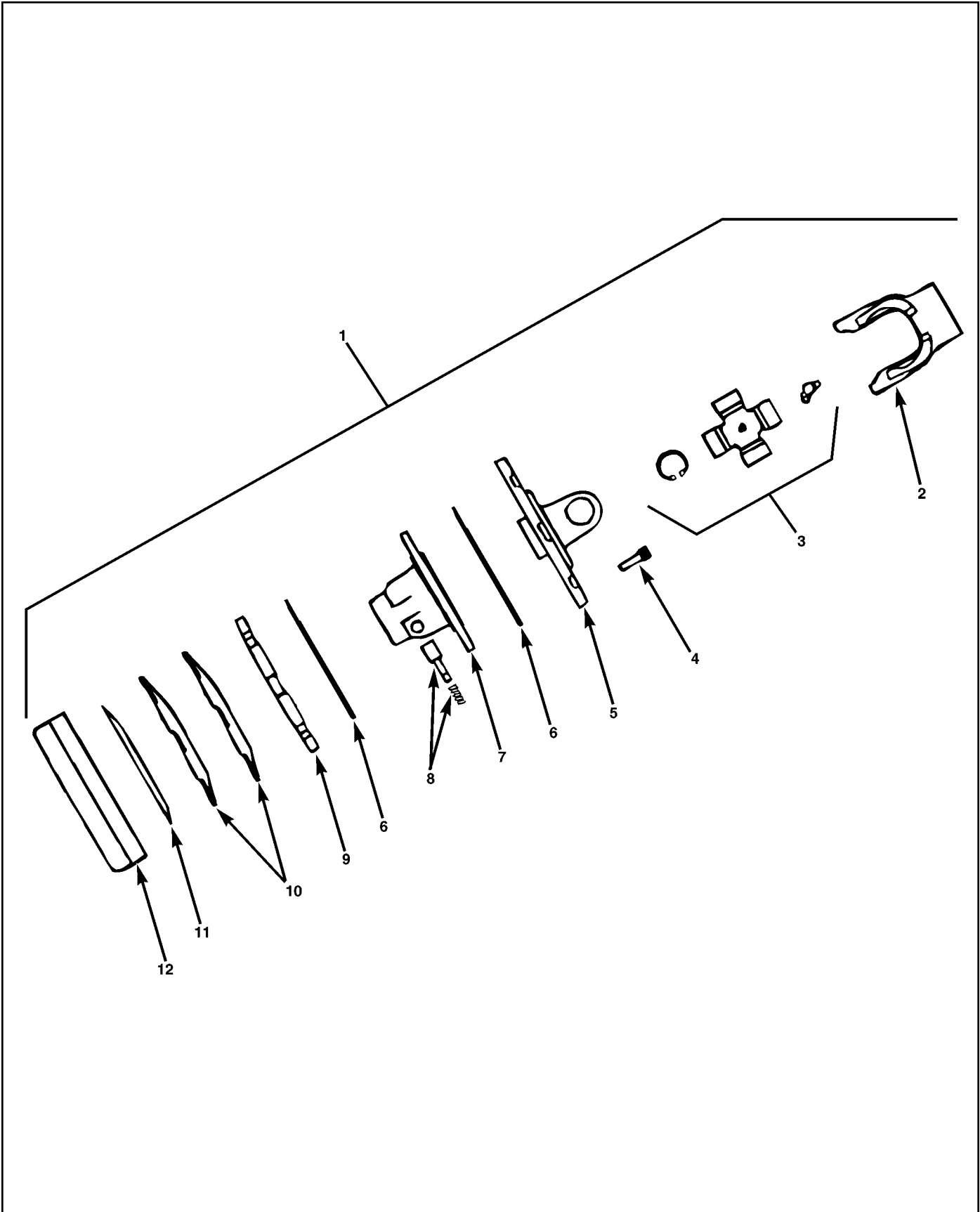
AR - As Required NSS - Not Serviced Separately ASN - After Serial No. BSN - Before Serial No. LP - Local Purchase



New Holland, PA 17557
Phone (717) 354-8721 • FAX (717) 354-2162
1-800-342-0905
www.preseeder.com

Preseeder tiller Models 600, 600A & 800 PARTS LIST

Figure 3. Slip Clutch Assembly BSN-F49797W



Preseeder tiller Models 600, 600A & 800 PARTS LIST



New Holland, PA 17557
Phone (717) 354-8721 • FAX (717) 354-2162
1-800-342-0905
www.preseeder.com

Figure 3. Slip Clutch Assembly BSN-F49797W

Item	Part No.	Qty	Description
1	000-176-065	1	Clutch Assembly, Slip (Model 600) BSN-F29631
	000-176-066	1	Clutch Assembly, Slip (Model 600A) ASN-F29630
	000-176-067	1	Clutch Assembly, Slip (Model 800)
			Includes Items 2 thru 12
2	000-176-068	1	Yoke (Model 600)
	000-176-069	1	Yoke (Model 800)
3	000-176-055	1	Kit, Cross & Bearing (Model 600)
	000-176-071	1	Kit, Cross & Bearing (Model 800)
4	000-176-072	AR	Screw, Clamping (Model 600)
	000-176-073	AR	Screw, Clamping (Model 800)
5	000-176-074	1	Flange Yoke (Model 600)
	000-176-075	1	Flange Yoke (Model 800)
6	000-176-076	2	Disc, Friction (Model 600)
	000-176-077	2	Disc, Friction (Model 800)
7	000-176-078	1	Hub (Model 600)
	000-176-079	1	Hub (Model 800)
8	000-176-080	1	Push Button
9	000-176-081	1	Plate, Tightening (Model 600)
	000-176-082	1	Plate, Tightening (Model 800)
10	000-176-083	2	Spring, Belleville (Model 600) BSN-F29631
	000-176-084	2	Spring, Belleville (Model 600A) ASN-F29630
	000-176-085	2	Spring, Belleville (Model 800)
11	000-176-086	1	Ring, Retaining (Model 600)
	000-176-087	1	Ring, Retaining (Model 800)
12	000-176-088	1	Housing (Model 600)
	000-176-089	1	Housing (Model 800)

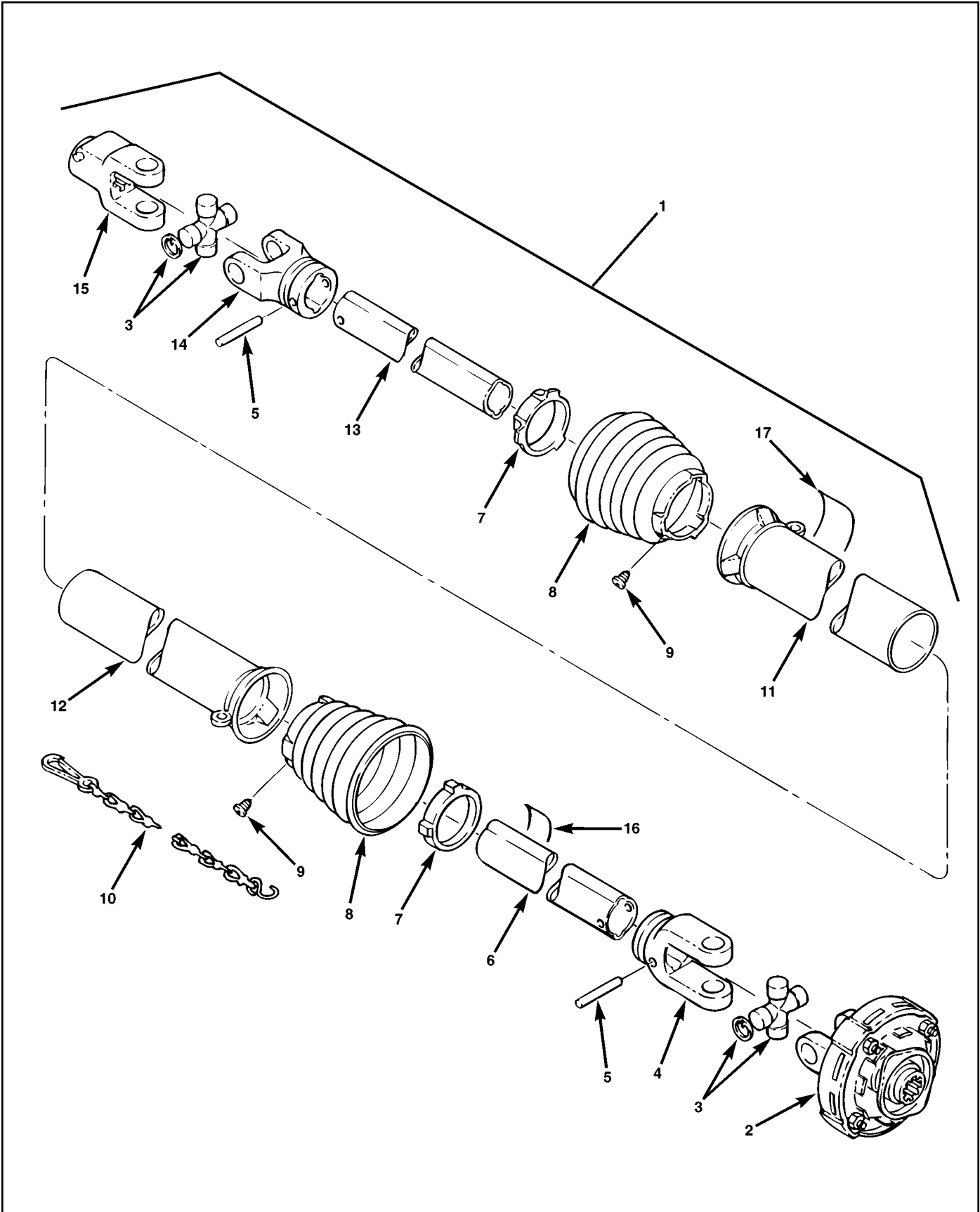
AR - As Required NSS - Not Serviced Separately ASN - After Serial No. BSN - Before Serial No. LP - Local Purchase



New Holland, PA 17557
Phone (717) 354-8721 • FAX (717) 354-2162
1-800-342-0905
www.preseeder.com

Preseeder tiller Models 600, 600A & 800 PARTS LIST

Figure 4. PTO Shaft Assembly ASN-F49796



Preseeder tiller Models 600, 600A & 800 PARTS LIST



New Holland, PA 17557
Phone (717) 354-8721 • FAX (717) 354-2162
1-800-342-0905
www.preseeder.com

Figure 4. PTO Shaft Assembly ASN-F49796

Item	Part No.	Qty	Description
1	000-176-025	1	Shaft Assembly, PTO (Model 600A)
	000-176-120	1	Shaft Assembly, PTO (Model 800)
			Includes Items 2 thru 17
2	000-176-026	1	Clutch Assembly, Friction (Model 600A) (See Figure 5 for Breakdown)
	000-176-090		Clutch Assembly, Friction (Model 800) (See Figure 5 for Breakdown)
3	000-176-027	2	Kit, Cross, Bearing, Retaining Rings and Lube Fitting
4	000-176-028	1	Yoke, Inboard, Female Member
5	000-176-029	2	Pin
6	000-176-030	1	Telescoping Member, Female
7	000-176-031	2	Bearing Ring
8	000-176-032	2	Guard Cone
9	000-176-033	2	Screw
10	000-176-034	1	Chain, Safety
11	000-176-035	1	Tube, Outer Guard
12	000-176-036	1	Tube, Inner Guard
13	000-176-037	1	Telescoping Member, Male
14	000-176-038	1	Yoke, Inboard, Male Member
15	000-176-039	1	Yoke, Splined, Tractor
16	000-186-015	1	Decal, Danger, Inner
17	000-186-016	1	Decal, Danger, Outer

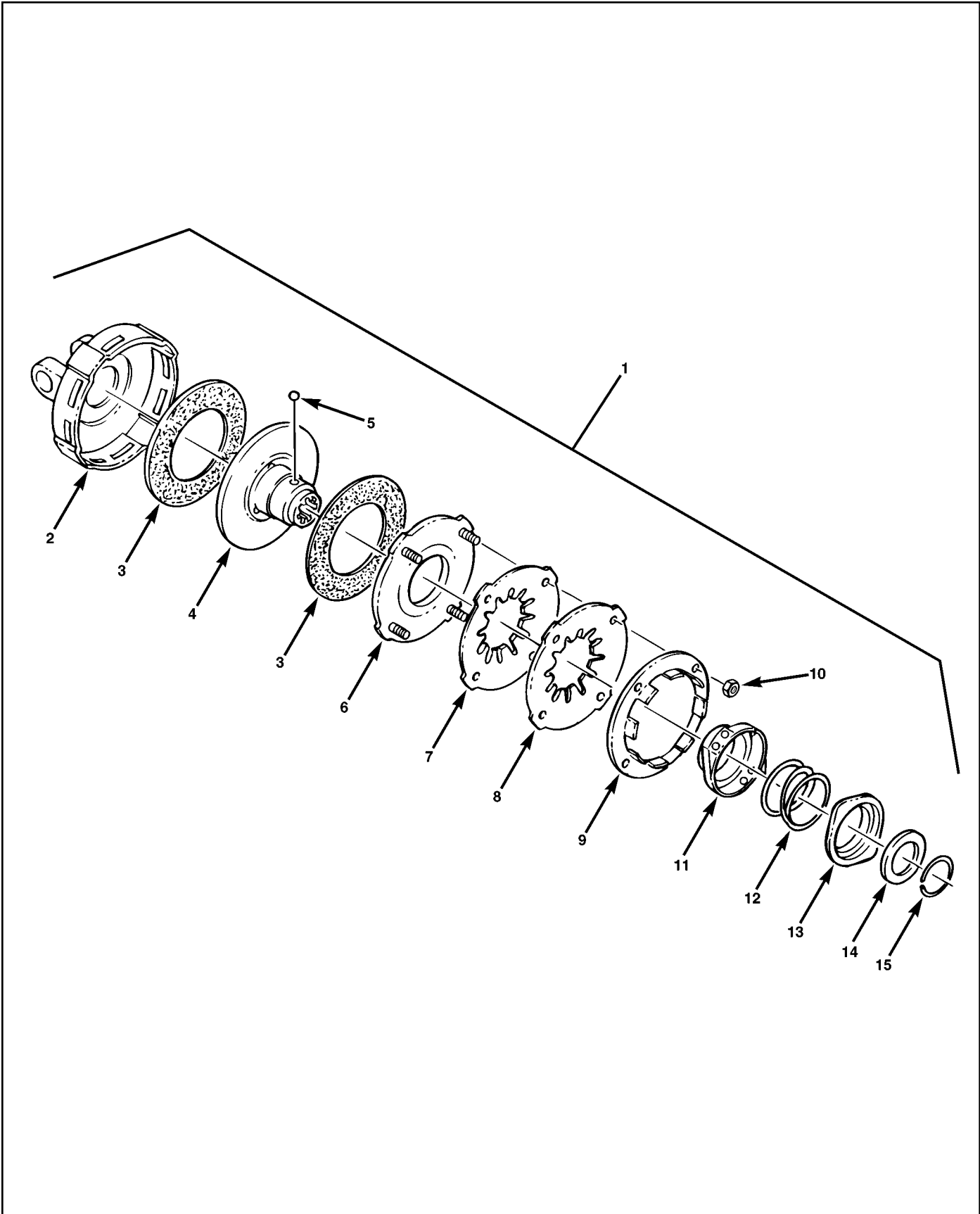
AR - As Required NSS - Not Serviced Separately ASN - After Serial No. BSN - Before Serial No. LP - Local Purchase



New Holland, PA 17557
Phone (717) 354-8721 • FAX (717) 354-2162
1-800-342-0905
www.preseeder.com

Preseeder tiller Models 600, 600A & 800 PARTS LIST

Figure 5. Friction Clutch Assembly ASN-F49796



Preseeder tiller Models 600, 600A & 800 PARTS LIST



New Holland, PA 17557
Phone (717) 354-8721 • FAX (717) 354-2162
1-800-342-0905
www.preseeder.com

Figure 5. Friction Clutch Assembly ASN-F49796

Item	Part No.	Qty	Description
1	000-176-026	1	Clutch Assembly, Friction (Model 600A)
	000-176-090	1	Clutch Assembly, Friction (Model 800)
			Includes Items 2 thru 15
2	000-176-040	1	Housing, Clutch
3	000-176-041	2	Disc, Friction
4	000-176-042	1	Hub
5	000-176-043	3	Ball
6	000-176-044	1	Plate, Thrust
7	000-176-045	1	Spring, Belleville White (Models 600A & 800)
8	000-176-046	1	Spring, Belleville Green (Models 600 & 600A)
	000-176-045	1	Spring, Belleville White (Model 800)
9	000-176-047	1	Ring, Lug
10	LP	4	Nut, Hex, M8-1.25
11	000-176-048	1	Sleeve, Alarm
12	000-176-049	1	Spring, Compression
13	000-176-050	1	Collar, Lock
14	000-176-051	1	Ring, Flanged
15	000-176-052	1	Ring Snap

AR - As Required NSS - Not Serviced Separately ASN - After Serial No. BSN - Before Serial No. LP - Local Purchase



New Holland, PA 17557
 Phone (717) 354-8721 • FAX (717) 354-2162
 1-800-342-0905
 www.preseeder.com

Preseeder tiller Models 600, 600A & 800 PARTS LIST

Figure 6. Decals



Preseeder tiller Models 600, 600A & 800 PARTS LIST



New Holland, PA 17557
Phone (717) 354-8721 • FAX (717) 354-2162
1-800-342-0905
www.preseeder.com

Figure 6. Decals

Item	Part No.	Qty	Description
	000-186-003	1	Kit: Decals (Model 600) Includes All Items Except 3 and 11
	000-186-004	1	Kit: Decals (Model 800) Includes All Items Except 2 and 11
1	000-186-005	1	Decal, Preseeder
2	000-186-017	1	Decal, 600
3	000-186-018	1	Decal, 800
4	000-186-009	2	Decal, Oil Fill
5	000-186-010	2	Decal, Oil Level
6	000-186-011	1	Decal, Warning
7	000-186-014	2	Decal, Warning (Rotating Teeth)
8	000-186-015	1	Decal, Danger (Shield Missing)
9	000-186-016	1	Decal, Danger (Rotating Drive Shafts)
10	000-186-035	1	Plate, Model and Serial Number, Adhesive Backed

AR - As Required NSS - Not Serviced Separately ASN - After Serial No. BSN - Before Serial No. LP - Local Purchase