

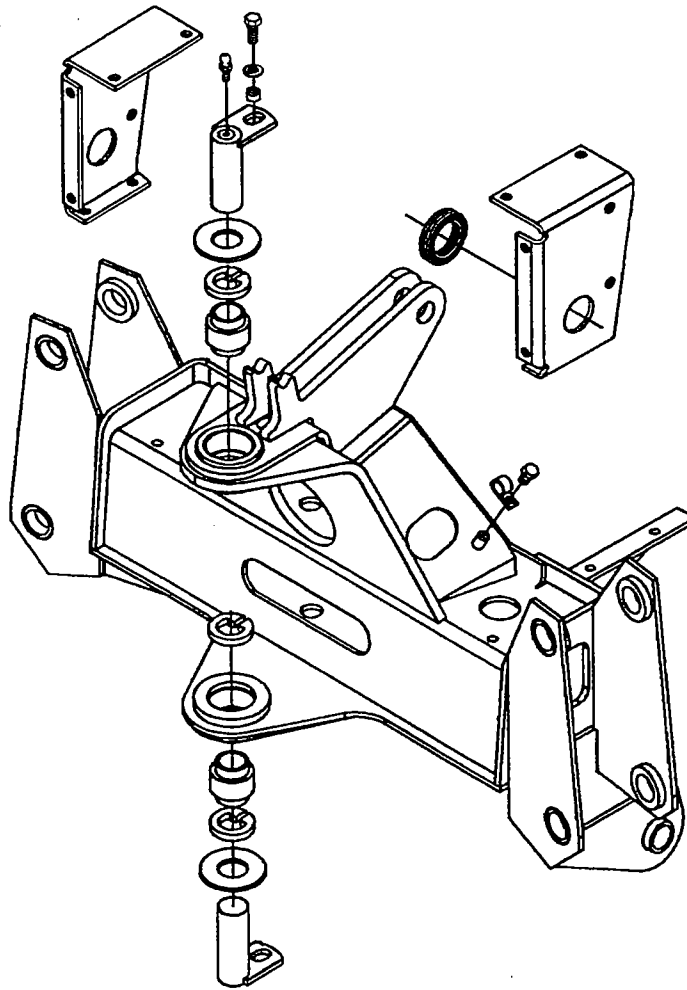
BRADCO®

3375 BACKHOE 3-POINT HITCH / CATEGORY I

PM581

7864

9-9-99



PARTS MANUAL

75481

BRADCO®

P.O. Box 266 · Delhi, Iowa 52223 USA

(319) 922-2981 · (800) 922-2981

Fax 319-922-2130

A Division of Attachment Technologies, Inc.

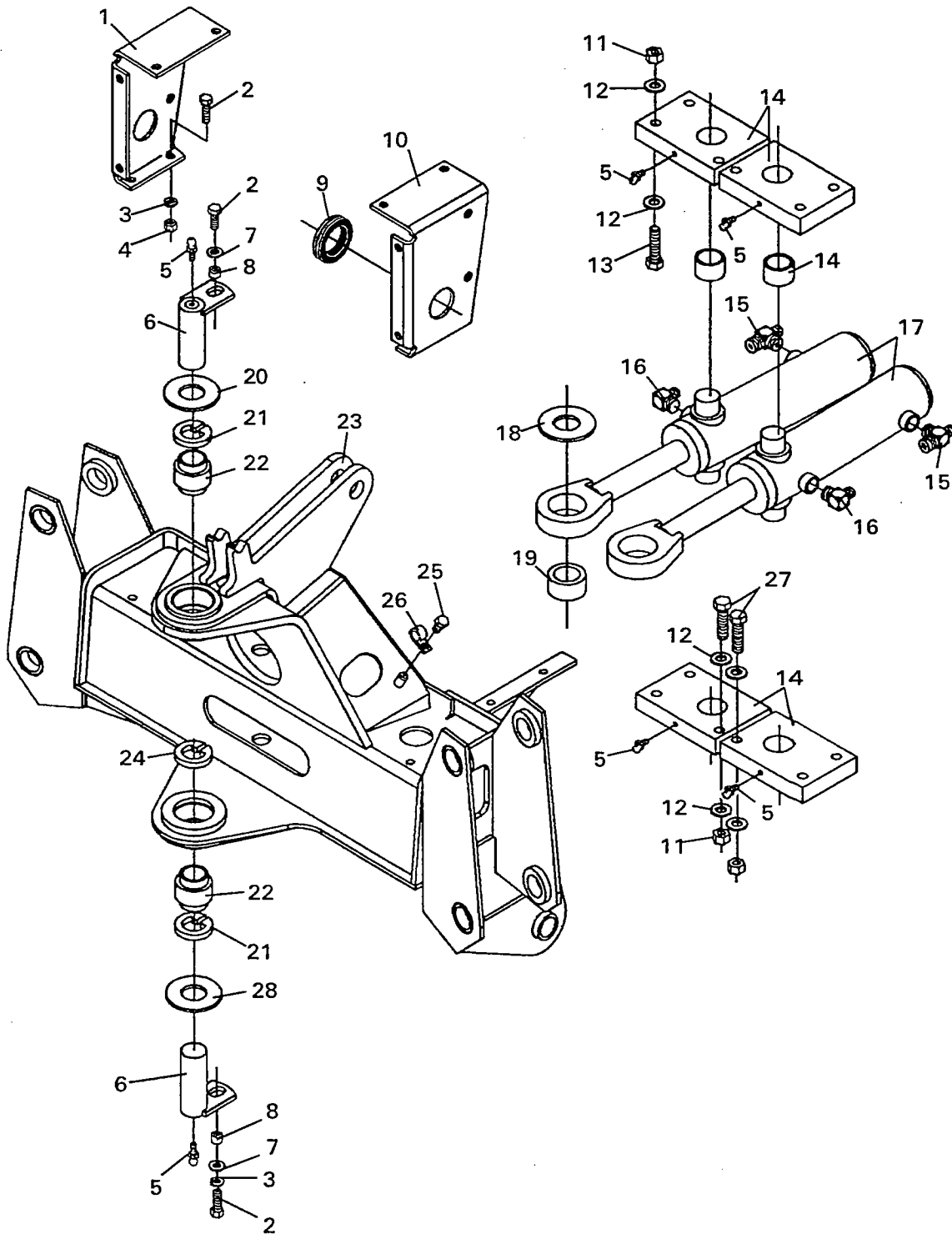
TABLE OF CONTENTS

SERVICE PARTS

MAINFRAME ASSEMBLY	#86630
Mainframe	
Swing Post	
Stabilizers	
3-POINT HITCH ADAPTER KIT	#86638
BOOM & DIPPER ASSEMBLY	#86632
Boom	
Dipper	
CONSOLE ASSEMBLY	#86631
VALVE ASSEMBLY	#2238
UP TO SERIAL #---15188	
SERIAL #---15188 & UP	
CYLINDERS	
SWING CYLINDER	#86576
STABILIZER CYLINDER	#83397
BOOM CYLINDER	#86587
DIPPER CYLINDER	#86561
BUCKET CYLINDER	#86505
HOSE SETS	
MAINFRAME HOSE SET	#86643
BOOM & DIPPER HOSE SET	#86644
STABILIZER PAD OPTIONS	
FLAT STABILIZER PAD ASSEMBLY	#81861
GROUSER STABILIZER PAD ASSEMBLY	#81860
RUBBER STABILIZER PAD ASSEMBLY	#81862
FLIP OVER STABILIZER PAD ASSEMBLY	#83058
STABILIZER CYLINDER GUARDS	#83850
BUCKET OPTIONS	
10" BUCKET	#81710
12" BUCKET	#81712
16" BUCKET	#81716
18" BUCKET	#81718
25" BUCKET	#81720
DECALS	#40337

MAINFRAME ASSEMBLY

ASSEMBLY #86630
MAINFRAME



MAINFRAME ASSEMBLY

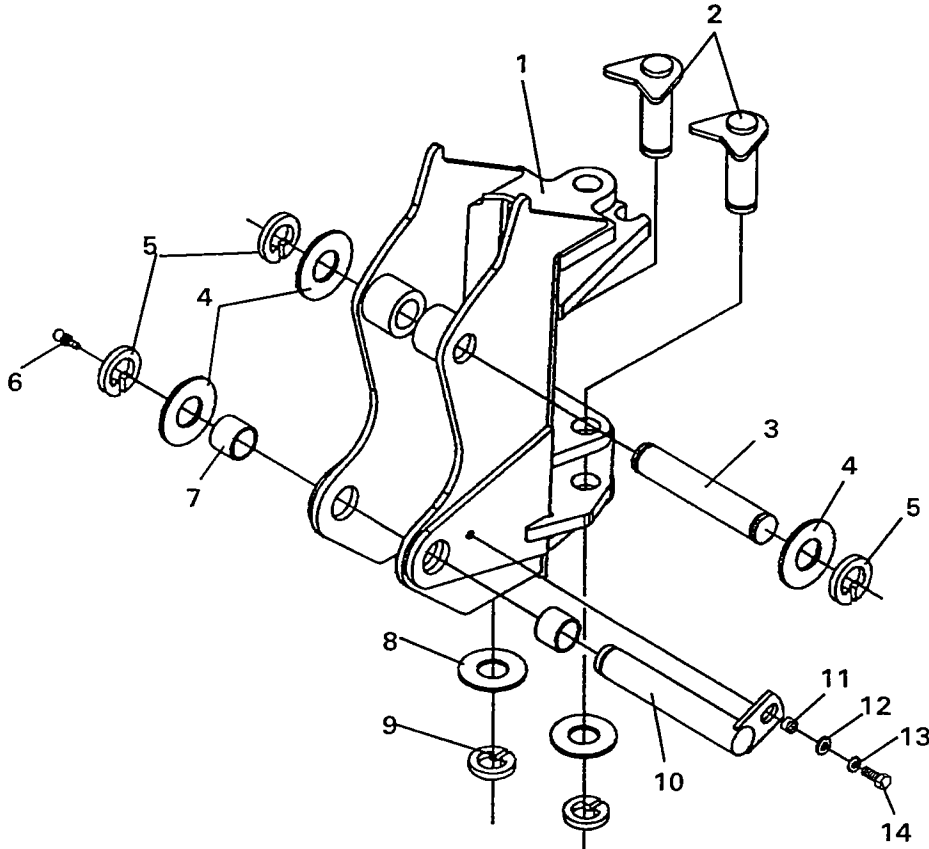
ASSEMBLY #86630

MAINFRAME

<u>NO</u>	<u>REQ'D</u>	<u>PART NO.</u>	<u>DESCRIPTION</u>
1	1	86487	Right Console Support Bracket
2	6	1043	.38" UNC X 1.00" Hex Capscrew
3	5	1503	.38" Lock Washer
4	4	1226	.38" UNC Hex Nut
5	6	6616	Grease Zerk
6	2	81592	Pivot Pin
7	2	1514	.38" Flat Washer
8	2	81807	Spacer Tube
9	2	62819	Grommet
10	1	86488	Left Console Support Bracket
11	12	1841	.50" UNC Hex Lock Nut
12	24	1646	.50" Hard Flat Washer
13	10	1092	.50" UNC X 2.00" Hex Capscrew
14	4	87761	Swing Cylinder Mounting Plate
	4	86564	Bushing (Included in Mounting Plate)
15	2	30137	Tee
16	2	3434	90° Elbow 6MBo - 6MJ
17	2	86576	Swing Cylinder Assembly
18	Varies	57693	Thrust Washer 1.25" X .078"
	Varies	64727	Thrust Washer 1.25" X .145"
	Varies	64728	Thrust Washer 1.25" X .031"
19	2	81585	Spacer
20	1	83977	Thrust Washer 1.38" X .125" Hardened
21	2	1929	Snap Ring
22	2	6615	Bearing
23	1	86361	Mainframe
24	1	1650	Snap Ring
25	2	1041	.38" UNC X .50" Hex Capscrew
26	2	54900	Hose Clamp
27	2	1094	.50" UNC X 2.50" Hex Capscrew
28	Varies	83975	Thrust Washer 1.38" X .031" Hardened
	Varies	83976	Thrust Washer 1.38" X .090" Hardened
	Varies	83977	Thrust Washer 1.38" X .125" Hardened

MAINFRAME ASSEMBLY

ASSEMBLY #86630
SWING POST



MAINFRAME ASSEMBLY

ASSEMBLY #86630

SWING POST

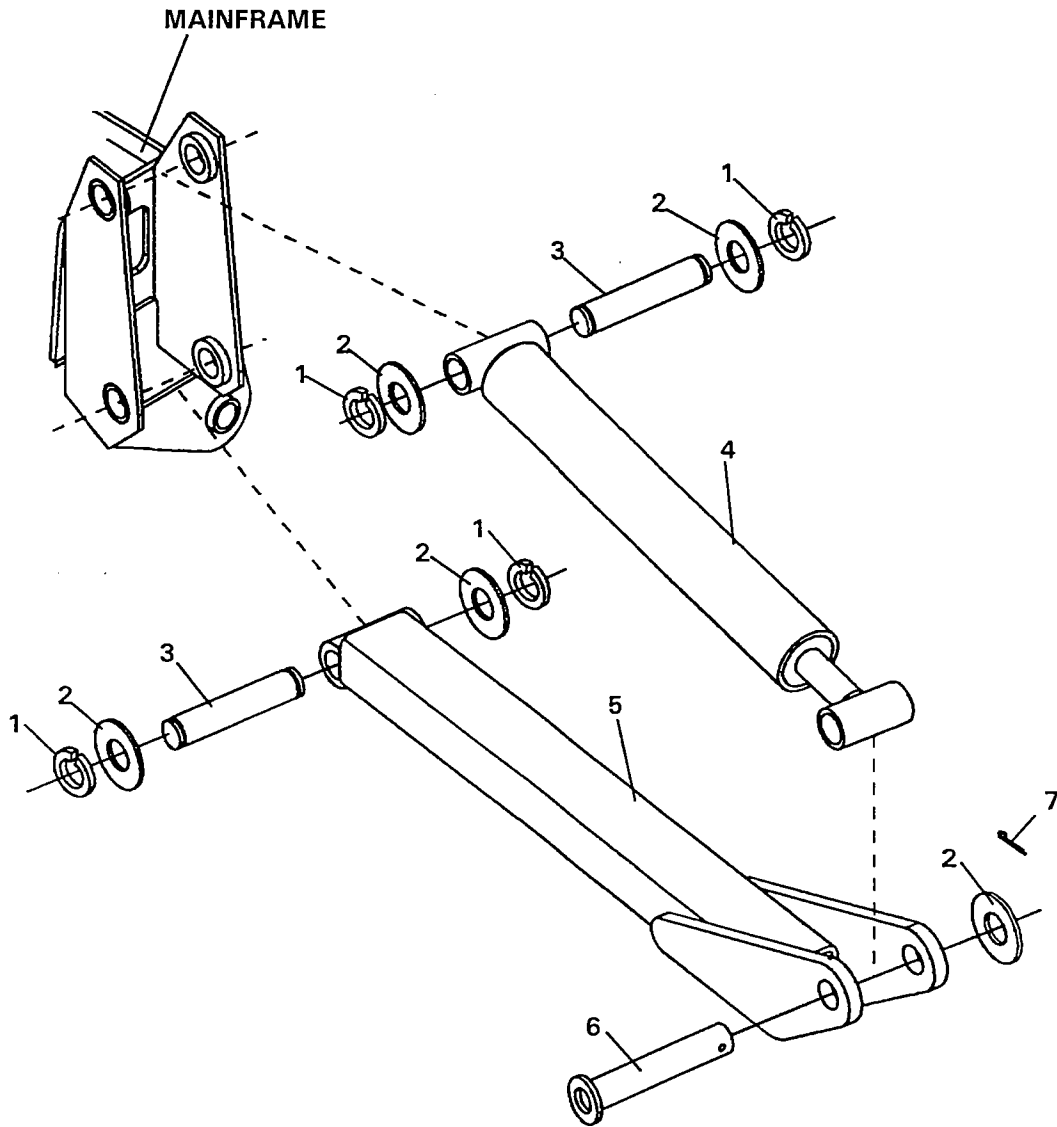
<u>NO</u>	<u>REQ'D</u>	<u>PART NO.</u>	<u>DESCRIPTION</u>
1	1	86633	Swing Post (Includes 2 - #82443 Bushings Installed with Locktite Grade 680)
2	2	87918	Pin
3	1	86242 (1)	Pin
4	Varies	83975	Thrust Washer 1.38" X .031" Hardened
	Varies	83976	Thrust Washer 1.38" X .090" Hardened
	Varies	83977	Thrust Washer 1.38" X .125" Hardened
5	3	1650	Snap Ring
6	1	6616	Grease Zerk
7	-	82443	Bushing (Included in Swing Post) (Installed with Locktite Grade 680)
8	Varies	64728	Thrust Washer 1.25" X .031"
9	2	1652	Snap Ring
10	1	86603	Pin
11	1	81807	Spacer Tube
12	1	1514	.38" Flat Washer
13	1	1503	.38" Lock Washer
14	1	1043	.38" UNC X 1.00" Hex Capscrew

NOTE:

(1) Pivot Pin #86242 is sold only in Pin Kit #88012. Kit includes one pin #86242, two thrust washers #6623 and two snap rings #1650.

MAINFRAME ASSEMBLY

ASSEMBLY #86630
STABILIZERS



MAINFRAME ASSEMBLY

ASSEMBLY #86630
STABILIZERS

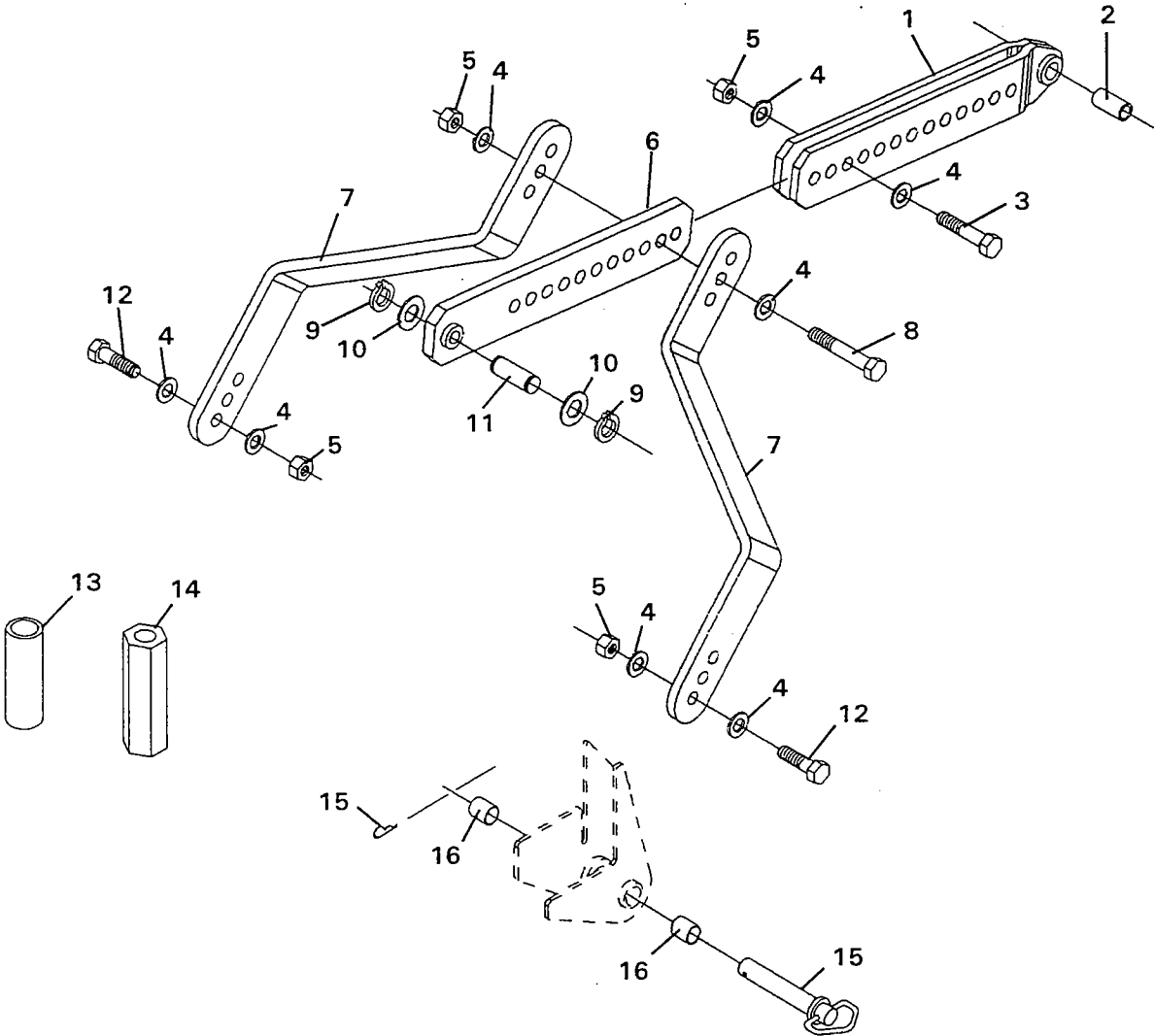
<u>NO</u>	<u>REQ'D</u>	<u>PART NO.</u>	<u>DESCRIPTION</u>
1	8	1652	Snap Ring
2	Varies	57693	Thrust Washer 1.25" X .078"
	Varies	64727	Thrust Washer 1.25" X .145"
	Varies	64728	Thrust Washer 1.25" X .031"
3	4	81846 (1)	Pin
4	2	83397	Stabilizer Cylinder Assembly
	2	6616	Grease Zerk
5	2	83393	Stabilizer Arm
6	2	83257	Pin
7	2	1613	Cotter Pin .25" X 2.00"

NOTE:

(1) Pivot Pin #81646 is sold only in Pin Kit #86314. Kit includes one pin #81646, two thrust washers #64727 and two snap rings #1652.

3-POINT HITCH ADAPTER KIT

ASSEMBLY #86638



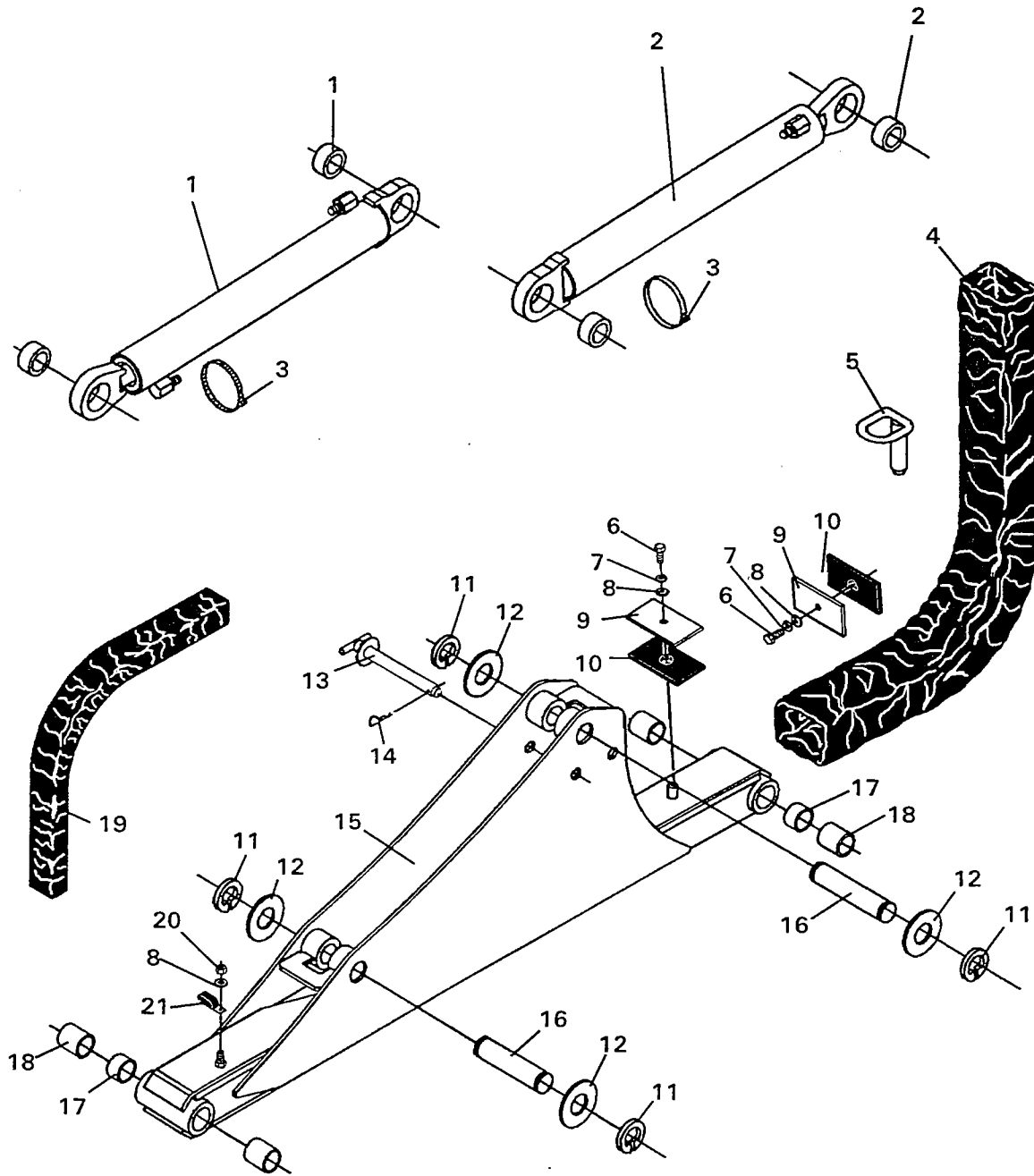
3-POINT HITCH ADAPTER KIT

ASSEMBLY #86638

<u>NO</u>	<u>REQ'D</u>	<u>PART NO.</u>	<u>DESCRIPTION</u>
1	1	86611	Center Double Link
2	1	86619	Spacer Tube
3	1	1144	.75" UNC X 2.50" Hex Capscrew
4	8	1649	.75" Hard Flat Washer
5	4	1534	.75" UNC Hex Locknut
6	1	86615	Center Single Link
7	2	86601	Hitch Lock Out Arm
8	1	1148	.75" UNC X 4.50" Hex Capscrew
9	2	1570	Snap Ring
10	2	57462	Thrust Washer
11	1	86620	Pin
12	2	1141	.75" UNC X 2.50" Hex Capscrew
13	1	45132	Inline Filter
14	1	45691	Check Valve
15	2	1987	Hitch Pin - Includes Retainer
16	4	86623	Adapter Bushing

BOOM & DIPPER ASSEMBLY

ASSEMBLY #86632



BOOM & DIPPER ASSEMBLY

ASSEMBLY #86632

<u>NO</u>	<u>REQ'D</u>	<u>PART NO.</u>	<u>DESCRIPTION</u>
1	1	86561	Dipper Cylinder Assembly
	2	85772	Bushing (Included in Cylinder Assembly)
	2	6616	Grease Zerk
	-	-----	Straight Adapter (#3269 8MBo-6MJ - If Required)
2	1	86587	Boom Cylinder Assembly
	2	85772	Bushing (Included in Cylinder Assembly)
	1	6616	Grease Zerk
	1	53031	90° Grease Zerk
	-	-----	Straight Adapter (#3269 8MBo-6MJ - If Required)
3	2	85770	Hose Clamp
4	1	34133	Hose Sock 4.00" X 45"
5	1	87363	Swing Lock Pin
6	2	1043	.38" UNC X 1.00" Hex Capscrew
7	2	1503	.38" Lock Washer
8	3	1514	.38" Flat Washer
9	2	81881	Clamp Plate
10	2	81882	Rubber Spacer
11	4	1650	Snap Ring
12	Varies	6623	Thrust Washer 1.38" X .031"
	Varies	64724	Thrust Washer 1.38" X .090"
	Varies	64725	Thrust Washer 1.38" X .125"
13	1	87361	Boom Lock Pin
14	1	1860	Hair Pin Cotter
15	1	86504	Boom Assembly (Includes (4) #81610 Bushings and (2) #83368 Spacers - Bushing installed with Locktite 680)
16	2	81679 (1)	Pivot Pin
17	2	83368	Spacer (Included in Boom Assembly)
18	4	81610	Bushing (Included in Boom Assembly) (Installed with Locktite 680)
19	1	34095	Hose Sock 2.00" X 20"
20	1	1837	.38" UNC Lock Nut
21	1	82859	Double Hose Clamp

NOTE:

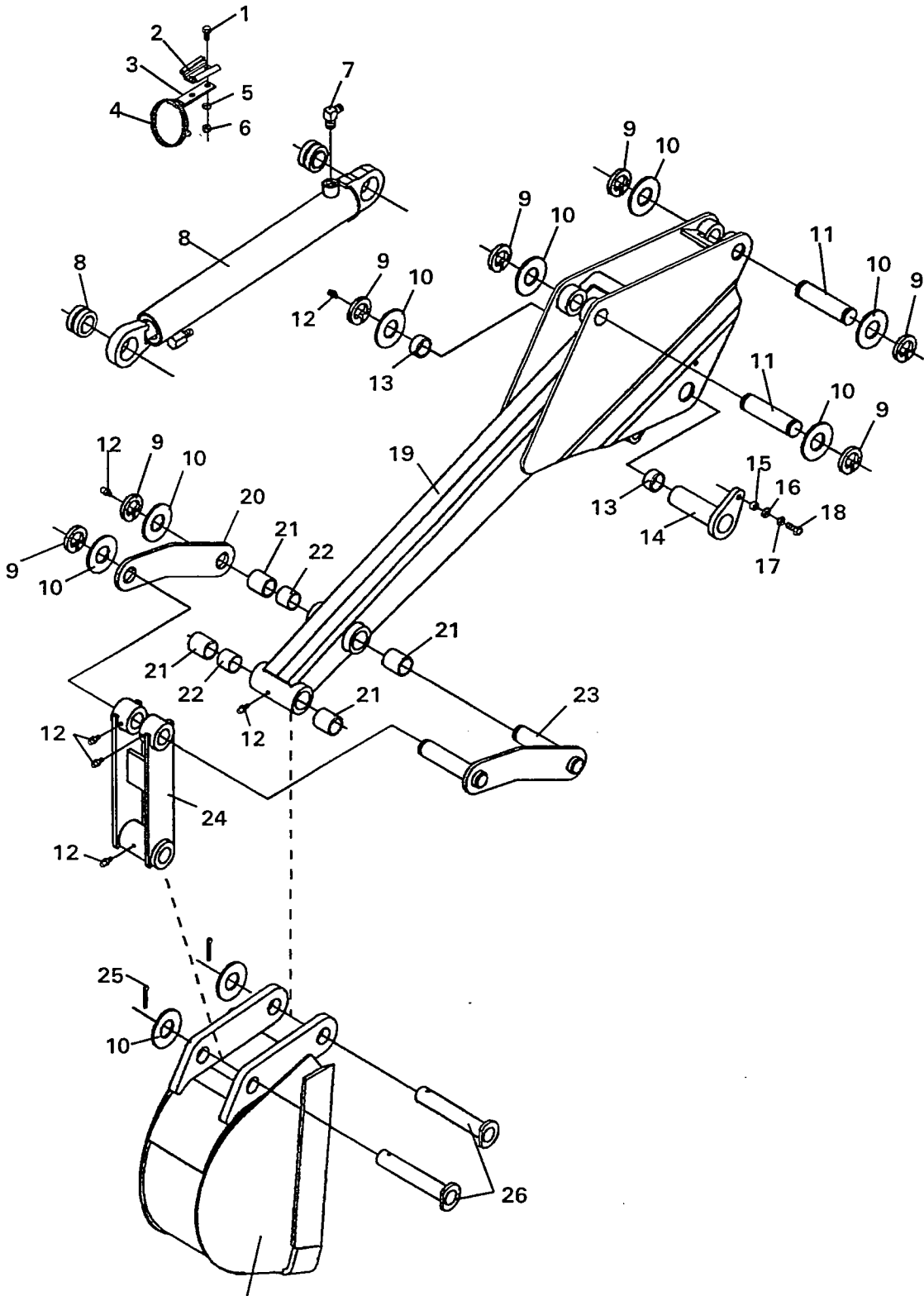
(1) Pivot Pin #81679 is sold only in Pin Kit #86311. Kit includes one pin #81679, two thrust washers #6623 and two snap rings #1650.

7841

8-30-99

BOOM & DIPPER ASSEMBLY

ASSEMBLY #86632



BUCKET

(NOT INCLUDED IN BOOM & DIPPER ASSEMBLY)

7842
8-30-99

BOOM & DIPPER ASSEMBLY

ASSEMBLY #86632

<u>NO</u>	<u>REQ'D</u>	<u>PART NO.</u>	<u>DESCRIPTION</u>
1	2	1020	.31" UNC X .50" Hex Capscrew
2	1	7448	SMV Clip
3	1	85745	SMV Bracket
4	1	84770	Hose Clamp
5	2	1502	.31" Lock Washer
6	2	1225	.31" UNC Hex Nut
7	1	3434	90° Elbow 6MBo-6MJ
8	1	86505	Bucket Cylinder Assembly
	2	85772	Bushing (Included in Cylinder Assembly)
	2	6616	Grease Zerk
	-	-----	Straight Adapter (#3269 8MBo-6MJ - If Required)
9	7	1650	Snap Ring
10	Varies	6623	Thrust Washer 1.38" X .031"
	Varies	64724	Thrust Washer 1.38" X .090"
	Varies	64725	Thrust Washer 1.38" X .125"
11	2	86608 (1)	Pivot Pin
12	6	6616	Grease Zerk
13	2	82443	Bushing (Included in Dipper Assembly) (Installed with Locktite Grade 680)
14	1	86603	Pin
15	1	81807	Spacer Tube
16	1	1514	.38" Flat Washer
17	1	1503	.38" Lock Washer
18	1	1043	.38" UNC X 1.00" Hex Capscrew
19	1	86489	Dipper Assembly (Includes (4) #81610 Bushings, (2) 82443 Bushings and (2) #83368 Spacers - Bushings Installed with Locktite Grade 680)
20	1	84913	Dipper Link
21	4	81610	Bushing (Included in Dipper Assembly) (Installed with Locktite Grade 680)
22	2	83368	Spacer (Included in Dipper Assembly)
23	1	83411	Dipper Link
24	1	81824	Bucket Link
25	2	1613	Cotter Pin
26	2	81672	Bucket Pin

NOTE:

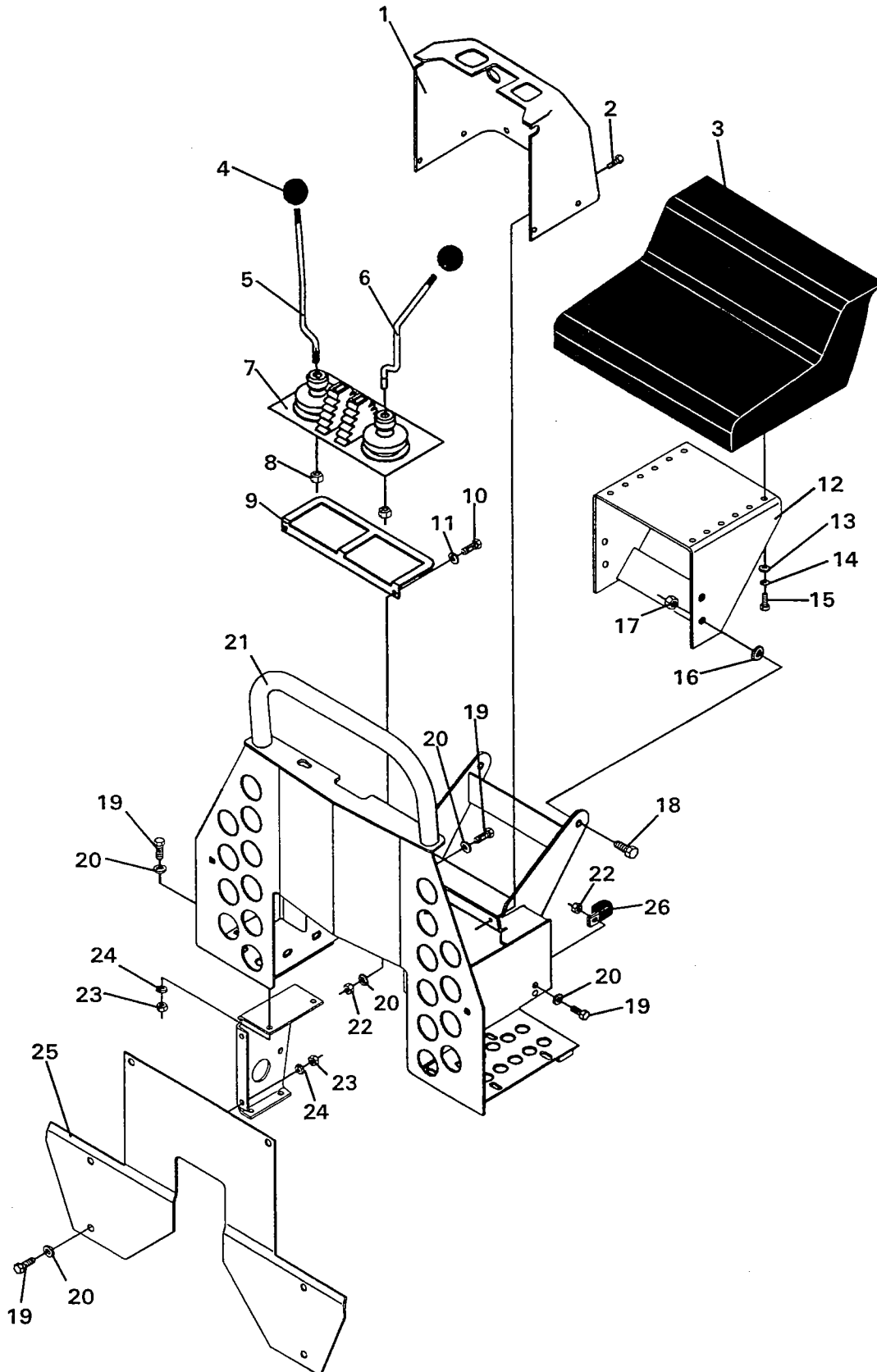
(1) Pivot Pin #86608 sold in Pin Kit #88011 Only. Kit Includes one pin #86608, two #6623 thrust washers and two 1650 snap rings.

7843

8-30-99

CONSOLE ASSEMBLY

ASSEMBLY #86631



CONSOLE ASSEMBLY

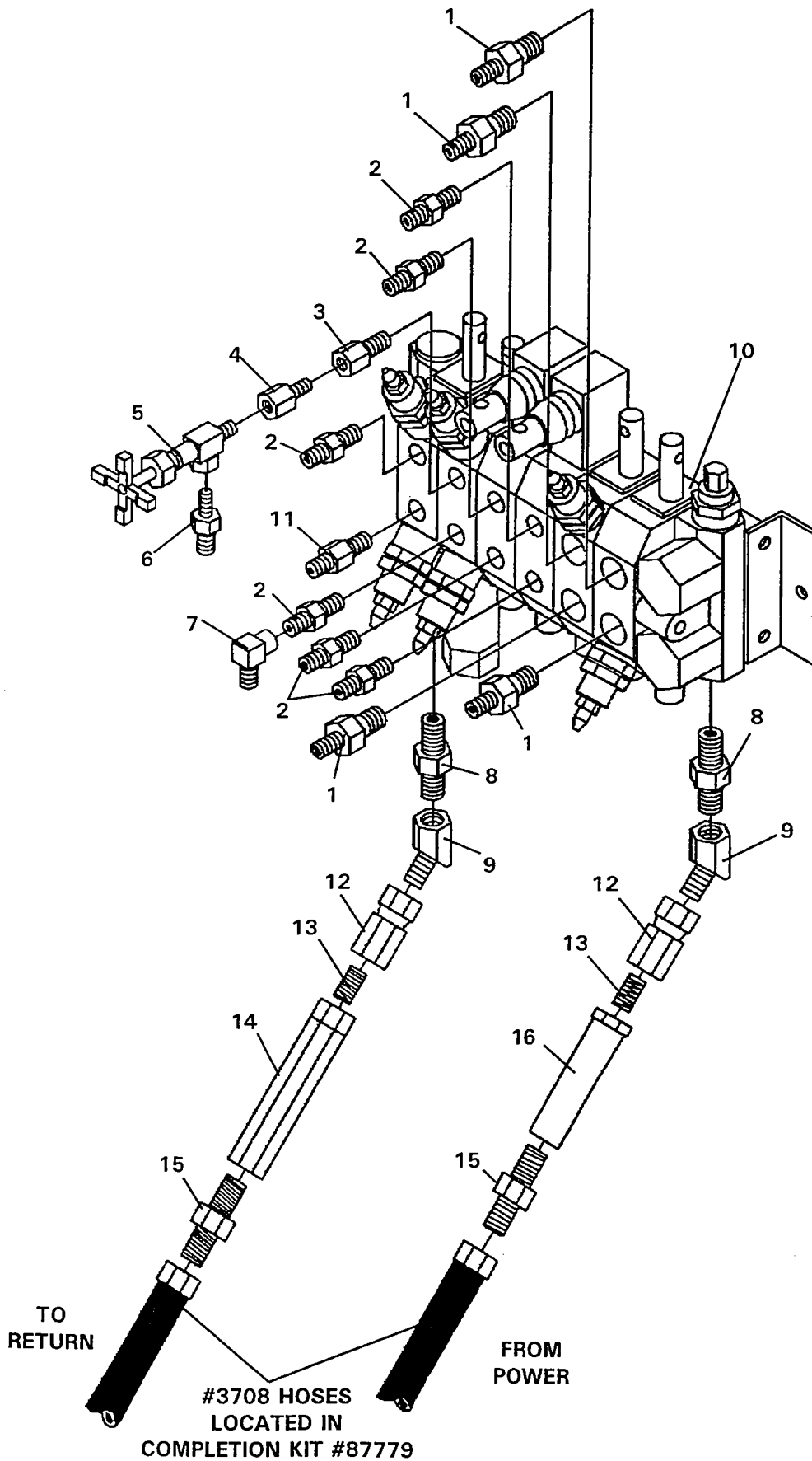
ASSEMBLY #86631

<u>NO</u>	<u>REQ'D</u>	<u>PART NO.</u>	<u>DESCRIPTION</u>
1	1	88003	Console Cover with Decals
2	6	1958	.25" UNC X .75" Flange Head Capscrew
3	1	6980	Seat
4	2	85838	Ball Handle
5	1	87952	Right Control Handle
6	1	87951	Left Control Handle
7	1	83235	Control Lever Boot
8	2	2558	M10 Hex Nut
9	1	85826	Boot Support Plate
10	2	1001	.25" UNC X .50" Hex Capscrew
11	2	1501	.25" Lock Washer
12	1	82999	Seat Mounting Bracket
13	4	1513	.31" Flat Washer
14	4	1502	.31" Lock Washer
15	4	1021	.31" UNC X .75" Hex Capscrew
16	2	1516	.50" Flat Washer
17	2	1542	.50" UNC Lock Nut
18	2	1088	.50" UNC X 1.00" Hex Capscrew
19	12	1043	.38" UNC X 1.00" Hex Capscrew
20	14	1514	.38" Flat Washer
21	1	86626	Console
22	4	1837	.38" UNC Lock Nut
23	8	1226	.38" UNC Hex Nut
24	8	1503	.38" Lock Washer
25	1	87739	Closure Panel
26	2	82861	Double Hose Clamp

VALVE ASSEMBLY

ASSEMBLY #2238

UP TO SERIAL #---15188



7846
9-2-99

VALVE ASSEMBLY

ASSEMBLY #2238

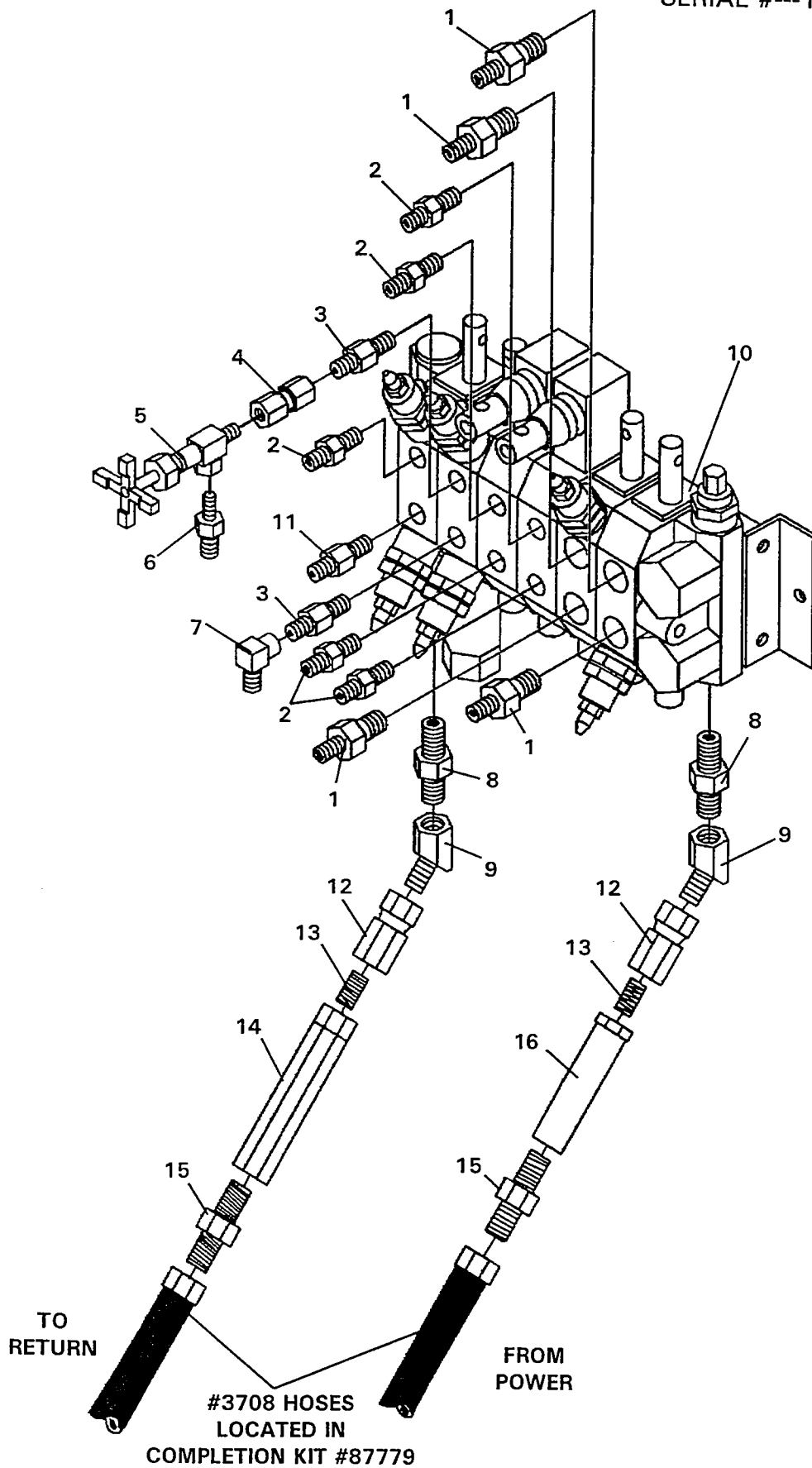
UP TO SERIAL #---15188

<u>NO</u>	<u>REQ'D</u>	<u>PART NO.</u>	<u>DESCRIPTION</u>
1	4	3269	Straight Adapter 8MBo-6MJ
2	6	3457	Straight Adapter 6MBo-6MJ
3	1	3461	Bushing Adapter 6MBo-4FP
4	1	3356	Straight Adapter 4MP-4FP
5	1	3185	Needle Valve (Swing Speed Control)
6	1	3137	Straight Adapter 4MP-6MJ
7	1	3430	90° Street Adapter 6FJX-6MJ
8	2	3103	Straight Adapter 8MBo-8MJ
9	2	30015	45° Street Adapter 8FJX-8FJX
10	1	87075	6-Spool Hidroirma Valve with Float Position on Boom Section
11	1	30184	Straight Adapter 6MBo-6MJ (With .109 Restrictor In - Free Flow Out)
12	2	3273	Coupling 8FP-8FJX
13	2	3211	Close Nipple .50" NPT
14	1	45691	Check Valve
15	2	3070	Straight Adapter 8MP-8MJ
16	1	45132	Inline Filter

VALVE ASSEMBLY

ASSEMBLY #2238

SERIAL #---15188 & UP



7858
9-7-99

VALVE ASSEMBLY

ASSEMBLY #2238

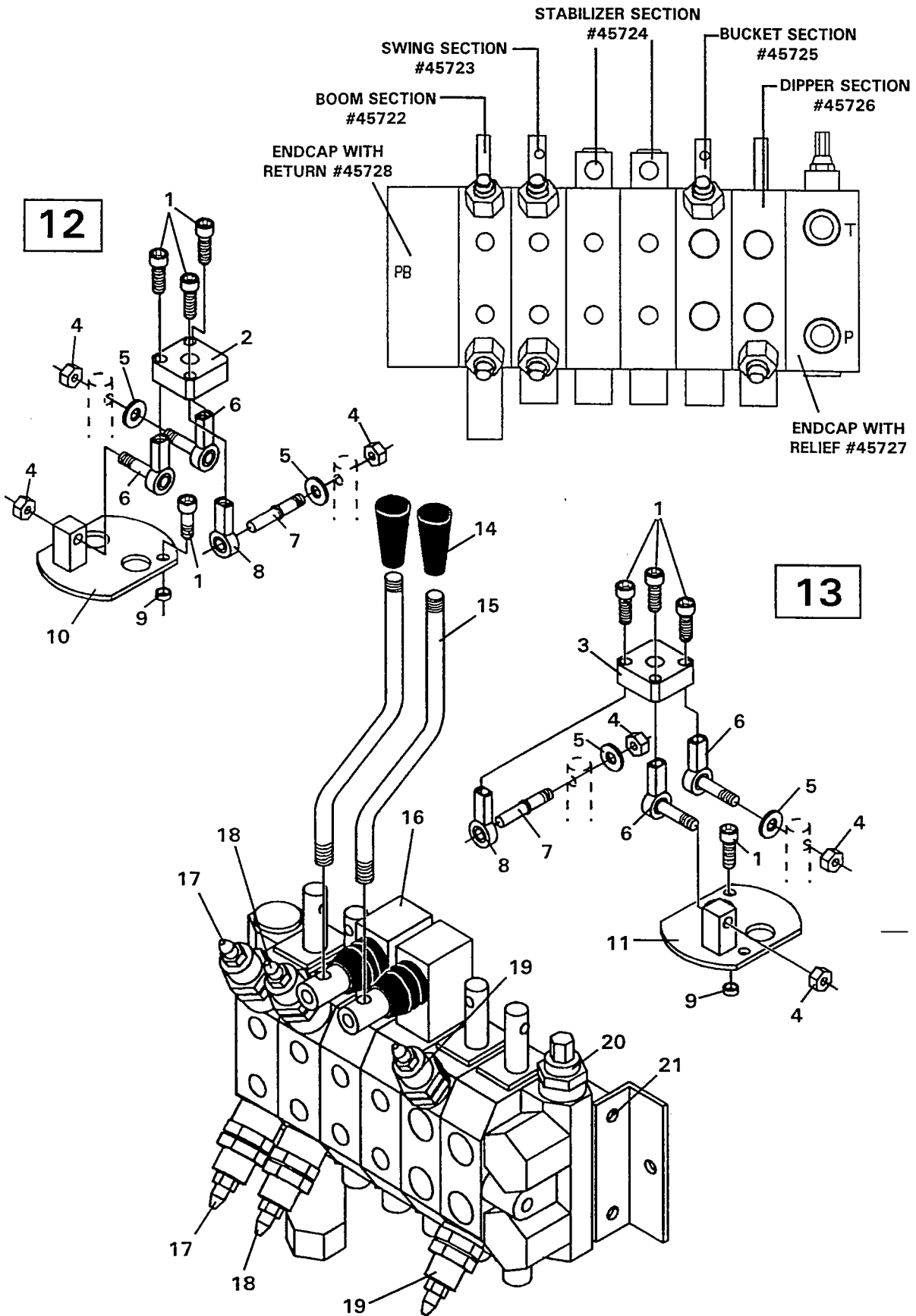
SERIAL #---15188 & UP

<u>NO</u>	<u>REQ'D</u>	<u>PART NO.</u>	<u>DESCRIPTION</u>
1	4	3269	Straight Adapter 8MBo-6MJ
2	5	3457	Straight Adapter 6MBo-6MJ
3	2	30185	Straight Adapter 6MBo-6MJ (With .076 Restrictor In - Free Flow Out)
4	1	30187	Swivel Connector 4FP-6FJX
5	1	3185	Needle Valve (Swing Speed Control)
6	1	3137	Straight Adapter 4MP-6MJ
7	1	3430	90° Street Adapter 6FJX-6MJ
8	2	3103	Straight Adapter 8MBo-8MJ
9	2	30015	45° Street Adapter 8FJX-8FJX
10	1	87075	6-Spool Hidroirma Valve with Float Position on Boom Section
11	1	30184	Straight Adapter 6MBo-6MJ (With .109 Restrictor In - Free Flow Out)
12	2	3273	Coupling 8FP-8FJX
13	2	3211	Close Nipple .50" NPT
14	1	45691	Check Valve
15	2	3070	Straight Adapter 8MP-8MJ
16	1	45132	Inline Filter

7859
9-7-99

VALVE ASSEMBLY

HIDROIRMA VALVE #87075



VALVE ASSEMBLY

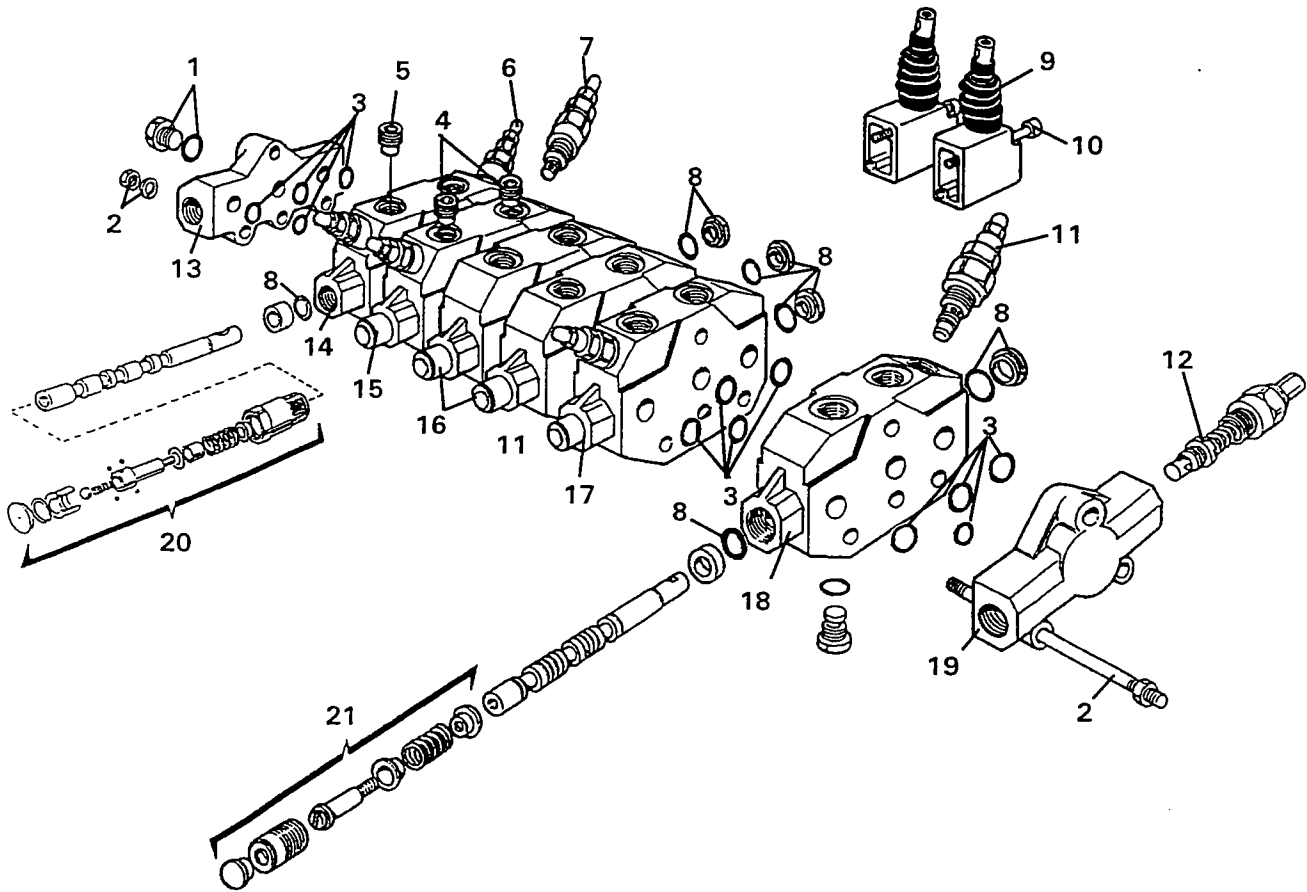
HIDROIRMA VALVE #87075

SERVICE PARTS

<u>NO</u>	<u>REQ'D</u>	<u>PART NO.</u>	<u>DESCRIPTION</u>
1	10	45702	Screw
2	1	45704	Joystick Plate - Left
3	1	45705	Joystick Plate - Right
4	6	45706	Nut
5	4	45707	Washer
6	4	45708	Terminal With Stud
7	2	45709	Joystick Spool Pin
8	2	45710	Terminal
9	4	45711	Bushing
10	1	45712	Left Joystick Support
11	1	45713	Right Joystick Support
12	-	45717	Left Joystick Assembly (Includes Items 1, 2, 4, 5, 6, 7, 8, 9, 10)
13	-	45718	Right Joystick Assembly (Includes Items 1, 3, 4, 5, 6, 7, 8, 9, 11)
14	2	86338	Knob
15	2	85837	Stabilizer Control Lever
16	-	85511	Complete Valve Assembly (Includes all Items on this Page)
17	2	45714	Circuit Relief With Anti-Cav. @ 2500 PSI
18	2	45715	Circuit Relief With Anti-Cav. @ 2250 PSI
19	2	45716	Circuit Relief @ 2500 PSI
20	1	45719	Main Relief @ 2250 PSI
21	3	45736	Tie Bolt Assembly (Includes Tie Bolt, Washer & Nut)

VALVE ASSEMBLY

REPLACEMENT PARTS - HYDROIRMA VALVE



VALVE ASSEMBLY

REPLACEMENT PARTS - HIDROIRMA VALVE

<u>NO</u>	<u>REQ'D</u>	<u>PART NO.</u>	<u>DESCRIPTION</u>
1	-	3341	Plug 8MBo
	-	3306	Replacement O'Ring
2	-	45736	Tie Rod Assembly (Includes Nuts & Washers)
3	-	45720	Section Seal Kit
4	-	45731	Restrictor .076
5	-	45732	Restrictor .109
6	-	45714	Circuit Relief With Anti-Cav. @ 2500 PSI
7	-	45715	Circuit Relief With Anti-Cav. @ 2250 PSI
8	-	45721	Spool Seal Kit
9	-	45733	Stabilizer Lever Assembly
10	-	45735	Single Slot Screw
11	-	45716	Circuit Relief @ 2500 PSI
12	-	45719	Main Relief @ 2250 PSI
13	-	45728	Endcap With Return
14	-	45722	Valve Section - Boom
15	-	45723	Valve Section - Swing
16	-	45724	Valve Section - Stabilizers
17	-	45725	Valve Section - Bucket
18	-	45726	Valve Section - Dipper
19	-	45727	Endcap With Relief
20	-	45730	Float Assembly (Spool NOT Included) (If Float Spool is damaged, it is recommended to purchase a complete Valve Section.)
21	-	45729	Positioner Assembly (Spool NOT Included) (If Positioner Spool is damaged, it is recommended to purchase a complete Valve Section.)

NOTES:

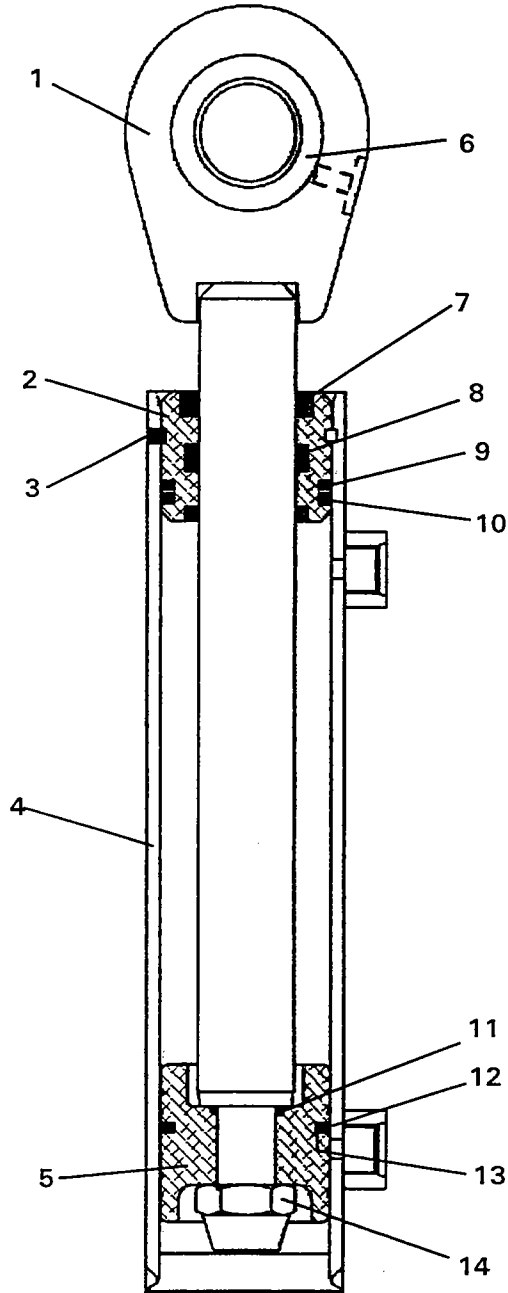
Items without part numbers are not sold separately.

Spool Seal Kit #45721 contains (2) O-Ring Seals and (1) Flanged Washer.

Section Seal Kit #45720 includes (4) O'Rings O'Ring Seals.

CYLINDER ASSEMBLY

SWING CYLINDER ASSEMBLY #86576



CYLINDER ASSEMBLY

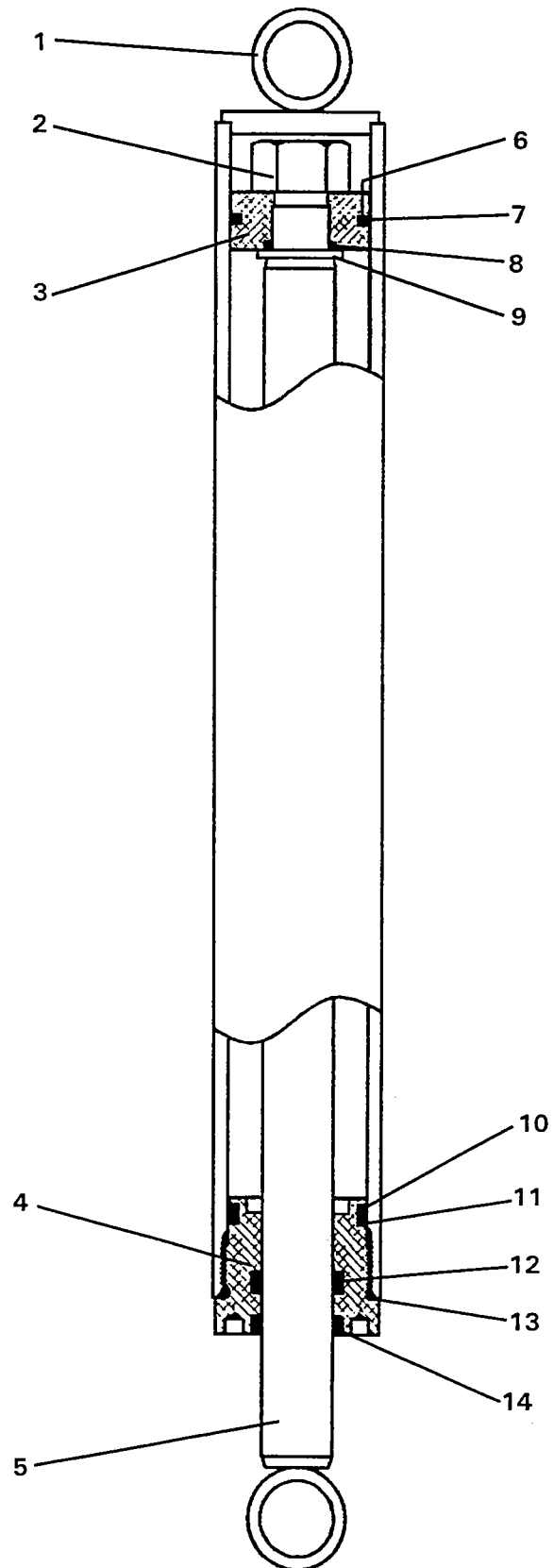
SWING CYLINDER ASSEMBLY #86576

<u>NO</u>	<u>REQ'D</u>	<u>PART NO.</u>	<u>DESCRIPTION</u>
1	1	86580	Cylinder Rod
2	1	86508	Gland
3	1	86510*	Gland Retainer Rod
4	1	86575	Cylinder Tube
5	1	86578	Piston
6	1	62523	Self Aligning Bushing
7	1	4974*	Rod Wiper
8	1	45219*	Poly Pak Seal
9	1	45700*	Back-Up Washer
10	1	45699*	O-Ring
11	1	4501*	O-Ring
12	1	45701*	Piston Ring
13	1	45443*	O-Ring
14	1	1481	.75" UNF Deformed Lock Nut

NOTE: Seal Kit #45478 includes all parts marked with an asterisk (*). Parts are not sold separately.

CYLINDER ASSEMBLY

STABILIZER CYLINDER ASSEMBLY #83397
(1.25" DIAMETER CYLINDER ROD)



CYLINDER ASSEMBLY

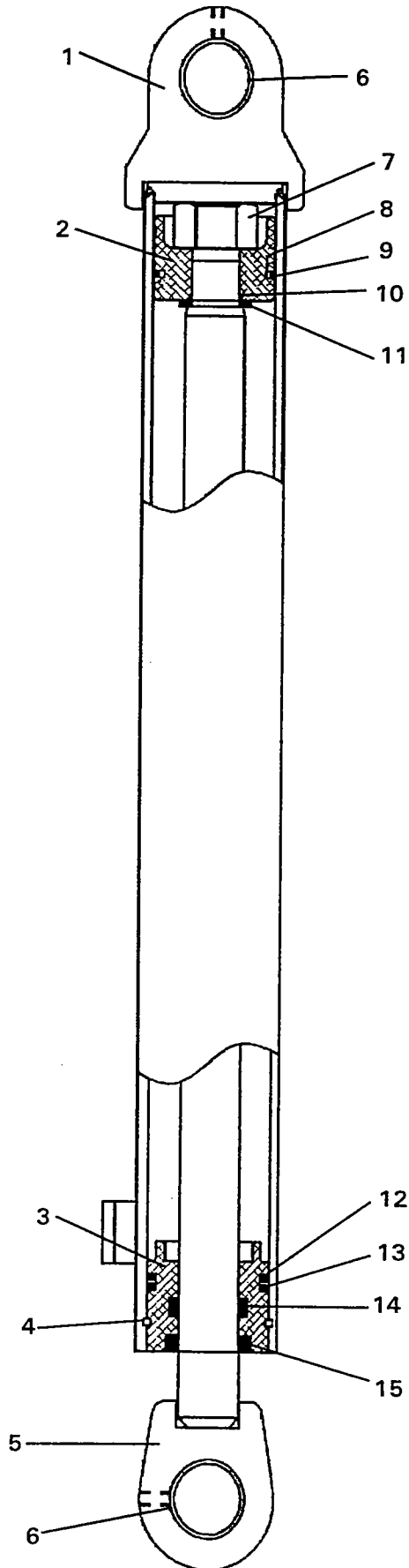
STABILIZER CYLINDER ASSEMBLY #83397
(1.25" DIAMETER CYLINDER ROD)

<u>NO</u>	<u>REQ'D</u>	<u>PART NO.</u>	<u>DESCRIPTION</u>
1	1	83398	Cylinder Tube
2	1	1483	Hex Nut
3	1	50252	Piston
4	1	77458	Cylinder Gland
5	1	83399	Cylinder Rod
6	1	4645*	O'Ring
7	1	4644*	Piston Ring
8	1	4641*	O'Ring
9	1	5421	Washer
10	1	4509*	O'Ring
11	1	4510*	Back-Up Ring
12	1	45219*	Poly Pak Seal
13	1	45250*	O'Ring
14	1	45389*	Rod Wiper

NOTE: Seal Kit #45617 includes all parts marked with an asterisk (*).
Parts are not sold separately.

CYLINDER ASSEMBLY

BOOM CYLINDER ASSEMBLY #86587



7850
9-2-99

CYLINDER ASSEMBLY

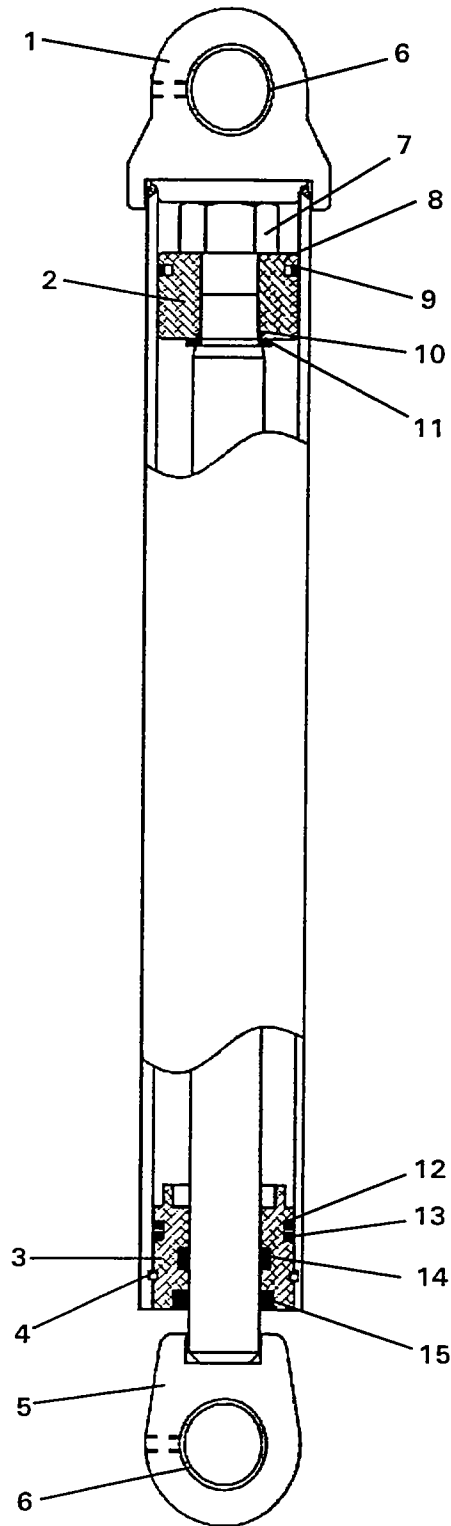
BOOM CYLINDER ASSEMBLY #86587

<u>NO</u>	<u>REQ'D</u>	<u>PART NO.</u>	<u>DESCRIPTION</u>
1	1	86591	Cylinder Tube
2	1	86586	Piston
3	1	62770	Gland
4	1	7165*	Gland Retainer Rod
5	1	86588	Cylinder Rod
6	2	85772	Bushing
7	1	1483	1.00" Deformed Hex Nut
8	1	4645*	O-Ring
9	1	4644*	Piston Ring
10	1	4641*	O-Ring
11	1	5421	Spacer
12	1	4509*	O-Ring
13	1	4510*	Back-Up Washer
14	1	45219*	Poly Pak Seal
15	1	4974*	Rod Wiper

NOTE: Seal Kit #45258 includes all parts marked with an asterisk (*). Parts are not sold separately.

CYLINDER ASSEMBLY

DIPPER CYLINDER ASSEMBLY #86561



CYLINDER ASSEMBLY

DIPPER CYLINDER ASSEMBLY #86561

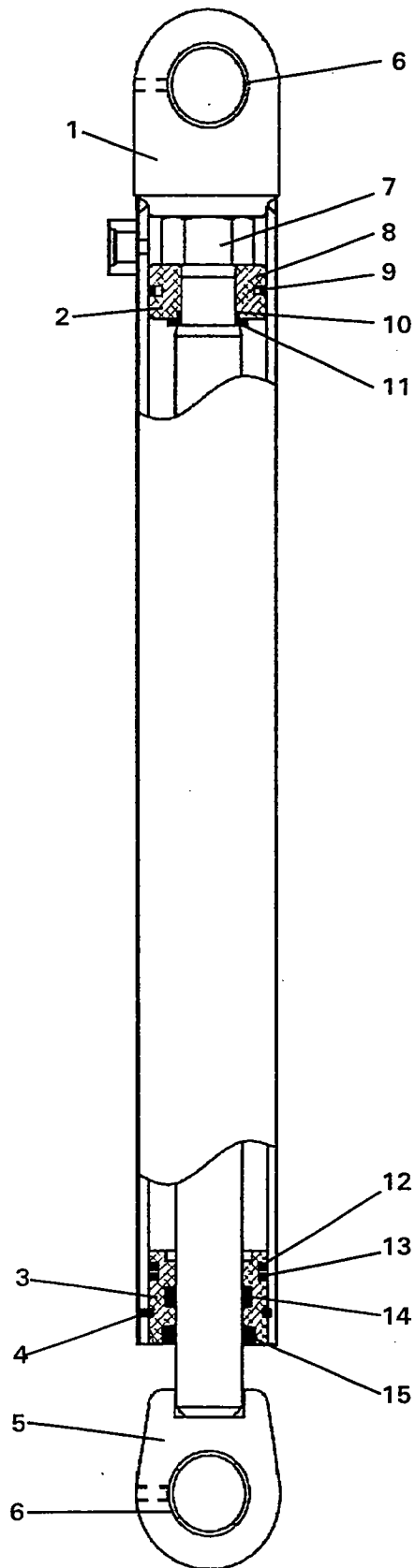
<u>NO</u>	<u>REQ'D</u>	<u>PART NO.</u>	<u>DESCRIPTION</u>
1	1	86566	Cylinder Tube
2	1	86565	Piston
3	1	62770	Gland
4	1	7165*	Gland Retainer Rod
5	1	86567	Cylinder Rod
6	2	85772	Bushing
7	1	1483	1.00" Deformed Hex Nut
8	1	4645*	O-Ring
9	1	4644*	Piston Ring
10	1	4641*	O-Ring
11	1	5421	Spacer
12	1	4509*	O-Ring
13	1	4510*	Back-Up Washer
14	1	45219*	Poly Pak Seal
15	1	4974*	Rod Wiper

**NOTE: Seal Kit #45258 includes all parts marked with an asterisk (*).
Parts are not sold separately.**

7853
9-2-99

CYLINDER ASSEMBLY

BUCKET CYLINDER ASSEMBLY #86505



7854
9-2-99

CYLINDER ASSEMBLY

BUCKET CYLINDER ASSEMBLY #86505

<u>NO</u>	<u>REQ'D</u>	<u>PART NO.</u>	<u>DESCRIPTION</u>
1	1	86506	Cylinder Tube
2	1	86509	Piston
3	1	86508	Gland
4	1	86510*	Gland Retainer Rod
5	1	86507	Cylinder Rod
6	2	85772	Bushing
7	1	1483	1.00" Deformed Hex Nut
8	1	45443*	O-Ring
9	1	45701*	Piston Ring
10	1	4641*	O-Ring
11	1	5421	Spacer
12	1	45699*	O-Ring
13	1	45700*	Back-Up Washer
14	1	45219*	Poly Pak Seal
15	1	4974*	Rod Wiper

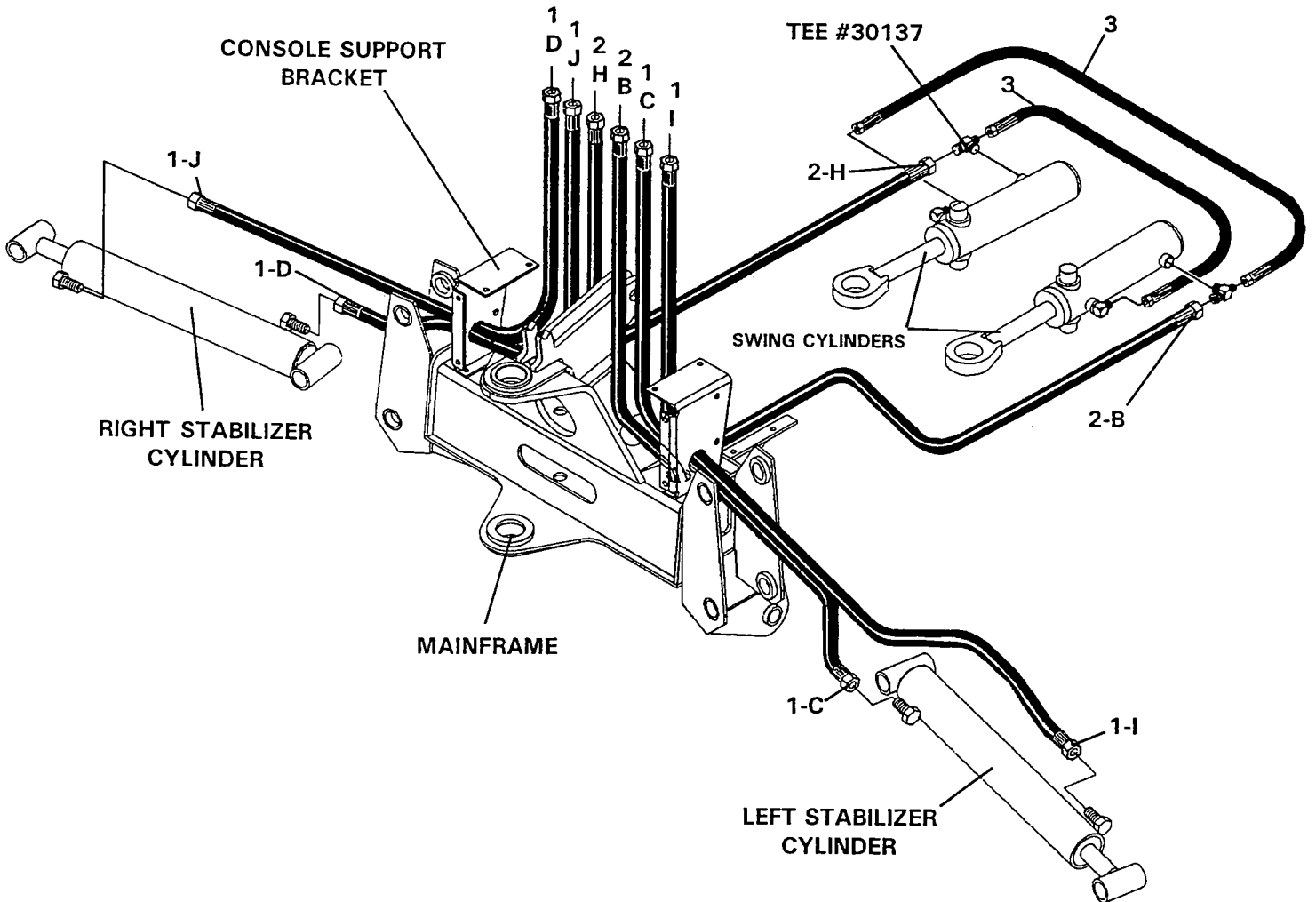
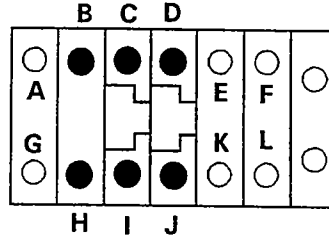
NOTE: Seal Kit #45478 includes all parts marked with an asterisk (*). Parts are not sold separately.

7855
9-2-99

MAINFRAME HOSE SET

ASSEMBLY #86643

HYDRAULIC CONTROL VALVE



MAINFRAME HOSE SET

ASSEMBLY #86643

<u>NO</u>	<u>REQ'D</u>	<u>PART NO.</u>	<u>DESCRIPTION</u>
1	4	37733	Hose .25" X 46" 6FJX - 6FJX
2	2	37731	Hose .25" X 36" 6FJX - 6FJX
3	2	37732	Hose .25" X 26" 6FJX - 6FJX

NOTE: Letters on the hose set diagram show the hydraulic hose routing between the backhoe control valve and the various hydraulic cylinders. Simply match the letter on the control valve port to the same letter on the hydraulic hose ends. Example: Hose labeled "C" runs from the upper Left Stabilizer port on the hydraulic control valve - through the console support bracket and to the barrel end fitting on the left stabilizer cylinder.

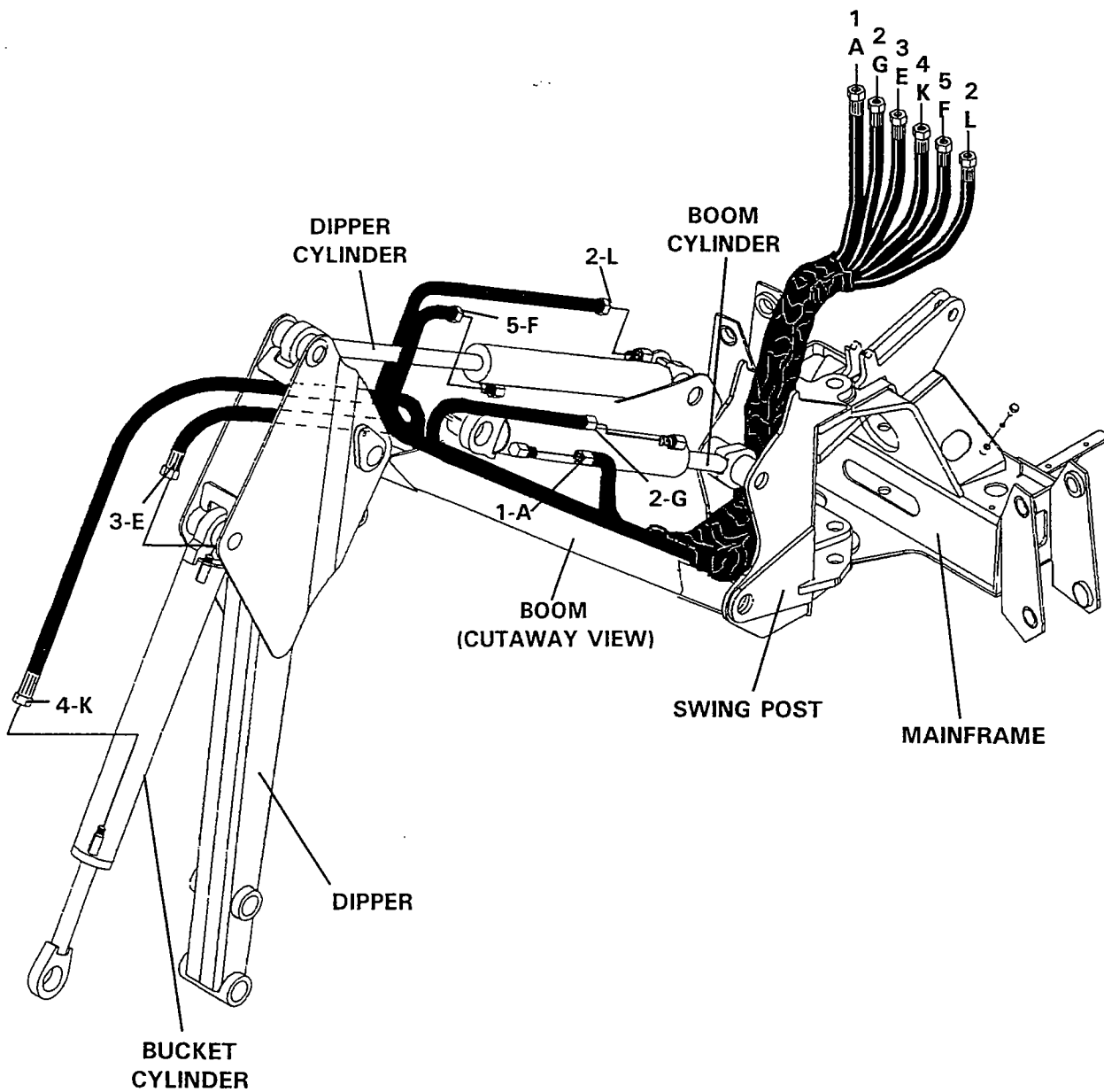
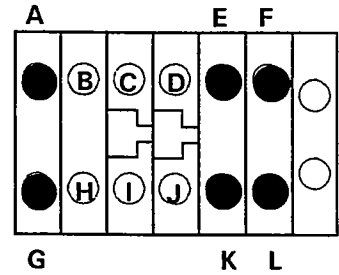
NOTE: The fittings on the hydraulic cylinders have been altered for clarity purposes. This will assist you in distinguishing between the rod end and the barrel end of the various hydraulic cylinders.

7861
9-8-99

BOOM & DIPPER HOSE SET

ASSEMBLY #86644

HYDRAULIC CONTROL VALVE



BOOM & DIPPER HOSE SET

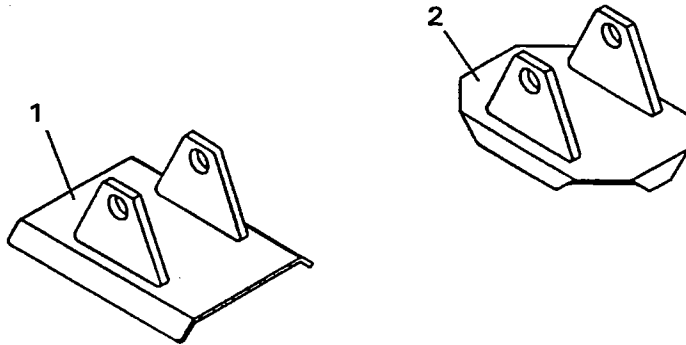
ASSEMBLY #86644

<u>NO</u>	<u>REQ'D</u>	<u>PART NO.</u>	<u>DESCRIPTION</u>
1	1	37726	Hose .25" X 79" 6FJX - 6FJX
2	2	37727	Hose .25" X 115" 6FJX - 6FJX
3	1	37729	Hose .25" X 121" 6FJX - 6FJX
4	1	37730	Hose .25" X 135" 6FJX - 6FJX
5	1	37728	Hose .25" X 101" 6FJX - 6FJX

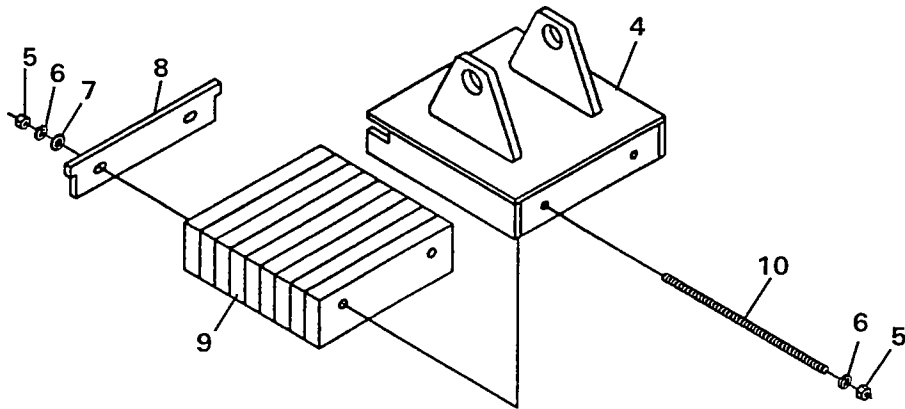
NOTE: Letters on the hose set diagram show the hydraulic hose routing between the backhoe control valve and the various hydraulic cylinders. Simply match the letter on the control valve port to the same letter on the hydraulic hose ends. Example: Hose labeled "G" runs from the lower Boom port on the hydraulic control valve - through the swing post (hose sock) and to the rod end fitting on the boom cylinder.

NOTE: The fittings on the hydraulic cylinders have been altered for clarity purposes. This will assist you in distinguishing between the rod end and the barrel end of the various hydraulic cylinders.

STABILIZER PADS



3

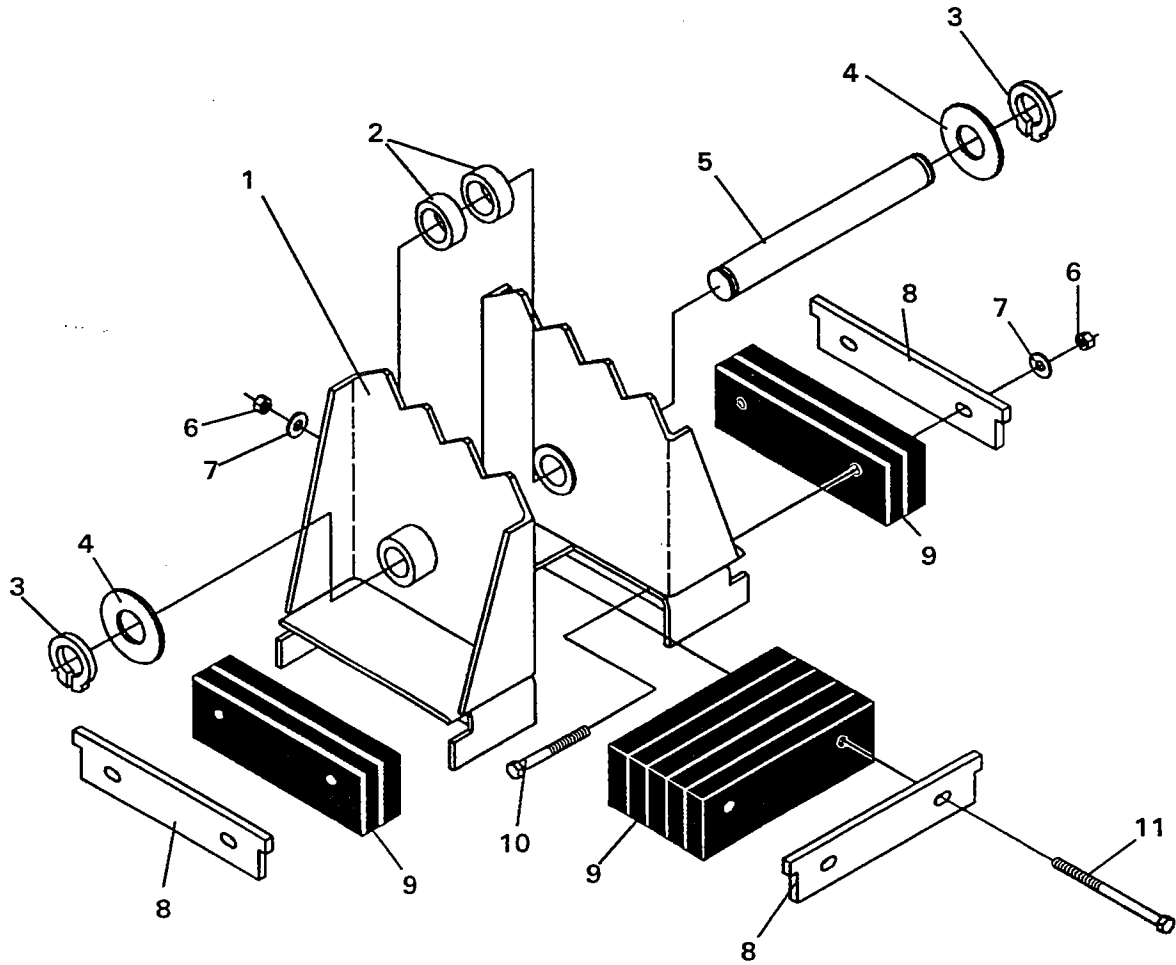


STABILIZER PADS

<u>NO</u>	<u>REQ'D</u>	<u>PART NO.</u>	<u>DESCRIPTION</u>
FLAT STABILIZER PAD ASSEMBLY - #81861			
1	2	81865	Flat Stabilizer Pad
GROUSER STABILIZER PAD ASSEMBLY - #81860			
2	2	83421	Grouser Stabilizer Pad
RUBBER STABILIZER PAD ASSEMBLY - #81862			
3	2	83418	Rubber Stabilizer Pad Assembly (Includes Items 4 through 10)
4	1	83419	Stabilizer Pad
5	4	1226	.38" UNC Hex Nut
6	4	1503	.38" Lock Washer
7	2	1514	.38" Flat Washer
8	1	51190	Slide Plate
9	1	64412	Rubber Strip Bundle
10	2	1661	.38" UNC X 11.50" Readi Bolt

STABILIZER PADS

FLIP-OVER STABILIZER PAD ASSEMBLY #83091
(COMPLETE SET OF (2) FLIP-OVER PADS - ASSEMBLY #83058)



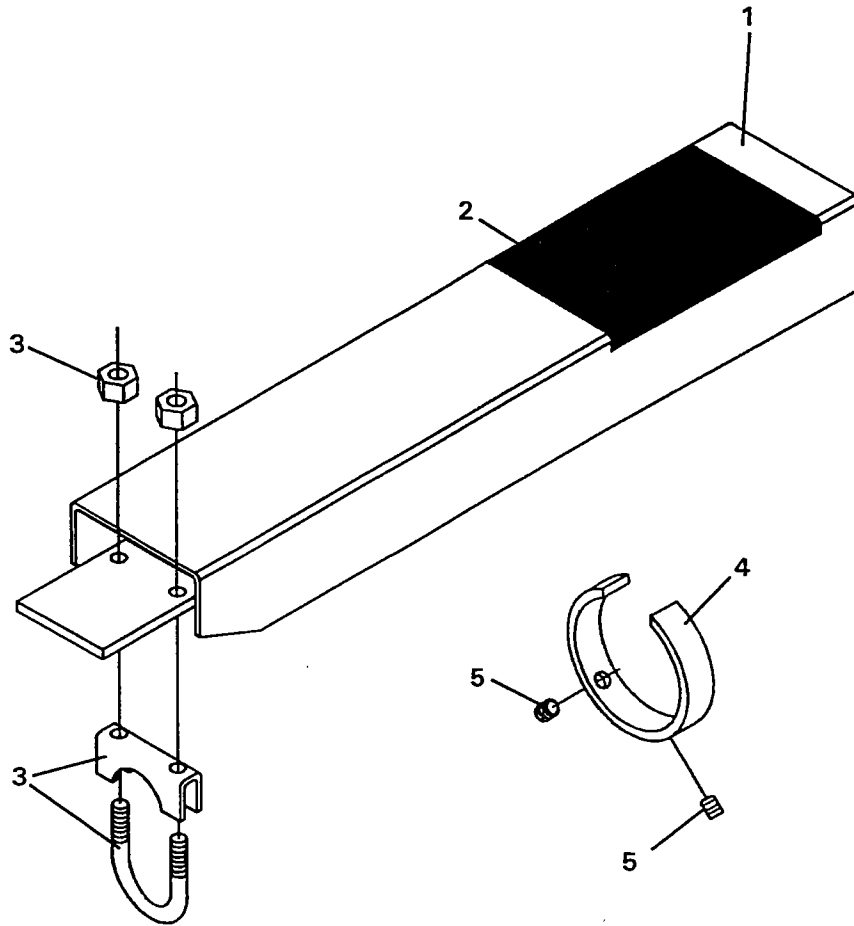
STABILIZER PADS

FLIP-OVER STABILIZER PAD ASSEMBLY #83091
(COMPLETE SET OF (2) FLIP-OVER PADS - ASSEMBLY #83058)

<u>NO</u>	<u>REQ'D</u>	<u>PART NO.</u>	<u>DESCRIPTION</u>
1	1	84496	Flip-Over Pad
2	2	84495	Spacer
3	2	1652	1.25" Snap Ring
4	VARIES	57693	Thrust Washer 1.25" X .078"
	VARIES	64727	Thrust Washer 1.25" X .125"
5	1	83096	Pin
6	6	1837	.38" UNC Hex Deformed Lock Nut
7	6	1514	.38" Flat Washer
8	3	51190	Slide Plate
9	1	64412	Rubber Strip Bundle
10	4	1053	.38" UNC X 3.50" Hex Capscrew
11	2	1057	.38" UNC X 5.00" Hex Capscrew

OPTIONAL STABILIZER CYLINDER COVER

STABILIZER CYLINDER COVER ASSEMBLY #83850

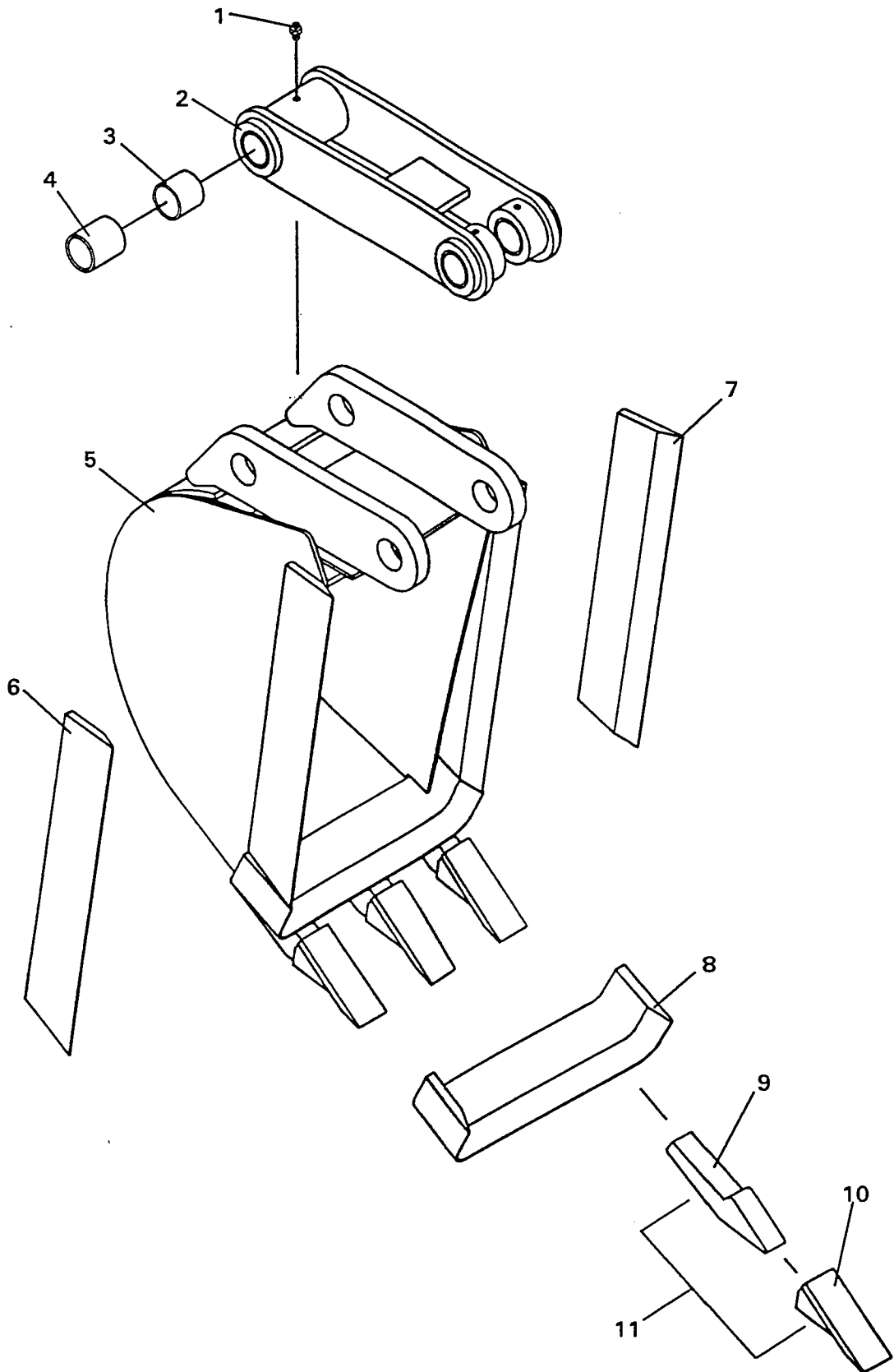


OPTIONAL STABILIZER CYLINDER COVER

STABILIZER CYLINDER COVER ASSEMBLY #83850

<u>NO</u>	<u>REQ'D</u>	<u>PART NO.</u>	<u>DESCRIPTION</u>
1	2	83915	Stabilizer Cylinder Cover with Decal
2	2	4167	No Step Decal
3	2	83910	1.25" Clamp Assembly
4	2	83911	Guide Ring
5	4	1575	.38" UNC X .50" Set Screw

BUCKET ASSEMBLIES



6735
12-12-95

BUCKET ASSEMBLIES

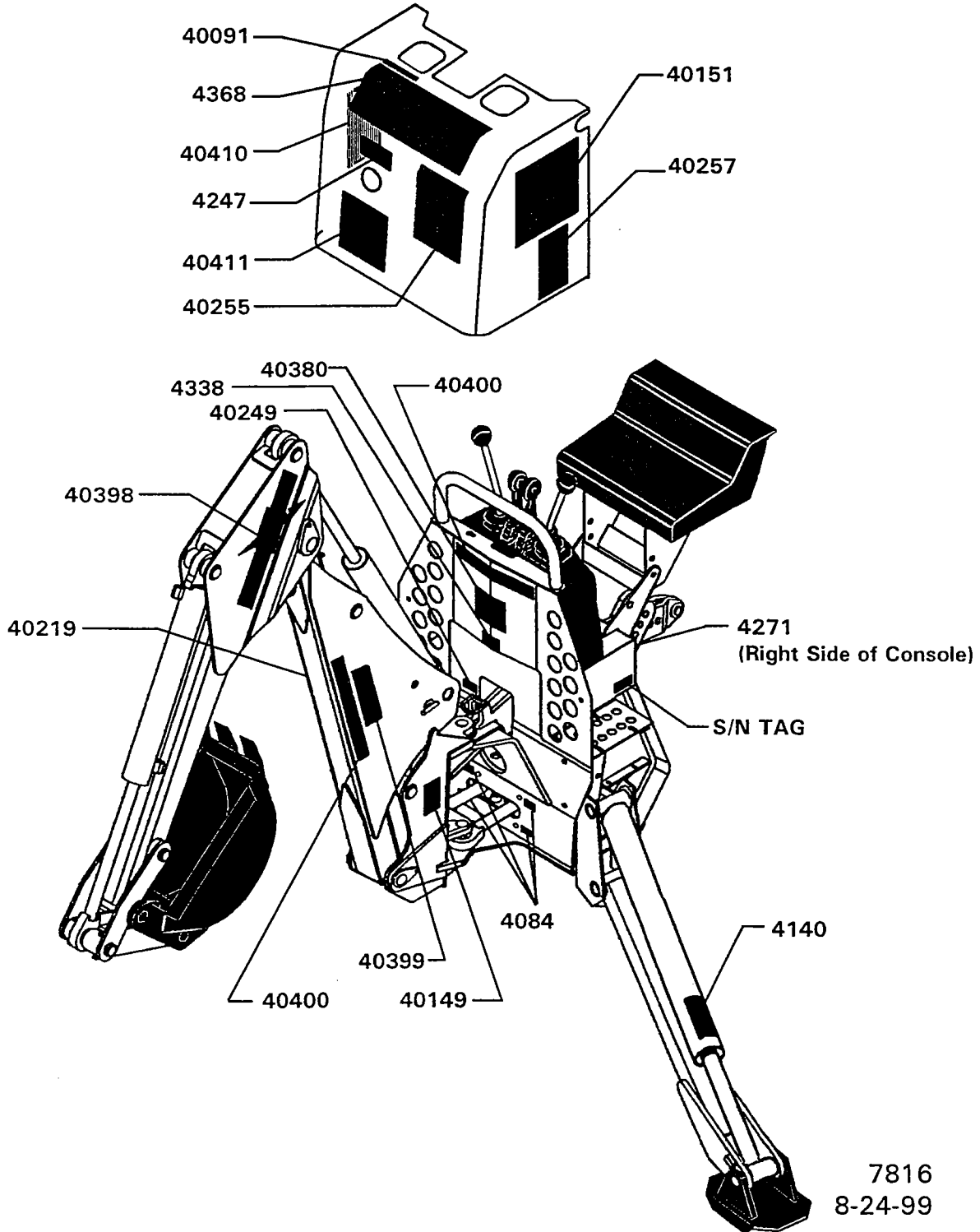
<u>NO</u>	<u>PART NO.</u>	<u>DESCRIPTION</u>
1	6616	Replacement Grease Zerk
2	81824	Replacement Bucket Link (Requires (3) #6616 Grease Zerks, (4) #81610 Bushings, (1) #83368 Spacer)
3	83368	Replacement Spacer
4	81610	Replacement Bushing
5	81710	10" Bucket Weldment
	81712	12" Bucket Weldment
	81716	16" Bucket Weldment
	81718	18" Bucket Weldment
	81724	24" Bucket Weldment
6	81667	Replacement Right Side Cutter
7	81668	Replacement Left Side Cutter
8	81906	10" Replacement Front Cutter Edge
	81902	12" Replacement Front Cutter Edge
	81898	16" Replacement Front Cutter Edge
	81894	18" Replacement Front Cutter Edge
	81666	24" Replacement Front Cutter Edge
9	6398	Replacement Tooth Shank
10	6397	Replace Tooth Point
11	8274	Replacement Tooth Point & Shank

DECALS

DECAL PLACEMENT

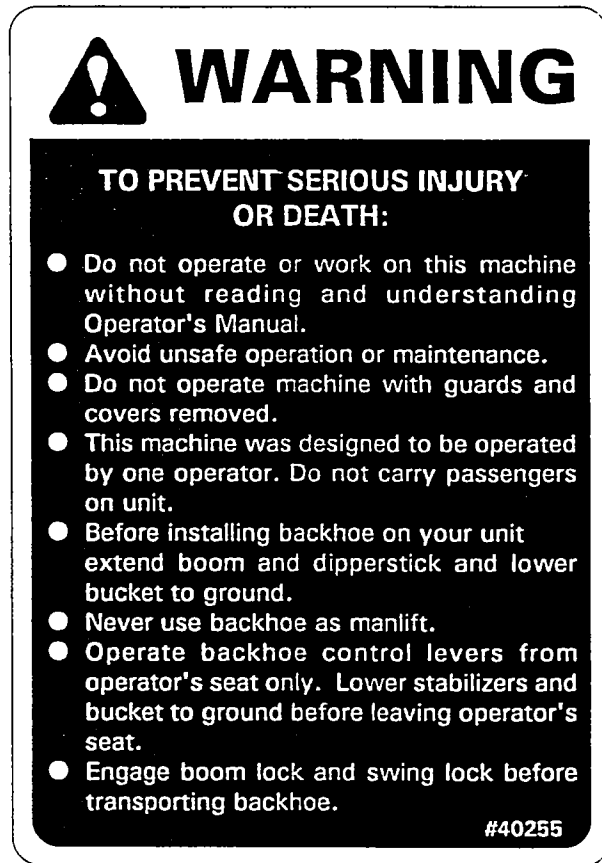
GENERAL INFORMATION

The diagrams on this page show the location of all the decals used on the 3375 backhoe. The decals are identified by their part numbers, with reductions of the actual decals located on the following pages. Use this information to order replacements for lost or damaged decals. Be sure to read all decals before operating the backhoe. They contain information you need to know for both safety and backhoe longevity.

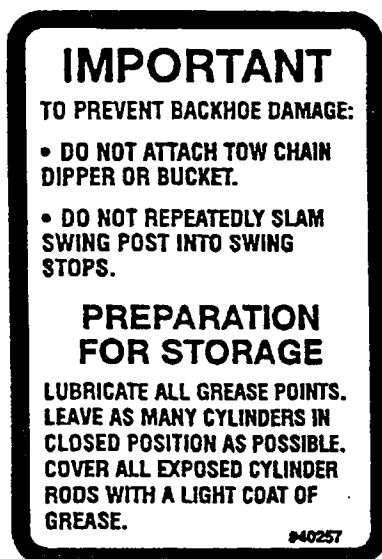




PART #40151
HIGH PRESSURE FLUID DECAL



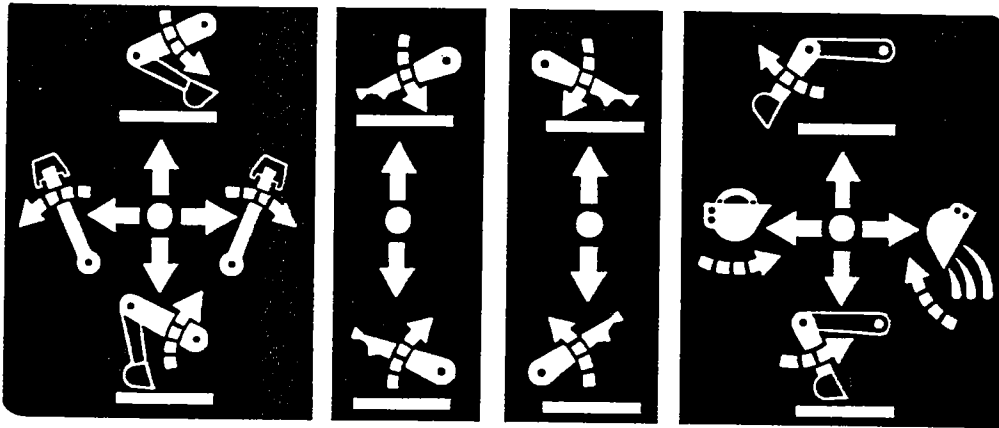
PART #40255
OPERATIONAL WARNING DECAL



PART #40257
IMPORTANT! DECAL



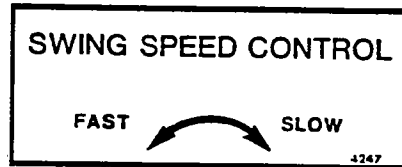
PART #40149
DANGER! PINCH POINTS



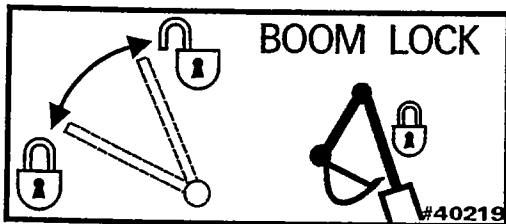
PART #4368
OPERATING CONTROLS DECAL



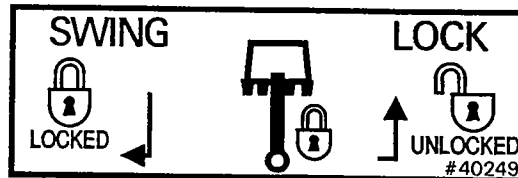
PART #40091
FLOAT DECAL



PART #4247
SWING SPEED CONTROL DECAL



PART #40219
BOOM LOCK DECAL



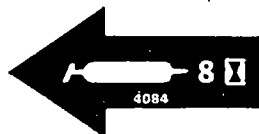
PART #40249
SWING LOCK DECAL

IMPORTANT

The backhoe bucket is capable of contacting this stabilizer and/or cylinder. Carefull operation will avoid backhoe damage.

4140

PART #4140
BUCKET CONTACT WARNING DECAL



PART #4084
GREASE 8 HOURS



PART #4338
MADE IN U.S.A. DECAL

! CAUTION

BACKHOE AND THREE POINT LIMITATIONS

For Use On Compact Tractors:
25 - 50 Horsepower.
800 - 3800 Rated Hitch Lift Capacity.
Up To 5000 Lbs. GVW.

Mounting This Backhoe On Larger Tractors May Result In Serious Damage To The Backhoe And Void Warranties.

Sustained Heavy Use Of Backhoe May Result In Damage To The Tractor.

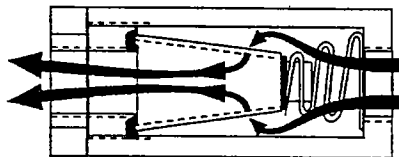
#40380

**PART #40380
CAUTION! BACKHOE LIMITATIONS**

SERVICE INFORMATION

#4271

THIS IS AN INLINE 90 MICRON SINTERED BRONZE FILTER. IF PLUGGED OR PARTIALLY FILLED IT WILL REDUCE BACKHOE PERFORMANCE. REMOVE AND WASH OUT REGULARLY. REPLACE ELEMENT #46133 IF DIFFICULT TO BLOW THROUGH AFTER WASHING. SEE FULL INSTRUCTIONS IN OWNERS MANUAL.



**PART #4271
INLINE FILTER DECAL**

IMPORTANT NOTICE REGARDING 3-POINT HITCH BACKHOES.

BRADCO MAKES NO CLAIMS OR WARRANTY, IMPLIED OR OTHERWISE, as to the compatibility or structural integrity of any tractors 3-point hitch assembly or components when used with any BRADCO 3-point hitch type backhoe. Since many models of tractors have standard category hitches and backhoes have standard category attaching points, it is possible to mount tractor or backhoe combinations that are not compatible.

DEALERS AND/OR OWNERS MUST DETERMINE THAT COMPATIBILITY BETWEEN THE TRACTOR AND BACKHOE EXISTS.

Compatibility includes, but is not limited to items such as operator clearance, hitch component strength, tractor case strength and hydraulics.

Suggestions given as to hitch categories and horsepower ranges used with various models of backhoes are suggestions only and not recommendations as to suitability of any combination of tractors and backhoes.

BRADCO also manufactures solid 4-point mounting kits for many models of tractors. These kits do NOT mount to the 3-point hitch. If in doubt about your hitch compatibility, solid 4-point mounting type kit and backhoe should be used.

#40410

**PART #40410
IMPORTANT NOTICE**

BRADCO

PART #40400
BRADCO LOGO - WHITE/RED

3375

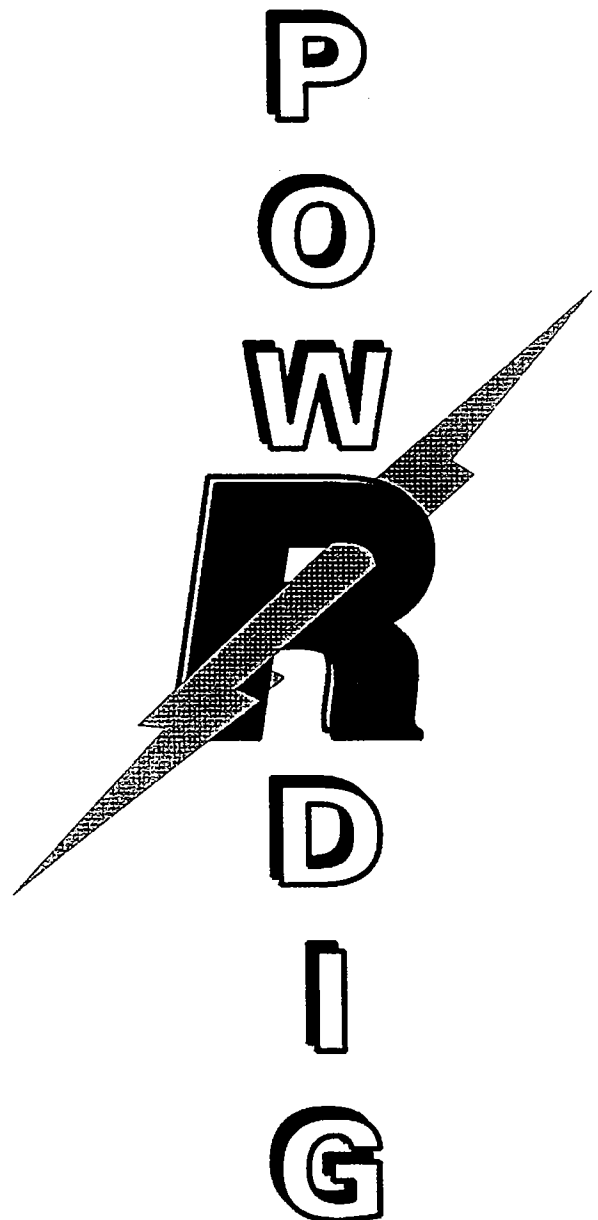
PART #40399
3375 MODEL NUMBER

⚠ WARNING

TO AVOID SERIOUS INJURY OR DEATH.

- Use **ONLY** on Category I tractors.
- Do not use 3-point quick attaching coupler to mount backhoe on tractor.
- Minimum of 20% of tractor and equipment weight must be on the tractor front wheels with the backhoe in the transport position.
- Operate PTO at 540 RPM (if so equipped).
- Backhoe digging forces can lift and turn tractor over. Make sure stabilizer pads are on firm ground and avoid steep banks.
- Do not exceed ROPS certification weight.
- Consult local utilities before digging. Know location of and avoid contacting all underground cables, pipelines, overhead wires and other hazards in digging area. #40411

PART #40411
WARNING!



PART #40398
POW-R-DIG LOGO

