



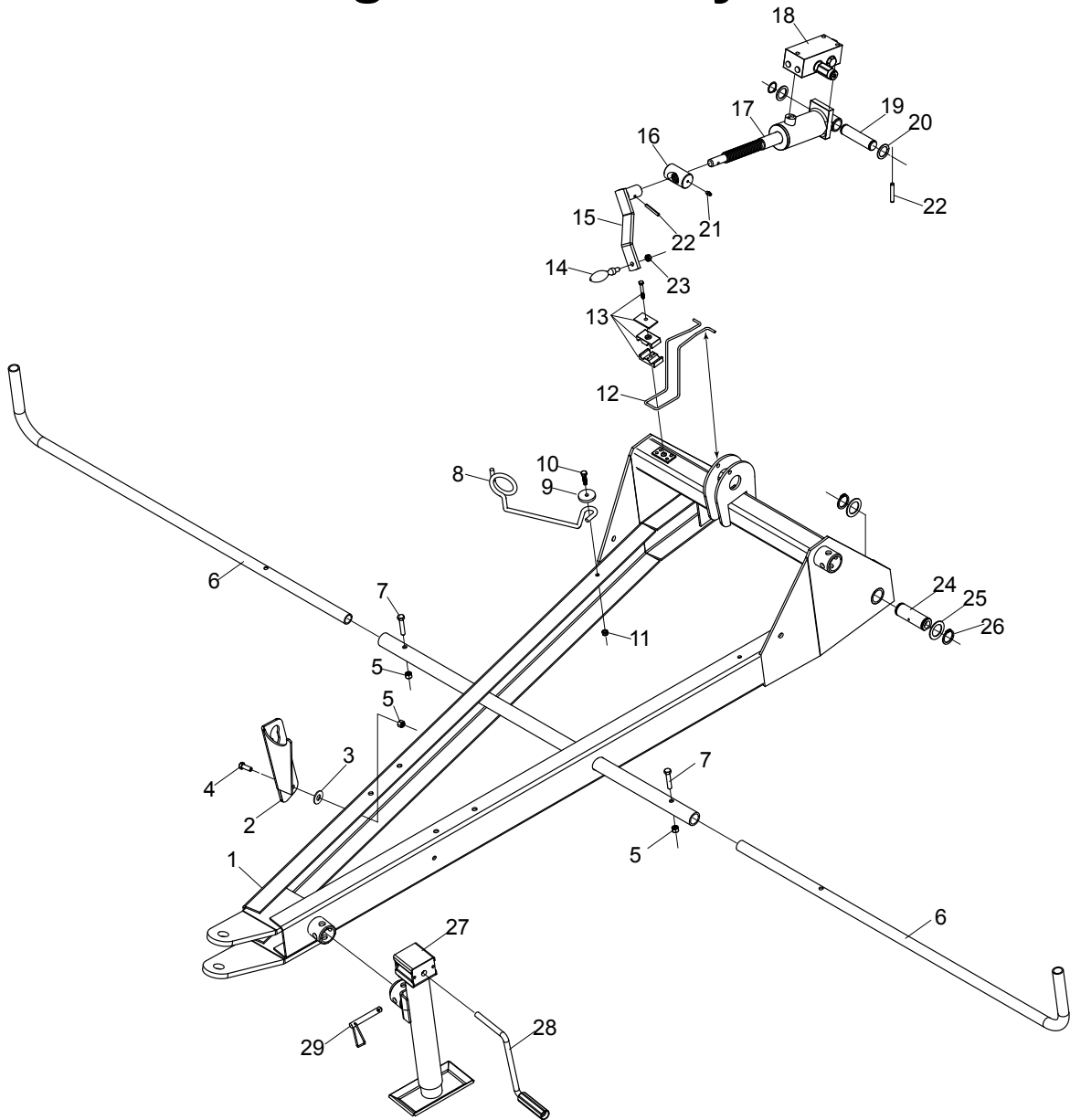
# TT4100 Rotary Tedder

Serial numbers 88750 and higher

## Illustrated Parts Breakdown

- Page 1 Tongue Assembly S/N -91552
- Page 2 Tongue Assembly S/N 91552 to 92935
- Page 3 Tongue Assembly S/N 92935 to 94344
- Page 4 Tongue Assembly S/N 94344+
- Page 5 Main Frame S/N -94344
- Page 6 Main Frame S/N 94344 to 94416
- Page 7 Main Frame S/N 94417+
- Page 8 Rotor and Wing Assembly
- Page 9 Axle and Wheel
- Page 10 Input Gearbox Assembly
- Page 11 Rotor Gearbox Assembly
- Page 12 PTO Shaft Assembly
- Page 13 Hydraulics -94344
- Page 14 Hydraulics 94344+
- Page 15 Decals

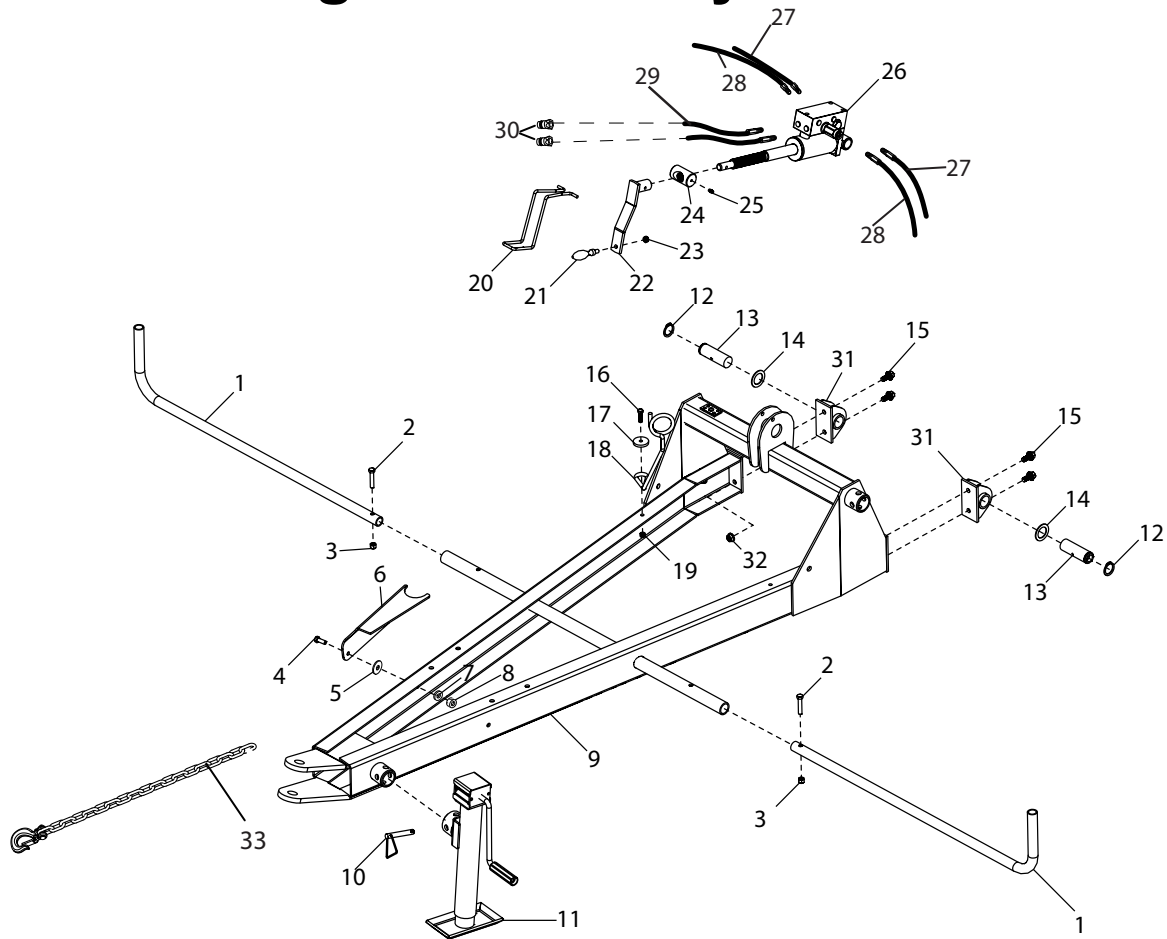
# TT4100 Tongue Assembly S/N -91552



Ref#	Description	Part#	Qty
1	Tongue Assembly	702796	1
2	PTO Stand	500015	1
3	Washer, 3/8	001035	1
4	Bolt, 3/8 x 1	000270	1
5	Nylon Locknut, 3/8	003000	3
6	Guard	702755	2
7	Bolt, 3/8 x 1-1/2	000286	2
8	Hose Support	502288	1
9	Hose Support Washer	502308	1
10	Bolt, 5/16 x 1-1/4	000230	1
11	Nylon Locknut, 5/16	002999	1
12	Handle Lock	702713	1
13	Hose Holding Kit	507294	1
14	Handle	502149	1
15	Handle Assembly	503037	1

Ref#	Description	Part#	Qty
16	Cylinder Mount	502218	1
17	Cylinder w/ Manifold	701033	1
18	Manifold	701000	1
19	Cylinder Pin	701021	1
20	Machinery Bushing, 1"	001008	2
21	Grease Fitting	400117	3
22	Roll Pin, 1/4 x 1-3/4	500187	3
23	Nylon Jam Nut, 3/8	000920	1
24	Tongue Pivot Pin	702829	2
25	Machinery Bushing, 1-1/4	500185	4
26	Retaining Ring	702826	4
27	Jack, Complete	903317	1
28	Jack Handle	903318	1
29	Pin and Chain	500012	1

# TT4100 Tongue Assembly S/N 91552 - 92935

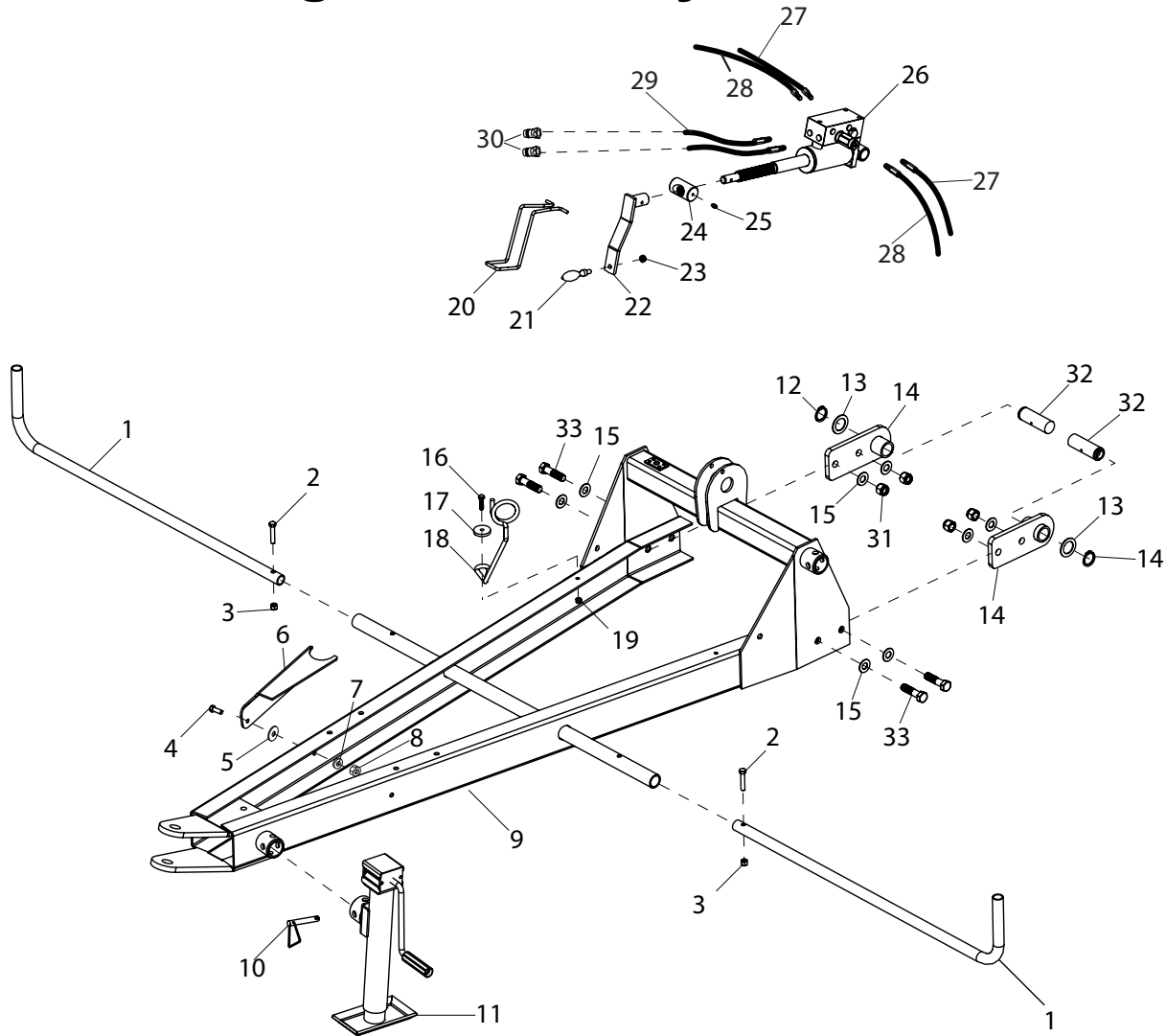


Ref#	Description	Part#
1	Front Guard	702755
2	3/8" x 2" HH Bolt	000286
3	3/8" Nylon Lock Nut	003000
4	Bolt, 3/8 x 1	000270
5	3/8" Fender Washer	001100
6	PTO Stand	500015
7	3/8" Lock Washer	000820
8	3/8" Nut	000915
9	Tongue Weldment	703105
10	Jack Mount Pin	500012
11	2K Side Wind Jack	903317
12	External Retaining Ring, 1.25	702826
13	Tongue Pivot Pin	702829
14	Machinery Bushing, 1.25	500185
15	7/16" x 1" Serrated Flange Bolt	000724

\* Top or side wind jacks fit on same mounting stub

Ref#	Description	Part#
16	Hex Nut, 3/8	000915
17	Bolt, 5/16 x 1-1/4	000230
18	Heavy Washer	502308
19	Lock Nut, 5/16	002999
20	Cylinder Handle Lock	702713
21	Stainless Steel Handle	502149
22	Front Cyl. Handle Weldment	503037
23	3/8" Nylon Jam Nut	000920
24	Threaded Cylinder Mount	502218
25	1/4" Grease Fitting	400117
26	Front Tilt Cylinder and Manifold	701033
27	Short Cylinder Hose	701037
28	Long Cylinder Hose	701038
29	Tractor Hose	701039
30	Male Hydraulic Coupler	290105
31	Hitch Bolting Assembly	703111

# TT4100 Tongue Assembly S/N 92935 - 94344

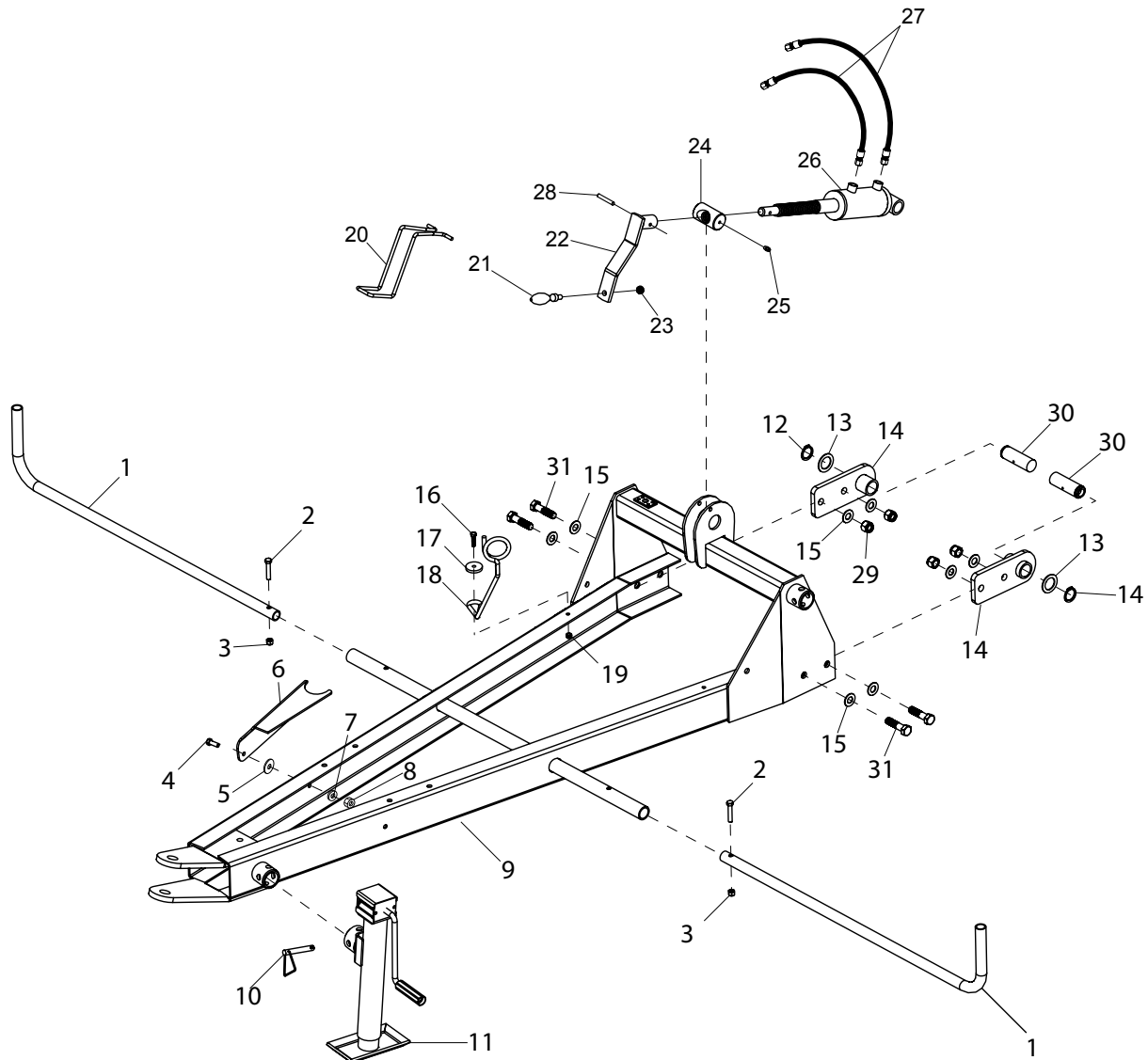


Ref#	Description	Part#
1	Front Guard	702755
2	3/8" x 2" HH Bolt	000286
3	3/8" Nylon Lock Nut	003000
4	Bolt, 3/8 x 1	000270
5	3/8" Fender Washer	001100
6	PTO Stand	500015
7	3/8" Lock Washer	000820
8	3/8" Nut	000915
9	Tongue Weldment	703509
10	Jack Mount Pin	500012
11	2K Side Wind Jack	903317

Ref#	Description	Part#
12	Ext Retaining Ring, 1-1/4 Zinc	702826
13	1-1/4 x 1-7/8 Bushing, 14 Ga.	500185
14	Hitch Bolting Weld Assembly	703484
15	5/8 SAE Flat Washer Zinc	001076
16	Hex Nut, 3/8	000915
17	Bolt, 5/16 x 1-1/4	000230
18	Heavy Washer	502308
19	Lock Nut, 5/16	002999
20	Cylinder Handle Lock	702713
21	Stainless Steel Handle	502149
22	Front Cyl. Handle Weldment	503037
23	3/8" Nylon Jam Nut	000920
24	Threaded Cylinder Mount	502218
25	1/4" Grease Fitting	400117
26	Front Tilt Cylinder and Manifold	701033
27	Short Cylinder Hose	701037
28	Long Cylinder Hose	701038
29	Tractor Hose	701039
30	Male Hydraulic Coupler	290105
31	5/8-11 Nylon Lock Nut, Gr.5 Zinc	000972
32	Tongue Pivot Pin	702829
33	5/8-11 x 2 Hex Head Bolt	000615

\* Top or side wind jacks fit on same mounting stub

# TT4100 Tongue Assembly S/N 94344+



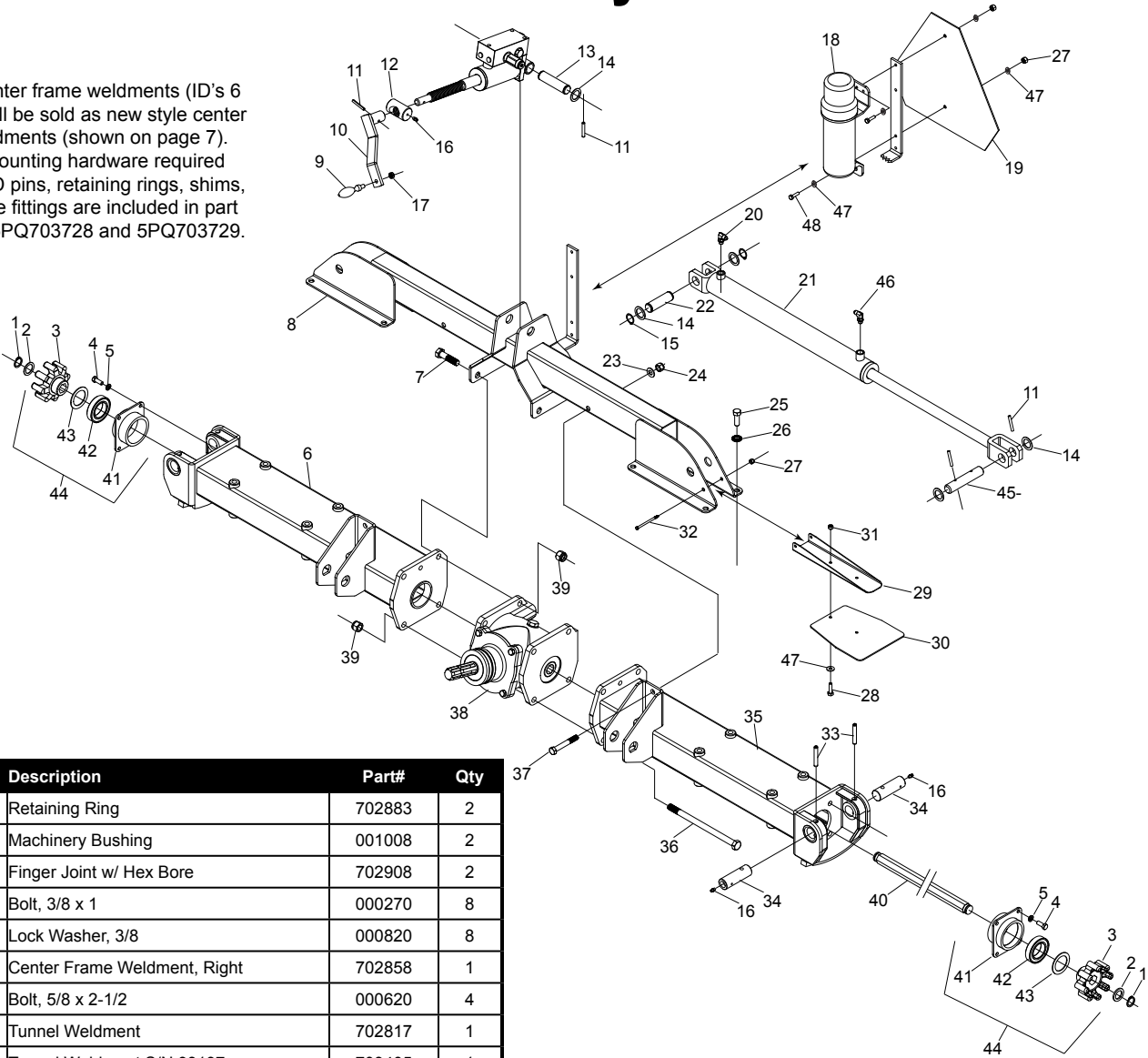
Ref#	Description	Part#
1	Front Guard	702755
2	3/8" x 2" HH Bolt	000286
3	3/8" Nylon Lock Nut	003000
4	Bolt, 3/8 x 1	000270
5	3/8" Fender Washer	001100
6	PTO Stand	500015
7	3/8" Lock Washer	000820
8	3/8" Nut	000915
9	Tongue Weldment	703509
10	Jack Mount Pin	500012
11	2K Side Wind Jack	903317

\* Top or side wind jacks fit on same mounting stub

Ref#	Description	Part#
16	Hex Nut, 3/8	000915
17	Bolt, 5/16 x 1-1/4	000230
18	Heavy Washer	502308
19	Lock Nut, 5/16	002999
20	Cylinder Handle Lock	702713
21	Stainless Steel Handle	502149
22	Front Cyl. Handle Weldment	503037
23	3/8" Nylon Jam Nut	000920
24	Threaded Cylinder Mount	502218
25	1/4" Grease Fitting	400117
26	Front Tilt Cylinder	703604
27	1/4" x 15-1/2" Hose Assembly	703379
28	1/4" x 1-3/4" Roll Pin	500187
29	5/8-11 Nylon Lock Nut, Gr.5 Zinc	000972
30	Tongue Pivot Pin	702829
31	5/8-11 x 2 Hex Head Bolt	000615

# Main Assembly S/N -94344

\*Note: Center frame weldments (ID's 6 and 35) will be sold as new style center frame weldments (shown on page 7). All pivot mounting hardware required including D pins, retaining rings, shims, and grease fittings are included in part numbers 5PQ703728 and 5PQ703729.

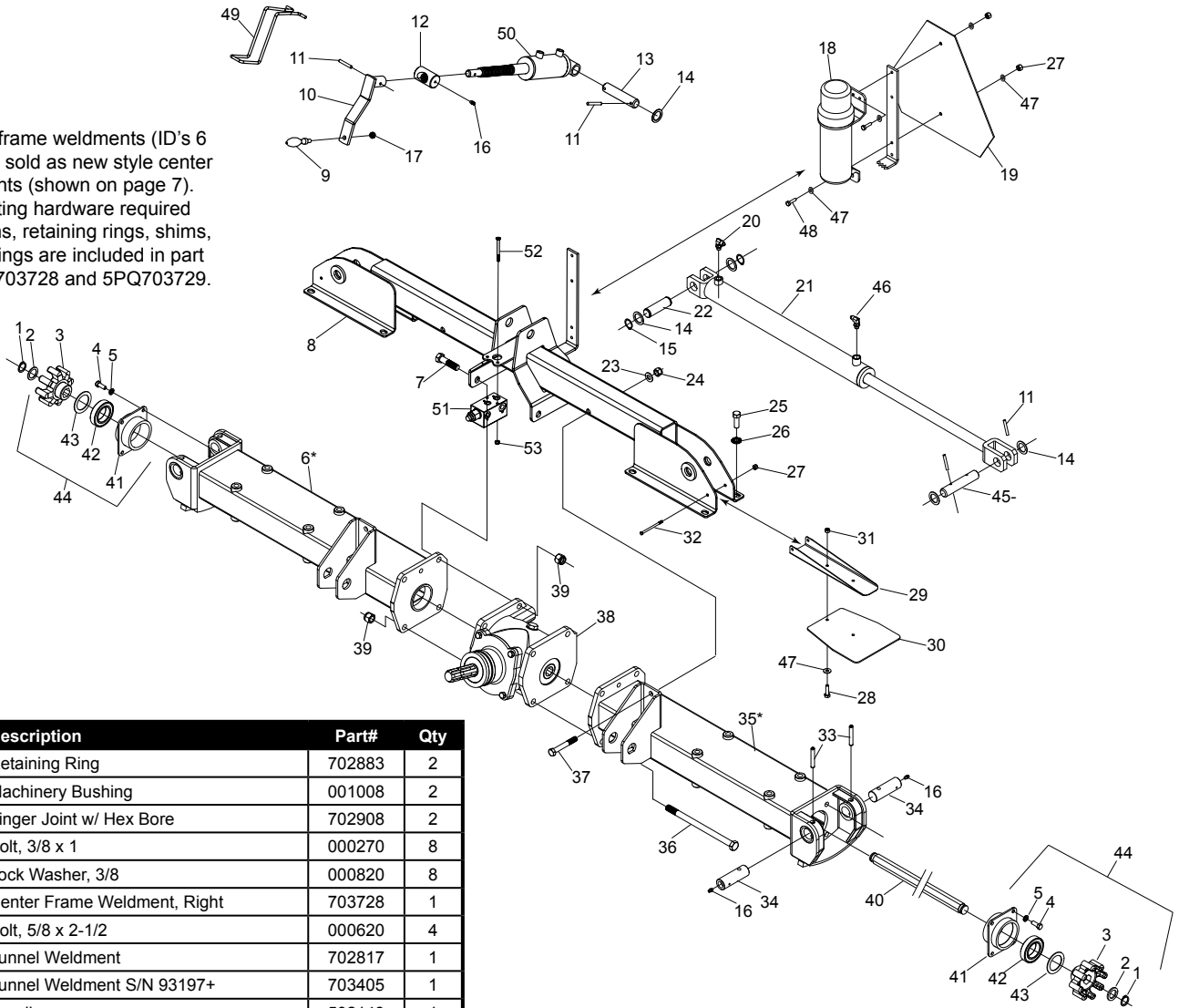


Ref#	Description	Part#	Qty
1	Retaining Ring	702883	2
2	Machinery Bushing	001008	2
3	Finger Joint w/ Hex Bore	702908	2
4	Bolt, 3/8 x 1	000270	8
5	Lock Washer, 3/8	000820	8
6	Center Frame Weldment, Right	702858	1
7	Bolt, 5/8 x 2-1/2	000620	4
8a	Tunnel Weldment	702817	1
8b	Tunnel Weldment S/N 93197+	703405	1
9	Handle	502149	1
10	Handle Assembly	503037	1
11	Roll Pin, 1/4 x 1-3/4	500187	5
12	Threaded Cylinder Pin	502218	1
13	Front Tilt Cylinder Pin	701021	1
14	Machinery Bushing, 1"	001008	6
15	Retaining Ring, 1"	505648	4
16	Grease Fitting	400117	5
17	Nylon Jam Nut, 3/8	000920	1
18	OM Canister	503050	1
	Operator's Manual, TT4100	990039	1
19	SMV Triangle	507166	1
20	90 Degree Elbow, - #4 MJ x #4 MP	702459	2
21	Cylinder	701040	2
22	Cylinder Pin	701021	2
23	Washer	001061	2
24	Nylon Lock Nut, 1/2	000950	2
25	Bolt, 1/2 x 1-1/2	000435	16
26	1/2" Serrated Washer	702821	16
27	Nylon Locknut, 1/4	003001	4
28	Bolt, 1/4 x 3/4	000175	4

Ref#	Description	Part#	Qty
29	Joint Cover Bracket	702843	2
30	Rubber Cover	701032	2
31	Nylon Locknut, 1/4	003001	4
32	Bolt, 1/4 x 3-1/4	000200	2
33	Roll Pin, 3/8 x 2	702798	4
34	Pivot Pin	702725	4
35	Center Frame Weldment, Left	702857	1
36	Bolt, 5/8 x 10	000690	2
37	Bolt, 1/2 x 4	000205	2
38	Center Gearbox Assembly	702846	1
39	Nylon Locknut, 5/8	000972	6
40	Hex Drive Shaft, Center	702884	1
41	Bearing Bracket	702877	2
42	Bearing, 6009-2RS	702613	3
43	Finger Joint Spacer	702668	2
44	Finger & Bearing Assembly	702874	2
45	Rod End Cylinder Pin	701017	2
46	90 Degree Elbow, - #4 MJ x #6 MP	101916	2
47	1/4" Flat Washer	001020	8
48	1/4" x 1-1/4" Hex Head Bolt	000184	2

# Main Assembly S/N 94344 - 94416

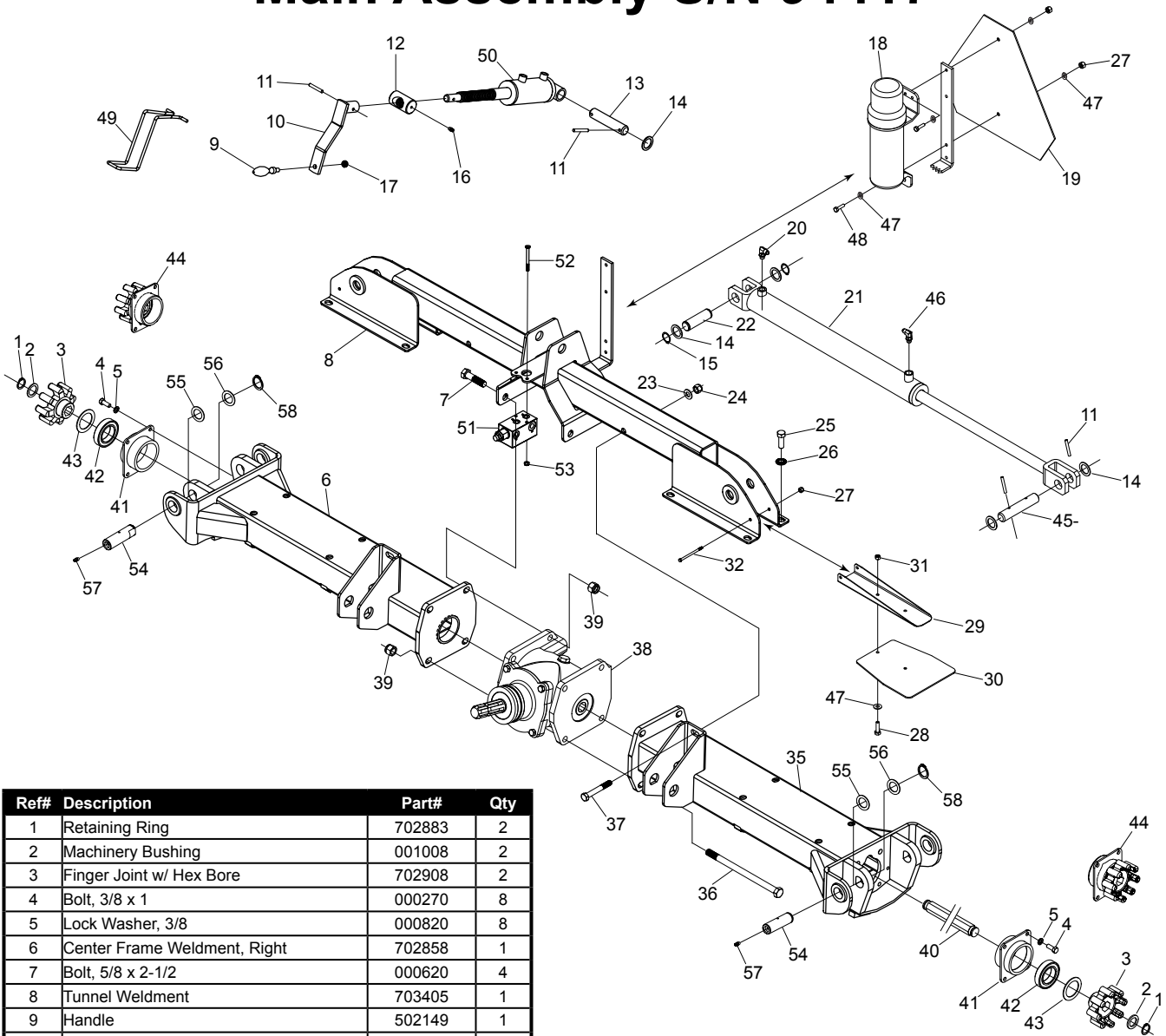
\*Note: Center frame weldments (ID's 6 and 35) will be sold as new style center frame weldments (shown on page 7). All pivot mounting hardware required including D pins, retaining rings, shims, and grease fittings are included in part numbers 5PQ703728 and 5PQ703729.



Ref#	Description	Part#	Qty
1	Retaining Ring	702883	2
2	Machinery Bushing	001008	2
3	Finger Joint w/ Hex Bore	702908	2
4	Bolt, 3/8 x 1	000270	8
5	Lock Washer, 3/8	000820	8
6	Center Frame Weldment, Right	703728	1
7	Bolt, 5/8 x 2-1/2	000620	4
8a	Tunnel Weldment	702817	1
8b	Tunnel Weldment S/N 93197+	703405	1
9	Handle	502149	1
10	Handle Assembly	503037	1
11	Roll Pin, 1/4 x 1-3/4	500187	5
12	Threaded Cylinder Pin	502218	1
13	Front Tilt Cylinder Pin	701021	1
14	Machinery Bushing, 1"	001008	6
15	Retaining Ring, 1"	505648	4
16	Grease Fitting	400117	5
17	Nylon Jam Nut, 3/8	000920	1
18	OM Canister	503050	1
	Operator's Manual, TT4100	990039	1
19	SMV Triangle	507166	1
20	90 Degree Elbow,- #4 MJ x #4 MP	702459	2
21	Cylinder	701040	2
22	Cylinder Pin	701021	2
23	Washer	001061	2
24	Nylon Lock Nut, 1/2	000950	2
25	Bolt, 1/2 x 1-1/2	000435	16
26	1/2" Serrated Washer	702821	16
27	Nylon Locknut, 1/4	003001	4
28	Bolt, 1/4 x 3/4	000175	4
29	Joint Cover Bracket	702843	2
30	Rubber Cover	701032	2
31	Nylon Locknut, 1/4	003001	4

Ref#	Description	Part#	Qty
32	Bolt, 1/4 x 3-1/4	000200	2
33	Roll Pin, 3/8 x 2	702798	4
34	Pivot Pin	702725	4
35	Center Frame Weldment, Left	703729	1
36	Bolt, 5/8 x 10	000690	2
37	Bolt, 1/2 x 4	000205	2
38	Center Gearbox Assembly	702846	1
39	Nylon Locknut, 5/8	000972	6
40	Hex Drive Shaft, Center	702884	1
41	Bearing Bracket	702877	2
42	Bearing, 6009-2RS	702613	3
43	Finger Joint Spacer	702668	2
44	Finger & Bearing Assembly	702874	2
45	Rod End Cylinder Pin	701017	2
46	90 Degree Elbow,- #4 MJ x #6 MP	101916	2
47	1/4" Flat Washer	001020	8
48	1/4" x 1-1/4" Hex Head Bolt	000184	2
49	Cylinder Handle Lock	702713	1
50	Front Tilt Cylinder	703604	1
51	HT4100 Manifold	703619	1
52	1/4" x 2-1/2" Hex Head Bolt	000195	2
53	1/4" Nylon Lock Nut	003001	2

# Main Assembly S/N 94417+

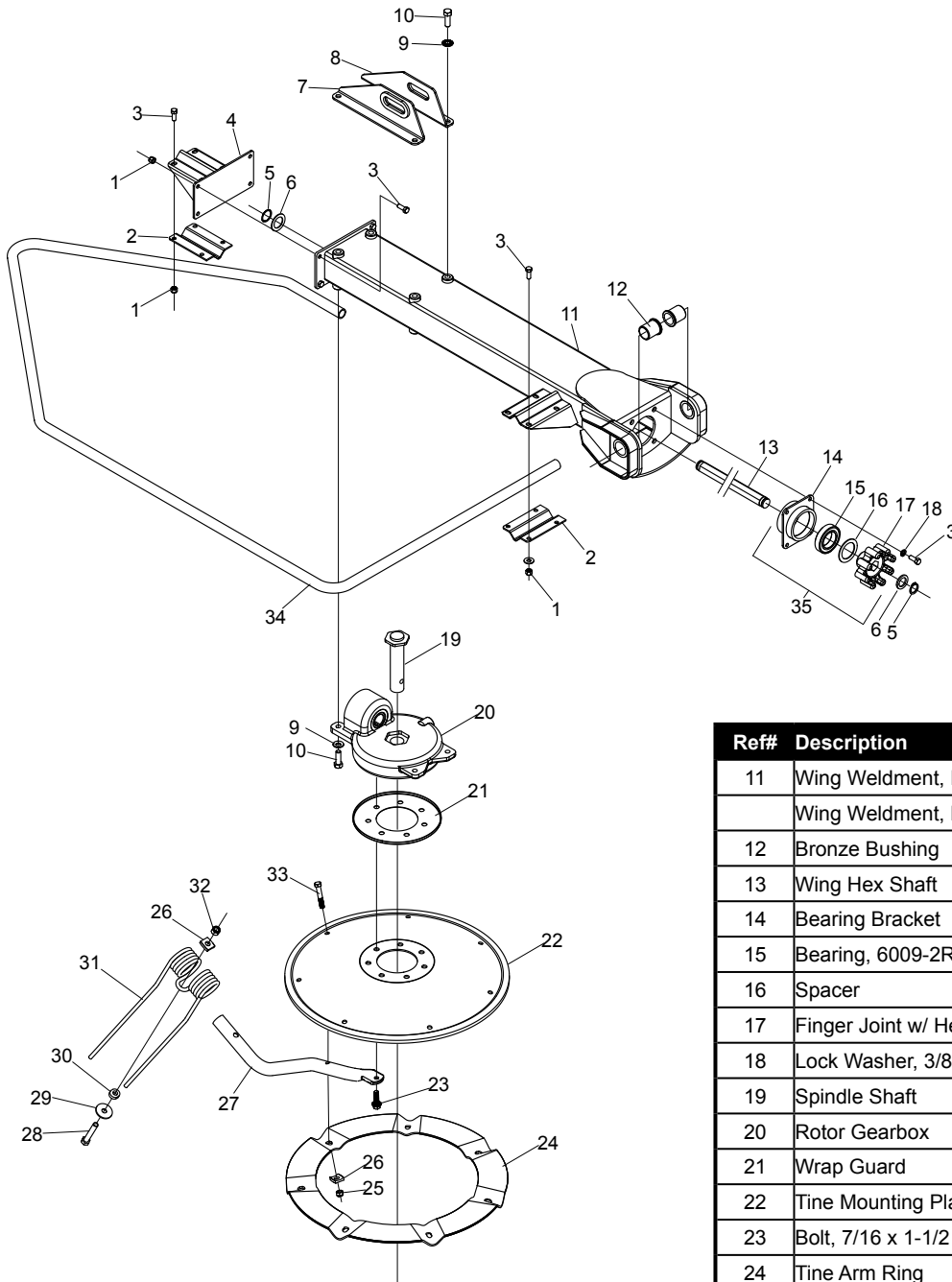


Ref#	Description	Part#	Qty
1	Retaining Ring	702883	2
2	Machinery Bushing	001008	2
3	Finger Joint w/ Hex Bore	702908	2
4	Bolt, 3/8 x 1	000270	8
5	Lock Washer, 3/8	000820	8
6	Center Frame Weldment, Right	702858	1
7	Bolt, 5/8 x 2-1/2	000620	4
8	Tunnel Weldment	703405	1
9	Handle	502149	1
10	Handle Assembly	503037	1
11	Roll Pin, 1/4 x 1-3/4	500187	5
12	Threaded Cylinder Pin	502218	1
13	Front Tilt Cylinder Pin	701021	1
14	Machinery Bushing, 1"	001008	6
15	Retaining Ring, 1"	505648	4
16	Grease Fitting	400117	5
17	Nylon Jam Nut, 3/8	000920	1
18	OM Canister	503050	1
	Operator's Manual	990130	1
19	SMV Triangle	507166	1
20	90 Degree Elbow,- #4 MJ x #4 MP	702459	2
21	Cylinder	701040	2
22	Cylinder Pin	701021	2
23	Washer	001061	2
24	Nylon Lock Nut, 1/2	000950	2
25	Bolt, 1/2 x 1-1/2	000435	16
26	1/2" Serrated Washer	702821	16
27	Nylon Locknut, 1/4	003001	4
28	Bolt, 1/4 x 3/4	000175	4
29	Joint Cover Bracket	702843	2
30	Rubber Cover	701032	2
31	Nylon Locknut, 1/4	003001	4
32	Bolt, 1/4 x 3-1/4	000200	2
33	Roll Pin, 3/8 x 2	702798	4
34	Pivot Pin	702725	4

Ref#	Description	Part#	Qty
35	Center Frame Weldment, Left	702857	1
36	Bolt, 5/8 x 10	000690	2
37	Bolt, 1/2 x 4	000205	2
38	Center Gearbox Assembly	702846	1
39	Nylon Locknut, 5/8	000972	6
40	Hex Drive Shaft, Center	702884	1
41	Bearing Bracket	702877	2
42	Bearing, 6009-2RS	702613	3
43	Finger Joint Spacer	702668	2
44	Finger & Bearing Assembly	702874	2
45	Rod End Cylinder Pin	701017	2
46	90 Degree Elbow,- #4 MJ x #6 MP	101916	2
47	1/4" Flat Washer	001020	8
48	1/4" x 1-1/4" Hex Head Bolt	000184	2
49	Cylinder Handle Lock	702713	1
50	Front Tilt Cylinder	703604	1
51	HT4100 Manifold	703619	1
52	1/4" x 2-1/2" Hex Head Bolt	000195	2
53	1/4" Nylon Lock Nut	003001	2
54	Wing 1.250" D Pin	703052	4
55	1-1/4" x 1-7/8" 18 Ga. Machinery Bushing	703588	4
56	1-1/4" x 1-7/8 Machinery Bushing, 14 Ga.	500185	4
57	1/4"-28 Spin-drive Grease Zert	400117	4
58	External Retaining Ring, 1-1/4" Zinc	702826	4



# TT4100 Rotor and Wing Assembly

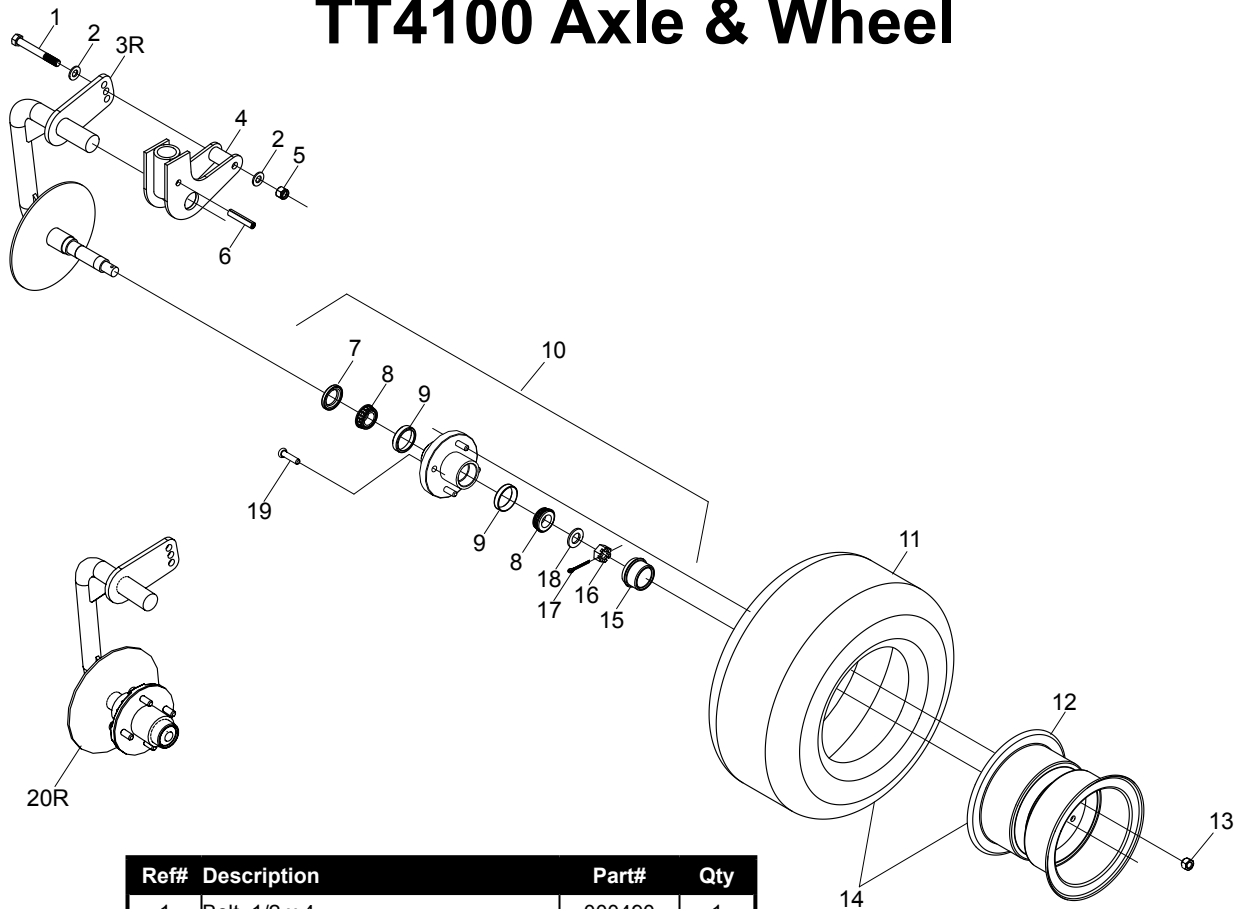


Ref#	Description	Part#	Qty
1	Nylon Locknut, 3/8	003000	8
2	Guard Cradle	702696	2
3	Bolt, 3/8 x 1	000270	8
4	Guard Bracket	702704	1
5	Retaining Ring	702883	2
6	Machinery Bushing, 1/4	001008	2
7	Cylinder Bracket	702837	1
8	Cylinder Bracket	702836	1
9	Safety Washer	702821	8
10	Bolt, 1/2 x 1-1/2	000435	8

Ref#	Description	Part#	Qty
11	Wing Weldment, Right	702863	1
	Wing Weldment, Left	702865	
12	Bronze Bushing	702797	2
13	Wing Hex Shaft	702882	1
14	Bearing Bracket	702877	1
15	Bearing, 6009-2RS	702613	1
16	Spacer	702668	1
17	Finger Joint w/ Hex Bore	702908	1
18	Lock Washer, 3/8	000820	8
19	Spindle Shaft	702674	1
20	Rotor Gearbox	702848	1
21	Wrap Guard	702734	1
22	Tine Mounting Plate	702714	1
23	Bolt, 7/16 x 1-1/2	000725	7
24	Tine Arm Ring	700942	1
25	Nylon Locknut, 7/16	000385	7
26	Radius Washer	701008	14
27	Tine Arm	702718	7
28	Bolt, 1/2 x 3 Gr.8	000471	7
29	Bottom Tine Washer	701004	7
30	Tine Pitch Washer	701005	7
31	Black Tine, CCW Rotation	700901	7
	Gray Tine, CW Rotation	700929	
32	Nylon Locknut, 1/2	000950	7
33	Bolt, 7/16 x 2-1/2	000375	7
34	Outer Guard	702693	1
35	Finger & Bearing Assembly	702874	1

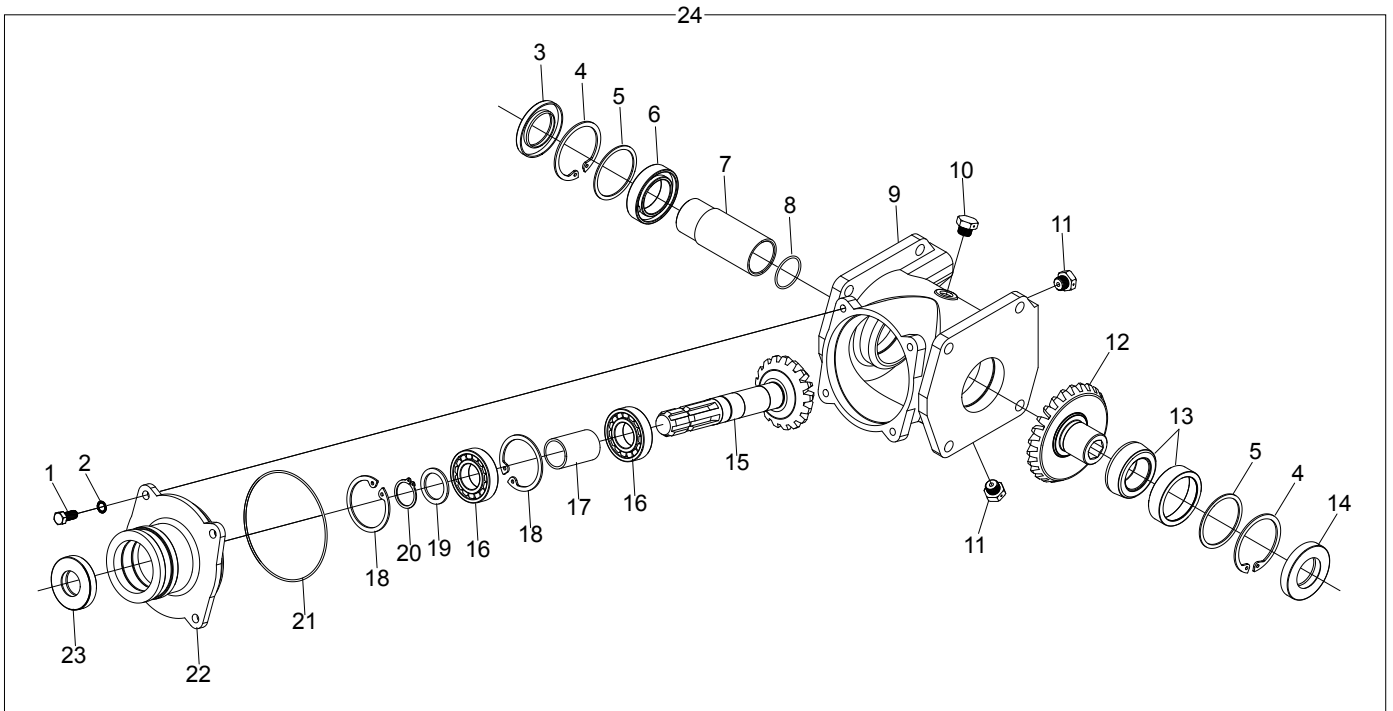
NOTE: Quantities listed are for left side only

# TT4100 Axle & Wheel



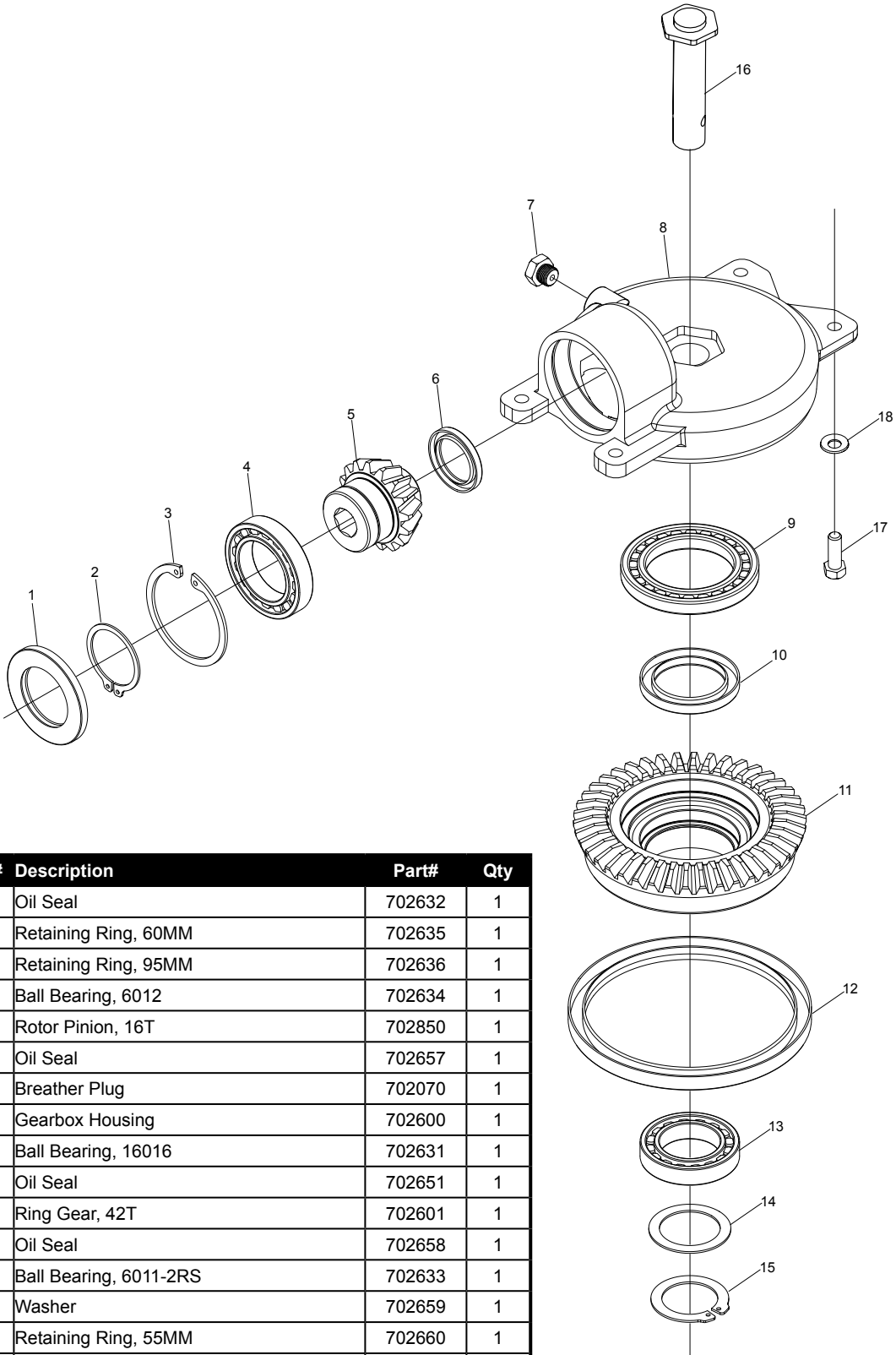
Ref#	Description	Part#	Qty
1	Bolt, 1/2 x 4	000490	1
2	SAE Washer, 1/2	001061	2
3R	Spindle Assembly, Right	702825	1
3L	Spindle Assembly, Left	702824	1
4	Spindle Bracket	702729	1
5	Nylon Locknut, 1/2	000950	1
6	Spirol Roll Pin	702019	1
7	Grease Seal	500201	1
8	Bearing, L44643	500202	2
9	Race, L44610	500204	2
10	Complete Hub	500199	1
11	Tire	500221	1
12	Rim	500222	1
13	Lug Bolt (for threaded hub)	500210	4
	Lug Nut (for drive in stud)	508506	
14	Tire and Wheel	500220	1
15	Dust Cap	500209	1
16	Spindle Nut	500207	1
17	Cotter Pin	500208	1
18	Spindle Washer	500206	1
19	Drive-In Stud	508505	4
20R	Right Spindle and Hub Assembly	702913	1
20L	Left Spindle and Hub Assembly	702912	1

# Input Gearbox Assembly



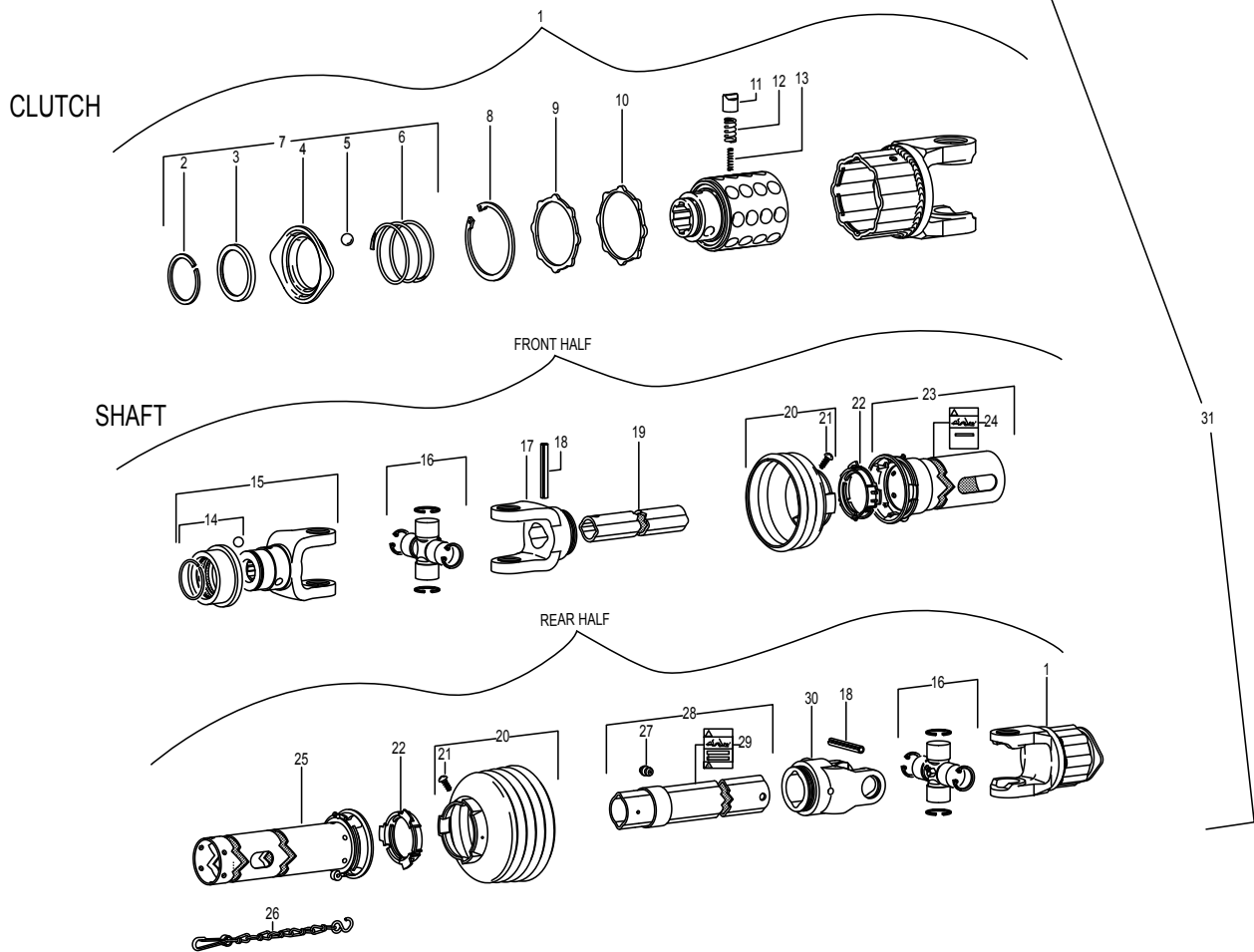
Ref#	Description	Part#	Qty
1	Bolt, 7/16 x 1 Gr. 8	000349	4
2	Safety Washer, 7/16	702663	4
3	Oil Seal	702654	1
4	Retaining Ring, 80MM	702643	2
5	Spacer Washer	702661	2
6	Ball Bearing, 6010	702638	1
7	Gear Spacer	702847	1
8	O-Ring	702646	1
9	Gearbox Housing	702615	1
10	Breather Plug	703116	1
11	Plug	703115	2
12	26T Gear	702845	1
13	Tapered Bearing Set, 33109	702841	1
14	Oil Seal	702655	1
15	Input Shaft, 17T	702647	1
16	Ball Bearing, 6207	702644	2
17	Bearing Spacer	702649	1
18	Retaining Ring, 72MM	702650	2
19	Washer	702662	1
20	Retaining Ring, 35MM	702648	1
21	O-Ring	703659	1
22	Input Shaft Housing	702645	1
23	Oil Seal	702656	1
	Complete Center Gearbox	702846	

# Rotor Gearbox Assembly



Ref#	Description	Part#	Qty
1	Oil Seal	702632	1
2	Retaining Ring, 60MM	702635	1
3	Retaining Ring, 95MM	702636	1
4	Ball Bearing, 6012	702634	1
5	Rotor Pinion, 16T	702850	1
6	Oil Seal	702657	1
7	Breather Plug	702070	1
8	Gearbox Housing	702600	1
9	Ball Bearing, 16016	702631	1
10	Oil Seal	702651	1
11	Ring Gear, 42T	702601	1
12	Oil Seal	702658	1
13	Ball Bearing, 6011-2RS	702633	1
14	Washer	702659	1
15	Retaining Ring, 55MM	702660	1
	Complete Rotor Gearbox	702848	

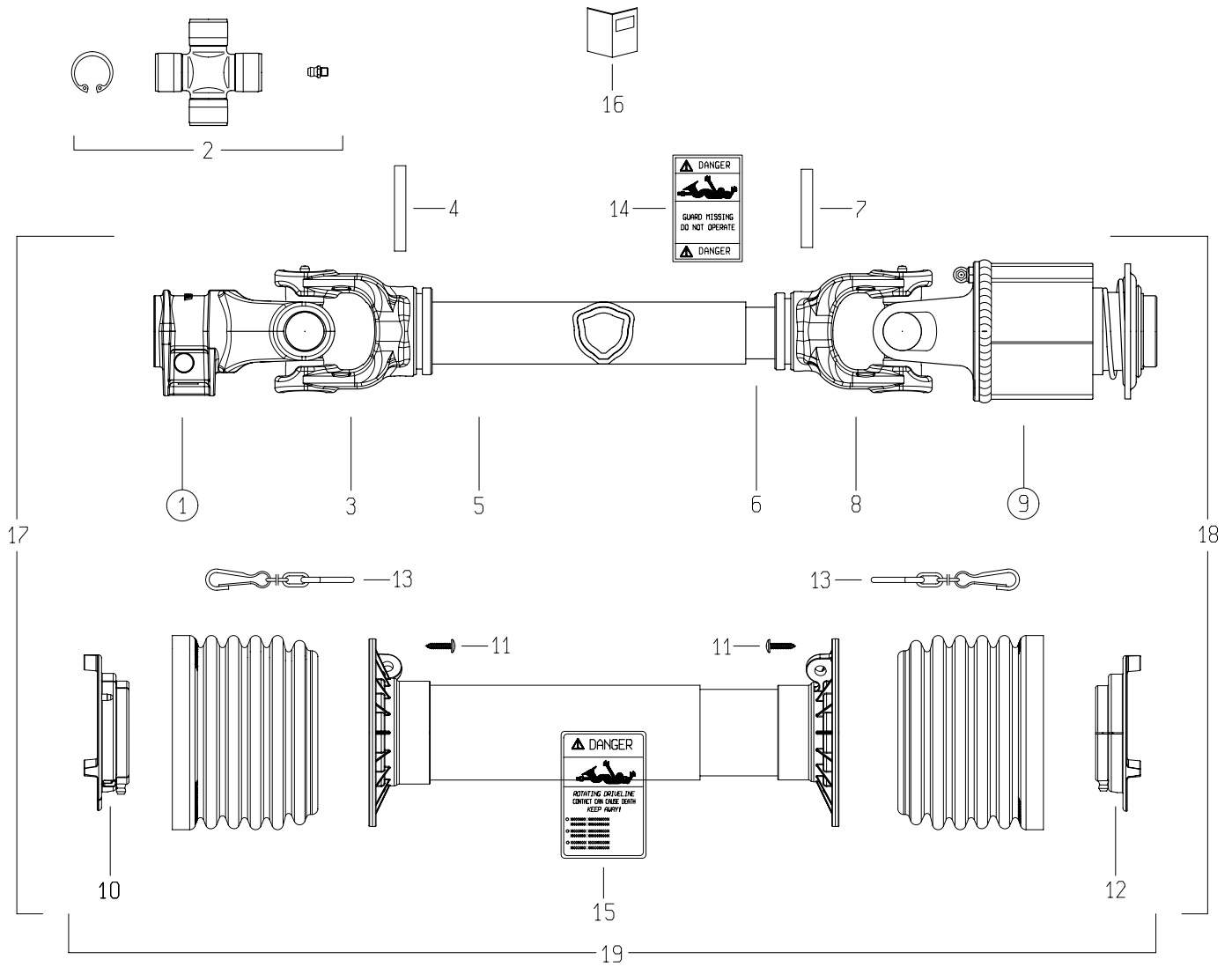
# PTO Shaft



Ref#	Description	Part#	Qty
1	Radial Pin Clutch	702275	1
2	Retaining Ring	500048	1
3	Flanged Collar	500047	1
4	Lock Collar	500046	1
5	Ball 1/2	500044	3
6	Compression Spring	500045	1
7	Locking Flange Kit	500050	1
8	Retaining Ring	500043	1
9	Thrust Ring	500042	1
10	Plastic Seal Ring	500041	1
11	Cam	500038	32
12	Outer Compression Spring	500039	32
13	Inner Compression Spring	500040	16
14	Collar Kit	702279	1
15	Yoke, 1-3/8" 6-Spline	702270	1
16	Cross & Bearing Kit	702259	2
17	Inboard Yoke	702271	1

Ref#	Description	Part#	Qty
18	Spring Pin, 10 x 65	500031	2
19	Inner Profile	702272	1
20	Shield Cone, 5-Rib	702276	2
21	Screw	500058	2
22	Bearing Ring	500052	2
23	Outer Shield Tube	702277	1
24	Decal	500059	1
25	Inner Shield Tube	702278	1
26	Safety Chain	500060	1
27	Grease Fitting	500062	1
28	Outer Profile	702273	1
29	Decal	500061	1
30	Inboard Yoke	702274	1
31	Front Half Shaft	702280	1
32	Rear Half Shaft	702281	1
33	Complete PTO Shaft	701034	1
34	PTO Shield Kit for Bondioli PTO only	701080	1

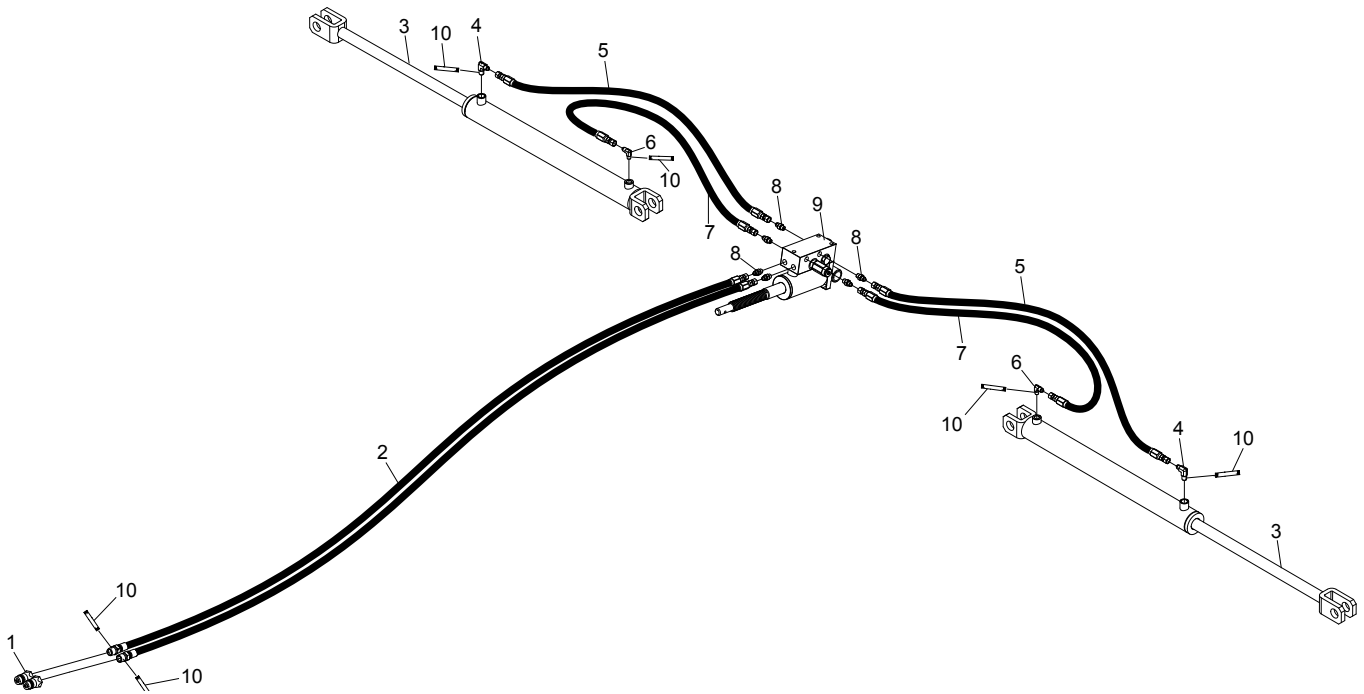
# PTO Shaft



Ref#	Description	Part#
1	Yoke #4/S4 1-3/8"Z6 Shrouded Pin (007)	500427
2	Cross Kit S4-G4 27X74.6 Cap Zerk	500428
3	Tube Yoke #4-G4 Outer (43.5)	500429
4	Flexible Roll Pin 8X60 Din1481	500430
5	Cardan Tube Outer 12508 L=1270	500431
6	Cardan Tube Inner 12507 L=1270	500432
7	Flexible Roll Pin 8X55 Din1481	500433
8	Tube Yoke #4-G4 Inner (36.0)	500434
9		500435
10	Shield Support Outer G3-G4	500436

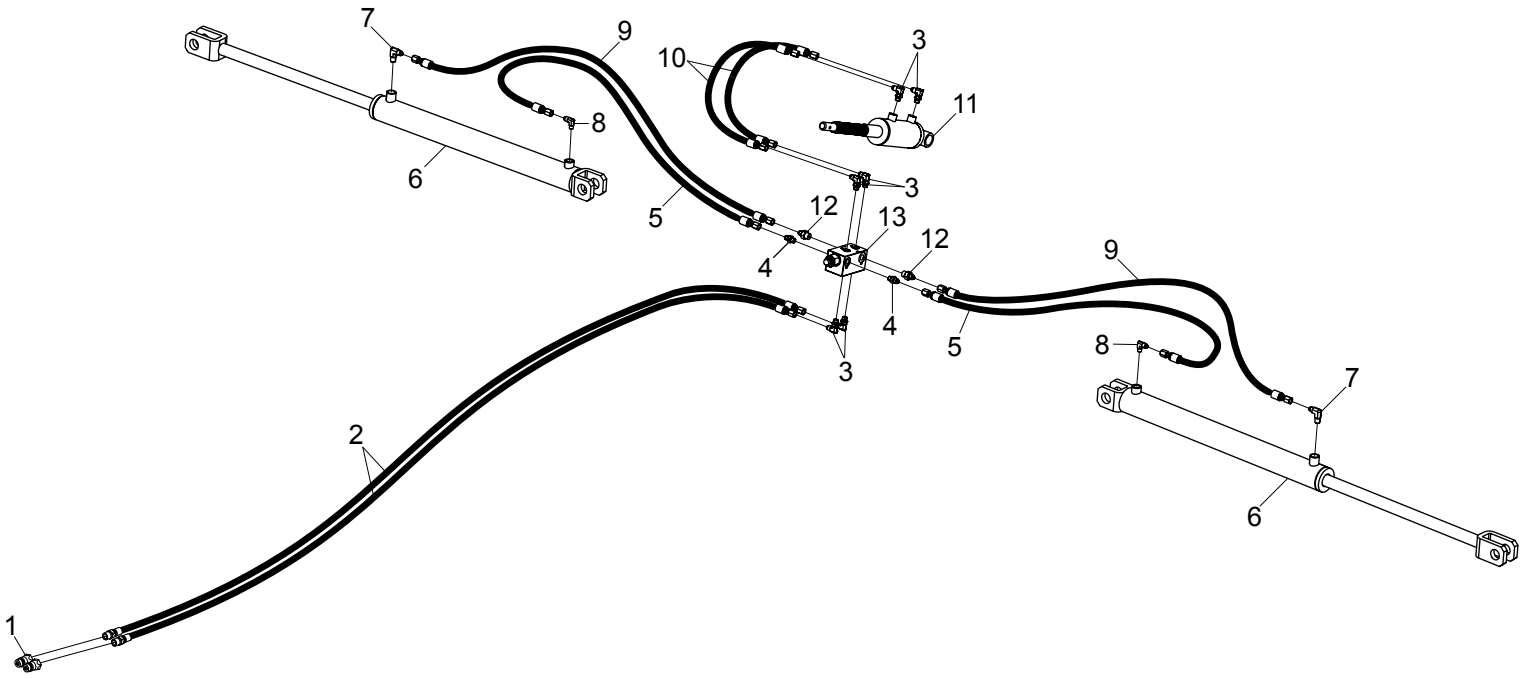
Ref#	Description	Part#
11	Screw 4.8X22 Self Tap Zinc	500417
12	Shield Support Inner G3-G4	500437
13	Shield Chain W/S-Hook L=500Mm	500420
14	Label - Danger - Outer Drive Tube	500421
15	Label - Danger - Outer Shield Tube	500422
16	Instruction Booklet	500423
17	Half Shaft Cleared	500438
18	Half Shaft Cleared	500439
19	Complete Shield Kit	500440

# Hydraulics -94344



Ref#	Description	Part#	Qty
1	Hydraulic Coupler	290105	2
2	Hose, 118"	701039	2
3	Cylinder	701040	2
4	Elbow Fitting	101916	2
5	Hose, 50.5"	702844	2
6	Elbow Fitting	702459	2
7	Hose, 41"	701038	2
8	Straight Fitting	290195	6
9	Tilt Cylinder	701033	1

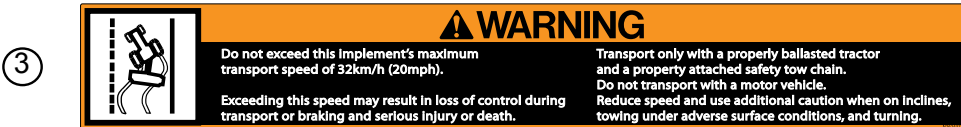
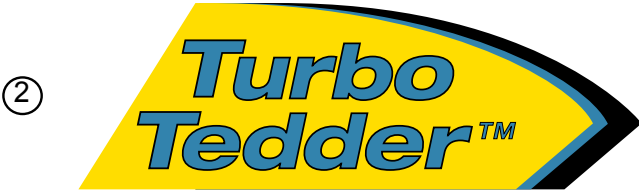
# Hydraulics 94344+



Ref#	Description	Part#	Qty
1	Hydraulic Coupler	290105	2
2	Hose, 118"	701039	2
3	90 Degree Fitting, #4 MJ x #4 MB	700948	6
4	Straight Fitting	290195	2
5	Hose, 41"	701038	2
6	Cylinder	701040	2
7	Elbow Fitting	101916	2
8	Elbow Fitting	702459	2
9	Hose, 50-1/2"	702844	2
10	Hose, 15-1/2"	703379	2
11	Front Tilt Cylinder, No Manifold	703604	1
12	#4MJ x #6MB Straight Fitting	703620	2
13	4100 Manifold	703619	1



# Decals



Ref#	Description	Part#	Qty
1	TT4100 Decal	702195	2
2	TurboTedder Decal	702196	2
3	Warning, Speed	903124	1
4	Warning, Thrown Objects	903106	2
5	Warning, Prevent Entanglement	903123	2
6	Warning, Hydraulic Pressure	903114	1
7	Warning, Crushing Hazard	903134	1
8	Amber Retroreflective Decal	903121	1
9	Red Retroreflective Decal	903112	2
10	Caution, General Information	903103	1
11	Caution, 540 PTO	903107	1
	Complete Decal Kit, TT4100	702864	1