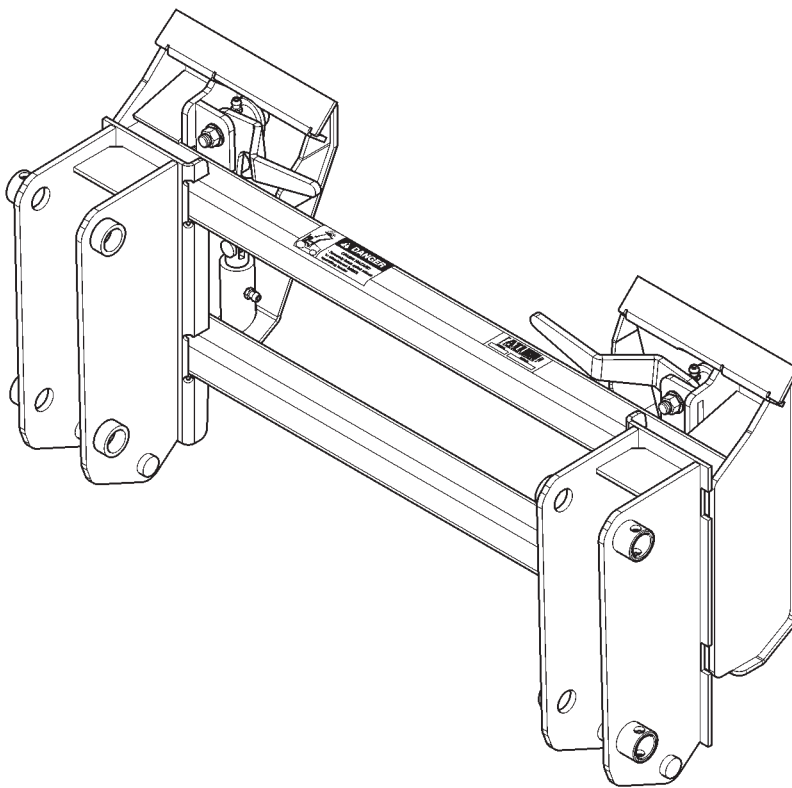


# **TACH-ALL™**

**QUICK ATTACH  
HEAVY DUTY**

## **INSTALLATION & PARTS MANUAL**



**ATI**   
CORPORATION

New Holland, PA 17557  
Phone (717) 354-8721 • FAX (717) 354-2162  
1-800-342-0905  
[www.preseeder.com](http://www.preseeder.com)

**APRIL 2005**  
CAT.# TachAllHDIPM-0405



COPYRIGHT 2005 by  
**ATI Corporation**  
New Holland, PA 17557 U.S.A.

All rights reserved. No part of this publication may be reproduced, stored in a retrieval system, or transmitted in any form or by any means, electronic, mechanical, photocopying, recording, or otherwise, without prior written permission of ATI Corporation.

### **DISCLAIMER**

THE INFORMATION IN THIS MANUAL IS PROVIDED TO PROMOTE THE SAFE USE OF, AND ASSIST THE OPERATOR IN ACHIEVING THE BEST PERFORMANCE FROM, THE TACH-ALL QUICK ATTACH DESCRIBED HEREIN, FOR THEIR INTENDED APPLICATIONS.



# Tach-All Quick Attach Heavy Duty



New Holland, PA 17557  
Phone (717) 354-8721 • FAX (717) 354-2162  
1-800-342-0905  
www.preseeder.com

## TABLE OF CONTENTS

<b>SUBJECT</b>	<b>PAGE NO.</b>
SERIAL NUMBER INFORMATION .....	iv
WHERE TO GET PARTS AND SERVICE .....	iv
HOW TO ORDER PARTS .....	v
LIST OF PARTS ILLUSTRATIONS .....	1



New Holland, PA 17557  
 Phone (717) 354-8721 • FAX (717) 354-2162  
 1-800-342-0905  
 www.preseeder.com

# Tach-All Quick Attach Heavy Duty

## SERIAL NUMBERS, PARTS & SERVICE

### SERIAL NUMBER INFORMATION

It is very important that the correct serial number is provided when ordering parts. The serial number plate is located on the main frame. Please mark the model and serial number of your Tach-All in the space provided below in case the plate on your quick attach is lost or damaged.

**Model** ..... **Serial Number** .....

**Dealer Name** ..... **Dealer Phone Number** .....

### WHERE TO GET PARTS AND SERVICE

When replacement parts and service are required for your Tach-All, ATI Corporation recommends returning to the dealer from which the attachment was purchased. By going to the dealer, you are dealing with people that understand and know your attachment. Our dealers have the experience servicing these machines and stock the most common parts required to keep your Tach-All in top working condition.

### NOTE:

**ATI Corporation reserves the right to discontinue models at any time, change specifications, and improve design without notice and without incurring obligation on goods previously purchased and to discontinue supplying any part listed, when the demand does not warrant production.**

# Tach-All Quick Attach Heavy Duty



New Holland, PA 17557  
Phone (717) 354-8721 • FAX (717) 354-2162  
**1-800-342-0905**  
[www.preseeder.com](http://www.preseeder.com)

## HOW TO ORDER PARTS

Parts lists contained in this book have been prepared to help you when ordering spare and/or replacement parts. Your order will be filled promptly and accurately when the following information is provided:

1. Model and serial number of the unit. (This specifically identifies the equipment you have and permits us to verify the part numbers in your order.)
2. The parts list page number and catalog number. Include catalog revision number, if applicable.
3. The **Item** number for each part. **Item** numbers on the parts list page correspond with the numbers shown on the illustration.
4. **Part Number** as it appears in the parts list. In most cases this will be a nine-digit number; for example: 200-147-000.
5. The **Description** for the part as it appears on the parts list page.

The part ordered may have a new part number, or the part may have been replaced by a newer design with a different part number. In these cases your acknowledgement, shipping papers and invoices will be written listing the current part number first; the old part number you referred to will follow the part description.

Our purpose in doing this is to tell you that the parts are fully interchangeable. This will avoid any unnecessary correspondence or delay in processing your order. We suggest that you add any new number to your parts lists for future use.





# Tach-All Quick Attach Heavy Duty



New Holland, PA 17557  
Phone (717) 354-8721 • FAX (717) 354-2162  
**1-800-342-0905**  
[www.preseeder.com](http://www.preseeder.com)

## LIST OF PARTS ILLUSTRATIONS

Figure 1. Installation .....2  
Figure 2. Tach-All .....4



New Holland, PA 17557  
Phone (717) 354-8721 • FAX (717) 354-2162  
1-800-342-0905  
www.preseeder.com

# Tach-All Quick Attach Heavy Duty

## SAFETY, INSTALLATION, OPERATION & MAINTENANCE

### SAFETY

**SAFETY** is our first concern at ATI Corporation. Safety must also be first in the mind of the operator of the quick attach. Proper maintenance is necessary to complete the safety cycle.

**CAUTION** ATTACHMENTS USED WITH THIS QUICK ATTACH MUST BE COMPATIBLE WITH THE MOUNTING SYSTEM.

**DANGER** WHEN ATTACHING AN ATTACHMENT TO THE LOADER QUICK ATTACH MOUNTING FRAME, ENGAGE TRACTOR PARKING BRAKE, AND STOP TRACTOR ENGINE BEFORE DISMOUNTING TRACTOR. PUSH THE HANDLES OVER CENTER TO THE LATCH POSITION TO INSURE THAT THE ATTACHMENT IS SECURELY ATTACHED TO THE MOUNTING FRAME.

### INSTALLATION

Refer to Figure 1. Park tractor with bucket on the ground. Engage the tractor parking brake and turn off the tractor engine. Remove the four keeper pins from the four loader pins. Remove the four loader pins (**A and B**) that attach the bucket to the loader. Back tractor away from bucket. Engage the tractor parking brake and turn off the tractor engine. Maneuver quick attach in place, in front of loader so that loader and quick attach pin holes line up. Install the two lower loader pivot pins (**A**) in the lower holes of the quick attach. Install keeper pins securely to lock pivot pins in place. Install the two upper cylinder pins (**B**) in the upper holes of the loader and quick attach. Install keeper pins securely to lock the cylinder pins in place.

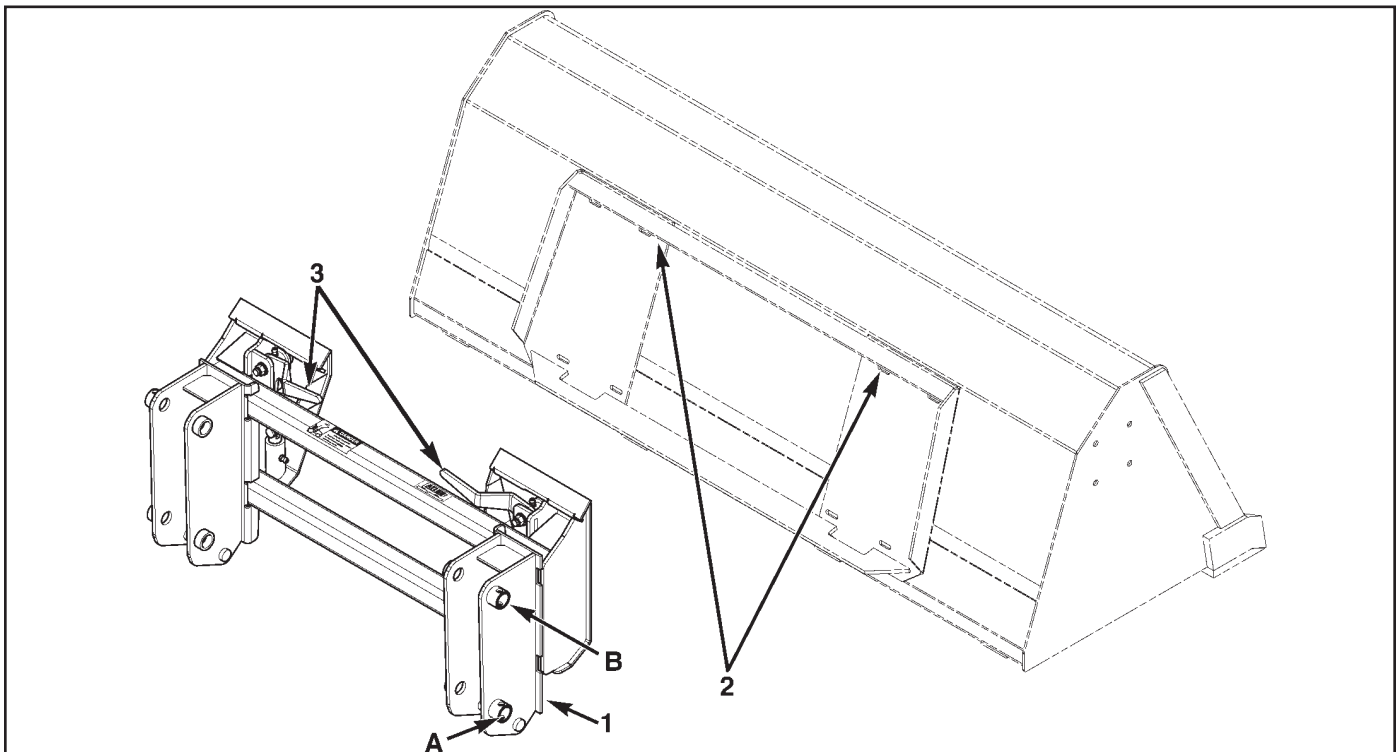


Figure 1. Installation

# Tach-All Quick Attach Heavy Duty



New Holland, PA 17557  
Phone (717) 354-8721 • FAX (717) 354-2162  
1-800-342-0905  
www.preseeder.com

## SAFETY, INSTALLATION, OPERATION & MAINTENANCE

### OPERATION

Refer to Figure 1. Quick-changing of a loader-mounted attachment is made possible with the quick attach system. The quick attach mounting frame (1) is installed on the loader and held in place by the loader pins. The frame remains on the loader and the loader pins are not removed when changing attachments.

The attachment is joined by matching the saddle (2) at the top of the attachment plate with the top of the quick attach frame.

#### **Mounting an attachment:**

A) Pull the latch pin handles (3) to the unlatched position. Latch pin handles must be all the way up to ensure that the latching pins are fully retracted.

B) Tilt the quick attach (1) forward with the loader tilt cylinders. Ease the top of the mounting frame into the saddle (2) of the attachment plate.

C) Roll the mounting frame back and raise the loader boom slightly so that the back of the attachment plate rests flat against the front of the quick attach frame.

When the attachment is properly seated in the saddle and against the front of the quick attach frame, set the tractor parking brake, turn off the tractor engine, and dismount the tractor.

D) Push the latch pin handles (3) down to the over center latched position, to engage the latching pins.

#### **Removing an attachment:**

A) Lower the loader so that the attachment is resting on the ground.

B) Set the tractor parking brake, turn off the tractor engine, and dismount the tractor.

C) Pull the latch pin handles (3) up to the unlatched position to release the latching pins.

D) Start tractor engine, tilt the attachment forward and slowly back away from the attachment at the same time.

### MAINTENANCE

Attachments are secured to the quick attach with an over center latching pin system. It is important that these parts are kept clean, lubricated, and free of debris. Keep the latching pin free from dirt and debris. Lubricate the latching pin and the latching pin handle weekly with grease. Grease the pins and handles with the latching pin handles down in the latched position.

Keep latching pin handles tight. If handles become loose, tighten the hex nut slightly to snug up handles.

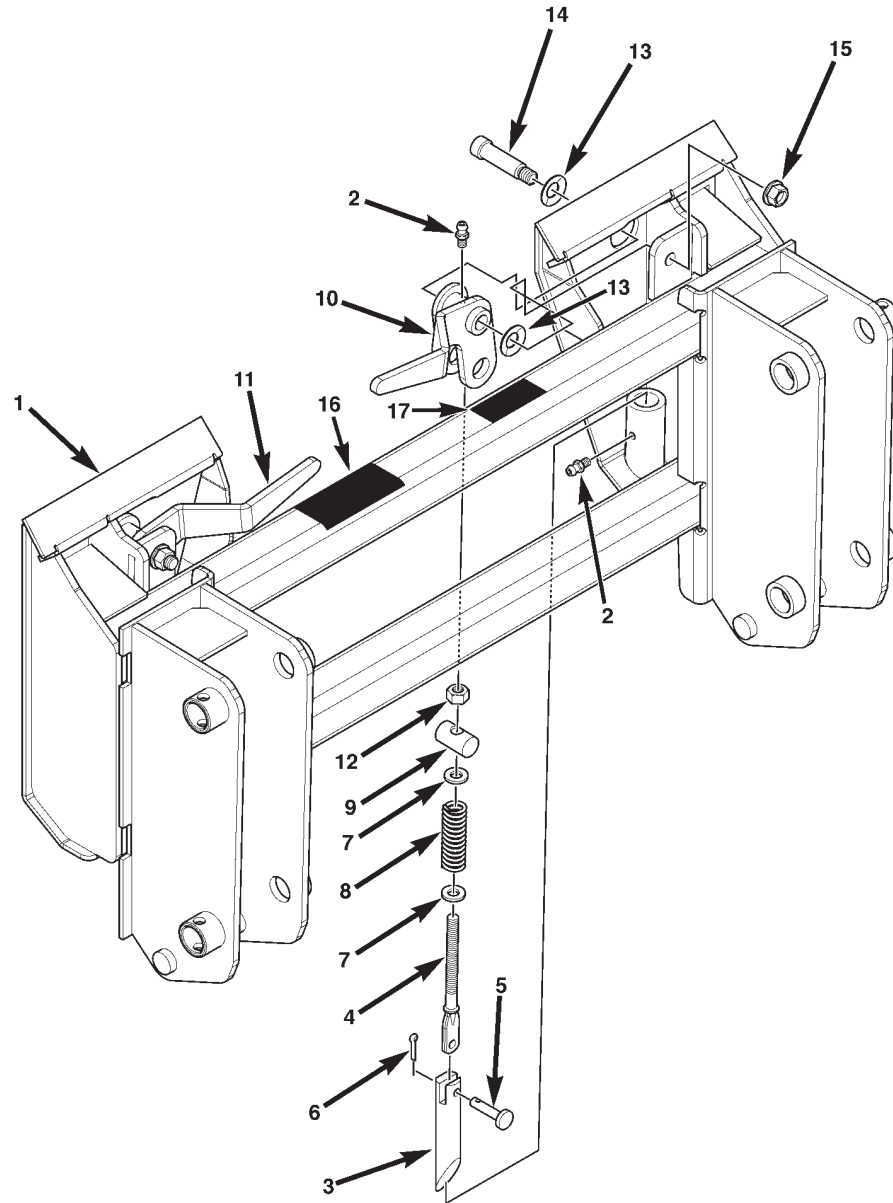
Clean the saddle at the top of the attachment plate, and the latching pin holes of any dirt and debris before mounting an attachment to the quick attach.



New Holland, PA 17557  
Phone (717) 354-8721 • FAX (717) 354-2162  
1-800-342-0905  
www.preseeder.com

# Tach-All Quick Attach Heavy Duty PARTS LIST

Figure 2. Tach-All



# Tach-All Quick Attach Heavy Duty PARTS LIST



New Holland, PA 17557  
Phone (717) 354-8721 • FAX (717) 354-2162  
1-800-342-0905  
www.preseeder.com

Figure 2. Tach-All

Item	Part No.	Qty	Description
1	100-084-100	1	Frame, Main, QA-ALO, Alo/Quicke Quick Attach
	100-166-000	1	Frame, Main, QA-JD4, John Deere Loader 145, 146, 148 & 158
	100-167-000	1	Frame, Main, QA-JD6, John Deere Loader 620, 640, 720, 721, 725, 726, 740, 741 & 746
	100-168-000	1	Frame, Main, QA-JD7, John Deere Loader 245, 260 & 265 tractor loader
	100-169-000	1	Frame, Main, QA-JD8, John Deere Loader 840
	100-077-100	1	Frame, Main, QA-JD9, John Deere Loader 48
	100-087-100	1	Frame, Main, QA-JD10, John Deere Loader 100, 175
	100-170-000	1	Frame, Main, QA-KU14, Kubota Loader LA1301, LA1601, LA1251 w/Kubota QA
	100-171-000	1	Frame, Main, QA-FO5, Ford New Holland Loader 345C & 345D
	100-172-000	1	Frame, Main, QA-FO6, Ford New Holland Loader 445C, 445D, 545C & 545D
	100-079-100	1	Frame, Main, QA-FO7, Ford New Holland Loader 712, 720, 725, 730 & 735
	100-081-100	1	Frame, Main, QA-FO8, Ford New Holland Loader 740
	100-089-100	1	Frame, Main, QA-FO5, Ford New Holland Loader 776A, 776B, 777B, 777D & 777E
	100-074-100	1	Frame, Main, QA-HD, Blank Frame, Heavy-Duty w/o mounting brackets
2	000-166-002	AR	Fitting, Lube, 3/16" Drive
3	000-161-043	2	Pin, Latch, Round
4	000-161-061	2	Pin, Spring (Connecting Rod)
5	000-161-015	2	Pin, Clevis, 3/8" Dia. x 1-1/4" Long
6	LP	2	Pin, Cotter, 5/32" Dia. x 1" Long
7	LP	4	Washer, Flat, 1/2", SAE
8	000-161-013	2	Spring, Compression
9	000-161-044	4	Pin, Pivot, 1" Dia. x 1-3/4" Long
10	100-160-000	1	Handle, Latch, Pin, Right
11	100-159-000	1	Handle, Latch, Pin, Left
12	LP	2	Nut, Hex, Nylon Lock, 1/2"-13 UNC
13	000-161-014	4	Spring, Belleville Disc
14	000-150-326	2	Bolt, Socket Head, 3/4" Dia. x 2-1/4" Shoulder, 5/8"-11UNC
15	000-158-141	2	Nut, Hex, Flange, 5/8"-11UNC
16	000-186-039	1	Decal, Danger, Crush Hazard
17	000-186-035	1	Plate, Model/Serial, Adhesive Back

AR - As Required    NSS - Not Serviced Separately    ASN - After Serial No.    BSN - Before Serial No.    LP - Local Purchase