



OPERATOR'S AND PARTS MANUAL

PATENTED SNOW PUSH



PALADIN
LIGHT CONSTRUCTION GROUP

BRADCO

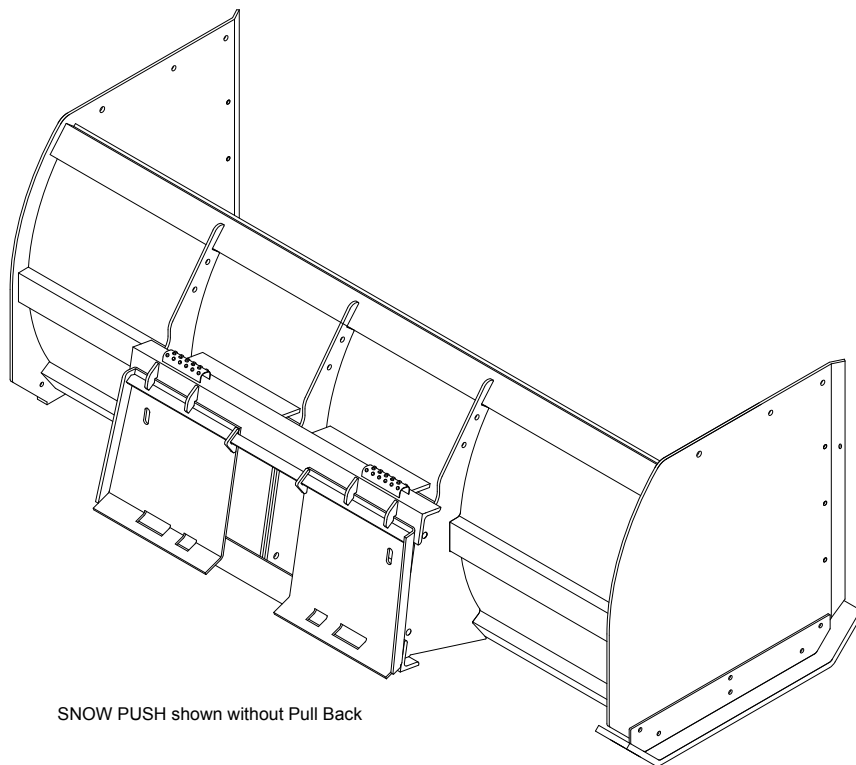


HARLEY

McMILLEN

SWEEPSTER

The Power of Combined Excellence



SNOW PUSH shown without Pull Back

SERIAL NUMBER: _____

MODEL NUMBER: _____

Manual Number: MR35630

**Models: 11773, 11785, 11795, 11721;
LAF3618, LAF3617, LAF3682,
LAF3684; & 11016;
& Optional Kits**

Rev. 2

TABLE OF CONTENTS

INTRODUCTION	2
GENERAL INFORMATION	2
SERIAL NUMBER	2
OWNER AND OPERATOR SAFETY INFORMATION	
SAFETY STATEMENTS	3
SAFETY PRECAUTIONS	3-5
SAFETY SIGNS	6-7
SPECIFICATIONS	8-9
MOUNTING	10
SET UP	10-12
OPERATION	13
MAINTENANCE	13-14
SERVICE	15
STORAGE	15
PARTS ILLUSTRATION	
11700 SERIES SNOW PUSH	16
LAF3600 SERIES SNOW PUSH & OPTIONAL KITS	18, 20 & 22
11016 SNOW PUSH & OPTIONAL KIT	24
PARTS LIST	
11700 SERIES SNOW PUSH	17
LAF3600 SERIES SNOW PUSH	19
PULL BACK	21
PULL BACK RUBBER EDGE KITS	23
BUCKET LIP MOUNT	23
11016 SNOW PUSH	25
WARRANTY	26

INTRODUCTION

Congratulations on your purchase of a new FFC Snow Push. This product has been designed and built to push loose material forward, primarily snow and manure. You or any other person who will be assembling, operating, maintaining, or working with this product are required to read and completely understand the information and instructions contained in this manual. If anyone does not fully understand every part of this manual, please obtain further assistance by contacting the dealer from which this product was purchased or by contacting FFC at the telephone number or address listed on the cover of this manual. Keep this manual available for reference whenever this product is being handled or used. Provide this manual to any new owners and/or operators.

This manual covers model(s) 11773, 11785, 11795, 11721; LAF3618, LAF3617, LAF3682, LAF3684; and 11016.

GENERAL INFORMATION

The purpose of this manual is to assist in assembling, mounting, operating, and maintaining your Snow Push. Read this manual carefully to obtain valuable information and instructions that will help you achieve years of safe and dependable service.

The illustrations and data used in this manual were current at the time of printing, but due to possible engineering and/or production changes, this product may vary slightly in detail. FFC reserves the right to redesign and/or change components as may be necessary without notification to anyone.

Throughout this manual, references may be made to:

Prime Mover	The engine-driven machine to which this product must be attached.
Right, Left, Front, Rear	Directions that are determined in relation to the operator of the equipment when seated in the normal operation position.
IMPORTANT	Precautions that must be followed to prevent substandard performance.

SERIAL NUMBER LOCATION

Always refer to the model and serial number when ordering parts or requesting information from your dealer. The serial number plate for this product is located on the upper left rear face of the moldboard of your Snow Push.

Reference Information	
Model Number	Loader Make
Serial Number	Loader Model
Date Purchased	Loader Serial Number

SAFETY STATEMENTS



THIS SYMBOL BY ITSELF OR WITH A WARNING WORD THROUGHOUT THIS MANUAL IS USED TO CALL YOUR ATTENTION TO INSTRUCTIONS INVOLVING YOUR PERSONAL SAFETY OR THE SAFETY OF OTHERS. FAILURE TO FOLLOW THESE INSTRUCTIONS CAN RESULT IN INJURY OR DEATH.



DANGER

THIS SIGNAL WORD IS USED WHERE SERIOUS INJURY OR DEATH WILL RESULT IF THE INSTRUCTIONS ARE NOT FOLLOWED PROPERLY.



WARNING

THIS SIGNAL WORD IS USED WHERE SERIOUS INJURY OR DEATH COULD RESULT IF THE INSTRUCTIONS ARE NOT FOLLOWED PROPERLY.



CAUTION

THIS SIGNAL WORD IS USED WHERE MINOR INJURY COULD RESULT IF THE INSTRUCTIONS ARE NOT FOLLOWED PROPERLY.

NOTICE

NOTICE INDICATES A PROPERTY DAMAGE MESSAGE.

GENERAL SAFETY PRECAUTIONS

WARNING! READ MANUAL PRIOR TO INSTALLATION



Improper installation, operation, or maintenance of this equipment could result in serious injury or death. Operators and maintenance personnel should read this manual, as well as all manuals related to this equipment and the prime mover thoroughly before beginning installation, operation, or maintenance. **FOLLOW ALL SAFETY INSTRUCTIONS IN THIS MANUAL AND THE POWER UNIT'S MANUAL(S).**



READ AND UNDERSTAND ALL SAFETY STATEMENTS

Read all safety decals and safety statements in all manuals prior to operating or working on this equipment. Know and obey all OSHA regulations, local laws, and other professional guidelines for your operation. Know and follow good work practices when assembling, maintaining, repairing, mounting, removing, or operating this equipment.



KNOW YOUR EQUIPMENT

Know your equipment's capabilities, dimensions and operations before operating. Visually inspect your equipment before you start, and never operate equipment that is not in proper working order with all safety devices intact. Check all hardware to ensure it is tight. Make certain that all locking pins, latches, and connection devices are properly installed and secured. Remove and replace any damaged, fatigued, or excessively worn parts. Make certain all safety decals are in place and are legible. Keep decals clean, and replace them if they become worn and hard to read.

GENERAL SAFETY PRECAUTIONS

WARNING! PROTECT AGAINST FLYING DEBRIS



Always wear proper safety glasses, goggles or a face shield when driving pins in or out, or when any operation causes dust, flying debris, or any other hazardous material.

WARNING! LOWER OR SUPPORT RAISED EQUIPMENT



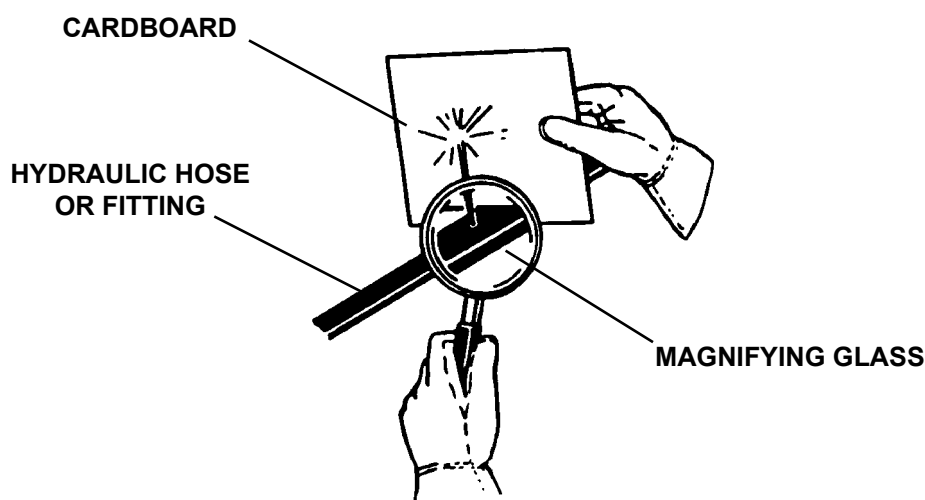
Do not work under raised booms without supporting them. Do not use support material made of concrete blocks, logs, buckets, barrels or any other material that could suddenly collapse or shift positions. Make sure support material is solid, not decayed, warped, twisted, or tapered. Lower booms to ground level or onto blocks. Lower booms and attachments to the ground before leaving the cab or operator's station.

WARNING! USE CARE WITH HYDRAULIC FLUID PRESSURE



Hydraulic fluid under pressure can penetrate the skin and cause serious injury or death. Hydraulic leaks under pressure may not be visible. Before connecting or disconnecting hydraulic hoses, read your prime movers operator's manual for detailed instructions on connecting and disconnecting hydraulic hoses or fittings.

- Keep unprotected body parts, such as face, eyes, and arms as far away as possible from a suspected leak. Flesh injected with hydraulic fluid may develop gangrene or other permanent disabilities.
- If injured by injected fluid, see a doctor at once. If your doctor is not familiar with this type of injury, ask him to research immediately to determine proper treatment.
- Wear safety glasses, protective clothing, and use a sound piece of cardboard or wood when searching for hydraulic leaks. **DO NOT USE YOUR HANDS!** **SEE ILLUSTRATION.**



GENERAL SAFETY PRECAUTIONS

WARNING! DO NOT MODIFY MACHINE OR ATTACHMENTS



Modifications may weaken the integrity of the attachment and may impair the function, safety, life, and performance of the attachment. When making repairs, use only the manufacturer's genuine parts, following authorized instructions. Other parts may be substandard in fit and quality. Never modify any ROPS (Roll Over Protection Structure) or FOPS (Falling Object Protective Structure) equipment or device. Any modifications must be authorized in writing by the manufacturer.

WARNING! SAFELY MAINTAIN AND REPAIR EQUIPMENT



- Do not wear loose clothing, or any accessories that can catch in moving parts. If you have long hair, cover or secure it so that it does not become entangled in the equipment.
- Work on a level surface in a well-lit area.
- Use properly grounded electrical outlets and tools.
- Use the correct tool for the job at hand. Make sure they are in good condition for the task required.
- Wear the protective equipment specified by the tool manufacturer.

WARNING! SAFELY OPERATE EQUIPMENT

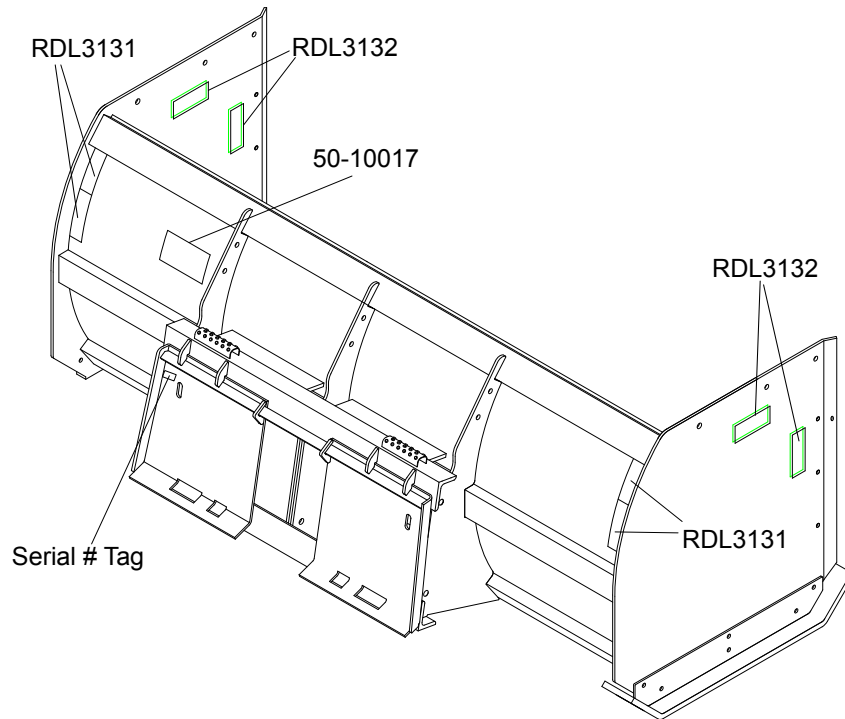


Do not operate equipment until you are completely trained by a qualified operator in how to use the controls, know its capabilities, dimensions, and all safety requirements. See your machine's manual for these instructions.

- Keep all step plates, grab bars, pedals, and controls free of dirt, grease, debris, and oil.
- Never allow anyone to be around the equipment when it is operating.
- Do not allow riders on the attachment or the prime mover.
- Do not operate the equipment from anywhere other than the correct operators position.
- Never leave equipment unattended with the engine running or with this attachment in a raised position.
- Do not alter or remove any safety feature from the prime mover or this attachment.
- Know your work site safety rules as well as traffic rules and flow. When in doubt on any safety issue, contact your supervisor or safety coordinator for an explanation.

SAFETY SIGN LOCATIONS

The diagram on this page shows the location of the decals used of the FFC Snow Push. The decals are identified by their part numbers, with reductions of the actual decals located on the following page. Use this information to order replacements for lost or damaged decals. Be sure to read all decals before operating the attachment. They contain information you need to know for both safety and product longevity.



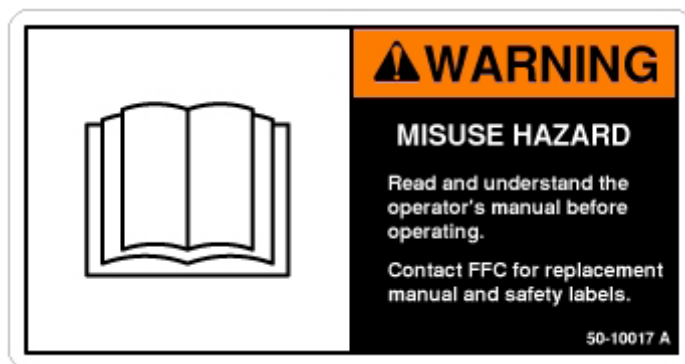
INSTRUCTIONS

- Keep all safety signs clean and legible.
- Replace all missing, illegible, or damaged safety signs.
- Replacement parts for parts with safety signs attached must also have safety signs attached.
- Safety signs are available, free of charge, from your dealer or from FFC.

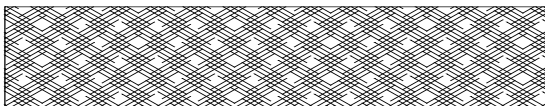
PLACEMENT OR REPLACEMENT OF SAFETY SIGNS

1. Clean the area of application with non-flammable solvent, and then wash the same area with soap and water.
2. Allow the surface to fully dry.
3. Remove the backing from the safety sign, exposing the adhesive surface.
4. Apply the safety sign to the position shown in the diagram above and smooth out any bubbles.

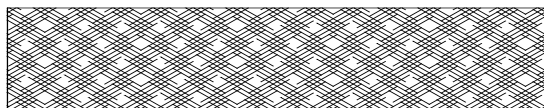
SAFETY SIGNS



PART # 50-10017
WARNING! READ MANUAL



PART # RDL3131
RED REFLECTIVE TAPE 2" X 6"



PART # RDL3132
AMBER REFLECTIVE TAPE 2" X 6"

**NOTE: CUT RDL3132 IN HALF (3" EACH)
AND PLACE IN THE (8)
DESIGNATED AREAS.**

POWER UNIT SPECIFICATIONS

IMPORTANT

Exceeding any of the maximum recommended prime mover specifications **CAN** result in damage to this product and **WILL** void all FFC warranties.

DESCRIPTION	SPECIFICATIONS		
SNOW PUSH	11700 Series	LAF3600 Series	11016
Weight of Prime Mover without Snow Push	11,000 lbs. maximum	20,000 lbs. maximum	32,000 lbs. maximum
Lift Capacity of Power Unit's Loader	9,500 lbs. maximum	10,000 lbs. maximum	11,000 lbs. maximum
Minimum Loader Bucket Capacity	n/a	n/a	2.5 yards
Rear Ballast	As required to maintain full prime mover stability. (Note the Shipping Weight on the specifications page, then see the operator's manual(s) for your prime mover, loader, and quick-attach for ballasting needs.)		

SNOW PUSH SPECIFICATIONS

Model Number	Overall Width	Overall Height	Overall Depth	Snow Push Shipping Weight	Pull Back Shipping Weight	Pull Back Rubber Edge Kit Shipping Weight
11773	78"	28.62"	49.3"	751 lbs.	227 lbs.	35 lbs.
11785	90"	28.62"	49.3"	822 lbs.	270 lbs.	43 lbs.
11795	102"	28.62"	49.3"	893 lbs.	288 lbs.	50 lbs.
11721	126"	28.62"	49.3"	1,035 lbs.	325 lbs.	61 lbs.
LAF3618	102"	39.5"	49.3"	1,205 lbs.	288 lbs.	50 lbs.
LAF3617	126"	39.5"	49.3"	1,425 lbs.	325 lbs.	61 lbs.
LAF3682	150"	39.5"	49.3"	1,948 lbs.	385 lbs.	70 lbs.
LAF3684	172"	39.5"	49.3"	2,118 lbs.	422 lbs.	86 lbs.
11016	198"	47"	72"	2,700 lbs.	n/a	n/a

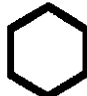






BOLT TORQUE SPECIFICATIONS

GENERAL TORQUE SPECIFICATION TABLES

Use the following charts when determining bolt torque specifications when special torques are not given. Always use grade 5 or better when replacing bolts.




SAE BOLT TORQUE SPECIFICATIONS

NOTE: The following torque values are for use with extreme pressure lubricants, plating or hard washer applications. Increase torque 15% when using hardware that is unplated and either dry or lubricated with engine oil.

		SAE GRADE 5 TORQUE				SAE GRADE 8 TORQUE				Bolt head identification marks as per grade. NOTE: Manufacturing Marks Will Vary
Bolt Size		Pounds Feet		Newton-Meters		Pounds Feet		Newton-Meters		
Inches	Millimeters	UNC	UNF	UNC	UNF	UNC	UNF	UNC	UNF	
1/4	6.35	8	9	11	12	10	13	14	18	<div>GRADE 2</div> <div></div> <div>GRADE 5</div> <div></div> <div>GRADE 8</div> <div></div>
5/16	7.94	14	17	19	23	20	25	27	34	
3/8	9.53	30	36	41	49	38	46	52	62	
7/16	11.11	46	54	62	73	60	71	81	96	
1/2	12.70	68	82	92	111	94	112	127	152	
9/16	14.29	94	112	127	152	136	163	184	221	
5/8	15.88	128	153	174	207	187	224	254	304	
3/4	19.05	230	275	312	373	323	395	438	536	
7/8	22.23	340	408	461	553	510	612	691	830	
1	25.40	493	592	668	803	765	918	1037	1245	
1-1/8	25.58	680	748	922	1014	1088	1224	1475	1660	
1-1/4	31.75	952	1054	1291	1429	1547	1700	2097	2305	
1-3/8	34.93	1241	1428	1683	1936	2023	2312	2743	3135	
1-1/2	38.10	1649	1870	2236	2535	2686	3026	3642	4103	

METRIC BOLT TORQUE SPECIFICATIONS

NOTE: The following torque values are for use with metric hardware that is unplated and either dry or lubricated with engine oil. Reduce torque 15% when using hardware that has extreme pressure lubricants, plating or hard washer applications.

Bolt head identification marks as per grade.		
		

Size of Bolt	Grade No.	Pitch (mm)	Pounds Feet	Newton-Meters	Pitch (mm)	Pounds Feet	Newton-Meters
M6	5.6	1.0	3.6-5.8	4.9-7.9	-	-	-
	8.8		5.8-4	7.9-12.7		-	-
	10.9		7.2-10	9.8-13.6		-	-
M8	5.6	1.25	7.2-14	9.8-19	1.0	12-17	16.3-23
	8.8		17-22	23-29.8		19-27	25.7-36.6
	10.9		20-26	27.1-35.2		22-31	29.8-42
M10	5.6	1.5	20-25	27.1-33.9	1.25	20-29	27.1-39.3
	8.8		34-40	46.1-54.2		35-47	47.4-63.7
	10.9		38-46	51.5-62.3		40-52	54.2-70.5
M12	5.6	1.75	28-34	37.9-46.1	1.25	31-41	42-55.6
	8.8		51-59	69.1-79.9		56-68	75.9-92.1
	10.9		57-66	77.2-89.4		62-75	84-101.6
M14	5.6	2.0	49-56	66.4-75.9	1.5	52-64	70.5-86.7
	8.8		81-93	109.8-126		90-106	122-143.6
	10.9		96-109	130.1-147.7		107-124	145-168
M16	5.6	2.0	67-77	90.8-104.3	1.5	69-83	93.5-112.5
	8.8		116-130	157.2-176.2		120-138	162.6-187
	10.9		129-145	174.8-196.5		140-158	189.7-214.1
M18	5.6	2.0	88-100	119.2-136	1.5	100-117	136-158.5
	8.8		150-168	203.3-227.6		177-199	239.8-269.6
	10.9		175-194	237.1-262.9		202-231	273.7-313
M20	5.6	2.5	108-130	146.3-176.2	1.5	132-150	178.9-203.3
	8.8		186-205	252-277.8		206-242	279.1-327.9
	10.9		213-249	288.6-337.4		246-289	333.3-391.6

SNOW PUSH MOUNTING

WARNING! READ MANUAL PRIOR TO INSTALLATION



Improper installation, operation, or maintenance of this equipment could result in serious injury or death. Operators and maintenance personnel should read this manual, as well as all manuals related to this equipment and the prime mover thoroughly before beginning installation, operation, or maintenance. **FOLLOW ALL SAFETY INSTRUCTIONS IN THIS MANUAL AND THE POWER UNIT'S MANUAL(S).**

1. Place this product on a firm, level surface that is large enough to safely accommodate this product, your prime mover and all workers involved in the mounting process.
2. Refer to the operator's manual(s) for your prime mover, loader, and quick-attach and follow the mounting instructions contained therein.
3. Carefully raise the loader and cycle the tilt cylinders to check clearances and to verify that all mounting procedures have been successfully completed.

SNOW PUSH SETUP



SAFETY FIRST!! READ AND UNDERSTAND ALL SAFETY STATEMENTS BEFORE BEGINNING ANY SNOW PUSH SETUP

PULL BACK INSTALLATION (if not assembled prior to delivery.)

1. Park your prime mover on a level surface with your Snow Push properly attached.
2. Place your prime mover's transmission in "Park" and engage the parking brake.
3. Lower your Snow Push down on to the level surface in the normal operating position.
4. Shut off your prime mover's engine, remove the starter key, wait for all moving parts to come to a stop, and relieve all pressure in the hydraulic lines.
5. Loosely connect a side wear shoe to the inside face of one of the two side plates using (3) .50" diameter by 1.75" long bolts, (6) .50" flat washers, (3) .50" lock washers, and (3) .50" hex nuts. Slide the side wear shoe forward as far as possible and tighten the nuts to 75 ft.lbs. Repeat for the other side wear shoe.
6. Restart your prime mover, raise your loader as required, roll your Snow Push forward 90°, and lower your Snow Push down upon the side wear shoes that were just installed above. Repeat the shut down procedure in step 4 above.

For 6', 7' 8', and 10' Models Only:

7. Place the pull back weldment in position and secure each arm (one for the 6' model and two for all other models) to the appropriate moldboard fib with (2) .62" diameter by 2.25" long bolts, (4) .62" flat washers, (2) lock washers, and (2) .62" hex nuts. Secure each end plate of the pull back weldment to the corresponding end plate of your Snow Push with (2) .62" diameter by 2" long bolts, (4) .62" flat washers, (2) lock washers, and (2) .62" hex nuts. Tighten the nuts to 150 ft.lbs.

SNOW PUSH SETUP (Continued)



SAFETY FIRST!! READ AND UNDERSTAND ALL SAFETY STATEMENTS BEFORE BEGINNING ANY SNOW PUSH SETUP

For 12' and 14' Models Only:

8. Install both pull back weldments in position and loosely mount the outer arms and the end plates. Position the other pull back weldment and place spacer plate and spacer washer between the left and right pull back weldment and loosely assemble the left and right pull back weldments using (3) .62" diameter by 2.50" long bolts, (6) flat washers, (3) lock washers, and (3) hex nuts.
9. Mount the center arms to the center ribs on the moldboard using (2) .62" diameter by 2.50" long bolts, (4) flat washers, (2) lock washers, and (2) nuts. Tighten all the nuts to 150 ft. lbs. on the pull back kit.
10. Restart your prime mover, raise your loader as required, roll your Snow Push back 90°, and lower your Snow Push down upon the base of your Snow Push in the normal operating position. Repeat the shut down procedure in step 4.
11. Loosen the nuts securing the side wear shoes, align the base of the shoes with base of the pull back weldment and retighten the nuts to 75 ft.lbs.

PULL BACK RUBBER EDGE KIT INSTALLATION

1. Repeat steps 1 through 4 from the PULL BACK INSTALLATION instructions.
2. Lay the rubber edge on top of the pull back weldment.
3. Lay the rubber edge strap on top of the rubber edge and loosely secure both to the pull back weldment with the appropriate number of .50" diameter by 2.50" long bolts, .50" flat washers, and .50" center dent lock nuts.
4. Adjust the rubber edge so that a maximum of 1" of the rubber edge is exposed in front of the steel plate on the pull back weldment and tighten the nuts to 75 ft.lbs.

BUCKET-LIP MOUNT INSTRUCTIONS (10', 12' and 14' models -- available for LAF3600 series only.)

1. Place this product on a firm, level surface that is large enough to safely accommodate this product, your prime mover and all workers involved in the mounting process.

IMPORTANT

Lifting this product before Step 7 (below)

CAN result in damage to this product and
WILL void all FFC warranties.

2. Carefully raise the loader arms and slowly drive forward inserting the edge of your bucket between the rectangular tubings on the Snow Push mounting.
3. Slowly roll the bucket downward (dumping) until the bucket edge is touching the lower tubes and the top of the bucket floor is touching the upper tubes, keeping the edge as close to the back of the Snow Push as possible. This will make the distance between the chain links on the Snow Push and the chain loops on your bucket as close as possible.
4. Shut off your prime mover's engine, remove the starter key, wait for all moving parts to come to a stop, and relieve all pressure in the hydraulic lines.
5. Each of the center most chains should then be inserted though the chain loops on your bucket and then reattach to itself keeping the chain as tight as possible.
6. If the bucket is wider than 80" ID, then also connect the outer two chains as well.
7. Restart your prime mover. Carefully raise the loader and cycle the rollback cylinders to verify that all mounting procedures have been successfully completed.

SNOW PUSH SETUP (Continued)



SAFETY FIRST!! READ AND UNDERSTAND ALL SAFETY STATEMENTS BEFORE BEGINNING ANY SNOW PUSH SETUP

BUCKET LIP MOUNT INSTRUCTIONS (16' large loader model 11016.)

1. Place this product on a firm, level surface that is large enough to safely accommodate this product, your prime mover and all workers involved in the mounting process.

IMPORTANT

Lifting this product before Step 7 (below)

CAN result in damage to this product and
WILL void all FFC warranties.

2. Carefully raise the loader arms and slowly drive forward inserting the edge of your bucket between the cutout slots in the Snow Push mounting ears.
3. Slowly roll the bucket downward (dumping) until the bucket edge is touching the bottom of edges the cutouts and the top of the bucket floor is touching the upper edges, keeping the bucket edge as close to the back of the Snow Push as possible. This will make the distance between the chain links on the Snow Push and the grab hooks on your bucket as close as possible.

INSTALLING THE BINDER KIT

4. Shut off your prime mover's engine, remove the starter key, wait for all moving parts to come to a stop, and relieve all pressure in the hydraulic lines.
5. Grab hooks are to be welded to the side or back corners of the prime mover's bucket. The location should be chosen so the chains will be parallel to the ground when attached. This allows for easy centering of the Snow Push on the bucket.
6. Attach one end of .38" Transport Chain sections to the right and left end of the Snow Push using .44" shackles. Drop the opposite ends into the grab hooks on the bucket leaving enough slack to attach ratchet binders and allow for centering of the Snow Push. Tighten ratchet binders.
7. Restart your prime mover. Carefully raise the loader and cycle the rollback cylinders to verify that all mounting procedures have been successfully completed. If the Snow Push is off center repeat Step #4 and adjust slack in chains to center the Snow Push. Make sure to re-tighten ratchet binders.

SNOW PUSH OPERATION



READ AND UNDERSTAND ALL SAFETY STATEMENTS

Read all safety decals and safety statements in all manuals prior to operating or working on this equipment. Know and obey all OSHA regulations, local laws, and other professional guidelines for your operation. Know and follow good work practices when assembling, maintaining, repairing, mounting, removing, or operating this equipment.

NOTICE

Moving hardened or compacted materials

CAN result in damage to this product and
WILL void all FFC warranties.

This product is designed to push loose material only. With the optional pull back attachment, loose material may also be pulled while backing with your prime mover.

The rubber edge(s) should never be positioned to where more than 1" of rubber for 1" edge or 2" for 1-1/2" thick edge, is beyond the steel backing.

SNOW PUSH MAINTENANCE



KNOW YOUR EQUIPMENT

Know your equipment's capabilities, dimensions and operations before operating. Visually inspect your equipment before you start, and never operate equipment that is not in proper working order with all safety devices intact. Check all hardware to ensure it is tight. Make certain that all locking pins, latches, and connection devices are properly installed and secured. Remove and replace any damaged, fatigued, or excessively worn parts. Make certain all safety decals are in place and are legible. Keep decals clean, and replace them if they become worn and hard to read.

BEFORE EACH USE

- Make sure that all nuts and bolts are in place and properly tightened.
- Make sure that all other fasteners are in place and are performing their specified function.
- Make sure that all safety signs are in place, are clean, and are legible.
- Replace any damaged parts and excessively worn parts.

MAINTENANCE

MAINTENANCE RECORD

Use this log to record maintenance performed on the attachment.

[illegible]

SNOW PUSH SERVICE

WARNING! DO NOT MODIFY MACHINE OR ATTACHMENTS



Modifications may weaken the integrity of the attachment and may impair the function, safety, life, and performance of the attachment. When making repairs, use only the manufacturer's genuine parts, following authorized instructions. Other parts may be substandard in fit and quality. Never modify any ROPS (Roll Over Protection Structure) or FOPS (Falling Object Protective Structure) equipment or device. Any modifications must be authorized in writing by the manufacturer.

REPLACING THE RUBBER EDGE

1. Park your prime mover on a level surface with this product properly attached.
2. Place your prime mover's transmission in "Park" and engage the parking brake.
3. Lower your Snow Push down on to the level surface.
 - a) If adjusting / replacing the rubber edge on your Snow Push, roll your Snow Push forward 90°, and lower your Snow Push down upon the front edge of the side plates or, if equipped with the Pull Back Option, down upon the side wear shoes.
 - b) If adjusting / replacing the rubber edge on the pull back weldment, lower your Snow Push down in the normal operating position.
4. Shut off your prime mover's engine, remove the starter key, wait for all moving parts to come to a stop, and relieve all pressure in the hydraulic lines.
5. Loosen the nuts that secure the rubber edge and:
 - a) If adjusting the rubber edge, move the rubber edge so that a maximum of 1" (for 1" thick rubber or 2" for 1.50" thick rubber edge) of the rubber edge is exposed beyond the steel plate. Where the rubber edge is worn down at an angle from front to back, the 1" maximum means a 1" maximum from the bottom of the rubber edge as measured along the face that is next to the steel plate.
 - b) If replacing the rubber edge, remove the rubber edge strap and the old rubber edge.
 - i. Dispose of the old rubber edge in an environmentally suitable manner.
 - ii. Lay the new rubber edge on top of the weldment.
 - iii. Lay the rubber edge strap on top of the new rubber edge and loosely secure both to the steel plate with the appropriate number of .50" diameter bolts, .50" flat washers, and .50" nuts and lockwashers.
6. Retighten the nuts to 75 ft.lbs. on 11700 Series and LAF3600 Series models and 150 ft.lbs on large loader 11016 model.

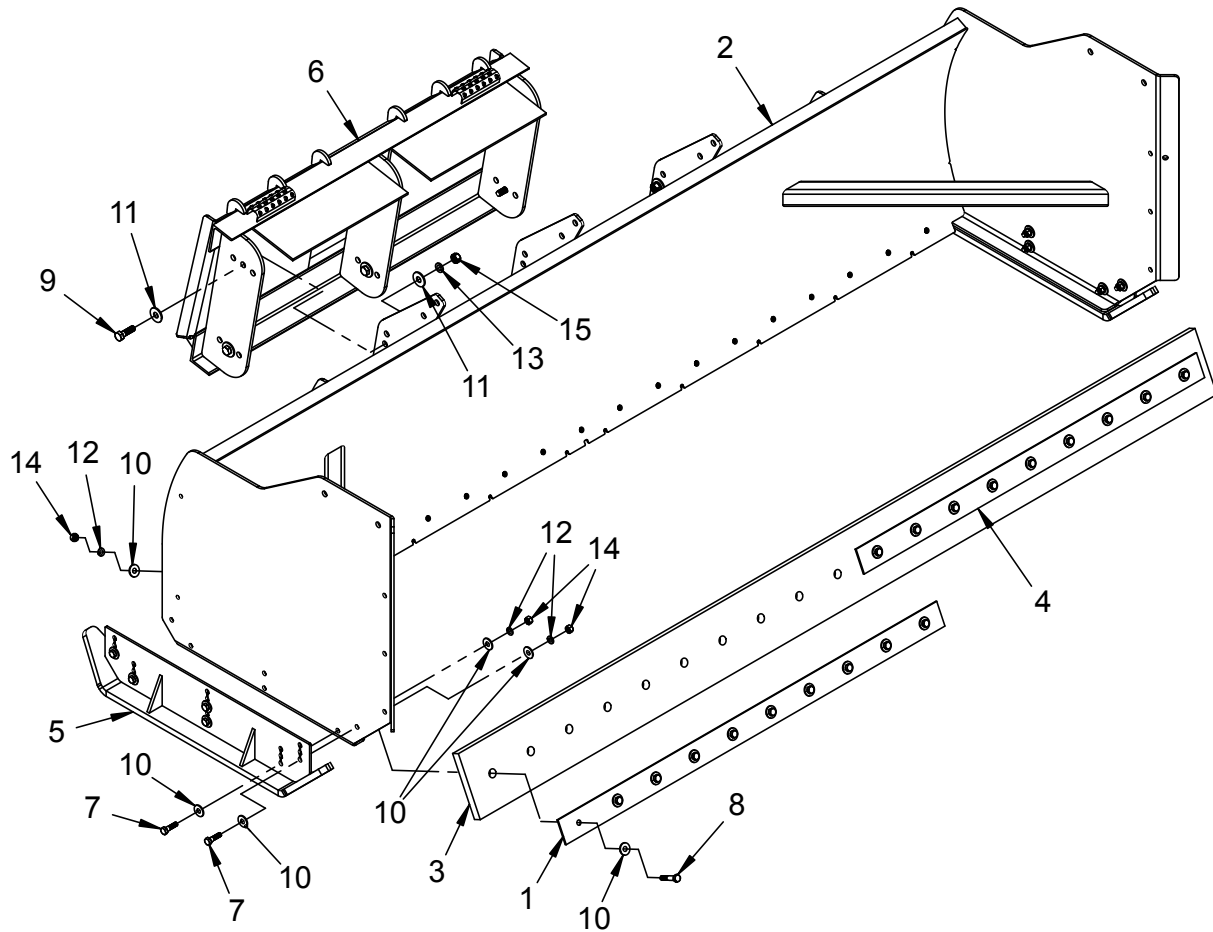
SNOW PUSH STORAGE

IMPORTANT

Prolonged pressure on the rubber edge will deform the rubber edge and decrease the effectiveness of the scraping action.

When removing this product from your prime mover, place your Snow Push such that there is no pressure on the rubber edge. Prolonged pressure on the rubber edge will deform the rubber edge and decrease the effectiveness of the scraping action.

11700 SERIES SNOW PUSH PARTS ILLUSTRATION

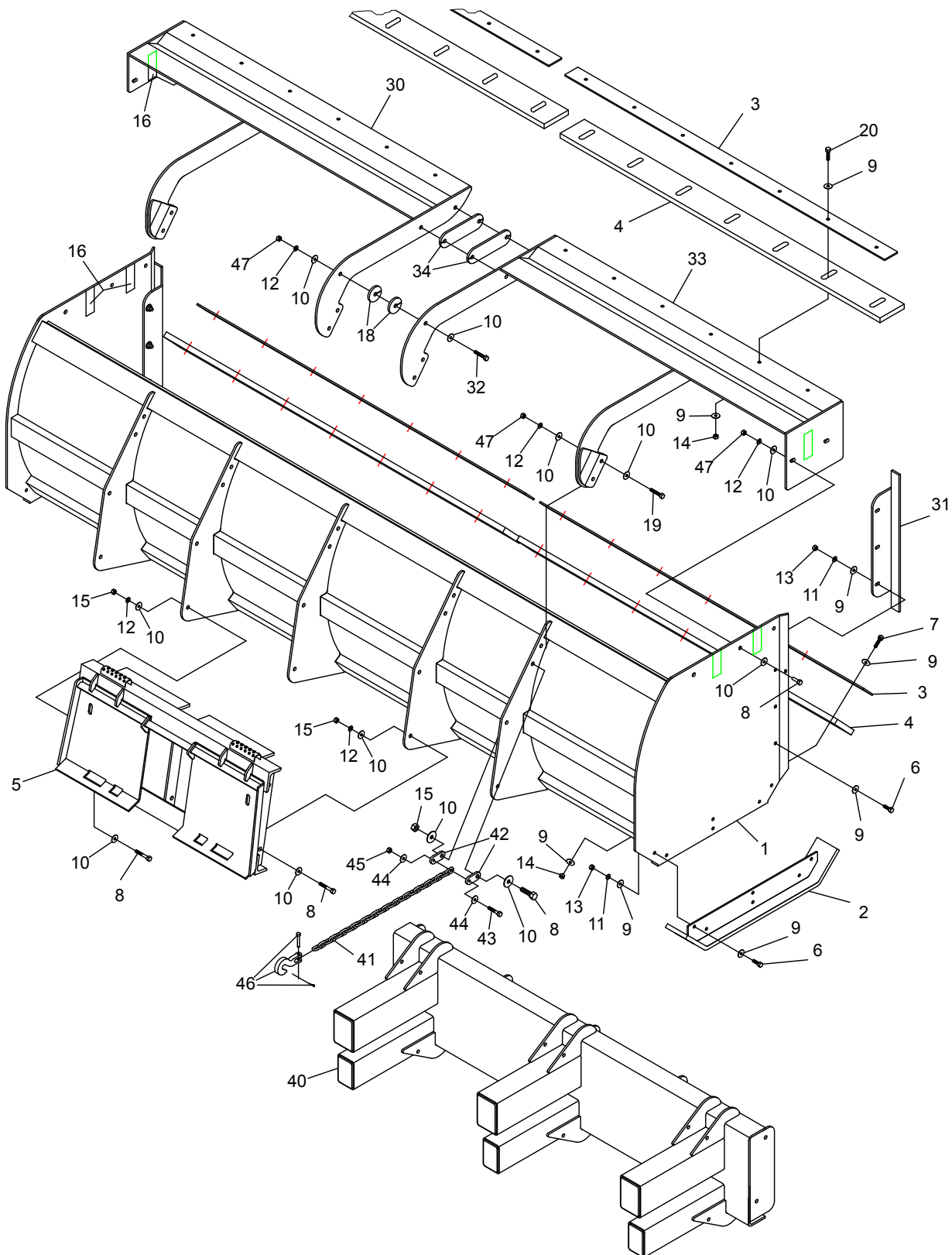


11700 SERIES SNOW PUSH PARTS LIST

ITEM	QTY	11773 6'	11785 7'	11795 8'	11721 10'	DESCRIPTION
1	1	13-52537	13-52546		13-51941	Edge Strap
2	1	13-52815	13-52817	13-52442	13-52443	Mold Board Weldment
3	1	13-52539	13-52538	13-52467	13-52468	Rubber Edge 1" x 8"
4	1	n/a	n/a	13-52476	13-52545	Edge Strap
5	2				LAF3605	Bottom Wear Shoe Weldment
6	1				LAF3624	Loader Attachment Plate
7	12				RHW1406	Grade 5 Hex Head Cap Screw .50" x 1.75" w/ Nylock Patch
8	varies	(11)	(13)	(15)	(19) P100810	Grade 5 Hex Head Cap Screw .50" x 2.50"
9	6				RHW1604	Grade 5 Hex Head Cap Screw .63" x 2"
10	varies	(46)	(50)	(54)	(62) RHW5462	Grade 5 Flat Washer USS .50"
11	12				RHW5662	Grade 5 Flat Washer USS .63"
12	varies	(23)	(25)	(27)	(31) P851108	Grade 5 Lock Washer .50"
13	6				P851110	Grade 5 Lock Washer .63"
14	varies	(23)	(25)	(27)	(31) RHW7401	Grade 5 Hex Nut .50"
15	6				RHW7603	Grade 5 Center Dent Lock Nut .63"

NOTE: All parts are the same as 11721 except for those parts numbered under the other models.

LAF3600 SERIES SNOW PUSH PARTS ILLUSTRATION

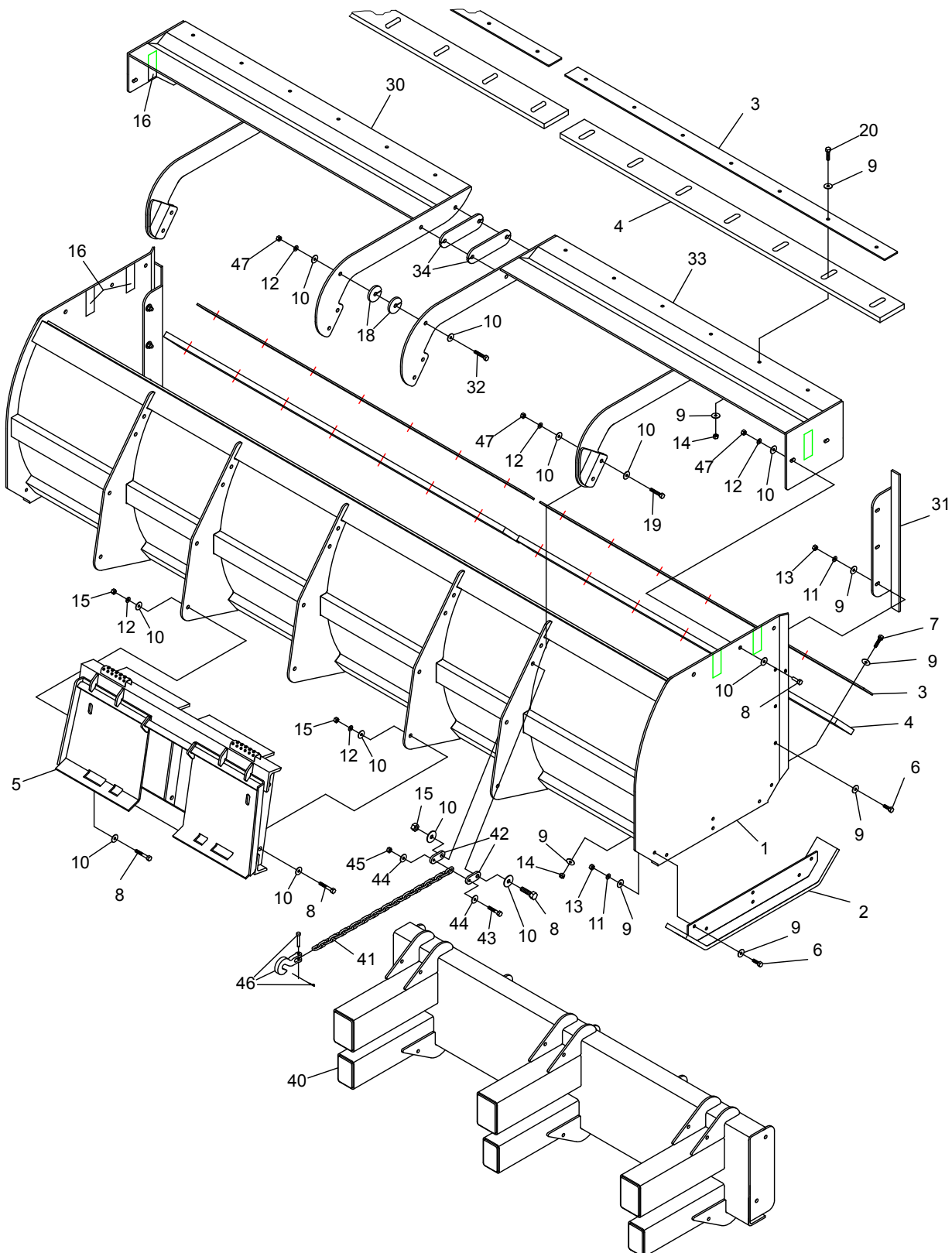


LAF3600 SERIES SNOW PUSH PARTS LIST

ITEM	QTY	LAF3618 8'	LAF3617 10'	LAF3682 12'	LAF3684 14'	DESCRIPTION
1	1	LAF3623	LAF3603	13-16486-12	13-16486-14	Mold Board Weldment
2	2				LAF3605	Bottom Wear Shoe Weldment
3	2	LAF9408	LAF9409	LAF9410	LAF9408	Edge Strap
	1	n/a	n/a	n/a	LAF9410	
4	1	LAF3667	LAF3668	13-52879	13-52880	Rubber Edge 1.50" x 10"
5	1	LAF3624	LAF3624	n/a	n/a	Attachment Plate - Skid Steer
					LAF3633	Attachment Plate - Loader
6	12				RHW1406	Grade 5 Hex Head Cap Screw .50" x 1.75" w/ Nylock Patch
7	varies	(8)	(10)	(12)	(14) RHW1413	Grade 5 Hex Head Cap Screw .50" x 3.50"
8	varies	(6) RHW1604	(6) RHW1604	(12) P101010	(12) P101010	Grade 5 Hex Head Cap Screw .63" x 2" or 2.50"
9	varies	(40)	(44)	(48)	(48) RHW5462	Grade 5 Flat Washer USS .50"
10	varies	(12)	(12)	(24)	(24) RHW5662	Grade 5 Flat Washer USS .63"
11	12				P851108	Grade 5 Lock Washer .50"
12	varies	(6)	(6)	(12)	(12) P851110	Grade 5 Lock Washer .63"
13	12				RHW7401	Grade 5 Hex Nut .50"
14	varies	(8)	(10)	(12)	(14) RHW7403	Grade 5 Center Dent Lock Nut .50"
15	varies	(6)	(6)	(12)	(12) RHW7603	Grade 5 Center Dent Lock Nut .63"
16	4				RDL3132	Amber Reflective Tape 2" x 6"

NOTE: All parts are the same as LAF3684 except for those parts numbered under the other models.

LAF3600 SERIES SNOW PUSH PARTS ILLUSTRATION



PULL BACK PARTS LIST (6', 7', 8' & 10')

ITEM	QTY	LAF3613 6'	LAF3612 7'	LAF3611 8'	LAF3602 10'	DESCRIPTION
6	6				RHW1406	Grade 5 Hex Head Cap Screw .50" x 1.75" w/ Nylock Patch
8	4				RHW1604	Grade 5 Hex Head Cap Screw .63" x 2"
9	12				RHW5462	Grade 5 Flat Washer USS .50"
10	varies	(12)	(16)	(16)	(16) RHW5662	Grade 5 Flat Washer USS .63"
11	6				P851108	Grade 5 Lock Washer .50"
12	varies	(6)	(8)	(8)	(8) P851110	Grade 5 Lock Washer .63"
13	6				RHW7401	Grade 5 Hex Nut .50"
16	2				RDL3132	Amber Reflective Tape 2" x 6"
19	varies	(2)	(4)	(4)	(4) RHW1605	Grade 5 Hex Head Cap Screw .63" x 2.25"
30	1	LAF3627	LAF3628	LAF3621	LAF3601	Pull Back Weldment
31	2				LAF3604	Side Wear Shoe
47	varies	(6)	(8)	(8)	(8) RHW7601	Grade 5 Hex Nut .63"

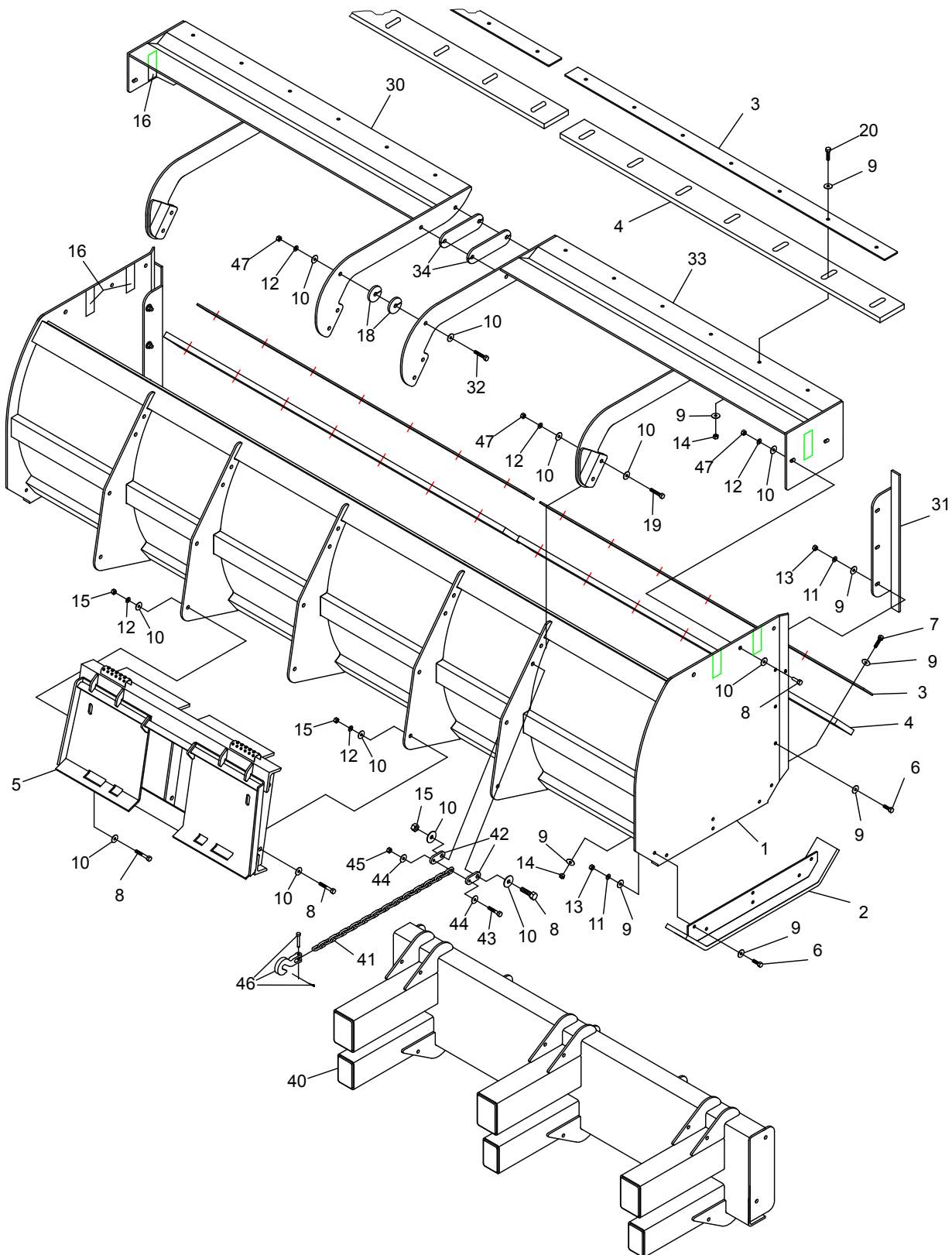
NOTE: All parts are the same as LAF3602 except for those parts numbered under the other models.

PULL BACK PARTS LIST (12' & 14')

ITEM	QTY	LAF3651 12'	LAF3653 14'	DESCRIPTION
6	6		RHW1406	Grade 5 Hex Head Cap Screw .50" x 1.75" w/ Nylock Patch
8	4		RHW1604	Grade 5 Hex Head Cap Screw .63" x 2"
9	12		RHW5462	Grade 5 Flat Washer USS .50"
10	22		RHW5662	Grade 5 Flat Washer USS .63"
11	6		P851108	Grade 5 Lock Washer .50"
12	11		P851110	Grade 5 Lock Washer .63"
13	6		RHW7401	Grade 5 Hex Nut .50"
16	4		RDL3132	Amber Reflective Tape 2" x 6"
18	2		LAF9436	Spacer Washer
19	4		RHW1605	Grade 5 Hex Head Cap Screw .63" x 2.25"
30	1	LAF3658	LAF3664	Pull Back Weldment (Left)
31	2		LAF3604	Side Wear Shoe
32	5		P101010	Grade 5 Hex Head Cap Screw .63" x 2.50"
33	1	LAF3659	LAF3663	Pull Back Weldment (Right)
34	2		LAF9435	Spacer Plate
47	11		RHW7601	Grade 5 Hex Nut .63"

NOTE: All parts are the same as LAF3653 except for those parts numbered under the other models.

LAF3600 SERIES SNOW PUSH PARTS ILLUSTRATION



PULL BACK RUBBER EDGE KIT PARTS LIST (6', 7', 8' & 10')

ITEM	QTY	LAF3632 6'	LAF3631 7'	LAF3630 8'	LAF3629 10'	DESCRIPTION
3	varies	(1) LAF9410	(1) LAF9407 (1) LAF9408	(2) LAF9408	(2) LAF9409	Edge Strap
4	1	LAF3665	LAF3666	LAF3667	LAF3668	Rubber Edge
9	varies	(12)	(14)	(16)	(20) RHW5462	Grade 5 Flat Washer USS .50"
14	varies	(6)	(7)	(8)	(10) RHW7403	Grade 5 Lock Nut .50"
20	varies	(6)	(7)	(8)	(10) RHW1413	Grade 5 Hex Head Cap Screw .50" x 3.50"

NOTE: All parts are the same as LAF3629 except for those parts numbered under the other models.

PULL BACK RUBBER EDGE KIT PARTS LIST (12' & 14')

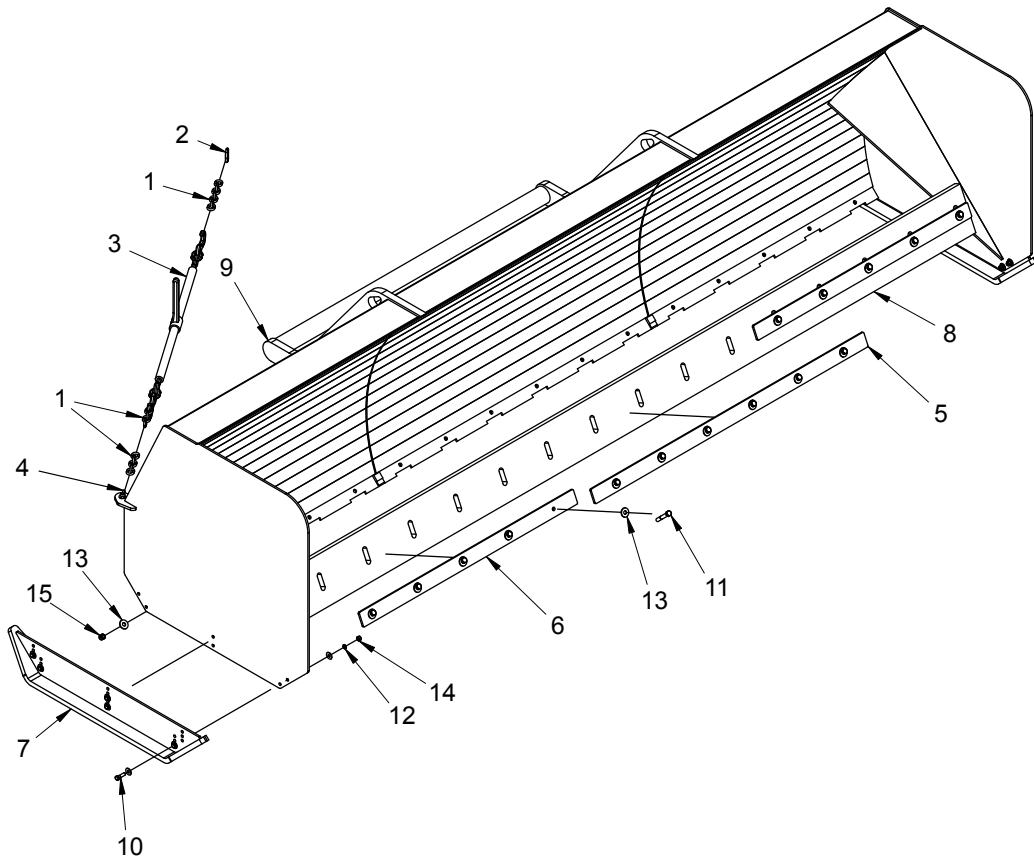
ITEM	QTY	LAF3649 12'	LAF3650 14'	DESCRIPTION
3	varies	(2) LAF9410	(2) LAF9407 (2) LAF9408	Edge Strap
4	2	LAF3616	LAF3660	Rubber Edge
9	varies	(24)	(28) RHW5462	Grade 5 Flat Washer USS .50"
14	varies	(12)	(14) RHW7403	Grade 5 Lock Nut .50"
20	varies	(12)	(14) RHW1413	Grade 5 Hex Head Cap Screw .50" x 3.50"

NOTE: All parts are the same as LAF3653 except for those parts numbered under the other models.

BUCKET LIP MOUNT for 10', 12' & 14' SNOW PUSH PARTS LIST

ITEM	QTY	LAF3617 10'	LAF3682 12'	LAF3684 14'	DESCRIPTION
8	4			RHW1604	Grade 5 Hex Head Cap Screw .63" x 2"
10	8			RHW5662	Grade 5 Flat Washer USS .63"
15	4			RHW7603	Grade 5 Lock Nut .63"
40	1	LAF3670	13-16493-12	13-16493-14	Bucket Mount
41	4			LAF3671	Grade 40 Chain .31" x 60"
42	8			LAF3672	Chain Link
43	4			07-3657	Grade 8 Hex Head Cap Screw .38" x 2"
44	8			RHW5262	Grade 5 Flat Washer USS .38"
45	4			RHW7203	Grade 5 Lock Nut .38"
46	4			RHW8228	Grade 40 Grab Hook .31" Clevis End

11016 SNOW PUSH PARTS ILLUSTRATION



OPTIONAL BINDER/CHAIN KIT PARTS LIST

ITEM	QTY	11000	DESCRIPTION
1	176	07-6243	Chain .38" Bulk Gr 70 Transport
2	2	07-6445	Hook Grab Weldable .50" Opening
3	2	07-6446	Binder Ratchet Type w/Grab Hooks f/ .38" Chain
4	2	07-7447	Shackle Chain .44" Galv.

SNOW PUSH PARTS LIST (16')

ITEM	QTY	11016 16'	DESCRIPTION
5	1	13-50636	Rubber Edge Strap 6'
6	2	13-50637	Rubber Edge Strap
7	2	13-50638	Skid Shoe Weldment
8	1	13-50643	Rubber Edge
9	1	13-50644	Mold Board
10	12	07-3671	Grade 8 Hex Head Cap Screw .50" x 1.75" YDC
11	16	07-3682	Grade 8 Hex Head Cap Screw .63" x 4" YDC
12	24	07-0156	Grade 8 Flat Washer .50" YDC
13	32	07-3120	Grade 8 Flat Washer .63" YDC
14	12	07-4037	Grade 8 Hex Nylock Nut .50" YDC
15	16	07-4031	Grade 8 Hex Nylock Nut .63" YDC

WARRANTY

Limited Warranty

Except for the Excluded Products as described below, all new products are warranted to be free from defects in material and/or workmanship during the Warranty Period, in accordance with and subject to the terms and conditions of this Limited Warranty.

1. Excluded Products. The following products are excluded from this Limited Warranty:

(a) Any cable, part that engages with the ground (i.e. sprockets), digging chain, bearing, teeth, tamping and/or demolition head, blade cutting edge, pilot bit, auger teeth and broom brush that either constitutes or is part of a product.

(b) Any product, merchandise or component that, in the opinion of Paladin Light Construction¹, has been (i) misused; (ii) modified in any unauthorized manner; (iii) altered; (iv) damaged; (v) involved in an accident; or (vi) repaired using parts not obtained through Paladin Light Construction.

2. Warranty Period. The Limited Warranty is provided only to those defects that occur during the Warranty Period, which is the period that begins on the first to occur of: (i) the date of initial purchase by an end-user, (ii) the date the product is first leased or rented, or (iii) the date that is six (6) months after the date of shipment by Paladin Light Construction as evidenced by the invoiced shipment date (the "Commencement Date") and ends on the date that is twelve (12) months after the Commencement Date.

3. Terms and Conditions of Limited Warranty. The following terms and conditions apply to the Limited Warranty hereby provided:

(a) Option to Repair or Replace. Paladin Light Construction shall have the option to repair or replace the product.

(b) Timely Repair and Notice. In order to obtain the Limited Warranty, (i) the product must be repaired within thirty (30) days from the date of failure, and (ii) a claim under the warranty must be submitted to Paladin Light Construction in writing within thirty (30) days from the date of repair.

(c) Return of Defective Part or Product. If requested by Paladin Light Construction, the alleged defective part or product shall be shipped to Paladin Light Construction at its manufacturing facility or other location specified by Paladin Light Construction, with freight PRE-PAID by the claimant, to allow Paladin Light Construction to inspect the part or product.

Claims that fail to comply with any of the above terms and conditions shall be denied.

LIMITATIONS AND EXCLUSIONS.

THIS LIMITED WARRANTY IS IN LIEU OF ALL OTHER WARRANTIES, EXPRESS OR IMPLIED, INCLUDING WITHOUT LIMITATION THE WARRANTIES OF MERCHANTABILITY, FITNESS FOR A PARTICULAR PURPOSE AND ANY WARRANTY BASED ON A COURSE OF DEALING OR USAGE OF TRADE.

IN NO EVENT SHALL PALADIN LIGHT CONSTRUCTION BE LIABLE FOR CONSEQUENTIAL OR SPECIAL DAMAGES.

IN NO EVENT SHALL PALADIN LIGHT CONSTRUCTION BE LIABLE FOR ANY LOSS OR CLAIM IN AN AMOUNT IN EXCESS OF THE PURCHASE PRICE, OR, AT THE OPTION OF PALADIN LIGHT CONSTRUCTION, THE REPAIR OR REPLACEMENT, OF THE PARTICULAR PRODUCT ON WHICH ANY CLAIM OF LOSS OR DAMAGE IS BASED. THIS LIMITATION OF LIABILITY APPLIES IRRESPECTIVE OF WHETHER THE CLAIM IS BASED ON BREACH OF CONTRACT, BREACH OF WARRANTY, NEGLIGENCE OR OTHER CAUSE AND WHETHER THE ALLEGED DEFECT IS DISCOVERABLE OR LATENT.

¹Attachment Technologies Inc., a subsidiary of Paladin Brands Holding, Inc. (PBHI) is referred to herein as Paladin Light Construction.

