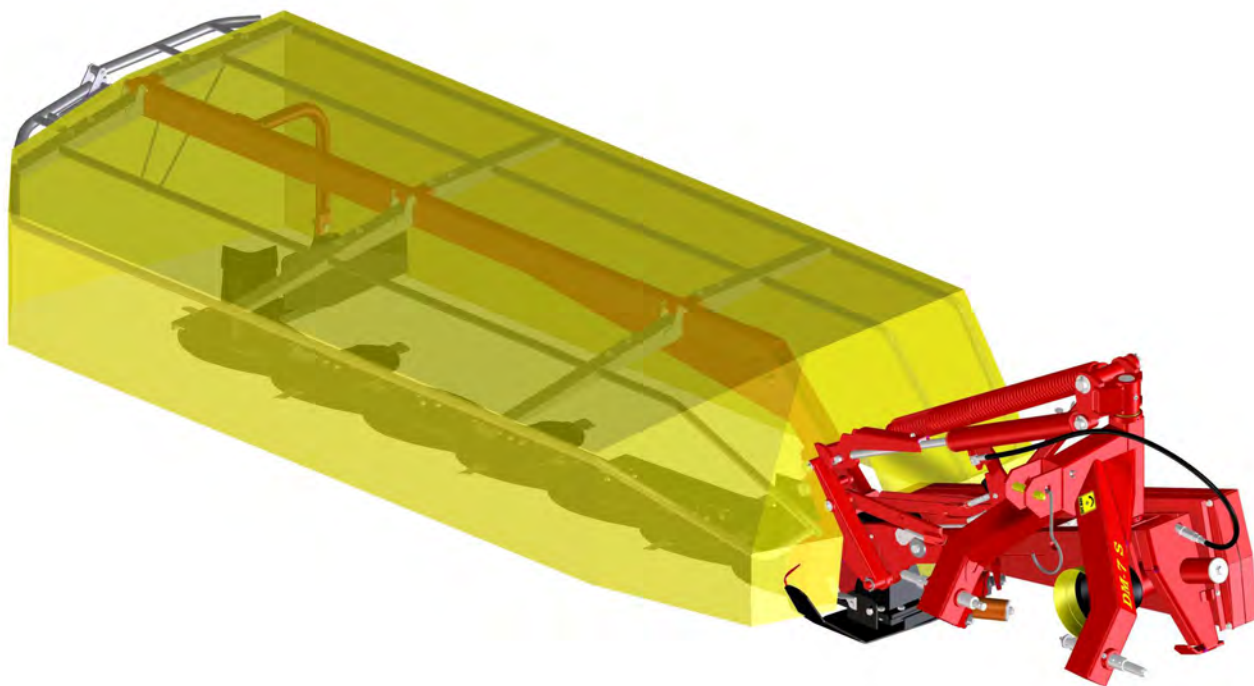




AGRICULTURAL MACHINERY  
**sitrex**®  
Spa

**ASSEMBLY, USE AND  
MAINTENANCE  
SPARE PARTS LIST**



**DM 6-7-8 S**



---

## TABLE OF CONTENT

SECTION 1	SPARE PARTS LIST	1
SECTION 2	GENERAL INFORMATION	29
2.1	WARRANTY	29
SECTION 3	GUIDE TO THE SIGNS AND SYMBOLS USED IN THIS MANUAL AND THEIR LOCATION ON THE MACHINE	30
3.1	SIGNS AND SYMBOLS	30
3.2	WARNING AND DANGER SIGNS	30
3.3	INDICATION SIGNS	31
SECTION 4	GENERAL SUMMARY OF SAFETY AND ACCIDENT - PREVENTION INSTRUCTIONS	32
4.1	GENERAL SUMMARY OF SAFETY AND ACCIDENT-PREVENTION INSTRUCTIONS	32
SECTION 5	PRODUCT IDENTIFICATION	35
5.1	TRACTOR REQUIREMENTS	35
5.2	MACHINE TECHNICAL DATA	35
5.3	MACHINE IDENTIFICATION DATA	35
SECTION 6	ASSEMBLY	36
6.1	TECHNICAL NOTES	36
6.2	INSTRUCTIONS ON HOW TO ASSEMBLE	37
SECTION 7	INSTRUCTIONS FOR INSTALLATION AND USE	46
7.1	HOW TO ADAPT TO THE TRACTOR	46
7.2	Adjustment of the height of the frame above the ground	47
7.3	HOW TO ADAPT THE CARDAN SHAFT	48
7.4	PUTTING IN THE TRANSPORT POSITION	49
7.5	PUTTING IN THE WORK POSITION	50
7.6	USE OF THE DISC MOWER	51
7.7	HOW TO DISCONNECT THE MACHINE	52
SECTION 8	ADJUSTMENTS AND SET-UP	53
8.1	BELT TENSION	53
8.2	CUTTING HEIGHT	53
8.3	HYDRAULIC FLOW ADJUSTER	53
8.4	SPRING TENSION	54
8.5	SAFETY DEVICE	54
SECTION 9	FAULTS: REASONS AND REMEDIES	55
9.1	The disk carrier bar vibrates too much during work:	55
9.2	The disk carrier bar does not adapt correctly to uneven ground:	55
9.3	The disk carrier bar is not raised parallel to the ground:	55
9.4	7.4 Earth accumulates between two sliding blocks in the front part of the disk carrier bar	55
9.5	Safety device (fig. 8.5) often unhooks under impact:	55
9.6	The stubble is too high or too sparse:	55
9.7	The stubble is not the same height all along the cutting width:	55
9.8	The forage is pushed forward before being cut:	55
SECTION 10	MAINTENANCE	56
10.1	HOW TO FASTEN CUTTING DEVICES	56
10.2	HOW TO CHECK THE MOWING DEVICES	57
10.3	GENERAL MAINTENANCE	57
10.4	LUBRICATION	58
10.5	END OF SEASON STORAGE	59

---



SECTION 1 SPARE PARTS LIST

DM6 TABLE NO. 910.148

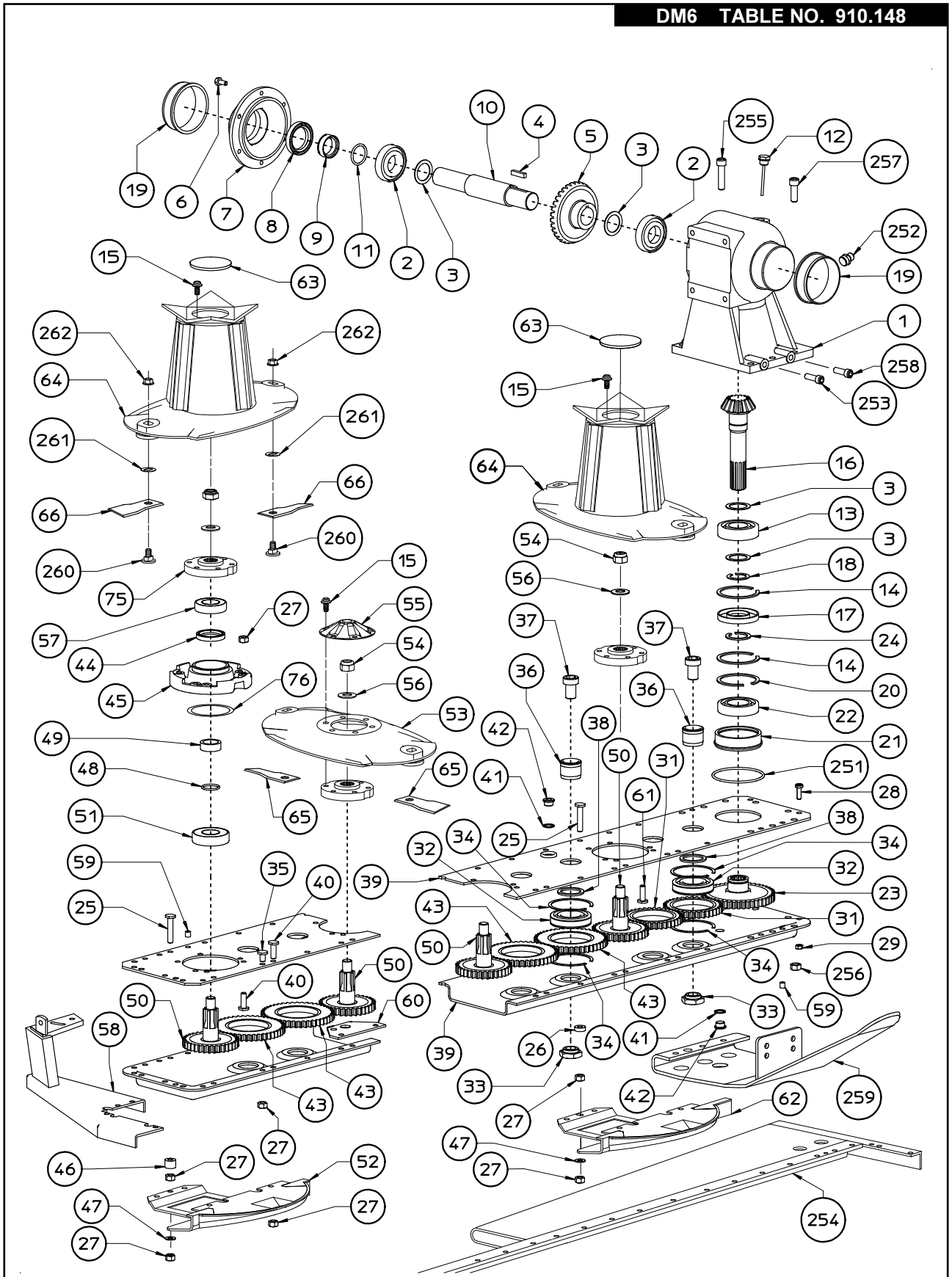


TABLE NO. 910.148				
DM-6				
ITEM	Q.TY	PART/NO	DESCRIPTION	NOTE
1	1	100.882	GEAR BOX CASING	
2	2	620.129	BEARING	
3	4	100.883	WASHER	
4	1	620.141	TAB	
5	1	100.772	BEVEL GEAR	
6	8	620.130	SCREW	
7	1	100.770	COVER	
8	1	620.156	OIL SEAL	
9	1	100.884	BUSH	
10	1	100.771	DRIVING SHAFT	
11	1	620.171	RING OR	
12	1	100.774	PLUG	
13	1	620.172	BEARING	
14	2	620.148	SNAP RING	
15	36	620.244	SCREW	
16	1	100.773	SPROCKET	
17	1	620.161	SEAL	
18	1	620.145	RING	
19	2	610.232	BUSH	
20	1	620.148	SNAP RING	
21	1	100.885	BEARING BUSH	
22	1	620.173	BEARING	
23	1	100.779	GEAR	
24	1	620.146	SNAP RING	
25	6	100.783	SCREW	
26	4	100.792	DISTANCE	
27	102	620.136	NUT	
28	4	620.131	SCREW	
29	4	620.174	NUT	
31	2	100.801	GEAR	
32	12	620.126	BEARING	
33	12	100.798	NUT	
34	24	100.804	SNAP RING	
35	24	100.787	SCREW	
36	12	100.797	DISTANCE PIN	
37	12	100.786	SCREW	
38	12	100.785	DISTANCE	
39	1	100.887	SUPPORT (UPPER+LOWER)	
40	62	100.782	SCREW	
41	3	620.175	WASHER	
42	3	100.789	PLUG	
43	10	100.802	GEAR	
44	6	620.159	SEAL	
45	6	100.799	DISC SUPPORT	
46	2	100.793	DISTANCE	

TABLE NO. 910.148				
DM-6				
ITEM	Q.TY	PART/NO	DESCRIPTION	NOTE
47	6	100.795	WASHER	
48	6	620.165	RING OR	
49	6	100.803	BUSH	
50	6	100.800	GEAR	
51	6	620.176	BEARING	
52	5	100.995	SUPPORT	
53	4	110.463	DISC	
54	6	620.139	NUT	
55	4	100.996	COVER	
56	6	620.150	WASHER	
57	6	620.128	BEARING	
58	1	110.127	SUPPORT DEFLEKTOR	
59	2	620.143	SPRING PIN	
60	1	100.890	HOOK	
61	4	100.790	SCREW	
62	1	110.001	SUPPORT	
63	2	100.791	PLUG	
64	2	110.464	DISC CONVEY	
65	6	100.367	CLOCK-WISE KNIFE	
66	6	100.366	CONTERCLOCK-WISE KNIFE	
75	6	100.993	SUPPORT	
251	1	620.164	RING OR	
252	1	620.152	PLUG	
253	1	620.245	SCREW	
254	1	110.380	REAR REINFORCEMENT	
255	3	620.243	SCREW	
256	8	620.137	NUT	
257	5	620.133	SCREW	
258	1	620.134	SCREW	
259	1	100.986	SUPPORT	
260	12	100.796	SCREW	
261	12	100.821	WASHER	
262	12	100.794	NUT	

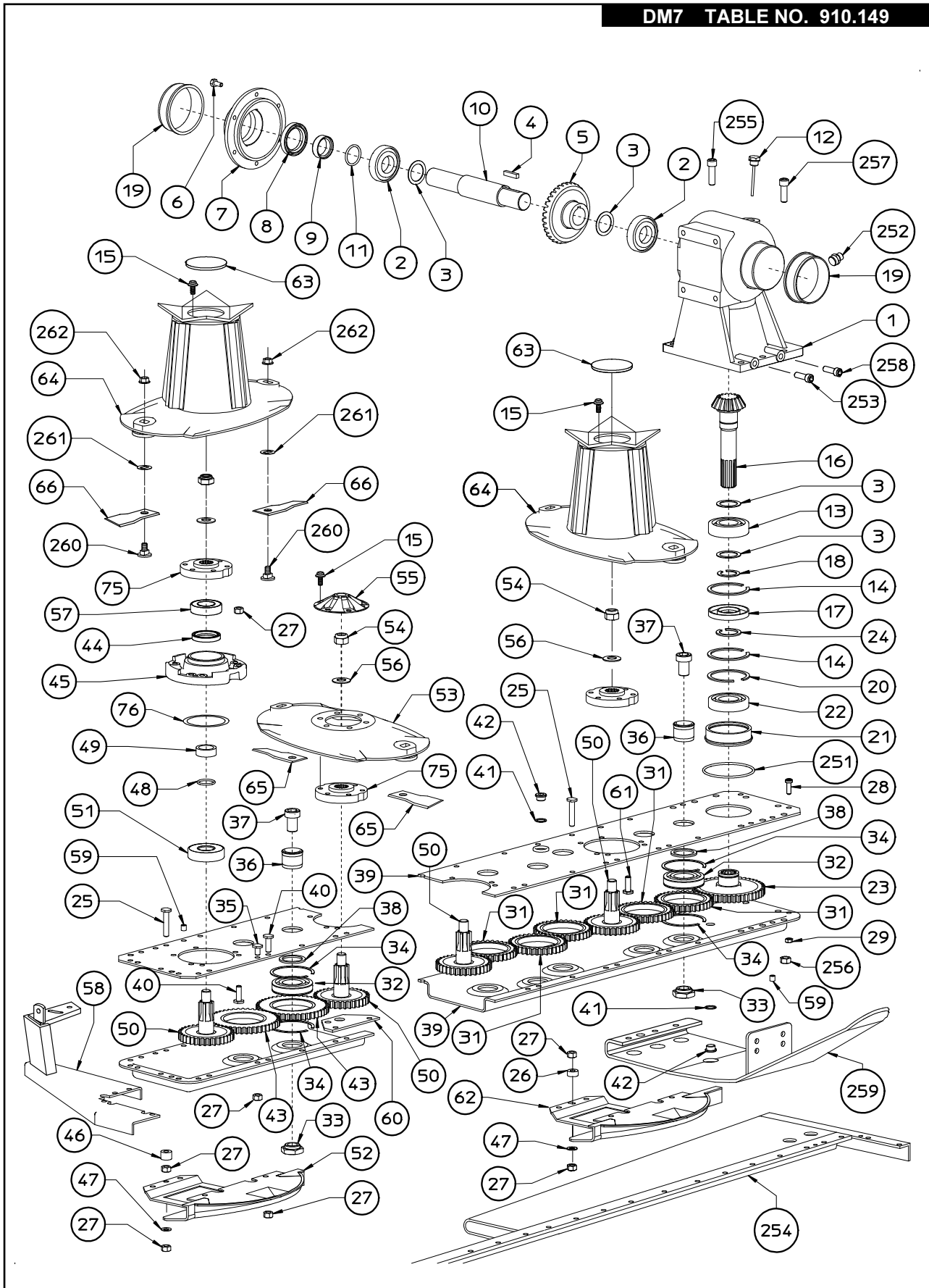


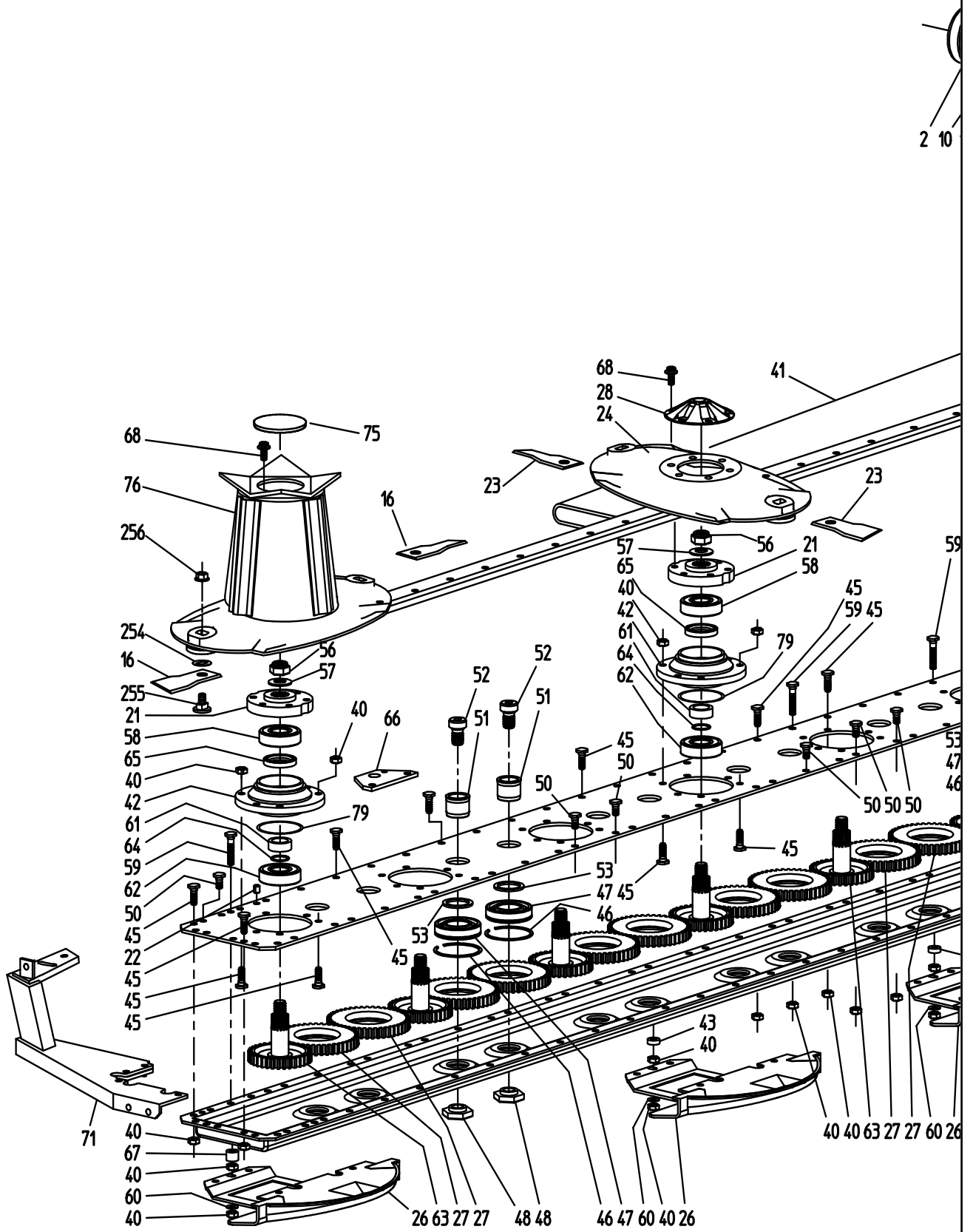


TABLE NO. 910.149				
DM-7				
ITEM	Q.TY	PART/NO	DESCRIPTION	NOTE
1	1	100.992	GEAR BOX CASING	
2	2	620.129	BEARING	
3	4	100.883	WASHER	
4	1	620.141	TAB	
5	1	100.772	BEVEL GEAR	
6	8	620.130	SCREW	
7	1	100.770	COVER	
8	1	620.156	OIL SEAL	
9	1	100.884	BUSH	
10	1	100.771	DRIVING SHAFT	
11	1	620.171	RING OR	
12	1	100.774	PLUG	
13	1	620.172	BEARING	
14	2	620.148	SNAP RING	
15	42	620.244	SCREW	
16	1	100.773	SPROCKET	
17	1	620.161	SEAL	
18	1	620.145	RING	
19	2	610.232	BUSH	
20	1	620.148	SNAP RING	
21	1	100.885	BEARING BUSH	
22	1	620.173	BEARING	
23	1	100.779	GEAR	
24	1	620.146	SNAP RING	
25	7	100.783	SCREW	
26	4	100.792	SCREW	
27	118	620.136	NUT	
28	4	620.131	SCREW	
29	4	620.174	NUT	
31	5	100.801	GEAR	
32	15	620.126	BEARING	
33	15	100.798	NUT	
34	30	100.804	SNAP RING	
35	31	100.787	SCREW	
36	15	100.797	DISTANCE PIN	
37	15	100.786	SCREW	
38	15	100.785	DISTANCE	
39	1	100.886	SUPPORT (UPPER+LOWER)	
40	71	100.782	SCREW	
41	3	620.175	WASHER	
42	3	100.789	PLUG	
43	10	100.802	GEAR	
44	7	620.159	SEAL	
45	7	100.799	DISC SUPPORT	
46	6	100.793	DISTANCE	

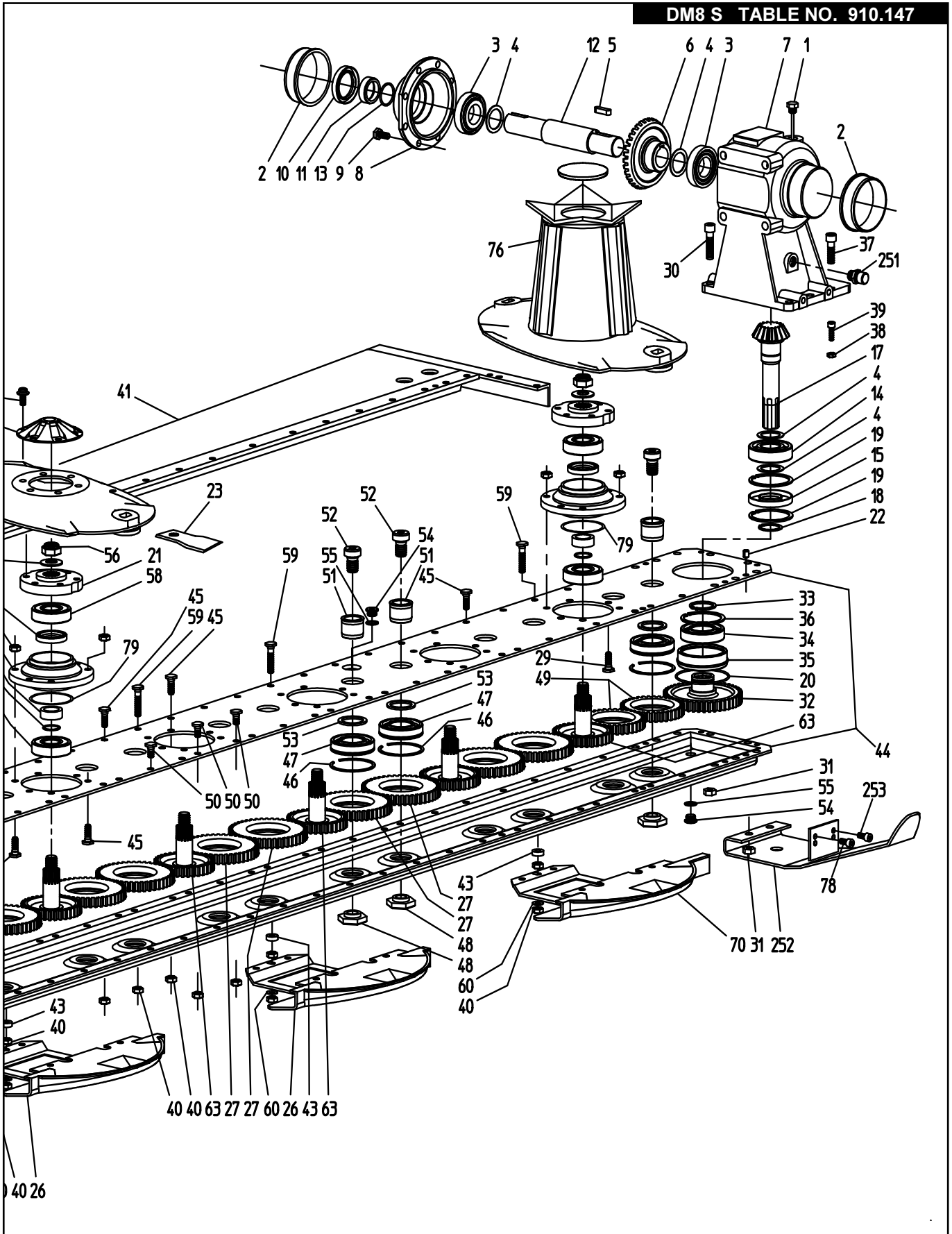
TABLE NO. 910.149				
DM-7				
ITEM	Q.TY	PART/NO	DESCRIPTION	NOTE
47	7	100.795	WASHER	
48	7	620.165	RING OR	
49	7	100.803	BUSH	
50	7	100.800	GEAR	
51	7	620.176	BEARING	
52	5	100.995	SUPPORT	
53	5	110.463	DISC	
54	7	620.139	NUT	
55	5	100.996	COVER	
56	7	620.150	WASHER	
57	7	620.128	BEARING	
58	1	110.127	SUPPORT DEFLEKTOR	
59	2	620.143	SPRING PIN	
60	1	100.890	HOOK	
61	7	100.790	SCREW	
62	2	110.001	SUPPORT	
63	2	100.791	PLUG	
64	2	110.464	DISC CONVEY	
65	8	100.367	CLOCK-WISE KNIFE	
66	6	100.366	CONTERCLOCK-WISE KNIFE	
75	7	100.993	SUPPORT	
251	1	620.164	RING OR	
252	1	620.152	PLUG	
253	1	620.245	SCREW	
254	1	110.379	REAR REINFORCEMENT	
255	3	620.243	SCREW	
256	8	620.137	NUT	
257	5	620.133	SCREW	
258	2	620.134	SCREW	
259	1	100.986	SUPPORT	
260	14	100.796	SCREW	
261	14	100.821	WASHER	
262	14	100.794	NUT	



DM8 S TABLE NO. 910.147



DM8 S TABLE NO. 910.147



DM8 S TABLE NO. 910.147				
Item Pos.	Part No. Code	Q.tè Q.ty	DESCRIPTION	NOTE
1	100.774	1	PLUG	
2	610.232	2	BUSHING	
3	620.129	2	BEARING	
4	100.883	4	WASHER	
5	620.141	1	TAB	
6	100.772	1	BEVEL GEAR	
7	100.992	1	GEAR BOX CASING	
8	100.770	1	COVER	
9	620.130	8	SCREW	
10	620.156	1	OIL SEAL	
11	100.884	1	BUSH	
12	100.771	1	DRIVING SHAFT	
13	620.171	1	RING OR	
14	620.172	1	BEARING	
15	620.161	1	SEAL	
16	100.366	8	COUNTERCLOCK-WISE KNIFE	
17	100.773	1	SPROCKET	
18	620.145	1	RING	
19	620.148	2	SNAP RING	
20	620.164	1	O-RING GASKET	
21	100.993	8	DISC SUPPORT	
22	620.143	2	SPRING PIN	
23	100.367	8	CLOCK-WISE KNIFE	
24	110.463	6	CUTTING DISC	
26	100.995	7	SLIDING SUPPORT	
27	100.802	14	GEAR	
28	100.996	1	DISC COVER	
29	100.790	1	SCREW	
30	620.243	3	SCREW	
31	620.137	8	NUT	
32	100.779	1	GEAR	
33	620.146	1	SNAP RING	
34	620.173	1	BEARING	
35	100.885	1	BEARING BUSH	
36	620.148	1	SNAP RING	
37	620.133	5	SCREW	
38	620.174	4	NUT	
39	620.131	4	SCREW	
40	620.136	128	NUT	
41	100.997	1	REAR REINFORCEMENT	
42	110.418	8	BEARING DISC SUPPORT	
43	100.792	6	SPACER	
44	100.998	1	SUPPORT (UPPER+LOWER)	
45	100.782	97	SCREW	
46	100.804	16	SNAP RING	

DM8 S TABLE NO. 910.147				
Item Pos.	Part No. Code	Q.ty Q.tè	DESCRIPTION	NOTE
47	620.126	16	BEARING	
48	100.798	16	NUT	
49	100.801	2	GEAR	
50	100.787	31	SCREW	
51	100.797	16	DISTANCE PIN	
52	100.786	16	SCREW	
53	100.785	16	DISTANCE	
54	100.789	2	PLUG	
55	620.175	2	WASHER	
56	620.139	8	NUT	
57	620.150	8	WASHER	
58	620.128	8	BEARING	
59	100.783	8	SCREW	
60	100.795	8	WASHER	
61	100.803	8	BUSH	
62	620.176	8	BEARING	
63	100.800	8	GEAR	
64	620.165	8	RING OR	
65	620.159	8	SEAL	
66	100.890	1	HOOK	
67	100.793	2	DISTANCE	
68	620.244	48	SCREW	
70	110.001	1	SLIDING SUPPORT	
71	110.127	1	DISC SUPPORT	
75	100.791	2	PLUG	
76	110.464	2	DISC + CONVEY	
77	500.056	1	PLUG	
78	620.245	1	SCREW	
79	630.576	8	RING OR	
251	620.152	1	PLUG	
252	100.986	1	SLIDING SUPPORT	
253	620.134	1	SCREW	
254	100.821	16	WASHER	
255	100.796	16	SCREW	
256	100.794	16	NUT	

TABLE NO. 910.150

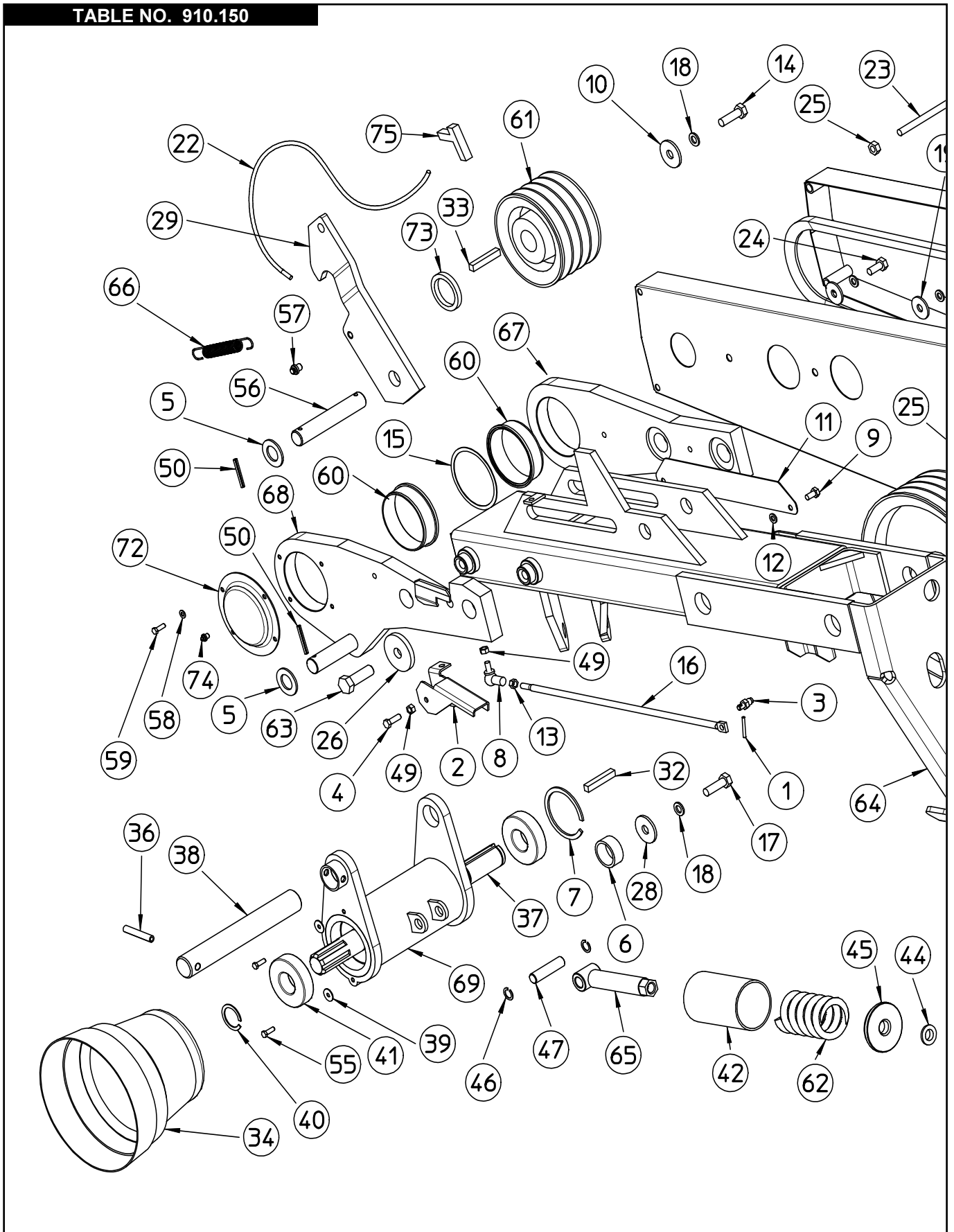




TABLE NO. 910.150

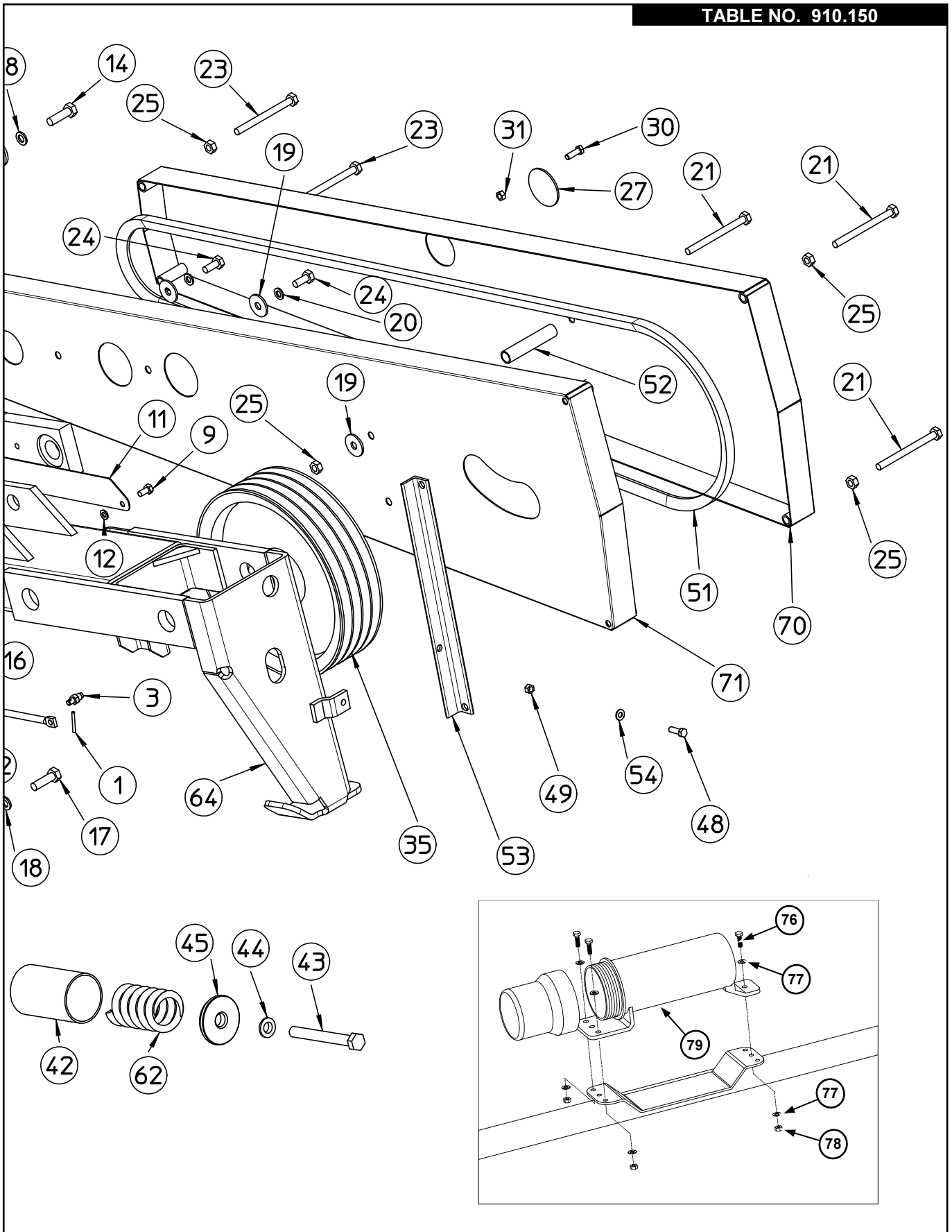


TABLE NO. 910.150			
Item Pos.	Part No. Code	DESCRIPTION	NOTE
1	600.306	PLUG	
2	110.429	LEVER	
3	110.486	PIN	
4	600.551	SCREW	
5	110.493	WASHER	
6	110.482	SPACER	
7	620.480	SNAP RING	
8	630.931	BALL JOINT M8	
9	600.061	SCREW	
10	110.487	WASHER	
11	110.476	PROTECTION	
12	600.229	WASHER	
13	600.037	NUT	
14	620.475	SCREW	
15	100.352	SHIM	
16	110.477	TIE ROD	
17	630.967	SCREW	
18	600.018	SPRING WASHER	
19	620.250	WASHER D.11	
20	600.024	WASHER	
21	600.206	SCREW M10x120	
22	610.160	ROPE	
23	110.021	SCREW	
24	600.006	SCREW	
25	600.029	NUT	
26	110.423	WASHER	
27	100.313	PLUG	
28	110.487	WASHER	
29	110.424	HOOK	
30	630.100	SCREW	
31	610.718	NUT	
32	630.969	TAB	
33	610.505	TAB	
34	620.442	PDF CAP	
35	100.224	PULLEY	
36	600.540	SPRING PIN	
37	110.478	INPUT SHAFT	
38	100.958	PIN	
39	600.135	WASHER	
40	600.333	SNAP RING	

TABLE NO. 910.150			
Item Pos.	Part No. Code	DESCRIPTION	NOTE
41	620.248	BEARING	
42	100.969	SPACER	
43	620.249	BELT TENSION SCREW	
44	100.970	WASHER	
45	100.968	TIGHTENER WASHER	
46	600.533	RETAINING RING	
47	100.758	PIN	
48	600.702	SCREW	
49	600.076	NUT	
50	640.007	SPRING PIN	
51	620.251	BELT	
52	110.022	SPACER	
53	110.016	BELT COVER SUPPORT	
54	610.185	WASHER	
55	620.278	SCREW (M6x16 5739-ZN)	
56	110.426	PIN	
57	220.159	PIN	
58	600.514	FLAT WASHER	
59	630.003	SCREW	
60	610.232	BUSH	
61	100.225	PULLEY	
62	100.967	PTO SPRING	
63	610.510	SCREW	
64	110.420	FRAME	
65	100.965	TIGHTENER ROD	
66	110.425	SPRING	
67	110.421	GEARBOX SUPPORT	
68	110.422	GEARBOX SUPPORT	
69	110.479	PTO SUPPORT	
70	100.964	BELT REAR COVER	
71	110.427	BELT FRONT COVER	
72	110.488	COVER	
73	110.015	SHIM	
74	600.124	GREASE NIPPLE	
75	620.357	HANDLE	
76	630.003	SCREW M6 X 20	
77	600.135	FLAT WASHER ø6,6 X 18	
78	600.472	NUT M6 DIN 980	
79	230.457	CANISTER	

TABLE NO. 910.151

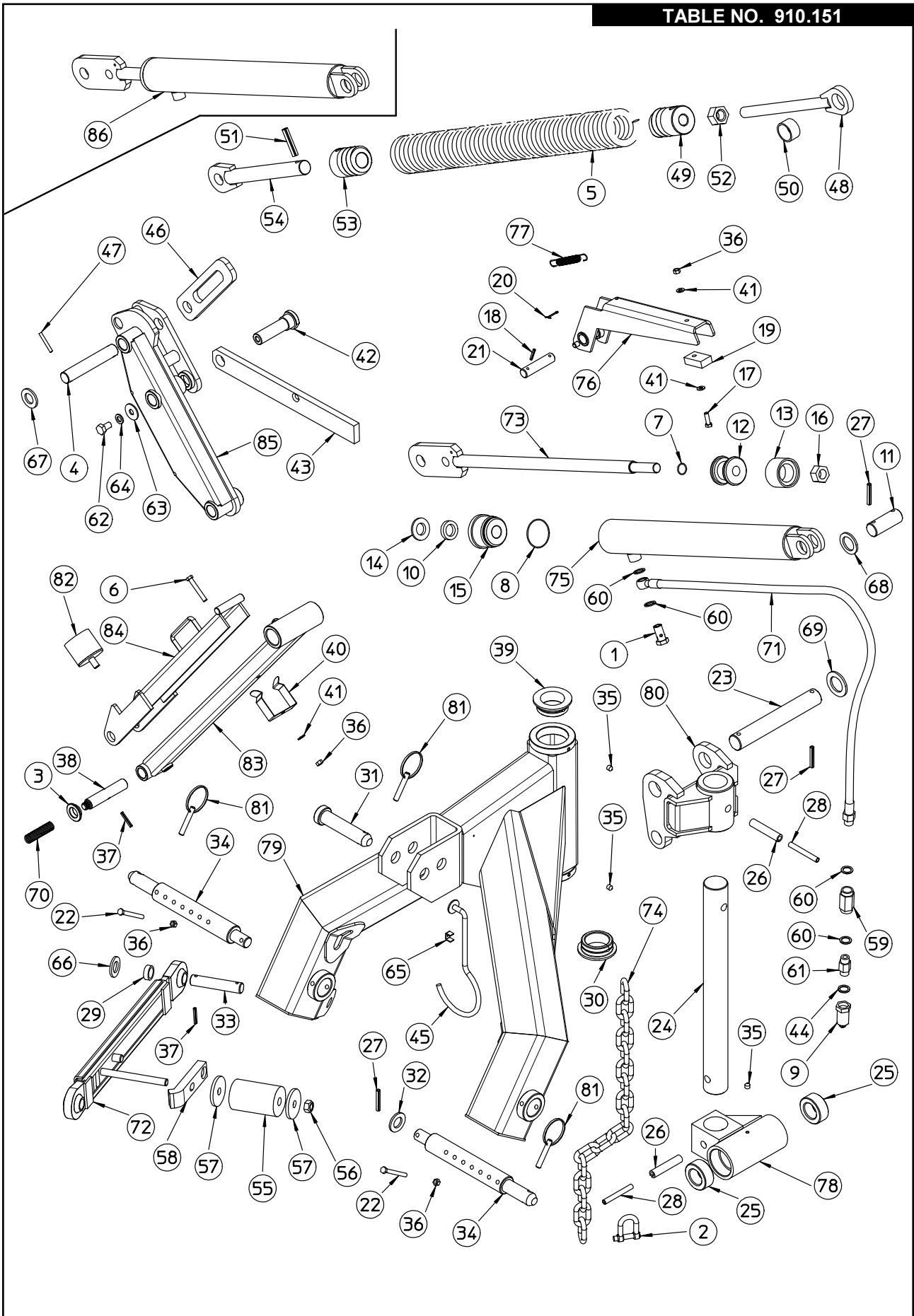


TABLE NO. 910.151			
Item Pos.	Part No. Code	DESCRIPTION	NOTE
1	600.040	FITTING D 3/8	
2	610.118	SHACKLES	
3	110.475	SPACER	
4	110.459	PIN	
5	100.979	SPRING PIN	
6	630.005	SCREW	
7*	--	O RING	
8*	--	O RING	
9	600.273	QUICK COUPLING	
10*	--	GASKET	
11	110.447	PIN	
12	110.495	PISTON	
13*	--	GASKET	
14*	--	GASKET	
15	110.470	CYLINDER HEAD	
16	631.383	NUT	
17	600.702	SCREW	
18	600.182	SPRING PIN	
19	110.450	NYLON PROTECTION	
20	600.112	SPLIT PIN	
21	110.449	PIN	
22	600.400	SCREW	
23	110.445	PIN	
24	100.954	PIN	
25	110.480	BUSHING	
26	620.247	SPRING PIN	
27	600.027	SPRING PIN	
28	600.033	PIN	
29	110.398	BUSHING	
30	110.484	BUSHING	
31	110.011	3 POINT HITCH PIN	
32	600.336	WASHER	
33	110.455	PIN	
34	100.951	PIN	
35	600.124	GREASE NIPPLE	
36	600.076	NUT	
37	600.538	SPRING PIN	
38	110.454	PIN	
39	100.953	BUSHING	
40	110.453	LOCKING SPRING	
41	600.115	WASHER	
42	110.483	PIN	
43	110.458	ROD	
44	630.048	WASHER	
45	100.253	SUPPORT	
*	630.950	CYLINDER GASKET SET	

TABLE NO. 910.151

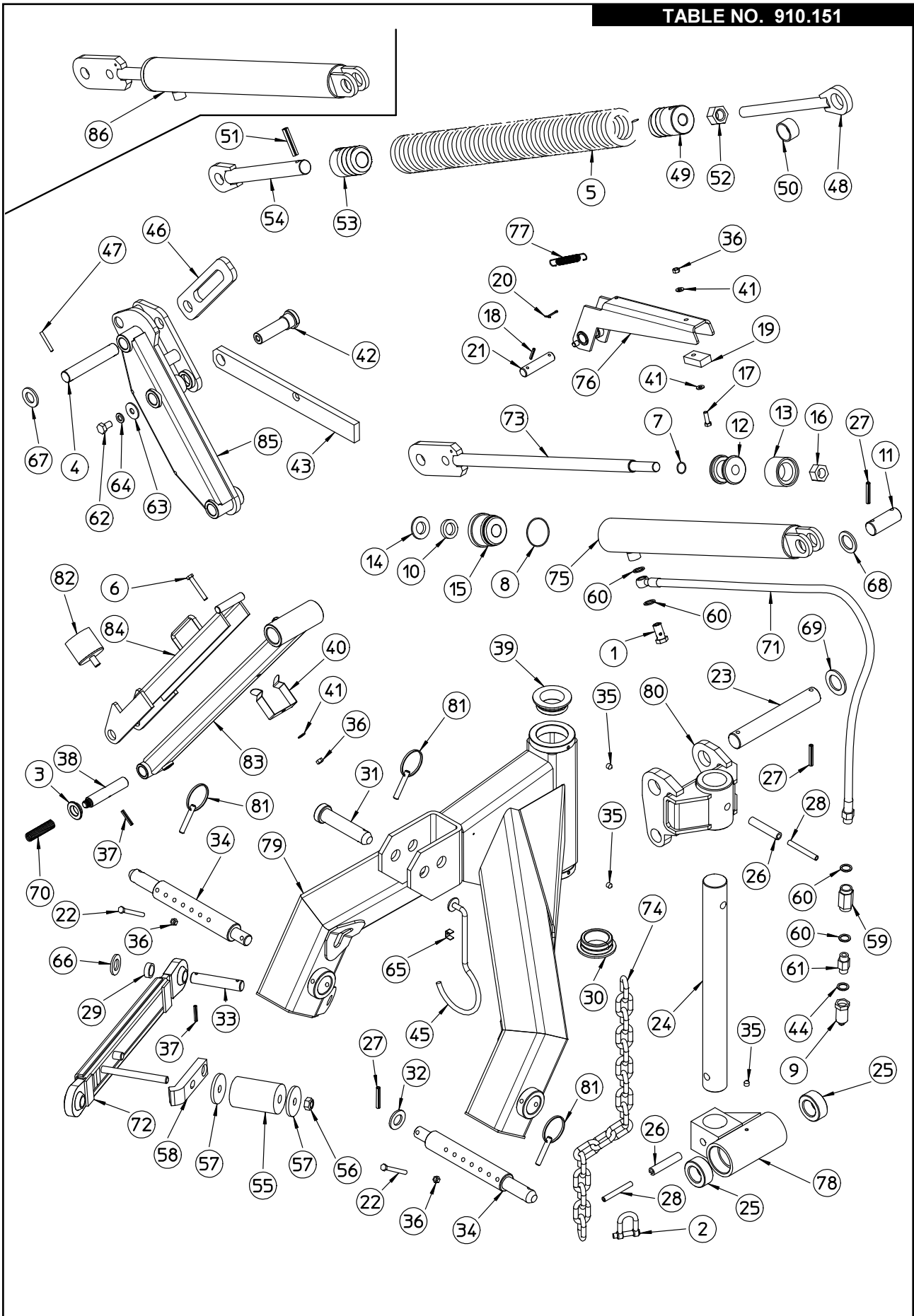




TABLE NO. 910.152

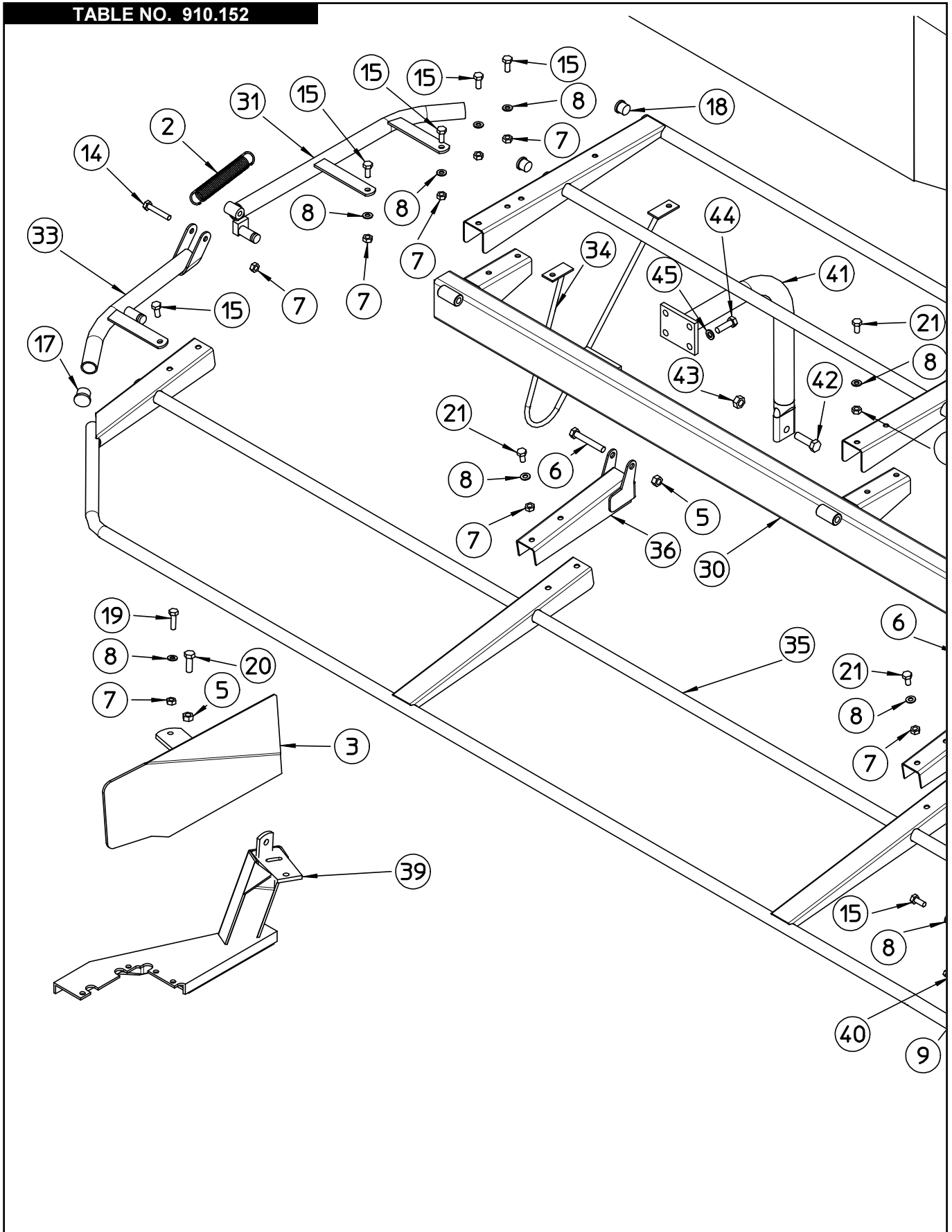




TABLE NO. 910.152

DM7 S ONLY

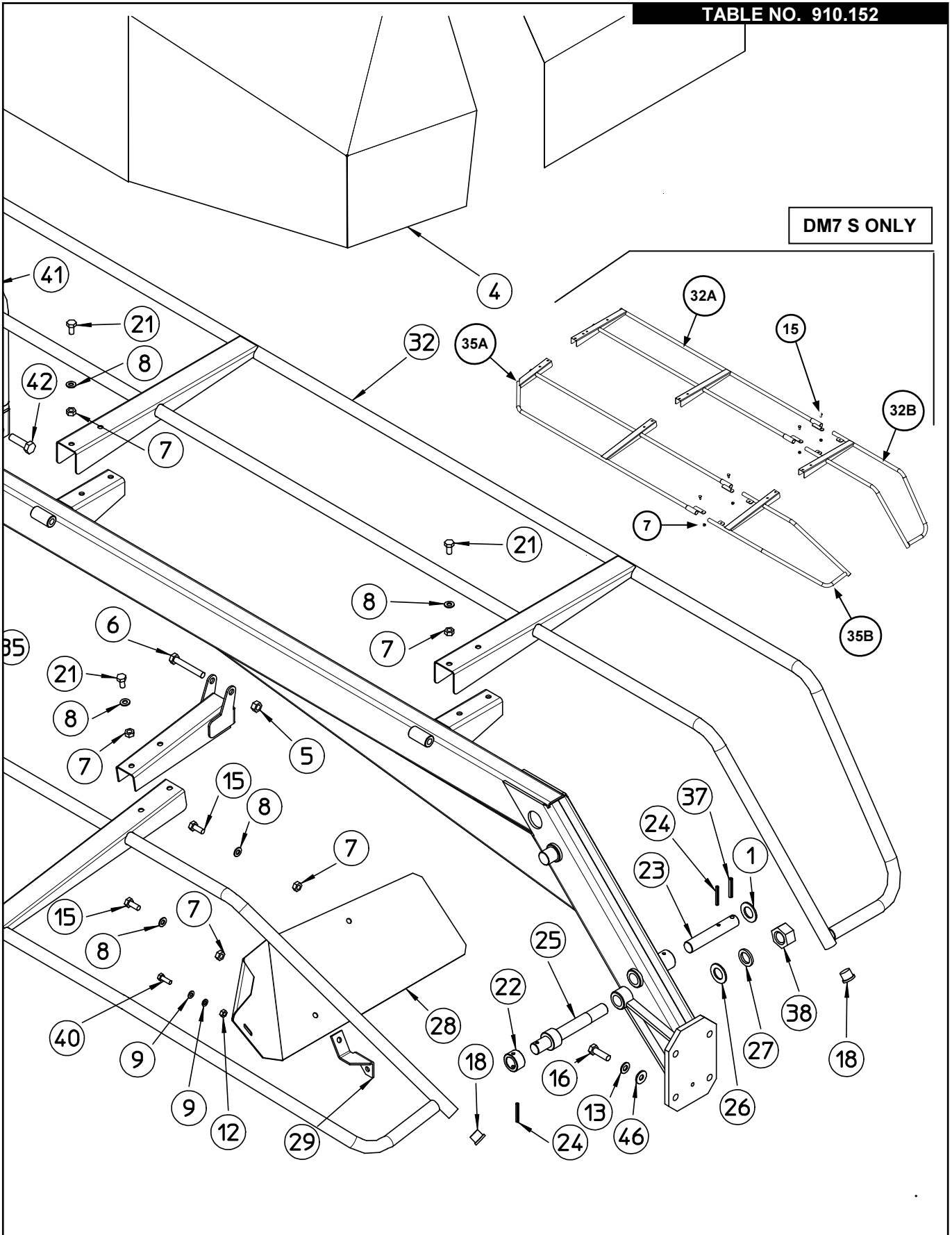
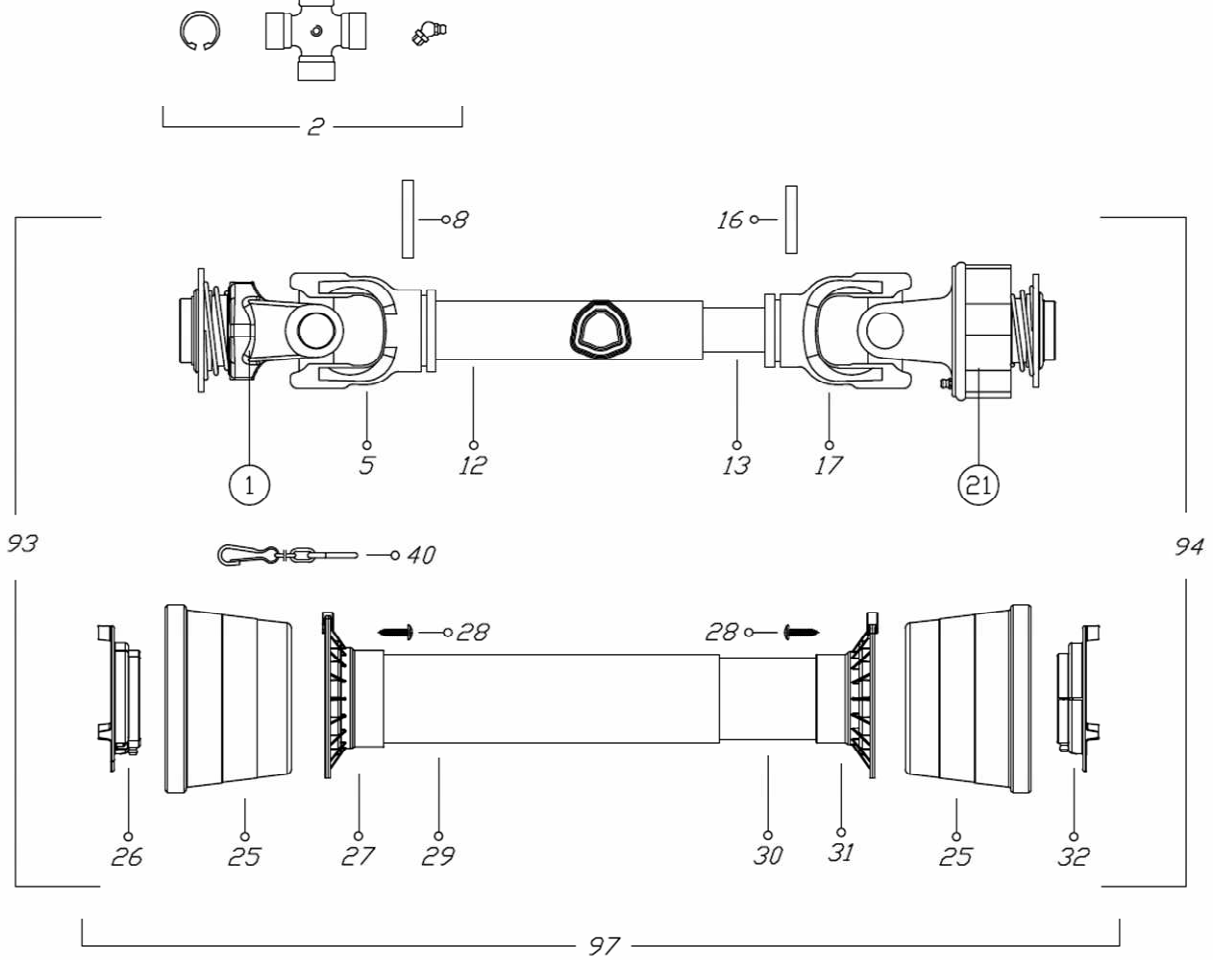


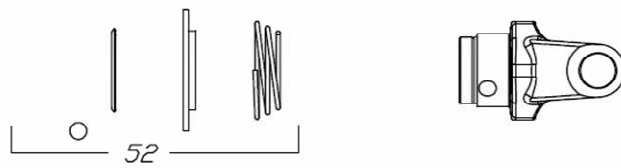
TABLE NO. 910.152			
Item Pos.	Part No. Code	DESCRIPTION	NOTE
1	110.493	WASHER	
2	200.279	SPRING	
3	110.465	HAY DEFLECTOR	
4	110.442	COVER CANVAS	DM6
	110.441	COVER CANVAS	DM7
	110.012	COVER CANVAS	DM8
5	600.077	NUT	
6	600.826	SCREW	
7	600.029	NUT	
8	600.322	WASHER	
9	610.185	WASHER	
12	600.076	NUT	
13	600.018	SPRING WASHER	DM6
	600.086	SPRING WASHER	DM7 - DM8
14	610.500	SCREW	
15	600.006	SCREW	
16	630.839	SCREW	DM6
	620.322	SCREW	DM7 - DM8
17	200.309	PLUG	
18	600.854	PLUG	
19	600.641	SCREW	
20	600.616	SCREW	
21	600.227	GALVANIZED SCREW M10X20	
22	110.432	BUSH	
23	110.433	PIN	
24	600.539	SPRING PIN	
25	110.140	PIN	
26	600.336	WASHER	
27	600.246	WASHER	
28	110.491	HAY DEFLECTOR	
29	110.013	PLATE DEFLECTOR SUPPORT	
30	110.431	FRAME	DM6
	110.430	FRAME	DM7
	110.497	FRAME	DM8
31	100.991	PROTECTION	
32	110.438	PROTECTION	DM6
	100.989	PROTECTION	DM8
32A	120.002	PROTECTION PART RH	DM7
32B	120.004	PROTECTION PART LH	DM7
33	100.990	PROTECTION	
34	110.440	EXTERNAL PROTECTION	
35	110.435	PIVOTING PROTECTION	DM6
	100.988	PIVOTING PROTECTION	DM8
35A	110.997	PIVOTING PROTECTION PART RH	DM7
35B	110.999	PIVOTING PROTECTION PART LH	DM7
36	100.987	PROTECTION PIVOTING	
37	600.027	SPRING PIN	
38	620.319	NUT	
39	110.127	EXTERNAL SUPPORT	
40	600.702	SCREW	
41	100.985	SUPPORT	
42	640.023	SCREW	
43	600.009	NUT	
44	600.441	SCREW	
45	600.018	WASHER	
46	600.089	WASHER	DM6
	600.188	WASHER	DM7 - DM8



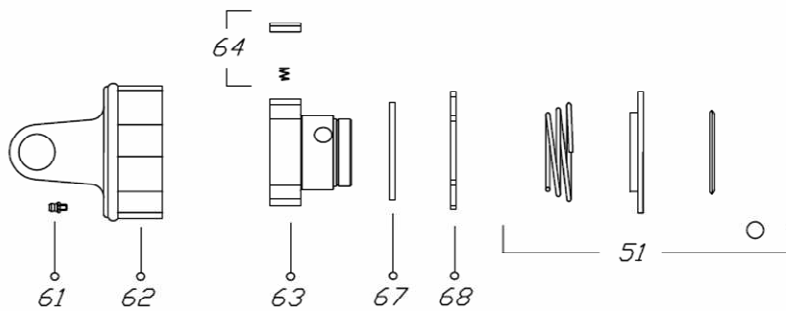
**DM 6-7 S CARDAN SHAFT 630.932 Z6 Tractor takeoff**



①

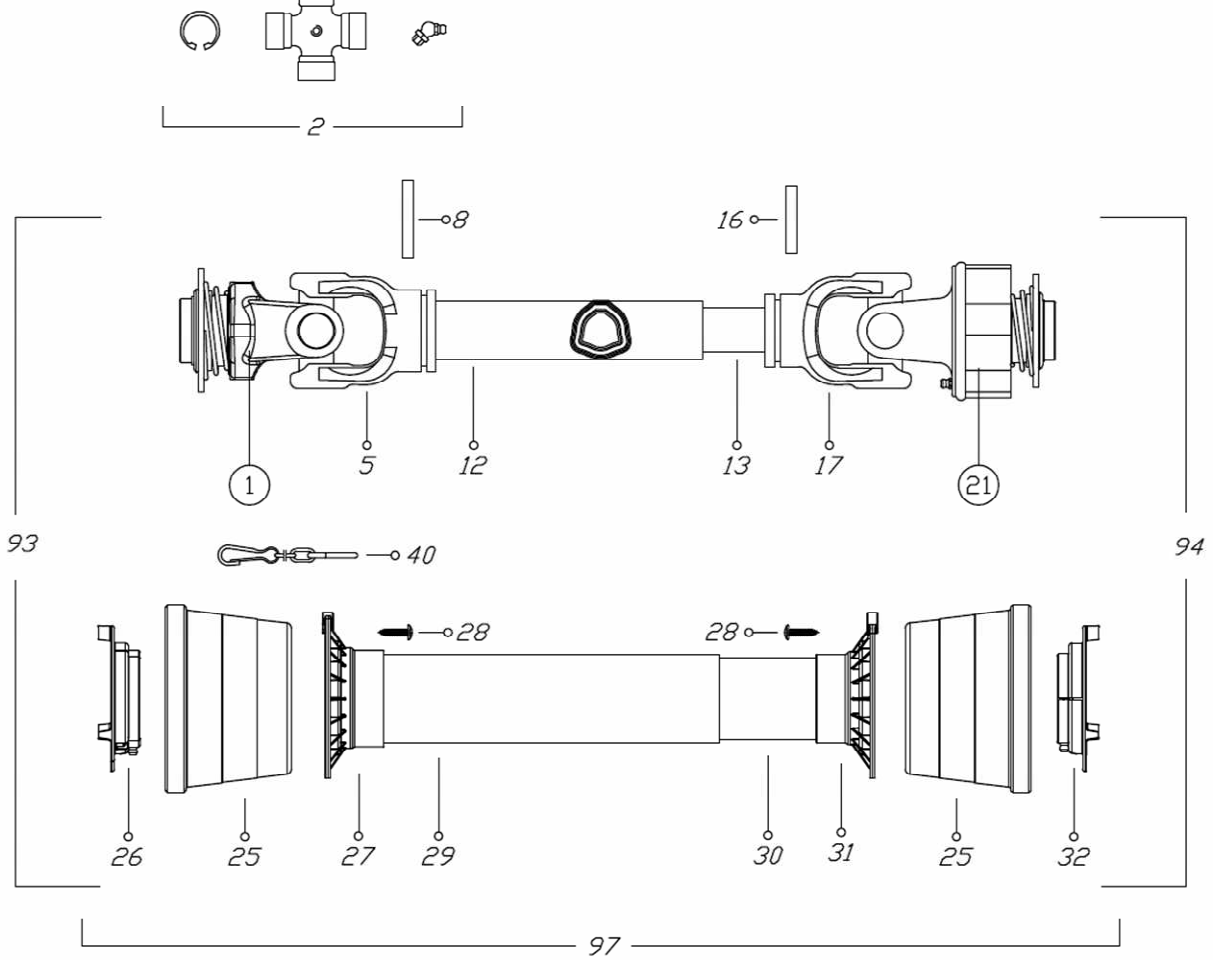


②1

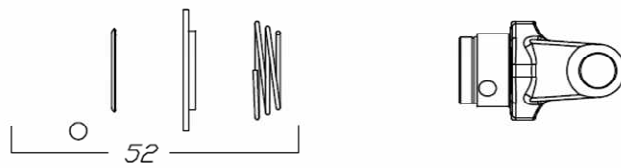


<b>CARDAN SHAFT DM 6-7 S PART NO 630.932 Z6 Tractor takeoff</b>			
<b>Item Pos.</b>	<b>Part No. Code</b>	<b>DESCRIPTION</b>	<b>NOTE</b>
01	630.382	YOKE	Z6 Tractor takeoff
02	610.368	CROSS JOURNAL ASS.	
05	610.370	OUTER TUBE YOKE	
06	001.411	LABEL "DANGER ROTATING ....."	
07	001.316	LABEL "DANGER SHIELD..."	
08	630.383	FLEXIBLE PIN	
12	610.372	CM. 100 CARDAN TUBE(*)	
13	610.373	CM. 100 CARDAN TUBE(*)	
16	630.384	FLEXIBLE PIN	
17	610.375	INNER TUBE YOKE	
21	630.385	FREE WHEEL	
25	630.386	CONE SHIELD BELL 05-06	
26	630.387	OUTER BEARING 05	
27	630.388	OUTER BASE CONE 05-06	
28	630.389	SCREW	
29	630.972	OUTER SAFETY TUBE	
30	630.973	INNER SAFETY TUBE	
31	630.392	INNER BASE CONE 05-06	
32	630.393	INNER BEARING 05	
40	610.068	CHAIN	
51	620.830	BALL COLLAR KITT	
52	630.394	BALL COLLAR KITT	
61	610.206	GRAESE NIPPLE	
62	630.395	OUTER CASING WITH YOKE	
63	630.396	HUIB 1 3/8"z6	
64	620.873	RATCET TOOTH	
67	620.874	RETAINING RING	
68	610.253	CIRCLIP	
93	630.974	OUTER HALF SHAFT	Z6 Tractor takeoff
94	630.975	INNER HALF SHAFT	
97	630.976	SAFETY GUARD	

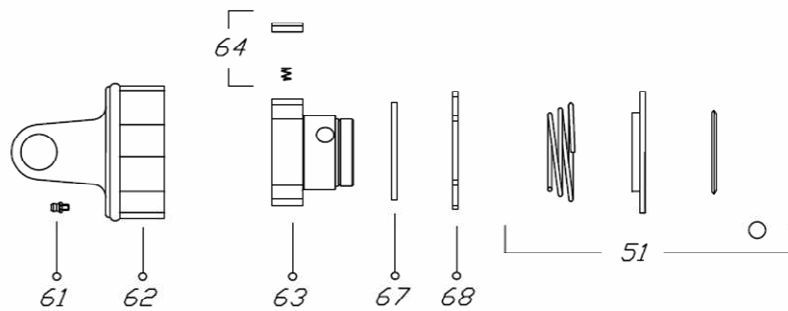
**DM8 S CARDAN SHAFT 620.237 Z6 Tractor takeoff**



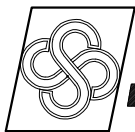
①



②1



CARDAN SHAFT DM 8 S PART NO. 620.237 Z6			
Item Pos.	Part No. Code	DESCRIPTION	NOTE
01	620.079	YOKE	
02	620.080	CROSS JOURNAL ASS.	
05	620.081	OUTER TUBE YOKE	
08	630.383	FLEXIBLE PIN	
12	620.083	CARDAN TUBE	
13	610.373	CARDAN TUBE	
16	630.384	FLEXIBLE PIN	
17	620.085	INNER TUBE YOKE	
21	630.851	FREE WHEEL	
25	630.386	CONE SHIELD BELL 05-06	
26	630.852	OUTER BEARING	
27	630.388	OUTER BASE CONE 05-06	
28	630.389	SCREW	
29	630.878	OUTER SAFETY TUBE	
30	630.879	INNER SAFETY TUBE	
31	630.392	INNER BASE CONE 05-06	
32	630.880	INNER BEARING	
40	610.068	CHAIN	
48	630.719	LABEL DANGER OUTER DRIVE TUBE	
49	630.720	EXTERNAL SHIELD LABEL	
51	610.057	COMPLETE PUSH BUTTTON	
52	630.394	BALL COLLAR KITT	
71	610.216	GRAESE NIPPLE	
72	620.270	OUTER CASING WITH YOKE	
63	630.396	HUIB 1 3/8"z6	
64	620.873	RATCET TOOTH	
67	620.874	RETAINING RING	
68	610.253	CIRCLIP	
93	620.094	OUTER HALF SHAFT	
94	630.882	INNER HALF SHAFT	
97	630.883	SAFETY GUARD	



AGRICULTURAL MACHINERY  
**sitrex**® Spq .

Zona Industriale-Viale Grecia, 8  
06018 TRESTINA-(Perugia)-ITALY  
Tel. +39.075.8540021-Telefax +39.075.8540523  
e-mail: sitrex@sitrex.it www.sitrex.com

